

#### HIGHLIGHTS OF PRESCRIBING INFORMATION

These highlights do not include all the information needed to use INTELENCE® safely and effectively. See full prescribing information for INTELENCE®.

#### INTELENCE® (etravirine) [Tablets]

Initial U.S. Approval – 2008

#### RECENT MAJOR CHANGES

Dosage and Administration (2) 12/2010

#### INDICATIONS AND USAGE

INTELENCE® is a human immunodeficiency virus type 1 (HIV-1) specific, non-nucleoside reverse transcriptase inhibitor (NNRTI) indicated:

- In combination with other antiretroviral agents for the treatment of HIV-1 infection in treatment-experienced adult patients, who have evidence of viral replication and HIV-1 strains resistant to an NNRTI and other antiretroviral agents. (1)

In patients who have experienced virologic failure on an NNRTI-containing regimen, do not use INTELENCE® in combination with only N[*t*]RTIs. (1)

The safety and efficacy of INTELENCE® have not been established in pediatric patients or treatment-naïve adult patients. (1)

#### DOSAGE AND ADMINISTRATION

200 mg (one 200 mg tablet or two 100 mg tablets) taken twice daily following a meal. (2)

#### DOSAGE FORMS AND STRENGTHS

100 mg tablets and 200 mg tablets (3)

#### CONTRAINDICATIONS

None

#### WARNINGS AND PRECAUTIONS

Severe, potentially life threatening and fatal skin reactions have been reported. This includes cases of Stevens-Johnson syndrome, hypersensitivity reaction, toxic epidermal necrolysis and erythema multiforme. Immediately discontinue treatment if severe hypersensitivity, severe rash or rash with systemic symptoms or

liver transaminase elevations develops and monitor clinical status, including liver transaminases closely. (5.1)

#### ADVERSE REACTIONS

The most common adverse drug reactions of moderate to severe intensity ( $\geq 2\%$ ) which occurred at a higher rate than placebo are rash and peripheral neuropathy. (6)

To report SUSPECTED ADVERSE REACTIONS, contact Tibotec Therapeutics at 1-877-REACH-TT or 1-877-732-2488 or FDA at 1-800-FDA-1088 or [www.fda.gov/medwatch](http://www.fda.gov/medwatch).

#### DRUG INTERACTIONS

INTELENCE® should not be co-administered with the following antiretrovirals:

- Tipranavir/ritonavir, fosamprenavir/ritonavir, atazanavir/ritonavir
- Protease inhibitors administered without ritonavir
- NNRTIs

Co-administration of INTELENCE® with drugs that inhibit or induce CYP3A, CYP2C9, and/or CYP2C19 may alter the therapeutic effect or adverse reaction profile of etravirine. (7)

Co-administration of INTELENCE® with drugs that are substrates of CYP3A, CYP2C9, and/or CYP2C19 or are transported by P-glycoprotein may alter the therapeutic effect or adverse reaction profile of the co-administered drug(s). (7)

Refer to the Full Prescribing Information for other drugs that should not be co-administered with INTELENCE® and for other drugs that may require a change in dose or regimen. (7)

#### USE IN SPECIFIC POPULATIONS

- **Pregnancy: Pregnancy Category B**—Use during pregnancy only if the potential benefit justifies the potential risk. Antiviral Pregnancy Registry available. Register patients by calling 1-800-258-4263. (8.1)
- **Nursing Mothers:** Mothers should not breastfeed due to the potential for HIV transmission. (8.3)

See 17 for PATIENT COUNSELING INFORMATION and FDA-approved patient labeling.

Revised: 10/2011

---

**FULL PRESCRIBING INFORMATION: CONTENTS\***

<b>1</b>	<b>INDICATIONS AND USAGE</b>
<b>2</b>	<b>DOSAGE AND ADMINISTRATION</b>
<b>3</b>	<b>DOSAGE FORMS AND STRENGTHS</b>
3.1	INTELENCE® 100 mg Tablets
3.2	INTELENCE® 200 mg Tablets
<b>4</b>	<b>CONTRAINDICATIONS</b>
<b>5</b>	<b>WARNINGS AND PRECAUTIONS</b>
5.1	Severe Skin and Hypersensitivity Reactions
5.2	Fat Redistribution
5.3	Immune Reconstitution Syndrome
<b>6</b>	<b>ADVERSE REACTIONS</b>
6.1	Clinical Trials Experience
6.2	Postmarketing Experience
<b>7</b>	<b>DRUG INTERACTIONS</b>
<b>8</b>	<b>USE IN SPECIFIC POPULATIONS</b>
8.1	Pregnancy
8.3	Nursing Mothers
8.4	Pediatric Use
8.5	Geriatric Use
8.6	Hepatic Impairment
8.7	Renal Impairment
<b>10</b>	<b>OVERDOSAGE</b>
<b>11</b>	<b>DESCRIPTION</b>

<b>12</b>	<b>CLINICAL PHARMACOLOGY</b>
12.1	Mechanism of Action
12.2	Pharmacodynamics
12.3	Pharmacokinetics
12.4	Microbiology
<b>13</b>	<b>NON-CLINICAL TOXICOLOGY</b>
13.1	Carcinogenesis, Mutagenesis, Impairment of Fertility
13.2	Animal Toxicology and/or Pharmacology
<b>14</b>	<b>CLINICAL STUDIES</b>
14.1	Treatment-Experienced Subjects
<b>16</b>	<b>HOW SUPPLIED/STORAGE AND HANDLING</b>
<b>17</b>	<b>PATIENT COUNSELING INFORMATION</b>

[\*Sections or subsections omitted from the full prescribing information are not listed]

## FULL PRESCRIBING INFORMATION

### 1 INDICATIONS AND USAGE

INTELENCE<sup>®\*</sup>, in combination with other antiretroviral agents, is indicated for the treatment of human immunodeficiency virus type 1 (HIV-1) infection in antiretroviral treatment-experienced adult patients, who have evidence of viral replication and HIV-1 strains resistant to a non-nucleoside reverse transcriptase inhibitor (NNRTI) and other antiretroviral agents.

This indication is based on Week 48 analyses from 2 randomized, double-blind, placebo-controlled trials of INTELENCE<sup>®</sup>. Both studies were conducted in clinically advanced, 3-class antiretroviral (NNRTI, N[t]RTI, PI) treatment-experienced adults.

The following points should be considered when initiating therapy with INTELENCE<sup>®</sup>:

- Treatment history and, when available, resistance testing, should guide the use of INTELENCE<sup>®</sup>.
- The use of other active antiretroviral agents with INTELENCE<sup>®</sup> is associated with an increased likelihood of treatment response.
- In patients who have experienced virologic failure on an NNRTI-containing regimen, do not use INTELENCE<sup>®</sup> in combination with only N[t]RTIs [*see Clinical Studies (14)*].
- The risks and benefits of INTELENCE<sup>®</sup> have not been established in pediatric patients or in treatment-naïve adult patients.

### 2 DOSAGE AND ADMINISTRATION

The recommended oral dose of INTELENCE<sup>®</sup> tablets is 200 mg (one 200 mg tablet or two 100 mg tablets) taken twice daily following a meal [*see Clinical Pharmacology (12.3)*]. The type of food does not affect the exposure to etravirine. Patients who are unable to swallow INTELENCE<sup>®</sup> tablet(s) whole may disperse the tablet(s) in a glass of water. Once dispersed, patients should stir the dispersion well and drink it immediately. The glass should be rinsed with water several times and each rinse completely swallowed to ensure the entire dose is consumed.

### 3 DOSAGE FORMS AND STRENGTHS

#### 3.1 INTELENCE<sup>®</sup> 100 mg Tablets

INTELENCE<sup>®</sup> 100 mg tablets are supplied as white to off-white oval tablets debossed with “TMC125” on one side and “100” on the other side.

#### 3.2 INTELENCE<sup>®</sup> 200 mg Tablets

INTELENCE<sup>®</sup> 200 mg tablets are supplied as white to off-white, biconvex, oblong tablets debossed with “T200” on one side.

### 4 CONTRAINDICATIONS

None

### 5 WARNINGS AND PRECAUTIONS

#### 5.1 Severe Skin and Hypersensitivity Reactions

Severe, potentially life-threatening, and fatal skin reactions have been reported. These include cases of Stevens-Johnson syndrome, toxic epidermal necrolysis and erythema multiforme. Hypersensitivity reactions have also been reported and were characterized by rash, constitutional findings, and sometimes organ dysfunction, including hepatic failure. In Phase 3 clinical trials, Grade 3 and 4 rashes were reported in 1.3% of subjects receiving

---

\* Registered trademark of Tibotec Pharmaceuticals

INTELENCE<sup>®</sup> compared to 0.2% of placebo subjects. A total of 2.2% of HIV-1-infected subjects receiving INTELENCE<sup>®</sup> discontinued from Phase 3 trials due to rash [see *Adverse Reactions (6)*]. Rash occurred most commonly during the first 6 weeks of therapy.

Discontinue INTELENCE<sup>®</sup> immediately if signs or symptoms of severe skin reactions or hypersensitivity reactions develop (including, but not limited to, severe rash or rash accompanied by fever, general malaise, fatigue, muscle or joint aches, blisters, oral lesions, conjunctivitis, facial edema, hepatitis, eosinophilia, angioedema). Clinical status including liver transaminases should be monitored and appropriate therapy initiated. Delay in stopping INTELENCE<sup>®</sup> treatment after the onset of severe rash may result in a life-threatening reaction.

## 5.2 Fat Redistribution

Redistribution/accumulation of body fat, including central obesity, dorsocervical fat enlargement (buffalo hump), peripheral wasting, facial wasting, breast enlargement, and “cushingoid appearance” have been observed in patients receiving antiretroviral therapy. The mechanism and long-term consequences of these events are currently unknown. A causal relationship has not been established.

## 5.3 Immune Reconstitution Syndrome

Immune reconstitution syndrome has been reported in patients treated with combination antiretroviral therapy, including INTELENCE<sup>®</sup>. During the initial phase of combination antiretroviral treatment, patients whose immune system responds may develop an inflammatory response to indolent or residual opportunistic infections (such as *Mycobacterium avium* complex, cytomegalovirus, *Pneumocystis jiroveci* pneumonia, and tuberculosis), which may necessitate further evaluation and treatment.

## 6 ADVERSE REACTIONS

The following adverse reactions are described in greater detail in other sections:

- Severe skin and hypersensitivity reactions [see *Warnings and Precautions (5.1)*].

### 6.1 Clinical Trials Experience

Because clinical trials are conducted under widely varying conditions, adverse reaction rates observed in the clinical trials of a drug cannot be directly compared to rates in the clinical trials of another drug and may not reflect the rates observed in practice.

The safety assessment is based on all data from 1203 subjects in the Phase 3 placebo-controlled trials, TMC125-C206 and TMC125-C216, conducted in antiretroviral treatment-experienced HIV-1-infected adult subjects, 599 of whom received INTELENCE<sup>®</sup> (200 mg b.i.d.). In these pooled trials, the median exposure for subjects in the INTELENCE<sup>®</sup> arm and placebo arm was 52.3 and 51.0 weeks, respectively. Discontinuations due to adverse drug reactions (ADRs) were 5.2% in the INTELENCE<sup>®</sup> arm and 2.6% in the placebo arm.

The most frequently reported ADR at least Grade 2 in severity was rash (10.0%). Stevens-Johnson syndrome, drug hypersensitivity reaction and erythema multiforme were reported in <0.1% of subjects during clinical development with INTELENCE<sup>®</sup> [see *Warnings and Precautions (5.1)*]. A total of 2.2% of HIV-1-infected subjects in Phase 3 trials receiving INTELENCE<sup>®</sup> discontinued due to rash. In general, in clinical trials, rash was mild to moderate, occurred primarily in the second week of therapy, and was infrequent after Week 4. Rash generally resolved within 1-2 weeks on continued therapy. The incidence of rash was higher in women compared to men in the INTELENCE<sup>®</sup> arm in the Phase 3 trials. Patients with a history of NNRTI-related rash did not appear to be at increased risk for the development of INTELENCE<sup>®</sup>-related rash compared to patients without a history of NNRTI-related rash.

*Common Adverse Reactions*

Clinical ADRs of moderate intensity or greater ( $\geq$  Grade 2) and reported in  $\geq 2\%$  of subjects treated with INTELENCE<sup>®</sup> and occurring at a higher rate compared to placebo (excess of 1%) are presented in Table 1. Laboratory abnormalities considered ADRs are included in Table 2.

<b>Table 1: Treatment-Emergent Adverse Reactions* of at least Moderate Intensity<sup>†</sup> (Grades 2-4) in <math>\geq 2\%</math> of Adult Subjects in the INTELENCE<sup>®</sup> Treatment Groups and at a higher rate compared to placebo (excess of 1%)</b>		
<b>System Organ Class, Preferred Term, %</b>	<b>Pooled TMC125-C206 and TMC125-C216 Trials</b>	
	<b>INTELENCE<sup>®</sup> + BR N=599</b>	<b>Placebo + BR N=604</b>
<b>Nervous System Disorders</b>		
Peripheral neuropathy	4%	2%
<b>Skin and Subcutaneous Tissue Disorders</b>		
Rash	10%	3%
N=total number of subjects per treatment group, BR=background regimen * Includes adverse reactions at least possibly, probably, or very likely related to the drug. <sup>†</sup> Intensities are defined as follows: Moderate (discomfort enough to cause interference with usual activity); Severe (incapacitating with inability to work or do usual activity).		

*Less Common Adverse Reactions*

Treatment-emergent ADRs occurring in less than 2% of subjects (n=599) receiving INTELENCE<sup>®</sup> and of at least moderate intensity ( $\geq$  Grade 2) are listed below by body system:

*Cardiac Disorders:* myocardial infarction, angina pectoris, atrial fibrillation

*Ear and Labyrinth Disorders:* vertigo

*Eye Disorders:* blurred vision

*Gastrointestinal Disorders:* gastroesophageal reflux disease, flatulence, gastritis, abdominal distension, pancreatitis, constipation, dry mouth, hematemesis, retching, stomatitis

*General Disorders and Administration Site Conditions:* sluggishness

*Hematologic Disorders:* hemolytic anemia

*Hepatobiliary Disorders:* hepatic failure, hepatomegaly, cytolytic hepatitis, hepatic steatosis, hepatitis

*Immune System Disorders:* drug hypersensitivity, immune reconstitution syndrome

*Metabolism and Nutrition Disorders:* diabetes mellitus, anorexia, dyslipidemia

*Nervous System Disorders:* paraesthesia, somnolence, convulsion, hypoesthesia, amnesia, syncope, disturbance in attention, hypersomnia, tremor

*Psychiatric Disorders:* anxiety, sleep disorders, abnormal dreams, confusional state, disorientation, nervousness, nightmares

*Renal and Urinary Disorders:* acute renal failure

*Reproductive System and Breast Disorders:* gynecomastia

*Respiratory, Thoracic and Mediastinal Disorders:* exertional dyspnea, bronchospasm

*Skin and Subcutaneous Tissue Disorders:* night sweats, lipohypertrophy, prurigo, hyperhidrosis, dry skin, swelling face

Additional ADRs of at least moderate intensity observed in other trials were acquired lipodystrophy, angioneurotic edema, erythema multiforme and haemorrhagic stroke, each reported in no more than 0.5% of subjects.

*Laboratory Abnormalities in Treatment-Experienced Patients*

Selected Grade 2 to Grade 4 laboratory abnormalities that represent a worsening from baseline observed in adult subjects treated with INTELENCE® are presented in Table 2.

<b>Table 2: Selected Grade 2 to 4 Laboratory Abnormalities Observed in Treatment-Experienced Subjects</b>		<b>Pooled TMC125-C206 and TMC125-C216 Trials</b>	
<b>Laboratory Parameter Preferred Term, %</b>	<b>DAIDS Toxicity Range</b>	<b>INTELENCE® + BR N=599</b>	<b>Placebo + BR N=604</b>
<b>GENERAL BIOCHEMISTRY</b>			
<b>Pancreatic amylase</b>			
Grade 2	> 1.5-2 x ULN	7%	8%
Grade 3	> 2-5 x ULN	7%	8%
Grade 4	> 5 x ULN	2%	1%
<b>Lipase</b>			
Grade 2	> 1.5-3 x ULN	4%	6%
Grade 3	> 3-5 x ULN	2%	2%
Grade 4	> 5xULN	1%	< 1%
<b>Creatinine</b>			
Grade 2	> 1.4-1.8 x ULN	6%	5%
Grade 3	> 1.9-3.4 x ULN	2%	1%
Grade 4	> 3.4 x ULN	0%	< 1%
<b>HEMATOLOGY</b>			
<b>Decreased hemoglobin</b>			
Grade 2	90-99 g/L	2%	4%
Grade 3	70-89 g/L	< 1%	< 1%
Grade 4	< 70 g/L	< 1%	< 1%
<b>White blood cell count</b>			
Grade 2	1,500-1,999/mm <sup>3</sup>	2%	3%
Grade 3	1,000-1,499/mm <sup>3</sup>	1%	4%
Grade 4	< 1,000/mm <sup>3</sup>	1%	< 1%
<b>Neutrophils</b>			
Grade 2	750-999/mm <sup>3</sup>	5%	6%
Grade 3	500-749/mm <sup>3</sup>	4%	4%
Grade 4	< 500/mm <sup>3</sup>	2%	3%
<b>Platelet count</b>			
Grade 2	50,000-99,999/mm <sup>3</sup>	3%	5%
Grade 3	25,000-49,999/mm <sup>3</sup>	1%	1%
Grade 4	< 25,000/mm <sup>3</sup>	< 1%	< 1%
<b>LIPIDS AND GLUCOSE</b>			
<b>Total cholesterol</b>			
Grade 2	> 6.20-7.77 mmol/L 240-300 mg/dL	20%	17%
Grade 3	> 7.77 mmol/L > 300 mg/dL	8%	5%
<b>Low density lipoprotein</b>			
Grade 2	4.13-4.9 mmol/L 160-190 mg/dL	13%	12%
Grade 3	> 4.9 mmol/L > 190 mg/dL	7%	7%
<b>Triglycerides</b>			

Grade 2	5.65-8.48 mmol/L 500 –750 mg/dL	9%	7%
Grade 3	8.49-13.56 mmol/L 751 - 1200 mg/dL	6%	4%
Grade 4	> 13.56 mmol/L > 1200 mg/dL	4%	2%
<b>Elevated glucose levels</b>			
Grade 2	6.95-13.88 mmol/L 161-250 mg/dL	15%	13%
Grade 3	13.89-27.75 mmol/L 251 – 500 mg/dL	4%	2%
Grade 4	> 27.75 mmol/L > 500 mg/dL	0%	< 1%
<b>HEPATIC PARAMETERS</b>			
<b>Alanine amino transferase</b>			
Grade 2	2.6-5 x ULN	6%	5%
Grade 3	5.1-10 x ULN	3%	2%
Grade 4	> 10 x ULN	1%	< 1%
<b>Aspartate amino transferase</b>			
Grade 2	2.6-5 x ULN	6%	8%
Grade 3	5.1-10 x ULN	3%	2%
Grade 4	> 10 x ULN	< 1%	< 1%
ULN=Upper Limit of Normal, BR=background regimen			

*Patients co-infected with hepatitis B and/or hepatitis C virus*

In Phase 3 trials TMC125-C206 and TMC125-C216, 139 subjects (12.3%) with chronic hepatitis B and/or hepatitis C virus co-infection out of 1129 subjects were permitted to enroll. AST and ALT abnormalities occurred more frequently in hepatitis B and/or hepatitis C virus co-infected subjects for both treatment groups. Grade 2 or higher laboratory abnormalities that represent a worsening from baseline of AST, ALT or total bilirubin occurred in 27.8%, 25.0% and 7.1% respectively, of INTELENCE<sup>®</sup>-treated co-infected subjects as compared to 6.7%, 7.5% and 1.8% of non-co-infected INTELENCE<sup>®</sup>-treated subjects. In general, adverse events reported by INTELENCE<sup>®</sup>-treated subjects with hepatitis B and/or hepatitis C virus co-infection were similar to INTELENCE<sup>®</sup>-treated subjects without hepatitis B and/or hepatitis C virus co-infection.

## 6.2 Postmarketing Experience

The following events have been identified during postmarketing use of INTELENCE<sup>®</sup>. Because these events are reported voluntarily from a population of unknown size, it is not always possible to reliably estimate their frequency or establish a causal relationship to drug exposure.

*Immune System Disorders:* Severe hypersensitivity reactions including cases of hepatic failure have been reported [see *Warnings and Precautions* (5.1)].

*Musculoskeletal and Connective Tissue Disorders:* rhabdomyolysis

*Skin and Subcutaneous Tissue Disorders:* Fatal cases of toxic epidermal necrolysis have been reported [see *Warnings and Precautions* (5.1)].

## 7 DRUG INTERACTIONS

Etravirine is a substrate of CYP3A, CYP2C9, and CYP2C19. Therefore, co-administration of INTELENCE<sup>®</sup> with drugs that induce or inhibit CYP3A, CYP2C9, and CYP2C19 may alter the therapeutic effect or adverse reaction profile of INTELENCE<sup>®</sup> (see Table 3). [See also *Clinical Pharmacology* (12.3).]

Etravirine is an inducer of CYP3A and inhibitor of CYP2C9, CYP2C19 and P-glycoprotein. Therefore, co-administration of drugs that are substrates of CYP3A, CYP2C9 and CYP2C19 or are transported by P-glycoprotein with INTELENCE<sup>®</sup> may alter the therapeutic effect or adverse reaction profile of the co-administered drug(s) (see Table 3). [See also *Clinical Pharmacology* (12.3).]

Table 3 shows the established and other potentially significant drug interactions based on which, alterations in dose or regimen of INTELENCE<sup>®</sup> and/or co-administered drug may be recommended. Drugs that are not recommended for co-administration with INTELENCE<sup>®</sup> are also included in Table 3.

<b>Table 3: Established and Other Potentially Significant Drug Interactions: Alterations in Dose or Regimen May Be Recommended Based on Drug Interaction Studies or Predicted Interaction</b> [See <i>Clinical Pharmacology</i> (12.3)]		
Concomitant Drug Class: Drug Name	Effect on Concentration of Etravirine or Concomitant Drug	Clinical Comment
<b>HIV-Antiviral Agents: Non-Nucleoside Reverse Transcriptase Inhibitors (NNRTIs)</b>		
efavirenz* nevirapine*	↓ etravirine	Combining two NNRTIs has not been shown to be beneficial. Concomitant use of INTELENCE <sup>®</sup> with efavirenz or nevirapine may cause a significant decrease in the plasma concentrations of etravirine and loss of therapeutic effect of INTELENCE <sup>®</sup> . INTELENCE <sup>®</sup> and other NNRTIs should not be co-administered.
delavirdine	↑ etravirine	Combining two NNRTIs has not been shown to be beneficial. INTELENCE <sup>®</sup> and delavirdine should not be co-administered.
<b>HIV-Antiviral Agents: Protease Inhibitors (PIs)</b>		
atazanavir* (without ritonavir)	↓ atazanavir	Concomitant use of INTELENCE <sup>®</sup> with atazanavir without low-dose ritonavir may cause a significant alteration in the plasma concentration of atazanavir. INTELENCE <sup>®</sup> should not be co-administered with atazanavir without low-dose ritonavir.
atazanavir/ritonavir*	↓ atazanavir ↑ etravirine	Concomitant use of INTELENCE <sup>®</sup> with atazanavir/ritonavir may cause a significant decrease in atazanavir C <sub>min</sub> and loss of therapeutic effect of atazanavir. In addition, the mean systemic exposure (AUC) of etravirine after co-administration of INTELENCE <sup>®</sup> with atazanavir/ritonavir is anticipated to be higher than the mean systemic exposure of etravirine observed in the Phase 3 trials after co-administration of INTELENCE <sup>®</sup> and darunavir/ritonavir (as part of the background regimen). INTELENCE <sup>®</sup> and atazanavir/ritonavir should not be co-administered.
darunavir/ritonavir*	↓ etravirine	The mean systemic exposure (AUC) of etravirine was reduced when INTELENCE <sup>®</sup> was co-administered with darunavir/ritonavir. Because all subjects in the Phase 3 trials received darunavir/ritonavir as part of the background regimen and etravirine exposures from these trials were determined to be safe and effective, INTELENCE <sup>®</sup> and darunavir/ritonavir can be co-administered without dose adjustments.
fosamprenavir (without ritonavir)	↑ amprenavir	Concomitant use of INTELENCE <sup>®</sup> with fosamprenavir without low-dose ritonavir may cause a significant alteration in the plasma concentration of amprenavir. INTELENCE <sup>®</sup> should not be co-administered with fosamprenavir without low-dose ritonavir.
fosamprenavir/ritonavir*	↑ amprenavir	Due to a significant increase in the systemic exposure of amprenavir, the appropriate doses of the combination of

		INTELENCE <sup>®</sup> and fosamprenavir/ritonavir have not been established. INTELENCE <sup>®</sup> and fosamprenavir/ritonavir should not be co-administered.
indinavir* (without ritonavir)	↓ indinavir	Concomitant use of INTELENCE <sup>®</sup> with indinavir without low-dose ritonavir may cause a significant alteration in the plasma concentration of indinavir. INTELENCE <sup>®</sup> should not be co-administered with indinavir without low-dose ritonavir.
lopinavir/ritonavir*	↓ etravirine	The mean systemic exposure (AUC) of etravirine was reduced after co-administration of INTELENCE <sup>®</sup> with lopinavir/ritonavir (tablet). Because the reduction in the mean systemic exposures of etravirine in the presence of lopinavir/ritonavir is similar to the reduction in mean systemic exposures of etravirine in the presence of darunavir/ritonavir, INTELENCE <sup>®</sup> and lopinavir/ritonavir can be co-administered without dose adjustments.
nelfinavir (without ritonavir)	↑ nelfinavir	Concomitant use of INTELENCE <sup>®</sup> with nelfinavir without low-dose ritonavir may cause a significant alteration in the plasma concentration of nelfinavir. INTELENCE <sup>®</sup> should not be co-administered with nelfinavir without low-dose ritonavir.
ritonavir*	↓ etravirine	Concomitant use of INTELENCE <sup>®</sup> with ritonavir 600 mg b.i.d. may cause a significant decrease in the plasma concentration of etravirine and loss of therapeutic effect of INTELENCE <sup>®</sup> . INTELENCE <sup>®</sup> and ritonavir 600 mg b.i.d. should not be co-administered.
saquinavir/ritonavir*	↓ etravirine	The mean systemic exposure (AUC) of etravirine was reduced when INTELENCE <sup>®</sup> was co-administered with saquinavir/ritonavir. Because the reduction in the mean systemic exposures of etravirine in the presence of saquinavir/ritonavir is similar to the reduction in mean systemic exposures of etravirine in the presence of darunavir/ritonavir, INTELENCE <sup>®</sup> and saquinavir/ritonavir can be co-administered without dose adjustments.
tipranavir/ritonavir*	↓ etravirine	Concomitant use of INTELENCE <sup>®</sup> with tipranavir/ritonavir may cause a significant decrease in the plasma concentrations of etravirine and loss of therapeutic effect of INTELENCE <sup>®</sup> . INTELENCE <sup>®</sup> and tipranavir/ritonavir should not be co-administered.
<b>CCR5 Antagonists</b>		
maraviroc*	↔ etravirine ↓ maraviroc	When INTELENCE <sup>®</sup> is co-administered with maraviroc in the absence of a potent CYP3A inhibitor (e.g., ritonavir boosted protease inhibitor), the recommended dose of maraviroc is 600 mg b.i.d. No dose adjustment of INTELENCE <sup>®</sup> is needed.
maraviroc/darunavir/ ritonavir* <sup>†</sup>	↔ etravirine ↑ maraviroc	When INTELENCE <sup>®</sup> is co-administered with maraviroc in the presence of a potent CYP3A inhibitor (e.g., ritonavir boosted protease inhibitor), the recommended dose of maraviroc is 150 mg b.i.d. No dose adjustment of INTELENCE <sup>®</sup> is needed.
<b>Other Agents</b>		
<b>Antiarrhythmics:</b> digoxin*	↔ etravirine ↑ digoxin	For patients who are initiating a combination of INTELENCE <sup>®</sup> and digoxin, the lowest dose of digoxin should initially be prescribed. For patients on a stable digoxin regimen and initiating INTELENCE <sup>®</sup> , no dose adjustment of either INTELENCE <sup>®</sup> or digoxin is needed. The serum digoxin concentrations should be monitored and used for titration of the digoxin dose to obtain the

amiodarone, bepidil, disopyramide, flecainide, lidocaine (systemic), mexiletine, propafenone, quinidine	↓ antiarrhythmics	desired clinical effect.  Concentrations of these antiarrhythmics may be decreased when co-administered with INTELENCE®. INTELENCE® and antiarrhythmics should be co-administered with caution. Drug concentration monitoring is recommended, if available.
<b>Anticoagulants:</b> warfarin	↑ anticoagulants	Warfarin concentrations may be increased when co-administered with INTELENCE®. The international normalized ratio (INR) should be monitored when warfarin is combined with INTELENCE®.
<b>Anticonvulsants:</b> carbamazepine, phenobarbital, phenytoin	↓ etravirine	Carbamazepine, phenobarbital and phenytoin are inducers of CYP450 enzymes. INTELENCE® should not be used in combination with carbamazepine, phenobarbital, or phenytoin as co-administration may cause significant decreases in etravirine plasma concentrations and loss of therapeutic effect of INTELENCE®.
<b>Antifungals:</b> fluconazole*, voriconazole*	↑ etravirine ↔ fluconazole ↑ voriconazole	Co-administration of etravirine and fluconazole significantly increased etravirine exposures. The amount of safety data at these increased etravirine exposures is limited, therefore, etravirine and fluconazole should be co-administered with caution. No dose adjustment of INTELENCE® or fluconazole is needed.  Co-administration of etravirine and voriconazole significantly increased etravirine exposures. The amount of safety data at these increased etravirine exposures is limited, therefore, etravirine and voriconazole should be co-administered with caution. No dose adjustment of INTELENCE® or voriconazole is needed.
<b>Antifungals:</b> itraconazole, ketoconazole, posaconazole	↑ etravirine ↓ itraconazole ↓ ketoconazole ↔ posaconazole	Posaconazole, a potent inhibitor of CYP3A4, may increase plasma concentrations of etravirine. Itraconazole and ketoconazole are potent inhibitors as well as substrates of CYP3A4. Concomitant systemic use of itraconazole or ketoconazole and INTELENCE® may increase plasma concentrations of etravirine. Simultaneously, plasma concentrations of itraconazole or ketoconazole may be decreased by INTELENCE®. Dose adjustments for itraconazole, ketoconazole or posaconazole may be necessary depending on the other co-administered drugs.
<b>Antiinfectives:</b> clarithromycin*	↑ etravirine ↓ clarithromycin ↑ 14-OH-clarithromycin	Clarithromycin exposure was decreased by INTELENCE®; however, concentrations of the active metabolite, 14-hydroxy-clarithromycin, were increased. Because 14-hydroxy-clarithromycin has reduced activity against <i>Mycobacterium avium</i> complex (MAC), overall activity against this pathogen may be altered. Alternatives to clarithromycin, such as azithromycin, should be considered for the treatment of MAC.
<b>Antimycobacterials:</b> rifampin, rifapentine	↓ etravirine	Rifampin and rifapentine are potent inducers of CYP450 enzymes. INTELENCE® should not be used with rifampin or rifapentine as co-administration may cause significant decreases in etravirine plasma concentrations and loss of therapeutic effect of INTELENCE®.
<b>Antimycobacterials:</b>	↓ etravirine	If INTELENCE® is NOT co-administered with a protease

rifabutin*	↓ rifabutin ↓ 25- <i>O</i> -desacetyl rifabutin	inhibitor/ritonavir, then rifabutin at a dose of 300 mg q.d. is recommended.  If INTELENCE® is co-administered with darunavir/ritonavir, lopinavir/ritonavir or saquinavir/ritonavir, then rifabutin should not be co-administered due to the potential for significant reductions in etravirine exposure.
<b>Benzodiazepines:</b> diazepam	↑ diazepam	Concomitant use of INTELENCE® with diazepam may increase plasma concentrations of diazepam. A decrease in diazepam dose may be needed.
<b>Corticosteroids:</b> dexamethasone (systemic)	↓ etravirine	Systemic dexamethasone induces CYP3A and can decrease etravirine plasma concentrations. This may result in loss of therapeutic effect of INTELENCE®. Systemic dexamethasone should be used with caution or alternatives should be considered, particularly for long-term use.
<b>Herbal Products:</b> St. John's wort ( <i>Hypericum perforatum</i> )	↓ etravirine	Concomitant use of INTELENCE® with products containing St. John's wort may cause significant decreases in etravirine plasma concentrations and loss of therapeutic effect of INTELENCE®. INTELENCE® and products containing St. John's wort should not be co-administered.
<b>HMG-CoA Reductase Inhibitors:</b> atorvastatin*  fluvastatin, lovastatin, pravastatin, rosuvastatin, simvastatin	↔ etravirine ↓ atorvastatin ↑ 2-OH-atorvastatin  ↔ etravirine ↑ fluvastatin, ↓ lovastatin, ↔ pravastatin, ↔ rosuvastatin, ↓ simvastatin	The combination of INTELENCE® and atorvastatin can be given without dose adjustments, however, the dose of atorvastatin may need to be altered based on clinical response.  No interaction between pravastatin, rosuvastatin and INTELENCE® is expected.  Lovastatin and simvastatin are CYP3A substrates and co-administration with INTELENCE® may result in lower plasma concentrations of the HMG-CoA reductase inhibitor. Fluvastatin is metabolized by CYP2C9 and co-administration with INTELENCE® may result in higher plasma concentrations of the HMG-CoA reductase inhibitor. Dose adjustments for these HMG-CoA reductase inhibitors may be necessary.
<b>Immunosuppressants:</b> cyclosporine, sirolimus, tacrolimus	↓ immunosuppressant	INTELENCE® and systemic immunosuppressants should be co-administered with caution because plasma concentrations of cyclosporine, sirolimus, or tacrolimus may be affected.
<b>Narcotic Analgesics/Treatment of Opioid Dependence:</b> buprenorphine, buprenorphine/naloxone*, methadone*	↔ etravirine ↓ buprenorphine ↔ norbuprenorphine ↔ methadone	INTELENCE® and buprenorphine (or buprenorphine/naloxone) can be co-administered without dose adjustments, however, clinical monitoring for withdrawal symptoms is recommended as buprenorphine (or buprenorphine/naloxone) maintenance therapy may need to be adjusted in some patients.  INTELENCE® and methadone can be co-administered without dose adjustments, however, clinical monitoring for withdrawal symptoms is recommended as methadone maintenance therapy may need to be adjusted in some patients.
<b>Phosphodiesterase Type 5 (PDE-5) Inhibitors:</b> sildenafil*, tadalafil,	↓ sildenafil ↓ N-desmethyl-sildenafil	INTELENCE® and sildenafil can be co-administered without dose adjustments, however, the dose of sildenafil may need to be altered based on clinical effect.

ildenafil		
<b>Platelet Aggregation Inhibitors:</b> clopidogrel	↓ clopidogrel (active) metabolite	Activation of clopidogrel to its active metabolite may be decreased when clopidogrel is co-administered with INTELENCE®. Alternatives to clopidogrel should be considered.
† = increase, ‡ = decrease, ↔ = no change * The interaction between INTELENCE® and the drug was evaluated in a clinical study. All other drug interactions shown are predicted. † The reference for etravirine exposure is the pharmacokinetic parameters of etravirine in the presence of darunavir/ritonavir		

In addition to the drugs included in Table 3, the interaction between INTELENCE® and the following drugs were evaluated in clinical studies and no dose adjustment is needed for either drug [see *Clinical Pharmacology (12.3)*]: didanosine, enfuvirtide (ENF), ethinylestradiol/norethindrone, omeprazole, paroxetine, raltegravir, ranitidine, and tenofovir disoproxil fumarate.

## 8 USE IN SPECIFIC POPULATIONS

### 8.1 Pregnancy

#### *Pregnancy Category B*

No adequate and well-controlled studies of INTELENCE® use in pregnant women have been conducted. In addition, no pharmacokinetic studies have been conducted in pregnant patients. Animal reproduction studies in rats and rabbits at systemic exposures equivalent to those at the recommended human dose of 400 mg/day revealed no evidence of fetal harm. INTELENCE® should be used during pregnancy only if the potential benefit justifies the potential risk to the fetus.

#### *Antiretroviral Pregnancy Registry*

To monitor maternal-fetal outcomes of pregnant women exposed to INTELENCE®, an Antiretroviral Pregnancy Registry has been established. Physicians are encouraged to register patients by calling 1-800-258-4263.

### 8.3 Nursing mothers

**The Centers for Disease Control and Prevention recommend that HIV-infected mothers not breastfeed their infants to avoid risking postnatal transmission of HIV.** It is not known whether etravirine is secreted in human milk. Because of both the potential for HIV transmission and the potential for adverse reactions in nursing infants, **mothers should be instructed not to breastfeed if they are receiving INTELENCE®.**

### 8.4 Pediatric use

Safety and effectiveness in pediatric patients have not been established.

### 8.5 Geriatric use

Clinical studies of INTELENCE® did not include sufficient numbers of subjects aged 65 and over to determine whether they respond differently from younger subjects. Other reported clinical experience has not identified differences in responses between the elderly and younger subjects. In general, dose selection for an elderly patient should be cautious, reflecting the greater frequency of decreased hepatic, renal, or cardiac function, and of concomitant disease or other drug therapy.

### 8.6 Hepatic Impairment

No dose adjustment of INTELENCE® is required in patients with mild (Child-Pugh Class A) or moderate (Child-Pugh Class B) hepatic impairment. The pharmacokinetics of INTELENCE® have not been evaluated in patients with severe hepatic impairment (Child-Pugh Class C).

### 8.7 Renal Impairment

Since the renal clearance of etravirine is negligible (< 1.2%), a decrease in total body clearance is not expected in patients with renal impairment. No dose adjustments are required in patients with renal impairment. As etravirine is highly bound to plasma proteins, it is unlikely that it will be significantly removed by hemodialysis or peritoneal dialysis.

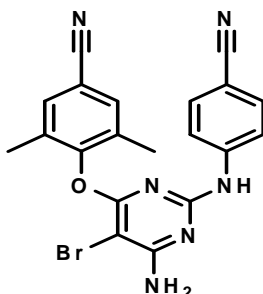
### 10 OVERDOSAGE

There is no specific antidote for overdose with INTELENCE<sup>®</sup>. Human experience of overdose with INTELENCE<sup>®</sup> is limited. The highest dose studied in healthy volunteers was 400 mg once daily. Treatment of overdose with INTELENCE<sup>®</sup> consists of general supportive measures including monitoring of vital signs and observation of the clinical status of the patient. If indicated, elimination of unabsorbed active substance is to be achieved by emesis or gastric lavage. Administration of activated charcoal may also be used to aid in removal of unabsorbed active substance. Because etravirine is highly protein bound, dialysis is unlikely to result in significant removal of the active substance.

### 11 DESCRIPTION

INTELENCE<sup>®</sup> (etravirine) is a non-nucleoside reverse transcriptase inhibitor (NNRTI) of human immunodeficiency virus type 1 (HIV-1).

The chemical name for etravirine is 4-[[6-amino-5-bromo-2-[(4-cyanophenyl)amino]-4-pyrimidinyl]oxy]-3,5-dimethylbenzonitrile. Its molecular formula is C<sub>20</sub>H<sub>15</sub>BrN<sub>6</sub>O and its molecular weight is 435.28. Etravirine has the following structural formula:



Etravirine is a white to slightly yellowish brown powder. Etravirine is practically insoluble in water over a wide pH range. It is very slightly soluble in propylene glycol and slightly soluble in ethanol. Etravirine is soluble in polyethylene glycol (PEG)400 and freely soluble in some organic solvents (e.g., N,N-dimethylformamide and tetrahydrofuran).

INTELENCE<sup>®</sup> 100 mg tablets are available as white to off-white, oval tablets for oral administration. Each 100 mg tablet contains 100 mg of etravirine and the inactive ingredients hypromellose, microcrystalline cellulose, colloidal silicon dioxide, croscarmellose sodium, magnesium stearate and lactose monohydrate.

INTELENCE<sup>®</sup> 200 mg tablets are available as white to off-white, biconvex, oblong tablets for oral administration. Each 200 mg tablet contains 200 mg of etravirine and the inactive ingredients hypromellose, silicified microcrystalline cellulose, microcrystalline cellulose, colloidal silicon dioxide, croscarmellose sodium and magnesium stearate.

## 12 CLINICAL PHARMACOLOGY

### 12.1 Mechanism of Action

Etravirine is an antiviral drug [see *Clinical Pharmacology (12.4)*].

### 12.2 Pharmacodynamics

#### *Effects on Electrocardiogram*

In a randomized, double-blind, active, and placebo-controlled crossover study, 41 healthy subjects were administered INTELENCE<sup>®</sup> 200 mg b.i.d., INTELENCE<sup>®</sup> 400 mg q.d., placebo, and moxifloxacin 400 mg. After 8 days of dosing, etravirine did not prolong the QT interval. The maximum mean (upper 1-sided 95% CI) baseline and placebo-adjusted QTcF were 0.6 ms (3.3 ms) for 200 mg b.i.d. and -1.0 ms (2.5 ms) for 400 mg q.d. dosing regimens.

### 12.3 Pharmacokinetics

#### *Pharmacokinetics in Adults*

The pharmacokinetic properties of INTELENCE<sup>®</sup> were determined in healthy adult subjects and in treatment-experienced HIV-1-infected adult subjects. The systemic exposures (AUC) to etravirine were lower in HIV-1-infected subjects than in healthy subjects.

**Table 4: Population Pharmacokinetic Estimates of Etravirine 200 mg b.i.d. in HIV-1-Infected Subjects (Integrated Data from Phase 3 Trials at Week 48)\***

Parameter	Etravirine 200 mg b.i.d. N = 575
AUC <sub>12h</sub> (ng•h/mL)	
Geometric Mean ± Standard Deviation	4522 ± 4710
Median (Range)	4380 (458 - 59084)
C <sub>0h</sub> (ng/mL)	
Geometric Mean ± Standard Deviation	297 ± 391
Median (Range)	298 (2 - 4852)

\* All HIV-1-infected subjects enrolled in Phase 3 clinical trials received darunavir/ritonavir 600/100 mg b.i.d. as part of their background regimen. Therefore, the pharmacokinetic parameter estimates shown in Table 4 account for reductions in the pharmacokinetic parameters of etravirine due to co-administration of INTELENCE<sup>®</sup> with darunavir/ritonavir.

Note: The median protein binding adjusted EC50 for MT4 cells infected with HIV-1/IIIB *in vitro* = 4 ng/mL.

#### *Absorption and Bioavailability*

Following oral administration, etravirine was absorbed with a T<sub>max</sub> of about 2.5 to 4 hours. The absolute oral bioavailability of INTELENCE<sup>®</sup> is unknown.

In healthy subjects, the absorption of etravirine is not affected by co-administration of oral ranitidine or omeprazole, drugs that increase gastric pH.

#### *Effects of Food on Oral Absorption*

The systemic exposure (AUC) to etravirine was decreased by about 50% when INTELENCE<sup>®</sup> was administered under fasting conditions, as compared to when INTELENCE<sup>®</sup> was administered following a meal. Therefore, INTELENCE<sup>®</sup> should always be taken following a meal. Within the range of meals studied, the systemic exposures to etravirine were similar. The total caloric content of the various meals evaluated ranged from 345 kilocalories (17 grams fat) to 1160 kilocalories (70 grams fat). [see *Dosage and Administration (2)*].

#### *Distribution*

Etravirine is about 99.9% bound to plasma proteins, primarily to albumin (99.6%) and alpha 1-acid glycoprotein (97.66%-99.02%) *in vitro*. The distribution of etravirine into compartments other than plasma (e.g., cerebrospinal fluid, genital tract secretions) has not been evaluated in humans.

### *Metabolism*

*In vitro* experiments with human liver microsomes (HLMs) indicate that etravirine primarily undergoes metabolism by CYP3A, CYP2C9, and CYP2C19 enzymes. The major metabolites, formed by methyl hydroxylation of the dimethylbenzotrile moiety, were at least 90% less active than etravirine against wild-type HIV in cell culture.

### *Elimination*

After single dose oral administration of 800 mg <sup>14</sup>C-etravirine, 93.7% and 1.2% of the administered dose of <sup>14</sup>C-etravirine was recovered in the feces and urine, respectively. Unchanged etravirine accounted for 81.2% to 86.4% of the administered dose in feces. Unchanged etravirine was not detected in urine. The mean ( $\pm$  standard deviation) terminal elimination half-life of etravirine was about 41 ( $\pm$  20) hours.

### Special Populations

#### *Hepatic Impairment*

Etravirine is primarily metabolized by the liver. The steady state pharmacokinetic parameters of etravirine were similar after multiple dose administration of INTELENCE<sup>®</sup> to subjects with normal hepatic function (n = 16), mild hepatic impairment (Child-Pugh Class A, n = 8), and moderate hepatic impairment (Child-Pugh Class B, n = 8). The effect of severe hepatic impairment on the pharmacokinetics of etravirine has not been evaluated.

#### *Hepatitis B and/or Hepatitis C Virus Co-infection*

Population pharmacokinetic analysis of the TMC125-C206 and TMC125-C216 trials showed reduced clearance for etravirine in HIV-1-infected subjects with hepatitis B and/or C virus co-infection. Based upon the safety profile of INTELENCE<sup>®</sup> [see *Adverse Reactions* (6)], no dose adjustment is necessary in patients co-infected with hepatitis B and/or C virus.

#### *Renal Impairment*

The pharmacokinetics of etravirine have not been studied in patients with renal impairment. The results from a mass balance study with <sup>14</sup>C-etravirine showed that <1.2% of the administered dose of etravirine is excreted in the urine as metabolites. No unchanged drug was detected in the urine. As etravirine is highly bound to plasma proteins, it is unlikely that it will be significantly removed by hemodialysis or peritoneal dialysis.

#### *Gender*

No significant pharmacokinetic differences have been observed between men and women. A limited number of women were included in clinical studies.

#### *Race*

Population pharmacokinetic analysis of etravirine in HIV-infected subjects did not show an effect of race on exposure to etravirine.

#### *Geriatric Patients*

Population pharmacokinetic analysis in HIV-infected subjects showed that etravirine pharmacokinetics are not considerably different within the age range (18 to 77 years) evaluated [see *Use in Specific Populations* (8.5)].

#### *Pediatric Patients*

The pharmacokinetics of etravirine in pediatric patients have not been evaluated. Dosing recommendations for pediatric patients cannot be made due to insufficient data.

#### *Drug Interactions*

[See also *Drug Interactions* (7).]

Etravirine is a substrate of CYP3A, CYP2C9, and CYP2C19. Therefore, co-administration of INTELENCE<sup>®</sup> with drugs that induce or inhibit CYP3A, CYP2C9, and CYP2C19 may alter the therapeutic effect or adverse reaction profile of INTELENCE<sup>®</sup>.

Etravirine is an inducer of CYP3A and inhibitor of CYP2C9, CYP2C19 and P-glycoprotein. Therefore, co-administration of drugs that are substrates of CYP3A, CYP2C9 and CYP2C19 or are transported by P-glycoprotein with INTELENCE<sup>®</sup> may alter the therapeutic effect or adverse reaction profile of the co-administered drug(s).

Drug interaction studies were performed with INTELENCE<sup>®</sup> and other drugs likely to be co-administered and some drugs commonly used as probes for pharmacokinetic interactions. The effects of co-administration of other drugs on the AUC, C<sub>max</sub>, and C<sub>min</sub> values of etravirine are summarized in Table 5 (effect of other drugs on INTELENCE<sup>®</sup>). The effect of co-administration of INTELENCE<sup>®</sup> on the AUC, C<sub>max</sub>, and C<sub>min</sub> values of other drugs are summarized in Table 6 (effect of INTELENCE<sup>®</sup> on other drugs). For information regarding clinical recommendations, see *Drug Interactions* (7).

<b>Table 5: Drug Interactions: Pharmacokinetic Parameters for <u>Etravirine</u> in the Presence of Co-administered Drugs</b>						
Co-administered Drug	Dose/Schedule of Co-administered Drug	N	Exposure	Mean Ratio of <u>Etravirine</u> Pharmacokinetic Parameters 90% CI; No Effect = 1.00		
				C <sub>max</sub>	AUC	C <sub>min</sub>
<b>Co-Administration With Protease Inhibitors (PIs)</b>						
Atazanavir	400 mg q.d.	14	↑	1.47 (1.36-1.59)	1.50 (1.41-1.59)	1.58 (1.46-1.70)
Atazanavir/ ritonavir*	300/100 mg q.d.	14	↑	1.30 (1.17-1.44)	1.30 (1.18-1.44)	1.26 (1.12-1.42)
Darunavir/ ritonavir	600/100 mg b.i.d.	14	↓	0.68 (0.57-0.82)	0.63 (0.54-0.73)	0.51 (0.44-0.61)
Lopinavir/ ritonavir (tablet)	400/100 mg b.i.d.	16	↓	0.70 (0.64-0.78)	0.65 (0.59-0.71)	0.55 (0.49-0.62)
Ritonavir	600 mg b.i.d.	11	↓	0.68 (0.55-0.85)	0.54 (0.41-0.73)	N.A.
Saquinavir/ ritonavir	1000/100 mg b.i.d.	14	↓	0.63 (0.53-0.75)	0.67 (0.56-0.80)	0.71 (0.58-0.87)
Tipranavir/ ritonavir	500/200 mg b.i.d.	19	↓	0.29 (0.22-0.40)	0.24 (0.18-0.33)	0.18 (0.13-0.25)
<b>Co-Administration With Nucleoside Reverse Transcriptase Inhibitors (NRTIs)</b>						
Didanosine	400 mg q.d.	15	↔	1.16 (1.02-1.32)	1.11 (0.99-1.25)	1.05 (0.93-1.18)
Tenofovir disoproxil fumarate	300 mg q.d.	23	↓	0.81 (0.75-0.88)	0.81 (0.75-0.88)	0.82 (0.73-0.91)
<b>Co-Administration With CCR5 Antagonists</b>						
Maraviroc	300 mg b.i.d.	14	↔	1.05 (0.95-1.17)	1.06 (0.99-1.14)	1.08 (0.98-1.19)
Maraviroc (when co- administered with darunavir/ ritonavir) <sup>†</sup>	150/600/100 mg b.i.d.	10	↔	1.08 (0.98-1.20)	1.00 (0.86-1.15)	0.81 (0.65-1.01)
<b>Co-Administration With Integrase Strand Transfer Inhibitors</b>						
Raltegravir	400 mg b.i.d.	19	↔	1.04 (0.97-1.12)	1.10 (1.03-1.16)	1.17 (1.10-1.26)
<b>Co-Administration With Other Drugs</b>						
Atorvastatin	40 mg q.d.	16	↔	0.97 (0.93-1.02)	1.02 (0.97-1.07)	1.10 (1.02-1.19)
Clarithromycin	500 mg b.i.d.	15	↑	1.46 (1.38-1.56)	1.42 (1.34-1.50)	1.46 (1.36-1.58)
Fluconazole	200 mg q.a.m.	16	↑	1.75 (1.60-1.91)	1.86 (1.73-2.00)	2.09 (1.90-2.31)
Omeprazole	40 mg q.d.	18	↑	1.17 (0.96-1.43)	1.41 (1.22-1.62)	N.A.
Paroxetine	20 mg q.d.	16	↔	1.05 (0.96-1.15)	1.01 (0.93-1.10)	1.07 (0.98-1.17)
Ranitidine	150 mg b.i.d.	18	↓	0.94 (0.75-1.17)	0.86 (0.76-0.97)	N.A.
Rifabutin	300 mg q.d.	12	↓	0.63 (0.53-0.74)	0.63 (0.54-0.74)	0.65 (0.56-0.74)
Voriconazole	200 mg b.i.d.	16	↑	1.26	1.36	1.52

			(1.16-1.38)	(1.25-1.47)	(1.41-1.64)
<p>CI = Confidence Interval; N = number of subjects with data; N.A. = not available; ↑ = increase; ↓ = decrease; ↔ = no change; q.d. = once daily; b.i.d. = twice daily; q.a.m. = once daily in the morning</p> <p>* The expected increase in systemic exposure of etravirine when co-administered with atazanavir/ritonavir (~100%) as outlined in Table 3 is theoretical and based on comparing exposures of etravirine in a drug-drug interaction study with exposure in the pivotal Phase 3 trials (in which darunavir/ritonavir was part of the background regimen).</p> <p>† The reference for etravirine exposure is the pharmacokinetic parameters of etravirine in the presence of darunavir/ritonavir.</p>					

<b>Table 6: Drug Interactions: Pharmacokinetic Parameters for Co-administered Drugs in the Presence of INTELENCE®</b>						
Co-administered Drug	Dose/Schedule of Co-administered Drug	N	Exposure	Mean Ratio of Co-administered Drug Pharmacokinetic Parameters 90% CI; No effect = 1.00		
				C <sub>max</sub>	AUC	C <sub>min</sub>
<b>Co-Administration With Protease Inhibitors (PIs)</b>						
Atazanavir	400 mg q.d.	14	↓	0.97 (0.73-1.29)	0.83 (0.63-1.09)	0.53 (0.38-0.73)
Atazanavir/ ritonavir	300/100 mg q.d.	13	↓	0.97 (0.89-1.05)	0.86 (0.79-0.93)	0.62 (0.55-0.71)
Darunavir/ ritonavir	600/100 mg b.i.d.	15	↔	1.11 (1.01-1.22)	1.15 (1.05-1.26)	1.02 (0.90-1.17)
Fosamprenavir/ ritonavir	700/100 mg b.i.d.	8	↑	1.62 (1.47-1.79)	1.69 (1.53-1.86)	1.77 (1.39-2.25)
Lopinavir/ ritonavir (tablet)	400/100 mg b.i.d.	16	↔	0.89 (0.82-0.96)	0.87 (0.83-0.92)	0.80 (0.73-0.88)
Saquinavir/ ritonavir	1000/100 mg b.i.d.	15	↔	1.00 (0.70-1.42)	0.95 (0.64-1.42)	0.80 (0.46-1.38)
Tipranavir/ ritonavir	500/200 mg b.i.d.	19	↑	1.14 (1.02-1.27)	1.18 (1.03-1.36)	1.24 (0.96-1.59)
<b>Co-Administration With Nucleoside Reverse Transcriptase Inhibitors (NRTIs)</b>						
Didanosine	400 mg q.d.	14	↔	0.91 (0.58-1.42)	0.99 (0.79-1.25)	N.A.
Tenofovir disoproxil fumarate	300 mg q.d.	19	↔	1.15 (1.04-1.27)	1.15 (1.09-1.21)	1.19 (1.13-1.26)
<b>Co-Administration With CCR5 Antagonists</b>						
Maraviroc	300 mg b.i.d.	14	↓	0.40 (0.28-0.57)	0.47 (0.38-0.58)	0.61 (0.53-0.71)
Maraviroc (when co-administered with darunavir/ritonavir)*	150/600/100 mg b.i.d.	10	↑	1.77 (1.20-2.60)	3.10 (2.57-3.74)	5.27 (4.51-6.15)
<b>Co-Administration With Integrase Strand Transfer Inhibitors</b>						
Raltegravir	400 mg b.i.d.	19	↓	0.89 (0.68-1.15)	0.90 (0.68-1.18)	0.66 (0.34-1.26)

<b>Co-Administration With Other Drugs</b>						
Atorvastatin	40 mg q.d.	16	↓	1.04 (0.84-1.30)	0.63 (0.58-0.68)	N.A.
2-hydroxy-atorvastatin		16	↑	1.76 (1.60-1.94)	1.27 (1.19-1.36)	N.A.
Buprenorphine	Individual dose regimen ranging from 4/1 mg to 16/4 mg q.d.	16	↓	0.89 (0.76-1.05)	0.75 (0.66-0.84)	0.60 (0.52-0.68)
Norbuprenorphine		16	↔	1.08 (0.95-1.23)	0.88 (0.81-0.96)	0.76 (0.67-0.87)
Clarithromycin	500 mg b.i.d.	15	↓	0.66 (0.57-0.77)	0.61 (0.53-0.69)	0.47 (0.38-0.57)
14-hydroxy-clarithromycin		15	↑	1.33 (1.13-1.56)	1.21 (1.05-1.39)	1.05 (0.90-1.22)
Digoxin	0.5 mg single dose	16	↑	1.19 (0.96-1.49)	1.18 (0.90-1.56)	N.A.
Ethinylestradiol	0.035 mg q.d.	16	↑	1.33 (1.21-1.46)	1.22 (1.13-1.31)	1.09 (1.01-1.18)
Norethindrone	1 mg q.d.	16	↔	1.05 (0.98-1.12)	0.95 (0.90-0.99)	0.78 (0.68-0.90)
Fluconazole	200 mg q.a.m.	15	↔	0.92 (0.85-1.00)	0.94 (0.88-1.01)	0.91 (0.84-0.98)
R(-) Methadone	Individual dose regimen ranging from 60 to 130 mg/day	16	↔	1.02 (0.96-1.09)	1.06 (0.99-1.13)	1.10 (1.02-1.19)
S(+) Methadone		16	↔	0.89 (0.83-0.97)	0.89 (0.82-0.96)	0.89 (0.81-0.98)
Paroxetine	20 mg q.d.	16	↔	1.06 (0.95-1.20)	1.03 (0.90-1.18)	0.87 (0.75-1.02)
Rifabutin	300 mg q.d.	12	↓	0.90 (0.78-1.03)	0.83 (0.75-0.94)	0.76 (0.66-0.87)
25-O-desacetyl-rifabutin	300 mg q.d.	12	↓	0.85 (0.72-1.00)	0.83 (0.74-0.92)	0.78 (0.70-0.87)
Sildenafil	50 mg single dose	15	↓	0.55 (0.40-0.75)	0.43 (0.36-0.51)	N.A.
N-desmethyl-sildenafil		15	↓	0.75 (0.59-0.96)	0.59 (0.52-0.68)	N.A.
Voriconazole	200 mg b.i.d.	14	↑	0.95 (0.75-1.21)	1.14 (0.88-1.47)	1.23 (0.87-1.75)
CI = Confidence Interval; N = number of subjects with data; N.A. = not available; ↑ = increase; ↓ = decrease; ↔ = no change; q.d. = once daily ; b.i.d. = twice daily; q.a.m. = once daily in the morning * compared to maraviroc 150 mg b.i.d.						

## 12.4 Microbiology

### *Mechanism of Action*

Etravirine is an NNRTI of human immunodeficiency virus type 1 (HIV-1). Etravirine binds directly to reverse transcriptase (RT) and blocks the RNA-dependent and DNA-dependent DNA polymerase activities by causing a disruption of the enzyme's catalytic site. Etravirine does not inhibit the human DNA polymerases  $\alpha$ ,  $\beta$ , and  $\gamma$ .

### *Antiviral Activity in Cell Culture*

Etravirine exhibited activity against laboratory strains and clinical isolates of wild-type HIV-1 in acutely infected T-cell lines, human peripheral blood mononuclear cells, and human monocytes/macrophages with median EC<sub>50</sub> values ranging from 0.9 to 5.5 nM (i.e., 0.4 to 2.4 ng/mL). Etravirine demonstrated antiviral activity in cell culture against a broad panel of HIV-1 group M isolates (subtype A, B, C, D, E, F, G) with EC<sub>50</sub> values ranging from 0.29 to 1.65 nM and EC<sub>50</sub> values ranging from 11.5 to 21.7 nM against group O primary isolates. Etravirine did not show antagonism when studied in combination with the following antiretroviral drugs—the NNRTIs delavirdine, efavirenz, and nevirapine; the N(t)RTIs abacavir, didanosine, emtricitabine, lamivudine, stavudine, tenofovir, zalcitabine, and zidovudine; the PIs amprenavir, atazanavir, darunavir, indinavir, lopinavir, nelfinavir, ritonavir, saquinavir, and tipranavir; the fusion inhibitor enfuvirtide; the integrase strand transfer inhibitor raltegravir and the CCR5 co-receptor antagonist maraviroc.

### Resistance

#### *In Cell Culture*

Etravirine-resistant strains were selected in cell culture originating from wild-type HIV-1 of different origins and subtypes, as well as NNRTI resistant HIV-1. Development of reduced susceptibility to etravirine typically required more than one substitution in reverse transcriptase of which the following were observed most frequently: L100I, E138K, E138G, V179I, Y181C, and M230I.

#### *In Treatment-Experienced Subjects*

In the Phase 3 trials TMC125-C206 and TMC125-C216, substitutions that developed most commonly in subjects with virologic failure at Week 48 to the INTELENCE<sup>®</sup>-containing regimen were V179F, V179I, and Y181C which usually emerged in a background of multiple other NNRTI resistance-associated substitutions. In all the trials conducted with INTELENCE<sup>®</sup> in HIV-1 infected subjects, the following substitutions emerged most commonly: L100I, E138G, V179F, V179I, Y181C and H221Y. Other NNRTI-resistance associated substitutions which emerged on etravirine treatment in < 10% of the virologic failure isolates included K101E/H/P, K103N/R, V106I/M, V108I, Y181I, Y188L, V189I, G190S/C, N348I and R356K. The emergence of NNRTI substitutions on etravirine treatment contributed to decreased susceptibility to etravirine with a median fold-change in etravirine susceptibility of 40-fold from reference and a median fold-change of 6-fold from baseline.

### Cross-Resistance

#### *Site-Directed NNRTI Mutant Virus*

Etravirine showed antiviral activity against 55 of 65 HIV-1 strains (85%) with single amino acid substitutions at RT positions associated with NNRTI resistance, including the most commonly found K103N. The single amino acid substitutions associated with an etravirine reduction in susceptibility > 3-fold were K101A, K101P, K101Q, E138G, E138Q, Y181C, Y181I, Y181T, Y181V, and M230L, and of these, the greatest reductions were Y181I (13-fold change in EC<sub>50</sub> value) and Y181V (17-fold change in EC<sub>50</sub> value). Mutant strains containing a single NNRTI resistance associated substitution (K101P, K101Q, E138Q, or M230L) had cross-resistance between etravirine and efavirenz. The majority (39 of 61; 64%) of the NNRTI mutant viruses with 2 or 3 amino acid substitutions associated with NNRTI resistance had decreased susceptibility to etravirine (fold-change > 3). The highest levels of resistance to etravirine were observed for HIV-1 harboring a combination of substitutions V179F + Y181C (187 fold-change), V179F + Y181I (123 fold-change), or V179F + Y181C + F227C (888 fold-change).

*Clinical Isolates*

Etravirine retained a fold-change  $\leq 3$  against 60% of 6171 NNRTI-resistant clinical isolates. In the same panel, the proportion of clinical isolates resistant to delavirdine, efavirenz and/or nevirapine (defined as a fold-change above their respective biological cutoff values in the assay) was 79%, 87%, and 95%, respectively. In TMC125-C206 and TMC125-C216, 34% of the baseline isolates had decreased susceptibility to etravirine (fold-change  $> 3$ ) and 60%, 69%, and 78% of all baseline isolates were resistant to delavirdine, efavirenz, and nevirapine, respectively. Of subjects who received etravirine and were virologic failures in TMC125-C206 and TMC125-C216, 90%, 84%, and 96% of viral isolates obtained at the time of treatment failure were resistant to delavirdine, efavirenz, and nevirapine, respectively. Therefore, cross-resistance to delavirdine, efavirenz, and/or nevirapine is expected after virologic failure with an etravirine-containing regimen for the virologic failure isolates.

*Baseline Genotype/Phenotype and Virologic Outcome Analyses*

In TMC125-C206 and TMC125-C216, the presence at baseline of the substitutions L100I, E138A, I167V, V179D, V179F, Y181I, Y181V, or G190S was associated with a decreased virologic response to etravirine. Additional substitutions associated with a decreased virologic response to etravirine when in the presence of 3 or more additional 2008 IAS-USA defined NNRTI substitutions include A98G, K101H, K103R, V106I, V179T, and Y181C. The presence of K103N, which was the most prevalent NNRTI substitution in TMC125-C206 and TMC125-C216 at baseline, did not affect the response in the INTELENCE<sup>®</sup> arm. Overall, response rates to etravirine decreased as the number of baseline NNRTI substitutions increased (shown as the proportion of subjects achieving viral load  $< 50$  plasma HIV RNA copies/mL at Week 48) (Table 7).

**Table 7: Proportion of Subjects with  $< 50$  HIV-1 RNA copies/mL at Week 48 by Baseline Number of IAS-USA-Defined NNRTI Substitutions in the Non-VF Excluded Population of the Pooled TMC125-C206 and TMC125-C216 Trials**

# IAS-USA-Defined NNRTI substitutions*	Etravirine Arms N = 561	
	Re-Used/Not Used Enfuvirtide	De Novo Enfuvirtide
<b>All ranges</b>	61% (254/418)	76% (109/143)
<b>0</b>	68% (52/76)	95% (20/21)
<b>1</b>	67% (72/107)	77% (24/31)
<b>2</b>	64% (75/118)	86% (38/44)
<b>3</b>	55% (36/65)	62% (16/26)
<b><math>\geq 4</math></b>	37% (19/52)	52% (11/21)
	Placebo Arms N = 592	
<b>All ranges</b>	34% (147/435)	59% (93/157)

\* 2008 IAS-USA defined substitutions = V90I, A98G, L100I, K101E/H/P, K103N, V106A/I/M, V108I, E138A, V179D/F/T, Y181C/I/V, Y188C/H/L, G190A/S, P225H, M230L

Response rates assessed by baseline etravirine phenotype are shown in Table 8. These baseline phenotype groups are based on the select subject populations in TMC125-C206 and TMC125-C216 and are not meant to represent definitive clinical susceptibility breakpoints for INTELENCE®. The data are provided to give clinicians information on the likelihood of virologic success based on pre-treatment susceptibility to etravirine in treatment-experienced patients.

<b>Table 8: Proportion of Subjects with &lt; 50 HIV-1 RNA copies/mL at Week 48 by Baseline Phenotype and Enfuvirtide Use in the Pooled TMC125-C206 and TMC125-C216 Trials*</b>			
<b>Etravirine Fold Change</b>	<b>Etravirine Arms N = 559</b>		
	<b>Re-Used/Not Used Enfuvirtide</b>	<b>De Novo Enfuvirtide</b>	<b>Clinical Response Range</b>
<b>All ranges</b>	61% (253/416)	76% (109/143)	Overall Response
<b>0 - 3</b>	69% (188/274)	83% (75/90)	Higher than Overall Response
<b>&gt; 3 - 13</b>	50% (39/78)	66% (25/38)	Lower than Overall Response
<b>&gt; 13</b>	41% (26/64)	60% (9/15)	Lower than Overall Response
	<b>Placebo Arms N = 583</b>		
<b>All ranges</b>	34% (145/429)	60% (92/154)	

\* Non-VF excluded analysis

The proportion of virologic responders (viral load < 50 HIV-1 RNA copies/mL) by the phenotypic susceptibility score (PSS) of the background therapy, including enfuvirtide, is shown in Table 9.

<b>Table 9: Virologic Response (Viral Load &lt; 50 HIV-1 RNA copies/mL) at Week 48 by Phenotypic Susceptibility Score in the Non-VF Excluded Population of TMC125-C206 and TMC125-C216 Trials (Pooled Analysis)</b>		
	<b>INTELENCE® + BR N=559</b>	<b>Placebo + BR N=586</b>
<b>PSS*</b>		
0	43% (40/93)	5% (5/95)
1	61% (125/206)	28% (64/226)
2	77% (114/149)	59% (97/165)
≥ 3	75% (83/111)	72% (72/100)

\* The phenotypic susceptibility score (PSS) was defined as the total number of active antiretroviral drugs in the background therapy to which a subject's baseline viral isolate showed sensitivity in phenotypic resistance tests. Each drug in the background therapy was scored as a '1' or '0' based on whether the viral isolate was considered susceptible or resistant to that drug, respectively. In the calculation of the PSS, darunavir was counted as a sensitive antiretroviral if the FC ≤ 10; enfuvirtide was counted as a sensitive antiretroviral if it had not been used previously. INTELENCE® was not included in this calculation.

## 13 NONCLINICAL TOXICOLOGY

### 13.1 Carcinogenesis, Mutagenesis, Impairment of Fertility

#### *Carcinogenesis and Mutagenesis*

Etravirine was evaluated for carcinogenic potential by oral gavage administration to mice and rats for up to approximately 104 weeks. Daily doses of 50, 200 and 400 mg/kg were administered to mice and doses of 70, 200 and 600 mg/kg were administered to rats in the initial period of approximately 41-52 weeks. The high and middle doses were subsequently adjusted due to tolerability and reduced by 50% in mice and by 50-66% in rats to allow for completion of the studies. In the mouse study, statistically significant increases in the incidences of hepatocellular carcinoma and incidences of hepatocellular adenomas or carcinomas combined were observed in treated females. In the rat study, no statistically significant increases in tumor findings were observed in either sex. The relevance of these liver tumor findings in mice to humans is not known. Because of tolerability of the formulation in these rodent studies, maximum systemic drug exposures achieved at the doses tested were lower than those in humans at the clinical dose (400 mg/day), with animal vs. human AUC ratios being 0.6-fold (mice) and 0.2-0.7-fold (rats).

Etravirine tested negative in the *in vitro* Ames reverse mutation assay, *in vitro* chromosomal aberration assay in human lymphocyte, and *in vitro* clastogenicity mouse lymphoma assay, tested in the absence and presence of a metabolic activation system. Etravirine did not induce chromosomal damage in the *in vivo* micronucleus test in mice. [See *Nonclinical Toxicology* (13.2).]

#### *Impairment of Fertility*

No effects on fertility and early embryonic development were observed when etravirine was tested in rats at maternal doses up to 500 mg/kg/day, resulting in systemic drug exposure up to the recommended human dose (400 mg/day).

### 13.2 Animal Toxicology and/or Pharmacology

#### *Reproductive Toxicology Studies*

Developmental toxicity studies were performed in rabbits (at oral doses up to 375 mg/kg/day) and rats (at oral doses up to 1000 mg/kg/day). In both species, no treatment-related embryo-fetal effects including malformations were observed. In addition, no treatment-related effects were observed in a separate pre- and postnatal study performed in rats at oral doses up to 500 mg/kg/day. The systemic drug exposures achieved in these animal studies were equivalent to those at the recommended human dose (400 mg/day).

## 14 CLINICAL STUDIES

### 14.1 Treatment-Experienced Subjects

The clinical efficacy of INTELENCE<sup>®</sup> is derived from the analyses of 48-week data from 2 ongoing, randomized, double-blinded, placebo-controlled, Phase 3 trials, TMC125-C206 and TMC125-C216 (DUET-1 and DUET-2). These trials are identical in design and the results below are pooled data from the two trials.

TMC125-C206 and TMC125-C216 are Phase 3 studies designed to evaluate the safety and antiretroviral activity of INTELENCE<sup>®</sup> in combination with a background regimen (BR) as compared to placebo in combination with a BR. Eligible subjects were treatment-experienced HIV-1-infected patients with plasma HIV-1 RNA > 5000 copies/mL while on a stable antiretroviral regimen for at least 8 weeks. In addition, subjects had 1 or more NNRTI resistance-associated mutations at screening or from prior genotypic analysis, and 3 or more of the following primary PI mutations at screening: D30N, V32I, L33F, M46I/L, I47A/V, G48V, I50L/V, V82A/F/L/S/T, I84V, N88S, or L90M. Randomization was stratified by the intended use of enfuvirtide (ENF) in the BR, previous use of darunavir/ritonavir (DRV/rtv), and screening viral load. Virologic response was defined as undetectable viral load (< 50 HIV-1 RNA copies/mL) at 48 weeks.

All study subjects received DRV/rtv as part of their BR, and at least 2 other investigator-selected antiretroviral drugs (N[t]RTIs with or without ENF). Of INTELENCE<sup>®</sup>-treated subjects, 25.5% used ENF for the first time (*de novo*) and 20.0% re-used ENF. Of placebo-treated subjects, 26.5% used *de novo* ENF and 20.4% re-used ENF.

In the pooled analysis for TMC125-C206 and TMC125-C216, demographics and baseline characteristics were balanced between the INTELENCE<sup>®</sup> arm and the placebo arm. Table 10 displays selected demographic and baseline disease characteristics of the subjects in the INTELENCE<sup>®</sup> and placebo arms.

<b>Table 10: Demographic and Baseline Disease Characteristics of Subjects in the TMC125-C206 and TMC125-C216 Trials (Pooled Analysis)</b>		
	<b>Pooled TMC125-C206 and TMC125-C216 Trials</b>	
	<b>INTELENCE® + BR N=599</b>	<b>Placebo + BR N=604</b>
<b>Demographic Characteristics</b>		
Median Age, years (range)	46 (18-77)	45 (18-72)
Sex		
Male	90.0%	88.6%
Female	10.0%	11.4%
Race		
White	70.1%	69.8%
Black	13.2%	13.0%
Hispanic	11.3%	12.2%
Asian	1.3%	0.6%
Other	4.1%	4.5%
<b>Baseline Disease Characteristics</b>		
Median Baseline Plasma HIV-1 RNA (range), log <sub>10</sub> copies/mL	4.8 (2.7-6.8)	4.8 (2.2-6.5)
Percentage of Subjects with Baseline Viral Load:		
< 30,000 copies/mL	27.5%	28.8%
≥ 30,000 copies/mL and < 100,000 copies/mL	34.4%	35.3%
≥ 100,000 copies/mL	38.1%	35.9%
Median Baseline CD4+ Cell Count (range), cells/mm <sup>3</sup>	99 (1-789)	109 (0-912)
Percentage of Subjects with Baseline CD4+ Cell Count:		
< 50 cells/mm <sup>3</sup>	35.6%	34.7%
≥ 50 cells/mm <sup>3</sup> and < 200 cells/mm <sup>3</sup>	34.8%	34.5%
≥ 200 cells/mm <sup>3</sup>	29.6%	30.8%
Median (range) Number of Primary PI Mutations*	4 (0-7)	4 (0-8)
Percentage of Subjects with Previous Use of NNRTIs:		
0	8.2%	7.9%
1	46.9%	46.7%
>1	44.9%	45.4%
Percentage of Subjects with Previous Use of the following NNRTIs:		
Efavirenz	70.3%	72.5%
Nevirapine	57.1%	58.6%
Delavirdine	13.7%	12.6%
Median (range) Number of NNRTI RAMs†	2 (0-8)	2 (0-7)
Median Fold Change of the Virus for the Following NNRTIs:		
Delavirdine	27.3	26.1
Efavirenz	63.9	45.4
Etravirine	1.6	1.5
Nevirapine	74.3	74.0
Percentage of Subjects with Previous Use of a Fusion Inhibitor	39.6%	42.2%

Percentage of Subjects with a Phenotypic Sensitivity Score (PSS) for the background therapy † of:		
0	17.0%	16.2%
1	36.5%	38.7%
2	26.9%	27.8%
≥ 3	19.7%	17.3%
RAMs = Resistance-Associated Mutations, BR=background regimen FC = fold change in EC <sub>50</sub> *IAS-USA primary PI mutations [August/September 2007]: D30N, V32I, L33F, M46I/L, I47A/V, G48V, I50L/V, I54L/M, L76V, V82A/F/L/S/T, I84V, N88S, L90M †Tibotec NNRTI RAMs [June 2008]: A98G, V90I, L100I, K101E/H/P/Q, K103H/N/S/T, V106A/M/I, V108I, E138A/G/K/Q, V179D/E/F/G/I/T, Y181C/I/V, Y188C/H/L, V189I, G190A/C/E/Q/S, H221Y, P255H, F227C/L, M230I/L, P236L, K238N/T, Y318F ‡ The PSS was calculated for the background therapy (as determined on Day 7). Percentages are based on the number of subjects with available phenotype data. For fusion inhibitors (enfuvirtide), subjects were considered resistant if the drug was used in previous therapy up to baseline. INTELENCE® is not included in this calculation.		

Efficacy at Week 48 for subjects in the INTELENCE® and placebo arms for the pooled TMC125-C206 and TMC125-C216 study populations are shown in Table 11.

<b>Table 11: Outcomes of Treatment at Week 48 of the TMC125-C206 and TMC125-C216 Trials (Pooled Analysis)</b>		
	<b>Pooled TMC125-C206 and TMC125-C216 Trials</b>	
	<b>INTELENCE® + BR N=599</b>	<b>Placebo + BR N=604</b>
Virologic Responders at Week 48 Viral Load < 50 HIV-1 RNA copies/mL	359 (60%)	232 (38%)
Virologic Failures (VF) at Week 48 Viral Load ≥ 50 HIV-1 RNA copies/mL	123 (21%)	201 (33%)
Death	11 (2%)	19 (3%)
Discontinuations before Week 48:		
due to VF	58 (10%)	110 (18%)
due to Adverse Events	31 (5%)	14 (2%)
due to other reasons	17 (3%)	28 (5%)
BR=background regimen		

At Week 48, 70.8% of INTELENCE®-treated subjects achieved HIV-1 RNA < 400 copies/mL as compared to 46.4% of placebo-treated subjects. The mean decrease in plasma HIV-1 RNA from baseline to Week 48 was – 2.23 log<sub>10</sub> copies/mL for INTELENCE®-treated subjects and –1.46 log<sub>10</sub> copies/mL for placebo-treated subjects. The mean CD4+ cell count increase from baseline for INTELENCE®-treated subjects was 96 cells/mm<sup>3</sup> and 68 cells/mm<sup>3</sup> for placebo-treated subjects.

Of the study population who either re-used or did not use ENF, 57.4% of INTELENCE®-treated subjects and 31.7% of placebo-treated subjects achieved HIV-1 RNA < 50 copies/mL. Of the study population using ENF *de novo*, 67.3% of INTELENCE®-treated subjects and 57.2% of placebo-treated subjects achieved HIV-1 RNA < 50 copies/mL.

Treatment-emergent CDC category C events occurred in 4% of INTELENCE®-treated subjects and 8.4% of placebo-treated subjects.

Study TMC125-C227 was a randomized, exploratory, active-controlled, open-label, Phase 2b trial. Eligible subjects were treatment-experienced, PI-naïve HIV-1-infected patients with genotypic evidence of NNRTI

resistance at screening or from prior genotypic analysis. The virologic response was evaluated in 116 subjects who were randomized to INTELENCE<sup>®</sup> (n=59) or an investigator-selected PI (n=57), each given with 2 investigator-selected N(t)RTIs. INTELENCE<sup>®</sup>-treated subjects had lower antiviral responses associated with reduced susceptibility to the N(t)RTIs and to INTELENCE<sup>®</sup> as compared to the control PI-treated subjects.

## 16 HOW SUPPLIED/STORAGE AND HANDLING

INTELENCE<sup>®</sup> 100 mg tablets are supplied as white to off-white, oval tablets containing 100 mg of etravirine. Each tablet is debossed with “TMC125” on one side and “100” on the other side.

INTELENCE<sup>®</sup> 200 mg tablets are supplied as white to off-white, biconvex, oblong tablets containing 200 mg of etravirine. Each tablet is debossed with “T200” on one side.

INTELENCE<sup>®</sup> tablets are packaged in bottles in the following configuration:

100 mg tablets—bottles of 120 (NDC 59676-570-01). Each bottle contains 3 desiccant pouches.

200 mg tablets—bottles of 60 (NDC 59676-571-01). Each bottle contains 3 desiccant pouches.

Store INTELENCE<sup>®</sup> tablets at 25°C (77°F); with excursions permitted to 15°-30°C (59°-86°F) [see USP controlled room temperature]. Store in the original bottle. Keep the bottle tightly closed in order to protect from moisture. Do not remove the desiccant pouches.

## 17 PATIENT COUNSELING INFORMATION

[See FDA-approved patient labeling].

A statement to patients and healthcare providers is included on the product's bottle label: **ALERT: Find out about medicines that should NOT be taken with INTELENCE<sup>®</sup> from your healthcare provider.** A Patient Package Insert for INTELENCE<sup>®</sup> is available for patient information.

Patients should be informed that INTELENCE<sup>®</sup> is not a cure for HIV infection. Patients must stay on continuous HIV therapy to control HIV infection and decrease HIV-related illnesses. Patients should be advised to continue to practice safer sex and to use latex or polyurethane condoms to lower the chance of sexual contact with any body fluids such as semen, vaginal secretions or blood. Patients should also be advised to never re-use or share needles. Patients should be told that sustained decreases in plasma HIV RNA have been associated with a reduced risk of progression to AIDS and death. Patients should remain under the care of a physician while using INTELENCE<sup>®</sup>.

Patients should be advised to take INTELENCE<sup>®</sup> following a meal twice a day as prescribed. The type of food does not affect the exposure to etravirine. Patients should be instructed to swallow the tablets as a whole with a liquid such as water. Patients who are unable to swallow the INTELENCE<sup>®</sup> tablets whole may disperse the tablets in a glass of water. Once dispersed, patients should stir the dispersion well, and drink it immediately. The glass should be rinsed with water several times, and each rinse completely swallowed to ensure the entire dose is consumed. INTELENCE<sup>®</sup> must always be used in combination with other antiretroviral drugs. Patients should not alter the dose of INTELENCE<sup>®</sup> or discontinue therapy with INTELENCE<sup>®</sup> without consulting their physician. If the patient misses a dose of INTELENCE<sup>®</sup> within 6 hours of the time it is usually taken, the patient should be told to take INTELENCE<sup>®</sup> following a meal as soon as possible, and then take the next dose of INTELENCE<sup>®</sup> at the regularly scheduled time. If a patient misses a dose of INTELENCE<sup>®</sup> by more than 6 hours of the time it is usually taken, the patient should be told not to take the missed dose and simply resume the usual dosing schedule. Inform the patient that he or she should not take more or less than the prescribed dose of INTELENCE<sup>®</sup> at any one time.

INTELENCE<sup>®</sup> may interact with many drugs; therefore, patients should be advised to report to their healthcare provider the use of any other prescription or nonprescription medication or herbal products, including St. John's wort.

Patients should be informed that severe and potentially life-threatening rash has been reported with INTELENCE<sup>®</sup>. Rash has been reported most commonly in the first 6 weeks of therapy. Patients should be advised to immediately contact their healthcare provider if they develop rash. Instruct patients to immediately stop taking INTELENCE<sup>®</sup> and seek medical attention if they develop a rash associated with any of the following symptoms as it may be a sign of a more serious reaction such as Stevens-Johnson syndrome, toxic epidermal necrolysis or severe hypersensitivity: fever, generally ill feeling, extreme tiredness, muscle or joint aches, blisters, oral lesions, eye inflammation, facial swelling, swelling of the eyes, lips, mouth, breathing difficulty, and/or signs and symptoms of liver problems (e.g., yellowing of your skin or whites of your eyes, dark or tea colored urine, pale colored stools/bowel movements, nausea, vomiting, loss of appetite, or pain, aching or sensitivity on your right side below

your ribs). Patients should understand that if severe rash occurs, they will be closely monitored, laboratory tests will be ordered and appropriate therapy will be initiated.

Patients should be informed that redistribution or accumulation of body fat may occur in patients receiving antiretroviral therapy, including INTELENCE<sup>®</sup>, and that the cause and long-term health effects of these conditions are not known at this time.

---



Manufactured for Tibotec, Inc. by:  
Janssen Cilag S.p.A., Latina, Italy

Distributed by:

Tibotec Therapeutics, Division of Centocor Ortho Biotech Products, L.P., Raritan NJ 08869

© Tibotec, Inc. 2008

**Patient Information**  
**INTELENCE<sup>®\*</sup>** (in-tel-ence)  
etravirine (et-ra-vir-een)  
Tablets

**Important: Ask your doctor or pharmacist about medicines that should NOT be taken with INTELENCE<sup>®</sup>.** For more information, read the section “Can INTELENCE<sup>®</sup> be taken with other medicines?”.

Read this information carefully before you start taking INTELENCE<sup>®</sup> and each time you renew your prescription, as new information may be available. This leaflet does not take the place of talking with your doctor. You and your doctor should discuss your treatment with INTELENCE<sup>®</sup> when you start taking it and at regular checkups. You should not change or stop treatment without first talking with your doctor.

**What is INTELENCE<sup>®</sup>?**

- **INTELENCE<sup>®</sup> is a prescription anti-HIV medicine that helps to control HIV (Human Immunodeficiency Virus) infection in adults. HIV is the virus that causes AIDS (Acquired Immune Deficiency Syndrome).** INTELENCE<sup>®</sup> is a type of anti-HIV medicine called a non-nucleoside reverse transcriptase inhibitor (NNRTI).
- INTELENCE<sup>®</sup> is used with other anti-HIV medicines in patients who are already taking or have taken NNRTI and other anti-HIV medicines and these medicines are not controlling their HIV infection.
- It is important that you remain under the care of your doctor during treatment with INTELENCE<sup>®</sup>.
- The safety and effectiveness of INTELENCE<sup>®</sup> have not been studied in children.

INTELENCE<sup>®</sup> must be taken in combination with other anti-HIV medicines.

**How does INTELENCE<sup>®</sup> work?**

- INTELENCE<sup>®</sup> blocks an enzyme which the virus (HIV) needs in order to make more virus. The enzyme that INTELENCE<sup>®</sup> blocks is called HIV reverse transcriptase.
- When used with other anti-HIV medicines, INTELENCE<sup>®</sup> can help:
  - reduce the amount of HIV in your blood. This is called your “viral load”.
  - increase the number of white blood cells called CD4+ (T) cells that help fight off other infections.

Reducing the amount of HIV and increasing the CD4+ (T) cell count may improve your immune system and, as a result, reduce the risk of death or infections that can happen when your immune system is weak (opportunistic infections).

---

\* Registered trademark of Tibotec Pharmaceuticals

**INTELENCE® does not cure HIV infection or AIDS.**

Patients must stay on continuous HIV therapy to control HIV infection and decrease HIV-related illnesses.

- Always practice safer sex.
- Use latex or polyurethane condoms to lower the chance of sexual contact with any body fluids such as semen, vaginal secretions, or blood.
- Never re-use or share needles.

Ask your doctor if you have any questions on how to prevent passing HIV to other people.

**What should I tell my doctor before I take INTELENCE®?**

Together with your doctor, you need to decide whether taking INTELENCE® is right for you.

**Tell your doctor about all of your medical conditions, including if you:**

- have had or currently have liver problems, including hepatitis B or C.
- are pregnant or planning to become pregnant. It is not known if INTELENCE® can harm your unborn baby. You and your doctor will need to decide if taking INTELENCE® is right for you. If you take INTELENCE® while you are pregnant, talk to your doctor about how you can be included in the Antiretroviral Pregnancy Registry.
- are breastfeeding. Do not breastfeed if you are taking INTELENCE®. You should not breastfeed if you have HIV because of the chance of passing HIV to your baby. Talk with your doctor about the best way to feed your baby.

**Can INTELENCE® be taken with other medicines?\***

Tell your doctor about all the medicines you take including prescription and nonprescription medicines, vitamins, and herbal supplements, including St. John's wort (*Hypericum perforatum*).

**Some medicines may interact with INTELENCE®.**

- Sometimes serious side effects happen if INTELENCE® is taken with some medicines.
- INTELENCE® should not be taken with some medicines which may lower the amount of INTELENCE® in your blood. This may lead to an increased HIV viral load. Resistance to INTELENCE® or cross resistance to other HIV medicines may develop.

**Know the medicines you take. Keep a list of your medicines and show it to your doctor and pharmacist when you get a new medicine.** Your doctor and your pharmacist can tell you if you can take these medicines with INTELENCE®. Do not start any new medicines while you are taking INTELENCE® without first talking with your doctor or pharmacist. You can ask your doctor or pharmacist for a list of medicines that can interact with INTELENCE®.

---

\*\* The brands listed are the registered trademarks of their respective owners and are not trademarks of Tibotec Pharmaceuticals

**Tell your doctor if you take other HIV medicines.** INTELENCE<sup>®</sup> can be combined with most HIV medicines while some HIV medicines are not recommended.

Tell your doctor if you are taking any of the following medicines:

<u>Type of Drug</u>	<u>Examples of Generic Names (Brand Names)</u>
Antiarrhythmics (to treat abnormal heart rhythms)	amiodarone (Cordarone <sup>®</sup> ) bepridil (Vascor <sup>®</sup> ) digoxin (Lanoxin <sup>®</sup> ) disopyramide (Norpace <sup>®</sup> ) flecainide (Tambocor <sup>™</sup> ) lidocaine (Xylocaine <sup>®</sup> ) mexiletine (Mexitil <sup>®</sup> ) propafenone (Rythmol SR <sup>®</sup> ) quinidine (Quinidex <sup>®</sup> )
Anticoagulants (to prevent blood clots)	warfarin (Coumadin <sup>®</sup> )
Anticonvulsants (to treat epilepsy and prevent seizures)	carbamazepine (Tegretol <sup>®</sup> , Carbatrol <sup>®</sup> ) phenobarbital (Luminal <sup>®</sup> ) phenytoin (Dilantin <sup>®</sup> , Phenytek <sup>®</sup> )
Antifungals (to treat fungal infections)	fluconazole (Diflucan <sup>®</sup> ) itraconazole (Sporanox <sup>®</sup> ) ketoconazole (Nizoral <sup>®</sup> ) posaconazole (Noxafil <sup>®</sup> ) voriconazole (Vfend <sup>®</sup> )
Anti-infectives (to treat bacterial infections)	clarithromycin (Biaxin <sup>®</sup> )
Antimycobacterials (to treat bacterial infections, including tuberculosis (TB))	rifabutin (Mycobutin <sup>®</sup> ) rifampin (Rifadin <sup>®</sup> , Rifater <sup>®</sup> , Rifamate <sup>®</sup> ) rifapentine (Priftin <sup>®</sup> )
Benzodiazepines (to treat trouble with sleeping and/or anxiety)	diazepam (Valium <sup>®</sup> )
Corticosteroids (to treat inflammation or asthma)	dexamethasone (Decadron <sup>®</sup> )
HMG-CoA Reductase Inhibitors (to lower cholesterol levels)	atorvastatin (Lipitor <sup>®</sup> ) fluvastatin (Lescol <sup>®</sup> ) lovastatin (Advicor <sup>®</sup> , Altoprev <sup>®</sup> , Mevacor <sup>®</sup> ) rosuvastatin (Crestor <sup>®</sup> )

<u>Type of Drug</u>	<u>Examples of Generic Names (Brand Names)</u>
Immunosuppressants (to prevent organ transplant rejection)	simvastatin (Vytorin <sup>®</sup> , Zocor <sup>®</sup> )  cyclosporine (Sandimmune <sup>®</sup> , Neoral <sup>®</sup> ) sirolimus (Rapamune <sup>®</sup> ) tacrolimus (Prograf <sup>®</sup> )
Narcotic Analgesic/Treatment of Opioid Dependence (to treat narcotic withdrawal and dependence)	buprenorphine (Buprenex <sup>®</sup> , Subutex <sup>®</sup> ) buprenorphine/naloxone (Suboxone <sup>®</sup> ) methadone (Dolophine <sup>®</sup> )
PDE-5 Inhibitors (to treat erectile dysfunction)	sildenafil (Viagra <sup>®</sup> ) vardenafil (Levitra <sup>®</sup> )
Platelet Aggregation Inhibitors (to prevent blood clots)	clopidogrel (Plavix <sup>®</sup> )

This is **not** a complete list of medicines that you should tell your doctor about. Know and keep track of all the medicines you take and have a list of them with you. Show this list to all of your doctors and pharmacists any time you get a new medicine. Both your doctor and your pharmacist can tell you if you can take these other medicines with INTELENCE<sup>®</sup>.

### **How should I take INTELENCE<sup>®</sup>?**

- **Take INTELENCE<sup>®</sup> tablets exactly as prescribed by your doctor.** The usual dose is 200 mg of INTELENCE<sup>®</sup> two times each day.
  - If you are taking INTELENCE<sup>®</sup> 100 mg tablets, you will take two tablets of INTELENCE<sup>®</sup> two times each day (a total of four tablets each day).
  - If you are taking INTELENCE<sup>®</sup> 200 mg tablets, you will take one tablet of INTELENCE<sup>®</sup> two times each day (a total of two tablets each day).

It may be easier to remember to take INTELENCE<sup>®</sup> if you take it at the same time every day. If you have questions about when to take INTELENCE<sup>®</sup>, your doctor can help you decide which schedule works for you.

- **Take INTELENCE<sup>®</sup> following a meal.** Do not take INTELENCE<sup>®</sup> on an empty stomach. INTELENCE<sup>®</sup> may not work as well if you take it on an empty stomach. The type of food is not important.
- Swallow INTELENCE<sup>®</sup> tablets whole, with a liquid such as water. **Do not chew the tablets.** If you are unable to swallow the INTELENCE<sup>®</sup> tablets whole, you may place the tablets in a glass of water. Stir well until the water looks milky, then drink it immediately. Rinse the glass with water several times, and completely swallow the rinse each time to make sure you take the entire dose.
- Do not change your dose or stop taking INTELENCE<sup>®</sup> without first talking with your doctor. See your doctor regularly while taking INTELENCE<sup>®</sup>.

- Take all your anti-HIV medicines as prescribed and at the right times of day. This can help your medicines work better and lowers the chance that your medicines will stop working to fight HIV (drug resistance).
- When your supply of INTELENCE<sup>®</sup> starts to run low, get more from your doctor or pharmacy. It is important not to run out of INTELENCE<sup>®</sup>. The amount of HIV in your blood may increase if the medicine is stopped even for a short time.
- If you miss a dose of INTELENCE<sup>®</sup> within 6 hours of the time you usually take it, take your dose of INTELENCE<sup>®</sup> following a meal as soon as possible. Then, take your next dose of INTELENCE<sup>®</sup> at the regularly scheduled time. If you miss a dose of INTELENCE<sup>®</sup> by more than 6 hours of the time you usually take it, wait and then take the next dose of INTELENCE<sup>®</sup> at the regularly scheduled time.
- Do not double the next dose to make up for a missed dose. Do not take more or less than your prescribed dose of INTELENCE<sup>®</sup> at any one time. Always take INTELENCE<sup>®</sup> following a meal.
- If you take too much INTELENCE<sup>®</sup>, contact your local poison control center or emergency room right away.

### **What are the possible side effects of INTELENCE®?**

INTELENCE can cause serious side effects, including:

- **Severe rash and allergic reactions.** Skin rash is a common side effect of INTELENCE. Rash can be serious. Call your doctor right away if you get a rash. Severe rash and allergic reaction may need to be treated in a hospital and may be potentially life-threatening.

If you get a rash with any of the following symptoms, stop using INTELENCE and call your doctor or get medical help right away:

- Hives or sores in your mouth, or your skin blisters and peels
- Trouble swallowing or breathing
- Swelling of your face, eyes, lips, tongue, or throat
- Fever, yellowing of the skin or whites of the eyes, dark urine, or pain on the right side of the stomach-area (abdominal pain).

Other side effects of INTELENCE®, which can be serious, include muscle pain, tenderness or weakness.

As with other anti-HIV medicines, INTELENCE® may cause side effects, including:

- **Changes in body shape or body fat.** These changes can happen in patients taking anti-HIV medicine. The changes may include an increased amount of fat in the upper back and neck, breast, and around the back, chest, and stomach area. Loss of fat from the legs, arms, and face may also happen. The exact cause and long term health effects of these conditions are not known.
- **Changes in your immune system.** A condition called Immune Reconstitution Syndrome can happen in some patients with advanced HIV infection (AIDS) when HIV treatment is started. Signs and symptoms of inflammation from opportunistic infections that a person has or had may occur as the medicines work to control the HIV infection and strengthen the immune system. Call your doctor right away if you notice any signs or symptoms of an infection after starting INTELENCE® with other anti-HIV medicines.

Common side effects of INTELENCE® include tingling, numbness, or pain in the hands or feet.

Tell your doctor right away about these or any other unusual symptoms. If the condition does not go away or worsens, get medical help.

These are not all of the possible side effects with INTELENCE®. For more information, ask your doctor or pharmacist.

### **How should I store INTELENCE® tablets?**

- Store INTELENCE® tablets at room temperature between 59°F to 86°F (15°C to 30°C).
- Keep INTELENCE® in the bottle given to you by your pharmacist.

Keep the bottle tightly closed to protect INTELENCE® from moisture. The bottle contains 3 little pouches of drying agent (desiccants) to keep the tablets dry. Keep the pouches in the

bottle. **Do not eat the pouches. Keep INTELENCE<sup>®</sup> and all medicines out of the reach of children.**

### **General Advice about INTELENCE<sup>®</sup>**

Medicines are sometimes prescribed for purposes other than those listed in a Patient Information leaflet. Do not use INTELENCE<sup>®</sup> for a condition for which it was not prescribed. Do not give INTELENCE<sup>®</sup> to other people even if they have the same condition you have. It may harm them.

This leaflet provides a summary of the most important information about INTELENCE<sup>®</sup>. If you would like more information, talk with your doctor. You can ask your doctor or pharmacist for information about INTELENCE<sup>®</sup> that is written for health professionals. For more information, you may also call Tibotec Therapeutics at 1-877-REACH-TT or 1-877-732-2488.

### **What are the ingredients in INTELENCE<sup>®</sup>?**

#### INTELENCE<sup>®</sup> 100 mg tablets

Active ingredient: Each tablet contains 100 mg of etravirine.

Inactive ingredients: hypromellose, microcrystalline cellulose, colloidal silicon dioxide, croscarmellose sodium, magnesium stearate and lactose monohydrate

#### INTELENCE<sup>®</sup> 200 mg tablets

Active ingredient: Each tablet contains 200 mg of etravirine.

Inactive ingredients: hypromellose, silicified microcrystalline cellulose, microcrystalline cellulose, colloidal silicon dioxide, croscarmellose sodium and magnesium stearate.



Manufactured for Tibotec, Inc. by:

Janssen Cilag S.p.A., Latina, IT

Distributed by:

Tibotec Therapeutics, Division of Centocor Ortho Biotech Products, L.P., Raritan NJ 08869

© Tibotec, Inc. 2008

Issued October 2011