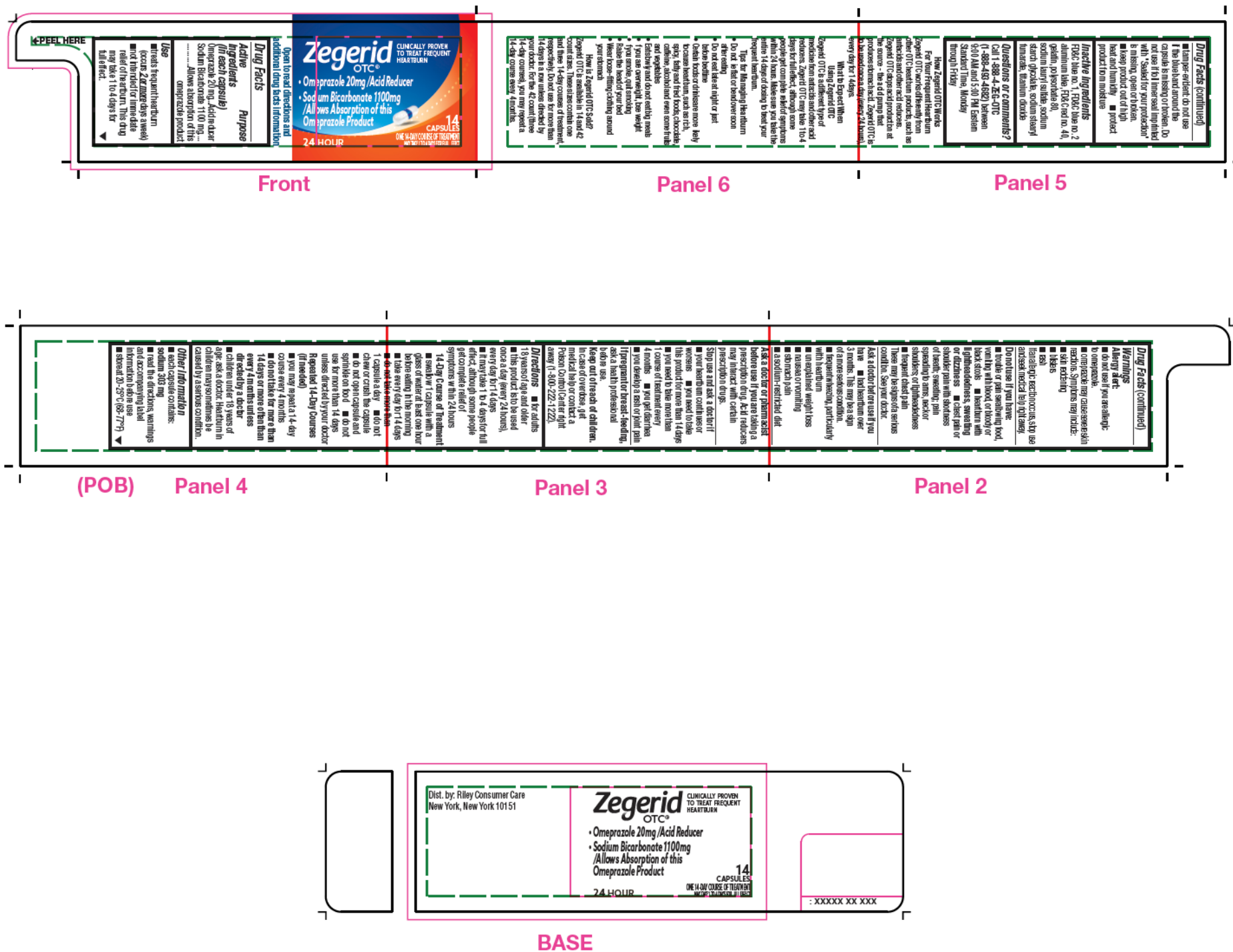


14 Count Label



DRUG FACTS INFO	
CATEGORY	TYPE SIZE
Drug Facts Title	8 pt
Drug Facts Continued	7 pt
Headings	7 pt
Subheadings	6 pt
Body Text	6 pt
Bullets	5 pt
Hairlines	0.5 pt rule
Box	1.5 pt rule



DRUG FACTS INFO	
CATEGORY	TYPE SIZE
Drug Facts Title	9 pt
Drug Facts Continued	8 pt
Headings	8 pt
Subheadings	6 pt
Body Text	6 pt
Bullets	3.5 pt
Hairlines	0.5 pt rule
Box	1 pt rule

CLINICALLY PROVEN TO TREAT FREQUENT HEARTBURN

Zegerid OTC

28 CAPSULES

CLINICALLY PROVEN TO TREAT FREQUENT HEARTBURN

Zegerid OTC

24 HOUR

28 CAPSULES

TWO 14-DAY COURSES OF TREATMENT
MAY TAKE 1 TO 4 DAYS FOR FULL EFFECT

HOW ZEGERID OTC WORKS FOR YOUR FREQUENT HEARTBURN

Zegerid OTC works differently from other OTC heartburn products, such as antacids and other acid reducers. Zegerid OTC stops acid production at the source - the acid pump that produces stomach acid. Zegerid OTC is to be used once a day every 24 hours, every day for 14 days.

TIPS FOR MANAGING HEARTBURN

- Do not lie flat or bend over soon after eating
- Do not eat late at night or just before bedtime
- Certain foods or drinks are more likely to cause heartburn, such as rich, spicy, fatty and fried foods, chocolate, caffeine, alcohol and even some fruits and vegetables
- Eat slowly and do not eat big meals
- If you are overweight, lose weight
- If you smoke, quit smoking
- Raise the head of your bed
- Wear loose-fitting clothing around your stomach

Drug Facts

Active ingredients (in each capsule)

Omeprazole 20 mg Acid reducer
Sodium Bicarbonate 1100 mg Allows absorption of this omeprazole product

Purpose

Acid reducer

Use

- treats frequent heartburn (occurs 2 or more days a week)
- not intended for immediate relief of heartburn. This drug may take 1 to 4 days for full effect.

Warnings

Allergy alert:

- do not use if you are allergic to omeprazole.
- omeprazole may cause severe skin reactions. Symptoms may include:
 - skin reddening
 - blisters
 - itch

If an allergic reaction occurs, stop use and seek medical help right away.

Do not use if you have:

- trouble or pain swallowing food, vomiting with blood, or bloody or black stools
- heartburn with lightheadedness, sweating or dizziness
- chest pain or shoulder pain with shortness of breath; sweating; pain spreading to arms, neck or shoulders; or lightheadedness
- frequent chest pain

These may be signs of a serious condition. See your doctor.

Ask a doctor before use if you have

- had heartburn over 3 months. This may be a sign of a more serious condition.
- frequent wheezing, particularly with heartburn

Drug Facts (continued)

- unexplained weight loss
- nausea or vomiting
- stomach pain
- sodium-restricted diet

Ask a doctor or pharmacist before use if you are taking a prescription drug. Acid reducers may interact with certain prescription drugs.

Stop use and ask a doctor if

- your heartburn continues or worsens
- you need to take this product for more than 14 days
- you need to take more than 1 course of treatment every 4 months
- you get diarrhea
- you develop a rash or joint pain

If pregnant or breast-feeding, ask a health professional before use. Keep out of reach of children. In case of overdose, get medical help or contact a Poison Control Center right away (1-800-222-1222).

Directions

- for adults 18 years of age and older
- this product is to be used once a day (every 24 hours), every day for 14 days
- it may take 1 to 4 days for full effect, although some people get complete relief of symptoms within 24 hours

14-Day Course of Treatment

- swallow 1 capsule with a glass of water at least 1 hour before eating in the morning
- take every day for 14 days
- do not take more than 1 capsule a day
- do not chew or crush the capsule
- do not open capsule and sprinkle on food
- do not use for more than 14 days unless directed by your doctor

Drug Facts (continued)

Repeated 14-Day Courses (if needed)

- you may repeat a 14-day course every 4 months
- do not take for more than 14 days or more often than every 4 months unless directed by a doctor
- children under 18 years of age: ask a doctor.

Heartburn in children may sometimes be caused by a serious condition.

Other information

- each capsule contains: sodium 303 mg
- read the directions, warnings and accompanying label information before use
- store at 20°-25°C (68°-77°F)
- tamper-evident: do not use if the blue band around the capsule is missing or broken. Do not use if foil inner seal imprinted with "Sealed for your protection" is missing, open or broken.
- keep product out of high heat and humidity
- protect product from moisture

Inactive ingredients

FD&C blue no. 1, FD&C blue no. 2 aluminum lake, FD&C red no. 40, gelatin, polyorbate 80, sodium lauryl sulfate, sodium starch glycolate, sodium stearyl fumarate, titanium dioxide

Questions or comments?

Call 1-888-4-ZEGERID (1-888-483-4882) between 9:00 AM and 5:00 PM Eastern Standard Time, Monday through Friday

Dist. by: Riley Consumer Care
New York, New York 10151

recyclable carton

XXXXXX XX XXX

DRUG FACTS INFO	
CATEGORY	TYPE SIZE
Drug Facts Title	9 pt
Drug Facts Continued	8 pt
Headings	8 pt
Subheadings	6 pt
Body Text	6 pt
Bullets	3.5 pt
Hairlines	0.5 pt rule
Box	1 pt rule

CLINICALLY PROVEN TO TREAT FREQUENT HEARTBURN
Zegerid
OTC
42 CAPSULES

CLINICALLY PROVEN TO TREAT FREQUENT HEARTBURN
Zegerid
OTC
• Omeprazole 20mg/Acid Reducer
• Sodium Bicarbonate 1100mg/Allows Absorption of this Omeprazole Product
24 HOUR
42 CAPSULES
THREE 14-DAY COURSES OF TREATMENT
MAY TAKE 1 TO 4 DAYS FOR FULL EFFECT

HOW ZEGERID OTC WORKS FOR YOUR FREQUENT HEARTBURN
Zegerid OTC works differently from other OTC heartburn products, such as antacids and other acid reducers. Zegerid OTC stops acid production at the source - the acid pump that produces stomach acid. Zegerid OTC is to be used once a day every 24 hours, every day for 14 days.

TIPS FOR MANAGING HEARTBURN

- Do not lie flat or bend over soon after eating
- Do not eat late at night or just before bedtime
- Certain foods or drinks are more likely to cause heartburn, such as rich, spicy, fatty and fried foods, chocolate, caffeine, alcohol and even some fruits and vegetables
- Eat slowly and do not eat big meals
- If you are overweight, lose weight
- If you smoke, quit smoking
- Raise the head of your bed
- Wear loose-fitting clothing around your stomach

Drug Facts
Active ingredients (in each capsule)
Omeprazole 20 mg Acid reducer
Sodium Bicarbonate 1100 mg
Allows absorption of this omeprazole product

Purpose
Acid reducer

Use
• treats frequent heartburn (occurs 2 or more days a week)
• not intended for immediate relief of heartburn. This drug may take 1 to 4 days for full effect.

Warnings
Allergy alert:
• do not use if you are allergic to omeprazole.
• omeprazole may cause severe skin reactions. Symptoms may include:
• skin reddening
• blisters
• rash
If an allergic reaction occurs, stop use and seek medical help right away.

Do not use if you have:
• trouble or pain swallowing food, vomiting with blood, or bloody or black stools
• heartburn with lightheadedness, sweating or dizziness
• chest pain or shoulder pain with shortness of breath; sweating; pain spreading to arms, neck or shoulders; or lightheadedness
• frequent chest pain
These may be signs of a serious condition. See your doctor.

Ask a doctor before use if you have
• had heartburn over 3 months. This may be a sign of a more serious condition.
• frequent wheezing, particularly with heartburn

Drug Facts (continued)
• unexplained weight loss
• nausea or vomiting
• stomach pain
• a sodium-restricted diet
Ask a doctor or pharmacist before use if you are taking a prescription drug. Acid reducers may interact with certain prescription drugs.
Stop use and ask a doctor if
• your heartburn continues or worsens
• you need to take this product for more than 14 days
• you need to take more than 1 course of treatment every 4 months
• you get diarrhea
• you develop a rash or joint pain
If pregnant or breast-feeding, ask a health professional before use. Keep out of reach of children. In case of overdose, get medical help or contact a Poison Control Center right away (1-800-222-1222).

Directions
• for adults 18 years of age and older
• this product is to be used once a day (every 24 hours), every day for 14 days
• it may take 1 to 4 days for full effect, although some people get complete relief of symptoms within 24 hours
14-Day Course of Treatment
• swallow 1 capsule with a glass of water at least 1 hour before eating in the morning
• take every day for 14 days
• do not take more than 1 capsule a day
• do not chew or crush the capsule
• do not open capsule and sprinkle on food
• do not use for more than 14 days unless directed by your doctor

Drug Facts (continued)
Repeated 14-Day Courses (if needed)
• you may repeat a 14-day course every 4 months
• do not take for more than 14 days or more often than every 4 months unless directed by a doctor
• children under 18 years of age: ask a doctor.
Heartburn in children may sometimes be caused by a serious condition.
Other information
• each capsule contains: sodium 303 mg
• read the directions, warnings and accompanying label information before use
• store at 20°-25°C (68°-77°F)
• tamper-evident: do not use if the blue band around the capsule is missing or broken. Do not use if foil inner seal imprinted with "Sealed for your protection" is missing, open or broken.
• keep product out of high heat and humidity
• protect product from moisture
Inactive ingredients
FD&C blue no. 1, FD&C blue no. 2 aluminum lake, FD&C red no. 40, gelatin, polyorbate 80, sodium lauryl sulfate, sodium starch glycolate, sodium stearyl fumarate, titanium dioxide
Questions or comments?
Call 1-888-4-ZEGERID (1-888-483-4882) between 9:00 AM and 5:00 PM Eastern Standard Time, Monday through Friday
Dist. by: Riley Consumer Care
New York, New York 10151

FPO UPC
0 00000 00000 0

DRUG FACTS INFO	
CATEGORY	TYPE SIZE
Drug Facts Title	9 pt
Drug Facts Continued	8 pt
Headings	8 pt
Subheadings	6 pt
Body Text	6 pt
Bullets	3.5 pt
Hairlines	0.5 pt rule
Box	1 pt rule

This is a representation of an electronic record that was signed electronically. Following this are manifestations of any and all electronic signatures for this electronic record.

/s/

NUSHIN F TODD
11/01/2022 01:45:33 PM