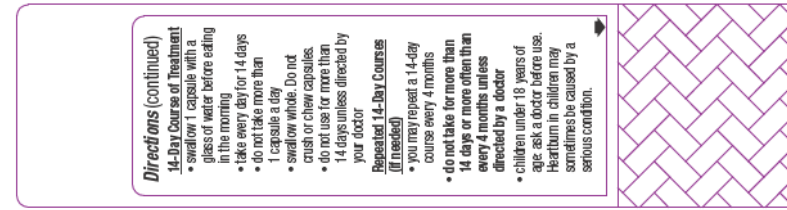




FRONT OF TOP PLY



BACK OF TOP PLY



FRONT OF BASE PLY

FOR FDA REVIEW ONLY

46465788
FPO

Drug Facts (continued)

Other information

- read the directions, warnings and package insert before use
- keep the carton and package insert.
- They contain important information.
- store at 20-25°C (68-77°F)
- keep product out of high heat and humidity
- protect product from moisture
- close cap tightly after use

Inactive ingredients colloidal silicon dioxide, D&C red No. 28, FD&C blue No. 1, FD&C green No. 3, FD&C red No. 40, gelatin, hydroxypropyl cellulose, low substituted methacrylic acid and ethyl acrylate copolymer, polyethylene glycol, polysorbate 80, starch, sucrose, sugar sphere, talc, titanium dioxide

Questions or comments?
1-800-452-0061

KEEP THE CARTON AND PACKAGE INSERT. THEY CONTAIN IMPORTANT INFORMATION.

TAMPER-EVIDENT BOTTLE. DO NOT USE IF INNER FOIL SEAL IMPRINTED WITH "SEALED FOR YOUR PROTECTION" OR BLACK BAND AROUND THE CENTER OF EACH CAPSULE IS MISSING OR BROKEN.

Treats Frequent Heartburn

NDC 0067-6286-14

gsk

PREVACID[®]

24HR

Lansoprazole delayed-release capsules 15 mg / acid reducer

- May take 1 to 4 days for full effect
- Sodium Free

14

CAPSULES

ONE 14-DAY COURSE OF TREATMENT

46465788
FPO

1 BOTTLE INSIDE
14 CAPSULES TOTAL



gsk

PREVACID[®]

24HR

Actual Size

Lansoprazole delayed-release capsules 15 mg / acid reducer

ONE 14-DAY COURSE OF TREATMENT

1-800-452-0061

FPO

©2016 GSK group of companies or its licensors. All rights reserved. PREVACID[®] is a registered trademark of Takeda Pharmaceutical Company, North America, Inc., and is used under license.

Distributed by GSK Consumer Health Division, Warren, NJ 07059
Trade marks are owned by or licensed to the GSK group of companies.
©2016 GSK group of companies or its licensors. All rights reserved.

Drug Facts	Purpose	Drug Facts (continued)
<p>Active ingredient (in each capsule) Lansoprazole 15 mg</p> <p>Use</p> <ul style="list-style-type: none"> • treats frequent heartburn (occurs 2 or more days a week) • not intended for immediate relief of heartburn; this drug may take 1 to 4 days for full effect <p>Warnings</p> <p>Allergy alert: Do not use if you are allergic to lansoprazole</p> <p>Do not use</p> <ul style="list-style-type: none"> • if you have trouble or pain swallowing food, vomiting with blood, or bloody or black stools. These may be signs of a serious condition. See your doctor. <p>Ask a doctor before use if you have</p> <ul style="list-style-type: none"> • liver disease • had heartburn over 3 months. This may be a sign of a more serious condition. • heartburn with lightheadedness, sweating or dizziness • chest pain or shoulder pain with shortness of breath; sweating; pain spreading to arms, neck or shoulders; or lightheadedness • frequent chest pain • frequent wheezing, particularly with heartburn • unexplained weight loss • nausea or vomiting • stomach pain <p>Ask a doctor or pharmacist before use if you are taking</p> <ul style="list-style-type: none"> • warfarin (blood-thinning medicine) • prescription antifungal or anti-yeast medicines • digoxin (heart medicine) • theophylline (asthma medicine) • tacrolimus or mycophenolate mofetil (immune system medicines) 	<p>Acid Reducer</p>	<ul style="list-style-type: none"> • alazanavir (medicine for HIV infection) • methotrexate (arthritis medication) <p>Stop use and ask a doctor if</p> <ul style="list-style-type: none"> • your heartburn continues or worsens • you need to take this product for more than 14 days • you need to take more than 1 course of treatment every 4 months • you get diarrhea <p>If pregnant or breast-feeding, ask a health care professional before use. Keep out of reach of children. In case of overdose, get medical help or contact a Poison Control Center right away.</p> <p>Directions</p> <ul style="list-style-type: none"> • adults 18 years of age and older • this product is to be used once a day (every 24 hours), every day for 14 days • it may take 1 to 4 days for full effect, although some people get complete relief of symptoms within 24 hours <p>14-Day Course of Treatment</p> <ul style="list-style-type: none"> • swallow 1 capsule with a glass of water before eating in the morning • take every day for 14 days • do not take more than 1 capsule a day • swallow whole. Do not crush or chew capsules. • do not use for more than 14 days unless directed by your doctor <p>Repeated 14-Day Courses (if needed)</p> <ul style="list-style-type: none"> • you may repeat a 14-day course every 4 months • do not take for more than 14 days or more often than every 4 months unless directed by a doctor <ul style="list-style-type: none"> • children under 18 years of age: ask a doctor before use. Heartburn in children may sometimes be caused by a serious condition.

FOR FDA REVIEW ONLY

Drug Facts (continued)

Other information

- read the directions, warnings and package insert before use
- keep the carton and package insert. They contain important information.
- store at 20-25°C (68-77°F)
- keep product out of high heat and humidity
- protect product from moisture
- close cap tightly after use

Inactive ingredients colloidal silicon dioxide, D&C red No. 28, FD&C blue No. 1, FD&C green No. 3, FD&C red No. 40, gelatin, hydroxypropyl cellulose, low substituted hydroxypropyl cellulose, magnesium carbonate, methacrylic acid and ethyl acrylate copolymer, polyethylene glycol, polyacrylate 80, starch, sucrose, sugar sphere, talc, titanium dioxide

Questions or comments?
1-800-432-0051

KEEP THE CARTON AND PACKAGE INSERT. THEY CONTAIN IMPORTANT INFORMATION.

TAMPER-EVIDENT BOTTLE. DO NOT USE IF INNER FOIL SEAL IMPRINTED WITH "SEALED FOR YOUR PROTECTION" OR BLACK BAND AROUND THE CENTER OF EACH CAPSULE IS MISSING OR BROKEN.

Treats Frequent Heartburn

NDC 0067-0286-14

gsk

24HR PREVACID

Lansoprazole delayed-release capsules 15 mg / acid reducer

- May take 1 to 4 days for full effect
- Sodium Free

14 CAPSULES
ONE 14-DAY COURSE OF TREATMENT

SAVE ON YOUR NEXT PURCHASE!
LOOK FOR YOUR COUPON INSIDE.

1 BOTTLE INSIDE
14 CAPSULES TOTAL

24HR PREVACID
Lansoprazole delayed-release capsules 15 mg / acid reducer
Actual Size
ONE 14-DAY COURSE OF TREATMENT

PREVACID 24HR

1 BOTTLE INSIDE

14 CAPSULES TOTAL

ONE 14-DAY COURSE OF TREATMENT

FP0

4445789

FP0

3 0067-0286-14 3

1-800-432-0051

Distributed by GSK Consumer Healthcare & Women, NJ 07093

Lansoprazole delayed-release capsules 15 mg / acid reducer is a registered trademark of Helsinn Pharmaceuticals, Inc. © 2015. All rights reserved.

PREVACID 24HR is a registered trademark of Helsinn Pharmaceuticals, Inc. © 2015. All rights reserved.

Lansoprazole delayed-release capsules 15 mg / acid reducer is a registered trademark of Helsinn Pharmaceuticals, Inc. © 2015. All rights reserved.

FOR FDA REVIEW ONLY

MANUFACTURER'S COUPON | EXPIRES 12/31/15

SAVE \$1.50 on any one (1) PREVACID 24HR

030067-104272

030067-104272

4445789

FP0

FP0

3 0067-0286-14 3

1-800-432-0051

Distributed by GSK Consumer Healthcare & Women, NJ 07093

Lansoprazole delayed-release capsules 15 mg / acid reducer is a registered trademark of Helsinn Pharmaceuticals, Inc. © 2015. All rights reserved.

PREVACID 24HR is a registered trademark of Helsinn Pharmaceuticals, Inc. © 2015. All rights reserved.

Lansoprazole delayed-release capsules 15 mg / acid reducer is a registered trademark of Helsinn Pharmaceuticals, Inc. © 2015. All rights reserved.

Drug Facts (continued)

Other information

- read the directions, warnings and package insert before use
- keep the carton and package insert.
- store at 20-25°C (68-77°F)
- keep product out of high heat and humidity
- protect product from moisture
- close cap tightly after use

Inactive ingredients colloidal silicon dioxide, D&C red No. 28, FD&C blue No. 1, FD&C green No. 3, FD&C red No. 40, gelatin, hydroxypropyl cellulose, low substituted methacrylic acid and ethyl acrylate copolymer, polyethylene glycol, polysorbate 80, starch, sucrose, sugar sphere, talc, titanium dioxide

Questions or comments?
1-800-452-0061

KEEP THE CARTON AND PACKAGE INSERT. THEY CONTAIN IMPORTANT INFORMATION.

TAMPER-EVIDENT BOTTLE. DO NOT USE IF INNER FOIL SEAL IMPRINTED WITH "SEALED FOR YOUR PROTECTION" OR BLACK BAND AROUND THE CENTER OF EACH CAPSULE IS MISSING OR BROKEN.

Treats Frequent Heartburn

NDC 0067-6286-28

PREVACID[®] 24HR

Lansoprazole delayed-release capsules 15 mg / acid reducer

- May take 1 to 4 days for full effect
- Sodium Free

28 CAPSULES
TWO 14-DAY COURSES OF TREATMENT

2 BOTTLES INSIDE

28 CAPSULES TOTAL

PREVACID[®] 24HR
Lansoprazole delayed-release capsules 15 mg / acid reducer
Actual Size

ONE 14-DAY COURSE OF TREATMENT

PREVACID[®] 24HR

28 CAPSULES
TWO 14-DAY COURSES OF TREATMENT

Drug Facts

Active ingredient (in each capsule)	Purpose
Lansoprazole 15 mg	Acid Reducer

Use

- treats frequent heartburn (occurs 2 or more days a week)
- not intended for immediate relief of heartburn; this drug may take 1 to 4 days for full effect

Warnings

Allergy alert: Do not use if you are allergic to lansoprazole

Do not use

- if you have trouble or pain swallowing food, vomiting with blood, or bloody or black stools. These may be signs of a serious condition. See your doctor.

Ask a doctor before use if you have

- liver disease
- had heartburn over 3 months. This may be a sign of a more serious condition.
- heartburn with lightheadedness, sweating or dizziness
- chest pain or shoulder pain with shortness of breath; sweating; pain spreading to arms, neck or shoulders; or lightheadedness
- frequent chest pain
- frequent wheezing, particularly with heartburn
- unexplained weight loss • nausea or vomiting • stomach pain

Ask a doctor or pharmacist before use if you are taking

- warfarin (blood-thinning medicine)
- prescription antifungal or anti-yeast medicines
- digoxin (heart medicine)
- theophylline (asthma medicine)
- tacrolimus or mycophenolate mofetil (immune system medicines)

Drug Facts (continued)

- atazanavir (medicine for HIV infection) • methotrexate (arthritis medication)

Stop use and ask a doctor if

- your heartburn continues or worsens
- you need to take this product for more than 14 days
- you need to take more than 1 course of treatment every 4 months
- you get diarrhea

If pregnant or breast-feeding, ask a health care professional before use. Keep out of reach of children. In case of overdose, get medical help or contact a Poison Control Center right away.

Directions

- adults 18 years of age and older
- this product is to be used once a day (every 24 hours), every day for 14 days
- it may take 1 to 4 days for full effect, although some people get complete relief of symptoms within 24 hours

14-Day Course of Treatment

- swallow 1 capsule with a glass of water before eating in the morning
- take every day for 14 days
- do not take more than 1 capsule a day
- swallow whole. Do not crush or chew capsules.
- do not use for more than 14 days unless directed by your doctor

Repeated 14-Day Courses (if needed)

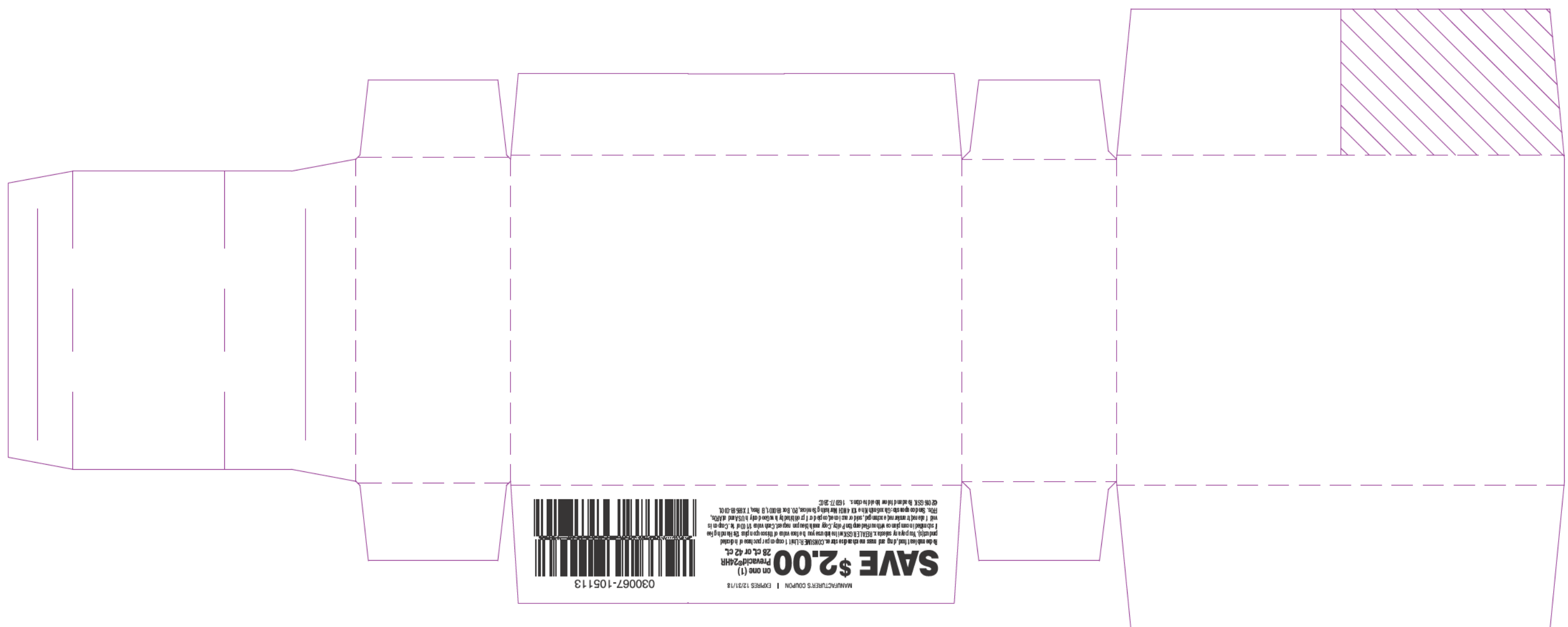
- you may repeat a 14-day course every 4 months
- do not take for more than 14 days or more often than every 4 months unless directed by a doctor

• children under 18 years of age: ask a doctor before use. Heartburn in children may sometimes be caused by a serious condition.

FOR FDA REVIEW ONLY



FOR FDA REVIEW ONLY



PREVACID[®] 24HR

Lansoprazole delayed-release capsules 15 mg / acid reducer

CAPSULES
THREE 14-DAY COURSES
OF TREATMENT

42 CAPSULES INSIDE

Treats Frequent Heartburn

PREVACID[®] 24HR

Lansoprazole delayed-release capsules 15 mg / acid reducer

42 CAPSULES
THREE 14-DAY COURSES OF TREATMENT

3 BOTTLES INSIDE

42 CAPSULES TOTAL

PREVACID[®] 24HR

Lansoprazole delayed-release capsules 15 mg / acid reducer

Actual Size

ONE 14-DAY COURSE OF TREATMENT

Drug Facts

Active ingredient (in each capsule) Lansoprazole 15 mg

Purpose Acid Reducer

Use

- treats frequent heartburn (occurs 2 or more days a week)
- not intended for immediate relief of heartburn; this drug may take 1 to 4 days for full effect

Warnings

Allergy alert: Do not use if you are allergic to lansoprazole

Do not use

- if you have trouble or pain swallowing food, vomiting with blood, or bloody or black stools. These may be signs of a serious condition. See your doctor.

Ask a doctor before use if you have

- liver disease
- had heartburn over 3 months. This may be a sign of a more serious condition.
- heartburn with lightheadedness, sweating or dizziness
- chest pain or shoulder pain with shortness of breath; sweating; pain spreading to arms, neck or shoulders; or lightheadedness
- frequent chest pain
- frequent wheezing, particularly with heartburn
- unexplained weight loss
- nausea or vomiting
- stomach pain

Ask a doctor or pharmacist before use if you are taking

- warfarin (blood-thinning medicine)
- prescription antifungal or anti-yeast medicines
- dipoxin (heart medicine)
- theophylline (asthma medicine)
- tacrolimus or mycophenolate mofetil (immune system medicines)

Drug Facts (continued)

Other information

- read the directions, warnings and package insert before use
- your heartburn continues or worsens
- you need to take this product for more than 14 days
- you need to take more than 1 course of treatment every 4 months
- you get diarrhea

Inactive ingredients colloidal silicon dioxide, D&C red No. 28, FD&C blue No. 1, FD&C green No. 3, FD&C red No. 40, gelatin, hydroxypropyl cellulose, low substituted methacrylic acid and ethyl acrylate copolymer, polyethylene glycol, polysorbate 80, starch, sucrose, sugar sphere, talc, titanium dioxide

Questions or comments?
1-800-452-0051

Drug Facts (continued)

Other information

- read the directions, warnings and package insert before use
- keep the carton and package insert. They contain important information.
- store at 20-25°C (68-77°F)
- keep product out of high heat and humidity
- protect product from moisture
- close cap tightly after use

Directions

adults 18 years of age and older

this product is to be used once a day (every 24 hours), every day for 14 days

it may take 1 to 4 days for full effect, although some people get complete relief of symptoms within 24 hours

14-Day Course of Treatment

- swallow 1 capsule with a glass of water before eating in the morning
- take every day for 14 days
- do not take more than 1 capsule a day
- swallow whole. Do not crush or chew capsules.
- do not use for more than 14 days unless directed by your doctor

Repeated 14-Day Courses (if needed)

- you may repeat a 14-day course every 4 months
- do not take for more than 14 days or more often than every 4 months unless directed by a doctor
- children under 18 years of age: ask a doctor before use. Heartburn in children may sometimes be caused by a serious condition.

KEEP THE CARTON AND PACKAGE INSERT. THEY CONTAIN IMPORTANT INFORMATION.

TAMPER-EVIDENT BOTTLE.

DO NOT USE IF INNER FOIL SEAL IMPRINTED WITH "SEALED FOR YOUR PROTECTION" OR BLACK BAND AROUND THE CENTER OF EACH CAPSULE IS MISSING OR BROKEN.


1-800-452-0051

3 0067-6286-42 6

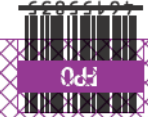
FP0

1-800-452-0051


FOR FDA REVIEW ONLY



3 BOTTLES INSIDE
 CAPSULES
 42



043



3 BOTTLES INSIDE
 42 CAPSULES TOTAL

Drug Facts

Active ingredient (in each capsule) Purpose
 Lansoprazole 15 mg Acid Reducer

Use
 • treats frequent heartburn (occurs 2 or more days a week)
 • not intended for immediate relief of heartburn; this drug may take 1 to 4 days for full effect

Warnings
Allergy alert: Do not use if you are allergic to lansoprazole

Do not use
 • if you have trouble or pain swallowing food, vomiting with blood, or bloody or black stools. These may be signs of a serious condition. See your doctor.

Ask a doctor before use if you have
 • liver disease
 • had heartburn over 3 months. This may be a sign of a more serious condition.
 • heartburn with lightheadedness, sweating or dizziness
 • chest pain or shoulder pain with shortness of breath; sweating; pain spreading to arms, neck or shoulders; or lightheadedness
 • frequent chest pain
 • frequent wheezing, particularly with heartburn
 • unexplained weight loss • nausea or vomiting • stomach pain

Ask a doctor or pharmacist before use if you are taking
 • warfarin (blood-thinning medicine)
 • prescription antifungal or anti-yeast medicines
 • digoxin (heart medicine)
 • theophylline (asthma medicine)
 • tacrolimus or mycophenolate mofetil (immune system medicines)

Drug Facts (continued)
 • atazanavir (medicine for HIV infection) • methotrexate (arthritis medication)

Stop use and ask a doctor if
 • your heartburn continues or worsens
 • you need to take this product for more than 14 days
 • you need to take more than 1 course of treatment every 4 months
 • you get diarrhea

If pregnant or breast-feeding, ask a health care professional before use. Keep out of reach of children. In case of overdose, get medical help or contact a Poison Control Center right away.

Directions
 • adults 18 years of age and older
 • this product is to be used once a day (every 24 hours), every day for 14 days
 • it may take 1 to 4 days for full effect, although some people get complete relief of symptoms within 24 hours

14-Day Course of Treatment
 • swallow 1 capsule with a glass of water before eating in the morning
 • take every day for 14 days
 • do not take more than 1 capsule a day
 • swallow whole. Do not crush or chew capsules.
 • do not use for more than 14 days unless directed by your doctor

Repeated 14-Day Courses (if needed)
 • you may repeat a 14-day course every 4 months
 • do not take for more than 14 days or more often than every 4 months unless directed by a doctor
 • children under 18 years of age: ask a doctor before use. Heartburn in children may sometimes be caused by a serious condition.

Drug Facts (continued)

Other information
 • read the directions, warnings and package insert before use
 • your heartburn continues or worsens
 • keep the carton and package insert.
 They contain important information.
 • store at 20-25°C (68-77°F)
 • keep product out of high heat and humidity
 • protect product from moisture


Inactive ingredients colloidal silicon dioxide, D&C red No. 28, FD&C blue No. 1, FD&C green No. 3, FD&C red No. 40, gelatin, hydroxypropyl cellulose, low substituted hydroxypropyl cellulose, magnesium carbonate, methacrylic acid and ethyl acrylate copolymer, polyethylene glycol, polysorbate 80, starch, sucrose, sugar spheres, talc, titanium dioxide

Questions or comments?
 1-800-452-0051

KEEP THE CARTON AND PACKAGE INSERT. THEY CONTAIN IMPORTANT INFORMATION.

TAMPER-EVIDENT BOTTLE. DO NOT USE IF INNER FOIL SEAL IMPRINTED WITH "SEALED FOR YOUR PROTECTION" OR BLACK BAND AROUND THE CENTER OF EACH CAPSULE IS MISSING OR BROKEN.


Treats Frequent Heartburn

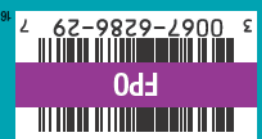
NDC 0067-6286-29 

PREVACID[®] 24HR

Lansoprazole delayed-release capsules 15 mg/acid reducer

- May take 1 to 4 days for full effect
- Sodium Free


42  **28**
 CAPSULES
BONUS 14 FREE Capsules!
 THREE 14-DAY COURSES OF TREATMENT (42 capsules for the price of 28)



62-9829-29
 FPO

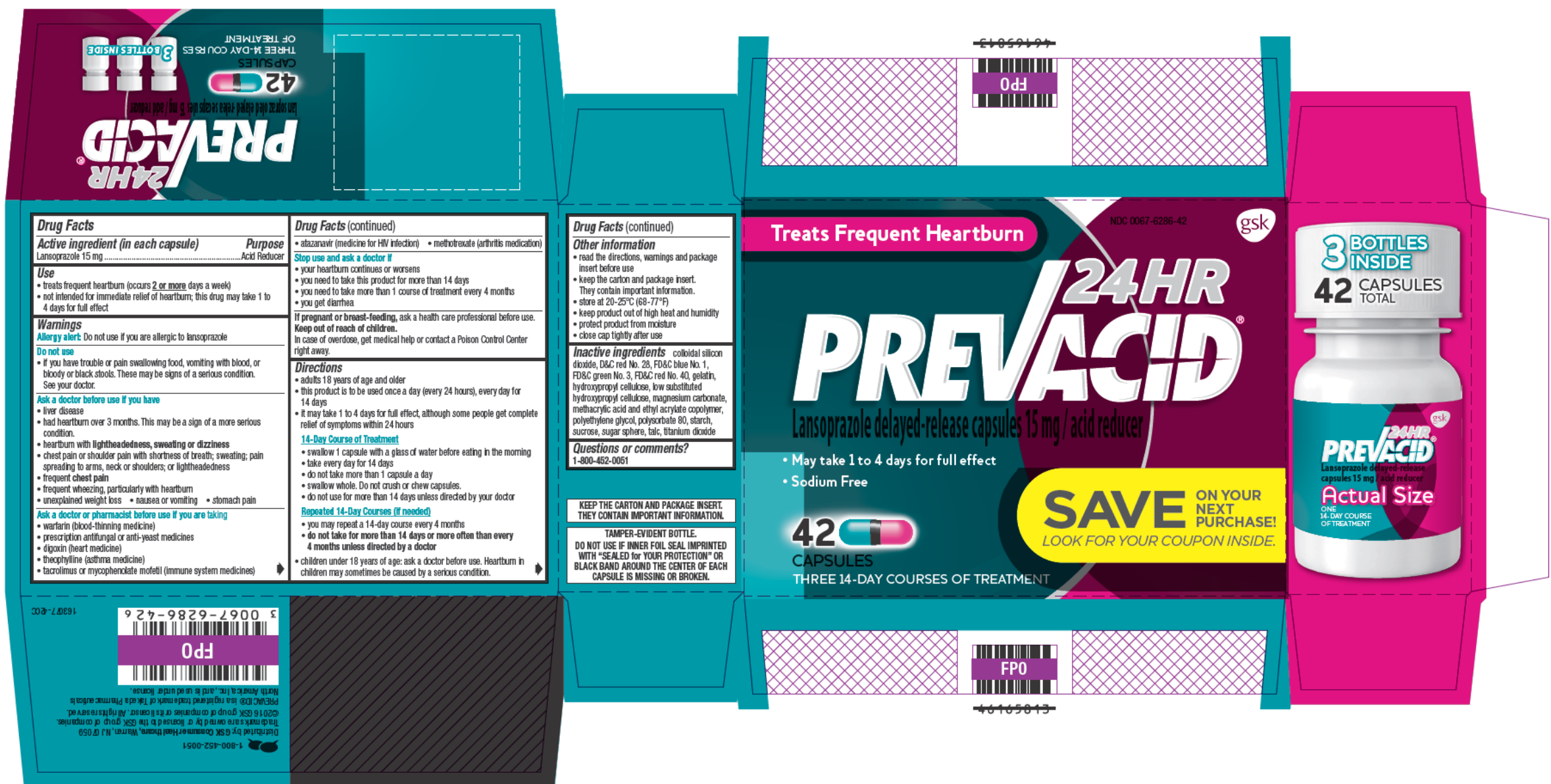
MADE IN: _____
 EXP: _____
 LOT: _____

1-800-452-0051
 Developed by GSK Consumer Health in Warren, NJ 07059
 The name GSK group of companies or its logo, its right reserved.
 ©2016 GSK group of companies or its licensee. All rights reserved.
 PREVACID is a registered name of Helsir Pharmaceuticals
 North America, Inc. with used under license.

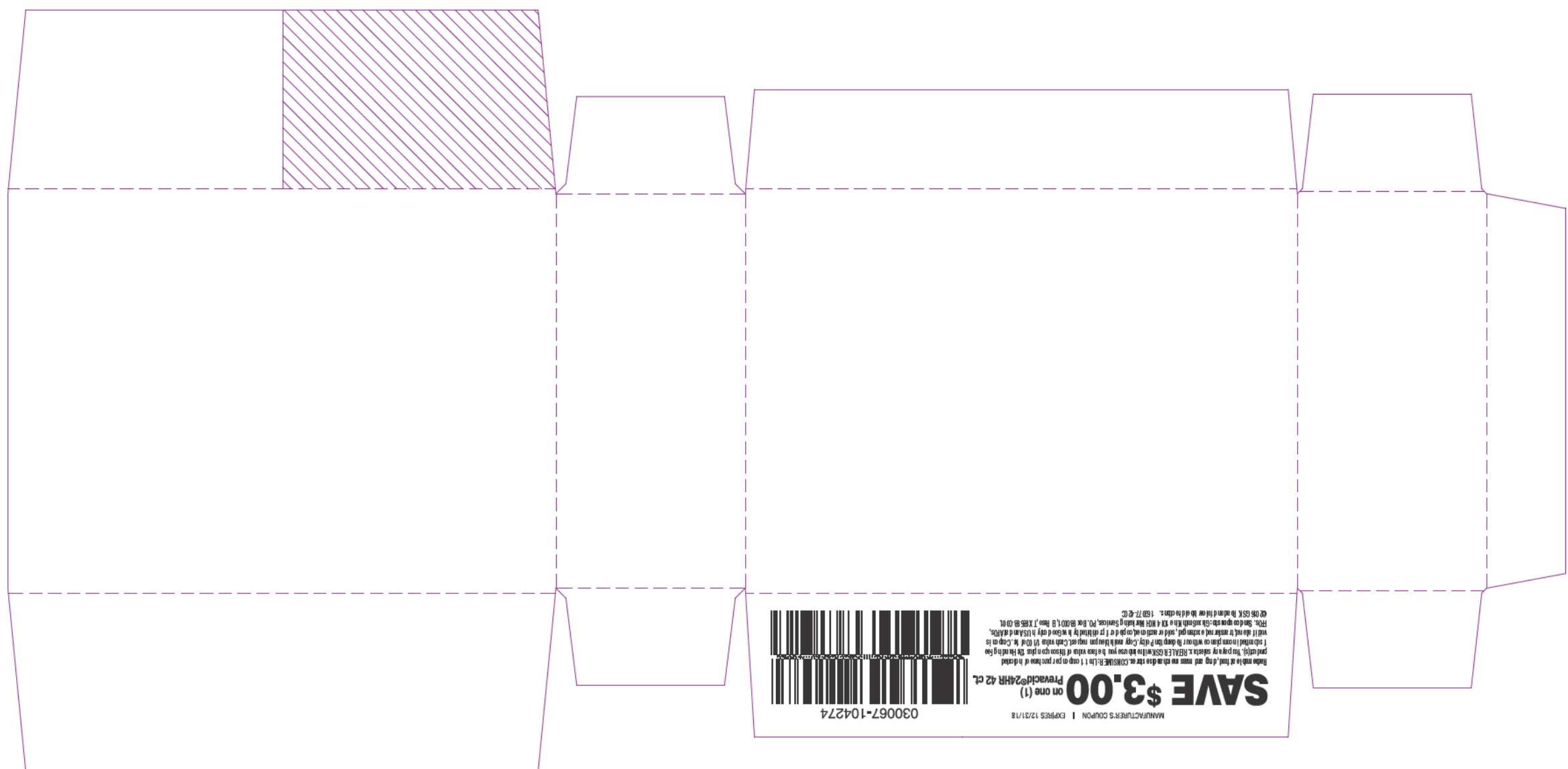


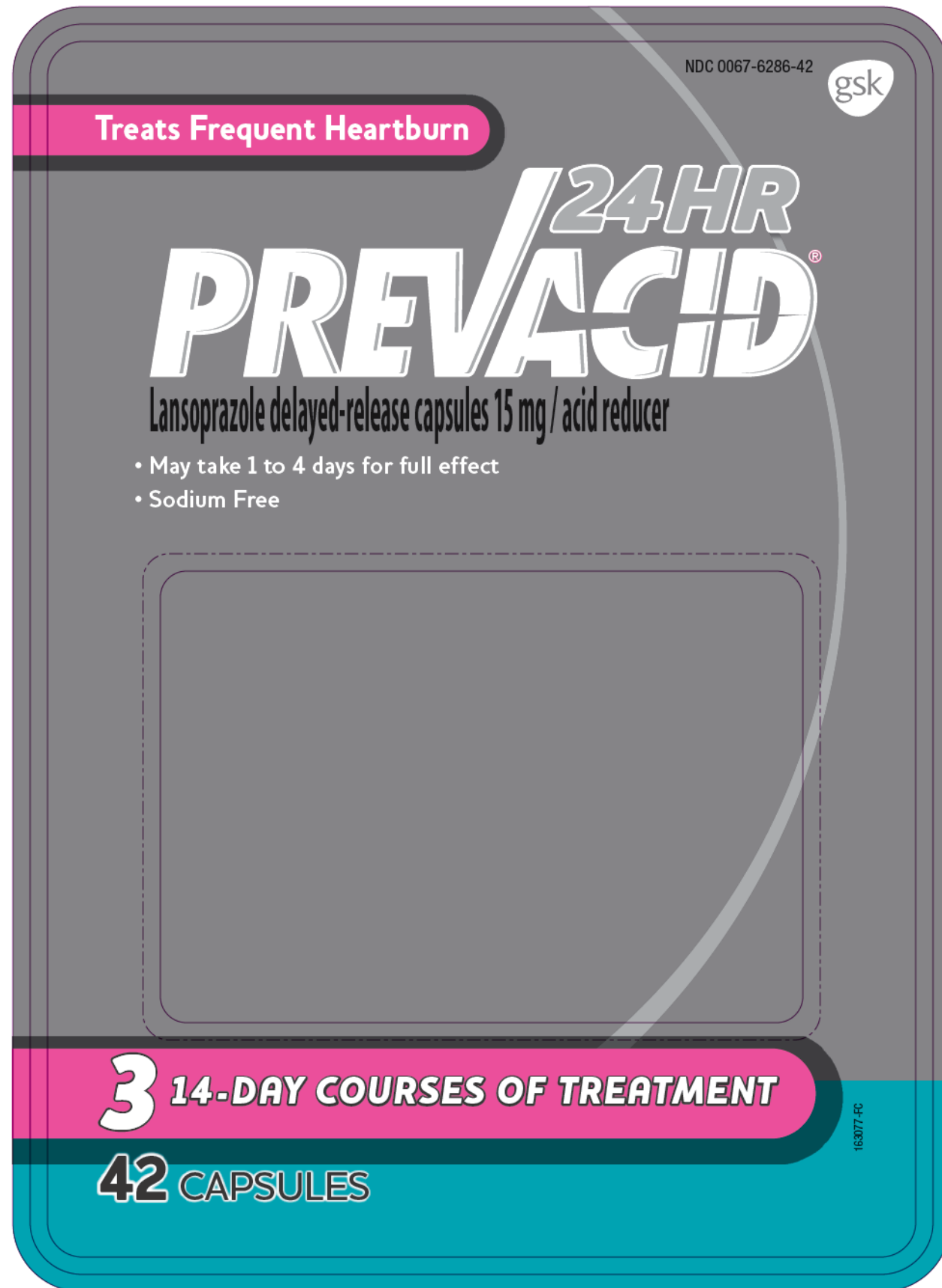
FPO

FOR FDA REVIEW ONLY



FOR FDA REVIEW ONLY





FOR FDA REVIEW ONLY

TAMPER-EVIDENT BOTTLE.
DO NOT USE IF INNER FOIL SEAL IMPRINTED WITH "SEALED for YOUR PROTECTION"
OR BLACK BAND AROUND THE CENTER OF EACH CAPSULE IS MISSING OR BROKEN.

Drug Facts		
Active ingredient (in each capsule) Lansoprazole 15 mg	Purpose Acid Reducer	
Use • treats frequent heartburn (occurs 2 or more days a week) • not intended for immediate relief of heartburn; this drug may take 1 to 4 days for full effect		Directions • adults 18 years of age and older • this product is to be used once a day (every 24 hours), every day for 14 days • it may take 1 to 4 days for full effect, although some people get complete relief of symptoms within 24 hours 14-Day Course of Treatment • swallow 1 capsule with a glass of water before eating in the morning • take every day for 14 days • do not take more than 1 capsule a day • swallow whole. Do not crush or chew capsules. • do not use for more than 14 days unless directed by your doctor Repeated 14-Day Courses (if needed) • you may repeat a 14-day course every 4 months • do not take for more than 14 days or more often than every 4 months unless directed by a doctor • children under 18 years of age: ask a doctor before use. Heartburn in children may sometimes be caused by a serious condition.
Warnings Allergy alert: Do not use if you are allergic to lansoprazole Do not use • if you have trouble or pain swallowing food, vomiting with blood, or bloody or black stools. These may be signs of a serious condition. See your doctor. Ask a doctor before use if you have • liver disease • had heartburn over 3 months. This may be a sign of a more serious condition. • heartburn with lightheadedness, sweating or dizziness • chest pain or shoulder pain with shortness of breath; sweating; pain spreading to arms, neck or shoulders; or lightheadedness • frequent chest pain • frequent wheezing, particularly with heartburn • unexplained weight loss • nausea or vomiting • stomach pain Ask a doctor or pharmacist before use if you are taking • warfarin (blood-thinning medicine) • prescription antifungal or anti-yeast medicines • digoxin (heart medicine) • theophylline (asthma medicine) • tacrolimus or mycophenolate mofetil (immune system medicines) • atazanavir (medicine for HIV infection) • methotrexate (arthritis medication) Stop use and ask a doctor if • your heartburn continues or worsens • you need to take this product for more than 14 days • you need to take more than 1 course of treatment every 4 months • you get diarrhea If pregnant or breast-feeding , ask a health care professional before use. Keep out of reach of children. In case of overdose, get medical help or contact a Poison Control Center right away.		
Other information • read the directions, warnings and all information before use • keep the package. It contains important information. • store at 20-25°C (68-77°F) • keep product out of high heat and humidity • protect product from moisture • close cap tightly after use Inactive ingredients colloidal silicon dioxide, D&C red No. 28, FD&C blue No. 1, FD&C green No. 3, FD&C red No. 40, gelatin, hydroxypropyl cellulose, low substituted hydroxypropyl cellulose, magnesium carbonate, methacrylic acid and ethyl acrylate copolymer, polyethylene glycol, polysorbate 80, starch, sucrose, sugar sphere, talc, titanium dioxide		Questions or comments? 1-800-452-0051

What you should know about PREVACID®24HR

Please read all information before taking PREVACID®24HR.
Save for future reference.

How PREVACID®24HR Treats Your Frequent Heartburn

PREVACID®24HR stops acid production at the source – the pumps that release acid into the stomach. PREVACID®24HR is taken once a day (every 24 hours), every day for 14 days.

What You Can Expect When Taking PREVACID®24HR

Frequent heartburn can occur anytime during the 24-hour period (day or night). Take PREVACID®24HR in the morning before eating. PREVACID®24HR is clinically proven to treat frequent heartburn. Although some people get complete relief of symptoms within 24 hours, it may take 1 to 4 days for full effect. Make sure you take PREVACID®24HR every day for 14 days to treat your frequent heartburn.

Who Should Take PREVACID®24HR

Adults (18 years and older) with frequent heartburn – when you have heartburn 2 or more days a week.

Who Should NOT Take PREVACID®24HR

People who have one episode of heartburn a week or less, or who want immediate relief of heartburn.

How to Take PREVACID®24HR

14-DAY Course of Treatment

- Swallow 1 capsule with a glass of water before eating in the morning.
- Take every day for 14 days.
- Do not take more than 1 capsule a day.
- Swallow whole. Do not crush or chew capsules.
- Do not use for more than 14 days unless directed by your doctor.

When to Take PREVACID®24HR Again

You may repeat a 14-day course of therapy every 4 months.

When to Talk to Your Doctor

Do not take for more than 14 days or more often than every 4 months unless directed by a doctor.

Warnings and When to Ask Your Doctor

Allergy alert: Do not use if you are allergic to lansoprazole

Do not use

- if you have trouble or pain swallowing food, vomiting with blood, or bloody or black stools. These may be signs of a serious condition. See your doctor.

Ask a doctor before use if you have

- liver disease
- had heartburn over 3 months. This may be a sign of a more serious condition.
- heartburn with lightheadedness, sweating or dizziness
- chest pain or shoulder pain with shortness of breath; sweating; pain spreading to arms, neck or shoulders; or lightheadedness
- frequent chest pain
- frequent wheezing, particularly with heartburn
- unexplained weight loss
- nausea or vomiting
- stomach pain

Ask a doctor or pharmacist before use if you are taking

- warfarin (blood-thinning medicine)
- prescription antifungal or anti-yeast medicines
- digoxin (heart medicine)
- theophylline (asthma medicine)
- tacrolimus or mycophenolate mofetil (immune system medicines)
- atazanavir (medicine for HIV infection)
- methotrexate (arthritis medication)

Stop use and ask a doctor if

- your heartburn continues or worsens
- you need to take this product for more than 14 days
- you need to take more than 1 course of treatment every 4 months
- you get diarrhea

If pregnant or breast-feeding, ask a health care professional before use.

Keep out of reach of children. In case of overdose, get medical help or contact a Poison Control Center right away.

Tips for Managing Heartburn

- Avoid foods or drinks that are more likely to cause heartburn, such as rich, spicy, fatty and fried foods, chocolate, caffeine, alcohol and even some acidic fruits and vegetables.
- Eat slowly and do not eat big meals.
- Do not eat late at night or just before bedtime.
- Do not lie flat or bend over soon after eating.
- Raise the head of your bed.
- Wear loose-fitting clothing around your stomach.
- If you are overweight, lose weight.
- If you smoke, quit smoking.

Clinical studies prove PREVACID®24HR effectively treats frequent heartburn

In three clinical studies, PREVACID®24HR was shown to be significantly better than placebo in treating frequent heartburn.

How PREVACID®24HR is Sold

PREVACID®24HR is available in 14 capsule, 28 capsule and 42 capsule sizes. These sizes contain one, two and three 14-day courses of treatment, respectively. Do not use for more than 14 days in a row unless directed by your doctor. For the 28 count (two 14-day courses) and the 42 count (three 14-day courses), you may repeat a 14-day course every 4 months.

For Questions or Comments About PREVACID®24HR
Call 1-800-452-0051


LOT:
EXP:
MADE IN:

1-800-452-0051

Distributed by: GSK Consumer Healthcare, Warren, NJ 07059
Trademarks are owned by or licensed to the GSK group of companies. ©2016 GSK group of companies or its licensor. All rights reserved.
PREVACID® is a registered trademark of Takeda Pharmaceuticals North America, Inc., and is used under license.

163077-8C

FOR FDA REVIEW ONLY



Treats Frequent Heartburn

PREVACID[®] 24HR

Lansoprazole delayed-release capsules 15 mg/ acid reducer

- May take 1 to 4 days for full effect
- Sodium Free

Please read the entire package insert before taking PREVACID[®] 24HR. Save for future reference.

How PREVACID[®] 24HR Treats Your Frequent Heartburn
PREVACID[®] 24HR stops acid production at the source – the **pumps** that release acid into the stomach. PREVACID[®] 24HR is taken once a day (every 24 hours), every day for 14 days.

What You Can Expect When Taking PREVACID[®] 24HR
Frequent heartburn can occur anytime during the 24-hour period (day or night). Take PREVACID[®] 24HR in the morning before eating. PREVACID[®] 24HR is clinically proven to treat frequent heartburn. Although some people get complete relief of symptoms within 24 hours, it may take 1 to 4 days for full effect. Make sure you take PREVACID[®] 24HR every day for 14 days to treat your frequent heartburn.

Who Should Take PREVACID[®] 24HR
Adults (18 years and older) with **frequent heartburn** – when you have heartburn 2 or more days a week.

Who Should NOT Take PREVACID[®] 24HR
People who have one episode of heartburn a week or less, or who want immediate relief of heartburn.

How to Take PREVACID[®] 24HR

14-DAY Course of Treatment

- Swallow 1 capsule with a glass of water before eating in the morning.
- Take every day for 14 days.
- Do not take more than 1 capsule a day.
- Swallow whole. Do not crush or chew capsules.
- Do not use for more than 14 days unless directed by your doctor.


When to Take PREVACID[®] 24HR Again
You may repeat a 14-day course of therapy every 4 months.

When to Talk to Your Doctor
Do not take for more than 14 days or more often than every 4 months unless directed by a doctor.

Warnings and When to Ask Your Doctor
Allergy alert: Do not use if you are allergic to lansoprazole

Do not use

- if you have trouble or pain swallowing food, vomiting with blood, or bloody or black stools. These may be signs of a serious condition. See your doctor.



Ask a doctor before use if you have

- liver disease
- had heartburn over 3 months. This may be a sign of a more serious condition.
- heartburn with **lightheadedness, sweating or dizziness**
- chest pain or shoulder pain with shortness of breath; sweating; pain spreading to arms, neck or shoulders; or lightheadedness
- frequent **chest pain**
- frequent wheezing, particularly with heartburn
- unexplained weight loss
- nausea or vomiting
- stomach pain

Ask a doctor or pharmacist before use if you are taking

- warfarin (blood-thinning medicine)
- prescription antifungal or anti-yeast medicines
- digoxin (heart medicine)
- theophylline (asthma medicine)
- tacrolimus or mycophenolate mofetil (immune system medicines)
- atazanavir (medicine for HIV infection)
- methotrexate (arthritis medication)

Stop use and ask a doctor if

- your heartburn continues or worsens
- you need to take this product for more than 14 days
- you need to take more than 1 course of treatment every 4 months
- you get diarrhea

If pregnant or breast-feeding, ask a health care professional before use.

Keep out of reach of children. In case of overdose, get medical help or contact a Poison Control Center right away.

Tips for Managing Heartburn

- Avoid foods or drinks that are more likely to cause heartburn, such as rich, spicy, fatty and fried foods, chocolate, caffeine, alcohol and even some acidic fruits and vegetables.
- Eat slowly and do not eat big meals.
- Do not eat late at night or just before bedtime.
- Do not lie flat or bend over soon after eating.
- Raise the head of your bed.
- Wear loose-fitting clothing around your stomach.
- If you are overweight, lose weight.
- If you smoke, quit smoking.

Clinical studies prove PREVACID[®] 24HR effectively treats frequent heartburn
In three clinical studies, PREVACID[®] 24HR was shown to be significantly better than placebo in treating frequent heartburn.

How PREVACID[®] 24HR is Sold
PREVACID[®] 24HR is available in 14 capsule, 28 capsule and 42 capsule sizes. These sizes contain one, two and three 14-day courses of treatment, respectively. Do not use for more than 14 days in a row unless directed by your doctor. For the 28 count (two 14-day courses) and the 42 count (three 14-day courses), you may repeat a 14-day course every 4 months.

For Questions or Comments About PREVACID[®] 24HR
Call 1-800-452-0051

Distributed by: GSK Consumer Healthcare, Warren, NJ 07059
Trademarks are owned by or licensed to the GSK group of companies.
©2016 GSK group of companies or its licensors. All rights reserved.
PREVACID[®] is a registered trademark of Takeda Pharmaceuticals North America, Inc., and is used under license. 163077-PI

FOR FDA REVIEW ONLY

This is a representation of an electronic record that was signed electronically and this page is the manifestation of the electronic signature.

/s/

THERESA M MICHELE
02/24/2017