

## HIGHLIGHTS OF PRESCRIBING INFORMATION

These highlights do not include all the information needed to use TOPOTECAN INJECTION safely and effectively. See full prescribing information for TOPOTECAN INJECTION.

TOPOTECAN injection, for intravenous use  
Initial U.S. Approval: 1996

### WARNING: BONE MARROW SUPPRESSION

See full prescribing information for complete boxed warning. Topotecan can cause severe myelosuppression. Administer only to patients with baseline neutrophil counts greater than or equal to 1,500 cells/mm<sup>3</sup> and platelet count greater than or equal to 100,000/mm<sup>3</sup>. Monitor blood cell counts. (5.1)

## RECENT MAJOR CHANGES

Contraindications, Bone Marrow Depression, removed (4) 06/2015

## INDICATIONS AND USAGE

Topotecan injection is a topoisomerase inhibitor indicated for:

- small cell lung cancer platinum-sensitive disease in patients who progressed after first-line chemotherapy. (1.2)
- combination therapy with cisplatin for Stage IV-B, recurrent, or persistent carcinoma of the cervix which is not amenable to curative treatment. (1.3)

## DOSAGE AND ADMINISTRATION

- Small cell lung cancer: 1.5 mg/m<sup>2</sup> by intravenous infusion over 30 minutes daily for 5 consecutive days, starting on Day 1 of a 21-day course. (2.1)
- Cervical cancer: 0.75 mg/m<sup>2</sup> by intravenous infusion over 30 minutes on Days 1, 2, and 3 repeated every 21 days in combination with cisplatin 50 mg/m<sup>2</sup> on Day 1. (2.2)
- Renal impairment: Dose reduce topotecan injection in patients with moderate renal impairment (20 to 39 mL/min). (2.3)

## DOSAGE FORMS AND STRENGTHS

Injection: 4 mg/4 mL (1 mg/mL, topotecan free base equivalent) solution in single-use vial

## CONTRAINDICATIONS

- History of severe hypersensitivity reactions to topotecan. (4)

## WARNINGS AND PRECAUTIONS

- Bone marrow suppression: Administer topotecan only to patients with adequate bone marrow reserves.

Monitor peripheral blood counts and adjust the dose as needed. (2.4, 5.1)

- Neutropenic enterocolitis: Fatal typhlitis can occur. (5.2)
- Interstitial lung disease (ILD): Fatal cases have occurred. Permanently discontinue for confirmed ILD. (5.3)
- Embryofetal toxicity: Can cause fetal harm. Advise women of potential risk to the fetus. (5.4, 8.1, 8.3)
- Extravasation and tissue injury: Severe cases have been reported. If extravasation occurs, immediately stop administration and institute recommended management procedures. (5.5)

## ADVERSE REACTIONS

Small cell lung cancer:

- The most common hematologic adverse reactions were: neutropenia (Grade 4: 70%), anemia (Grade 3/4: 42%), thrombocytopenia (Grade 4: 29%), and febrile neutropenia (28%).
- The most common (>5%) non-hematologic adverse reactions (all grades) were: asthenia, dyspnea, nausea, pneumonia, abdominal pain, and fatigue.

Cervical cancer (topotecan plus cisplatin):

- The most common hematologic adverse reactions were: neutropenia (Grade 3/4: 74%), anemia (Grade 3/4: 40%), and thrombocytopenia (Grade 3/4: 33%). (6.1) The most common (>25% and greater than or equal to 2% more than cisplatin alone) non-hematologic adverse reactions (all grades) were: pain, vomiting, and infection/febrile neutropenia. (6.1)

To report SUSPECTED ADVERSE REACTIONS, contact TEVA USA, PHARMACOVIGILANCE at 1-866-832-8537 or [drug.safety@tevapharm.com](mailto:drug.safety@tevapharm.com); or FDA at 1-800-FDA-1088 or [www.fda.gov/medwatch](http://www.fda.gov/medwatch).

## DRUG INTERACTIONS

- Do not initiate G-CSF until 24 hours after completion of treatment with topotecan. Concomitant administration can prolong duration of neutropenia. (7)

## USE IN SPECIFIC POPULATIONS

- Lactation: Discontinue breastfeeding. (8.2)

See 17 for PATIENT COUNSELING INFORMATION

Revised: 01/2016

## FULL PRESCRIBING INFORMATION: CONTENTS\*

### 1 INDICATIONS AND USAGE

- 1.1 Small Cell Lung Cancer
- 1.2 Cervical Cancer

### 2 DOSAGE AND ADMINISTRATION

- 2.1 Small Cell Lung Cancer
- 2.2 Cervical Cancer
- 2.3 Dose Modifications
- 2.4 Preparation and Intravenous Administration

### 3 DOSAGE FORMS AND STRENGTHS

### 4 CONTRAINDICATIONS

### 5 WARNINGS AND PRECAUTIONS

- 5.1 Bone Marrow Suppression
- 5.2 Neutropenic Enterocolitis
- 5.3 Interstitial Lung Disease
- 5.4 Embryofetal Toxicity

- 5.5 Extravasation and Tissue Injury

### 6 ADVERSE REACTIONS

- 6.1 Clinical Trials Experience
- 6.2 Postmarketing Experience

### 7 DRUG INTERACTIONS

- 7.1 G-CSF

### 8 USE IN SPECIFIC POPULATIONS

- 8.1 Pregnancy
- 8.2 Lactation
- 8.3 Females and Males of Reproductive Potential
- 8.4 Pediatric Use
- 8.5 Geriatric Use
- 8.6 Renal Impairment

### 10 OVERDOSAGE

### 11 DESCRIPTION

**12 CLINICAL PHARMACOLOGY**

12.1 Mechanism of Action

12.3 Pharmacokinetics

**13 NONCLINICAL TOXICOLOGY**

13.1 Carcinogenesis, Mutagenesis, Impairment of Fertility

**14 CLINICAL STUDIES**

14.1 Small Cell Lung Cancer

14.2 Cervical Cancer

**15 REFERENCES**

**16 HOW SUPPLIED/STORAGE AND HANDLING**

16.1 How Supplied

16.2 Storage and Handling

**17 PATIENT COUNSELING INFORMATION**

\*Sections or subsections omitted from the full prescribing information are not listed.

**FULL PRESCRIBING INFORMATION**

**WARNING: BONE MARROW SUPPRESSION**

Topotecan can cause severe myelosuppression. Administer only to patients with baseline neutrophil counts of greater than or equal to 1,500 cells/mm<sup>3</sup> and platelet counts greater than or equal to 100,000 cells/mm<sup>3</sup>. Monitor blood cell counts [see *Warnings and Precautions (5.1)*].

**1 INDICATIONS AND USAGE**

**1.1 Small Cell Lung Cancer**

Topotecan injection, as a single agent, is indicated for the treatment of patients with small cell lung cancer with platinum-sensitive disease who progressed at least 60 days after initiation of first-line chemotherapy.

**1.2 Cervical Cancer**

Topotecan injection in combination with cisplatin is indicated for the treatment of patients with Stage IV-B, recurrent, or persistent carcinoma of the cervix not amenable to curative treatment.

**2 DOSAGE AND ADMINISTRATION**

Verify dose using body surface area prior to dispensing. Recommended dosage should generally not exceed 4 mg intravenously [see *Overdosage (10)*].

**2.1 Small Cell Lung Cancer**

Recommended Dose and Schedule

The recommended dose of topotecan injection is 1.5 mg/m<sup>2</sup> by intravenous infusion over 30 minutes daily for 5 consecutive days, starting on Day 1 of a 21-day course.

**2.2 Cervical Cancer**

Recommended Dose and Schedule

The recommended dose of topotecan injection is 0.75 mg/m<sup>2</sup> by intravenous infusion over 30 minutes daily on Days 1, 2, and 3 in combination with cisplatin 50 mg/m<sup>2</sup> on Day 1, repeated every 21 days.

**2.3 Dose Modifications**

Hematologic Toxicities

*For single-agent use, dose reduce topotecan injection to 1.25 mg/m<sup>2</sup> for:*

- neutrophil counts of less than 500 cells/mm<sup>3</sup>, or administer granulocyte-colony stimulating factor (G-CSF) starting no sooner than 24 hours following the last dose of topotecan.
- platelet counts less than 25,000 cells/mm<sup>3</sup> during previous cycle.

*For combination use with cisplatin, dose reduce topotecan injection to 0.60 mg/m<sup>2</sup> (and further to 0.45 mg/m<sup>2</sup> if necessary) for:*

- febrile neutropenia (defined as neutrophil counts less than 1,000 cells/mm<sup>3</sup> with temperature of greater than or equal to 38°C (100.4°F), or administer G-CSF starting no sooner than 24 hours following the last dose of topotecan.
- platelet counts less than 25,000 cells/mm<sup>3</sup> during previous cycle.

### Renal Impairment

*For single-agent use, dose reduce topotecan injection to 0.75 mg/m<sup>2</sup> in patients with moderate renal impairment (creatinine clearance [Clcr] = 20 to 39 mL/min). Insufficient data are available in patients with severe renal impairment (Clcr less than 20 mL/min) to provide a dosage recommendation for topotecan injection [see Use in Specific Populations (8.6), Clinical Pharmacology (12.3)].*

## **2.4 Preparation and Intravenous Administration**

Topotecan injection is a cytotoxic drug. Follow applicable special handling and disposable procedures.<sup>1</sup>

### Preparation and Administration

Dilute topotecan injection in either 0.9% Sodium Chloride, USP or 5% Dextrose in Water, USP prior to administration.

### Stability

Store diluted topotecan injection solutions at approximately 20°C to 25°C (68°F to 77°F) for no more than 4 hours or under refrigerated [2°C to 8°C (36°F to 46°F)] conditions for no more than 12 hours.

## **3 DOSAGE FORMS AND STRENGTHS**

Injection: 4 mg/4 mL (1 mg/mL, topotecan free base equivalent) clear, light yellow to greenish solution in single-use vial.

## **4 CONTRAINDICATIONS**

Topotecan injection is contraindicated in patients who have a history of severe hypersensitivity reactions to topotecan.

## 5 WARNINGS AND PRECAUTIONS

### 5.1 Bone Marrow Suppression

Bone marrow suppression (primarily neutropenia) is the dose-limiting toxicity of topotecan. Neutropenia is not cumulative over time. Severe myelotoxicity has been reported when topotecan is used in combination with cisplatin [see *Drug Interactions* (7)].

- The following data on myelosuppression are based on an integrated safety database from 8 trials (N = 879) using topotecan injection at 1.5 mg/m<sup>2</sup> by intravenous infusion over 30 minutes daily for 5 consecutive days, starting on Day 1 of a 21-day course in patients with ovarian cancer and small cell lung cancer and from one trial in patients with cervical cancer (N = 147) using topotecan 0.75 mg/m<sup>2</sup> by intravenous infusion over 30 minutes daily on Days 1, 2, and 3 repeated every 21 days in combination with cisplatin 50 mg/m<sup>2</sup> on Day 1.

#### Neutropenia

- Monotherapy: Grade 4 neutropenia (less than 500 cells/mm<sup>3</sup>) occurred in 78% of patients, with a median duration of 7 days and was most common during Course 1 of treatment (58% of patients). Grade 4 neutropenia associated with infection occurred in 13% of patients and febrile neutropenia occurred in 5% of patients. Sepsis occurred in 4% of patients and was fatal in 1% of patients. Pancytopenia has been reported.

Combination with cisplatin: Grade 4 neutropenia occurred in 48% of patients.

#### Thrombocytopenia

- Monotherapy: Grade 4 thrombocytopenia (less than 25,000/mm<sup>3</sup>) occurred in 27% of patients, with a median duration of 5 days.
- Combination with cisplatin: Grade 4 thrombocytopenia occurred in 7% of patients.

#### Anemia

- Monotherapy: Grade 3 or 4 anemia (less than 8 g/dL) occurred in 37% of patients.
- Combination with cisplatin: Grade 3 or Grade 4 anemia occurred in 40% of patients.

Administer topotecan only to patients with a baseline neutrophil count of greater than or equal to 1,500 cells/mm<sup>3</sup> and a platelet count greater than or equal to 100,000/mm<sup>3</sup>. Monitor peripheral blood counts frequently during treatment with topotecan. Refer to Section 2.4 for dose modification guidelines for hematological toxicities in subsequent courses. Do not treat patients with subsequent courses of topotecan until neutrophils recover to greater than 1,000 cells/mm<sup>3</sup>, platelets recover to greater than 100,000 cells/mm<sup>3</sup>, and hemoglobin levels recover to 9 g/dL (with transfusion if necessary).

### 5.2 Neutropenic Enterocolitis

Topotecan can cause fatal typhlitis (neutropenic enterocolitis). Consider the possibility of typhlitis in patients presenting with fever, neutropenia, and abdominal pain.

### 5.3 Interstitial Lung Disease

Interstitial lung disease (ILD), including fatalities, has occurred with topotecan. Underlying risk factors include history of ILD, pulmonary fibrosis, lung cancer, thoracic radiation, and use of pneumotoxic drugs and/or colony stimulating factors. Monitor patients for pulmonary symptoms indicative of ILD (e.g., cough, fever, dyspnea, and/or hypoxia), and discontinue topotecan if a new diagnosis of ILD is confirmed.

### 5.4 Embryofetal Toxicity

Based on animal data, topotecan can cause fetal harm when administered to a pregnant woman. Topotecan caused embryoletality, fetotoxicity, and teratogenicity in rats and rabbits when administered during organogenesis. Advise females of reproductive potential to use effective contraception during treatment and for at least 1 month after the last dose of topotecan. Advise women of the potential risk to a fetus [*see Use in Specific Populations (8.1, 8.3)*].

### 5.5 Extravasation and Tissue Injury

Extravasation with topotecan has been observed; severe cases have been reported. If signs or symptoms of extravasation occur, immediately stop administration of topotecan and institute recommended management procedures [*see Adverse Reactions (6)*].

## 6 ADVERSE REACTIONS

The following serious adverse reactions are described below and elsewhere in the labeling:

- Bone Marrow Suppression [*see Warnings and Precautions (5.1)*]
- Neutropenic Enterocolitis [*see Warnings and Precautions (5.2)*]
- Interstitial Lung Disease [*see Warnings and Precautions (5.3)*]
- Extravasation and Tissue Injury [*see Warnings and Precautions (5.5)*]

### 6.1 Clinical Trials Experience

Because clinical trials are conducted under widely varying conditions, adverse reaction rates observed in the clinical trials of a drug cannot be directly compared with rates in the clinical trials of another drug and may not reflect the rates observed in practice.

### Small Cell Lung Cancer

Table 1 shows the Grade 3/4 hematologic and major non-hematologic adverse reactions in the topotecan/CAV (cyclophosphamide-doxorubicin-vincristine) comparator trial in small cell lung cancer.

**Table 1. Adverse Reactions Experienced by  $\geq 5\%$  of Small Cell Lung Cancer Patients Randomized to Receive Topotecan or CAV**

Adverse Reaction	Topotecan (n = 107)	CAV (n = 104)
<b>Hematologic Grade 3/4</b>	<b>%</b>	<b>%</b>
Grade 4 neutropenia ( $<500$ cells/mm <sup>3</sup> )	70	72
Grade 3/4 anemia (Hgb $<8$ g/dL)	42	20
Grade 4 thrombocytopenia ( $<25,000$ plts/mm <sup>3</sup> )	29	5
Febrile neutropenia	28	26
<b>Non-hematologic Grade 3/4</b>	<b>%</b>	<b>%</b>
<b>Infections and infestations</b>		
Sepsis <sup>1</sup>	5	5
<b>Respiratory, thoracic, and mediastinal disorders</b>		
Dyspnea	9	14
Pneumonia	8	6
<b>Gastrointestinal disorders</b>		
Abdominal pain	6	4
Nausea	8	6
<b>General disorders and administrative site conditions</b>		
Fatigue	6	10
Asthenia	9	7
Pain <sup>2</sup>	5	7

1. Death related to sepsis occurred in 3% of patients receiving topotecan and 1% of patients receiving CAV.
2. Pain includes body pain, skeletal pain, and back pain.

*Hepatobiliary Disorders in Small Cell Lung Cancer Patients Receiving Topotecan:* Based on 426 patients with small cell lung cancer treated with topotecan, Grade 1 transient elevations in hepatic enzymes occurred in 8% of patients. Grade 3/4 elevations occurred in 4%. Grade 3/4 elevated bilirubin occurred in less than 2% of patients.

### Cervical Cancer

In the comparative trial with topotecan plus cisplatin versus cisplatin in patients with cervical cancer, the most common dose-limiting adverse reaction was myelosuppression. Table 2 shows the hematologic and non-hematologic adverse reactions in patients with cervical cancer.

**Table 2. Adverse Reactions Experienced by  $\geq 5\%$  of Patients with Cervical Cancer Randomized to Receive Topotecan plus Cisplatin or Cisplatin Monotherapy (Between-Arm Difference  $\geq 2\%$ )<sup>1</sup>**

<b>Adverse Reaction</b>	<b>Topotecan plus Cisplatin (n = 140) %</b>	<b>Cisplatin (n = 144) %</b>
<b>Hematologic</b>		
Neutropenia		
Grade 3 (<1,000 to 500 cells/mm <sup>3</sup> )	26	1
Grade 4 (<500 cells/mm <sup>3</sup> )	48	1
Anemia		
Grade 3 (Hgb <8 to 6.5 g/dL)	34	19
Grade 4 (Hgb <6.5 g/dL)	6	3
Thrombocytopenia		
Grade 3 (<50,000 to 10,000 cells/mm <sup>3</sup> )	26	3
Grade 4 (<10,000 cells/mm <sup>3</sup> )	7	0
<b>Non-hematologic<sup>2,3</sup></b>		
<b>General disorders and administrative site conditions</b>		
Constitutional <sup>4</sup>	69	62
Pain <sup>5</sup>	59	50
<b>Gastrointestinal disorders</b>		
Vomiting	40	37
Stomatitis-pharyngitis	6	0
Other	63	56
<b>Dermatology<sup>6</sup></b>	48	20
<b>Infection-febrile neutropenia<sup>6</sup></b>	28	18
<b>Cardiovascular<sup>6</sup></b>	25	15

1. Includes patients who were eligible and treated.
2. Data were collected using NCI Common Toxicity Criteria, v. 2.0
3. Grades 1 through 4 only. There were 3 patients who experienced deaths with investigator-designated attribution. The first patient experienced a Grade 5 hemorrhage in which the drug-related thrombocytopenia aggravated the event. A second patient experienced bowel obstruction, cardiac arrest, pleural effusion, and respiratory failure which were not treatment-related but probably aggravated by treatment. A third patient experienced a pulmonary embolism and adult respiratory distress syndrome; the latter was indirectly treatment-related.
4. Constitutional includes fatigue (lethargy, malaise, asthenia), fever (in the absence of neutropenia), rigors, chills, sweating, and weight gain or loss.
5. Pain includes abdominal pain or cramping, arthralgia, bone pain, chest pain (non-cardiac and non-pleuritic), dysmenorrhea, dyspareunia, earache, headache, hepatic pain, myalgia, neuropathic pain, pain due to radiation, pelvic pain, pleuritic pain, rectal or perirectal pain, and tumor pain.
6. High-level terms were included if the between-arm difference was  $\geq 10\%$ .

## 6.2 Postmarketing Experience

The following reactions have been identified during postmarketing use of topotecan. Because they are reported voluntarily from a population of unknown size, estimates of frequency cannot be made. These reactions have been chosen for inclusion due to a combination of their seriousness, frequency of reporting, or potential causal connection to topotecan.

### Blood and Lymphatic System Disorders

Severe bleeding (in association with thrombocytopenia) [*see Warnings and Precautions (5.1)*].

### Immune System Disorders

Allergic manifestations, anaphylactoid reactions.

### Gastrointestinal Disorders

Abdominal pain potentially associated with neutropenic enterocolitis [*see Warnings and Precautions (5.2)*].

### Pulmonary Disorders

Interstitial lung disease [*see Warnings and Precautions (5.3)*].

### Skin and Subcutaneous Tissue Disorders

Angioedema, severe dermatitis, severe pruritus.

### General Disorders and Administration Site Conditions

Extravasation [*see Warnings and Precautions (5.5)*].

## 7 DRUG INTERACTIONS

### 7.1 G-CSF

Concomitant administration with G-CSF can prolong the duration of neutropenia. If G-CSF is used, it should be started no sooner than 24 hours following the last dose of topotecan.

## 8 USE IN SPECIFIC POPULATIONS

### 8.1 Pregnancy

#### Risk Summary

Based on animal data, topotecan can cause fetal harm when administered to a pregnant woman. Topotecan caused embryoletality, fetotoxicity, and teratogenicity in rats and rabbits when administered during organogenesis at doses similar to the clinical dose [*see Data*]. There are no available human data informing the drug-associated risk. Advise pregnant women of the potential risk to a fetus. The background risk of major birth defects and miscarriage for the indicated populations are unknown;

however, the background risk in the US general population of major birth defects is 2% to 4% and of miscarriage is 15% to 20% of clinically recognized pregnancies.

#### Data

*Animal Data:* In rabbits, a dose of 0.10 mg/kg/day (about equal to the clinical dose on a mg/m<sup>2</sup> basis) given on Days 6 through 20 of gestation caused maternal toxicity, embryoletality, and reduced fetal body weight. In the rat, a dose of 0.23 mg/kg/day (about equal to the clinical dose on a mg/m<sup>2</sup> basis) given for 14 days before mating through gestation Day 6 caused fetal resorption, microphthalmia, pre-implant loss, and mild maternal toxicity. Administration of an intravenous dose of 0.10 mg/kg/day (about half the clinical dose on a mg/m<sup>2</sup> basis) given to rats on Days 6 through 17 of gestation caused an increase in post-implantation mortality. This dose also caused an increase in total fetal malformations. The most frequent malformations were of the eye (microphthalmia, anophthalmia, rosette formation of the retina, coloboma of the retina, ectopic orbit), brain (dilated lateral and third ventricles), skull, and vertebrae.

## **8.2 Lactation**

### Risk Summary

It is not known whether this drug is present in human milk; however, topotecan is excreted in rat milk at high concentrations [*see Data*]. Because many drugs are present in human milk and because of the potential for serious adverse reactions in nursing infants with topotecan, advise nursing mothers to discontinue breastfeeding during treatment with topotecan.

### Data

*Animal Data:* Following intravenous administration of topotecan to lactating rats at a dose of 4.72 mg/m<sup>2</sup> (about twice the clinical dose on a mg/m<sup>2</sup> basis), topotecan was excreted into milk at concentrations up to 48-fold higher than those in plasma.

## **8.3 Females and Males of Reproductive Potential**

### Contraception

*Females:* Advise female patients of reproductive potential to use effective contraception during treatment with topotecan and for one month after the last dose. Advise females to contact their healthcare provider if they become pregnant, or if pregnancy is suspected, while taking topotecan [*see Use in Specific Populations (8.1)*].

*Males:* Topotecan may damage spermatozoa, resulting in possible genetic and fetal abnormalities. Advise males with a female sexual partner of reproductive potential to use effective contraception during and for three months after treatment with topotecan [*see Nonclinical Toxicology (13.1)*].

### Infertility

*Females:* Topotecan may have both acute and long-term effects on fertility [*see Nonclinical Toxicology (13.1)*].

*Males:* Effects on spermatogenesis have been observed in animals administered topotecan. Advise males of the potential risk for impaired fertility and to seek counseling on fertility and family planning options prior to starting treatment [*see Nonclinical Toxicology (13.1)*].

#### **8.4 Pediatric Use**

Safety and effectiveness in pediatric patients have not been established.

#### **8.5 Geriatric Use**

Of the 879 patients in a combined experience of topotecan which included patients with small cell lung cancer in clinical trials of topotecan, 32% (n = 281) were aged 65 years and older, while 3.8% (n = 33) were aged 75 years and older. Of the 140 patients with Stage IV-B, relapsed, or refractory cervical cancer in clinical trials of topotecan who received topotecan plus cisplatin in the randomized clinical trial, 6% (n = 9) were aged 65 years and older, while 3% (n = 4) were aged 75 years and older.

No overall differences in effectiveness or safety were observed between these patients and younger adult patients, and other reported clinical experience has not identified differences in responses between the elderly and younger adult patients.

#### **8.6 Renal Impairment**

The systemic exposure to both topotecan lactone and total topotecan increased in patients with moderate renal impairment (Clcr = 20 to 39 mL/min) compared with patients with normal renal function (Clcr greater than 60 mL/min). Reduce the dose of topotecan in patients with moderate renal impairment (Clcr = 20 to 39 mL/min). No dosage adjustment of topotecan is recommended for patients with mild renal impairment (Clcr = 40 to 60 mL/min) [*see Dosage and Administration (2.4), Clinical Pharmacology (12.3)*].

Insufficient data are available in patients with severe renal impairment (Clcr less than 20 mL/min) to provide a dosage recommendation for topotecan.

### **10 OVERDOSAGE**

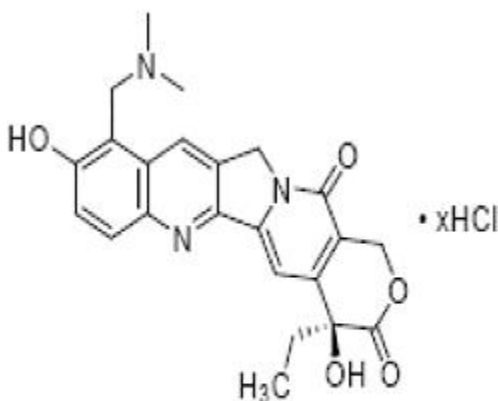
Overdoses (up to 10-fold of the prescribed dose) occurred in patients treated with intravenous topotecan. The primary complication of overdosage is bone marrow suppression. The observed signs and symptoms of overdose are consistent with the known adverse reactions associated with topotecan for intravenous use [*see Adverse Reactions (6.1, 6.2)*]. In addition, elevated hepatic enzymes and mucositis have been reported following overdose. One patient received a single dose of 40 mg/m<sup>2</sup> of intravenous topotecan and developed gastrointestinal toxicity, skin toxicity, and myelosuppression leading to septic shock. Another patient received a single dose of 35 mg/m<sup>2</sup> and experienced severe, reversible neutropenia.

There is no known antidote for overdosage with topotecan. If an overdose is suspected, monitor the patient closely for bone marrow suppression and institute supportive-care measures (such as the prophylactic use of G-CSF and antibiotic therapy) as appropriate.

## 11 DESCRIPTION

Topotecan is a semi-synthetic derivative of camptothecin and is an anti-tumor drug with topoisomerase I-inhibitory activity. The chemical name for topotecan hydrochloride is (S)-10-[(dimethylamino)methyl]-4-ethyl-4,9-dihydroxy-1*H*-pyrano[3',4':6,7] indolizino [1,2-*b*]quinoline-3,14-(4*H*,12*H*)-dione 1.25 hydrochloride. It has the molecular formula  $C_{23}H_{23}N_3O_5 \cdot xHCl$  ( $x = 1.25$ ) and a molecular weight of 467.02. It is soluble in water and melts with decomposition at 213°C to 218°C.

As formulated in topotecan injection, topotecan hydrochloride has the following structural formula:



Note:  $x = 1.25$

Topotecan injection is supplied as a sterile, non-pyrogenic, clear, light yellow to greenish solution in single-use vials at a topotecan free base concentration of 4 mg/4 mL (1 mg/mL).

Each mL contains topotecan hydrochloride equivalent to 1 mg of topotecan free base, 12 mg of mannitol, USP, and 5 mg of tartaric acid, NF. It may also contain hydrochloric acid and sodium hydroxide to adjust the pH. The solution pH ranges from 2.0 to 2.5.

## 12 CLINICAL PHARMACOLOGY

### 12.1 Mechanism of Action

Topoisomerase I relieves torsional strain in DNA by inducing reversible single-strand breaks. Topotecan binds to the topoisomerase I-DNA complex and prevents re-ligation of these single-strand breaks. The cytotoxicity of topotecan is thought to be due to double-strand DNA damage produced during DNA synthesis, when replication enzymes interact with the ternary complex formed by topotecan, topoisomerase I, and DNA. Mammalian cells cannot efficiently repair these double-strand breaks.

### 12.3 Pharmacokinetics

Following administration of topotecan at doses of 0.5 to 1.5 mg/m<sup>2</sup> administered as a 30-minute infusion to cancer patients, topotecan exhibited multiexponential pharmacokinetics with a terminal half-life of 2 to 3 hours. Total exposure (AUC) is approximately dose-proportional.

### Distribution

Binding of topotecan to plasma proteins is approximately 35%.

### Metabolism

Topotecan undergoes a reversible pH-dependent hydrolysis of its lactone moiety; it is the lactone form that is pharmacologically active. At pH  $\leq 4$ , the lactone is exclusively present, whereas the ring-opened hydroxy-acid form predominates at physiologic pH. *In vitro* studies in human liver microsomes indicate topotecan is metabolized to an N-demethylated metabolite. The mean metabolite:parent AUC ratio was about 3% for total topotecan and topotecan lactone following IV administration.

### Excretion

Renal clearance is the primary route of topotecan elimination.

In a mass balance/excretion trial in 4 patients with solid tumors, the overall recovery of total topotecan and its N-desmethyl metabolite in urine and feces over 9 days averaged  $73.4\% \pm 2.3\%$  of the administered IV dose. Mean values of  $50.8\% \pm 2.9\%$  as total topotecan and  $3.1\% \pm 1\%$  as N-desmethyl topotecan were excreted in the urine following IV administration. Fecal elimination of total topotecan accounted for  $17.9\% \pm 3.6\%$  while fecal elimination of N-desmethyl topotecan was  $1.7\% \pm 0.6\%$ . An O-glucuronidation metabolite of topotecan and N-desmethyl topotecan has been identified in the urine.

### Specific Populations

*Gender:* Plasma clearance of topotecan lactone in male patients was approximately 24% higher than that in female patients, largely reflecting difference in body size.

*Age:* Population pharmacokinetic analysis in female patients did not identify age as a significant factor. Decreased renal clearance, which is common in the elderly, is a more important determinant of topotecan clearance [see *Dosage and Administration* (2.4), *Use in Specific Populations* (8.5)].

*Renal Impairment:* In patients with mild renal impairment (Clcr = 40 to 60 mL/min), plasma clearance of topotecan lactone was decreased by 33% compared with patients with normal renal function (Clcr greater than 60 mL/min). In patients with moderate renal impairment (Clcr = 20 to 39 mL/min), plasma clearance of topotecan lactone was reduced by 65% compared with patients with normal renal function. Dosage adjustment is recommended for patients with moderate renal impairment. No dosage adjustment is required in patients with mild renal impairment [see *Dosage and Administration* (2.4), *Use in Specific Populations* (8.6)].

*Hepatic Impairment:* Plasma clearance of topotecan lactone in patients with hepatic impairment serum bilirubin levels between 1.7 and 15 mg/dL) was decreased by 33% compared with patients with normal hepatic function (serum bilirubin levels less than 1.7 mg/dL).

### Drug Interactions

*Effects of Topotecan on Drug-Metabolizing Enzymes:* *In vitro* inhibition studies using marker substrates for human P450 CYP1A2, CYP2A6, CYP2C8/9, CYP2C19, CYP2D6, CYP2E, CYP3A, or CYP4A or

dihydropyrimidine dehydrogenase indicate that the activities of these enzymes were not altered by topotecan.

*Cisplatin:* Administration of cisplatin (60 or 75 mg/m<sup>2</sup> on Day 1) before topotecan (0.75 mg/m<sup>2</sup>/day on Days 1 to 5) in 9 patients with ovarian cancer had no significant effect on the C<sub>max</sub> and AUC of total topotecan.

Topotecan (0.3 mg/m<sup>2</sup> IV daily on Days 2 to 6) had no effect on the pharmacokinetics of free platinum in 15 patients with ovarian cancer who were administered cisplatin 50 mg/m<sup>2</sup> (n = 9) or 75 mg/m<sup>2</sup> (n = 6) on Day 2 after paclitaxel 110 mg/m<sup>2</sup> on Day 1. Topotecan (0.75 mg/m<sup>2</sup> IV daily on Days 1 to 5) had no effect on dose-normalized (60 mg/m<sup>2</sup>) C<sub>max</sub> values of free platinum in 13 patients with ovarian cancer who were administered 60 mg/m<sup>2</sup> (n = 10) or 75 mg/m<sup>2</sup> (n = 3) cisplatin on Day 1.

## 13 NONCLINICAL TOXICOLOGY

### 13.1 Carcinogenesis, Mutagenesis, Impairment of Fertility

Carcinogenicity testing of topotecan has not been performed. Topotecan is known to be genotoxic to mammalian cells and is a probable carcinogen. Topotecan was mutagenic to L5178Y mouse lymphoma cells and clastogenic to cultured human lymphocytes with and without metabolic activation. It was also clastogenic to mouse bone marrow. Topotecan did not cause mutations in bacterial cells.

Topotecan given to female rats prior to mating at a dose of 1.4 mg/m<sup>2</sup> IV (about equal to the clinical dose on a mg/m<sup>2</sup> basis) caused superovulation possibly related to inhibition of follicular atresia. This dose given to pregnant female rats also caused increased pre-implantation loss. Studies in dogs given 0.4 mg/m<sup>2</sup> IV (about 0.25 times the clinical dose on a mg/m<sup>2</sup> basis) of topotecan daily for a month suggest that treatment may cause an increase in the incidence of multinucleated spermatogonial giant cells in the testes. Topotecan may impair fertility in women and men.

## 14 CLINICAL STUDIES

### 14.1 Small Cell Lung Cancer

Topotecan was studied in 426 patients with recurrent or progressive small cell lung cancer in 1 randomized, comparative trial and in 3 single-arm trials.

#### Randomized Comparative Trial

In a randomized, comparative, Phase 3 trial, 107 patients were treated with topotecan (1.5 mg/m<sup>2</sup>/day × 5 days starting on Day 1 of a 21-day course) and 104 patients were treated with CAV (1,000 mg/m<sup>2</sup> cyclophosphamide, 45 mg/m<sup>2</sup> doxorubicin, 2 mg vincristine administered sequentially on Day 1 of a 21-day course). All patients were considered sensitive to first-line chemotherapy (responders who then subsequently progressed greater than or equal to 60 days after completion of first-line therapy). A total of 77% of patients treated with topotecan and 79% of patients treated with CAV received platinum/etoposide with or without other agents as first-line chemotherapy. The efficacy outcome measures were response rate and duration of response.

The results of the trial did not show statistically significant improvements in response rates, response duration, time to progression, and overall survival as shown in Table 3.

**Table 3. Efficacy of Topotecan versus CAV (cyclophosphamide-doxorubicin-vincristine) in Small Cell Lung Cancer Patients Sensitive to First-Line Chemotherapy**

Parameter	Topotecan (n = 107)	CAV (n = 104)
Overall response rate (95% CI)	24% (16% to 32%)	18% (11% to 26%)
Complete response rate	0%	1%
Partial response rate	24%	17%
Response duration <sup>1</sup> (months) Median (95% CI)	3.3 (3 to 4.1)	3.5 (3 to 5.3)
Time to progression (months) Median (95% CI)	3.1 (2.6 to 4.1)	2.8 (2.5 to 3.2)
HR (topotecan:CAV) (95% CI)	0.92 (0.69 to 1.22)	
Survival (months) Median (95% CI)	5.8 (4.7 to 6.8)	5.7 (5 to 7)
HR (topotecan:CAV) (95% CI)	1.04 (0.78 to 1.39)	

HR = hazard ratio; CI = confidence interval.

1. The calculation for duration of response was based on the interval between first response and time to progression.

The time to response was similar in both arms: Topotecan median of 6 weeks (range: 2.4 to 15.7) versus CAV median 6 weeks (range: 5.1 to 18.1).

Changes on a disease-related symptom scale in patients who received topotecan or who received CAV are presented in Table 4. It should be noted that not all patients had all symptoms, nor did all patients respond to all questions. Each symptom was rated on a 4-category scale with an improvement defined as a change in 1 category from baseline sustained over 2 courses. Limitations in interpretation of the rating scale and responses preclude formal statistical analysis.

**Table 4. Percentage of Patients with Symptom Improvement<sup>1</sup>: Topotecan versus CAV in Patients with Small Cell Lung Cancer**

Symptom	Topotecan (n = 107)		CAV (n = 104)	
	n <sup>2</sup>	(%)	n <sup>2</sup>	(%)
Shortness of breath	68	(28)	61	(7)
Interference with daily activity	67	(27)	63	(11)
Fatigue	70	(23)	65	(9)
Hoarseness	40	(33)	38	(13)
Cough	69	(25)	61	(15)
Insomnia	57	(33)	53	(19)
Anorexia	56	(32)	57	(16)
Chest pain	44	(25)	41	(17)
Hemoptysis	15	(27)	12	(33)

1. Defined as improvement sustained over at least 2 courses compared with baseline.
2. Number of patients with baseline and at least 1 post-baseline assessment.

### Single-Arm Trials

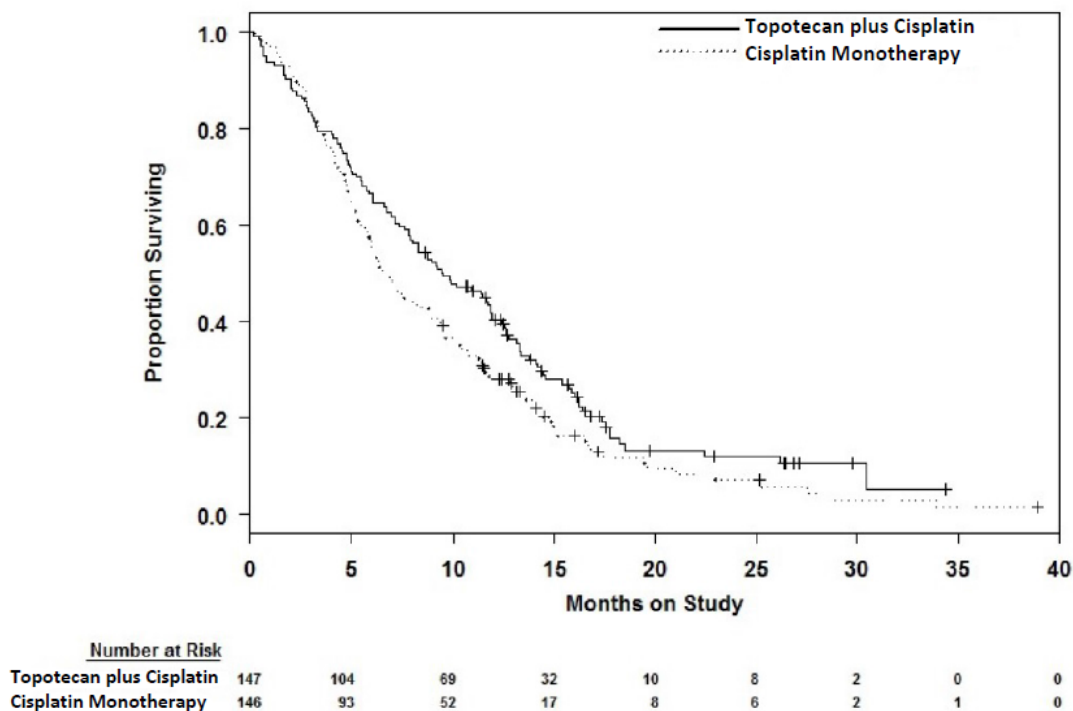
Topotecan was also studied in 3 open-label, non-comparative trials in a total of 319 patients with recurrent or progressive small cell lung cancer after treatment with first-line chemotherapy. In all 3 trials, patients were stratified as either sensitive (responders who then subsequently progressed greater than or equal to 90 days after completion of first-line therapy) or refractory (no response to first-line chemotherapy or who responded to first-line therapy and then progressed within 90 days of completing first-line therapy). Response rates ranged from 11% to 31% for sensitive patients and 2% to 7% for refractory patients. Median time to progression and median survival were similar in all 3 trials and the comparative trial.

### **14.2 Cervical Cancer**

In a comparative trial, 147 eligible women were randomized to topotecan (0.75 mg/m<sup>2</sup>/day IV over 30 minutes × 3 consecutive days starting on Day 1 of a 21-day course) plus cisplatin (50 mg/m<sup>2</sup> on Day 1) and 146 eligible women were randomized to cisplatin (50 mg/m<sup>2</sup> IV on Day 1 of a 21-day course). All patients had histologically confirmed Stage IV-B, recurrent, or persistent carcinoma of the cervix considered not amenable to curative treatment with surgery and/or radiation. Fifty-six percent (56%) of patients treated with topotecan plus cisplatin and 56% of patients treated with cisplatin had received prior cisplatin with or without other agents as first-line chemotherapy.

Median survival of eligible patients receiving topotecan plus cisplatin was 9.4 months (95% CI: 7.9 to 11.9) compared with 6.5 months (95% CI: 5.8 to 8.8) among patients randomized to cisplatin alone with a log rank *P*-value of 0.033 (significance level was 0.044 after adjusting for the interim analysis). The unadjusted hazard ratio for overall survival was 0.76 (95% CI: 0.59 to 0.98).

**Figure 1. Overall Survival Curves Comparing Topotecan plus Cisplatin versus Cisplatin Monotherapy in Cervical Cancer Patients**



## 15 REFERENCES

1. "OSHA Hazardous Drugs." OSHA. <http://www.osha.gov/SLTC/hazardousdrugs/index.html>.

## 16 HOW SUPPLIED/STORAGE AND HANDLING

### 16.1 How Supplied

Topotecan injection is supplied in 4 mg/4 mL (1 mg/mL, topotecan free base equivalent) single-use vials. Each vial contains 4 mL of the sterile, clear, light yellow to greenish solution.

NDC 0703-4714-01 (Package of 1 Single-Use Vial NDC 0703-4714-71)

### 16.2 Storage and Handling

Store the vials protected from light in the original cartons, refrigerated between 2°C and 8°C (36°F and 46°F). Handle and dispose of topotecan injection consistent with recommendations for the handling and disposal of hazardous drugs<sup>1</sup>.

## 17 PATIENT COUNSELING INFORMATION

- **Bone Marrow Suppression**

Inform patients that topotecan decreases blood cell counts such as white blood cells, platelets, and red blood cells. Advise patients to notify their healthcare provider promptly for fever, other signs of infection (e.g., chills, cough, or burning pain on urination), or bleeding. Inform patients that frequent blood tests will be performed while taking topotecan to monitor for the occurrence of bone marrow suppression.

- **Embryofetal Toxicity**

Advise patients to contact their healthcare provider if they become pregnant, or if pregnancy is suspected during treatment with topotecan. Advise females of reproductive potential to use effective contraception during treatment and for 1 month after the last dose of topotecan. Advise males with a female sexual partner of reproductive potential to use effective contraception during treatment and for 3 months after the last dose of topotecan [*see Warnings and Precautions (5.4), Use in Specific Populations (8.1, 8.3)*].

- **Lactation**

Advise nursing mothers to discontinue breastfeeding during treatment with topotecan [*see Use in Specific Populations (8.2)*].

- **Infertility**

Advise male and female patients of the potential risk for impaired fertility and possible family planning options [*see Use in Specific Populations (8.3)*].

- **Asthenia and Fatigue**

Advise patients that topotecan may cause asthenia or fatigue. These symptoms may impair the ability to safely drive or operate machinery.

Teva Pharmaceuticals USA, Inc.  
North Wales, PA 19454