

## HIGHLIGHTS OF PRESCRIBING INFORMATION

These highlights do not include all the information needed to use NEXICLON™ XR (clonidine) Extended-Release Oral Suspension safely and effectively. See full prescribing information for NEXICLON XR (clonidine) Extended-Release Oral Suspension.

**NEXICLON XR (clonidine) Extended-Release Oral Suspension**  
**Initial U.S. Approval: 1974**

### INDICATIONS AND USAGE

NEXICLON XR is a central alpha-adrenergic agonist indicated for:

- Treatment of hypertension (1)

### DOSAGE AND ADMINISTRATION

- Initial dose: 0.17 mg (2 mL) once daily. Elderly patients may benefit from a lower initial dose. Initial dose is recommended to be administered at bedtime. (2.1)
- Maintenance dose: Further increments of 0.09 mg (1 mL) once daily may be made at weekly intervals if necessary until the desired response is achieved. The therapeutic doses most commonly employed have ranged from 0.17 mg to 0.52 mg once daily. (2.2)
- Patients with renal impairment: Uptitrate slowly (2.3)

### DOSAGE FORMS AND STRENGTHS

Extended-Release Oral Suspension: 0.09 mg/mL clonidine base

### CONTRAINDICATIONS

- Known hypersensitivity to clonidine (rash, angioedema)

### WARNINGS AND PRECAUTIONS

- Patients should not discontinue therapy without consulting a physician. Dose reduction should be performed gradually over a 2- to 4-day period to avoid withdrawal symptomatology. Rare instances of hypertensive encephalopathy, cerebrovascular accidents and death have been reported after clonidine withdrawal. (5.1)

- Monitor closely and uptitrate slowly in patients with severe coronary insufficiency, conduction disturbances, recent myocardial infarction, cerebrovascular disease, or chronic renal failure. (5.2)
- Patients who engage in potentially hazardous activities, such as operating machinery or driving, should be advised of a possible sedative effect of clonidine. (5.2)
- In perioperative use, NEXICLON XR may be administered up to 28 hours prior to surgery and resumed the following day. (5.3)

### ADVERSE REACTIONS

There is very little experience with NEXICLON XR in controlled trials. Based on this limited experience, the adverse event profile appears similar with the immediate release clonidine formulation. The most commonly expected adverse reactions are dry mouth, drowsiness, and dizziness. (6)

To report SUSPECTED ADVERSE REACTIONS, contact Tris Pharma, Inc. at 1-732-940-0358 and [www.trispharma.com](http://www.trispharma.com) or FDA at 1-800-FDA-1088 or [www.fda.gov/medwatch](http://www.fda.gov/medwatch).

### DRUG INTERACTIONS

- Sedating drugs: Clonidine may potentiate the CNS-depressive effects of alcohol, barbiturates or other sedating drugs. (7)
- Tricyclic antidepressants: May reduce the hypotensive effect of clonidine, necessitating an increase in clonidine dose. (7)
- Drugs known to affect sinus node function or AV nodal conduction (e.g., digitalis, calcium channel blockers, beta-blockers): Additive effects such as bradycardia and AV block. (7)

### USE IN SPECIFIC POPULATIONS

- Pregnancy Category C (8.1)
- Clonidine is secreted in human milk. (8.2)
- Safety and effectiveness in children have not been established. (8.3)
- Renal impairment: Dose may need adjustment. (2.3)

See 17 for PATIENT COUNSELING INFORMATION.

## FULL PRESCRIBING INFORMATION: CONTENTS\*

1	INDICATIONS AND USAGE
2	DOSAGE AND ADMINISTRATION
2.1	Initial Dose
2.2	Maintenance Dose
2.3	Patients Currently Using Clonidine Hydrochloride Immediate-Release Tablets
2.4	Renal Impairment
3	DOSAGE FORMS AND STRENGTHS
4	CONTRAINDICATIONS
5	WARNINGS AND PRECAUTIONS
5.1	Withdrawal
5.2	General Precautions
5.3	Perioperative Use
6	ADVERSE REACTIONS
6.1	NEXICLON XR Clinical Trial Experience
6.2	Experience with Immediate-Release Clonidine
7	DRUG INTERACTIONS
8	USE IN SPECIFIC POPULATIONS
8.1	Pregnancy
8.2	Nursing Mothers
8.3	Pediatric Use
8.4	Geriatric Use
8.5	Patients with Renal Impairment
10	OVERDOSAGE
11	DESCRIPTION
12	CLINICAL PHARMACOLOGY
12.1	Mechanism of Action
12.2	Pharmacodynamics
12.3	Pharmacokinetics
13	NONCLINICAL TOXICOLOGY
13.1	Carcinogenesis, Mutagenesis, Impairment of Fertility
13.2	Animal Toxicology and/or Pharmacology
14	CLINICAL STUDIES
16	HOW SUPPLIED/STORAGE AND HANDLING
17	PATIENT COUNSELING INFORMATION
17.1	Information for Patients:

\*Sections or subsections omitted from the full prescribing information are not listed

## FULL PRESCRIBING INFORMATION

### 1 INDICATIONS AND USAGE

NEXICLON XR is indicated in the treatment of hypertension. NEXICLON XR may be employed alone or concomitantly with other antihypertensive agents.

### 2 DOSAGE AND ADMINISTRATION

The dose of NEXICLON XR must be adjusted according to the patient's individual blood pressure response. The following is a general guide to its administration in adults.

#### 2.1 Initial Dose

Dosing with NEXICLON XR should be initiated at 0.17 mg (2 mL) once daily. Elderly patients may benefit from a lower initial dose [see *Use in Specific Populations (8.4)*]. Initial dose is recommended to be administered at bedtime.

#### 2.2 Maintenance Dose

Further increments of 0.09 mg (1 mL) once daily may be made at weekly intervals if necessary until the desired response is achieved. The therapeutic doses most commonly employed have ranged from 0.17 mg (2 mL) to 0.52 mg (6 mL) once daily.

NEXICLON XR was studied at doses of 0.17 to 0.52 mg (2 to 6 mL) once daily. Doses higher than 0.52 mg (6 mL) per day were not evaluated and are not recommended.

#### 2.3 Patients Currently Using Clonidine Hydrochloride Immediate-Release Tablets

The recommended dose of NEXICLON XR for patients who are currently taking clonidine hydrochloride immediate-release tablets is provided in the table below.

	NEXICLON XR (clonidine) Extended-Release Oral Suspension	Equivalent dose of Clonidine HCl Immediate-Release Tablets
Initial Dose	0.17 mg (2 mL) once daily	0.1 mg twice daily
Maintenance Dose Titration Increments	0.09 mg (1 mL) once daily	0.05 mg twice daily
Common Doses Used for Blood Pressure Effect	0.17 mg (2 mL) once daily	0.1 mg twice daily
	0.34 mg (4 mL) once daily	0.2 mg twice daily
	0.52 mg (6 mL) once daily	0.3 mg twice daily

#### 2.4 Renal Impairment

Adjust dosage according to the degree of impairment. In patients with end stage kidney disease on maintenance dialysis, start at 0.09 mg (1 mL) per day and up-titrate slowly to minimize dose related adverse events.

Monitor patients carefully, especially for bradycardia, sedation and hypotension. Only a minimal amount of clonidine is removed during routine hemodialysis.

In patients with moderate to severe kidney impairment not undergoing dialysis, initiate clonidine at the same dose as for patients without renal impairment. Up-titrate slowly and monitor for dose-related adverse events.

### 3 DOSAGE FORMS AND STRENGTHS

0.09 mg/mL Extended-Release Oral Suspension

### 4 CONTRAINDICATIONS

NEXICLON XR should not be used in patients with known hypersensitivity to clonidine [see *Warnings and Precautions (5.2)*].

### 5 WARNINGS AND PRECAUTIONS

#### 5.1 Withdrawal

Instruct patients not to discontinue therapy without consulting their physician. Sudden cessation of clonidine treatment has resulted in symptoms such as nervousness, agitation, headache, and tremor accompanied or followed by a rapid rise in blood pressure and elevated catecholamine concentrations in the plasma. The likelihood of such reactions to discontinuation of clonidine therapy appears to be greater after administration of higher doses or continuation of concomitant beta-blocker treatment and special caution is therefore advised in these situations. Rare instances of hypertensive encephalopathy, cerebrovascular accidents and death have been reported after clonidine withdrawal. When discontinuing therapy with

NEXICLON XR, reduce the dose gradually over 2 to 4 days to avoid withdrawal symptoms.

An excessive rise in blood pressure following discontinuation of NEXICLON XR can be reversed by administration of oral clonidine hydrochloride or by intravenous phentolamine. If therapy is to be discontinued in patients receiving a beta-blocker and clonidine concurrently, the beta-blocker should be withdrawn several days before the gradual discontinuation of NEXICLON XR.

**Because children commonly have gastrointestinal illnesses that lead to vomiting, they may be particularly susceptible to hypertensive episodes resulting from abrupt inability to take medication.**

#### 5.2 General Precautions

In patients who have developed localized contact sensitization to a clonidine transdermal system, substitution of oral clonidine therapy may be associated with the development of a generalized skin rash.

In patients who develop an allergic reaction to a clonidine transdermal system, substitution of oral clonidine may also elicit an allergic reaction (including generalized rash, urticaria, or angioedema).

Monitor carefully and up-titrate slowly in patients with severe coronary insufficiency, conduction disturbances, recent myocardial infarction, cerebrovascular disease, or chronic renal failure.

Patients who engage in potentially hazardous activities, such as operating machinery or driving, should be advised of a possible sedative effect of clonidine. The sedative effect may be increased by concomitant use of alcohol, barbiturates, or other sedating drugs.

#### 5.3 Perioperative Use

NEXICLON XR may be administered up to 28 hours prior to surgery and resumed the following day. Blood pressure should be carefully monitored during surgery and additional measures to control blood pressure should be available if required.

### 6 ADVERSE REACTIONS

The following serious adverse reactions are discussed in detail elsewhere in the labeling:

- Withdrawal [see *Warnings and Precautions (5.1)*]
- Allergic reactions [see *Warnings and Precautions (5.2)*]

#### 6.1 NEXICLON XR Clinical Trial Experience

There is very limited experience with NEXICLON XR in controlled trials. Based on this limited experience, the adverse event profile appears similar with to the immediate-release clonidine formulation.

#### 6.2 Experience with Immediate-Release Clonidine

Most adverse reactions are mild and tend to diminish with continued therapy. The most frequent (which also appear to be dose-related) are dry mouth (approximately 40%); drowsiness (approximately 33%); dizziness (approximately 16%); constipation and sedation (approximately 10% each).

The following less frequent adverse reactions have also been reported in patients receiving immediate-release clonidine, but in many cases patients were receiving concomitant medication and a causal relationship has not been established.

**Body as a Whole:** Fatigue, fever, headache, pallor, weakness, and withdrawal syndrome. Also reported were a weakly positive Coombs' test and increased sensitivity to alcohol.

**Cardiovascular:** Bradycardia, congestive heart failure, electrocardiographic abnormalities (i.e., sinus node arrest, junctional bradycardia, high degree AV block and arrhythmias), orthostatic symptoms, palpitations, Raynaud's phenomenon, syncope, and tachycardia. Cases of sinus bradycardia and atrioventricular block have been reported, both with and without the use of concomitant digitalis.

**Central Nervous System (CNS):** Agitation, anxiety, delirium, delusional perception, hallucinations (including visual and auditory), insomnia, mental depression, nervousness, other behavioral changes, paresthesia, restlessness, sleep disorder, and vivid dreams or nightmares.

**Dermatological:** Alopecia, angioneurotic edema, hives, pruritus, rash, and urticaria.

**Gastrointestinal:** Abdominal pain, anorexia, constipation, hepatitis, malaise, mild transient abnormalities in liver function tests, nausea, parotitis, pseudo-obstruction (including colonic pseudo-obstruction), salivary gland pain, and vomiting.

**Genitourinary:** Decreased sexual activity, difficulty in micturition, erectile dysfunction, loss of libido, nocturia, and urinary retention.

**Hematologic:** Thrombocytopenia.

**Metabolic:** Gynecomastia, transient elevation of blood glucose or serum creatine phosphokinase, and weight gain.

**Musculoskeletal:** Leg cramps and muscle or joint pain.

**Oro-otolaryngeal:** Dryness of the nasal mucosa.

**Ophthalmological:** Accommodation disorder, blurred vision, burning of the eyes, decreased lacrimation, and dryness of eyes.

## 7 DRUG INTERACTIONS

No drug interaction studies have been conducted with NEXICLON XR. The following have been reported with other oral formulations of clonidine.

Clonidine may potentiate the CNS-depressive effects of alcohol, barbiturates or other sedating drugs. If a patient receiving clonidine hydrochloride is also taking tricyclic antidepressants, the hypotensive effect of clonidine may be reduced, necessitating an increase in the clonidine dose.

Monitor heart rate in patients receiving clonidine concomitantly with agents known to affect sinus node function or AV nodal conduction, e.g., digitalis, calcium channel blockers, and beta-blockers. Sinus bradycardia resulting in hospitalization and pacemaker insertion has been reported in association with the use of clonidine concomitantly with diltiazem or verapamil.

Amitriptyline in combination with clonidine enhances the manifestation of corneal lesions in rats [see *Nonclinical Toxicology (13.2)*].

**Alcohol:** Based on *in vitro* studies, high concentration of alcohol may increase the rate of release of NEXICLON XR.

## 8 USE IN SPECIFIC POPULATIONS

### 8.1 Pregnancy

Pregnancy Category C. Reproduction studies performed in rabbits at doses up to approximately 3 times the oral maximum recommended daily human dose (MRDHD) of clonidine hydrochloride produced no evidence of a teratogenic or embryotoxic potential in rabbits. In rats, however, doses as low as 1/3 the oral MRDHD (1/15 the MRDHD on a mg/m<sup>2</sup> basis) of clonidine were associated with increased resorptions in a study in which dams were treated continuously from 2 months prior to mating. Increased resorptions were not associated with treatment at the same time or at higher dose levels (up to 3 times the oral MRDHD) when the dams were treated on gestation days 6 to 15. Increases in resorption were observed at much higher dose levels (40 times the oral MRDHD on a mg/kg basis; 4 to 8 times the MRDHD on a mg/m<sup>2</sup> basis) in mice and rats treated on gestation days 1 to 14 (lowest dose employed in the study was 500 mcg/kg).

No adequate, well-controlled studies have been conducted in pregnant women. Because animal reproduction studies are not always predictive of human response, this drug should be used during pregnancy only if clearly needed.

### 8.2 Nursing Mothers

Clonidine is secreted in human milk.

### 8.3 Pediatric Use

Safety and effectiveness in pediatric patients have not been established.

### 8.4 Geriatric Use

Elderly patients may benefit from a lower initial dose [see *Dosage and Administration (2)*].

### 8.5 Patients with Renal Impairment

The initial dosage should be based on the degree of impairment. Monitor patients carefully for hypotension and bradycardia, and titrate to higher doses cautiously. Only a minimal amount of clonidine is removed during routine hemodialysis.

## 10 OVERDOSAGE

Hypertension may develop early and may be followed by hypotension, bradycardia, respiratory depression, hypothermia, drowsiness, decreased or absent reflexes, weakness, irritability and miosis. The frequency of CNS depression may be higher in children than adults. Large overdoses may result in reversible cardiac conduction defects or dysrhythmias, apnea, coma, and seizures. Signs and symptoms of overdose generally occur within 30 minutes to two hours after exposure. As little as 0.1 mg of clonidine has produced signs of toxicity in children.

There is no specific antidote for clonidine overdose. Clonidine overdose may result in the rapid development of CNS depression; therefore, induction of vomiting with ipecac syrup is not recommended. Gastric lavage may be indicated following recent and/or large ingestions. Administration of activated charcoal and/or a cathartic may be beneficial. Supportive care may include atropine sulfate for bradycardia, intravenous fluids and/or vasopressor agents for hypotension and vasodilators for hypertension. Naloxone may be a useful adjunct for the management of clonidine-induced respiratory

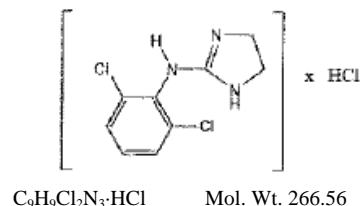
depression, hypotension and/or coma; blood pressure should be monitored since the administration of naloxone has occasionally resulted in paradoxical hypertension. Tolazoline administration has yielded inconsistent results and is not recommended as first-line therapy. Dialysis is not likely to significantly enhance the elimination of clonidine.

The largest overdose reported to date involved a 28-year old male who ingested 100 mg of clonidine hydrochloride powder. This patient developed hypertension followed by hypotension, bradycardia, apnea, hallucinations, semicoma, and premature ventricular contractions. The patient fully recovered after intensive treatment. Plasma clonidine levels were 60 ng/mL after 1 hour, 190 ng/mL after 1.5 hours, 370 ng/mL after 2 hours, and 120 ng/mL after 5.5 and 6.5 hours. In mice and rats, the oral LD<sub>50</sub> of clonidine is 206 and 465 mg/kg, respectively.

## 11 DESCRIPTION

NEXICLON XR (clonidine) Extended-Release Oral Suspension is available for oral administration at a strength of 0.09 mg/mL. The 0.09 mg/mL suspension is equivalent to 0.1 mg/mL of immediate-release clonidine hydrochloride.

Clonidine hydrochloride, a centrally active alpha-adrenergic agonist, is an imidazoline derivative and exists as a mesomeric compound. The chemical name is 2-(2,6-dichlorophenylamino)-2-imidazoline hydrochloride. The following is the structural formula:



Clonidine hydrochloride is an odorless, bitter, white crystalline substance soluble in water and alcohol.

The inactive ingredients are: citric acid anhydrous, flavor, glycerin, high fructose corn syrup, methylparaben, modified food starch, polyvinyl acetate, polysorbate 80, povidone, propylparaben, purified water, sodium polystyrene sulfonate, sucrose, triacetin, and xanthan gum.

## 12 CLINICAL PHARMACOLOGY

### 12.1 Mechanism of Action

Clonidine stimulates alpha-adrenoreceptors in the brain stem. This action results in reduced sympathetic outflow from the central nervous system and in decreases in peripheral resistance, renal vascular resistance, heart rate, and blood pressure. The patient's maximum blood pressure decrease occurred within 6 to 8 hours. Renal blood flow and glomerular filtration rate remain essentially unchanged. Normal postural reflexes are intact; therefore, orthostatic symptoms are mild and infrequent.

### 12.2 Pharmacodynamics

NEXICLON XR was studied in an open-label crossover, force titration, partially randomized trial in patients with mild and moderate essential hypertension who were on two or fewer antihypertensive medications. The trial was designed to compare steady-state exposures between the NEXICLON XR and clonidine immediate-release tablets. There were up- and down-titration phases. There was no washout period between phases or treatments.

Studies with immediate-release clonidine hydrochloride have demonstrated a moderate reduction (15% to 20%) in cardiac output in the supine position with no change in the peripheral resistance. At a 45° tilt, there is a smaller reduction in cardiac output and a decrease of peripheral resistance. During long-term therapy, cardiac output tends to return to control values, while peripheral resistance remains decreased. Slowing of the pulse rate has been observed in most patients given clonidine, but the drug does not alter normal hemodynamic response to exercise.

Tolerance to the antihypertensive effect may develop in some patients, necessitating a re-evaluation of therapy.

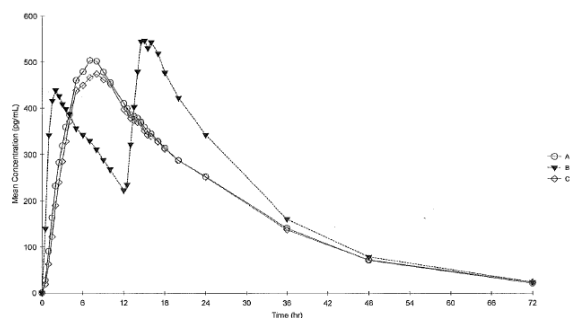
Other studies in patients have provided evidence of a reduction in plasma renin activity and in the excretion of aldosterone and catecholamines. The exact relationship of these pharmacologic actions to the antihypertensive effect of clonidine has not been fully elucidated.

Clonidine acutely stimulates growth hormone release in both children and adults, but does not produce a chronic elevation of growth hormone with long-term use.

### 12.3 Pharmacokinetics

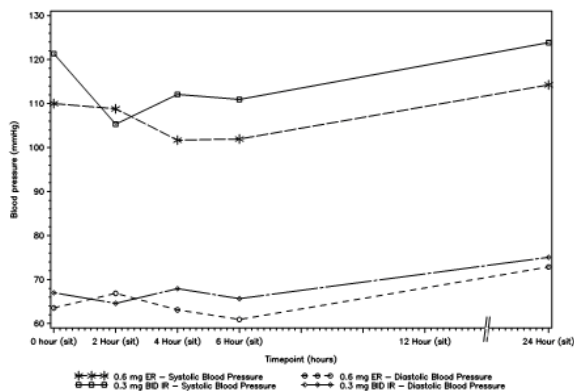
Following single doses of NEXICLON XR Oral Suspension 0.17 mg, clonidine mean (S.D.) peak plasma concentrations of 0.49 (±0.09) ng/mL

occurred at 7.8 ( $\pm$ 1.7) hours. The plasma half-life of clonidine was 13.7 ( $\pm$ 3.0) hours. There was no effect of food on the pharmacokinetic parameters.



A = NEXICLON XR Oral Suspension (0.17 mg QD) Fasted  
B = Clonidine IR Tablet (0.1 mg clonidine hydrochloride Q12h) Fasted  
C = NEXICLON XR Oral Suspension (0.17 mg QD) Fed

In the multi-dose study, mild to moderate hypertensive patients were randomized to ER and BID IR clonidine formulations. The following plot shows the sitting blood pressure values for each treatment group at Day 22.



The half-life may increase up to 41 hours in patients with severe impairment of renal function. Following oral administration of clonidine about 40 to 60% of the absorbed dose is recovered in the urine as unchanged drug in 24 hours. About 50% of the absorbed dose is metabolized in the liver.

## 13 NONCLINICAL TOXICOLOGY

### 13.1 Carcinogenesis, Mutagenesis, Impairment of Fertility

Chronic dietary administration of clonidine was not carcinogenic to rats (132 weeks) or mice (78 weeks) dosed, respectively, at up to 46 or 70 times the maximum recommended daily human dose as mg/kg (9 or 6 times the MRDHD on a mg/m<sup>2</sup> basis). There was no evidence of genotoxicity in the Ames test for mutagenicity or mouse micronucleus test for clastogenicity.

Fertility of male or female rats was unaffected by clonidine doses as high as 150 mcg/kg (approximately 3 times MRDHD). In a separate experiment, fertility of female rats appeared to be affected at dose levels of 500 to 2000 mcg/kg (10 to 40 times the oral MRDHD on a mg/kg basis; 2 to 8 times the MRDHD on a mg/m<sup>2</sup> basis).

### 13.2 Animal Toxicology and/or Pharmacology

In several studies with oral clonidine hydrochloride, a dose-dependent increase in the incidence and severity of spontaneous retinal degeneration was seen in albino rats treated for six months or longer. Tissue distribution studies in dogs and monkeys showed a concentration of clonidine in the choroid.

In view of the retinal degeneration seen in rats, eye examinations were performed during clinical trials in 908 patients before, and periodically after, the start of clonidine therapy. In 353 of these 908 patients, the eye examinations were carried out over periods of 24 months or longer. Except for some dryness of the eyes, no drug-related abnormal ophthalmological findings were recorded and, according to specialized tests such as electroretinography and macular dazzle, retinal function was unchanged.

In combination with amitriptyline, clonidine hydrochloride administration led to the development of corneal lesions in rats within 5 days.

## 14 CLINICAL STUDIES

[see *Clinical Pharmacology* (12.3)].

## 16 HOW SUPPLIED/STORAGE AND HANDLING

NEXICLON XR (clonidine) Extended-Release Oral Suspension 0.09 mg/mL is supplied as light beige to tan viscous suspension in bottles of 4 fl oz (118 mL). NDC 27808-029-01.

Store at 25°C (77°F); excursions permitted from 15° to 30°C (59° to 86°F). [See USP Controlled Room Temperature.]

Dispense in tight, light-resistant container.

Manufactured By: Tris Pharma, Inc.  
Monmouth Junction, NJ 08852

LB8052  
Rev 00  
08/10

## 17 PATIENT COUNSELING INFORMATION

### 17.1 Information for Patients:

Caution patients against interruption of NEXICLON XR therapy without their healthcare provider's advice.

Advise patients who engage in potentially hazardous activities, such as operating machinery or driving, of a possible sedative effect of clonidine. The sedative effect may be increased by concomitant use of alcohol, barbiturates, or other sedating drugs.

### 17.2 Directions for using the enclosed adapter and syringe:

- Shake bottle well with vigorous back and forth motion for 5 to 10 seconds and then insert adapter into the neck of bottle.
- Insert syringe tip into the adapter and invert the bottle.
- Draw out amount of suspension as prescribed by doctor or physician. Dispense directly into mouth.