

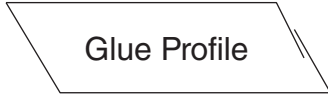


090177e189bccb87\Final\Final On: 28-Sep-2016 21:17

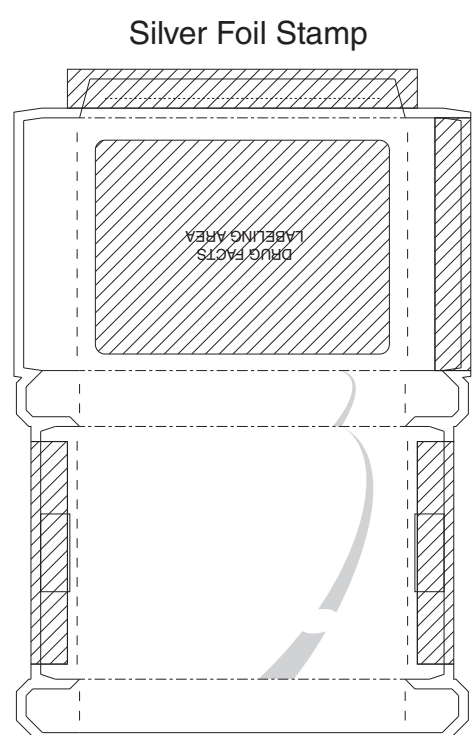
PRODUCTION

(NOT COLOR ACCURATE)

Job Information	Color Legend



- Cut: _____
- Crease: - - - - -
- Cut Crease: - - - - -
- Perf: - - - - -
- Glue Assist: - - - - -
- Non Varnish:





128 HD CODE AREA
 Code 128 = 060866

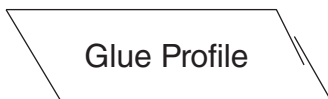
128 HD CODE AREA
 Code 128 = 060866

090177e18ad99885\Final\Final On: 15-Dec-2016 04:11

PRODUCTION

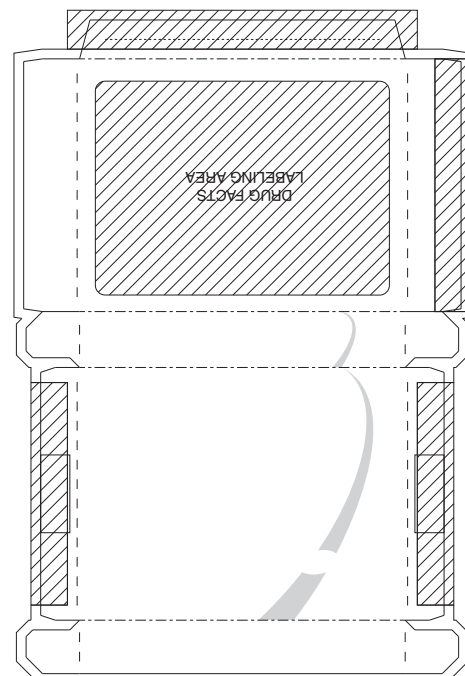
(NOT COLOR ACCURATE)

Job Information	Color Legend



- Cut: _____
- Crease: - - - - -
- Cut Crease: - - - - -
- Perf: - - - - -
- Glue Assist: - - - - -
- Non Varnish:

Silver Foil Stamp

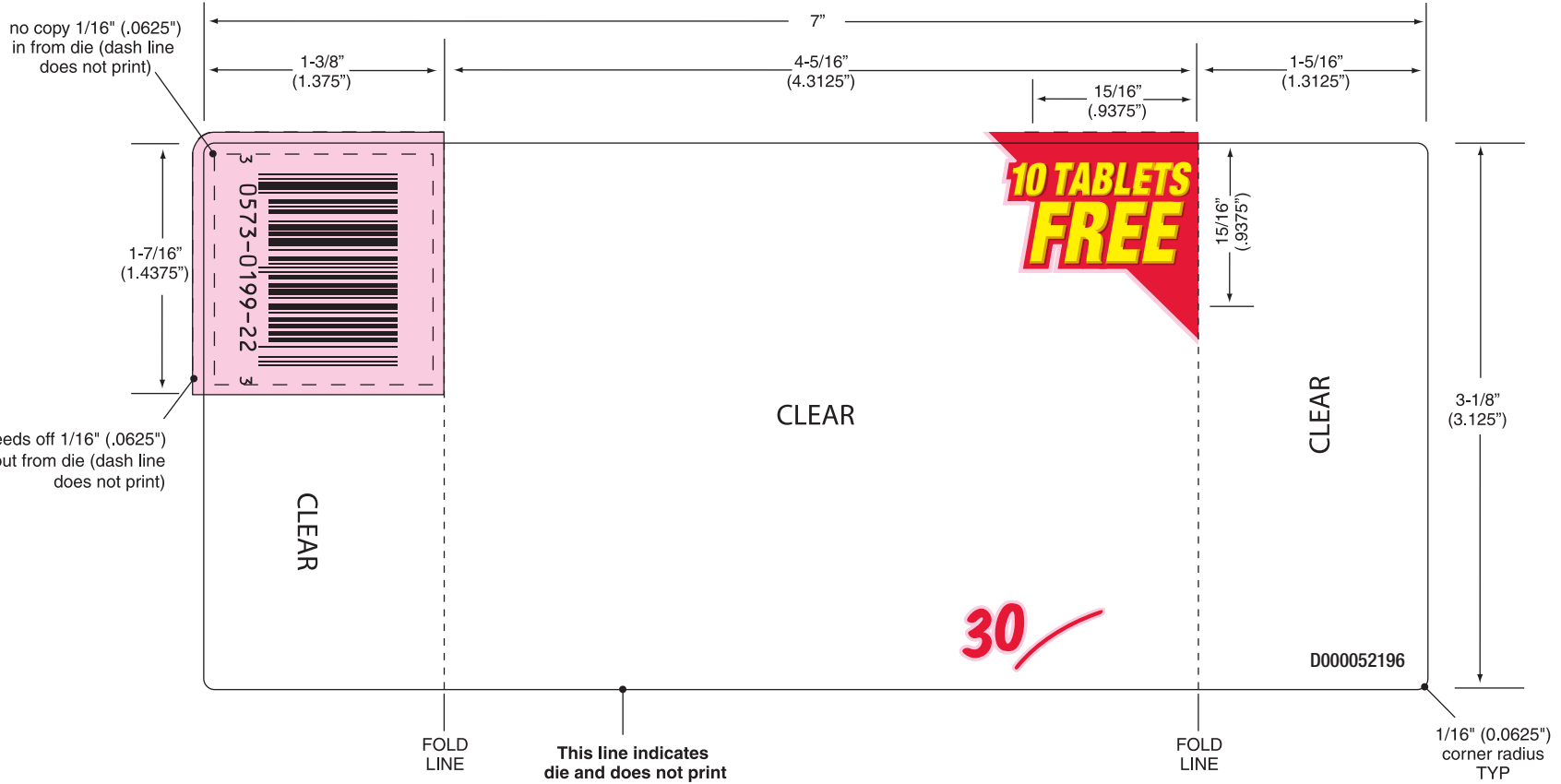


Pfizer Consumer Healthcare

Advil Sinus Congestion & Pain 20+10CT Bonus Pack Label D000052196



090177e18ad99888\Final\Final On: 15-Dec-2016 04:12



(b) (4)

3/16" x 3/16" DATA MATRIX CODE (ECC200),
PRINTED IN BLACK OR DARK BLUE ON
UNPRINTED WHITE BACKGROUND
DATA MATRIX CODE=080421

PANEL
1

READ AND KEEP CARTON FOR COMPLETE WARNINGS AND INFORMATION

LIFT HERE
For More Drug Facts

<p>Drug Facts</p> <p>Active ingredients (in each tablet)</p> <p>Ibuprofen 200 mg (NSAID)*Pain reliever/fever reducer Phenylephrine HCl 10 mgNasal decongestant *nonsteroidal anti-inflammatory drug</p> <p>Purposes</p> <p>■ temporarily relieves these symptoms associated with the common cold or flu: ■ headache ■ fever ■ sinus pressure ■ nasal congestion ■ minor body aches and pains ■ reduces swelling of the nasal passages ■ temporarily restores freer breathing through the nose</p> <p>Uses</p> <p>■ temporarily restores freer breathing through the nose</p> <p>Warnings</p> <p>Allergy alert: Ibuprofen may cause a severe allergic reaction, especially in people allergic to aspirin.</p>	<p>Drug Facts (continued)</p> <p>Symptoms may include:</p> <ul style="list-style-type: none"> ■ hives ■ asthma (wheezing) ■ skin reddening ■ blisters ■ facial swelling ■ shock ■ rash <p>If an allergic reaction occurs, stop use and seek medical help right away.</p> <p>Stomach bleeding warning: This product contains an NSAID, which may cause severe stomach bleeding. The chance is higher if you:</p> <ul style="list-style-type: none"> ■ are age 60 or older ■ have had stomach ulcers or bleeding problems ■ take a blood thinning (anticoagulant) or steroid drug ■ take other drugs containing prescription or nonprescription NSAIDs (aspirin, ibuprofen, naproxen, or others) ■ have 3 or more alcoholic drinks every day while using this product ■ take more or for a longer time than directed
--	---

PAA080421

NOTE: BLACK RULE MUST PRINT.

PANEL
2

<p>Drug Facts (continued)</p> <p>Heart attack and stroke warning: NSAIDs, except aspirin, increase the risk of heart attack, heart failure, and stroke. These can be fatal. The risk is higher if you use more than directed or for longer than directed.</p> <p>Do not use</p> <ul style="list-style-type: none"> ■ in children under 12 years of age because this product contains too much medication for children under this age ■ if you have ever had an allergic reaction to any other pain reliever/fever reducer ■ right before or after heart surgery ■ if you are now taking a prescription monoamine oxidase inhibitor (MAOI) (certain drugs for depression, psychiatric, or emotional conditions, or Parkinson's disease), or for 2 weeks after stopping the MAOI drug. If you do not know if your prescription drug contains an MAOI, ask a doctor or pharmacist before taking this product <p>Ask a doctor before use if</p> <ul style="list-style-type: none"> ■ stomach bleeding warning applies to you ■ you have problems or serious side effects from taking pain relievers or fever reducers ■ you have a history of stomach problems, such as heartburn ■ you have high blood pressure, heart disease, liver cirrhosis, kidney disease, asthma, thyroid disease, diabetes, have trouble urinating due to an enlarged prostate gland, or had a stroke ■ you are taking a diuretic 	<p>Drug Facts (continued)</p> <p>Ask a doctor or pharmacist before use if you are</p> <ul style="list-style-type: none"> ■ under a doctor's care for any serious condition ■ taking any other product that contains phenylephrine or any other nasal decongestant ■ taking aspirin for heart attack or stroke, because ibuprofen may decrease this benefit of aspirin ■ taking any other drug <p>When using this product</p> <ul style="list-style-type: none"> ■ take with food or milk if stomach upset occurs <p>Stop use and ask a doctor if</p> <ul style="list-style-type: none"> ■ you experience any of the following signs of stomach bleeding: ■ feel faint ■ vomit blood ■ have bloody or black stools ■ have stomach pain that does not get better ■ you have symptoms of heart problems or stroke: ■ chest pain ■ trouble breathing ■ weakness in one part or side of body ■ slurred speech ■ leg swelling ■ pain gets worse or lasts more than 7 days ■ fever gets worse or lasts more than 3 days ■ nasal congestion lasts for more than 7 days ■ symptoms continue or get worse
---	--

HINGE AREA

BASE
PANEL

<p>Drug Facts (continued)</p> <ul style="list-style-type: none"> ■ redness or swelling is present in the painful area ■ you get nervous, dizzy, or sleepless ■ any new symptoms appear <p>If pregnant or breast-feeding, ask a health professional before use. It is especially important not to use ibuprofen during the last 3 months of pregnancy unless definitely directed to do so by a doctor because it may cause problems in the unborn child or complications during delivery.</p> <p>Keep out of reach of children. In case of overdose, get medical help or contact a Poison Control Center right away.</p> <p>Directions</p> <ul style="list-style-type: none"> ■ do not take more than directed ■ adults and children 12 years of age and over: ■ take 1 tablet every 4 hours while symptoms persist. ■ do not use more than 6 tablets in any 24-hour period unless directed by a doctor ■ children under 12 years of age: do not use because this product contains too much medication for children under this age <p>Other information</p> <ul style="list-style-type: none"> ■ store at 20-25°C (68-77°F). Avoid excessive heat above 40°C (104°F). ■ read all warnings and directions before use. Keep carton. 	<p>Drug Facts (continued)</p> <p>Inactive ingredients acesulfame potassium, artificial flavor, carnauba wax, colloidal silicon dioxide, corn starch, croscarmellose sodium, glycerin, hypromellose, lactic acid, lecithin, maltodextrin, medium-chain triglycerides, microcrystalline cellulose, pharmaceutical ink, polydextrose, polyvinyl alcohol, pregelatinized starch, propyl gallate, sodium lauryl sulfate, stearic acid, sucralose, synthetic iron oxide, talc, titanium dioxide, triacetin, xanthan gum</p> <p>Questions or comments? Call weekdays from 9 AM to 5 PM EST toll free at 1-800-88-ADVL</p>
---	---

HINGE AREA

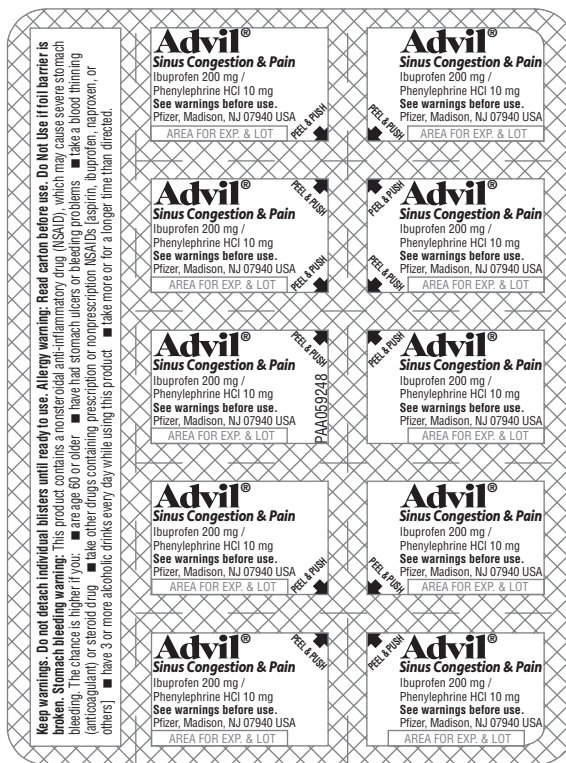
PRODUCTION

(NOT COLOR ACCURATE)

Job Information	Color Legend
	(b) (4)

DRUG FACTS TEXT DEFINED	TYPE SIZE
• DRUG FACTS TITLE	9 pt
• DRUG FACTS CONTINUED	8 pt
• HEADINGS	8 pt
• SUBHEADINGS/BODY TEXT	6 pt
• LEADING	6.5 pt
• # OF CHARACTERS PER INCH	<39
• BULLETS	5 pt
• SPACE BEFORE BULLET	2 ems
• BARLINES, HAIRLINES	1.5 pt, .5 pt
• SPACE BETWEEN HAIRLINES AND BOX END	2 spaces

090177e18ad9b3d3\Final\Final On: 15-Dec-2016 04:09

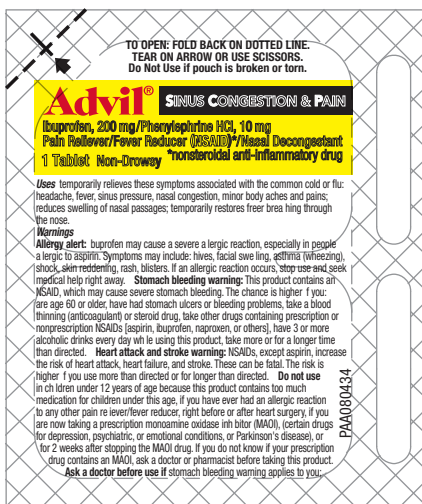


PRODUCTION

(NOT COLOR ACCURATE)

Job Information	Color Legend
(b) (4)	

DRUG FACTS TEXT DEFINED	TYPE SIZE
• HEADINGS	N/A
• SUBHEADINGS/BODY TEXT	5.5 pt
• LEADING	6 pt
• BULLETS	4.5 pt
• SPACE BEFORE BULLET	2 ems
• WARNING BOX LINE, HAIRLINES	N/A



FRONT

128 Code = **080434**

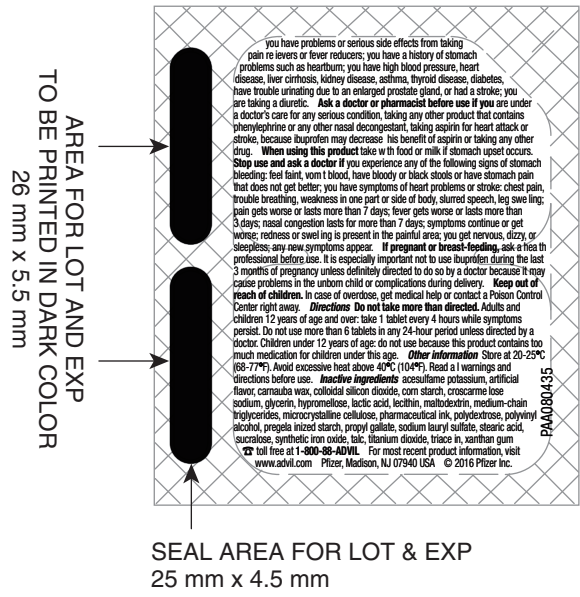
090177e189bcc6e3\Final\Final On: 28-Sep-2016 21:19

PRODUCTION

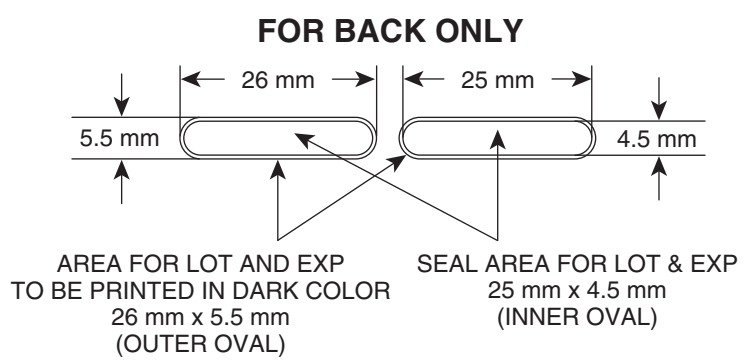
(NOT COLOR ACCURATE)

Job Information	Color Legend
(b) (4)	

DRUG FACTS TEXT DEFINED	TYPE SIZE
• HEADINGS	4.5 pt
• SUBHEADINGS/BODY TEXT	4.5 pt
• LEADING	4.5 pt
• BULLETS	N/A
• SPACE BEFORE BULLET	N/A
• WARNING BOX LINE, HAIRLINES	N/A



BACK 128 Code = 080435



090177e189bcc6e5\Final\Final On: 28-Sep-2016 21:17

PRODUCTION (NOT COLOR ACCURATE)

Job Information	Color Legend
	(b) (4)

DRUG FACTS TEXT DEFINED	TYPE SIZE
• HEADINGS	4.5 pt
• SUBHEADINGS/BODY TEXT	4.5 pt
• LEADING	4.5 pt
• BULLETS	N/A
• SPACE BEFORE BULLET	N/A
• WARNING BOX LINE, HAIRLINES	N/A

(b) (4)

PFIZER
ASSEMBLY INSTRUCTIONS
ADVIL SINUS CONG & PAIN 20 CT -
Y ĐÃ F Ồ
Component: D00005158
0199F1A

D00005158



(b) (4)

090177e18ad99886\Final\Final On: 15-Dec-2016 04:11

(b) (4)

PFIZER
ASSEMBLY INSTRUCTIONS
ADVIL SINUS CONG & PAIN 20 CT -
ONE PILL DOSAGE LABEL (OPEN STOCK)
Component: D000051585
019921A

D000051585



090177e18ad99889\Final\Final On: 15-Dec-2016 04:12

(b) (4)

This is a representation of an electronic record that was signed electronically and this page is the manifestation of the electronic signature.

/s/

VALERIE S PRATT
03/24/2017