

CENTER FOR DRUG EVALUATION AND RESEARCH

APPLICATION NUMBER:
ANDA 078593

LABELING

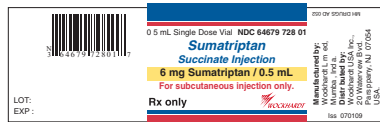
Labels and Labeling Approved 2/6/2009

Sumatriptan Succinate Injection 6 mg/0.5 mL

(5x 0.5 mL) Single-Dose Vials Carton



Sumatriptan Succinate Injection 6 mg/0.5 mL Single Dose Vial



Size: 50 mm x 15 mm

Information for the Patient

Sumatriptan Succinate Injection

Rx only

Read this leaflet carefully before you start to take sumatriptan succinate injection. Keep the leaflet for reference because it gives you a summary of important information about sumatriptan succinate injection.

Read the leaflet that comes with each refill of your prescription because there may be new information.

This leaflet does not have all the information about sumatriptan succinate injection. Ask your healthcare provider for more information or advice.

What is Sumatriptan Succinate Injection?

Sumatriptan succinate injection is a 5-HT₁ agonist. It is also called a “triptan.” You should use it only if you have a prescription.

Sumatriptan succinate injection is used to relieve your migraine or cluster headache. Sumatriptan succinate injection is not used to prevent attacks or reduce the number of attacks you have. Use sumatriptan succinate injection only to treat an actual migraine or cluster headache attack.

The decision to use sumatriptan succinate injection is one that you and your healthcare provider should make together, taking into account your personal needs and health.

Talk to your healthcare provider before taking sumatriptan succinate injection

1. Risk factors for heart disease:

Tell your healthcare provider if you have risk factors for heart disease such as:

- high blood pressure,
- high cholesterol,
- obesity,
- diabetes,
- smoking,
- strong family history of heart disease,
- you are postmenopausal, or
- you are a male over 40 years of age.

If you do have risk factors for heart disease, your healthcare provider should check you for heart disease to see if sumatriptan succinate is right for you.

Although most of the people who have taken sumatriptan succinate have not had any serious side effects, some have had serious heart problems. Deaths have been reported, but these were rare considering the extensive worldwide use of sumatriptan succinate. Usually, serious problems happened in people with known heart diseases. It was not clear whether sumatriptan succinate had anything to do with these deaths.

2. Important questions to consider before taking sumatriptan succinate injection

If the answer to any of the following questions is **YES** or if you do not know the answer, then please talk with your healthcare provider before you use sumatriptan succinate injection.

- Are you pregnant? Do you think you might be pregnant? Are you trying to become pregnant? Are you using inadequate contraception? Are you breastfeeding?
- Do you have any chest pain, heart disease, shortness of breath, or irregular heartbeats? Have you had a heart attack?
- Do you have risk factors for heart disease (such as high blood pressure, high cholesterol, obesity, diabetes, smoking, strong family history of heart disease, or you are postmenopausal or a male over 40)?
- Have you had a stroke, transient ischemic attacks (TIAs), or Raynaud syndrome?
- Do you have high blood pressure?
- Have you ever had to stop taking this or any other medicine because of an allergy or other problems?
- Are you taking any other migraine medicines, including other 5-HT₁ agonists (triptans) or any other medicines containing ergotamine, dihydroergotamine, or methysergide?
- Are you taking any medicine for depression or other disorders such as monoamine oxidase inhibitors, selective serotonin reuptake inhibitors (SSRIs), or serotonin norepinephrine reuptake inhibitors (SNRIs)? Common SSRIs are citalopram HBr (CELEXA[®]), escitalopram oxalate (LEXAPRO[®]), paroxetine (PAXIL[®]), fluoxetine (PROZAC[®]/SARAFEM[®]), olanzapine/fluoxetine (SYMBYAX[®]), sertraline (ZOLOFT[®]), and fluvoxamine. Common SNRIs are duloxetine (CYMBALTA[®]) and venlafaxine (EFFEXOR[®]).*
- Have you had, or do you have, any disease of the liver or kidney?

- Have you had, or do you have, epilepsy or seizures?
- Is this headache different from your usual migraine attacks?

Remember, if you answered **YES** to any of the above questions, then talk with your healthcare provider about it.

Important points about sumatriptan succinate injection

1. The use of sumatriptan succinate injection during pregnancy

Does not use sumatriptan succinate injection if you are pregnant, think you might be pregnant, are trying to become pregnant, or are not using adequate contraception unless you have talked with your healthcare provider about this.

2. How to use sumatriptan succinate injection

For adults, the usual dose is a single injection given just below the skin. You should give an injection as soon as the symptoms of your migraine start, but it may be given at any time during an attack.

You may give a second injection if your migraine symptoms come back. If your symptoms do not get better after the first injection, do not give a second injection for the same attack without first talking with your healthcare provider. Do not give more than two 6 mg doses in any 24-hour period. Allow at least 1 hour between each dose.

3. What to do if you take an overdose

If you have taken more medicine than has been prescribed for you, contact either your healthcare provider, hospital emergency department, or nearest poison control center immediately.

4. How to store your medicine

Keep your medicine in a safe place where children cannot reach it. It may be harmful to children.

Store your medicine away from heat and light. Do not store at temperatures above 25°C (77°F).

If your medicine has expired (the expiration date is printed on the container), throw it away as instructed.

If your healthcare provider decides to stop your treatment, do not keep any leftover medicine unless your healthcare provider tells you to. Throw away your medicine as instructed.

Some possible side effects of sumatriptan succinate injection

1. Some patients feel pain or tightness in the chest or throat when using sumatriptan succinate injection. If this happens to you, then discuss it with your healthcare provider before using any more sumatriptan succinate injection. If the chest pain is severe or does not go away, call your healthcare provider right away.
2. Call your healthcare provider right away if you have sudden and/or severe abdominal pain following sumatriptan succinate injection.
3. Some people may have a reaction called serotonin syndrome when they use certain types of antidepressants, SSRIs or SNRIs, while taking sumatriptan succinate injection. Symptoms may include confusion, hallucinations, fast heartbeat, feeling faint, fever, sweating, muscle spasm, difficulty walking, and/or diarrhea. Call your doctor immediately if you have any of these symptoms after taking sumatriptan succinate injection.
4. Shortness of breath; wheeziness; heart throbbing; swelling of eyelids, face, or lips; or a skin rash, skin lumps, or hives happens rarely. If it happens to you, then tell your healthcare provider right away. Do not take any more sumatriptan succinate injection unless your healthcare provider tells you to.
5. Some people may feel tingling, heat, flushing (redness of face lasting a short time), heaviness, or pressure after using sumatriptan succinate injection. A few people may feel drowsy, dizzy, tired, or sick. If you have any of these symptoms, tell your healthcare provider at your next visit.
6. You may have pain or redness at the site of injection, but this usually lasts less than an hour.
7. If you feel unwell in any other way or have any symptoms that you do not understand, you should contact your healthcare provider right away.

*The brands listed are trademarks of their respective owners and are not trademarks of Wockhardt. The makers of these brands are not affiliated with and do not endorse Wockhardt or its products.

Manufactured by:

Wockhardt Limited,
Mumbai, INDIA.

Distributed by:

Wockhardt USA Inc.,
20 Waterview Blvd.
Parsippany, NJ 07054
USA.

Iss.060109

PRESCRIBING INFORMATION

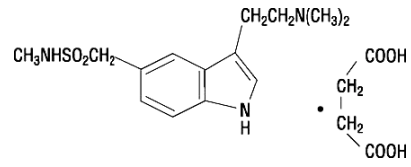
Sumatriptan Succinate Injection

For Subcutaneous Use Only.

Rx only

DESCRIPTION

Sumatriptan succinate injection is a selective 5-hydroxytryptamine₁ receptor subtype agonist. Sumatriptan succinate is chemically designated as 3-(2-(dimethylamino)ethyl)-N-methyl-indole-5-methanesulfonamide succinate (1:1), and it has the following structure:



The molecular formula is C₁₆H₁₇N₂O₃S•C₄H₄O₄, representing a molecular weight of 413.5.

Sumatriptan succinate is a white or almost off-white powder that is readily soluble in water and in saline. Sumatriptan succinate injection is a clear, colorless to pale yellow, sterile, nonytrogenic solution for subcutaneous injection. Each 0.5 mL of sumatriptan succinate injection 12 mg/mL solution contains 6 mg of sumatriptan (base) as the succinate salt and 3.5 mg of sodium chloride, USP in Water for Injection, USP.

The pH range of solution is approximately 4.2 to 5.3. The osmolality of injection is in between 270 to 330 mOsmol.

CLINICAL PHARMACOLOGY

Mechanism of Action

Sumatriptan has been demonstrated to be a selective agonist for a vascular 5-hydroxytryptamine₁ receptor subtype (probably a member of the 5-HT_{1D} family) with no significant affinity (as measured using standard radioligand binding assays) or pharmacological activity at 5-HT₂, 5-HT₃ receptor subtypes or at alpha₁, alpha₂, or beta-adrenergic, dopamine₁, dopamine₂, muscarinic, or benzodiazepine receptors.

The vascular 5-HT₁ receptor subtype to which sumatriptan binds selectively, and through which it presumably exerts its antimigrainous effect, has been shown to be present on cranial arteries in both dog and primate, on the human basilar artery, and in the vasculature of the isolated dura mater of humans. In these tissues, sumatriptan activates this receptor to cause vasoconstriction, an action in humans correlating with the relief of migraine and cluster headache. In the anesthetized dog, sumatriptan selectively reduces the carotid arterial blood flow with little or no effect on arterial blood pressure or total peripheral resistance. In the cat, sumatriptan selectively constricts the carotid arteriovenous anastomoses while having little effect on blood flow or resistance in cerebral or extracerebral tissues.

Corneal Opacities

Dogs receiving oral sumatriptan developed corneal opacities and defects in the corneal epithelium. Corneal opacities were seen at the lowest dosage tested, 2 mg/kg/day, and were present after 1 month of treatment. Defects in the corneal epithelium were noted in a 60-week study. Earlier examinations for these toxicities were not conducted and no-effect doses were not established; however, the relative exposure at the lowest dose tested was approximately 5 times the human exposure after a 100-mg oral dose or 3 times the human exposure after a 6 mg subcutaneous dose.

Melanin Binding

In rats with a single subcutaneous dose (0.5 mg/kg) of radiolabeled sumatriptan, the elimination half-life of radioactivity from the eye was 15 days, suggesting that sumatriptan and its metabolites bind to the melanin of the eye. The clinical significance of this binding is unknown.

Pharmacokinetics

Pharmacokinetic parameters following a 6 mg subcutaneous injection into the deltoid area of the arm in 9 males (mean age, 33 years; mean weight, 77 kg) were systemic clearance: 1,194 ± 149 mL/min (mean ± S.D.), distribution half-life: 15 ± 2 minutes, terminal half-life: 115 ± 19 minutes, and volume of distribution central compartment: 50 ± 8 liters. Of this dose, 22% ± 4% was excreted in the urine as unchanged sumatriptan and 38% ± 7% as the indole acetic acid metabolite.

After a single 6 mg subcutaneous manual injection into the deltoid area of the arm in 18 healthy males (age, 24 ± 6 years; weight, 70 kg), the maximum serum concentration (C_{max}) was (mean ± standard deviation) 74 ± 15 ng/mL and the time to peak concentration (T_{max}) was 12 minutes after injection (range, 5 to 20 minutes). In this study, the same dose injected subcutaneously in the thigh gave a C_{max} of 61 ± 15 ng/mL, by manual injection versus 52 ± 15 ng/mL, by autoinjector techniques. The T_{max} or amount absorbed was not significantly altered by either the site or technique of injection.

The bioavailability of sumatriptan via subcutaneous site injection to 18 healthy male subjects was 97% ± 16% of that obtained following intravenous injection. Protein binding, determined by equilibrium dialysis over the concentration range of 10 to 1,000 ng/mL, is low, approximately 14% to 21%. The effect of sumatriptan on the protein binding of other drugs has not been evaluated.

Special Populations

Renal Impairment

The effect of renal impairment on the pharmacokinetics of sumatriptan has not been examined, but little clinical effect would be expected as sumatriptan is largely metabolized to an inactive substance.

Hepatic Impairment

The effect of hepatic disease on the pharmacokinetics of subcutaneously and orally administered sumatriptan has been evaluated. There were no statistically significant differences in the pharmacokinetics of subcutaneously administered sumatriptan in hepatically impaired patients compared to healthy controls. However, the liver plays an important role in the presystemic clearance of orally administered sumatriptan. Accordingly, the bioavailability of sumatriptan following oral administration may be markedly increased in patients with liver disease. In 1 small study of hepatically impaired patients (N = 8) matched for sex, age, and weight with healthy subjects, the hepatically impaired patients had an approximately 70% increase in AUC and C_{max} and a T_{max} 40 minutes earlier compared to the healthy subjects.

Age

The pharmacokinetics of sumatriptan in the elderly (mean age, 72 years, 2 males and 4 females) and in patients with migraine (mean age, 38 years, 25 males and 155 females) were similar to that in healthy male subjects (mean age, 30 years) (see PRECAUTIONS: Geriatric Use).

Race

The systemic clearance and C_{max} of sumatriptan were similar in black (n = 34) and Caucasian (n = 38) healthy male subjects.

Drug Interactions

Monoamine Oxidase Inhibitors

In vitro studies with human microsomes suggest that sumatriptan is metabolized by monoamine oxidase (MAO), predominantly the A isoenzyme. In a study of 14 healthy females, pretreatment with MAO-A inhibitor decreased the clearance of sumatriptan. Under the conditions of this experiment, the result was a 2-fold increase in the area under the sumatriptan plasma concentration x time curve (AUC), corresponding to a 40% increase in elimination half-life. No significant effect was seen with an MAO-B inhibitor.

Pharmacodynamics

Typical Physiologic Responses

Blood Pressure: (see WARNINGS: Increase in Blood Pressure)

Peripheral (small) Arteries

In healthy volunteers (N = 18), a study evaluating the effects of sumatriptan on peripheral (small vessel) arterial reactivity failed to detect a clinically significant increase in peripheral resistance.

Heart Rate

Transient increases in blood pressure observed in some patients in clinical studies carried out during sumatriptan's development as a treatment for migraine were not accompanied by any clinically significant changes in heart rate.

Respiratory Rate

Experience gained during the clinical development of sumatriptan as a treatment for migraine failed to detect an effect of the drug on respiratory rate.

CLINICAL TRIALS

Migraine

In US controlled clinical trials enrolling more than 1,000 patients during migraine attacks who were experiencing moderate or severe pain and 1 or more of the symptoms enumerated in Table 2, onset of relief began as early as 10 minutes following a 6 mg sumatriptan succinate injection. Smaller doses of sumatriptan may also prove effective, although the proportion of patients obtaining adequate relief is decreased and the latency to that relief is greater.

In 1 well-controlled study where placebo (n = 62) was compared to 6 different doses of sumatriptan succinate injection (n = 30 each group) in a single-attack, parallel-group design, the dose response relationship was found to be as shown in Table 1.

Table 1. Dose Response Relationship for Efficacy

| Sumatriptan succinate Injection Dose (mg) | % Patients With Relief [†] at 10 Minutes | % Patients With Relief [†] at 30 Minutes | % Patients With Relief [†] at 1 Hour | % Patients With Relief [†] at 2 Hours | Adverse Events Incidence (%) |
|---|---|---|---|--|------------------------------|
| Placebo | 5 | 15 | 24 | 21 | 55 |
| 1 | 10 | 40 | 43 | 40 | 63 |
| 2 | 7 | 23 | 57 | 43 | 63 |
| 3 | 17 | 47 | 57 | 60 | 77 |
| 4 | 13 | 37 | 50 | 57 | 80 |
| 6 | 10 | 63 | 73 | 70 | 83 |
| 8 | 23 | 57 | 80 | 83 | 93 |

[†] Relief is defined as the reduction of moderate or severe pain to no or mild pain after dosing without use of rescue medication.

In 2 US well-controlled clinical trials in 1,104 migraine patients with moderate or severe migraine pain, the onset of relief was rapid (less than 10 minutes) with sumatriptan succinate injection 6 mg. Headache relief, as evidenced by a reduction in pain from severe or moderately severe to mild or no headache, was achieved in 70% of the patients within 1 hour of a single 6 mg subcutaneous dose of sumatriptan succinate injection. Headache relief was achieved in approximately 82% of patients within 2 hours, and 65% of all patients were pain free within 2 hours.

Table 2 shows the 1- and 2-hour efficacy results for sumatriptan succinate injection 6 mg.

Table 2. Efficacy Data From US Phase III Trials

| 1-Hour Data | Study 1 | | Study 2 | |
|---|----------------------|---|----------------------|---|
| | Placebo (n = 190) | Sumatriptan succinate Injection 6 mg (n = 384) | Placebo (n = 180) | Sumatriptan succinate Injection 6 mg (n = 350) |
| Patients with pain relief (grade 0/1) | 18% | 70%* | 26% | 70%* |
| Patients with no pain | 5% | 48%* | 13% | 49%* |
| Patients without nausea | 48% | 73%* | 50% | 73%* |
| Patients without photophobia | 23% | 56%* | 25% | 58%* |
| Patients with little or no clinical disability [†] | 34% | 76%* | 34% | 76%* |
| 2-Hour Data | Study 1 | | Study 2 | |
| | Placebo [†] | Sumatriptan succinate Injection 6 mg [‡] | Placebo [†] | Sumatriptan succinate Injection 6 mg [‡] |
| Patients with pain relief (grade 0/1) | 31% | 81%* | 39% | 82%* |
| Patients with no pain | 11% | 63%* | 19% | 65%* |
| Patients without nausea | 56% | 82%* | 63% | 81%* |
| Patients without photophobia | 31% | 72%* | 35% | 71%* |
| Patients with little or no clinical disability [†] | 42% | 85%* | 49% | 84%* |

* p<0.05 versus placebo.

[†] A successful outcome in terms of clinical disability was defined prospectively as ability to work mildly impaired or ability to work and function normally.

[‡] Includes patients that may have received an additional placebo injection 1 hour after the initial injection.

§ Includes patients that may have received an additional 6 mg of sumatriptan succinate injection 1 hour after the initial injection.

Sumatriptan succinate injection also relieved photophobia, phonophobia (sound sensitivity), nausea, and vomiting associated with migraine attacks. Similar efficacy was seen when patients self-administered sumatriptan succinate injection using an autoinjector.

The efficacy of sumatriptan succinate injection is unaffected by whether or not migraine is associated with aura, duration of attack, gender or age of the patient, or concomitant use of common migraine prophylactic drugs (e.g., beta-blockers).

Cluster Headache

The efficacy of sumatriptan succinate injection in the acute treatment of cluster headache was demonstrated in 2 randomized, double-blind, placebo-controlled, 2-period crossover trials. Patients age 21 to 65 were enrolled and were instructed to treat a moderate to very severe headache within 10 minutes of onset. Headache relief was defined as a reduction in headache severity to mild or no pain. In both trials, the proportion of individuals gaining relief at 10 or 15 minutes was significantly greater among patients receiving 6 mg of sumatriptan succinate injection compared to those who received placebo (see Table 3). One study evaluated a 12-mg dose; there was no statistically significant difference in outcome between patients randomized to the 6 mg and 12-mg doses.

Table 3. Efficacy Data From the Pivotal Cluster Headache Studies

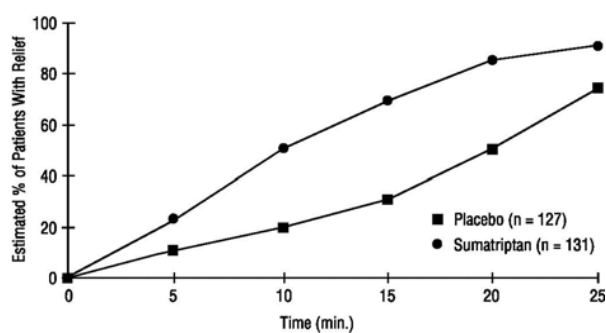
| | Study 1 | | Study 2 | |
|-------------------------------------|------------------|---|------------------|---|
| | Placebo (n = 39) | Sumatriptan succinate Injection 6 mg (n = 39) | Placebo (n = 88) | Sumatriptan succinate Injection 6 mg (n = 92) |
| Patients with pain relief (no/mild) | | | | |
| 5 minutes postinjection | 8% | 21% | 7% | 23% |
| 10 minutes postinjection | 10% | 49% | 25% | 49% |
| 15 minutes postinjection | 26% | 74% | 35% | 75% |

[†]p<0.05.

(n = Number of headaches treated.)

The Kaplan-Meier (product limit) Survivorship Plot (Figure 1) provides an estimate of the cumulative probability of a patient with a cluster headache obtaining relief after being treated with either sumatriptan or placebo.

Figure 1. Time to Relief From Time of Injection*



*Patients taking rescue medication were censored at 15 minutes.

The plot was constructed with data from patients who either experienced relief or did not receive (request) rescue medication within a period of 2 hours following treatment. As a consequence, the data in the plot are derived from only a subset of the 258 headache treated (rescue medication was required in 52 of the 127 placebo-treated headaches and 18 of the 131 sumatriptan-treated headaches).

Other data suggest that sumatriptan treatment is not associated with an increase in early recurrence of headache, and that treatment with sumatriptan has little effect on the incidence of latter-onset headaches (i.e., those occurring after 2, but before 18 or 24 hours).

INDICATIONS AND USAGE

Sumatriptan succinate injection is indicated for 1) the acute treatment of migraine attacks with or without aura and 2) the acute treatment of cluster headache episodes.

Sumatriptan succinate injection is not for use in the management of hemiplegic or basilar migraine (see CONTRAINDICATIONS).

CONTRAINDICATIONS

Sumatriptan succinate injection should not be given intravenously because of its potential to cause coronary vasospasm.

Sumatriptan succinate injection should not be given to patients with history, symptoms, or signs of ischemic cardiac, cerebrovascular, or peripheral vascular syndromes. In addition, patients with other significant underlying cardiovascular diseases should not receive sumatriptan succinate injection. Ischemic cardiac syndromes include, but are not limited to, angina pectoris of any type (e.g., stable angina of effort and vasospastic forms of angina such as the Prinzmetal variant), all forms of myocardial infarction, and silent myocardial ischemia. Cerebrovascular syndromes include, but are not limited to, strokes of any type as well as transient ischemic attacks. Peripheral vascular disease includes, but is not limited to, ischemic bowel disease (see WARNINGS: Other Vasospasm-Related Events and WARNINGS: Risk of Myocardial Ischemia and/or Infarction and Other Adverse Cardiac Events).

Because sumatriptan succinate injection may increase blood pressure, it should not be given to patients with uncontrolled hypertension. Sumatriptan succinate injection and any ergotamine-containing or ergot-type medication (like dihydroergotamine or methysergide) should not be used within 24 hours of each other, nor should sumatriptan succinate injection and another 5-HT₁ agonist.

Sumatriptan succinate injection should not be administered to patients with hemiplegic or basilar migraine.

Sumatriptan succinate injection is contraindicated in patients with hypersensitivity to sumatriptan or any of its components.

Sumatriptan succinate injection is contraindicated in patients with severe hepatic impairment.

WARNINGS

Sumatriptan succinate injection should only be used where a clear diagnosis of migraine or cluster headache has been established. The prescriber should be aware that cluster headache patients often possess one or more predictive risk factors for coronary artery disease (CAD).

Risk of Myocardial Ischemia and/or Infarction and Other Adverse Cardiac Events

Sumatriptan should not be given to patients with documented ischemic or vasospastic CAD (see CONTRAINDICATIONS). It is strongly recommended that sumatriptan not be given to patients in whom unrecognized CAD is predicted by the presence of risk factors (e.g., hypertension, hypercholesterolemia, smoker, obesity, diabetes, strong family history of CAD, female with surgical or physiological menopause, or male over 40 years of age) unless a cardiovascular evaluation provides satisfactory clinical evidence that the patient is reasonably free of coronary artery and ischemic myocardial disease or other significant underlying cardiovascular disease. The sensitivity of cardiac diagnostic procedures to detect cardiovascular disease or predisposition to coronary artery vasospasm is modest, at best. If, during the cardiovascular evaluation, the patient's medical history or electrocardiographic investigations reveal findings indicative of or consistent with coronary artery vasospasm or myocardial ischemia, sumatriptan should not be administered (see CONTRAINDICATIONS).

For patients with risk factors predictive of CAD who are determined to have a satisfactory cardiovascular evaluation, it is strongly recommended that administration of the first dose of sumatriptan injection take place in the setting of a physician's office or similar medically staffed and equipped facility. Because cardiac ischemia can occur in the absence of clinical symptoms, consideration should be given to obtaining on the first occasion of use an electrocardiogram (ECG) during the interval immediately following sumatriptan succinate injection. In these patients with risk factors.

It is recommended that patients who are intermittent long-term users of sumatriptan and who have or acquire risk factors predictive of CAD, as described above, undergo periodic interval cardiovascular evaluation as they continue to use sumatriptan. In considering this recommendation for periodic cardiovascular evaluation, it is noted that patients with cluster headache are predominantly male and over 40 years of age, which are risk factors for CAD.

The systematic approach described above is intended to reduce the likelihood that patients with unrecognized cardiovascular disease will be inadvertently exposed to sumatriptan.

Drug-Associated Cardiac Events and Fatalities

Serious adverse cardiac events, including acute myocardial infarction, life-threatening disturbances of cardiac rhythm, and death have been reported within a few hours following the administration of sumatriptan succinate injection or sumatriptan succinate tablets. Considering the extent of use of sumatriptan in patients with migraine, the incidence of these events is extremely low.

The fact that sumatriptan can cause coronary vasospasm, that some of these events have occurred in patients with no prior cardiac disease history and with documented absence of CAD, and the close proximity of the events to sumatriptan use support the conclusion that some of these cases were caused by the drug. In many cases, however, where there has been known underlying CAD, the relationship is uncertain.

Premarketing Experience With Sumatriptan

Among the more than 1,900 patients with migraine who participated in premarketing controlled clinical trials of subcutaneous sumatriptan, there were 8 patients who sustained clinical events during or shortly after receiving sumatriptan that may have reflected coronary artery vasospasm. Six of these 8 patients had ECG changes consistent with transient ischemia, but without accompanying clinical symptoms or signs. Of these 8 patients, 4 had other findings suggestive of CAD or risk factors predictive of CAD prior to study enrollment.

Of 6,348 patients with migraine who participated in premarketing controlled and uncontrolled clinical trials of oral sumatriptan, 2 experienced clinical adverse events shortly after receiving oral sumatriptan that may have reflected coronary vasospasm. Neither of these adverse events was associated with a serious clinical outcome.

Among approximately 4,000 patients with migraine who participated in premarketing controlled and uncontrolled clinical trials of sumatriptan nasal spray, 1 patient experienced an asymptomatic subendocardial infarction possibly subsequent to a coronary vasospastic event.

Postmarketing Experience With Sumatriptan

Serious cardiovascular events, some resulting in death, have been reported in association with the use of sumatriptan succinate injection or sumatriptan succinate tablets. The uncontrolled nature of postmarketing surveillance, however, makes it impossible to determine definitively the proportion of the reported cases that were actually caused by sumatriptan or to reliably assess causation in individual cases. On clinical grounds, the longer the latency between the administration of sumatriptan succinate and the onset of the clinical event, the less likely the association is to be causative. Accordingly, interest has focused on events beginning within 1 hour of the administration of sumatriptan succinate.

Cardiac events that have been observed to have onset within 1 hour of sumatriptan administration include: coronary artery vasospasm, transient ischemia, myocardial infarction, ventricular tachycardia and ventricular fibrillation, cardiac arrest, and death.

Some of these events occurred in patients who had no findings of CAD and appear to represent consequences of coronary artery vasospasm. However, among domestic reports of serious cardiac events within 1 hour of sumatriptan administration, the majority had risk factors predictive of CAD and the presence of significant underlying CAD was established in most cases (see CONTRAINDICATIONS).

Drug-Associated Cerebrovascular Events and Fatalities

Cerebral hemorrhage, subarachnoid hemorrhage, stroke, and other cerebrovascular events have been reported in patients treated with oral or subcutaneous sumatriptan, and some have resulted in fatalities. The relationship of sumatriptan to these events is uncertain. In a number of cases, it appears possible that the cerebrovascular events were primary, sumatriptan having been administered in the incorrect belief the symptoms experienced were a consequence of migraine when they were not. As with other acute migraine therapies, before treating headaches in patients not previously diagnosed as migraineurs, and in migraineurs who present with atypical symptoms, care should be taken to exclude other potentially serious neurological conditions. It should also be noted that patients with migraine may be at increased risk of certain cerebrovascular events (e.g., cerebrovascular accident, transient ischemic attack).

Other Vasospasm-Related Events

Sumatriptan may cause vasospastic reactions other than coronary artery vasospasm. Both peripheral vascular ischemia and colonic ischemia with abdominal pain and bloody diarrhea have been reported. Very rare reports of transient and permanent blindness and significant partial vision loss have been reported with the use of sumatriptan. Visual disorders may also be part of a migraine attack.

Serotonin Syndrome: The development of a potentially life-threatening serotonin syndrome may occur with triptans, including treatment with sumatriptan succinate, particularly during combined use with selective serotonin reuptake inhibitors (SSRIs) or serotonin norepinephrine reuptake inhibitors (SNRIs). If concomitant treatment with sumatriptan and an SSRI (e.g., fluoxetine, paroxetine, sertraline, fluvoxamine, citalopram, escitalopram) or SNRI (e.g., venlafaxine, duloxetine) is clinically warranted, careful observation of the patient is advised, particularly during treatment initiation and dose increases. Serotonin syndrome symptoms may include mental

status changes (e.g., agitation, hallucinations, coma), autonomic instability (e.g., tachycardia, labile blood pressure, hyperthermia), neuromuscular aberrations (e.g., hyperreflexia, incoordination), and/or gastrointestinal symptoms (e.g., nausea, vomiting, diarrhea).

Increase in Blood Pressure

Significant elevation in blood pressure, including hypertensive crisis, has been reported on rare occasions in patients with and without a history of hypertension. Sumatriptan is contraindicated in patients with uncontrolled hypertension (see CONTRAINDICATIONS). Sumatriptan should be administered with caution to patients with controlled hypertension as transient increases in blood pressure and peripheral vascular resistance have been observed in a small proportion of patients.

Concomitant Drug Use

In patients taking MAO-A inhibitors, sumatriptan plasma levels attained after treatment with recommended doses are nearly double those obtained under other conditions. Accordingly, the concomitant administration of sumatriptan and a MAO-A inhibitor is not generally recommended. If such therapy is clinically warranted, however, suitable dose adjustment and appropriate observation of the patient is advised (see CLINICAL PHARMACOLOGY: Drug Interactions: Monoamine Oxidase Inhibitors).

Use in Women of Childbearing Potential (see PRECAUTIONS: Pregnancy)

Hypersensitivity
Hypersensitivity (anaphylaxis/anaphylactoid) reactions have occurred on rare occasions in patients receiving sumatriptan. Such reactions can be life threatening or fatal. In general, hypersensitivity reactions to drugs are more likely to occur in individuals with a history of sensitivity to multiple allergens (see CONTRAINDICATIONS).

PRECAUTIONS

General

Chest, jaw, or neck tightness is relatively common after administration of sumatriptan succinate injection. Chest discomfort and jaw or neck tightness have been reported following use of sumatriptan succinate tablets and have also been reported infrequently following the administration of Sumatriptan Nasal Spray. Only rarely have these symptoms been associated with ischemic ECG changes. However, because sumatriptan may cause coronary artery vasospasm, patients who experience signs or symptoms suggestive of angina following sumatriptan should be evaluated for the presence of CAD or a predisposition to Prinzmetal variant angina before receiving additional doses of sumatriptan and should be monitored electrocardiographically if dosing is resumed and similar symptoms recur. Similarly, patients who experience other symptoms or signs suggestive of decreased arterial flow, such as ischemic bowel syndrome or Raynaud syndrome, following sumatriptan should be evaluated for atherosclerosis or predisposition to vasospasm (see WARNINGS: Risk of Myocardial Ischemia and/or Infarction and Other Adverse Cardiac Events and WARNINGS: Other Vasospasm-Related Events).

Sumatriptan succinate should also be administered with caution to patients with diseases that may alter the absorption, metabolism, or excretion of drugs, such as impaired hepatic or renal function.

There have been rare reports of seizure following administration of sumatriptan. Sumatriptan should be used with caution in patients with a history of epilepsy or conditions associated with a lowered seizure threshold.

Care should be taken to exclude other potentially serious neurologic conditions before treating headache in patients not previously diagnosed with migraine or cluster headache or who experience a headache that is atypical for them. There have been rare reports where patients received sumatriptan for severe headaches that were subsequently shown to have been secondary to an evolving neurologic lesion (see WARNINGS: Drug-Associated Cerebrovascular Events and Fatalities). For a given attack, if a patient does not respond to the first dose of sumatriptan, the diagnosis of migraine or cluster headache should be reconsidered before administration of a second dose.

Binding to Melanin-Containing Tissues
Because sumatriptan binds to melanin, it could accumulate in melanin-rich tissues (such as the eye) over time. This raises the possibility that sumatriptan could cause toxicity in these tissues after extended use. However, no effects on the retina related to treatment with sumatriptan were noted in any of the toxicity studies. Although no systematic monitoring of ophthalmologic function was undertaken in clinical trials, and no specific recommendations for ophthalmologic monitoring are offered, prescribers should be aware of the possibility of long-term ophthalmologic effects (see CLINICAL PHARMACOLOGY: Melanin Binding).

Corneal Opacities

Sumatriptan causes corneal opacities and defects in the corneal epithelium in dogs; this raises the possibility that these changes may occur in humans. While patients were not systematically evaluated for these changes in clinical trials, and no specific recommendations for monitoring are being offered, prescribers should be aware of the possibility of these changes (see CLINICAL PHARMACOLOGY: Corneal Opacities).

Patients who are advised to self-administer sumatriptan succinate injection in medically unsupervised situations should receive instruction on the proper use of the product from the physician or other suitably qualified health care professional prior to doing so for the first time.

Information for Patients

Since the injection is intended to be given subcutaneously, intramuscular or intravascular delivery should be avoided. Patients should be directed to use injection sites with an adequate skin and subcutaneous thickness to accommodate the length of the needle. See PATIENT INFORMATION at the end of this labeling for the text of the separate leaflet provided for patients.

Patients should be cautioned about the risk of serotonin syndrome with the use of sumatriptan or other triptans, especially during combined use with SSRIs or SNRIs.

Laboratory Tests

No specific laboratory tests are recommended for monitoring patients prior to and/or after treatment with sumatriptan.

Drug Interactions

Selective Serotonin Reuptake Inhibitors/Serotonin Norepinephrine Reuptake Inhibitors and Serotonin Syndrome
Cases of life-threatening serotonin syndrome have been reported during combined use of SSRIs or SNRIs and triptans (see WARNINGS).

Migraine Prophylactic Medications

There is no evidence that concomitant use of migraine prophylactic medications has any effect on the efficacy of sumatriptan. In 2 Phase III trials in the US, a retrospective analysis of 282 patients who had been using prophylactic drugs (verapamil n = 63, amitriptyline n = 57, propranolol n = 94, for 45 other drugs n = 1

Significant hypertensive episodes, including hypertensive crises, have been reported on rare occasions in patients with or without a history of hypertension (see WARNINGS: Increase in Blood Pressure).

Among patients in clinical trials of subcutaneous sumatriptan succinate injection (N = 6,218), up to 3.5% of patients withdrew for reasons related to adverse events.

Incidence in Controlled Clinical Trials of Migraine Headache

Table 4 lists adverse events that occurred in 2 large US, Phase III, placebo-controlled clinical trials in migraine patients following either a single 6 mg dose of sumatriptan succinate injection or placebo. Only events that occurred at a frequency of 2% or more in groups treated with sumatriptan succinate injection 6 mg and occurred at a frequency greater than the placebo group are included in Table 4.

Table 4. Treatment-Emergent Adverse Experience Incidence in 2 Large Placebo-Controlled Migraine Clinical Trials: Events Reported by at Least 2% of Patients Treated With Sumatriptan Succinate Injection 6 mg *

| Adverse Event | Percent of Patients Reporting | |
|----------------------------------|---|-------------------|
| | Sumatriptan succinate Injection 6 mg Subcutaneous (n = 547) | Placebo (n = 370) |
| Atypical sensations | 42 | 9 |
| Tingling | 14 | 3 |
| Warm/hot sensation | 11 | 4 |
| Burning sensation | 7 | <1 |
| Feeling of heaviness | 7 | 1 |
| Pressure sensation | 7 | 2 |
| Feeling of lightheadness | 5 | <1 |
| Numbness | 5 | 2 |
| Feeling strange | 2 | <1 |
| Tight feeling in head | 2 | <1 |
| Cardiovascular | | |
| Flushing | 7 | 2 |
| Chest discomfort | 5 | 1 |
| Tightness in chest | 3 | <1 |
| Pressure in chest | 2 | <1 |
| Ear, nose, and throat | | |
| Throat discomfort | 3 | <1 |
| Discomfort: nasal cavity/sinuses | 2 | <1 |
| Injection site reaction | 59 | 24 |
| Miscellaneous | | |
| Jaw discomfort | 2 | 0 |
| Musculoskeletal | | |
| Weakness | 5 | <1 |
| Neck pain/stiffness | 5 | <1 |
| Myalgia | 2 | <1 |
| Neurological | | |
| Dizziness/vertigo | 12 | 4 |
| Drowsiness/sedation | 3 | 2 |
| Headache | 2 | <1 |
| Skin | | |
| Sweating | 2 | 1 |

* The sum of the percentages cited is greater than 100% because patients may experience more than 1 type of adverse event. Only events that occurred at a frequency of 2% or more in groups treated with sumatriptan succinate injection and occurred at a frequency greater than the placebo groups are included.

The incidence of adverse events in controlled clinical trials was not affected by gender or age of the patients. There were insufficient data to assess the impact of race on the incidence of adverse events.

Incidence in Controlled Trials of Cluster Headache

In the controlled clinical trials assessing sumatriptan's efficacy as a treatment for cluster headache, no new significant adverse events associated with the use of sumatriptan were detected that had not already been identified in association with the drug's use in migraine.

Overall, the frequency of adverse events reported in the studies of cluster headache were generally lower. Exceptions include reports of paresthesia (5% sumatriptan succinate, 0% placebo), nausea and vomiting (4% sumatriptan succinate, 0% placebo), and bronchospasm (1% sumatriptan succinate, 0% placebo).

Other Events Observed in Association With the Administration of Sumatriptan Succinate Injection

In the paragraphs that follow, the frequencies of less commonly reported adverse clinical events are presented. Because the reports include events observed in open and uncontrolled studies, the role of sumatriptan succinate injection in their causation cannot be reliably determined.

Furthermore, variability associated with adverse event reporting, the terminology used to describe adverse events, etc., limit the value of the quantitative frequency estimates provided.

Event frequencies are calculated as the number of patients reporting an event divided by the total number of patients (N = 6,218) exposed to subcutaneous sumatriptan succinate injection. All reported events are included except those already listed in the previous table, those too general to be informative, and those not reasonably associated with the use of the drug. Events are further classified within body system categories and enumerated in order of decreasing frequency using the following definitions: frequent adverse events are defined as those occurring in at least 1/100 patients, infrequent adverse events are those occurring in 1/100 to 1/1,000 patients, and rare adverse events are those occurring in fewer than 1/1,000 patients.

Cardiovascular

Infrequent were hypertension, hypotension, bradycardia, tachycardia, palpitations, pulsating sensations, various transient ECG changes (nonspecific ST or T wave changes, prolongation of PR or QTc intervals, sinus arrhythmia, nonsustained ventricular premature beats, isolated junctional ectopic beats, atrial ectopic beats, delayed activation of the right ventricle), and syncope. Rare were pallor, arrhythmia, abnormal pulse, vasodilatation, and Raynaud syndrome.

Endocrine and Metabolic

Infrequent was thirst. Rare were polydipsia and dehydration.

Eye

Frequent was vision alterations. Infrequent was irritation of the eye.

Gastrointestinal

Frequent were abdominal discomfort and dysphagia. Infrequent were gastroesophageal reflux and diarrhea. Rare were peptic ulcer, retching, flatulence/eructation, and gallstones.

Musculoskeletal

Frequent were muscle cramps. Infrequent were various joint disturbances (pain, stiffness, swelling, ache). Rare were muscle stiffness, need to flex calf muscles, backache, muscle tiredness, and swelling of the extremities.

Neurological

Frequent was anxiety. Infrequent were mental confusion, euphoria, agitation, relaxation, chills, sensation of lightheadness, tremor, shivering, disturbances of taste, prickling sensations, paresthesia, stinging sensations, facial pain, photophobia, and lacrimation. Rare were transient hemiplegia, hysteria, globus hystericus, intoxication, depression, myoclonia, monoplegia/diplegia, sleep disturbance, difficulties in concentration, disturbances of smell, hyperesthesia, dysesthesia, simultaneous hot and cold sensations, tickling sensations, dysarthria, yawning, reduced appetite, hunger, and dystonia.

Respiratory

Infrequent was dyspnea. Rare were influenza, diseases of the lower respiratory tract, and hiccoughs.

Skin

Infrequent were erythema, pruritus, and skin rashes and eruptions. Rare was skin tenderness.

Urogenital

Rare were dysuria, frequency, dysmenorrhea, and renal calculus.

Miscellaneous

Infrequent were miscellaneous laboratory abnormalities, including minor disturbances in liver function tests, "serotonin agonist effect," and hypersensitivity to various agents. Rare was fever.

Other Events Observed in the Clinical Development of Sumatriptan Succinate

The following adverse events occurred in clinical trials with sumatriptan succinate tablets and sumatriptan succinate Nasal Spray. Because the reports include events observed in open and uncontrolled studies, the role of sumatriptan succinate in their causation cannot be reliably determined. All reported events are included except those already listed, those too general to be informative, and those not reasonably associated with the use of the drug.

Breasts

Breast swelling, cysts, disorder of breasts, lumps, masses of breasts, nipple discharge, primary malignant breast neoplasm, and tenderness.

Cardiovascular

Abdominal aortic aneurysm, angina, atherosclerosis, cerebral ischemia, cerebrovascular lesion, heart block, peripheral cyanosis, phlebitis, thrombosis, and transient myocardial ischemia.

Ear, Nose, and Throat

Allergic rhinitis; disorder of nasal cavity/sinuses; ear, nose, and throat hemorrhage; ear infection; external otitis; feeling of fullness in the ear(s); hearing disturbances; hearing loss; Meniere disease; nasal inflammation; otalgia; sensitivity to noise; sinusitis; tinnitus; and upper respiratory inflammation.

Endocrine and Metabolic

Elevated thyrotropin stimulating hormone (TSH) levels; endocrine cysts, lumps, and masses; fluid disturbances; galactorrhea; hyperglycemia; hypoglycemia; hypothyroidism; weight gain; and weight loss.

Eye

Accommodation disorders, blindness and low vision, conjunctivitis, disorders of sclera, external ocular muscle disorders, eye edema and swelling, eye hemorrhage, eye itching, eye pain, keratitis, mydriasis, and visual disturbances.

Gastrointestinal

Abdominal distention, colitis, constipation, dental pain, dyspeptic symptoms, feelings of gastrointestinal pressure, gastric symptoms, gastritis, gastroenteritis, gastrointestinal bleeding, gastrointestinal pain, hematemesis, hypersalivation, hyposalivation, intestinal obstruction, melena, nausea and/or vomiting, oral itching and irritation, pancreatitis, salivary gland swelling, and swallowing disorders.

Hematological Disorders

Anemia.

Mouth and Teeth

Disorder of mouth and tongue (e.g., burning of tongue, numbness of tongue, dry mouth).

Musculoskeletal

Acquired musculoskeletal deformity, arthralgia and articular rheumatitis, arthritis, intervertebral disc disorder, muscle atrophy, muscle tightness and rigidity, musculoskeletal inflammation, and tetany.

Neurological

Apathy, aggressiveness, bad/unusual taste, bradylogia, cluster headache, convulsions, depressive disorders, detachment, disturbance of emotions, drug abuse, facial paralysis, hallucinations, heat sensitivity, incoordination, increased alertness, memory disturbance, migraine, motor dysfunction, neoplasm of pituitary, neuralgia, neurotic disorders, paralysis, personality change, phobia, phonophobia, psychomotor disorders, radiculopathy, raised intracranial pressure, rigidity, stress, syncope, suicide, and twitching.

Respiratory

Asthma, breathing disorders, bronchitis, cough, and lower respiratory tract infection.

Skin

Dry/scaly skin, eczema, herpes, seborrheic dermatitis, skin nodules, tightness of skin, and wrinkling of skin.

Urogenital

Abnormal menstrual cycle, abortion, bladder inflammation, endometriosis, hematuria, increased urination, inflammation of fallopian tubes, intermenstrual bleeding, menstruation symptoms, micturition disorders, urethritis, and urinary infections.

Miscellaneous

Contusions, difficulty in walking, edema, hematoma, hypersensitivity, fever, fluid retention, lymphadenopathy, overdose, speech disturbance, swelling of extremities, swelling of face, and voice disturbances.

Pain and Other Pressure Sensations

Chest pain and/or heaviness, neck/throat/jaw pain/tightness/pressure, and pain (location specified).

Postmarketing Experience (Reports for Subcutaneous or Oral Sumatriptan)

The following section enumerates potentially important adverse events that have occurred in clinical practice and that have been reported spontaneously to various surveillance systems. The events enumerated represent reports arising from both domestic and nondomestic use of oral or subcutaneous dosage forms of sumatriptan. The events enumerated include all except those already listed in the ADVERSE REACTIONS section above or those too general to be informative. Because the reports cite events reported spontaneously from worldwide postmarketing experience, frequency of events and the role of sumatriptan succinate injection in their causation cannot be reliably determined. It is assumed, however, that systemic reactions following sumatriptan use are likely to be similar regardless of route of administration.

Blood

Hemolytic anemia, pancytopenia, thrombocytopenia.

Cardiovascular

Atrial fibrillation, cardiomyopathy, colonic ischemia (see WARNINGS), Prinzmetal variant angina, pulmonary embolism, shock, thrombophlebitis.

Ear, Nose, and Throat

Deafness.

Eye

Ischemic optic neuropathy, retinal artery occlusion, retinal vein thrombosis, loss of vision.

Gastrointestinal

Ischemic colitis with rectal bleeding (see WARNINGS), xerostomia.

Hepatic

Elevated liver function tests.

Neurological

Central nervous system vasculitis, cerebrovascular accident, dysphasia, serotonin syndrome, subarachnoid hemorrhage.

Non-Site Specific

Angioneurotic edema, cyanosis, death (see WARNINGS), temporal arteritis.

Psychiatry

Panic disorder.

Respiratory

Bronchospasm in patients with and without a history of asthma.

Skin

Exacerbation of sunburn, hypersensitivity reactions (allergic vasculitis, erythema, pruritus, rash, shortness of breath, urticaria; in addition, severe anaphylaxis/anaphylactoid reactions have been reported (see WARNINGS: Hypersensitivity)), photosensitivity. Following subcutaneous administration of sumatriptan, pain, redness, stinging, induration, swelling, contusion, subcutaneous bleeding, and, on rare occasions, lipotrophy (depression in the skin) or lipohypertrophy (enlargement or thickening of tissue) have been reported.

Urogenital

Acute renal failure.

DRUG ABUSE AND DEPENDENCE

The abuse potential of sumatriptan succinate injection cannot be fully delineated in advance of extensive marketing experience. One clinical study enrolling 12 patients with a history of substance abuse failed to induce subjective behavior and/or physiologic response ordinarily associated with drugs that have an established potential for abuse.

OVERDOSAGE

Patients (N = 269) have received single injections of 8 to 12 mg without significant adverse effects. Volunteers (N = 47) have received single subcutaneous doses of up to 16 mg without serious adverse events.

No gross overdoses in clinical practice have been reported. Coronary vasospasm was observed after intravenous administration of sumatriptan succinate injection (see CONTRAINDICATIONS).

Overdoses would be expected from animal data (dogs at 0.1 g/kg, rats at 2 g/kg) to possibly cause convulsions, tremor, inactivity, erythema of the extremities, reduced respiratory rate, cyanosis, ataxia, mydriasis, injection site reactions (desquamation, hair loss, and scab formation), and paralysis. The half-life of elimination of sumatriptan is about 2 hours (see CLINICAL PHARMACOLOGY: Pharmacokinetics), and therefore monitoring of patients after overdose with sumatriptan succinate injection should continue while symptoms or signs persist, and for at least 10 hours.

It is unknown what effect hemodialysis or peritoneal dialysis has on the serum concentrations of sumatriptan.

DOSAGE AND ADMINISTRATION

The maximum single recommended adult dose of sumatriptan succinate injection is 6 mg injected subcutaneously. If side effects are dose limiting, then lower doses may be used (see Table 1).

The maximum recommended dose that may be given in 24 hours is two 6-mg injections separated by at least 1 hour. Controlled clinical trials have failed to show that clear benefit is associated with the administration of a second 6-mg dose in patients who have failed to respond to a first injection.

In patients receiving MAO inhibitors, decreased doses of sumatriptan should be considered (see WARNINGS: Concomitant Drug Use and CLINICAL PHARMACOLOGY: Drug Interactions: Monoamine Oxidase Inhibitors).

Since the injection is intended to be given subcutaneously, intramuscular or intravascular delivery should be avoided. Patients should be directed to use injection sites with an adequate skin and subcutaneous thickness to accommodate the length of the needle.

Parenteral drug products should be inspected visually for particulate matter and discoloration before administration whenever solution and container permit.

HOW SUPPLIED

Sumatriptan succinate injection 6 mg / 0.5 mL containing sumatriptan 6 mg (base) as the succinate salt and is supplied as a clear, colorless to pale yellow, sterile, nonpyrogenic solution as follows:

NDC 64679-728-01 sumatriptan succinate injection single-dose vial (6 mg/0.5 mL) in cartons containing 5 vials.

Store between 2° and 25°C (36° and 77°F). Protect from light.

PATIENT INFORMATION

The following wording is contained in a separate leaflet provided for patients.

Information for the Patient

Sumatriptan Succinate Injection

Rx only

Read this leaflet carefully before you start to take sumatriptan succinate injection. Keep the leaflet for reference because it gives you a summary of important information about sumatriptan succinate injection.

Read the leaflet that comes with each refill of your prescription because there may be new information.

This leaflet does not have all the information about sumatriptan succinate injection. Ask your healthcare provider for more information or advice.

What is Sumatriptan Succinate Injection?

Sumatriptan succinate injection is a 5-HT₁ agonist. It is also called a "triptan." You should use it only if you have a prescription.

Sumatriptan succinate injection is used to relieve your migraine or cluster headache. Sumatriptan succinate injection is not used to prevent attacks or reduce the number of attacks you have. Use sumatriptan succinate injection only to treat an actual migraine or cluster headache attack.

The decision to use sumatriptan succinate injection is one that you and your healthcare provider should make together, taking into account your personal needs and health.

Talk to your healthcare provider before taking sumatriptan succinate injection

1. Risk factors for heart disease:

Tell your healthcare provider if you have risk factors for heart disease such as:

- high blood pressure,
- high cholesterol,
- obesity,
- diabetes,
- smoking,
- strong family history of heart disease,
- you are postmenopausal, or
- you are a male over 40 years of age.

If you do have risk factors for heart disease, your healthcare provider should check you for heart disease to see if sumatriptan succinate is right for you.

Although most of the people who have taken sumatriptan succinate have not had any serious side effects, some have had serious heart problems. Deaths have been reported, but these were rare considering the extensive worldwide use of sumatriptan succinate. Usually, serious problems happened in people with known heart diseases. It was not clear whether sumatriptan succinate had anything to do with these deaths.

2. Important questions to consider before taking sumatriptan succinate injection

If the answer to any of the following questions is YES or if you do not know the answer, then please talk with your healthcare provider before you use sumatriptan succinate injection.

- Are you pregnant? Do you think you might be pregnant? Are you trying to become pregnant? Are you using inadequate contraception? Are you breastfeeding?
- Do you have any chest pain, heart disease, shortness of breath, or irregular heartbeats? Have you had a heart attack?
- Do you have risk factors for heart disease (such as high blood pressure, high cholesterol, obesity, diabetes, smoking, strong family history of heart disease, or you are postmenopausal or a male over 40)?
- Have you had a stroke, transient ischemic attacks (TIAs), or Raynaud syndrome?
- Do you have high blood pressure?
- Have you ever had to stop taking this or any other medicine because of an allergy or other problems?
- Are you taking any other migraine medicines, including other 5-HT₁ agonists (triptans) or any other medicines containing ergotamine, dihydroergotamine, or methysergide?
- Are you taking any medicine for depression or other disorders such as monoamine oxidase inhibitors, selective serotonin reuptake inhibitors (SSRIs), or serotonin norepinephrine reuptake inhibitors (SNRIs)? Common SSRIs are citalopram HBr (CELEXA[®]), escitalopram oxalate (LEXAPRO[®]), paroxetine (PAXIL[®]), fluoxetine (PROZAC[®]/SARAFEM[®]), olanzapine/fluoxetine (SYMBYAX[®]), sertraline (ZOLOFT[®]), and fluvoxamine. Common SNRIs are duloxetine (CYMBALTA[®]) and venlafaxine (EFFEXOR[®]).
- Have you had, or do you have, any disease of the liver or kidney?
- Have you had, or do you have, epilepsy or seizures?
- Is this headache different from your usual migraine attacks?

Remember, if you answered YES to any of the above questions, then talk with your healthcare provider about it.

Important points about sumatriptan succinate injection

1. The use of sumatriptan succinate injection during pregnancy

Does not use sumatriptan succinate injection if you are pregnant, think you might be pregnant, are trying to become pregnant, or are not using adequate contraception unless you have talked with your healthcare provider about this.

2. How to use sumatriptan succinate injection

For adults, the usual dose is a single injection given just below the skin. You should give an injection as soon as the symptoms of your migraine start, but it may be given at any time during an attack.

You may give a second injection if your migraine symptoms come back. If your symptoms do not get better after the first injection, do not give a second injection for the same attack without first talking with your healthcare provider. Do not give more than two 6 mg doses in any 24-hour period. Allow at least 1 hour between each dose.

3. What to do if you take an overdose

If you have taken more medicine than has been prescribed for you, contact either your healthcare provider, hospital emergency department, or nearest poison control center immediately.

4. How to store your medicine

Keep your medicine in a safe place where children cannot reach it. It may be harmful to children.

Store your medicine away from heat and light. Do not store at temperatures above 25°C (77°F).

If your medicine has expired (the expiration date is printed on the container), throw it away as instructed.

If your healthcare provider decides to stop your treatment, do not keep any leftover medicine unless your healthcare provider tells you to. Throw away your medicine as instructed.

Some possible side effects of sumatriptan succinate injection

1. Some patients feel pain or tightness in the chest or throat when using sumatriptan succinate injection. If this happens to you, then discuss it with your healthcare provider before using any more sumatriptan succinate injection. If the chest pain is severe or does not go away, call your healthcare provider right away.
2. Call your healthcare provider right away if you have sudden and/or severe abdominal pain following sumatriptan succinate injection.
3. Some people may have a reaction called serotonin syndrome when they use certain types of antidepressants, SSRIs or SNRIs, while taking sumatriptan succinate injection. Symptoms may include confusion, hallucinations, fast heartbeat, feeling faint, fever, sweating, muscle spasm, difficulty walking, and/or diarrhea. Call your doctor immediately if you have any of these symptoms after taking sumatriptan succinate injection.
4. Shortness of breath; wheeziness; heart throbbing; swelling of eyelids, face, or lips; or a skin rash, skin lumps, or hives happens rarely. If it happens to you, then tell your healthcare provider right away. Do not take any more sumatriptan succinate injection unless your healthcare provider tells you to.
5. Some people may feel tingling, heat, flushing (redness of face lasting a short time), heaviness, or pressure after using sumatriptan succinate injection. A few people may feel drowsy, dizzy, tired, or sick. If you have any of these symptoms, tell your healthcare provider at your next visit.
6. You may have pain or redness at the site of injection, but this usually lasts less than an hour.
7. If you feel unwell in any other way or have any symptoms that you do not understand, you should contact your healthcare provider right away.

*The brands listed are trademarks of their respective owners and are not trademarks of Wockhardt. The makers of these brands are not affiliated with and do not endorse Wockhardt or its products.

Manufactured by:

Wockhardt Limited,

Mumbai, INDIA.

Distributed by:

Wockhardt USA Inc.,

20 Watenvue Blvd.

Parsippany, NJ 07054

USA.

Iss.060109