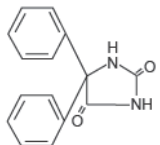


Dilantin® (extended phenytoin sodium capsules, USP)

DESCRIPTION

Phenytoin sodium is an antiepileptic drug. Phenytoin sodium is related to the barbiturates in chemical structure, but has a five-membered ring. The chemical name is sodium 5,5-diphenyl-2,4-imidazolidinedione, having the following structural formula:



Each 30 mg Dilantin— (extended phenytoin sodium capsule, USP)—contains 30 mg phenytoin sodium, USP. Also contains lactose monohydrate, NF; confectioner's sugar, NF; talc, USP; and magnesium stearate, NF. The capsule shell cap and body components contain titanium dioxide (cap and body); gelatin (cap and body); D&C yellow No. 10 (cap); FD&C red No. 3 (cap). Product *in vivo* performance is characterized by a slow and extended rate of absorption with peak blood concentrations expected in 4 to 12 hours as contrasted to *Prompt Phenytoin Sodium Capsules, USP* with a rapid rate of absorption with peak blood concentration expected in 1½ to 3 hours.

Each 100 mg Dilantin— (100 mg extended phenytoin sodium capsule, USP)—contains 100 mg phenytoin sodium. Also contains lactose monohydrate, NF; confectioner's sugar, NF; talc, USP; and magnesium stearate, NF. The capsule body contains titanium dioxide, USP and gelatin, NF. The capsule cap contains FD&C red No. 28; FD&C yellow No. 6; and gelatin NF. Product *In vivo* performance is characterized by a slow and extended rate of absorption with peak blood concentrations expected in 4 to 12 hours as contrasted to *Prompt Phenytoin Sodium Capsules, USP* with a rapid rate of absorption with peak blood concentration expected in 1½ to 3 hours.

CLINICAL PHARMACOLOGY

Mechanism of Action

Phenytoin is an antiepileptic drug which can be useful in the treatment of epilepsy. The primary site of action appears to be the motor cortex where spread of seizure activity is inhibited. Possibly by promoting sodium efflux from neurons, phenytoin tends to stabilize the threshold against hyperexcitability caused by excessive stimulation or environmental changes capable of reducing membrane sodium gradient. This includes the reduction of postsynaptic potentiation at synapses. Loss of postsynaptic potentiation prevents cortical seizure foci from detouring adjacent cortical areas. Phenytoin reduces the maximal activity of brain stem centers responsible for the tonic phase of tonic-clonic (grand mal) seizures.

Pharmacokinetics and Drug Metabolism

The plasma half-life in man after oral administration of phenytoin averages 22 hours, with a range of 7 to 42 hours. Steady-state therapeutic levels are achieved at least 7 to 10 days (5-7 half-lives) after initiation of therapy with recommended doses of 300 mg/day.

When serum level determinations are necessary, they should be obtained at least 5-7 half-lives after treatment initiation, dosage change, or addition or subtraction of another drug to the regimen so that equilibrium or steady-state will have been achieved. Trough levels provide information about clinically effective serum level range and confirm patient compliance and are obtained just prior to the patient's next scheduled dose. Peak levels indicate an individual's threshold for emergence of dose-related side effects and are obtained at the time of expected peak concentration. For Dilantin capsules, peak serum levels occur 4 to 12 hours after administration.

Optimum control without clinical signs of toxicity occurs more often with serum levels between 10 and 20 mcg/mL, although some mild cases of tonic-clonic (grand mal) epilepsy may be controlled with lower serum levels of phenytoin.

In most patients maintained at a steady dosage, stable phenytoin serum levels are achieved. There may be wide interpatient variability in phenytoin serum levels with equivalent dosages. Patients with unusually low levels may be noncompliant or hypermetabolizers of phenytoin. Unusually high levels result from liver disease, variant CYP2C9 and CYP2C19 alleles, or drug interactions which result in metabolic interference. The patient with large variations in phenytoin plasma levels, despite standard doses, presents a difficult clinical problem. Serum level determinations in such patients may be particularly helpful. As phenytoin is highly protein bound, free phenytoin levels may be altered in patients whose protein binding characteristics differ from normal.

Most of the drug is excreted in the bile as inactive metabolites which are then reabsorbed from the intestinal tract and excreted in the urine. Urinary excretion of phenytoin and its metabolites occurs partly with glomerular filtration but more importantly by tubular secretion. Because phenytoin is hydrolyzed in the liver by an enzyme system which is saturable at high plasma levels, small incremental doses may increase the half-life and produce very substantial increases in serum levels, when these are in the upper range. The steady-state level may be disproportionately increased, with resultant intoxication, from an increase in dosage of 10% or more.

Special Populations

Patients with Renal or Hepatic Disease: Due to an increased fraction of unbound phenytoin in patients with renal or hepatic disease, or in those with hypoalbuminemia, the interpretation of total phenytoin plasma concentrations should be made with caution (see DOSAGE AND ADMINISTRATION). Unbound phenytoin concentrations may be more useful in these patient populations.

Age: Phenytoin clearance tends to decrease with increasing age (20% less in patients over 70 years of age relative to that in patients 20-30 years of age). Phenytoin dosing requirements are highly variable and must be individualized (see DOSAGE AND ADMINISTRATION).

Gender and Race: Gender and race have no significant impact on phenytoin pharmacokinetics.

Pediatrics: Initially, 5 mg/kg/day in two or three equally divided doses, with subsequent dosage individualized to a maximum of 300 mg daily. A recommended daily maintenance dosage is usually 4 to 8 mg/kg. Children over 6 years and adolescents may require the minimum adult dose (300 mg/day).

INDICATIONS AND USAGE

Dilantin is indicated for the control of generalized tonic-clonic (grand mal) and complex partial (psychomotor, temporal lobe) seizures and prevention and treatment of seizures occurring during or following neurosurgery.

Phenytoin serum level determinations may be necessary for optimal dosage adjustments (see DOSAGE AND ADMINISTRATION and CLINICAL PHARMACOLOGY sections).

Dilantin® (extended phenytoin sodium capsules, USP)

CONTRAINDICATIONS

Phenytoin is contraindicated in those patients with a history of hypersensitivity to phenytoin, its inactive ingredients, or other hydantoines.

Coadministration of Dilantin is contraindicated with delavirdine due to potential for loss of virologic response and possible resistance to delavirdine or to the class of non-nucleoside reverse transcriptase inhibitors.

WARNINGS

Effects of Abrupt Withdrawal

Abrupt withdrawal of phenytoin in epileptic patients may precipitate status epilepticus. When, in the judgment of the clinician, the need for dosage reduction, discontinuation, or substitution of alternative antiepileptic medication arises, this should be done gradually. In the event of an allergic or hypersensitivity reaction, more rapid substitution of alternative therapy may be necessary. In this case, alternative therapy should be an antiepileptic drug not belonging to the hydantoin chemical class.

Suicidal Behavior and Ideation

Antiepileptic drugs (AEDs), including Dilantin, increase the risk of suicidal thoughts or behavior in patients taking these drugs for any indication. Patients treated with any AED for any indication should be monitored for the emergence or worsening of depression, suicidal thoughts or behavior, and/or any unusual changes in mood or behavior.

Pooled analyses of 199 placebo-controlled clinical trials (mono- and adjunctive therapy) of 11 different AEDs showed that patients randomized to one of the AEDs had approximately twice the risk (adjusted Relative Risk 1.8, 95% CI:1.2, 2.7) of suicidal thinking or behavior compared to patients randomized to placebo. In these trials, which had a median treatment duration of 12 weeks, the estimated incidence rate of suicidal behavior or ideation among 27 AEDs-treated patients was 0.43%, compared to 0.24% among 16,029 placebo-treated patients, representing an increase of approximately one case of suicidal thinking or behavior for every 530 patients treated. There were four suicides in drug-treated patients in the trials and none in placebo-treated patients, but the number is too small to allow any conclusion about drug effect on suicide.

The increased risk of suicidal thoughts or behavior with AEDs was observed as early as one week after starting drug treatment with AEDs and persisted for the duration of treatment assessed. Because most trials included in the analysis did not extend beyond 24 weeks, the risk of suicidal thoughts or behavior beyond 24 weeks could not be assessed.

The risk of suicidal thoughts or behavior was generally consistent among drugs in the data analyzed. The finding of increased risk with AEDs of varying mechanisms of action and across a range of indications suggests that the risk applies to all AEDs used for any indication. The risk did not vary substantially by age (5-100 years) in the clinical trials analyzed.

Table 1 shows absolute and relative risk by indication for all evaluated AEDs.

Indication	Placebo Patients with Events Per 1000 Patients	Drug Patients with Events Per 1000 Patients	Relative Risk: Incidence of Events in Drug Patients/Incidence in Placebo Patients	Risk Difference: Additional Drug Patients with Events Per 1000 Patients
Epilepsy	1.0	3.4	3.5	2.4
Psychiatric	5.7	8.5	1.5	2.9
Other	1.0	1.8	1.9	0.9
Total	2.4	4.3	1.8	1.9

The relative risk for suicidal thoughts or behavior was higher in clinical trials for epilepsy than in clinical trials for psychiatric or other conditions, but the absolute risk differences were similar for the epilepsy and psychiatric indications.

Anyone considering prescribing Dilantin or any other AED must balance the risk of suicidal thoughts or behavior with the risk of untreated illness. Epilepsy and many other illnesses for which AEDs are prescribed are themselves associated with morbidity and mortality and an increased risk of suicidal thoughts and behavior. Should suicidal thoughts and behavior emerge during treatment, the prescriber needs to consider whether the emergence of these symptoms in any given patient may be related to the illness being treated.

Patients, their caregivers, and families should be informed that AEDs increase the risk of suicidal thoughts and behavior and should be advised of the need to be alert for the emergence or worsening of the signs and symptoms of depression, any unusual changes in mood or behavior, or the emergence of suicidal thoughts, behavior, or thoughts about self-harm. Behaviors of concern should be reported immediately to healthcare providers.

Serious Dermatologic Reactions

Serious and sometimes fatal dermatologic reactions, including toxic epidermal necrolysis (TEN) and Stevens-Johnson syndrome (SJS), have been reported with phenytoin treatment. The onset of symptoms is usually within 28 days, but can occur later. Dilantin should be discontinued at the first sign of a rash, unless the rash is clearly not drug-related. If signs or symptoms suggest SJS/TEN, use of this drug should not be resumed and alternative therapy should be considered. If a rash occurs, the patient should be evaluated for signs and symptoms of Drug Reaction with Eosinophilia and Systemic Symptoms (see DRESS/Multitorgan hypersensitivity below).

Studies in patients of Chinese ancestry have found a strong association between the risk of developing SJS/TEN and the presence of HLA-B*1502, an inherited allele variant of the HLA B gene, in patients using carbamazepine. Limited evidence suggests that HLA-B*1502 may be a risk factor for the development of SJS/TEN in patients of Asian ancestry taking other antiepileptic drugs associated with SJS/TEN, including phenytoin. Consideration should be given to avoiding phenytoin as an alternative for carbamazepine in patients positive for HLA-B*1502.

The use of HLA-B*1502 genotyping has important limitations and must never substitute for appropriate clinical vigilance and patient management. The role of other possible factors in the development of, and morbidity from, SJS/TEN, such as antiepileptic drug (AED) dose, compliance, concomitant medications, comorbidities, and the level of dermatologic monitoring have not been studied.

Drug Reaction with Eosinophilia and Systemic Symptoms (DRESS)/Multitorgan hypersensitivity

Drug Reaction with Eosinophilia and Systemic Symptoms (DRESS), also known as Multitorgan hypersensitivity, has been reported in patients taking antiepileptic drugs, including Dilantin. Some of these events have been fatal or life-threatening. DRESS typically, although not exclusively, presents with fever, rash, and/or lymphadenopathy, in association with other organ system involvement, such as hepatitis, nephritis, hematological abnormalities, myocarditis, or myositis sometimes resembling an acute viral infection. Eosinophilia is often present. Because this disorder is variable in its

Dilantin® (extended phenytoin sodium capsules, USP)

expression, other organ systems not noted here may be involved. It is important to note that early manifestations of hypersensitivity, such as fever or lymphadenopathy, may be present even though rash is not evident. If such signs or symptoms are present, the patient should be evaluated immediately. Dilantin should be discontinued if an alternative etiology for the signs or symptoms cannot be established.

Hypersensitivity

Dilantin and other hydantoines are contraindicated in patients who have experienced phenytoin hypersensitivity (see CONTRAINDICATIONS). Additionally, consider alternatives to structurally similar drugs such as carbamazepine (e.g., carbamazepine), barbiturates, succinimides, and oxazolindiones (e.g., trimethadione) in these same patients. Similarly, if there is a history of hypersensitivity reactions to these structurally similar drugs in the patient or immediate family members, consider alternatives to Dilantin.

Hepatic injury

Cases of acute hepatotoxicity, including infrequent cases of acute hepatic failure, have been reported with Dilantin. These events may be part of the spectrum of DRESS or may occur in isolation. Other common manifestations include jaundice, hepatomegaly or elevated serum transaminase levels, leukocytosis, and eosinophilia. The clinical course of acute phenytoin hepatotoxicity ranges from prompt recovery to fatal outcomes. In these patients with acute hepatotoxicity, Dilantin should be immediately discontinued and not readministered.

Hematopoietic System

Hematopoietic complications, some fatal, have occasionally been reported in association with administration of Dilantin. These have included thrombocytopenia, leukopenia, granulocytopenia, agranulocytosis, and pancytopenia with or without bone marrow suppression.

There have been a number of reports suggesting a relationship between phenytoin and the development of lymphadenopathy (local or generalized) including benign lymph node hyperplasia, pseudolymphoma, lymphoma, and Hodgkin's disease. Although a cause and effect relationship has not been established, the occurrence of lymphadenopathy indicates the need to differentiate such a condition from other types of lymph node pathology. Lymph node involvement may occur with or without symptoms and signs of DRESS.

In all cases of lymphadenopathy, follow-up observation for an extended period is indicated and every effort should be made to achieve seizure control using alternative antiepileptic drugs.

Effects on Vitamin D and Bone

The chronic use of phenytoin in patients with epilepsy has been associated with decreased bone mineral density (osteopenia, osteoporosis, and osteomalacia) and bone fractures. Phenytoin induces hepatic metabolizing enzymes. This may enhance the metabolism of vitamin D and decrease vitamin D levels, which may lead to vitamin deficiency, hypocalcemia, and hypophosphatemia. Consideration should be given to screening with bone-related laboratory and radiological tests as appropriate and initiating treatment plans according to established guidelines.

Effects of Alcohol Use on Phenytoin Serum Levels

Acute alcoholic intake may increase phenytoin serum levels, while chronic alcohol use may decrease serum levels.

Exacerbation of Porphyria

In view of isolated reports associating phenytoin with exacerbation of porphyria, caution should be exercised in using this medication in patients suffering from this disease.

Usage in Pregnancy:

Clinical:

Risks to Mother: An increase in seizure frequency may occur during pregnancy with decreased blood phenytoin pharmacokinetics. Periodic measurement of plasma phenytoin concentrations may be valuable in the management of pregnant women as a guide to appropriate adjustment of dosage (see PRECAUTIONS, Laboratory Tests). However, postpartum restoration of the original dosage will probably be indicated.

Risks to the Fetus: If this drug is used during pregnancy, or if the patient becomes pregnant while taking the drug, the patient should be apprised of the potential harm to the fetus.

Prenatal exposure to phenytoin may increase the risks for congenital malformations and other adverse developmental outcomes. Increased frequencies of major malformations (such as orofacial clefts and cardiac defects), minor anomalies (dysmorphic facial features, nail and digit hypoplasia), growth abnormalities (including microcephaly), and mental deficiency have been reported among children born to epileptic women who took phenytoin alone or in combination with other antiepileptic drugs during pregnancy. There have also been several reported cases of malignancies, including neuroblastoma, in children whose mothers received phenytoin during pregnancy. The overall incidence of malformations for children of epileptic women treated with antiepileptic drugs (phenytoin and/or others) during pregnancy is about 10%, or two- to three-fold that in the general population. However, the relative contributions of antiepileptic drugs and other factors associated with epilepsy to this increased risk are uncertain and in most cases it has not been possible to attribute specific developmental abnormalities to particular antiepileptic drugs.

Patients should consult with their physicians to weigh the risks and benefits of phenytoin during pregnancy.

Postpartum Period: A potentially life-threatening bleeding disorder related to decreased levels of vitamin K dependent clotting factors may occur in newborns exposed to phenytoin *in utero*. This drug-induced condition can be prevented with vitamin K administration to the mother before delivery and to the neonate after birth.

Preclinical:

Increased resorption and malformation rates have been reported following administration of phenytoin doses of 15 mg/kg or higher (approximately 120% of the maximum human loading dose or higher on a mg/m² basis) to pregnant rabbits.

PRECAUTIONS

General: The liver is the chief site of biotransformation of phenytoin; patients with impaired liver function, elderly patients, or those who are gravely ill may show early signs of toxicity.

A small percentage of individuals who have been treated with phenytoin have been shown to metabolize the drug slowly. Slow metabolism may be due to limited enzyme availability and lack of induction; it appears to be genetically determined. If early signs of dose-related CNS toxicity develop, plasma levels should be checked immediately.

Hyperglycemia, resulting from the drug's inhibitory effects on insulin release, has been reported. Phenytoin may also raise the serum glucose level in diabetic patients.

MEDICATION GUIDE

DILANTIN (Di lan' tin) (Phenytoin sodium)

Tablets, Extended Oral Capsules

Read this Medication Guide before you start taking DILANTIN and each time you get a refill. There may be new information. This information does not take the place of talking to your healthcare provider about your medical condition or treatment. If you have any questions about DILANTIN, ask your healthcare provider or pharmacist.

What is the most important information I should know about DILANTIN?

Do not stop taking DILANTIN without first talking to your healthcare provider.

Stopping DILANTIN suddenly can cause serious problems.

DILANTIN can cause serious side effects including:

1. Like other antiepileptic drugs, DILANTIN may cause suicidal thoughts or actions in a very small number of people, about 1 in 500.

Call a healthcare provider right away if you have any of these symptoms, especially if they are new, worse, or worry you:

- thoughts about suicide or dying
- attempts to commit suicide
- new or worse depression
- new or worse anxiety
- feeling agitated or restless
- panic attacks
- trouble sleeping (insomnia)
- new or worse irritability
- acting aggressive, being angry, or violent
- acting on dangerous impulses
- an extreme increase activity and talking (mania)
- other unusual changes in behavior or mood

How can I watch for early symptoms of suicidal thoughts and actions?

- Pay attention to any changes, especially sudden changes, in mood, behaviors, thoughts, or feelings.
- Keep all follow-up visits with your healthcare provider as scheduled.

Call your healthcare provider between visits as needed, especially if you are worried about symptoms.

Do not stop taking DILANTIN without first talking to a healthcare provider.

Stopping DILANTIN suddenly can cause serious problems. Stopping a seizure medicine suddenly in a patient who has epilepsy can cause seizures that will not stop (status epilepticus).

Suicidal thoughts or actions can be caused by things other than medicines. If you have suicidal thoughts or actions, your healthcare provider may check for other causes.

2. Dilantin may harm your unborn baby.

- If you take DILANTIN during pregnancy, your baby is at risk for serious birth defects.
- Birth defects may occur even in children born to women who are not taking any medicines and do not have other risk factors

If you take DILANTIN during pregnancy, your baby is also at risk for bleeding problems right after birth. Your healthcare provider may give you and your baby medicine to prevent this.

All women of child-bearing age should talk to their healthcare provider about using other possible treatments instead of DILANTIN. If the decision is made to use DILANTIN, you should use effective birth control (contraception) unless you are planning to become pregnant.

Tell your healthcare provider right away if you become pregnant while taking DILANTIN. You and your healthcare provider should decide if you will take DILANTIN while you are pregnant.

Pregnancy Registry: If you become pregnant while taking DILANTIN, talk to your healthcare provider about registering with the North American Antiepileptic Drug Pregnancy Registry. You can enroll in this registry by calling 1-888-233-2334. The purpose of this registry is to collect information about the safety of antiepileptic drugs during pregnancy.

3. Swollen glands (lymph nodes)

Allergic reactions or serious problems which may affect organs and other parts of your body like the liver or blood cells. You may or may not have a rash with these types of reactions. Symptoms can include any of the following:

- swelling of your face, eyes, lips, or tongue
- trouble swallowing or breathing
- a skin rash
- hives
- fever, swollen glands (lymph nodes), or sore throat that do not go away or come and go
- painful sores in the mouth or around your eyes
- yellowing of your skin or eyes
- bruising or bleeding
- severe fatigue or weakness
- severe muscle pain
- frequent infections or an infection that does not go away
- loss of appetite (anorexia)
- nausea or vomiting

Call your healthcare provider right away if you have any of the symptoms listed above.

What is DILANTIN?

DILANTIN is a prescription medicine used to treat tonic-clonic (grand mal), complex partial (psychomotor or temporal lobe) seizures, and to prevent and treat seizures that happen during or after brain surgery.

Who should not take DILANTIN?

Do not take DILANTIN if you:

- are allergic to phenytoin or any of the ingredients in DILANTIN. See the end of this leaflet for a complete list of ingredients in DILANTIN.
- have had an allergic reaction to CEREBYX (fosphenytoin), PEGANONE (ethotoin), or MESANTOIN (mephenytoin).
- take delavirdine

What should I tell my healthcare provider before taking DILANTIN?

Before you take DILANTIN, tell your healthcare provider if you:

- Have or had liver disease
- Have or had porphyria
- Have or had diabetes
- Have or have had depression, mood problems, or suicidal thoughts or behavior
- Are pregnant or plan to become pregnant. If you become

MEDICATION GUIDE

DILANTIN (Di lan' tin) (Phenytoin sodium)

Tablets, Extended Oral Capsules

Read this Medication Guide before you start taking DILANTIN and each time you get a refill. There may be new information. This information does not take the place of talking to your healthcare provider about your medical condition or treatment. If you have any questions about DILANTIN, ask your healthcare provider or pharmacist.

What is the most important information I should know about DILANTIN?

Do not stop taking DILANTIN without first talking to your healthcare provider.

Stopping DILANTIN suddenly can cause serious problems.

DILANTIN can cause serious side effects including:

1. Like other antiepileptic drugs, DILANTIN may cause suicidal thoughts or actions in a very small number of people, about 1 in 500.

Call a healthcare provider right away if you have any of these symptoms, especially if they are new, worse, or worry you:

- thoughts about suicide or dying
- attempts to commit suicide
- new or worse depression
- new or worse anxiety
- feeling agitated or restless
- panic attacks
- trouble sleeping (insomnia)
- new or worse irritability
- acting aggressive, being angry, or violent
- acting on dangerous impulses
- an extreme increase activity and talking (mania)
- other unusual changes in behavior or mood

How can I watch for early symptoms of suicidal thoughts and actions?

- Pay attention to any changes, especially sudden changes, in mood, behaviors, thoughts, or feelings.
- Keep all follow-up visits with your healthcare provider as scheduled.

Call your healthcare provider between visits as needed, especially if you are worried about symptoms.

Do not stop taking DILANTIN without first talking to a healthcare provider.

Stopping DILANTIN suddenly can cause serious problems. Stopping a seizure medicine suddenly in a patient who has epilepsy can cause seizures that will not stop (status epilepticus).

Suicidal thoughts or actions can be caused by things other than medicines. If you have suicidal thoughts or actions, your healthcare provider may check for other causes.

2. Dilantin may harm your unborn baby.

- If you take DILANTIN during pregnancy, your baby is at risk for serious birth defects.
- Birth defects may occur even in children born to women who are not taking any medicines and do not have other risk factors

If you take DILANTIN during pregnancy, your baby is also at risk for bleeding problems right after birth. Your healthcare provider may give you and your baby medicine to prevent this.

All women of child-bearing age should talk to their healthcare provider about using other possible treatments instead of DILANTIN. If the decision is made to use DILANTIN, you should use effective birth control (contraception) unless you are planning to become pregnant.

Tell your healthcare provider right away if you become pregnant while taking DILANTIN. You and your healthcare provider should decide if you will take DILANTIN while you are pregnant.

Pregnancy Registry: If you become pregnant while taking DILANTIN, talk to your healthcare provider about registering with the North American Antiepileptic Drug Pregnancy Registry. You can enroll in this registry by calling 1-888-233-2334. The purpose of this registry is to collect information about the safety of antiepileptic drugs during pregnancy.

3. Swollen glands (lymph nodes)

Allergic reactions or serious problems which may affect organs and other parts of your body like the liver or blood cells. You may or may not have a rash with these types of reactions. Symptoms can include any of the following:

- swelling of your face, eyes, lips, or tongue
- trouble swallowing or breathing
- a skin rash
- hives
- fever, swollen glands (lymph nodes), or sore throat that do not go away or come and go
- painful sores in the mouth or around your eyes
- yellowing of your skin or eyes
- bruising or bleeding
- severe fatigue or weakness
- severe muscle pain
- frequent infections or an infection that does not go away
- loss of appetite (anorexia)
- nausea or vomiting

Call your healthcare provider right away if you have any of the symptoms listed above.

What is DILANTIN?

DILANTIN is a prescription medicine used to treat tonic-clonic (grand mal), complex partial (psychomotor or temporal lobe) seizures, and to prevent and treat seizures that happen during or after brain surgery.

Who should not take DILANTIN?

Do not take DILANTIN if you:

- are allergic to phenytoin or any of the ingredients in DILANTIN. See the end of this leaflet for a complete list of ingredients in DILANTIN.
- have had an allergic reaction to CEREBYX (fosphenytoin), PEGANONE (ethotoin), or MESANTOIN (mephenytoin).
- take delavirdine

What should I tell my healthcare provider before taking DILANTIN?

Before you take DILANTIN, tell your healthcare provider if you:

- Have or had liver disease
- Have or had porphyria
- Have or had diabetes
- Have or have had depression, mood problems, or suicidal thoughts or behavior
- Are pregnant or plan to become pregnant. If you become

pregnant while taking DILANTIN, the level of DILANTIN in your blood may decrease, causing your seizures to become worse. Your healthcare provider may change your dose of DILANTIN.

- Are breast feeding or plan to breastfeed. DILANTIN can pass into breast milk. You and your healthcare provider should decide if you will take DILANTIN or breastfeed. You should not do both.

Tell your healthcare provider about all the medicines you take, including prescription and non-prescription medicines, vitamins, and herbal supplements.

Taking DILANTIN with certain other medicines can cause side effects or affect how well they work. Do not start or stop other medicines without talking to your healthcare provider.

Know the medicines you take. Keep a list of them and show it to your healthcare provider and pharmacist when you get a new medicine.

How should I take DILANTIN?

- Take DILANTIN exactly as prescribed. Your healthcare provider will tell you how much DILANTIN to take.
- Your healthcare provider may change your dose. Do not change your dose of DILANTIN without talking to your healthcare provider.
- DILANTIN can cause overgrowth of your gums. Brushing and flossing your teeth and seeing a dentist regularly while taking DILANTIN can help prevent this.
- If you take too much DILANTIN, call your healthcare provider or local Poison Control Center right away.
- Do not stop taking DILANTIN without first talking to your healthcare provider. Stopping DILANTIN suddenly can cause serious problems.

What should I avoid while taking DILANTIN?

- Do not drink alcohol while you take DILANTIN without first talking to your healthcare provider. Drinking alcohol while taking DILANTIN may change your blood levels of DILANTIN which can cause serious problems.
- Do not drive, operate heavy machinery, or do other dangerous activities until you know how DILANTIN affects you. DILANTIN can slow your thinking and motor skills.

What are the possible side effects of DILANTIN?

See **“What is the most important information I should know about DILANTIN?”**

DILANTIN may cause other serious side effects including:

- Softening of your bones (osteopenia, osteoporosis, and osteomalacia). This can cause broken bones.

Call your healthcare provider right away, if you have any of the symptoms listed above.

The most common side effects of DILANTIN include:

- problems with walking and coordination
- slurred speech
- confusion
- dizziness
- trouble sleeping
- nervousness
- tremor
- headache
- nausea
- vomiting
- constipation
- rash

These are not all the possible side effects of DILANTIN. For more information, ask your healthcare provider or pharmacist.

Tell your healthcare provider if you have any side effect that bothers you or that does not go away.

Call your doctor for medical advice about side effects. You may report side effects to FDA at 1-800-FDA-1088.

How should I store DILANTIN?

- Store DILANTIN INFATABS at room temperature between 68°F to 77°F (20°C to 25°C). Protect from moisture.
- Store DILANTIN Capsules at room temperature between 68°F to 77°F (20°C to 25°C) in tight, light-resistant containers. Protect from moisture.

Keep DILANTIN and all medicines out of the reach of children.

General information about DILANTIN

Medicines are sometimes prescribed for purposes other than those listed in a Medication Guide. Do not use DILANTIN for a condition for which it was not prescribed. Do not give DILANTIN to other people, even if they have the same symptoms that you have. It may harm them.

This Medication Guide summarizes the most important information about DILANTIN. If you would like more information, talk with your healthcare provider. You can ask your healthcare provider or pharmacist for information about DILANTIN that was written for healthcare professionals.

For more information about DILANTIN, visit <http://www.pfizer.com> or call 1-800-438-1985.

What are the ingredients in DILANTIN?

Tablet

Each tablet is a yellow triangular scored chewable tablet.

Active ingredient: 50 mg phenytoin

Inactive ingredients: D & C yellow No. 10, A1 lake, FD&C yellow No. 6, flavor, saccharin sodium, sucrose, talc, and other ingredients.

Extended Oral Capsule

Dilantin 30mg: Each capsule contains a white powder. The small pale pink opaque cap has “PD” imprinted in black ink and the white, opaque body has “Dilantin 30 mg” printed in black ink.

Active ingredient: 30 mg phenytoin sodium

Inactive ingredients: lactose monohydrate, confectioner’s sugar, talc, and magnesium stearate. The capsule shell cap and body contain Titanium Dioxide (cap and body); gelatin (cap and body); D&C yellow No. 10 (cap); FD&C red No. 3 (cap).

Dilantin 100mg: Each capsule contains a white powder. The medium orange cap has “PD” imprinted in black ink and the white, opaque body has “DILANTIN” over “100 mg” printed in black ink.

Active ingredient: 100 mg phenytoin sodium

Inactive ingredients: lactose monohydrate, confectioner’s sugar, talc, and magnesium stearate. The capsule body contains titanium dioxide and gelatin. The capsule cap contains FD&C red No. 28, FD&C yellow No. 6, and gelatin.

This Medication Guide has been approved by the U.S. Food and Drug Administration.



LAB-0586-1.1

Revised January 2012

13830100

pregnant while taking DILANTIN, the level of DILANTIN in your blood may decrease, causing your seizures to become worse. Your healthcare provider may change your dose of DILANTIN.

- Are breast feeding or plan to breastfeed. DILANTIN can pass into breast milk. You and your healthcare provider should decide if you will take DILANTIN or breastfeed. You should not do both.

Tell your healthcare provider about all the medicines you take, including prescription and non-prescription medicines, vitamins, and herbal supplements.

Taking DILANTIN with certain other medicines can cause side effects or affect how well they work. Do not start or stop other medicines without talking to your healthcare provider.

Know the medicines you take. Keep a list of them and show it to your healthcare provider and pharmacist when you get a new medicine.

How should I take DILANTIN?

- Take DILANTIN exactly as prescribed. Your healthcare provider will tell you how much DILANTIN to take.
- Your healthcare provider may change your dose. Do not change your dose of DILANTIN without talking to your healthcare provider.
- DILANTIN can cause overgrowth of your gums. Brushing and flossing your teeth and seeing a dentist regularly while taking DILANTIN can help prevent this.
- If you take too much DILANTIN, call your healthcare provider or local Poison Control Center right away.
- Do not stop taking DILANTIN without first talking to your healthcare provider. Stopping DILANTIN suddenly can cause serious problems.

What should I avoid while taking DILANTIN?

- Do not drink alcohol while you take DILANTIN without first talking to your healthcare provider. Drinking alcohol while taking DILANTIN may change your blood levels of DILANTIN which can cause serious problems.
- Do not drive, operate heavy machinery, or do other dangerous activities until you know how DILANTIN affects you. DILANTIN can slow your thinking and motor skills.

What are the possible side effects of DILANTIN?

See **“What is the most important information I should know about DILANTIN?”**

DILANTIN may cause other serious side effects including:

- Softening of your bones (osteopenia, osteoporosis, and osteomalacia). This can cause broken bones.

Call your healthcare provider right away, if you have any of the symptoms listed above.

The most common side effects of DILANTIN include:

- problems with walking and coordination
- slurred speech
- confusion
- dizziness
- trouble sleeping
- nervousness
- tremor
- headache
- nausea
- vomiting
- constipation
- rash

These are not all the possible side effects of DILANTIN. For more information, ask your healthcare provider or pharmacist.

Tell your healthcare provider if you have any side effect that bothers you or that does not go away.

Call your doctor for medical advice about side effects. You may report side effects to FDA at 1-800-FDA-1088.

How should I store DILANTIN?

- Store DILANTIN INFATABS at room temperature between 68°F to 77°F (20°C to 25°C). Protect from moisture.
- Store DILANTIN Capsules at room temperature between 68°F to 77°F (20°C to 25°C) in tight, light-resistant containers. Protect from moisture.

Keep DILANTIN and all medicines out of the reach of children.

General information about DILANTIN

Medicines are sometimes prescribed for purposes other than those listed in a Medication Guide. Do not use DILANTIN for a condition for which it was not prescribed. Do not give DILANTIN to other people, even if they have the same symptoms that you have. It may harm them.

This Medication Guide summarizes the most important information about DILANTIN. If you would like more information, talk with your healthcare provider. You can ask your healthcare provider or pharmacist for information about DILANTIN that was written for healthcare professionals.

For more information about DILANTIN, visit <http://www.pfizer.com> or call 1-800-438-1985.

What are the ingredients in DILANTIN?

Tablet

Each tablet is a yellow triangular scored chewable tablet.

Active ingredient: 50 mg phenytoin

Inactive ingredients: D & C yellow No. 10, A1 lake, FD&C yellow No. 6, flavor, saccharin sodium, sucrose, talc, and other ingredients.

Extended Oral Capsule

Dilantin 30mg: Each capsule contains a white powder. The small pale pink opaque cap has “PD” imprinted in black ink and the white, opaque body has “Dilantin 30 mg” printed in black ink.

Active ingredient: 30 mg phenytoin sodium

Inactive ingredients: lactose monohydrate, confectioner’s sugar, talc, and magnesium stearate. The capsule shell cap and body contain Titanium Dioxide (cap and body); gelatin (cap and body); D&C yellow No. 10 (cap); FD&C red No. 3 (cap).

Dilantin 100mg: Each capsule contains a white powder. The medium orange cap has “PD” imprinted in black ink and the white, opaque body has “DILANTIN” over “100 mg” printed in black ink.

Active ingredient: 100 mg phenytoin sodium

Inactive ingredients: lactose monohydrate, confectioner’s sugar, talc, and magnesium stearate. The capsule body contains titanium dioxide and gelatin. The capsule cap contains FD&C red No. 28, FD&C yellow No. 6, and gelatin.

This Medication Guide has been approved by the U.S. Food and Drug Administration.



LAB-0586-1.1

Revised January 2012

13830100

Dilantin®

(extended phenytoin sodium capsules, USP)

Phenytoin is not indicated for seizures due to hypoglycemic or other metabolic causes. Appropriate diagnostic procedures should be performed as indicated.

Phenytoin is not effective for absence (petit mal) seizures. If tonic-clonic (grand mal) and absence (petit mal) seizures are present, combined drug therapy is needed.

Serum levels of phenytoin sustained above the optimal range may produce confusional states referred to as “delirium,” “psychosis,” or “encephalopathy,” or rarely irreversible cerebellar dysfunction. Accordingly, at the first sign of acute toxicity, plasma levels are recommended. Dose reduction of phenytoin therapy is indicated if plasma levels are excessive; if symptoms persist, termination is recommended. (See WARNINGS section.)

Information for Patients:

Inform patients of the availability of a Medication Guide, and instruct them to read the Medication Guide prior to taking Dilantin. Instruct patients to take Dilantin only as prescribed.

Patients taking phenytoin should be advised of the importance of adhering strictly to the prescribed dosage regimen, and of informing the physician of any clinical condition in which it is not possible to take the drug orally as prescribed, e.g., surgery, etc.

Patients should be made aware of the early toxic signs and symptoms of potential hematologic, dermatologic, hypersensitivity, or hepatic reactions. These symptoms may include, but are not limited to, fever, sore throat, rash, ulcers in the mouth, easy bruising, lymphadenopathy and petechial or purpuric hemorrhage, and in the case of liver reactions, anorexia, nausea/vomiting, or jaundice. The patient should be advised that, because these signs and symptoms may signal a serious reaction, that they must report any occurrence immediately to a physician. In addition, the patient should be advised that these signs and symptoms should be reported even if mild or when occurring after extended use.

Patients should also be cautioned on the use of other drugs or alcoholic beverages without first seeking the physician’s advice.

The importance of good dental hygiene should be stressed in order to minimize the development of gingival hyperplasia and its complications.

Patients, their caregivers, and families should be counseled that AEDs, including Dilantin, may increase the risk of suicidal thoughts and behavior and should be advised of the need to be alert for the emergence or worsening of symptoms of depression, any unusual changes in mood or behavior, or the emergence of suicidal thoughts, behavior, or thoughts about self-harm. Behaviors of concern should be reported immediately to healthcare providers.

Patients should be encouraged to enroll in the North American Antiepileptic Drug (NAAED) Pregnancy Registry if they become pregnant. This registry is collecting information about the safety of antiepileptic drugs during pregnancy. To enroll, patients can call the toll free number 1-888-233-2334 (see PRECAUTIONS: Pregnancy section).

Do not use capsules which are discolored.

Laboratory Tests: Phenytoin serum level determinations may be necessary to achieve optimal dosage adjustments. Phenytoin doses are usually selected to attain therapeutic plasma total phenytoin concentrations of 10 to 20 µg/mL (unbound phenytoin concentrations of 1 to 2 µg/mL).

Drug Interactions: Phenytoin is extensively bound to serum plasma proteins and is prone to competitive displacement. Phenytoin is metabolized by hepatic cytochrome P450 enzymes CYP2C9 and CYP2C19, and is particularly susceptible to inhibitory drug interactions because it is subject to saturable metabolism. Inhibition of metabolism may produce significant increases in circulating phenytoin concentrations and enhance the risk of drug toxicity. Phenytoin is a potent inducer of hepatic drug-metabolizing enzymes. Serum level determinations for phenytoin are especially helpful when possible drug interactions are suspected.

The most commonly occurring drug interactions are listed below:

Note: The list is not intended to be inclusive or comprehensive. Individual drug package inserts should be consulted.

Drugs that affect phenytoin concentrations:

- Drugs, which may increase phenytoin serum levels, include: acute alcohol intake, amiodarone, anti-epileptic agents (felbamate, topiramate, oxcarbazepine), azoles (fluconazole, ketoconazole, itraconazole, voriconazole), chloramphenicol, chlordiazepoxide, cimetidine, diazepam, disulfiram, estrogens, ethosuximide, flurouracil, fluvoxamine, fluvoxamine, H2-antagonists, halothane, isoniazid, methyphenidate, omeprazole, phenothiazines, salicylates, sertraline, succinimides, sulfonamides, tololodine, tolbutamide, trazodone, and warfarin.
- Drugs, which may decrease phenytoin levels, include: carbamazepine, chronic alcohol abuse, neflirinavir, reserpine, ritonavir, and sulcalate.
- Ingestion times of phenytoin and antacid preparations containing calcium should be staggered in patients with low serum phenytoin levels to prevent absorption problems.
- Drugs, which may either increase or decrease phenytoin serum levels, include: phenobarbital, sodium valproate, and valproic acid. Similarly, the effect of phenytoin on phenobarbital, valproic acid, and sodium valproate serum levels is unpredictable.
- The addition or withdrawal of these agents in patients on phenytoin therapy may require an adjustment of the phenytoin dose to achieve optimal clinical outcome.

Drugs affected by phenytoin:

- Drugs that should not be coadministered with phenytoin: delavirdine
- Drugs whose efficacy is impaired by phenytoin include: azoles (fluconazole, ketoconazole, itraconazole, voriconazole), corticosteroids, doxycycline, estrogens, furosemide, imitrex, oral contraceptives, pacifloxacin, paroxetine, quinine, rifampin, sertraline, teniposide, theophylline, vitamin D, and warfarin.
- Increased and decreased PT/INR responses have been reported when phenytoin is coadministered with warfarin.
- Phenytoin decreases plasma concentrations of certain HIV antivirals (amprenavir, efavirenz, Kaletra (lopinavir/ritonavir), indinavir, nelfinavir, ritonavir, saquinavir), and anti-epileptic agents (felbamate, topiramate, oxcarbazepine, zonisamide).
- The addition or withdrawal of phenytoin during concomitant therapy with these agents may require adjustment of the dose of these agents to achieve optimal clinical outcome.

Drug Enteral Feeding/Nutritional Preparations Interaction: Literature reports suggest that patients who have received enteral feeding preparations and/or related nutritional supplements have lower than expected phenytoin plasma levels. It is therefore suggested that phenytoin not be administered concomitantly with an enteral feeding preparation. More frequent serum phenytoin level monitoring may be necessary in these patients.

Drug/Laboratory Test Interactions: Phenytoin may decrease serum concentrations of T4. It may also produce lower than normal values for dexamethasone or metyrapone tests. Phenytoin may cause increased serum levels of glucose, alkaline phosphatase, and gamma glutamyl transpeptidase (GGT).

Dilantin®

(extended phenytoin sodium capsules, USP)

Care should be taken when using immunoanalytical methods to measure plasma phenytoin concentrations.

Carcinogenesis: See WARNINGS section for information on carcinogenesis.

Pregnancy: Pregnancy Category D. See WARNINGS section.

To provide information regarding the effects of in utero exposure to Dilantin, physicians are advised to recommend that pregnant patients taking Dilantin enroll in the NAAED Pregnancy Registry. This can be done by calling the toll free number 1-888-233-2334, and must be done by patients themselves. Information on the registry can also be found at the website <http://www.aedpregnancyregistry.org/>.

Nursing Mothers: Infant breast-feeding is not recommended for women taking this drug because phenytoin appears to be secreted in low concentrations in human milk.

Pediatric Use: See DOSAGE AND ADMINISTRATION section.

Geriatric Use: Phenytoin clearance tends to decrease with increasing age (see CLINICAL PHARMACOLOGY: Special Populations).

ADVERSE REACTIONS

Body as a Whole: Allergic reactions in the form of rash and rarely more serious forms (see Skin and Appendages paragraph below) and DRESS (see WARNINGS) have been observed. Anaphylaxis has also been reported.

There have also been reports of coarsening of facial features, symmetric lupus erythematosus, periarteritis nodosa, and immunoglobulin abnormalities.

Nervous System: The most common manifestations encountered with phenytoin therapy are referable to this system and are usually dose-related. These include nystagmus, ataxia, slurred speech, decreased coordination, somnolence, and mental confusion. Dizziness, insomnia, transient nervousness, motor twitches, paresthesias, and headaches have also been observed. There have also been rare reports of phenytoin induced dyskinesias, including chorea, dystonia, tremor, and asterixis, similar to those induced by phenothiazine and other neuroleptic drugs.

A predominantly sensory peripheral polyneuropathy has been observed in patients receiving long-term phenytoin therapy.

Digestive System: Nausea, vomiting, constipation, enlargement of the lips, gingival hyperplasia, toxic hepatitis, and liver damage.

Skin and Appendages: Dermatological manifestations sometimes accompanied by fever have included scarlatiniform or morbilliform rashes. A morbilliform rash (measles-like) is the most common; other types of dermatitis are seen more rarely. Other more serious forms which may be fatal have included bullous, exfoliative or purpuric dermatitis, Stevens-Johnson syndrome, and toxic epidermal necrolysis (see WARNINGS section). There have also been reports of hypertrichosis.

Hematologic and Lymphatic System: Hematopoietic complications, some fatal, have occasionally been reported in association with administration of phenytoin. These have included thrombocytopenia, leukopenia, granulocytopenia, agranulocytosis, and pancytopenia with or without bone marrow suppression. While macrocytosis and megaloblastic anemia have occurred, these conditions usually respond to folic acid therapy. Lymphadenopathy including benign lymph node hyperplasia, pseudolymphoma, lymphoma, and Hodgkin’s disease has been reported (see WARNINGS section).

Special Senses: Altered taste sensation including metallic taste.

Urogenital: Peyronie’s disease

OVERDOSAGE

The lethal dose in pediatric patients is not known. The lethal dose in adults is estimated to be 2 to 5 grams. The initial symptoms are nystagmus, ataxia, and dysarthria. Other signs are tremor, hyperreflexia, lethargy, slurred speech, nausea, vomiting. The patient may become comatose and hypotensive. Death is due to respiratory and circulatory depression.

There are marked variations among individuals with respect to phenytoin plasma levels where toxicity may occur. Nystagmus, on lateral gaze, usually appears at 20 mcg/mL, ataxia at 30 mcg/mL, dysarthria and lethargy appear when the plasma concentration is over 40 mcg/mL, but as high a concentration as 50 mcg/mL has been reported without evidence of toxicity. As much as 25 times the therapeutic dose has been taken to result in a serum concentration over 100 mcg/mL with complete recovery.

Treatment: Treatment is nonspecific since there is no known antidote.

The adequacy of the respiratory and circulatory systems should be carefully observed and appropriate supportive measures employed. Hemodialysis can be considered since phenytoin is not completely bound to plasma proteins. Total exchange transfusion has been used in the treatment of severe intoxication in pediatric patients.

In acute overdosage, the possibility of other CNS depressants, including alcohol, should be borne in mind.

DOSAGE AND ADMINISTRATION

Serum concentrations should be monitored in changing from Dilantin (extended phenytoin sodium capsules, USP) to Prompt Phenytoin Sodium Capsules, USP, and from the sodium salt to the free acid form.

Dilantin (extended phenytoin sodium capsules, USP) are formulated with the sodium salt of phenytoin. The free acid form of phenytoin is used in Dilantin-125 Suspension and Dilantin Infatabs. Because there is approximately an 8% increase in drug content with the free acid form over that of the sodium salt, dosage adjustments and serum level monitoring may be necessary when switching from a product formulated with the free acid to a product formulated with the sodium salt and vice versa.

General: Dosage should be individualized to provide maximum benefit. In some cases, serum blood level determinations may be necessary for optimal dosage adjustments—the clinically effective serum level is usually 10–20 mcg/mL. With recommended dosage, a period of seven to ten days may be required to achieve steady-state blood levels with phenytoin and changes in dosage (increase or decrease) should not be carried out at intervals shorter than seven to ten days.

Adult Dosage:

Divided daily dosage: Patients who have received no previous treatment may be started on one 100-mg Dilantin (extended phenytoin sodium capsule, USP) three times daily and the dosage then adjusted to suit individual requirements. For most adults, the satisfactory maintenance dosage will be one capsule three to four times a day. An increase up to two capsules three times a day may be made, if necessary.

Once-a-day dosage: In adults, if seizure control is established with divided doses of three 100-mg Dilantin (extended phenytoin sodium capsules, USP) daily, once-a-day dosage with 300 mg of Dilantin (extended phenytoin sodium capsules, USP) may be considered. Studies comparing divided doses of 300 mg with a single daily dose of this quantity indicated absorption, peak plasma levels, biologic half-life, difference between peak and minimum values, and urinary recovery were equivalent. Once-a-day dosage offers a convenience to the individual patient or to nursing personnel for institutionalized patients and is intended to be used only for patients requiring this amount of drug daily.

This is a representation of an electronic record that was signed electronically and this page is the manifestation of the electronic signature.

/s/

CHI-ANN Y WU
11/27/2012
For Wm. Peter Rickman