

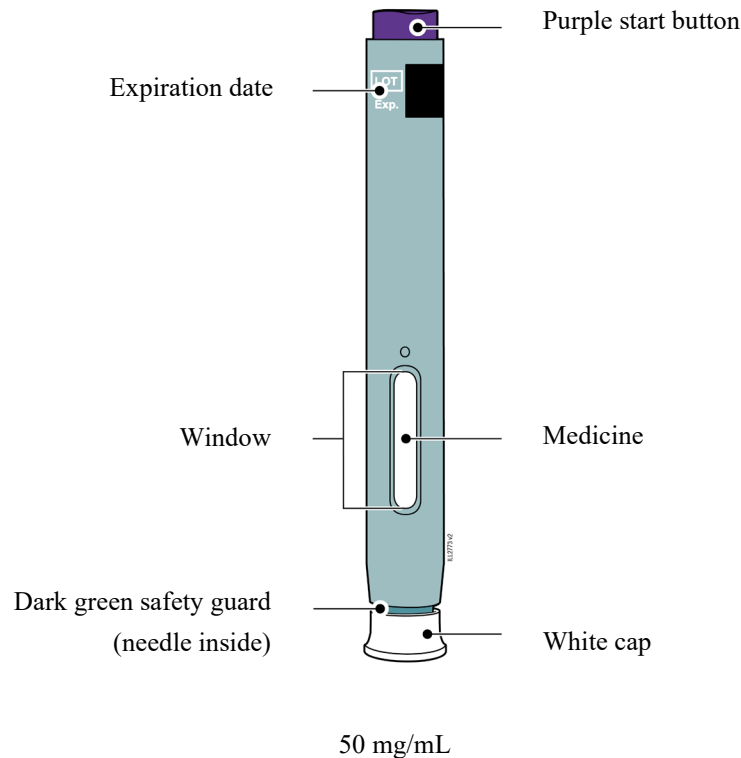
INSTRUCTIONS FOR USE
ENBREL® [en-brel]
(etanercept)
injection, for subcutaneous use
50 mg/mL
single-dose prefilled SureClick® autoinjector

This Instructions for Use contains information on how to inject ENBREL with a SureClick autoinjector.

If your healthcare provider decides that you or a caregiver may be able to give your injections of ENBREL at home, you should receive training on the right way to prepare and inject ENBREL. Do not try to inject yourself until you have been shown the right way to give the injections by your healthcare provider or nurse.

The medicine in the ENBREL autoinjector is for injection under the skin (subcutaneous injection). See the ENBREL Medication Guide for information about ENBREL.

Getting to know the prefilled autoinjector



Important Information You Need to Know Before Injecting ENBREL

- It is important that you do not try to give the injection until you have fully read and understood this Instructions for Use.
- Check the autoinjector label and prescription to make sure you have the correct medicine and dose.
- **Do not** use the autoinjector if the carton is damaged or the seal is broken.
- **Do not** use the autoinjector after the expiration date on the label.
- **Do not** shake the autoinjector.
- **Do not** remove the white cap from the autoinjector until you are ready to inject.
- **Do not** use the autoinjector if it has been frozen.

- **Do not** use the autoinjector if it has been dropped on a hard surface. Part of the autoinjector may be broken even if you cannot see the break. Use a new autoinjector, and call 1-888-4ENBREL (1-888-436-2735).
- **Children must weigh at least 138 pounds to use the ENBREL SureClick autoinjector. Children who weigh less than 138 pounds should use a different form of ENBREL.**
- The autoinjector is not made with natural rubber latex.

Frequently asked questions:

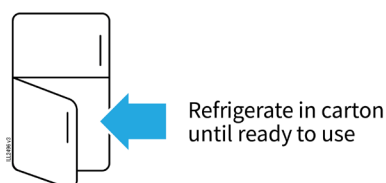
For additional information and answers to frequently asked questions, visit www.enbrel.com.

Where to get help:

If you want more information or help using ENBREL:

- Contact your healthcare provider,
- Visit www.enbrel.com, or
- Call 1-888-4ENBREL (1-888-436-2735).

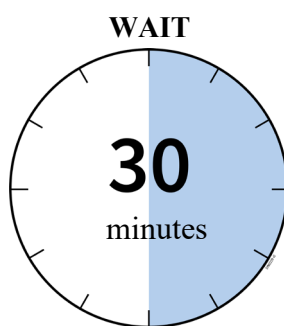
Storing and Preparing to Inject ENBREL



1 Refrigerate the autoinjector carton until you are ready to use it.

- Keep the autoinjector in the refrigerator between 36°F to 46°F (2°C to 8°C).
- Keep the autoinjector in the original carton to protect it from light or physical damage.
- **Do not** freeze the autoinjector.
- **Do not** store the autoinjector in extreme heat or cold. For example, avoid storing in your vehicle's glove box or trunk.

Important: Keep the autoinjector and all medicines out of the sight and reach of children.



2 Wait 30 minutes for the autoinjector to reach room temperature.

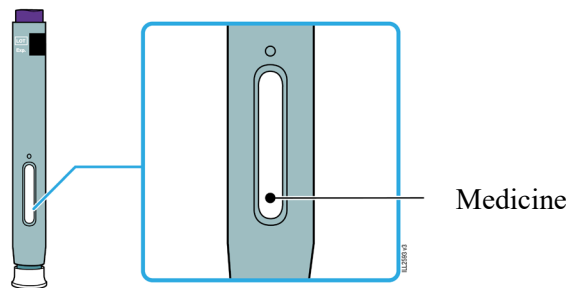
- Remove the autoinjector and put any unused autoinjectors back into the refrigerator.
- Let the autoinjector warm up naturally.
- **Do not** heat the autoinjector with hot water, a microwave, or direct sunlight.
- **Do not** shake the autoinjector at any time.
- Using the autoinjector at room temperature makes sure the full dose is delivered and allows for a more comfortable injection.



3 You may keep ENBREL at room temperature for up to 30 days, if needed.

- For example, when you are traveling, you may keep ENBREL at room temperature.
- Keep it at room temperature between 68°F to 77°F (20°C to 25°C).
- **Do not** put it back in the refrigerator.
- Record the date you removed it from the refrigerator and use it within **30** days.

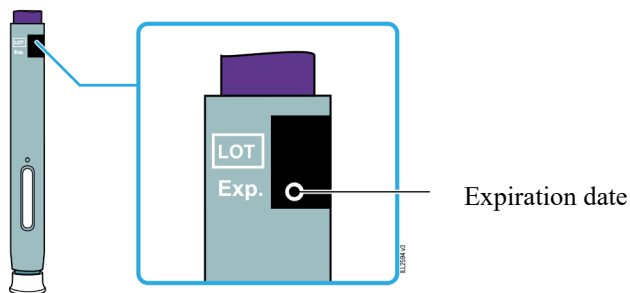
Important: Place the autoinjector in a sharps disposal container if it has reached room temperature and has not been used within **30** days.



4 Inspect the medicine. It should be clear and colorless to slightly yellow.

- It is okay to see air bubbles or small white particles in the medicine.
- **Do not** use the autoinjector if the medicine is cloudy, discolored, or contains large lumps, flakes or colored particles.

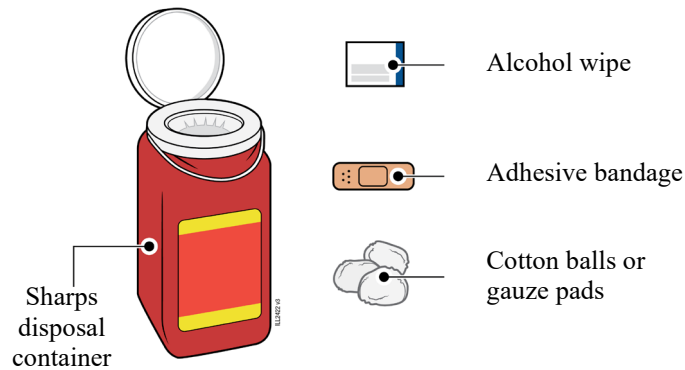
Important: If the medicine is cloudy, discolored, or contains large lumps, flakes or colored particles, or if the autoinjector is damaged or expired, call 1-888-4ENBREL (1-888-436-2735).



5 Check the expiration date (Exp.) and inspect the autoinjector for damage.

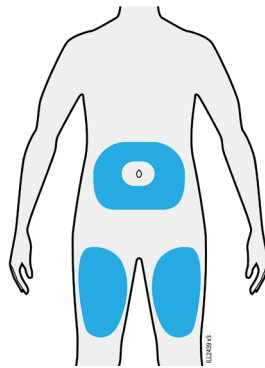
- **Do not** use the autoinjector if the expiration date has passed.
- **Do not** use the autoinjector if:
 - the white cap is missing or loose in carton,
 - it has cracks or broken parts, or
 - it has been dropped on a hard surface.

Getting Ready to Inject ENBREL



6 Gather and place the following items for your injection on a clean, flat, and well-lit surface:

- ENBREL autoinjector (room temperature),
- Sharps disposal container [see Completing the Injection and Disposal],
- Alcohol wipe,
- Adhesive bandage, and
- Cotton balls or gauze pads.



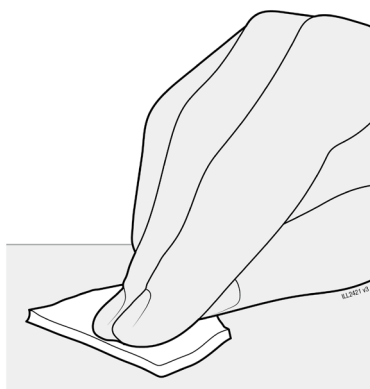
7 Select 1 of these injection sites.

- Select the thigh or stomach (except for 2 inches around the belly button).
- Someone else can inject in your thigh, stomach, or back of the upper arm.
- Change injection site each time, shifting the area of the injection to avoid skin irritation.

Important: Avoid areas with scars or stretch marks, or where the skin is tender, bruised, red, hard, raised, thick or scaly skin patch, or lesion.



8 Wash your hands thoroughly with soap and water.



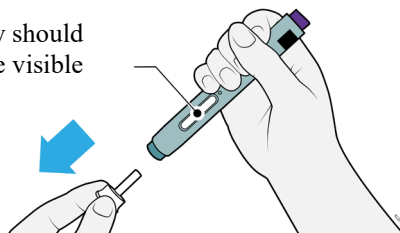
9 Clean the injection site with an alcohol wipe.

- Let the skin dry on its own.
 - **Do not** touch this area again before injecting.
-

Injecting ENBREL

Important: Only remove the white cap when you can inject right away (within 5 minutes) because the medicine can dry out. **Do not** recap.

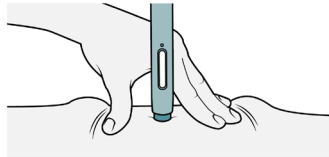
Window should
be visible



10 Grasp the autoinjector so you can see the window. Pull the white cap straight off. You may need to pull hard.

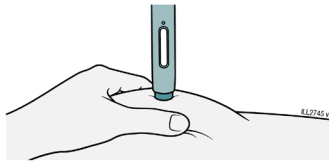
- **Do not** twist, bend, or wiggle the white cap to pull it off.
 - **Never** put the white cap back on. It may damage the needle.
 - **Do not** put your finger inside the dark green safety guard.
 - It is normal to see a drop of medicine come out of the needle or dark green safety guard.
-

STRETCH



OR

PINCH

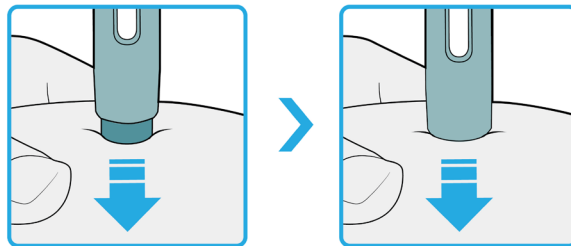


11

Stretch or pinch the skin to create a firm surface at the injection site until the injection is finished. Place the dark green safety guard straight against the skin.

- Make sure you can see the window.
- Make sure the autoinjector is positioned straight on the injection site (at a 90-degree angle).

**PUSH
and hold against skin**

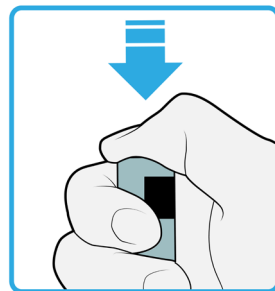


12

Firmly push the autoinjector down until the dark green safety guard stops moving. Hold the autoinjector down, do not lift.

- The dark green safety guard pushes in and unlocks the purple start button.

**PRESS
purple start button**

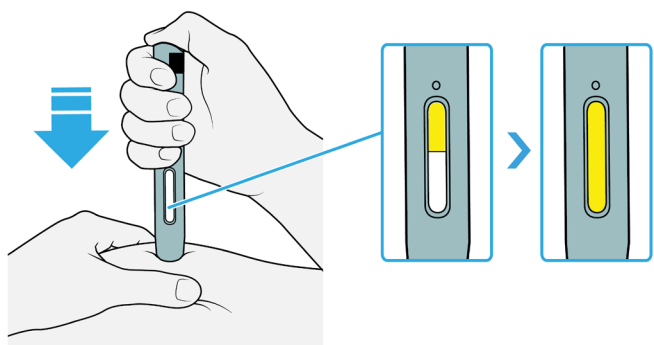


13

Keep pushing the autoinjector down and press the purple start button to start the injection.

- You may hear or feel a click.
- The window starts to turn yellow.
- It is okay to let go of the purple start button.

WATCH
window will turn fully yellow

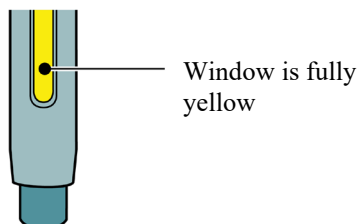


14 Keep pushing the autoinjector down. Wait for the window to turn fully yellow.

- The injection may take up to **15** seconds to complete.
- You may hear or feel a click.
- After the window turns fully yellow, lift the autoinjector away from the skin.
- The dark green safety guard locks around the needle.

Completing the Injection and Disposal

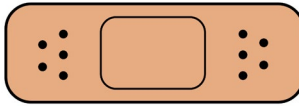
CONFIRM



15 Confirm a full dose of medicine was injected.

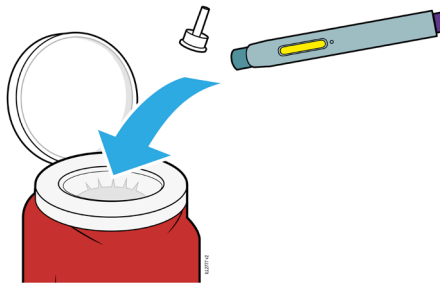
- **Do not** touch the dark green safety guard.
- A small drop of liquid on the injection site is okay.

Important: If the window has not turned fully yellow or if it looks like the medicine is still coming out, a full dose was not injected. Call your healthcare provider right away.



16 Check the injection site.

- **Do not** rub the injection site.
- If there is blood, press a cotton ball or gauze pad on your injection site.
- Apply an adhesive bandage if necessary.



17 Place the used autoinjector and white cap in an FDA-cleared sharps disposal.

Important: Do not throw away the autoinjector in your household trash.

- **Do not** reuse the autoinjector.
- **Do not** touch the dark green safety guard.

Additional information about your sharps disposal container

If you do not have an FDA-cleared sharps disposal container, you may use a household container that is:

- made of a heavy-duty plastic,
- can be closed with a tight-fitting, puncture-resistant lid, without sharps being able to come out,
- upright and stable during use,
- leak-resistant, and
- properly labeled to warn of hazardous waste inside the container.

Disposing of sharps disposal containers:

When your sharps disposal container is almost full, you will need to follow your community guidelines for the right way to dispose of your sharps disposal container.

There may be state or local laws about how you should throw away used needles and syringes.

For more information about safe sharps disposal, and for specific information about sharps disposal in the state that you live in, go to the FDA's website at:

<http://www.fda.gov/safesharpsdisposal>

Do not dispose of your used sharps disposal container in your household trash unless your community guidelines permit this.

Do not recycle your used sharps disposal container.

Keep the autoinjector and sharps disposal container out of the sight and reach of children.

For more information or help call 1-888-4ENBREL (1-888-436-2735).

ENBREL (etanercept)

The logo for Amgen, consisting of the word "AMGEN" in a bold, black, sans-serif font. The letters are closely spaced and have a slightly irregular, blocky appearance.

Manufactured by:

Immunex Corporation

Thousand Oaks, CA 91320-1799

U.S. License Number 1132

©1998-2016, 2019-202X Immunex Corporation. All rights reserved.

1XXXXXX

This Instructions for Use has been approved by the U.S. Food and Drug Administration.

Revised: 06/2025

REFERENCE GUIDE

Side
1

Reference Guide

Enbrel® [en-brel]
(etanercept)
injection, for subcutaneous use
50 mg/mL

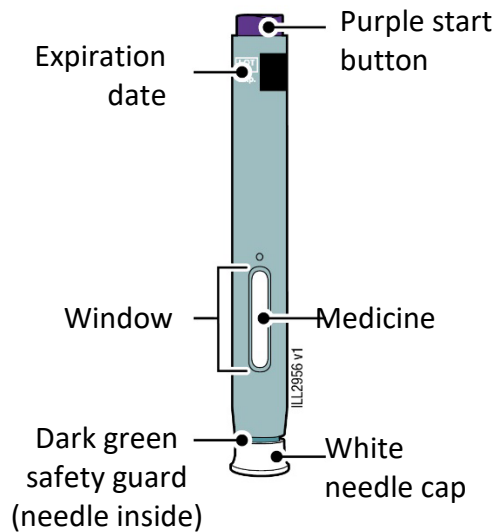
**Read Instructions for Use
in carton before injecting**

Questions?

Call 1-888-4ENBREL
(1-888-436-2735)

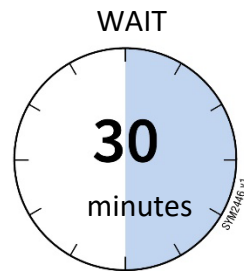


1. Guide to parts

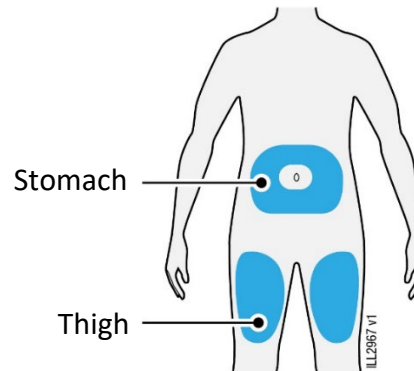


2. Wait 30 minutes

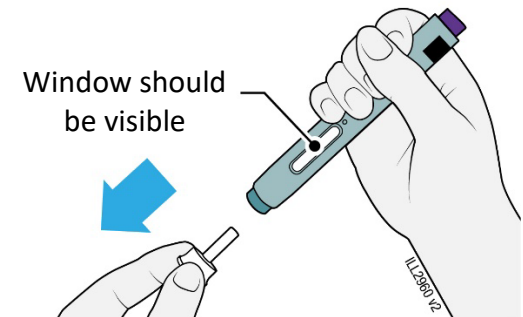
for the autoinjector to reach room temperature before giving your injection.



3. Prepare and clean your injection site.



4. Pull the white cap straight off when you are ready to inject within 5 minutes – the medicine can dry out.



Turn over to continue

Read other side first


Side
2

Reference Guide

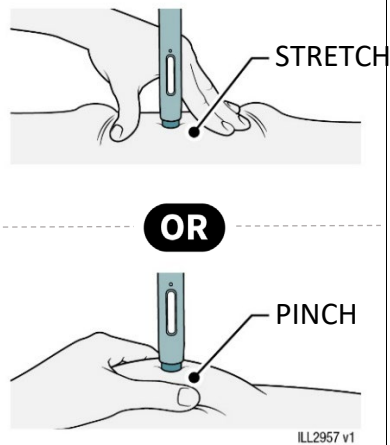
Enbrel® [en-brel]
(etanercept)
injection, for subcutaneous use
50 mg/mL

AMGEN

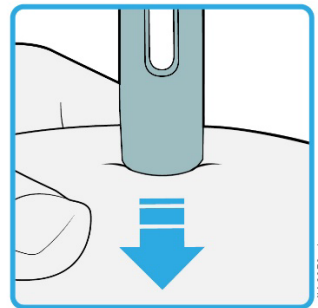
Manufactured by:
Immunex Corporation
Thousand Oaks, CA 91320
© 1998-2016, 2019-202X
Immunex Corporation
All rights reserved.
XXXXXXX

 This printed material
is recyclable.

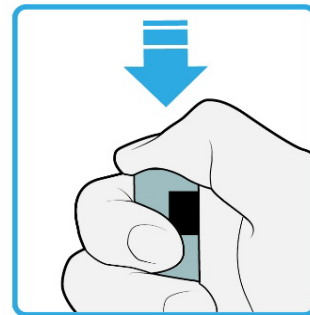
5. Stretch or pinch the skin to create a firm surface at the injection site until the injection is finished.



6. PUSH and HOLD down against the skin. Do not lift.

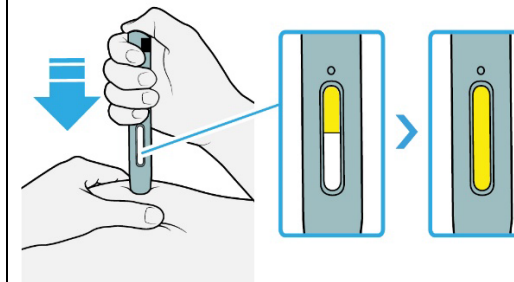


7. PRESS purple start button.



8. Keep pushing down for up to 15 seconds.

Wait for the window to turn fully yellow, then your injection is done.



Revised: 06/2025



4567891011

SureClick® Autoinjector
50 mg/mL
Single-Dose Prefilled Autoinjector
For Subcutaneous Use Only
Single-dose

Store carton in refrigerator at 36°F to 46°F (2°C to 8°C).
Do Not Freeze or Shake. Store in Carton to Protect from Light.

Carton contents: (4 Prefilled SureClick® Autoinjectors, 1 Package Insert, 1 Instructions for Use with Medication Guide) are intended to be dispensed and used as a unit.

Each single-dose prefilled autoinjector contains 1 mL of a clear and colorless solution containing 50 mg/mL etanercept and is formulated at pH 6.3 ± 0.2, with 25 mM L-arginine hydrochloride, 120 mM sodium chloride, and 1% sucrose.
Specific activity: approximately 1.7 x 10⁶ U/mg.

See package insert for full drug prescribing information.
No U.S. standard of potency
Manufactured by Immunex Corporation, Thousand Oaks, CA 91320-1799
U.S. License No. 1132
©2015, 2017, 2022-2023 Immunex Corporation
Patent: <http://pat.amgen.com/enbrel/>

 This carton is recyclable.

 **CAUTION. See package insert for full prescribing information and instructions for use**

 Do not re-use

 Refrigerate until ready to use

4 Single-dose Prefilled SureClick® Autoinjectors

50 mg/mL

Refrigerate until ready to use

ENB
S/N
LOT
Exp.



0 400000 400000 0

50 mg/mL



50 mg/mL
Single-dose Prefilled Autoinjector
Attention: Not for use in pediatric patients under 63 kg (138 pounds)

For Subcutaneous Use Only

Sterile Solution - No Preservative
Refrigerate at 36°F to 46°F (2°C to 8°C), DO NOT FREEZE.
ATTENTION: Enclosed Medication Guide is required for each patient.

 **CAUTION. See package insert for full prescribing information and instructions for use**

 Keep out of the sight and reach of children.

 Do not re-use

 Refrigerate until ready to use



ENBRElinjection.com

Rx Only

4 Single-dose Prefilled SureClick® Autoinjectors

50 mg/mL

Refrigerate until ready to use



Push Here to Open

Do not use if carton seal is broken

Refrigerate until ready to use

*We're right here,
right when you need us.*


Personalized patient support
designed for you

AMGEN Support+

With financial support resources and other helpful patient services, we are here to help you along the way.

Call 1-888-4ENBREL (1-888-436-2735)
or visit www.enbrel.com/support.



 Be sure to read the instructions for use. You can find them in this box.



K407435

Not for Sale

SureClick® Autoinjector
50 mg/mL
Single-Dose Prefilled Autoinjector
For Subcutaneous Use Only

Single-dose
Store carton in refrigerator at 36°F to 46°F (2°C to 8°C).
Do Not Freeze or Shake. Store in Carton to Protect from Light.

Carton contents (1 single-dose prefilled SureClick® Autoinjector, 1 Package Insert, 1 Instructions for Use with Medication Guide) are intended to be dispensed and used as a unit.
Each single-dose prefilled autoinjector contains 1 mL of a clear and colorless solution containing 50 mg/mL etanercept and is formulated at pH 6.3 ± 0.2, with 25 mM L-arginine hydrochloride, 120 mM sodium chloride, and 1% sucrose.
Specific activity: approximately 1.7 x 10⁶ U/mg.
See package insert for full drug prescribing information.
No U.S. standard of potency
Manufactured by Immunex Corporation, Thousand Oaks, CA 91320-1799
U.S. License No. 1132
©2015, 2017, 2022-202X Immunex Corporation
Patent: <http://pat.amgen.com/enbrel/>
This carton is recyclable.

CAUTION, See package insert for full prescribing information and instructions for use

Do not re-use

Refrigerate until ready to use



Life
Exp.

0 00000 00000 0

1 x Single-Dose Prefilled Autoinjector

NDC 58406-032-96

1 Single-dose Prefilled SureClick® Autoinjector

50 mg/mL

Refrigerate until ready to use

Not for Sale



50 mg/mL

Enbrel
etanercept

50 mg/mL
Single-dose Prefilled Autoinjector

For Subcutaneous Use Only

Sterile Solution - No Preservative
Refrigerate at 36°F to 46°F (2°C to 8°C). **DO NOT FREEZE.**

ATTENTION: Enclosed Medication Guide is required for each patient.

CAUTION, See package insert for full prescribing information and instructions for use

Keep out of the sight and reach of children

Do not re-use

Refrigerate until ready to use

Not for Sale

ENBRElinjection.com

Rx Only

1 Single-dose Prefilled SureClick® Autoinjector

50 mg/mL

Refrigerate until ready to use

Not for Sale

1 Single-dose Prefilled SureClick® Autoinjector

50 mg/mL

Refrigerate until ready to use

Not for Sale

Push Here to Clean



Do not use if carton seal is broken

Refrigerate until ready to use

Not for Sale

1 Single-dose Prefilled SureClick® Autoinjector

50 mg/mL

Refrigerate until ready to use

Not for Sale

*We're right here,
right when you need us.*

Personalized patient support
designed for you

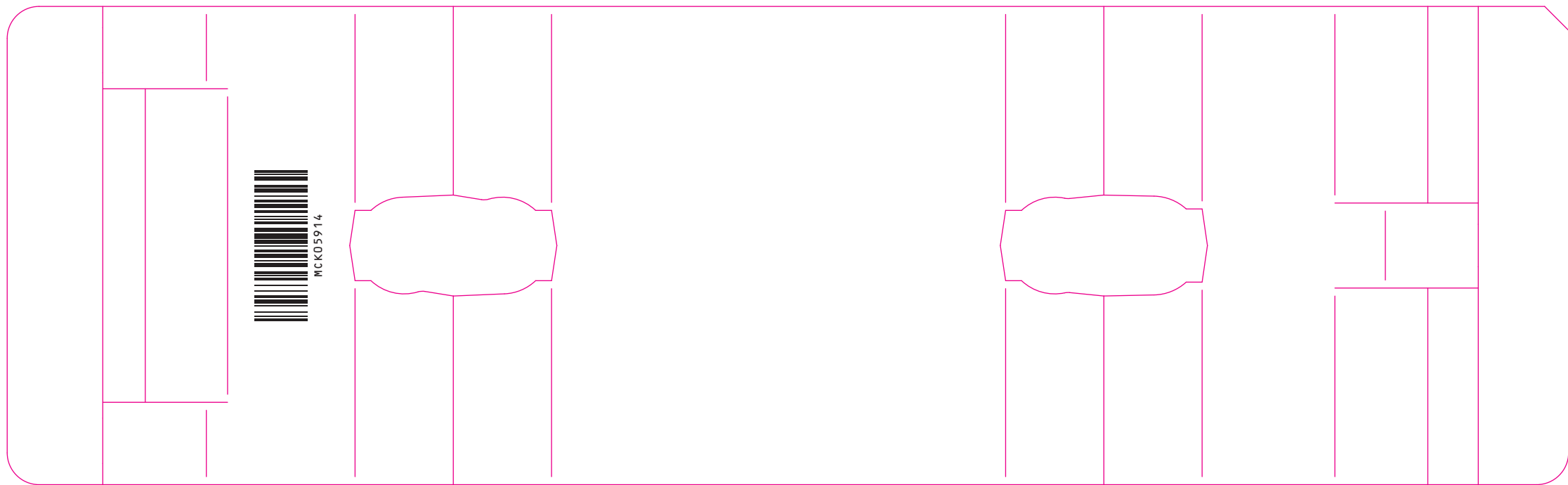
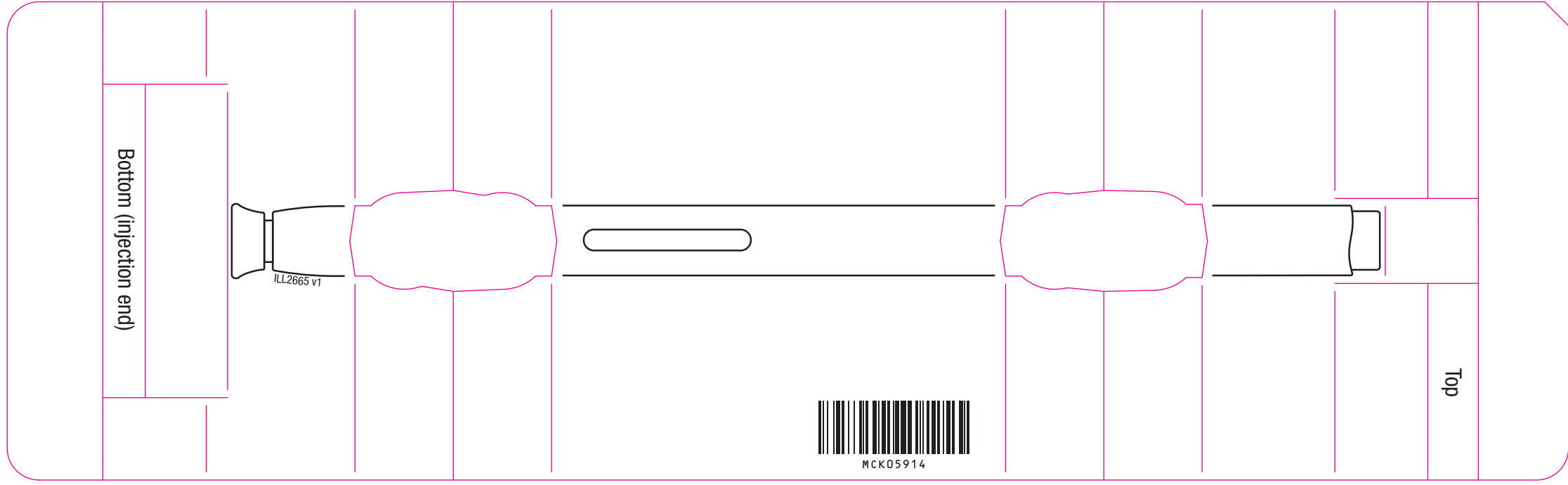
AMGEN Support⁺

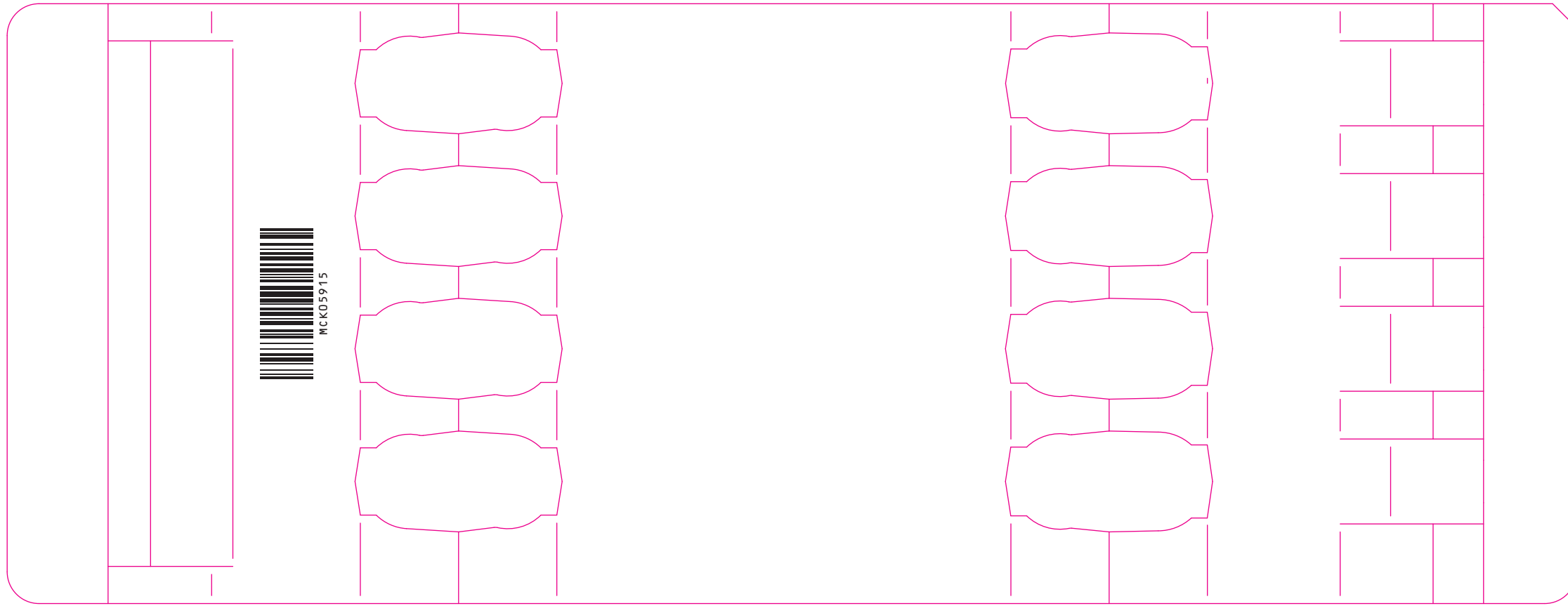
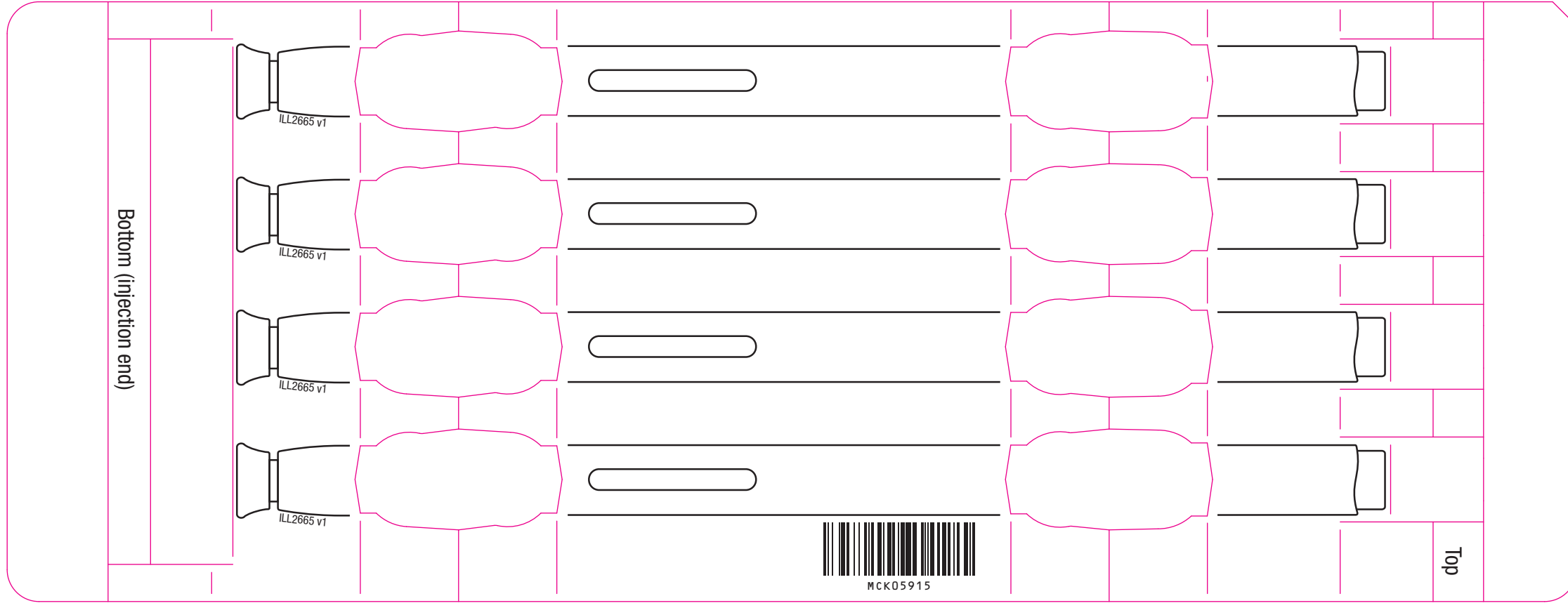
With financial support resources and other helpful patient services, we are here to help you along the way.

Call 1-888-4ENBREL (1-888-436-2735)
or visit www.enbrel.com/support.



Be sure to read the instructions for use. You can find them in this box.





This is a representation of an electronic record that was signed electronically. Following this are manifestations of any and all electronic signatures for this electronic record.

/s/

RAJ NAIR
06/18/2025 01:29:13 PM