

## HIGHLIGHTS OF PRESCRIBING INFORMATION

These highlights do not include all the information needed to use REPATHA® safely and effectively. See full prescribing information for REPATHA.

**REPATHA (evolocumab) injection, for subcutaneous use**  
**Initial U.S. Approval: 2015**

### RECENT MAJOR CHANGES

Indications and Usage (1)	02/2021
Dosage and Administration (2.1, 2.3)	02/2021
Dosage and Administration (2.2)	05/2020
Contraindications (4)	02/2021
Warnings and Precautions (5.1)	02/2021

### INDICATIONS AND USAGE

REPATHA is a PCSK9 (proprotein convertase subtilisin kexin type 9) inhibitor indicated:

- in adults with established cardiovascular disease (CVD) to reduce the risk of myocardial infarction, stroke, and coronary revascularization (1)
- as an adjunct to diet, alone or in combination with other low-density lipoprotein cholesterol (LDL-C)-lowering therapies, in adults with primary hyperlipidemia, including heterozygous familial hypercholesterolemia (HeFH), to reduce LDL-C (1)
- as an adjunct to other LDL-C-lowering therapies in patients with homozygous familial hypercholesterolemia (HoFH), to reduce LDL-C (1)

### DOSAGE AND ADMINISTRATION

In adults with established CVD or with primary hyperlipidemia:

- The recommended dosage of REPATHA is either 140 mg every 2 weeks OR 420 mg once monthly administered subcutaneously. (2.1)
- If switching dosage regimens, administer the first dose of the new regimen on the next scheduled date of the prior regimen. (2.1)

In patients with HoFH:

- The initial recommended dosage of REPATHA is 420 mg once monthly administered subcutaneously. (2.1)
- The dosage can be increased to 420 mg every 2 weeks if a clinically meaningful response is not achieved in 12 weeks. (2.1)
- Patients on lipid apheresis may initiate treatment with 420 mg every 2 weeks to correspond with their apheresis schedule. Administer REPATHA after the apheresis session is complete. (2.1)

- Assess LDL-C when clinically appropriate. The LDL-lowering effect of REPATHA may be measured as early as 4 weeks after initiation. (2.1)
- Advise latex-sensitive patients that the needle cover of the glass single-dose prefilled syringe and the single-dose prefilled autoinjector contain dry natural rubber, a derivative of latex. (2.3)
- Administer REPATHA subcutaneously into areas of the abdomen, thigh, or upper arm. Rotate injection sites for each administration. (2.3)
- See Full Prescribing Information for important administration instructions. (2.3)

### DOSAGE FORMS AND STRENGTHS

- Injection: 140 mg/mL solution single-dose prefilled syringe (3)
- Injection: 140 mg/mL solution single-dose prefilled SureClick® autoinjector (3)
- Injection: 420 mg/3.5 mL solution single-dose Pushtronex® system (on-body infusor with prefilled cartridge) (3)

### CONTRAINDICATIONS

Patients with a history of a serious hypersensitivity reaction to evolocumab or any of the excipients in REPATHA. (4)

### WARNINGS AND PRECAUTIONS

**Hypersensitivity Reactions:** Angioedema has occurred. If signs or symptoms of serious hypersensitivity reactions occur, discontinue treatment with REPATHA, treat according to the standard of care, and monitor until signs and symptoms resolve. (5.1)

### ADVERSE REACTIONS

Common (> 5% of patients treated with REPATHA and more frequently than placebo) adverse reactions in adults with:

*Primary hyperlipidemia:* nasopharyngitis, upper respiratory tract infection, influenza, back pain, and injection site reactions. (6)

*Established CVD:* diabetes mellitus, nasopharyngitis and upper respiratory tract infection. (6)

**To report SUSPECTED ADVERSE REACTIONS, contact Amgen Medical Information at 1-800-77-AMGEN (1-800-772-6436) or FDA at 1-800-FDA-1088 or [www.fda.gov/medwatch](http://www.fda.gov/medwatch).**

**See 17 for PATIENT COUNSELING INFORMATION and FDA-approved patient labeling.**

Revised: 02/2021

## FULL PRESCRIBING INFORMATION: CONTENTS\*

### 1 INDICATIONS AND USAGE

### 2 DOSAGE AND ADMINISTRATION

#### 2.1 Recommended Dosage

#### 2.2 Missed Doses

#### 2.3 Important Administration Instructions

### 3 DOSAGE FORMS AND STRENGTHS

### 4 CONTRAINDICATIONS

### 5 WARNINGS AND PRECAUTIONS

#### 5.1 Hypersensitivity Reactions

### 6 ADVERSE REACTIONS

#### 6.1 Clinical Trials Experience

#### 6.2 Immunogenicity

#### 6.3 Postmarketing Experience

### 8 USE IN SPECIFIC POPULATIONS

#### 8.1 Pregnancy

#### 8.2 Lactation

#### 8.4 Pediatric Use

#### 8.5 Geriatric Use

#### 8.6 Renal Impairment

#### 8.7 Hepatic Impairment

### 11 DESCRIPTION

### 12 CLINICAL PHARMACOLOGY

#### 12.1 Mechanism of Action

#### 12.2 Pharmacodynamics

#### 12.3 Pharmacokinetics

### 13 NONCLINICAL TOXICOLOGY

#### 13.1 Carcinogenesis, Mutagenesis, Impairment of Fertility

#### 13.2 Animal Toxicology and/or Pharmacology

### 14 CLINICAL STUDIES

### 16 HOW SUPPLIED/STORAGE AND HANDLING

### 17 PATIENT COUNSELING INFORMATION

\* Sections or subsections omitted from the full prescribing information are not listed.

## FULL PRESCRIBING INFORMATION

### 1 INDICATIONS AND USAGE

REPATHA is indicated:

- In adults with established cardiovascular disease to reduce the risk of myocardial infarction, stroke, and coronary revascularization
- As an adjunct to diet, alone or in combination with other low-density lipoprotein cholesterol (LDL-C)-lowering therapies, in adults with primary hyperlipidemia, including heterozygous familial hypercholesterolemia (HeFH), to reduce LDL-C
- As an adjunct to other LDL-C-lowering therapies in patients with homozygous familial hypercholesterolemia (HoFH), to reduce LDL-C

### 2 DOSAGE AND ADMINISTRATION

#### 2.1 Recommended Dosage

- In adults with established cardiovascular disease or with primary hyperlipidemia:
  - The recommended dosage of REPATHA is either 140 mg every 2 weeks OR 420 mg once monthly administered subcutaneously [*see Dosage and Administration (2.3)*].
  - If switching dosage regimens, administer the first dose of the new regimen on the next scheduled date of the prior regimen.
- In patients with HoFH:
  - The initial recommended dosage of REPATHA is 420 mg once monthly administered subcutaneously [*see Dosage and Administration (2.3)*].
  - The dosage can be increased to 420 mg every 2 weeks if a clinically meaningful response is not achieved in 12 weeks.
  - Patients on lipid apheresis may initiate treatment with 420 mg every 2 weeks to correspond with their apheresis schedule. Administer REPATHA after the apheresis session is complete.
- Assess LDL-C when clinically appropriate. The LDL-lowering effect of REPATHA may be measured as early as 4 weeks after initiation.
- When monitoring LDL-C for patients receiving REPATHA 420 mg once monthly, note that LDL-C can vary during the dosing interval in some patients; recommend measuring LDL-C just prior to the next scheduled dose [*see Clinical Studies (14)*].

#### 2.2 Missed Doses

If a dose is missed:

- Within 7 days from the missed dose, instruct the patient to administer REPATHA and resume the patient's original schedule.
- More than 7 days after the missed dose:
  - For an every 2 week dose, instruct the patient to wait until the next dose on the original schedule.
  - For a once-monthly dose, instruct the patient to administer the dose and start a new schedule based on this date.

## 2.3 Important Administration Instructions

- Advise latex-sensitive patients that the needle cover of the glass single-dose prefilled syringe and the single-dose prefilled autoinjector contain dry natural rubber (a derivative of latex) that may cause allergic reactions in individuals sensitive to latex [see *Warnings and Precautions (5.1)*].
- Train patients and/or caregivers on how to prepare and administer REPATHA, according to the Instructions for Use and instruct them to read and follow the Instructions for Use each time they use REPATHA.
- Prior to use, allow REPATHA to warm to room temperature for at least 30 minutes for the prefilled autoinjector or syringe and for at least 45 minutes for the on-body infusor with prefilled cartridge if REPATHA has been refrigerated [see *How Supplied/Storage and Handling (16)*].
- Visually inspect REPATHA prior to administration. REPATHA is a clear to opalescent, colorless to pale yellow solution. Do not use if the solution is cloudy, discolored, or contains particles.
- Administer REPATHA subcutaneously into areas of the abdomen, thigh, or upper arm that are not tender, bruised, red, or indurated. Avoid injecting into areas with scars or stretch marks. Rotate injection sites for each administration.
- The 420 mg dose of REPATHA can be administered:
  - over 5 minutes by using the single-dose on-body infusor with prefilled cartridge, or
  - by giving 3 injections consecutively within 30 minutes using the single-dose prefilled autoinjector or single-dose prefilled syringe.

## 3 DOSAGE FORMS AND STRENGTHS

REPATHA is a clear to opalescent, colorless to pale yellow solution available as follows:

- Injection: 140 mg/mL solution in a single-dose prefilled syringe
- Injection: 140 mg/mL solution in a single-dose prefilled SureClick<sup>®</sup> autoinjector
- Injection: 420 mg/3.5 mL solution in a single-dose Pushtronex<sup>®</sup> system (on-body infusor with prefilled cartridge)

## 4 CONTRAINDICATIONS

REPATHA is contraindicated in patients with a history of a serious hypersensitivity reaction to evolocumab or any of the excipients in REPATHA. Serious hypersensitivity reactions including angioedema have occurred in patients treated with REPATHA [see *Warnings and Precautions (5.1)*].

## 5 WARNINGS AND PRECAUTIONS

### 5.1 Hypersensitivity Reactions

Hypersensitivity reactions, including angioedema, have been reported in patients treated with REPATHA. If signs or symptoms of serious hypersensitivity reactions occur, discontinue treatment with REPATHA, treat according to the standard of care, and monitor until signs and symptoms resolve. REPATHA is contraindicated in patients with a history of serious hypersensitivity reactions to evolocumab or any excipient in REPATHA [see *Contraindications (4)*].

The needle cover of the glass single-dose prefilled syringe and the single-dose prefilled autoinjector contain dry natural rubber (a derivative of latex) which may cause an allergic reaction in individuals sensitive to latex.

## 6 ADVERSE REACTIONS

The following adverse reactions are also discussed in other sections of the label:

- Hypersensitivity Reactions [see *Warnings and Precautions (5.1)*]

### 6.1 Clinical Trials Experience

Because clinical trials are conducted under widely varying conditions, adverse reaction rates observed in the clinical trials of a drug cannot be directly compared to rates in the clinical trials of another drug and may not reflect the rates observed in clinical practice.

#### Adverse Reactions in Adults with Primary Hyperlipidemia

The data described below reflect exposure to REPATHA in 8 placebo-controlled trials that included 2651 patients treated with REPATHA, including 557 exposed for 6 months and 515 exposed for 1 year (median treatment duration of 12 weeks). The mean age of the population was 57 years, 49% of the population were women, 85% White, 6% Black, 8% Asians, and 2% other races.

#### *Adverse Reactions in a 52-Week Controlled Trial*

In a 52-week, double-blind, randomized, placebo-controlled trial, 599 patients received 420 mg of REPATHA subcutaneously once monthly [see *Clinical Studies (14)*]. The mean age was 56 years (range: 22 to 75 years), 23% were older than 65 years, 52% women, 80% White, 8% Black, 6% Asian; 6% identified as Hispanic ethnicity. Adverse reactions reported in at least 3% of REPATHA-treated patients, and more frequently than in placebo-treated patients are shown in Table 1. Adverse reactions led to discontinuation of treatment in 2.2% of REPATHA-treated patients and 1% of placebo-treated patients. The most common adverse reaction that led to REPATHA treatment discontinuation and occurred at a rate greater than placebo was myalgia (0.3% versus 0% for REPATHA and placebo, respectively).

**Table 1. Adverse Reactions Occurring in  $\geq$  3% of REPATHA-treated Patients and More Frequently than with Placebo in a 52-Week Trial**

	Placebo (N = 302) %	REPATHA (N = 599) %
Nasopharyngitis	9.6	10.5
Upper respiratory tract infection	6.3	9.3
Influenza	6.3	7.5
Back pain	5.6	6.2
Injection site reactions <sup>†</sup>	5.0	5.7
Cough	3.6	4.5
Urinary tract infection	3.6	4.5
Sinusitis	3.0	4.2
Headache	3.6	4.0
Myalgia	3.0	4.0
Dizziness	2.6	3.7
Musculoskeletal pain	3.0	3.3
Hypertension	2.3	3.2
Diarrhea	2.6	3.0
Gastroenteritis	2.0	3.0

† includes erythema, pain, bruising

*Adverse Reactions in Seven Pooled 12-Week Controlled Trials*

In seven pooled 12-week, double-blind, randomized, placebo-controlled trials, 993 patients received 140 mg of REPATHA subcutaneously every 2 weeks and 1059 patients received 420 mg of REPATHA subcutaneously monthly. The mean age was 57 years (range: 18 to 80 years), 29% were older than 65 years, 49% women, 85% White, 5% Black, 9% Asian; 5% identified as Hispanic ethnicity. Adverse reactions reported in at least 1% of REPATHA-treated patients, and more frequently than in placebo-treated patients, are shown in Table 2.

**Table 2. Adverse Reactions Occurring in ≥ 1% of REPATHA-treated Patients and More Frequently than with Placebo in Pooled 12-Week Trials**

	Placebo (N = 1224) %	REPATHA <sup>†</sup> (N = 2052) %
Nasopharyngitis	3.9	4.0
Back pain	2.2	2.3
Upper respiratory tract infection	2.0	2.1
Arthralgia	1.6	1.8
Nausea	1.2	1.8
Fatigue	1.0	1.6
Muscle spasms	1.2	1.3
Urinary tract infection	1.2	1.3
Cough	0.7	1.2
Influenza	1.1	1.2
Contusion	0.5	1.0

† 140 mg every 2 weeks and 420 mg once monthly combined

*Adverse Reactions in Eight Pooled Controlled Trials (Seven 12-Week Trials and One 52-Week Trial)*

The adverse reactions described below are from a pool of the 52-week trial and seven 12-week trials. The mean and median exposure durations of REPATHA in this pool of eight trials were 20 weeks and 12 weeks, respectively.

*Local Injection Site Reactions*

Injection site reactions occurred in 3.2% and 3.0% of REPATHA-treated and placebo-treated patients, respectively. The most common injection site reactions were erythema, pain, and bruising. The proportions of patients who discontinued treatment due to local injection site reactions in REPATHA-treated patients and placebo-treated patients were 0.1% and 0%, respectively.

*Hypersensitivity Reactions*

Hypersensitivity reactions occurred in 5.1% and 4.7% of REPATHA-treated and placebo-treated patients, respectively. The most common hypersensitivity reactions were rash (1.0% versus 0.5% for REPATHA and placebo, respectively), eczema (0.4% versus 0.2%), erythema (0.4% versus 0.2%), and urticaria (0.4% versus 0.1%).

Adverse Reactions in the Cardiovascular Outcomes Trial

In a double-blind, randomized, placebo-controlled cardiovascular outcomes trial, 27,525 patients received at least one dose of REPATHA or placebo [see *Clinical Studies (14)*]. The mean age was 62.5 years

(range: 40 to 86 years), 45% were 65 years or older, 9% were 75 years or older, 25% women, 85% White, 2% Black and 10% Asian; 8% identified as Hispanic ethnicity. Patients were exposed to REPATHA or placebo for a median of 24.8 months; 91% of patients were exposed for  $\geq 12$  months, 54% were exposed for  $\geq 24$  months and 5% were exposed for  $\geq 36$  months.

The safety profile of REPATHA in this trial was generally consistent with the safety profile described above in the 12- and 52-week controlled trials involving patients with primary hyperlipidemia. Common adverse reactions ( $> 5\%$  of patients treated with REPATHA and occurring more frequently than placebo) included diabetes mellitus (8.8% REPATHA, 8.2% placebo), nasopharyngitis (7.8% REPATHA, 7.4% placebo), and upper respiratory tract infection (5.1% REPATHA, 4.8% placebo).

Among the 16,676 patients without diabetes mellitus at baseline, the incidence of new-onset diabetes mellitus during the trial was 8.1% in patients treated with REPATHA compared with 7.7% in patients that received placebo.

#### Adverse Reactions in Patients with HoFH

In a 12-week, double-blind, randomized, placebo-controlled trial of 49 patients with HoFH, 33 patients received 420 mg of REPATHA subcutaneously once monthly [see *Clinical Studies (14)*]. The mean age was 31 years (range: 13 to 57 years), 49% were women, 90% White, 4% Asian, and 6% other. The adverse reactions that occurred in at least two (6.1%) REPATHA-treated patients, and more frequently than in placebo-treated patients, included:

- Upper respiratory tract infection (9.1% versus 6.3%)
- Influenza (9.1% versus 0%)
- Gastroenteritis (6.1% versus 0%)
- Nasopharyngitis (6.1% versus 0%)

In a multicenter, open-label 5-year extension study, 106 patients with HoFH, including 14 pediatric patients, received 420 mg of REPATHA subcutaneously once monthly or every 2 weeks [see *Clinical Studies (14)*]. The mean age was 34 years (range: 13 to 68 years), 51% were women, 80% White, 12% Asian, 1% Native American, and 7% other; 5% identified as Hispanic ethnicity. No new adverse reactions were observed during the open-label extension study.

## **6.2 Immunogenicity**

As with all therapeutic proteins, there is potential for immunogenicity. The detection of antibody formation is highly dependent on the sensitivity and specificity of the assay. Additionally, the observed incidence of antibody (including neutralizing antibody) positivity in an assay may be influenced by several factors including assay methodology, sample handling, timing of sample collection, concomitant medications, and underlying disease. For these reasons, comparison of the incidence of antibodies to REPATHA in the studies described below with the incidence of antibodies in other studies or to other products may be misleading.

The immunogenicity of REPATHA has been evaluated using an electrochemiluminescent bridging screening immunoassay for the detection of binding anti-drug antibodies. For patients whose sera tested positive in the screening immunoassay, an *in vitro* biological assay was performed to detect neutralizing antibodies.

In a pool of placebo- and active-controlled clinical trials, 0.3% (48 out of 17,992) of patients treated with at least one dose of REPATHA tested positive for the development of binding antibodies. Patients whose

sera tested positive for binding antibodies were further evaluated for neutralizing antibodies; none of the patients tested positive for neutralizing antibodies.

There was no evidence that the presence of anti-drug binding antibodies impacted the pharmacokinetic profile, clinical response, or safety of REPATHA.

### 6.3 Postmarketing Experience

The following additional adverse reactions have been identified during post-approval use of REPATHA. Because these reactions are reported voluntarily from a population of uncertain size, it is not always possible to reliably estimate their frequency or establish a causal relationship to drug exposure.

- Hypersensitivity reactions: Angioedema
- Influenza-like illness

## 8 USE IN SPECIFIC POPULATIONS

### 8.1 Pregnancy

#### Risk Summary

Available data from clinical trials and postmarketing reports on REPATHA use in pregnant women are insufficient to evaluate for a drug-associated risk of major birth defects, miscarriage or other adverse maternal or fetal outcomes. In animal reproduction studies, there were no effects on pregnancy or neonatal/infant development when monkeys were subcutaneously administered evolocumab from organogenesis through parturition at dose exposures up to 12 times the exposure at the maximum recommended human dose of 420 mg every month. In a similar study with another drug in the PCSK9 inhibitor antibody class, humoral immune suppression was observed in infant monkeys exposed to that drug *in utero* at all doses. The exposures where immune suppression occurred in infant monkeys were greater than those expected clinically. No assessment for immune suppression was conducted with evolocumab in infant monkeys. Measurable evolocumab serum concentrations were observed in the infant monkeys at birth at comparable levels to maternal serum, indicating that evolocumab, like other IgG antibodies, crosses the placental barrier. Monoclonal antibodies are transported across the placenta in increasing amounts especially near term; therefore, evolocumab has the potential to be transmitted from the mother to the developing fetus.

The estimated background risk of major birth defects and miscarriage for the indicated population(s) is unknown. In the U.S. general population, the estimated background risk of major birth defects and miscarriage in clinically recognized pregnancies is 2-4% and 15-20%, respectively.

There is a pregnancy safety study for REPATHA. If REPATHA is administered during pregnancy, healthcare providers should report REPATHA exposure by contacting Amgen at 1-800-77-AMGEN (1-800-772-6436).

#### Data

##### *Animal Data*

In cynomolgus monkeys, no effects on embryo-fetal or postnatal development (up to 6 months of age) were observed when evolocumab was dosed during organogenesis to parturition at 50 mg/kg once every 2 weeks by the subcutaneous route at exposures 30- and 12-fold the recommended human doses of 140 mg every 2 weeks and 420 mg once monthly, respectively, based on plasma AUC. No test of humoral immunity in infant monkeys was conducted with evolocumab.

## 8.2 Lactation

### Risk Summary

There is no information regarding the presence of evolocumab in human milk, the effects on the breastfed infant, or the effects on milk production. Human IgG is present in human milk, but published data suggest that breast milk antibodies do not enter the neonatal and infant circulation in substantial amounts. The development and health benefits of breastfeeding should be considered along with the mother's clinical need for REPATHA and any potential adverse effects on the breastfed infant from REPATHA or from the underlying maternal condition.

## 8.4 Pediatric Use

The safety and effectiveness of REPATHA in combination with diet and other LDL-C-lowering therapies for the treatment of HoFH have been established in pediatric patients aged 13 years and older. Use of REPATHA for this indication is supported by evidence from adequate and well-controlled trials in adults and pediatric patients aged 13 years and older with HoFH (including 7 pediatric patients treated with REPATHA) and an open-label study in 14 pediatric patients aged 13 years and older with HoFH (including 7 patients not previously treated with REPATHA) [see *Adverse Reactions (6.1) and Clinical Studies (14)*].

The safety and effectiveness of REPATHA have not been established in pediatric patients with HoFH who are younger than 13 years old or in pediatric patients with primary hyperlipidemia.

## 8.5 Geriatric Use

In controlled trials, 7656 (41%) patients treated with REPATHA were  $\geq 65$  years old and 1500 (8%) were  $\geq 75$  years old. No overall differences in safety or effectiveness were observed between these patients and younger patients, and other reported clinical experience has not identified differences in responses between the elderly and younger patients, but greater sensitivity of some older individuals cannot be ruled out.

## 8.6 Renal Impairment

No dose adjustment is needed in patients with renal impairment [see *Clinical Pharmacology (12.3)*].

## 8.7 Hepatic Impairment

No dose adjustment is needed in patients with mild to moderate hepatic impairment (Child-Pugh A or B). No data are available in patients with severe hepatic impairment [see *Clinical Pharmacology (12.3)*].

## 11 DESCRIPTION

Evolocumab is a human monoclonal immunoglobulin G2 (IgG2) directed against human proprotein convertase subtilisin kexin type 9 (PCSK9). Evolocumab has an approximate molecular weight (MW) of 144 kDa and is produced in genetically engineered mammalian (Chinese hamster ovary) cells.

REPATHA is a sterile, preservative-free, clear to opalescent, colorless to pale yellow solution for subcutaneous use. Each 1 mL single-dose prefilled syringe and single-dose prefilled SureClick<sup>®</sup> autoinjector contains 140 mg evolocumab, acetate (1.2 mg), polysorbate 80 (0.1 mg), proline (25 mg) in Water for Injection, USP. Sodium hydroxide may be used to adjust to a pH of 5.0. Each single-dose Pushtronex<sup>®</sup> system (on-body infusor with prefilled cartridge) delivers a 3.5 mL solution containing

420 mg evolocumab, acetate (4.2 mg), polysorbate 80 (0.35 mg), proline (89 mg) in Water for Injection, USP. Sodium hydroxide may be used to adjust to a pH of 5.0.

## 12 CLINICAL PHARMACOLOGY

### 12.1 Mechanism of Action

Evolocumab is a human monoclonal IgG2 directed against human proprotein convertase subtilisin kexin type 9 (PCSK9). PCSK9 binds to the low-density lipoprotein receptor (LDLR) on the surface of hepatocytes to promote LDLR degradation within the liver. By inhibiting the binding of PCSK9 to LDLR, evolocumab increases the number of LDLRs available to clear LDL from the blood, thereby lowering LDL-C levels.

### 12.2 Pharmacodynamics

Following single subcutaneous administration of 140 mg or 420 mg of evolocumab, maximum suppression of circulating unbound PCSK9 occurred by 4 hours. Unbound PCSK9 concentrations returned toward baseline when evolocumab concentrations decreased below the limit of quantitation. Maximum LDL-C reduction occurred by 2 weeks after a single dose of 140 mg of evolocumab and by 3 weeks after a single dose of 420 mg of evolocumab.

### 12.3 Pharmacokinetics

Evolocumab exhibits non-linear kinetics as a result of binding to PCSK9. Administration of the 140 mg dose in healthy volunteers resulted in a  $C_{max}$  mean (standard deviation [SD]) of 18.6 (7.3)  $\mu\text{g/mL}$  and  $AUC_{last}$  mean (SD) of 188 (98.6)  $\text{day}\cdot\mu\text{g/mL}$ . Administration of the 420 mg dose in healthy volunteers resulted in a  $C_{max}$  mean (SD) of 59.0 (17.2)  $\mu\text{g/mL}$  and  $AUC_{last}$  mean (SD) of 924 (346)  $\text{day}\cdot\mu\text{g/mL}$ . Following a single 420 mg intravenous dose, the mean (SD) systemic clearance was estimated to be 12 (2)  $\text{mL/hr}$ . An approximate 2- to 3-fold accumulation was observed in trough serum concentrations ( $C_{min}$  [SD] 7.21 [6.6]) following 140 mg doses administered subcutaneously every 2 weeks or following 420 mg doses administered subcutaneously monthly ( $C_{min}$  [SD] 11.2 [10.8]), and serum trough concentrations approached steady-state by 12 weeks of dosing.

#### Absorption

Following a single subcutaneous dose of 140 mg or 420 mg evolocumab administered to healthy adults, median peak serum concentrations were attained in 3 to 4 days, and estimated absolute bioavailability was 72%.

#### Distribution

Following a single 420 mg intravenous dose, the mean (SD) steady-state volume of distribution was estimated to be 3.3 (0.5) L.

#### Elimination

Two elimination phases were observed for REPATHA. At low concentrations, the elimination is predominately through saturable binding to target (PCSK9), while at higher concentrations the elimination of REPATHA is largely through a non-saturable proteolytic pathway. REPATHA was estimated to have an effective half-life of 11 to 17 days.

#### Specific Populations

The pharmacokinetics of evolocumab were not affected by age, gender, race, or creatinine clearance across all approved populations [see *Use in Specific Populations* (8.5)].

The exposure of evolocumab decreased with increasing body weight. These differences are not clinically meaningful.

#### *Renal Impairment*

Since monoclonal antibodies are not known to be eliminated via renal pathways, renal function is not expected to impact the pharmacokinetics of evolocumab.

In a clinical trial of 18 patients with either normal renal function (estimated glomerular filtration rate [eGFR]  $\geq 90$  mL/min/1.73 m<sup>2</sup>, n = 6), severe renal impairment (eGFR  $< 30$  mL/min/1.73 m<sup>2</sup>, n = 6), or end-stage renal disease (ESRD) receiving hemodialysis (n = 6), exposure to evolocumab after a single 140 mg subcutaneous dose was decreased in patients with severe renal impairment or ESRD receiving hemodialysis. Reductions in PCSK9 levels in patients with severe renal impairment or ESRD receiving hemodialysis was similar to those with normal renal function [see *Use in Specific Populations (8.6)*].

#### *Hepatic Impairment*

Following a single 140 mg subcutaneous dose of evolocumab in patients with mild or moderate hepatic impairment, a 20-30% lower mean C<sub>max</sub> and 40-50% lower mean AUC were observed as compared to healthy patients [see *Use in Specific Populations (8.7)*].

#### Drug Interaction Studies

An approximately 20% decrease in the C<sub>max</sub> and AUC of evolocumab was observed in patients co-administered with a high-intensity statin regimen. This difference is not clinically meaningful.

### **13 NONCLINICAL TOXICOLOGY**

#### **13.1 Carcinogenesis, Mutagenesis, Impairment of Fertility**

The carcinogenic potential of evolocumab was evaluated in a lifetime study conducted in the hamster at dose levels of 10, 30, and 100 mg/kg administered every 2 weeks. There were no evolocumab-related tumors at the highest dose at systemic exposures up to 38- and 15-fold the recommended human doses of 140 mg every 2 weeks and 420 mg once monthly, respectively, based on plasma AUC. The mutagenic potential of evolocumab has not been evaluated; however, monoclonal antibodies are not expected to alter DNA or chromosomes.

There were no adverse effects on fertility (including estrous cycling, sperm analysis, mating performance, and embryonic development) at the highest dose in a fertility and early embryonic developmental toxicology study in hamsters when evolocumab was subcutaneously administered at 10, 30, and 100 mg/kg every 2 weeks. The highest dose tested corresponds to systemic exposures up to 30- and 12-fold the recommended human doses of 140 mg every 2 weeks and 420 mg once monthly, respectively, based on plasma AUC. In addition, there were no adverse evolocumab-related effects on surrogate markers of fertility (reproductive organ histopathology, menstrual cycling, or sperm parameters) in a 6-month chronic toxicology study in sexually mature monkeys subcutaneously administered evolocumab at 3, 30, and 300 mg/kg once weekly. The highest dose tested corresponds to 744- and 300-fold the recommended human doses of 140 mg every 2 weeks and 420 mg once monthly, respectively, based on plasma AUC.

#### **13.2 Animal Toxicology and/or Pharmacology**

During a 3-month toxicology study of 10 and 100 mg/kg once every 2 weeks evolocumab in combination with 5 mg/kg once daily rosuvastatin in adult monkeys, there were no effects of evolocumab on the

humoral immune response to keyhole limpet hemocyanin (KLH) after 1 to 2 months exposure. The highest dose tested corresponds to exposures 54- and 21-fold higher than the recommended human doses of 140 mg every 2 weeks and 420 mg once monthly, respectively, based on plasma AUC. Similarly, there were no effects of evolocumab on the humoral immune response to KLH (after 3 to 4 months exposure) in a 6-month study in cynomolgus monkeys at dose levels up to 300 mg/kg once weekly evolocumab corresponding to exposures 744- and 300-fold greater than the recommended human doses of 140 mg every 2 weeks and 420 mg once monthly, respectively, based on plasma AUC.

## 14 CLINICAL STUDIES

### Adult Patients with Established Cardiovascular Disease

Study 1 (FOURIER, NCT01764633) was a double-blind, randomized, placebo-controlled, event-driven trial in 27,564 (13,784 REPATHA, 13,780 placebo) adult patients with established cardiovascular disease and with LDL-C  $\geq$  70 mg/dL and/or non-HDL-C  $\geq$  100 mg/dL despite high- or moderate-intensity statin therapy. Patients were randomly assigned 1:1 to receive either subcutaneous injections of REPATHA (140 mg every 2 weeks or 420 mg once monthly) or placebo; 86% used the every-2-week regimen throughout the trial. The median follow-up duration was 26 months. Overall, 99.2% of patients were followed until the end of the trial or death.

The mean (SD) age at baseline was 63 (9) years, with 45% being at least 65 years old; 25% were women. The trial population was 85% White, 2% Black, and 10% Asian; 8% identified as Hispanic ethnicity. Regarding prior diagnoses of cardiovascular disease, 81% had prior myocardial infarction, 19% prior non-hemorrhagic stroke, and 13% had symptomatic peripheral arterial disease. Selected additional baseline risk factors included hypertension (80%), diabetes mellitus (1% type 1; 36% type 2), current daily cigarette smoking (28%), New York Heart Association class I or II congestive heart failure (23%), and eGFR  $<$  60 mL/min per 1.73 m<sup>2</sup> (6%). Most patients were on a high- (69%) or moderate-intensity (30%) statin therapy at baseline, and 5% were also taking ezetimibe. Most patients were taking at least one other cardiovascular medication including anti-platelet agents (93%), beta blockers (76%), angiotensin converting enzyme (ACE) inhibitors (56%), or angiotensin receptor blockers (23%). On stable background lipid-lowering therapy, the median [Q1, Q3] LDL-C at baseline was 92 [80, 109] mg/dL; the mean (SD) was 98 (28) mg/dL.

REPATHA significantly reduced the risk for the primary composite endpoint (time to first occurrence of cardiovascular death, myocardial infarction, stroke, hospitalization for unstable angina, or coronary revascularization;  $p <$  0.0001) and the key secondary composite endpoint (time to first occurrence of cardiovascular death, myocardial infarction, or stroke;  $p <$  0.0001). The Kaplan-Meier estimates of the cumulative incidence of the primary and key secondary composite endpoints over time are shown in Figure 1 and Figure 2 below.

The results of primary and secondary efficacy endpoints are shown in Table 3 below.

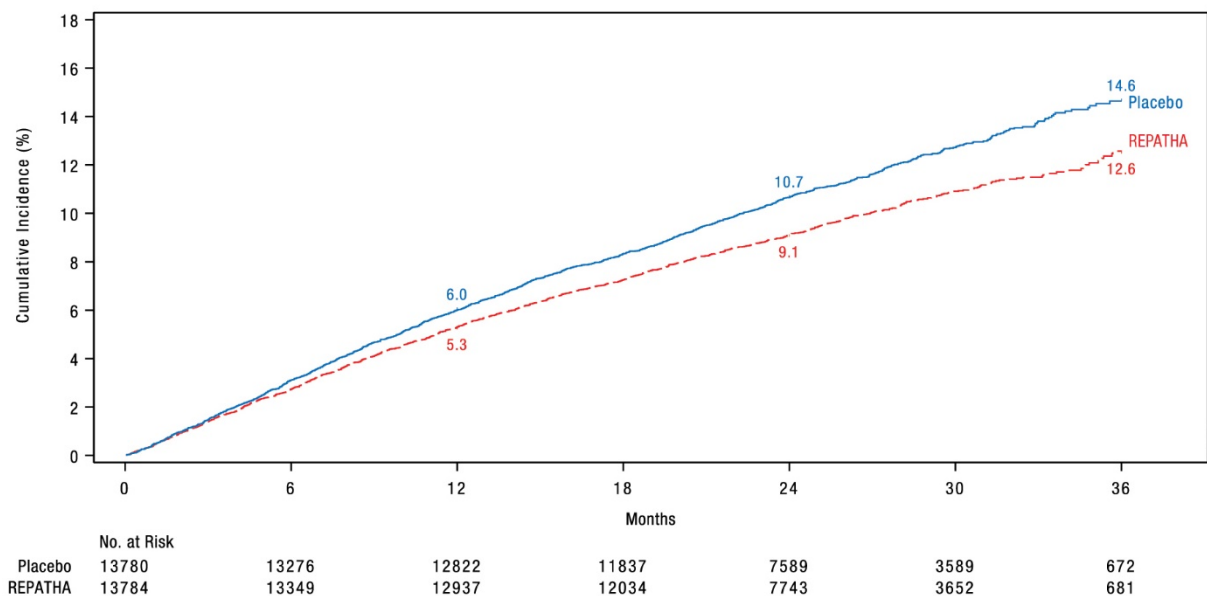
**Table 3. Effect of REPATHA on Cardiovascular Events in Patients with Established Cardiovascular Disease in FOURIER**

	Placebo		REPATHA		REPATHA vs. Placebo
	N = 13780 n (%)	Incidence Rate (per 100 patient years)	N = 13784 n (%)	Incidence Rate (per 100 patient years)	Hazard Ratio (95% CI)
Primary composite endpoint					
Time to first occurrence of cardiovascular death, myocardial infarction, stroke, coronary revascularization, hospitalization for unstable angina	1563 (11.3)	5.2	1344 (9.8)	4.5	0.85 (0.79, 0.92)
Key secondary composite endpoint					
Time to first occurrence of cardiovascular death, myocardial infarction, stroke	1013 (7.4)	3.4	816 (5.9)	2.7	0.80 (0.73, 0.88)
Other secondary endpoints					
Time to cardiovascular death	240 (1.7)	0.8	251 (1.8)	0.8	1.05 (0.88, 1.25)
Time to death by any cause <sup>a</sup>	426 (3.1)	1.4	444 (3.2)	1.5	1.04 (0.91, 1.19)
Time to first fatal or non-fatal myocardial infarction	639 (4.6)	2.1	468 (3.4)	1.6	0.73 (0.65, 0.82)
Time to first fatal or non-fatal stroke	262 (1.9)	0.9	207 (1.5)	0.7	0.79 (0.66, 0.95)
Time to first coronary revascularization	965 (7.0)	3.2	759 (5.5)	2.5	0.78 (0.71, 0.86)
Time to first hospitalization for unstable angina <sup>b</sup>	239 (1.7)	0.8	236 (1.7)	0.8	0.99 (0.82, 1.18)

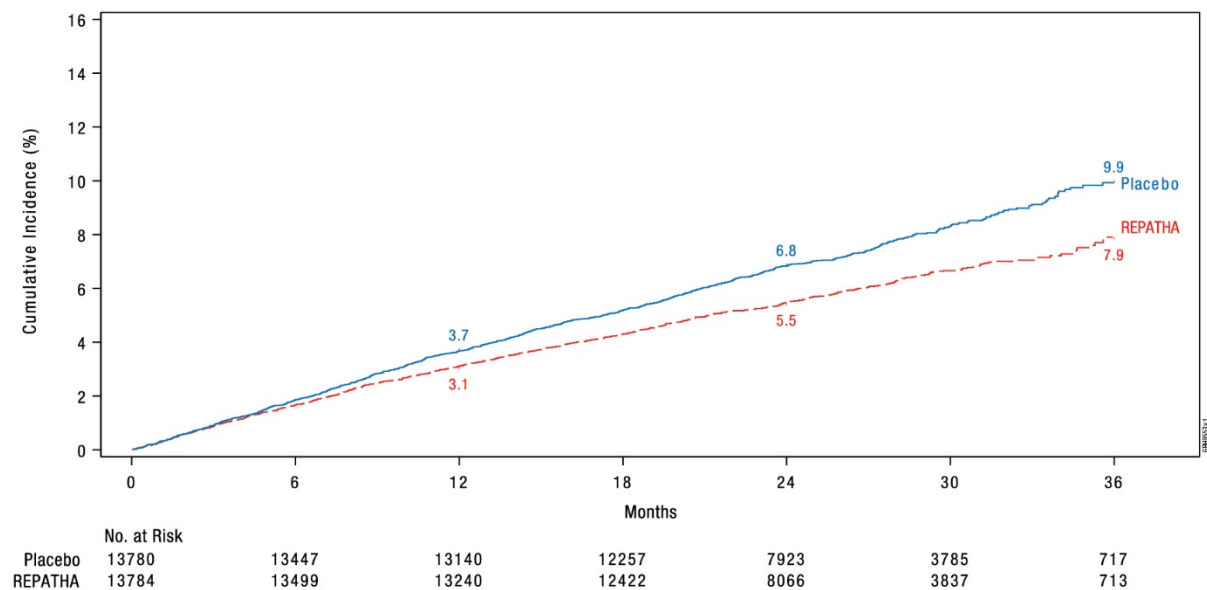
<sup>a</sup> Time to death by any cause is not a component of either the primary composite endpoint or key secondary composite endpoint.

<sup>b</sup> Not a prespecified endpoint; an *ad hoc* analysis was performed to ensure results are provided for each individual component of the primary endpoint.

**Figure 1. Estimated Cumulative Incidence of Primary Composite Endpoint Over 3 Years in FOURIER**



**Figure 2. Estimated Cumulative Incidence of Key Secondary Composite Endpoint Over 3 Years in FOURIER**



The difference between REPATHA and placebo in mean percent change in LDL-C from baseline to Week 12 was -63% (95% CI: -63%, -62%) and from baseline to Week 72 was -57% (95% CI: -58%, -56%). At Week 48, the median [Q1, Q3] LDL-C was 26 [15, 46] mg/dL in the REPATHA group, with 47% of patients having LDL-C < 25 mg/dL.

In EBBINGHAUS (NCT02207634), a substudy of 1974 patients enrolled in the FOURIER trial, REPATHA was non-inferior to placebo on selected cognitive function domains as assessed with the use of neuropsychological function tests over a median follow-up of 19 months.

### Primary Hyperlipidemia

Study 2 (LAPLACE-2, NCT01763866) was a multicenter, double-blind, randomized controlled 12-week trial in which patients were initially randomized to an open-label specific statin regimen for a 4-week lipid stabilization period followed by random assignment to subcutaneous injections of REPATHA 140 mg every 2 weeks, REPATHA 420 mg once monthly, or placebo for 12 weeks. The trial included 1896 patients with hyperlipidemia who received REPATHA, placebo, or ezetimibe as add-on therapy to daily doses of statins (atorvastatin, rosuvastatin, or simvastatin). Ezetimibe was also included as an active control only among those assigned to background atorvastatin. Overall, the mean age at baseline was 60 years (range: 20 to 80 years), 35% were  $\geq 65$  years old, 46% women, 94% White, 4% were Black, and 1% Asian; 5% identified as Hispanic or Latino ethnicity. After 4 weeks of background statin therapy, the mean baseline LDL-C ranged between 77 and 127 mg/dL across the five background therapy arms.

The difference between REPATHA and placebo in mean percent change in LDL-C from baseline to Week 12 was -71% (95% CI: -74%, -67%;  $p < 0.0001$ ) and -63% (95% CI: -68%, -57%;  $p < 0.0001$ ) for the 140 mg every 2 weeks and 420 mg once monthly dosages, respectively. The difference between REPATHA and ezetimibe in mean percent change in LDL-C from baseline to Week 12 was -45% (95% CI: -52%, -39%;  $p < 0.0001$ ) and -41% (95% CI: -47%, -35%;  $p < 0.0001$ ) for the 140 mg every 2 weeks and 420 mg once monthly dosages, respectively. For additional results, see Table 4 and Figure 3.

**Table 4. Effect of REPATHA on Lipid Parameters in Patients with Hyperlipidemia on Background Statin Regimens (Mean % Change from Baseline to Week 12 in LAPLACE-2)**

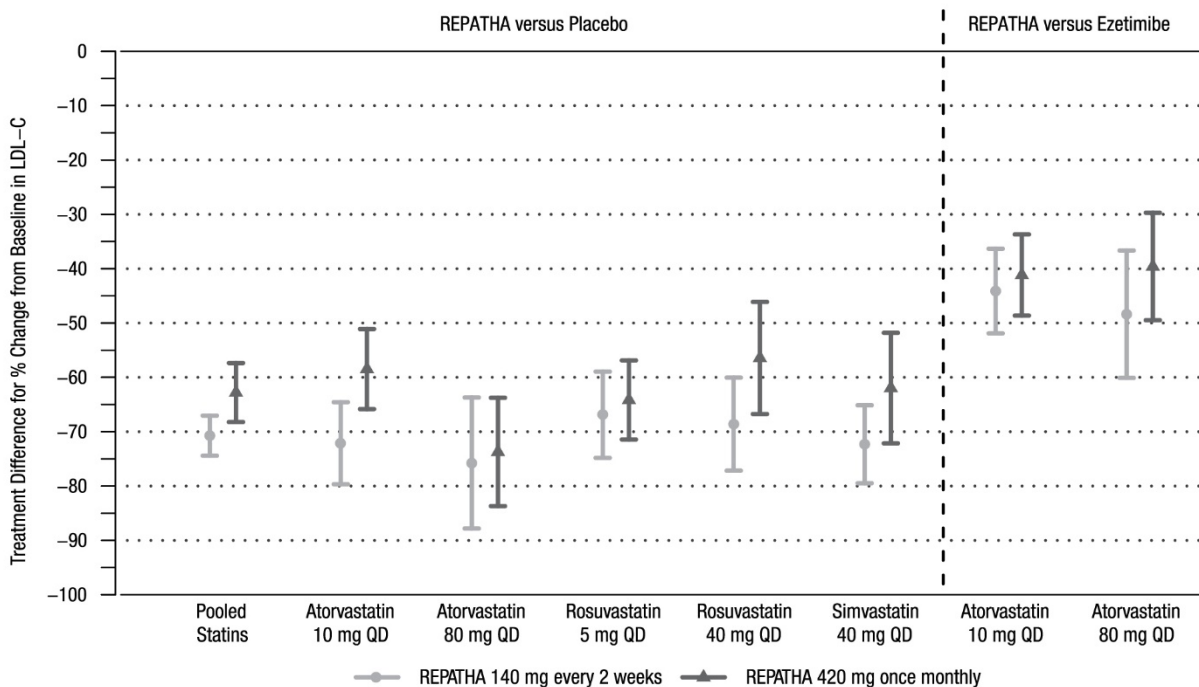
Treatment Group	LDL-C	Non-HDL-C	Apo B	Total Cholesterol
<b>REPATHA every 2 weeks vs. Placebo every 2 weeks</b> (Background statin: atorvastatin 10 mg or 80 mg; rosuvastatin 5 mg or 40 mg; simvastatin 40 mg)				
Placebo every 2 weeks (n = 281)	8	6	5	4
REPATHA 140 mg every 2 weeks <sup>†</sup> (n = 555)	-63	-53	-49	-36
Mean difference from placebo (95% CI)	-71 (-74, -67)	-59 (-62, -55)	-55 (-58, -52)	-40 (-43, -38)
<b>REPATHA once monthly vs. Placebo once monthly</b> (Background statin: atorvastatin 10 mg or 80 mg; rosuvastatin 5 mg or 40 mg; simvastatin 40 mg)				
Placebo once monthly (n = 277)	4	5	3	2
REPATHA 420 mg once monthly (n = 562)	-59	-50	-46	-34
Mean difference from placebo (95% CI)	-63 (-68, -57)	-54 (-58, -50)	-50 (-53, -47)	-36 (-39, -33)
<b>REPATHA every 2 weeks vs. Ezetimibe 10 mg daily</b> (Background statin: atorvastatin 10 mg or 80 mg)				
Ezetimibe 10 mg daily (n = 112)	-17	-16	-14	-12
REPATHA 140 mg every 2 weeks <sup>†</sup> (n = 219)	-63	-52	-49	-36
Mean difference from Ezetimibe (95% CI)	-45 (-52, -39)	-36 (-41, -31)	-35 (-40, -31)	-24 (-28, -20)
<b>REPATHA once monthly vs. Ezetimibe 10 mg daily</b> (Background statin: atorvastatin 10 mg or 80 mg)				

Treatment Group	LDL-C	Non-HDL-C	Apo B	Total Cholesterol
Ezetimibe 10 mg daily (n = 109)	-19	-16	-11	-12
REPATHA 420 mg once monthly (n = 220)	-59	-50	-46	-34
Mean difference from Ezetimibe (95% CI)	-41 (-47, -35)	-35 (-40, -29)	-34 (-39, -30)	-22 (-26, -19)

Estimates based on a multiple imputation model that accounts for treatment adherence

† 140 mg every 2 weeks or 420 mg once monthly yield similar reductions in LDL-C

**Figure 3. Effect of REPATHA on LDL-C in Patients with Hyperlipidemia when Combined with Statins (Mean % Change from Baseline to Week 12 in LAPLACE-2)**



Estimates based on a multiple imputation model that accounts for treatment adherence

Error bars indicate 95% confidence intervals

Study 3 (DESCARTES, NCT01516879) was a multicenter, double-blind, randomized, placebo-controlled, 52-week trial that included 901 patients with hyperlipidemia who received protocol-determined background lipid-lowering therapy of a cholesterol-lowering diet either alone or in addition to atorvastatin (10 mg or 80 mg daily) or the combination of atorvastatin 80 mg daily with ezetimibe. After stabilization on background therapy, patients were randomly assigned to the addition of placebo or REPATHA 420 mg administered subcutaneously once monthly. Overall, the mean age at baseline was 56 years (range: 25 to 75 years), 23% were  $\geq 65$  years, 52% women, 80% White, 8% Black, and 6% Asian; 6% identified as Hispanic or Latino ethnicity. After stabilization on the assigned background therapy, the mean baseline LDL-C ranged between 90 and 117 mg/dL across the four background therapy groups.

In these patients with hyperlipidemia on a protocol-determined background therapy, the difference between REPATHA 420 mg once monthly and placebo in mean percent change in LDL-C from baseline to Week 52 was -55% (95% CI: -60%, -50%;  $p < 0.0001$ ) (Table 5 and Figure 4). For additional results, see Table 5.

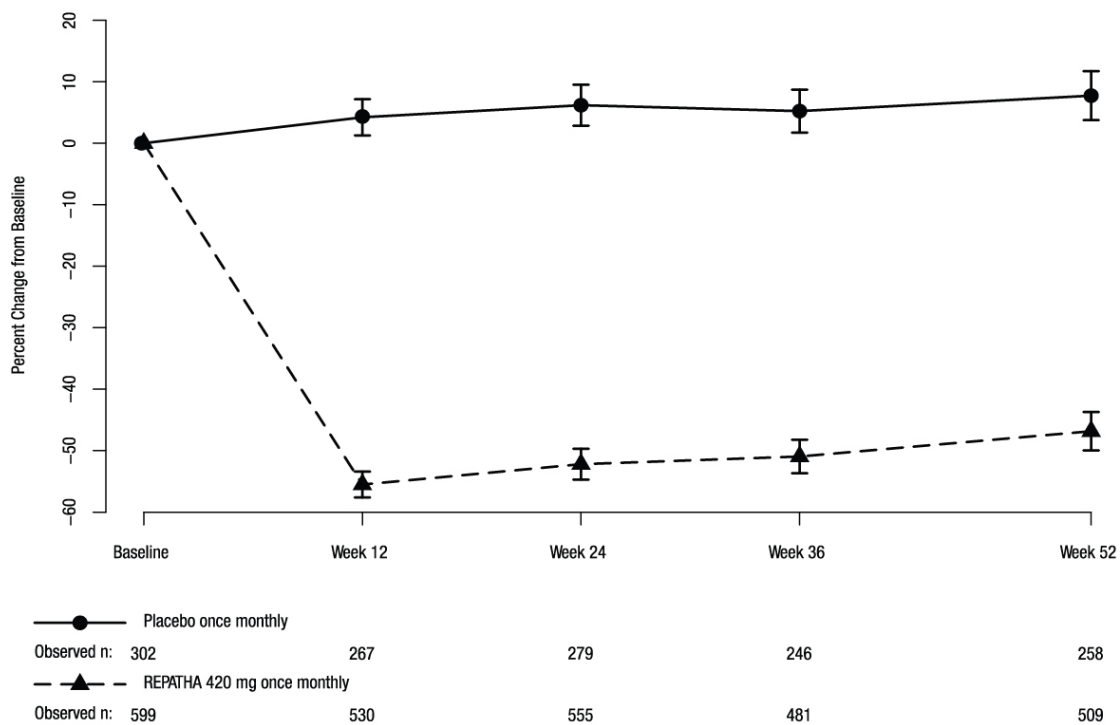
**Table 5. Effect of REPATHA on Lipid Parameters in Patients with Hyperlipidemia\* (Mean % Change from Baseline to Week 52 in DESCARTES)**

Treatment Group	LDL-C	Non-HDL-C	Apo B	Total Cholesterol
Placebo once monthly (n = 302)	8	8	2	5
REPATHA 420 mg once monthly (n = 599)	-47	-39	-38	-26
Mean difference from placebo (95% CI)	-55 (-60, -50)	-46 (-50, -42)	-40 (-44, -37)	-31 (-34, -28)

Estimates based on a multiple imputation model that accounts for treatment adherence

\* Prior to randomization, patients were stabilized on background therapy consisting of a cholesterol-lowering diet either alone or in addition to atorvastatin (10 mg or 80 mg daily) or the combination of atorvastatin 80 mg daily with ezetimibe.

**Figure 4. Effect of REPATHA 420 mg Once Monthly on LDL-C in Patients with Hyperlipidemia in DESCARTES**



Estimates based on a multiple imputation model that accounts for treatment adherence  
Error bars indicate 95% confidence intervals

Study 4 (MENDEL-2, NCT01763827) was a multicenter, double-blind, randomized, placebo- and active-controlled, 12-week trial that included 614 patients with hyperlipidemia who were not taking lipid-lowering therapy at baseline. Patients were randomly assigned to receive subcutaneous injections of REPATHA 140 mg every 2 weeks, REPATHA 420 mg once monthly, or placebo for 12 weeks. Blinded administration of ezetimibe was also included as an active control. Overall, the mean age at baseline was 53 years (range: 20 to 80 years), 18% were  $\geq 65$  years old, 66% were women, 83% White, 7% Black, and 9% Asian; 11% identified as Hispanic or Latino ethnicity. The mean baseline LDL-C was 143 mg/dL.

The difference between REPATHA and placebo in mean percent change in LDL-C from baseline to Week 12 was -55% (95% CI: -60%, -50%;  $p < 0.0001$ ) and -57% (95% CI: -61%, -52%;  $p < 0.0001$ ) for the 140 mg every 2 weeks and 420 mg once monthly dosages, respectively. The difference between REPATHA and ezetimibe in mean percent change in LDL-C from baseline to Week 12 was -37% (95% CI: -42%, -32%;  $p < 0.0001$ ) and -38% (95% CI: -42%, -34%;  $p < 0.0001$ ) for the 140 mg every 2 weeks and 420 mg once monthly dosages, respectively. For additional results, see Table 6.

**Table 6. Effect of REPATHA on Lipid Parameters in Patients with Hyperlipidemia (Mean % Change from Baseline to Week 12 in MENDEL-2)**

Treatment Group	LDL-C	Non-HDL-C	Apo B	Total Cholesterol
Placebo every 2 weeks (n = 76)	1	0	1	0
Ezetimibe 10 mg daily (n = 77)	-17	-14	-13	-10
REPATHA 140 mg every 2 weeks <sup>†</sup> (n = 153)	-54	-47	-44	-34
Mean difference from placebo (95% CI)	-55 (-60, -50)	-47 (-52, -43)	-45 (-50, -41)	-34 (-37, -30)
Mean difference from Ezetimibe (95% CI)	-37 (-42, -32)	-33 (-37, -29)	-32 (-36, -27)	-23 (-27, -20)
Placebo once monthly (n = 78)	1	2	2	0
Ezetimibe 10 mg daily (n = 77)	-18	-16	-13	-12
REPATHA 420 mg once monthly (n = 153)	-56	-49	-46	-35
Mean difference from placebo (95% CI)	-57 (-61, -52)	-51 (-54, -47)	-48 (-52, -44)	-35 (-38, -32)
Mean difference from Ezetimibe (95% CI)	-38 (-42, -34)	-32 (-36, -29)	-33 (-36, -29)	-23 (-26, -20)

Estimates based on a multiple imputation model that accounts for treatment adherence

<sup>†</sup>140 mg every 2 weeks or 420 mg once monthly yield similar reductions in LDL-C

Study 5 (RUTHERFORD-2, NCT01763918) was a multicenter, double-blind, randomized, placebo-controlled, 12-week trial in 329 patients with HeFH on statins with or without other lipid-lowering therapies. Patients were randomized to receive subcutaneous injections of REPATHA 140 mg every two weeks, 420 mg once monthly, or placebo. HeFH was diagnosed by the Simon Broome criteria (1991). In Study 5, 38% of patients had clinical atherosclerotic cardiovascular disease. The mean age at baseline was 51 years (range: 19 to 79 years), 15% of the patients were  $\geq 65$  years old, 42% were women, 90% were White, 5% were Asian, and 1% were Black. The average LDL-C at baseline was 156 mg/dL with 76% of the patients on high-intensity statin therapy.

The differences between REPATHA and placebo in mean percent change in LDL-C from baseline to Week 12 was -61% (95% CI: -67%, -55%;  $p < 0.0001$ ) and -60% (95% CI: -68%, -52%;  $p < 0.0001$ ) for the 140 mg every 2 weeks and 420 mg once monthly dosages, respectively. For additional results, see Table 7 and Figure 5.

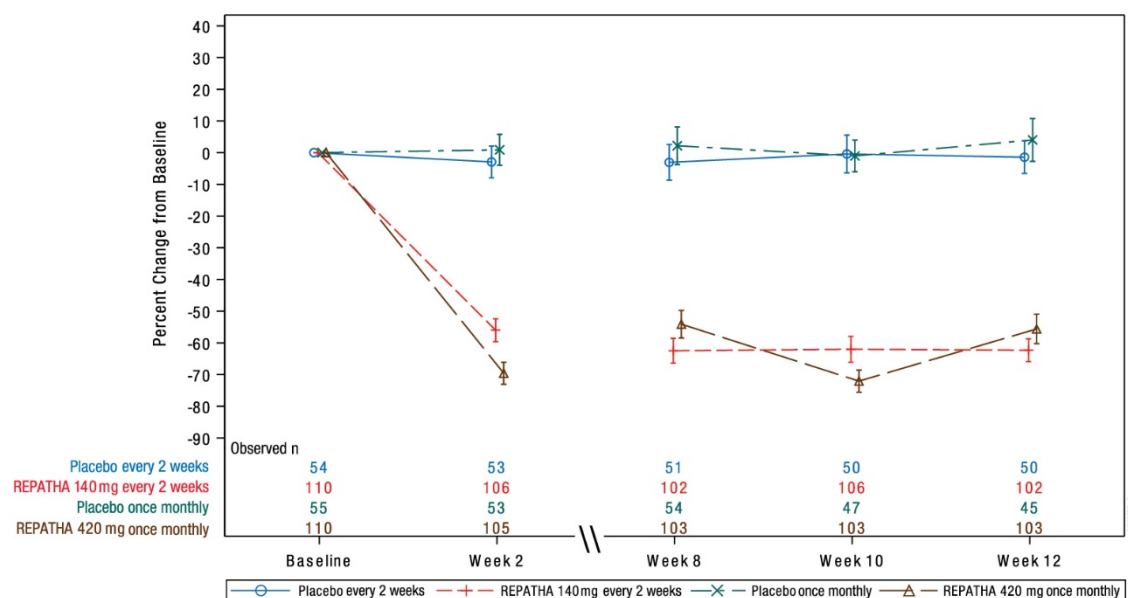
**Table 7. Effect of REPATHA on Lipid Parameters in Patients with HeFH (Mean % Change from Baseline to Week 12 in RUTHERFORD-2)**

Treatment Group	LDL-C	Non-HDL-C	Apo B	Total Cholesterol
Placebo every 2 weeks (n = 54)	-1	-1	-1	-2
REPATHA 140 mg every 2 weeks <sup>†</sup> (n = 110)	-62	-56	-49	-42
Mean difference from placebo (95% CI)	-61 (-67, -55)	-54 (-60, -49)	-49 (-54, -43)	-40 (-45, -36)
Placebo once monthly (n = 55)	4	4	4	2
REPATHA 420 mg once monthly (n = 110)	-56	-49	-44	-37
Mean difference from placebo (95% CI)	-60 (-68, -52)	-53 (-60, -46)	-48 (-55, -41)	-39 (-45, -33)

Estimates based on a multiple imputation model that accounts for treatment adherence

<sup>†</sup> 140 mg every 2 weeks or 420 mg once monthly yield similar reductions in LDL-C

**Figure 5. Effect of REPATHA on LDL-C in Patients with HeFH (Mean % Change from Baseline to Week 12 in RUTHERFORD-2)**



N = number of patients randomized and dosed in the full analysis set

Estimates based on a multiple imputation model that accounts for treatment adherence

Error bars indicate 95% confidence intervals

### HoFH

Study 6 (TESLA, NCT01588496) was a multicenter, double-blind, randomized, placebo-controlled, 12-week trial in 49 patients (not on lipid-apheresis therapy) with HoFH. In this trial, 33 patients received subcutaneous injections of 420 mg of REPATHA once monthly and 16 patients received placebo as an adjunct to other lipid-lowering therapies (e.g., statins, ezetimibe). The mean age at baseline was 31 years, 49% were women, 90% White, 4% were Asian, and 6% other. The trial included 10 adolescents (ages 13 to 17 years), 7 of whom received REPATHA. The mean LDL-C at baseline was 349 mg/dL with all

patients on statins (atorvastatin or rosuvastatin) and 92% on ezetimibe. The diagnosis of HoFH was made by genetic confirmation or a clinical diagnosis based on a history of an untreated LDL-C concentration > 500 mg/dL together with either xanthoma before 10 years of age or evidence of HeFH in both parents.

The difference between REPATHA and placebo in mean percent change in LDL-C from baseline to Week 12 was -31% (95% CI: -44%, -18%;  $p < 0.0001$ ). For additional results, see Table 8.

Patients known to have two LDL-receptor negative alleles (little to no residual function) did not respond to REPATHA.

**Table 8. Effect of REPATHA on Lipid Parameters in Patients with HoFH (Mean % Change from Baseline to Week 12 in TESLA)**

Treatment Group	LDL-C	Non-HDL-C	Apo B	Total Cholesterol
Placebo once monthly (n = 16)	9	8	4	8
REPATHA 420 mg once monthly (n = 33)	-22	-20	-17	-17
Mean difference from placebo (95% CI)	-31 (-44, -18)	-28 (-41, -16)	-21 (-33, -9)	-25 (-36, -14)

Estimates based on a multiple imputation model that accounts for treatment adherence

Study 7 (TAUSSIG, NCT01624142) was a multicenter, open-label 5-year extension study with REPATHA in 106 patients with HoFH, who were treated with REPATHA as an adjunct to other lipid-lowering therapies. The study included 14 pediatric patients (ages 13 to 17 years). All patients in the study were initially treated with REPATHA 420 mg once monthly except for those receiving lipid apheresis at enrollment, who began with REPATHA 420 mg every 2 weeks. Dose frequency in non-apheresis patients could be titrated up to 420 mg once every 2 weeks based on LDL-C response and PCSK9 levels.

A total of 48 patients with HoFH received REPATHA 420 mg once monthly for at least 12 weeks in Study 7 followed by REPATHA 420 mg every 2 weeks for at least 12 weeks. Mean percent change from baseline in LDL-C were -20% at Week 12 of 420 mg once monthly treatment and -30% at Week 12 of 420 mg every 2 weeks treatment, based on available data.

## 16 HOW SUPPLIED/STORAGE AND HANDLING

REPATHA is a clear to opalescent, colorless to pale yellow solution supplied as follows:

140 mg/mL single-dose prefilled syringe	1 pack	NDC 72511-750-01 NDC 55513-750-01
140 mg/mL single-dose prefilled SureClick® autoinjector	1 pack	NDC 55513-760-01
140 mg/mL single-dose prefilled SureClick® autoinjector	2 pack	NDC 72511-760-02 NDC 55513-760-02
140 mg/mL single-dose prefilled SureClick® autoinjector	3 pack	NDC 55513-760-03
420 mg/3.5 mL single-dose Pushtronex® system (on-body infusor with prefilled cartridge)	1 pack	NDC 72511-770-01 NDC 55513-770-01

The needle cover of the glass single-dose prefilled syringe and the single-dose prefilled autoinjector contain dry natural rubber (a derivative of latex). The single-dose on-body infusor with prefilled cartridge is not made with natural rubber latex.

Store refrigerated at 2°C to 8°C (36°F to 46°F) in the original carton to protect from light. Do not freeze. Do not shake.

For convenience, REPATHA may be kept at room temperature at 68°F to 77°F (20°C to 25°C) in the original carton for 30 days. If not used within the 30 days, discard REPATHA.

## 17 PATIENT COUNSELING INFORMATION

Advise the patient and/or caregiver to read the FDA-Approved Patient Labeling (Patient Information and Instructions for Use).

### Hypersensitivity

Inform patients that serious hypersensitivity reactions (e.g., angioedema) have been reported in patients treated with REPATHA. Advise patients on the symptoms of hypersensitivity reactions and instruct them to discontinue REPATHA and seek medical attention promptly, if such symptoms occur.

### Latex-Sensitivity

Advise latex-sensitive patients that the needle cover of the glass single-dose prefilled syringe and the single-dose prefilled autoinjector contain dry natural rubber (a derivative of latex) that may cause allergic reactions in individuals sensitive to latex.

### Pregnancy

Advise women who are exposed to REPATHA during pregnancy that there is a pregnancy safety study that monitors pregnancy outcomes. Encourage these patients to report their pregnancy to Amgen at 1-800-77-AMGEN (1-800-772-6436) [see *Use in Specific Populations (8.1)*].

### Administration

Provide guidance to patients and caregivers on proper subcutaneous administration technique and how to use the single-dose prefilled autoinjector, single-dose prefilled syringe, or single-dose on-body infusor with prefilled cartridge correctly. Inform patients that it may take up to 15 seconds to administer REPATHA using the single-dose prefilled autoinjector or single-dose prefilled syringe and about 5 minutes to administer REPATHA using the single-dose on-body infusor with prefilled cartridge.

The single-dose on-body infusor with prefilled cartridge is not made with natural rubber latex.

For more information about REPATHA, go to [www.REPATHA.com](http://www.REPATHA.com) or call 1-844-REPATHA (1-844-737-2842).



REPATHA® (evolocumab)

**Manufactured by:**

Amgen Inc.

One Amgen Center Drive

Thousand Oaks, California 91320-1799

U.S. License Number 1080

This label may not be the latest approved by FDA.  
For current labeling information, please visit <https://www.fda.gov/drugsatfda>

Patent: <http://pat.amgen.com/repatha/>  
© 2015-20xx Amgen Inc. All rights reserved.  
vX

**Patient Information**  
**REPATHA® (ri-PAth-a)**  
**(evolocumab)**  
**injection, for subcutaneous use**

**What is REPATHA?**

REPATHA is an injectable prescription medicine used:

- in adults with cardiovascular disease to reduce the risk of heart attack, stroke, and certain types of heart surgery.
- along with diet alone or together with other cholesterol-lowering medicines in adults with high blood cholesterol levels called primary hyperlipidemia (including a type of high cholesterol called heterozygous familial hypercholesterolemia [HeFH]) to reduce low density lipoprotein (LDL) or bad cholesterol.
- along with other LDL-lowering medicine in people with a type of high cholesterol called homozygous familial hypercholesterolemia (HoFH), who need additional lowering of LDL cholesterol.

It is not known if REPATHA is safe and effective in children with HoFH who are younger than 13 years of age or in children who do not have HoFH.

**Who should not use REPATHA?**

**Do not** use REPATHA if you are allergic to evolocumab or to any of the ingredients in REPATHA. See the end of this leaflet for a complete list of ingredients in REPATHA.

**What should I tell my healthcare provider before using REPATHA?**

Before you start using REPATHA, tell your healthcare provider about all your medical conditions, including if you:

- are allergic to rubber or latex. The needle covers on the single-dose prefilled syringes and within the needle caps on the single-dose prefilled SureClick® autoinjectors contain dry natural rubber. The single-dose Pushtronex® system (on-body infusor with prefilled cartridge) is not made with natural rubber latex.
- are pregnant or plan to become pregnant. It is not known if REPATHA will harm your unborn baby. Tell your healthcare provider if you become pregnant while taking REPATHA.
- are breastfeeding or plan to breastfeed. You and your healthcare provider should decide if you will take REPATHA or breastfeed.

If you are pregnant or breastfeed during REPATHA treatment, you are encouraged to call Amgen at 1-800-772-6436 (1-800-77-AMGEN) to share information about the health of you and your baby.

Tell your healthcare provider or pharmacist about any prescription and over-the-counter medicines, vitamins, or herbal supplements you take.

**How should I use REPATHA?**

- **See the detailed “Instructions for Use” that comes with this patient information about the right way to prepare and give REPATHA.**
- Use REPATHA exactly as your healthcare provider tells you to use it.
- REPATHA is given under the skin (subcutaneously), every 2 weeks or 1 time each month.
  - If you have HoFH, the recommended starting dose is 420 mg once monthly. After 12 weeks, your healthcare provider may decide to increase the dose to 420 mg every two weeks. If you receive lipid apheresis, your healthcare provider may decide to start you on a dose of 420 mg every two weeks to coincide with your apheresis treatment and you should take your dose after the apheresis treatment.
- REPATHA comes as a single-dose (1 time) prefilled autoinjector (SureClick® autoinjector), as a single-dose prefilled syringe or as a single-dose Pushtronex® system (on-body infusor with prefilled cartridge). Your healthcare provider will prescribe the type and dose that is best for you.
- If your healthcare provider prescribes you the 420 mg dose, you may use:
  - a single-dose on-body infusor with prefilled cartridge to give the injection over 5 minutes, or
  - 3 separate injections in a row, using a different single-dose prefilled syringe or single-dose prefilled autoinjector for each injection. Give all of these injections within 30 minutes.
- If your healthcare provider decides that you or a caregiver can give REPATHA, you or your caregiver should receive training on the right way to prepare and inject REPATHA. **Do not** try to inject REPATHA until you have been shown the right way by your healthcare provider or nurse.
  - If you are using the prefilled autoinjector, put the **yellow safety guard (needle inside) of the SureClick**

#### autoinjector on the skin before injecting.

- You can inject into the thigh, upper arm, or stomach (abdomen), except for a **two**-inch area around your belly button.
- **Do not** choose an area where the skin is tender, bruised, red, or hard. Avoid injecting into areas with scars or stretch marks.
- Always check the label of your single-dose prefilled autoinjector, single-dose prefilled syringe, or single-dose on-body infusor with prefilled cartridge to make sure you have the correct medicine and the correct dose of REPATHA before each injection.
- If you forget to use REPATHA or are not able to take the dose at the regular time, inject your missed dose as soon as you remember, as long as it is within 7 days of the missed dose.
  - If it is more than 7 days from the missed dose and you are using the every-2-week dose, inject the next dose based on your original schedule. This will put you back on your original schedule.
  - If it is more than 7 days from the missed dose and you are using the 1 time each-month dose, inject the dose and start a new schedule using this date.

If you are not sure when to take REPATHA after a missed dose, ask your healthcare provider or pharmacist.

- If your healthcare provider has prescribed REPATHA along with other cholesterol-lowering medicines, follow instructions from your healthcare provider. Read the patient information for those medicines.
- If you use more REPATHA than you should, talk to your healthcare provider or pharmacist.
- **Do not** stop using REPATHA without talking with your healthcare provider. If you stop using REPATHA, your cholesterol levels can increase.

#### What are possible side effects of REPATHA?

REPATHA can cause serious side effects including:

- **Serious Allergic Reactions.** Some people taking REPATHA have had serious allergic reactions. Stop taking REPATHA and call your healthcare provider or seek emergency medical help right away if you have any of these symptoms:
  - trouble breathing or swallowing
  - raised bumps (hives)
  - rash, or itching
  - swelling of the face, lips, tongue, throat or arms

The most common side effects of REPATHA include: runny nose, sore throat, symptoms of the common cold, flu or flu-like symptoms, back pain, high blood sugar levels (diabetes) and redness, pain, or bruising at the injection site.

Tell your healthcare provider if you have any side effect that bothers you or that does not go away.

These are not all the possible side effects of REPATHA. Ask your healthcare provider or pharmacist for more information.

Call your healthcare provider for medical advice about side effects. You may report side effects to FDA at 1-800-FDA-1088.

#### General information about the safe and effective use of REPATHA.

Medicines are sometimes prescribed for purposes other than those listed in a Patient Information leaflet. **Do not** use REPATHA for a condition for which it was not prescribed. **Do not** give REPATHA to other people, even if they have the same symptoms that you have. It may harm them.

You can ask your pharmacist or healthcare provider for information about REPATHA that is written for healthcare professionals.

#### What are the ingredients in REPATHA?

- Active Ingredient: evolocumab
- Inactive Ingredients: proline, glacial acetic acid, polysorbate 80, water for injection USP, and sodium hydroxide.

Manufactured by: Amgen Inc. One Amgen Center Drive, Thousand Oaks, California 91320-1799.

U.S. License Number 1080

Patent: <http://pat.amgen.com/repatha/>

©2017-20xx Amgen Inc. All rights reserved.

For more information about REPATHA, go to [www.REPATHA.com](http://www.REPATHA.com) or call 1-844-REPATHA (1-844-737-2842).

This Patient Information has been approved by the U.S. Food and Drug Administration.

Revised: x/20xx

vX