

HIGHLIGHTS OF PRESCRIBING INFORMATION

These highlights do not include all the information needed to use KABIVEN® safely and effectively. See full prescribing information for KABIVEN®.

KABIVEN® (amino acids, electrolytes, dextrose and lipid injectable emulsion), for intravenous use
Initial U.S. Approval: TBD

WARNING: DEATH IN PRETERM INFANTS

See full prescribing information for complete boxed warning

- Deaths in preterm infants have been reported in literature. (5.1, 8.4)
- Autopsy findings included intravascular fat accumulation in the lungs. (5.1, 8.4)
- Preterm and low birth weight infants have poor clearance of intravenous lipid emulsion and increased free fatty acid plasma levels following lipid emulsion infusion. (5.1, 8.4)

INDICATIONS AND USAGE

KABIVEN® is indicated as a source of calories, protein, electrolytes and essential fatty acids for adult patients requiring parenteral nutrition when oral or enteral nutrition is not possible, insufficient, or contraindicated. KABIVEN® may be used to prevent essential fatty acid deficiency or treat negative nitrogen balance in adult patients. (1)

Limitation of Use:

Not recommended for use in pediatric patients < 2 years including preterm infants because the fixed content of the formulation does not meet nutritional requirements in this age group. (1, 5.1, 8.4)

DOSAGE AND ADMINISTRATION

- For intravenous infusion only into a central vein. (2.1, 5.8)
- Recommended dosage depends on clinical status, body weight and nutritional requirements. (2.4)
- Adult dosage: 19 to 38 mL/kg/day (0.63 to 1.26 g/kg/day of protein, 1.85 to 3.71 g/kg/day of dextrose, 0.74 to 1.48 g/kg/day of lipid) (2.4)
- The maximum infusion rate is 2.6 mL/kg/hour (corresponding to 0.09 g/kg/hour of amino acids, 0.25 g/kg/hour of dextrose, the limiting factor, and 0.1 g/kg/hour of lipid). Recommended infusion period is 12 to 24 hours. (2.4)

DOSAGE FORMS AND STRENGTHS

- KABIVEN® is a sterile, hypertonic emulsion in a three chamber container. The individual chambers contain one of the following: amino acids and electrolytes, dextrose, or lipid injectable emulsion, respectively. (3)
- KABIVEN® is available in four sizes 2,566 mL, 2,053 mL, 1,540 mL and 1,026 mL. (3)

CONTRAINDICATIONS

- Known hypersensitivity to egg, soybean proteins, peanut proteins, corn or corn products, or to any of the active substances or excipients. (4)
- Severe hyperlipidemia or severe disorders of lipid metabolism with serum triglycerides >1,000 mg/dL. (4, 5.12)
- Inborn errors of amino acid metabolism. (4)
- Cardiopulmonary instability. (4)
- Hemophagocytic syndrome. (4)

WARNINGS AND PRECAUTIONS

- **Hypersensitivity reactions:** Monitor for signs or symptoms and discontinue infusion if reactions occur. (5.2)
- **Infection, fat overload, hyperglycemia and refeeding complications:** Monitor for signs and symptoms; monitor laboratory parameters. (5.3, 5.4, 5.5, 5.6, 5.7)

ADVERSE REACTIONS

The most common adverse reactions (≥3%) are nausea, pyrexia, hypertension, vomiting, decreased hemoglobin, decreased total protein, hypokalemia, decreased potassium, and increased gamma glutamyltransferase. (6.1)

To report SUSPECTED ADVERSE REACTIONS, contact Fresenius Kabi USA, LLC, Vigilance & Medical Affairs at 1-800-551-7176 or FDA at 1-800-FDA-1088 or www.fda.gov/medwatch.

DRUG INTERACTIONS

Coumarin and coumarin derivatives, including warfarin: Anticoagulant activity may be counteracted; monitor laboratory parameters. (7.1)

USE IN SPECIFIC POPULATIONS

Renal Impairment: Patients on dialysis or continuous renal replacement therapy may require additional protein supplementation to meet nutritional requirements. If required, adjust the volume of KABIVEN® administered based on serum electrolyte levels and fluid balance. (2.4, 8.7)

See 17 for PATIENT COUNSELING INFORMATION

Revised: August 2014

FULL PRESCRIBING INFORMATION: CONTENTS*

WARNING: DEATH IN PRETERM INFANTS

1 INDICATIONS AND USAGE

2 DOSAGE AND ADMINISTRATION

- 2.1 Administration
- 2.2 Important Preparation Instructions
- 2.3 Instructions for Use
- 2.4 Dosing Considerations

3 DOSAGE FORMS AND STRENGTHS

4 CONTRAINDICATIONS

5 WARNINGS AND PRECAUTIONS

- 5.1 Death in Preterm Infants
- 5.2 Hypersensitivity Reactions
- 5.3 Infections
- 5.4 Fat Overload Syndrome
- 5.5 Refeeding Syndrome
- 5.6 Diabetes/Hyperglycemia
- 5.7 Monitoring/Laboratory Tests
- 5.8 Vein Damage and Thrombosis
- 5.9 Precipitation with Ceftriaxone
- 5.10 Hepatobiliary Disorders
- 5.11 Electrolyte and Fluid Imbalance in Renal Impairment
- 5.12 Hypertriglyceridemia
- 5.13 Aluminum Toxicity
- 5.14 Interference with Laboratory Tests
- 5.15 Risk of Parenteral Nutrition Associated Liver Disease

6 ADVERSE REACTIONS

- 6.1 Clinical Trial Experience
- 6.2 Post-Marketing Experience

7 DRUG INTERACTIONS

- 7.1 Coumarin and Coumarin Derivatives

8 USE IN SPECIFIC POPULATIONS

- 8.1 Pregnancy
- 8.3 Nursing Mothers
- 8.4 Pediatric Use
- 8.5 Geriatric Use
- 8.6 Hepatic Impairment
- 8.7 Renal Impairment

10 OVERDOSAGE

11 DESCRIPTION

12 CLINICAL PHARMACOLOGY

- 12.1 Mechanism of Action
- 12.3 Pharmacokinetics

13 NONCLINICAL TOXICOLOGY

- 13.1 Carcinogenesis, Mutagenesis, Impairment of Fertility

15 REFERENCES

16 HOW SUPPLIED/STORAGE AND HANDLING

17 PATIENT COUNSELING INFORMATION

*Sections or subsections omitted from the full prescribing information are not listed.

1 **FULL PRESCRIBING INFORMATION**

2 **WARNING: DEATH IN PRETERM INFANTS**

- 3
- 4 • **Deaths in preterm infants after infusion of intravenous lipid emulsions have been reported in the medical literature.**
 - 6 • **Autopsy findings included intravascular fat accumulation in the lungs.**
 - 7 • **Preterm infants and low birth weight infants have poor clearance of intravenous lipid emulsion and increased free fatty acid plasma levels following lipid emulsion infusion.**

8
9
10
11 *[See Warnings and Precautions (5.1) and Use in Specific Populations (8.4)]*

12

13 **1 INDICATIONS AND USAGE**

14 KABIVEN[®] is indicated as a source of calories, protein, electrolytes and essential fatty acids for
15 adult patients requiring parenteral nutrition when oral or enteral nutrition is not possible, insufficient,
16 or contraindicated. KABIVEN[®] may be used to prevent essential fatty acid deficiency or treat
17 negative nitrogen balance in adult patients.

18 Limitation of Use:

19 KABIVEN[®] is not recommended for use in pediatric patients under the age of 2 years, including
20 preterm infants because the fixed content of the formulation does not meet the nutritional
21 requirements of this age group *[see Warnings and Precautions (5.1) and Use in Specific Populations*
22 *(8.4)]*.

23 **2 DOSAGE AND ADMINISTRATION**

24 **2.1 Administration**

- 25 • KABIVEN[®] is for intravenous infusion only into a central vein *[see Warnings and Precautions*
26 *(5.8)]*.
- 27 • Use a 1.2 micron in-line filter.
- 28 • Use of a vented intravenous administration set with the vent in the open position could result in
29 air embolism.
- 30 • Use a dedicated line without any connections. Multiple connections could result in air embolism
31 due to residual air being drawn from the primary container before administration of the fluid
32 from the secondary container is completed.
- 33 • Ceftriaxone must not be administered simultaneously with calcium-containing intravenous
34 solutions such as KABIVEN[®] via a Y-site due to precipitation. However, ceftriaxone and

1 KABIVEN® may be administered sequentially if the infusion lines are thoroughly flushed
2 between infusions with a compatible fluid [*see Warnings and Precautions (5.9)*].

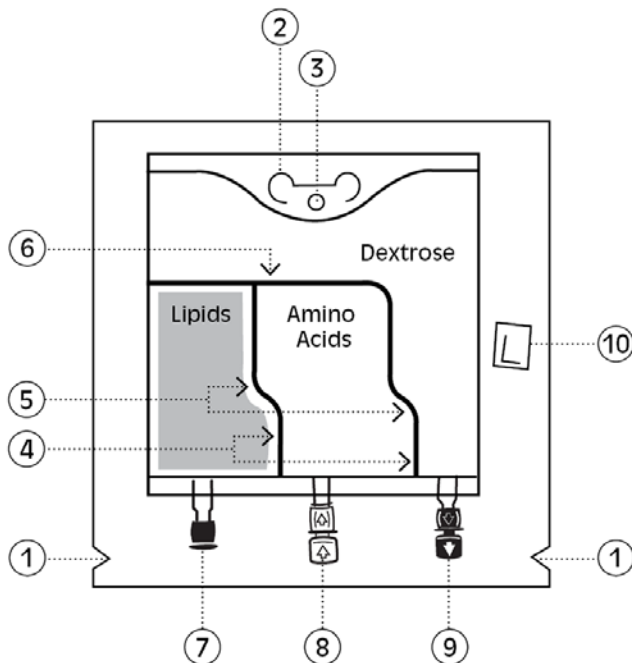
- 3 • Do not use administration sets and lines that contain di-2-ethylhexyl phthalate (DEHP).
4 Administration sets that contain polyvinyl chloride (PVC) components have DEHP as a
5 plasticizer.

6 **2.2 Important Preparation Instructions:**

- 7 • Inspect the bag prior to activation. Discard the bag in the following situations:
 - 8 ○ Evidence of damage to the bag
 - 9 ○ More than one chamber is white
 - 10 ○ Solution is yellow
 - 11 ○ Any seal is already broken
- 12 • Activate the bag [*see Dosage and Administration (2.3)*].
- 13 • Once the bag is activated, ensure the vertical seals between chambers are broken at least from
14 the bend in the seals and down to the ports. The upper sections of the vertical seals above the
15 bend and the horizontal seal may remain closed.
- 16 • It is recommended to mix the contents thoroughly by inverting the bag upside down to ensure a
17 homogenous admixture.
- 18 • Ensure the vertical seals between chambers are broken and the contents of all three chambers are
19 mixed together prior to infusion [*see Dosage and Administration (2.3)*].
- 20 • For total parenteral nutrition add multivitamins and trace elements via the additive port. Any
21 other additions to the bag should be evaluated by a pharmacist for compatibility. Questions about
22 compatibility may be directed to Fresenius Kabi USA, LLC Vigilance and Medical Affairs.
- 23 • When introducing additives, it is recommended to use 18 to 23 gauge needles with a maximum
24 length of 1.5 inches (40 mm) and to mix thoroughly after each addition, use aseptic technique
25 and add after the vertical seals have been broken (i.e. bag has been activated) and the three
26 components are mixed [*see Dosage and Administration (2.3)*].
- 27 • Parenteral drug products should be inspected visually for particulate matter and discoloration
28 prior to administration, whenever solution and container permit. Inspect KABIVEN® to ensure:
 - 29 ○ Precipitates have not formed during the mixing or addition of additives.
 - 30 ○ The emulsion has not separated. Separation of the emulsion can be visibly identified by a
31 yellowish streaking or the accumulation of yellowish droplets in the mixed emulsion.
- 32 Discard the admixture if any of the above are observed.

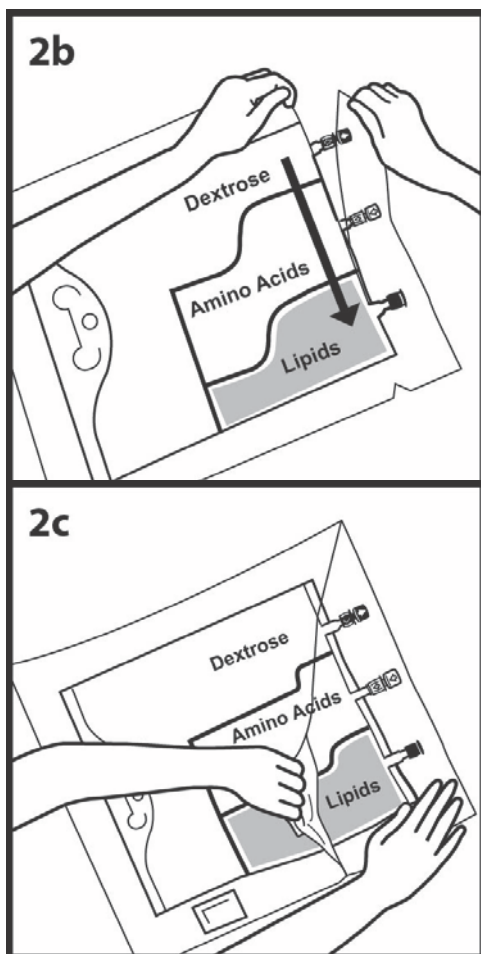
- 1 • KABIIVEN[®] should be used immediately after mixing and the introduction of additives. If not
2 used immediately, the storage time and conditions prior to use should not be longer than 24
3 hours at 2° to 8°C (36° to 46°F). After removal from storage at 2° to 8°C (36° to 46°F), the
4 admixture should be infused within 24 hours. Any mixture remaining must be discarded.
5

2.3 Instructions for Use



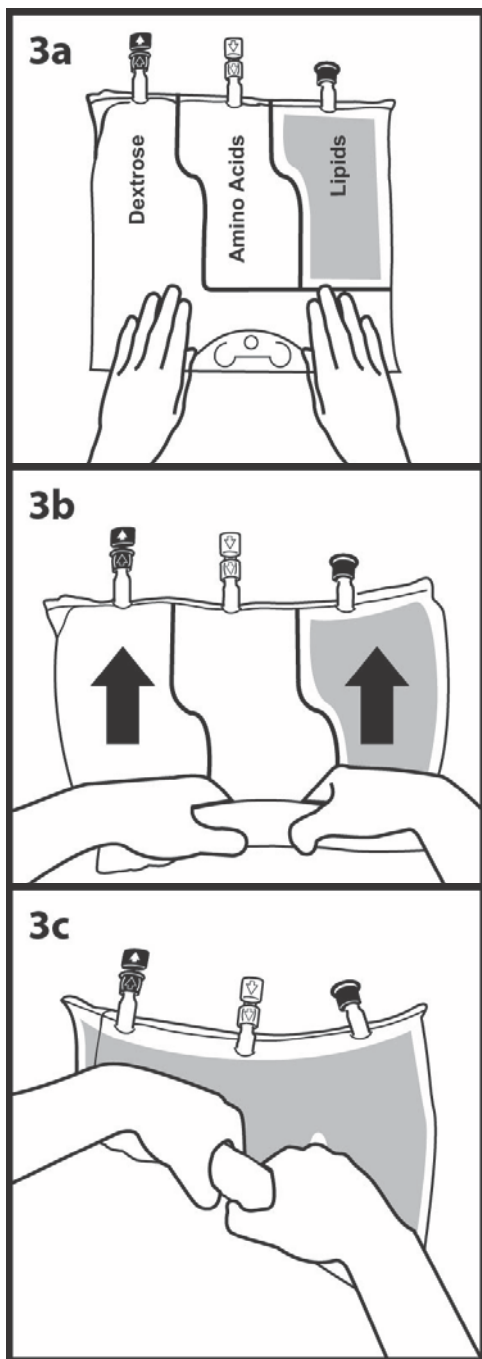
1. **Overpouch Notch**
2. **Handle**
3. **Hole** (For hanging the bag)
4. **Vertical Seals** (Must break to activate)
5. **Bends in Vertical Seals**
6. **Horizontal Seal** (May remain unopened)
7. **Blind Port** (NEVER use this port)
8. **WHITE Additive Port**
9. **BLUE Infusion Port**
10. **Oxygen Absorber** (Present between bag and inside overpouch-position may vary)

An instructional video is available at www.KabivenUSA.com.



1. **INSPECT BAG PRIOR TO ACTIVATION.**
 - **KABIVEN[®]** is a 3 chambered bag:
 - One chamber is **WHITE**.
 - Two chambers are **CLEAR**.
 - a) Discard bag if:
 - Overpouch is **OPENED OR DAMAGED**.
 - More than one chamber is **WHITE**.
 - Solution is **YELLOW**.
 - Seals are already **BROKEN**.
2. **REMOVE OVERPOUCH.**
 - a) Place bag on a clean, flat surface.
 - b) Tear from Overpouch Notch, located close to the ports.
 - c) Tear long sides open to access the inner bag.
 - d) Discard Overpouch and Oxygen Absorber.

1
2
3
4
5
6
7
8
9
10
11
12
13
14
15
16
17
18
19
20
21
22
23
24
25
26
27
28
29
30



3. ACTIVATE BAG.

- Place bag on a clean, flat surface with text side up and ports pointing away from you.
- Roll **tightly** from top of bag down toward ports.
- Apply pressure** until both Vertical Seals break and entire contents are white. It may take up to 5 seconds of continued pressure to break Vertical Seals.

NOTE: Both Vertical Seals must be broken from bends to ports. Upper section of Vertical Seals and Horizontal Seal may remain unbroken.

- After both Vertical Seals are broken, mix contents thoroughly by inverting the bag at least three times to ensure a homogenous mixture.

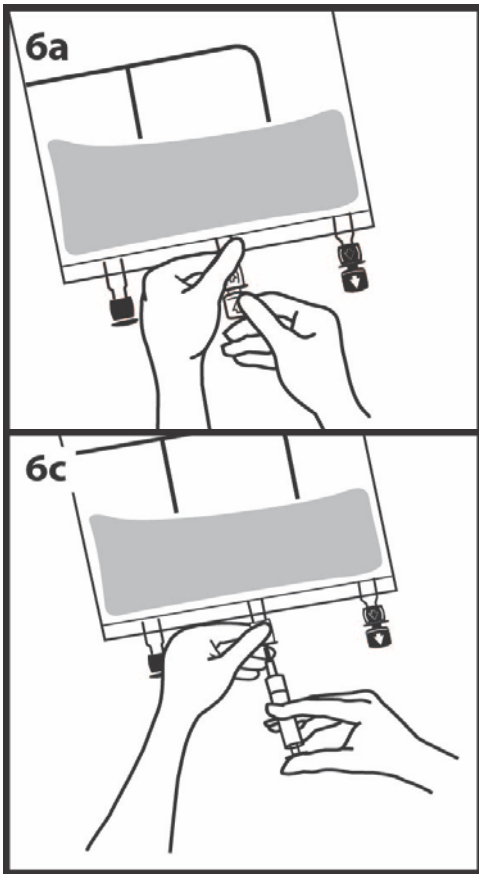
4. INSPECT BAG TO CONFIRM ACTIVATION.

- An activated bag has both Vertical Seals broken from bends to ports and entire contents are white.

5. IDENTIFY CORRECT PORT.

- Additive port is **WHITE** with arrow pointing toward bag.
- Infusion port is **BLUE** with arrow pointing away from bag.

1
2
3
4
5
6
7
8
9
10
11
12
13
14
15
16
17
18
19
20
21
22
23
24



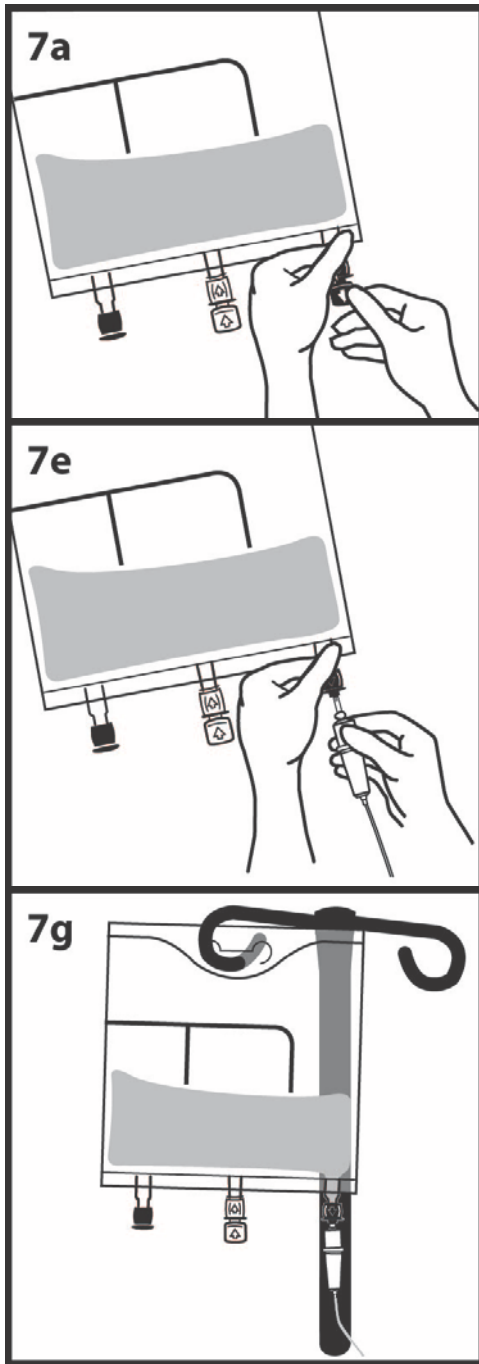
6. MAKE ADDITIONS (if prescribed).

WARNING: Ensure additives are compatible.

- a) Immediately before injecting additives, break off **WHITE** Additive Port cap with the arrow pointing toward the bag.
- b) Hold base of Additive Port horizontally.
- c) Insert needle horizontally through the center of Additive Port's septum and inject additives.
- d) Repeat as necessary using aseptic technique.
- e) Mix thoroughly after each addition.

NOTE: The membrane of Additive Port is sterile at first use. Use aseptic technique for subsequent additions. The septum can be pierced up to 10 times with the recommended needle size 18 – 23 G 1½ inches (40mm).

1
2
3
4
5
6
7
8
9
10
11
12
13
14
15
16
17
18
19
20
21



7. SPIKE AND HANG BAG.

- Immediately before inserting the infusion set, break off **BLUE** Infusion Port cap with the arrow pointing away from the bag.
- Use a non-vented infusion set or close the air-inlet on a vented set. It is recommended to use 1.2 μ m in-line filter.
- Close the roller clamp of the infusion set.
- Hold the base of Infusion Port.
- Insert spike through Infusion Port by rotating your wrist slightly until the spike is inserted.
- Lift and hold the bag with both hands.
- Hang the bag by Hole below Handle.

NOTE: The membrane of Infusion Port is sterile at first use. Use infusion sets (according to ISO Number 8536-4) with an external spike diameter of 5.5 to 5.7 mm.

8. FOR SINGLE USE ONLY

- Discard unused portion.

2.4 Dosing Considerations

The dosage of KABIVEN[®] should be individualized based on the patient’s clinical condition (ability to adequately metabolize amino acids, dextrose and lipids), body weight and nutritional/fluid requirements, as well as additional energy given orally/enterally to the patient.

KABIVEN[®] is a combination of amino acids, electrolytes, dextrose, and lipids in a fixed volume and concentration. The dosage selection is based upon fluid requirements which can be used in conjunction with the nutritional requirements to determine final dosage [See Table 1]. KABIVEN[®] meets the total nutritional requirements for protein, dextrose, and lipids in stable patients, and can be individualized to meet specific needs with the addition of nutrients. The maximum infusion rate is based upon the dextrose component.

Prior to administration of KABIVEN[®], correct severe fluid electrolyte and acid-base disorders. Before starting the infusion, obtain serum triglyceride levels to establish the baseline value.

Recommended Adult Dosage

The recommended dosage of KABIVEN[®] in adults is 19 to 38 mL/kg/day. The recommended daily nutritional requirements for protein, dextrose and lipids compared to the amount of nutrition provided by KABIVEN[®] are shown in Table 1.

The maximum daily dosage of KABIVEN[®] in adults should not exceed 40 mL/kg/day.

In patients with serum triglyceride concentrations above 400 mg/dL, stop the KABIVEN[®] infusion and monitor serum triglyceride levels. Once the triglycerides are <400 mg/dL, restart KABIVEN[®] at a lower infusion rate and advance rate in smaller increments towards target dosage, checking the triglyceride levels prior to each adjustment [see *Contraindications (4) and Warnings and Precautions (5.12)*].

Table 1: Nutritional Comparison

	Nutrition Provided by KABIVEN [®] recommended dosage	Recommended Nutritional Requirements ¹	
		Stable Patients	Critically Ill Patients*
Fluid mL/kg/day	19 to 38	30 to 40	Minimum needed to deliver adequate macronutrients
Protein** g/kg/day	0.6 to 1.3	0.8 to 1.0	1.5 to 2
Nitrogen g/kg/day	0.1 to 0.2	0.13 to 0.16	0.24 to 0.3
Dextrose g/kg/day	1.9 to 3.7	≤10	≤5.8
Lipids g/kg/day	0.7 to 1.5	1	≤1
Total Energy Requirement kcal/kg/day	16 to 32	20 to 30	25 to 30

1 * Do not use in patients with conditions that are contraindicated [*see Contraindications (4)*].

2 ** Protein is provided as amino acids. When infused intravenously amino acids are
3 metabolized and utilized as the building blocks of protein.

4 Treatment with KABIVEN[®] may be continued for as long as is required by the patient's condition.

5 **Dosing in Renal Impairment**

6 In patients with renal impairment, the dosage of KABIVEN[®] should be the recommended adult
7 dosage (see above). Prior to administration, correct severe fluid or electrolyte imbalances. Closely
8 monitor serum electrolyte levels and adjust the volume of KABIVEN[®] administered as required [*see*
9 *Warnings and Precautions (5.11)*].

10 Renal patients not needing dialysis require 0.6 to 0.8 g of protein/kg/day. Serum electrolyte levels
11 should be closely monitored. Patients on hemodialysis or continuous renal replacement therapy
12 should receive 1.2 to 1.8 g of protein/kg/day up to a maximum of 2.5 g of protein/kg/day based on
13 nutritional status and estimated protein losses². The KABIVEN[®] dosage can be adjusted based on the
14 treatment for the renal impairment, supplementing protein as indicated. If required, additional amino
15 acids may be added to the KABIVEN[®] bag or infused separately. Compatibility of additions should
16 be evaluated by a pharmacist and questions may be directed to Fresenius Kabi USA, LLC Vigilance
17 and Medical Affairs.

18 **Infusion Duration and Rate**

19 The recommended duration of infusion for KABIVEN[®] is between 12 and 24 hours, depending on
20 the clinical situation.

21 The maximum infusion rate of KABIVEN[®] is 2.6 mL/kg/hour. This corresponds to 0.09 g/kg/hour
22 of amino acids, 0.25 g/kg/hour of dextrose (the rate limiting factor) and 0.1 g/kg/hour of lipids.

23 **Dosing Instructions**

- 24 1. Determine the fluid requirements (19 to 38 mL/kg/day) and the patient's nutritional requirements
25 (see Table 1) to be delivered, and then select the corresponding KABIVEN[®] bag.
- 26 2. Determine the preferred duration of infusion (12 to 24 hours).
- 27 3. Ensure that the rate of infusion (KABIVEN[®] dosage in mL/kg/day divided by the preferred
28 duration of infusion (hours) does not exceed the maximum infusion rate for the patient (i.e., 2.6
29 mL/kg/hour). The infusion rate may need to be reduced and duration of infusion increased in
30 order not to exceed the maximum infusion rate.
- 31 4. Once the infusion rate in mL/kg/hour has selected, calculate the infusion rate (mL/hour) using
32 the patient's weight.

5. Compare the patient’s nutrient requirements with the amount supplied by KABIVEN®. Discuss with a pharmacist any additions that may be required.

3 DOSAGE FORMS AND STRENGTHS

KABIVEN® is a sterile, hypertonic emulsion in a three chamber container. The individual chambers contain one of the following respectively: amino acids and electrolytes, dextrose, or lipid injectable emulsion. Table 2 describes the individual components of KABIVEN®.

Table 2: Contents of KABIVEN® when mixed

How Supplied	2,566 mL	2,053 mL	1,540 mL	1,026 mL
Composition of KABIVEN®				
Soybean Oil, USP (g/100 mL)			3.9	
Dextrose Anhydrous, USP (g/100 mL)			9.8	
Amino Acids, USP (g/100 mL)			3.31	
Total Nitrogen (mg/100 mL)			526	
Essential amino acids (mg/100 mL)	Lysine, USP (added as the hydrochloride salt)		263	
	Phenylalanine, USP		231	
	Leucine, USP		231	
	Valine, USP		213	
	Threonine, USP		164	
	Methionine, USP		164	
	Isoleucine, USP		164	
	Tryptophan, USP		55	
Nonessential amino acids (mg/100 mL)	Alanine, USP		467	
	Arginine, USP		330	
	Glycine, USP		231	
	Proline, USP		199	
	Histidine, USP		199	
	Glutamic Acid		164	
	Serine, USP		131	
	Aspartic Acid, USP		99	
	Tyrosine, USP		6.7	
Electrolytes (mg/100 mL)	Sodium Acetate Trihydrate, USP		239	
	Potassium Chloride, USP		174	
	Sodium Glycerophosphate Anhydrous		147	
	Magnesium Sulfate Heptahydrate, USP		96	
	Calcium Chloride Dihydrate, USP		29	
Electrolyte Profile ¹ (mEq/L)	Sodium ²		31 (31 mmol/L)	
	Potassium		23 (23 mmol/L)	
	Magnesium		7.8 (3.9 mmol/L)	
	Calcium		3.8 (1.9 mmol/L)	
	Phosphorous ³		N.A. (9.7 mmol/L)	
	Acetate ⁴		38 (38 mmol/L)	
	Chloride ⁵		45 (45 mmol/L)	
	Sulfate ⁶		7.8 (3.9 mmol/L)	

Calorie Content (kcal/L)	From Dextrose	330
	From Lipid	390 ⁷
	From Amino Acids	130
	Total	850
pH ⁸		5.6
Osmolarity (mOsm/L)		1060

- 1 1. Balanced by ions from amino acids
- 2 2. Contributed by sodium glycerophosphate and sodium acetate
- 3 3. Contributed by sodium glycerophosphate and phospholipids
- 4 4. Derived from sodium acetate and glacial acetic acid (for pH adjustment)
- 5 5. Contributed by calcium chloride, lysine hydrochloride, and potassium chloride
- 6 6. Derived from magnesium sulfate
- 7 7. Total caloric value including lipid, phospholipid and glycerin
- 8 8. pH of amino acid with electrolyte solution was adjusted with glacial acetic acid, USP and pH of
- 9 lipid emulsion was adjusted with sodium hydroxide, USP

10 **4 CONTRAINDICATIONS**

11 The use of KABIVEN[®] is contraindicated in patients with the following:

- 12 • Known hypersensitivity to egg, soybean proteins, peanut proteins, corn or corn products or
- 13 to any of the active substances or excipients;
- 14 • Severe hyperlipidemia or severe disorders of lipid metabolism characterized by
- 15 hypertriglyceridemia (serum triglyceride concentration >1,000 g/dL) [*see Warnings and*
- 16 *Precautions (5.12)*].
- 17 • Inborn error of amino acid metabolism
- 18 • Cardiopulmonary instability (including pulmonary edema, cardiac insufficiency, myocardial
- 19 infarction, acidosis and hemodynamic instability requiring significant vasopressor support)
- 20 • Hemophagocytic syndrome

21 **5 WARNINGS AND PRECAUTIONS**

22 **5.1 Death in Preterm Infants**

23 Deaths in preterm infants after infusion of intravenous lipid emulsions have been reported. Autopsy

24 findings included intravascular lipid accumulation in the lungs.

25 Preterm and small for gestational age infants have poor clearance of intravenous lipid

26 emulsion and increased free fatty acid plasma levels following lipid emulsion infusion.

27 The safe and effective use of KABIVEN[®] injection in pediatric patients, including preterm infants,

28 has not been established. KABIVEN[®] is not recommended for use in pediatric patients under the

1 age of 2 years including preterm infants.

2 **5.2 Hypersensitivity Reactions**

3 Stop infusion immediately and treat patient accordingly if signs or symptoms of a hypersensitivity or
4 allergic reaction develop. Signs or symptoms may include: tachypnea, dyspnea, hypoxia,
5 bronchospasm, tachycardia, hypotension, cyanosis, vomiting, nausea, headache, sweating, dizziness,
6 altered mentation, flushing, rash, urticaria, erythema, pyrexia and chills.

7 **5.3 Infections**

8 Patients who require parenteral nutrition are at high risk of infections due to malnutrition
9 and their underlying disease state. Infection and sepsis may occur as a result of the use of
10 intravenous catheters to administer parenteral nutrition, poor maintenance of catheters, or
11 immunosuppressive effects of illness, drugs, and parenteral formulations.

12 Decrease the risk of septic complications with heightened emphasis on aseptic technique in
13 catheter placement and maintenance, as well as aseptic technique in the preparation of the
14 nutritional formula.

15 Monitor for signs and symptoms (including fever and chills) of early infections, including laboratory
16 test results (including leukocytosis and hyperglycemia) and frequent checks of the parenteral access
17 device.

18 **5.4 Fat Overload Syndrome**

19 Fat overload syndrome is a rare condition that has been reported with intravenous lipid formulations.
20 A reduced or limited ability to metabolize the lipid contained in KABIVEN[®] accompanied by
21 prolonged plasma clearance may result in a syndrome characterized by a sudden deterioration in the
22 patient's condition accompanied by fever, anemia, leukopenia, thrombocytopenia, coagulation
23 disorders, hyperlipidemia, liver fatty infiltration (hepatomegaly), deteriorating liver function, and
24 central nervous system manifestations (e.g., coma). The cause of the fat overload syndrome is
25 unclear. The syndrome is usually reversible when the infusion of the lipid emulsion is stopped.
26 Although it has been most frequently observed when the recommended lipid dosage was exceeded,
27 cases have also been described where the lipid formulation was administered according to
28 instructions.

29 **5.5 Refeeding Syndrome**

30 Refeeding severely undernourished patients with parenteral nutrition may result in the refeeding
31 syndrome, characterized by the intracellular shift of potassium, phosphorus, and magnesium as the
32 patient becomes anabolic. Thiamine deficiency and fluid retention may also develop. Carefully

1 monitor severely undernourished patients and slowly increase their nutrient intakes, while avoiding
2 overfeeding, to prevent these complications.

3 **5.6 Diabetes/Hyperglycemia**

4 KABIVEN[®] should be used with caution in patients with diabetes mellitus or hyperglycemia. With
5 the administration of KABIVEN[®], hyperglycemia, and hyperosmolar syndrome may result.
6 Administration of dextrose at a rate exceeding the patient's utilization rate may lead to
7 hyperglycemia, coma and death. Monitor blood glucose levels and treat hyperglycemia to maintain
8 optimum levels while infusing KABIVEN[®]. Insulin may be administered or adjusted to maintain
9 optimal blood glucose levels during KABIVEN[®] administration.

10 **5.7 Monitoring/Laboratory Tests**

11 Routine Monitoring

- 12 • Frequent clinical evaluation and laboratory determinations are necessary for proper
13 monitoring during administration.
- 14 • Monitor fluid status closely in patients with heart failure or pulmonary edema.
- 15 • Monitor serum triglycerides, fluid and electrolyte status, serum osmolality, blood glucose,
16 liver and kidney function, and blood count, including platelet and coagulation parameters,
17 throughout treatment. In situations of severely elevated electrolyte levels stop KABIVEN[®]
18 until levels have been corrected

19 Essential Fatty Acids

20 Monitoring patients for signs and symptoms of essential fatty acid deficiency (EFAD) is
21 recommended. Laboratory tests are available to determine serum fatty acids levels. Reference values
22 should be consulted to help determine adequacy of essential fatty acid status. Increasing essential
23 fatty acid intake (enterally or parenterally) is effective in treating and preventing EFAD.

24 In KABIVEN[®], the mean composition of linoleic acid (an omega-6 essential fatty acid) is 21 mg/mL
25 (range 19 to 23 mg/mL) and alpha-linolenic acid (an omega-3 essential fatty acid) is 2.6 mg/mL
26 (range 2.0 to 4.3 mg/mL). There are insufficient long-term data to determine whether KABIVEN[®]
27 can supply essential fatty acids in adequate amounts in patients who may have increased
28 requirements.

29 **5.8 Vein Damage and Thrombosis**

30 KABIVEN[®] is indicated for administration into a central vein only, such as the superior vena cava.
31 The infusion of hypertonic nutrient injections into a peripheral vein may result in vein irritation, vein
32 damage, and/or thrombosis.

33

1 **5.9 Precipitation with Ceftriaxone**

2 Precipitation of ceftriaxone-calcium can occur when ceftriaxone is mixed with calcium-containing
3 parenteral nutrition solutions, such as KABIVEN® in the same intravenous administration line.
4 Ceftriaxone must not be administered simultaneously with KABIVEN® via a Y-site. However,
5 ceftriaxone and KABIVEN® may be administered sequentially if the infusion lines are thoroughly
6 flushed between infusions with a compatible fluid [*see Dosing and Administration (2.1)*].

7 **5.10 Hepatobiliary Disorders**

8 Hepatobiliary disorders are known to develop in some patients without preexisting liver disease who
9 receive parenteral nutrition, including cholecystitis, cholelithiasis, cholestasis, hepatic steatosis,
10 fibrosis and cirrhosis, possibly leading to hepatic failure. The etiology of these disorders is thought to
11 be multifactorial and may differ between patients.

12 Increase of blood ammonia levels and hyperammonemia may occur in patients receiving amino acid
13 solutions. In some patients this may indicate hepatic insufficiency or the presence of an inborn error
14 of amino acid metabolism [*see Contraindications (4)*] or hepatic insufficiency.

15 Monitor liver function parameters and ammonia. Patients developing signs of hepatobiliary
16 disorders should be assessed early by a clinician knowledgeable in liver diseases in order to identify
17 causative and contributory factors, and possible therapeutic and prophylactic interventions.

18 **5.11 Electrolyte Imbalance and Fluid Overload in Renal Impairment**

19 Patients with renal impairment, such as pre-renal azotemia, renal obstruction and protein-losing
20 nephropathy may be at increased risk of electrolyte and fluid volume imbalance. KABIVEN® should
21 be used with caution in patients with renal impairment. KABIVEN® dosage may require adjustment
22 with specific attention to fluid, protein and electrolyte content in these patients.

23 Monitor renal function parameters. Patients developing signs of renal impairment should be
24 assessed early by a clinician knowledgeable in renal disease in order to determine the appropriate
25 KABIVEN® dosage and other treatment options.

26 **5.12 Hypertriglyceridemia**

27 To evaluate the patient's capacity to eliminate and metabolize the infused lipid emulsion, measure
28 serum triglycerides before the start of infusion (baseline value), with each increase in dosage, and
29 regularly throughout treatment.

30 Reduce dose of KABIVEN® and monitor serum triglyceride levels in patients with serum
31 triglyceride concentrations above 400 mg/dL to avoid the clinical consequences associated with
32 hypertriglyceridemia. Serum triglyceride levels above 1,000 mg/dL have been associated with an
33 increased risk of pancreatitis.

1 Impaired lipid metabolism with hypertriglyceridemia may occur in conditions such as inherited lipid
2 disorders, obesity, diabetes mellitus, and metabolic syndrome. In these cases, increased triglycerides
3 can also be increased by dextrose and/or overfeeding. Monitor overall energy intake and other
4 sources of lipid and dextrose, as well as drugs that may interfere with lipid and dextrose metabolism.

5 **5.13 Aluminum Toxicity**

6 KABIVEN[®] contains no more than 25 mcg/L of aluminum.

7 The aluminum contained in KABIVEN[®] may reach toxic levels with prolonged parenteral
8 administration in patients with impaired kidney function. Preterm infants are at greater risk because
9 their kidneys are immature, and they require large amounts of calcium and phosphate solutions that
10 contain aluminum. Patients with impaired kidney function, including preterm infants, who receive
11 parenteral levels of aluminum at greater than 4 to 5 mcg/kg/day, accumulate aluminum at levels
12 associated with central nervous system and bone toxicity. Tissue loading may occur at even lower
13 rates of administration of total parenteral nutrition products.

14 **5.14 Interference with Laboratory Tests**

15 High levels of lipids in plasma may interfere with some laboratory blood tests such as hemoglobin,
16 triglycerides, bilirubin, LDH, and oxygen saturation, if blood is sampled before lipid has been
17 cleared from the bloodstream. Lipids are normally cleared after a lipid-free interval of 5 to 6 hours in
18 most patients.

19 KABIVEN[®] contains Vitamin K₁ which may interfere with anticoagulant activity [*see Drug*
20 *Interactions (7.1)*].

21 **5.15 Risk of Parenteral Nutrition Associated Liver Disease**

22 Parenteral Nutrition Associated Liver Disease (PNALD) has been reported in patients who receive
23 parenteral nutrition for extended periods of time, especially preterm infants, and can present as
24 cholestasis or steatohepatitis. The exact etiology is unknown and is likely multifactorial.
25 Intravenously administered phytosterols (plant sterols) contained in plant-derived lipid formulations
26 have been associated with development of PNALD although a causal relationship has not been
27 established. If KABIVEN[®] treated patients develop liver test abnormalities consider discontinuation
28 or dosage reduction.

29 **6 ADVERSE REACTIONS**

30 The following serious adverse reactions are discussed in greater detail in other sections of the
31 prescribing information.

- 32 • Hypersensitivity reactions [*see Warnings and Precautions (5.2)*]
- 33 • Infections [*see Warnings and Precautions (5.3)*]

- Fat overload syndrome [see Warnings and Precautions (5.4)]
- Refeeding Syndrome [see Warnings and Precautions (5.5)]
- Diabetes/Hyperglycemia [see Warnings and Precautions (5.6)]
- Vein damage and thrombosis [see Warnings and Precautions (5.8)]
- Hepatobiliary disorders [see Warnings and Precautions (5.10, 5.15)]
- Renal impairment [see Warnings and Precautions (5.11)]
- Hypertriglyceridemia [see Warnings and Precautions (5.12)]
- Aluminum toxicity [see Warnings and Precautions (5.13)]

6.1 Clinical Trial Experience

Because clinical trials are conducted under widely varying conditions, adverse reaction rates observed in the clinical trials of a drug cannot be directly compared to rates in the clinical trials of another drug and may not reflect the rates observed in practice.

The clinical data described for KABIVEN[®] reflects exposure in 145 patients exposed for 7 days to 4 weeks in 7 active-controlled trials. The pooled population exposed to KABIVEN[®] was 25 to 87 years old, 35% female, 99% Caucasian. The enrolled patients had varied underlying conditions such as gastrointestinal disorders (41%) neoplasms (48%), vascular disorders (35%) and other surgical procedures (21%). Most patients received central intravenous infusion doses of $\geq 80\%$ of their target mean daily exposure.

Adverse reactions occurring in at least 1% of patients who received KABIVEN[®] are shown in Table 3.

Table 3: Adverse Reactions in >1% of Patients Treated with KABIVEN[®]

Adverse reaction	KABIVEN [®] N=145 (%)
Nausea	22 (15)
Pyrexia	13 (9)
Hypertension	12 (8)
Vomiting	8 (6)
Hemoglobin decreased	8 (6)
Protein total decreased	6 (4)
Hypokalemia	6 (4)
Blood potassium decreased	6 (4)
Gamma-glutamyltransferase increased	6 (4)
Hyperglycemia	3 (2)
Blood alkaline phosphatase increased	2 (1)
Blood calcium decreased	2 (1)
Prothrombin time prolonged	2 (1)
Pruritus	2 (1)
Tachycardia	2 (1)

* Terms as reported in clinical studies

1 Less common adverse reactions in $\leq 1\%$ of patients who received KABIVEN[®] were hyperkalemia,
2 hypertriglyceridemia, headache, dizziness, dysgeusia, rash, eczema, blood glucose increased, and
3 increase in blood triglycerides.

4 **6.2 Post-Marketing Experience**

5 The following additional adverse reactions have been identified during post-approval use of
6 KABIVEN[®] in countries where it is registered. Because these reactions are reported voluntarily from
7 a population of uncertain size, it is not always possible to reliably estimate their frequency or
8 establish a causal relationship to product exposure.

- 9 • Hepatobiliary disorders: cholestasis
- 10 • Infections and infestations: infection
- 11 • Nervous system disorders: subependymal hemorrhage

12 **7 DRUG INTERACTIONS**

13 **7.1 Coumarin and Coumarin Derivatives**

14 The soybean oil present in KABIVEN[®] has vitamin K₁. Vitamin K₁ can reverse the anticoagulant
15 activity of coumarin and coumarin derivatives, including warfarin, which works by blocking
16 recycling of vitamin K₁. Monitor laboratory parameters for anticoagulant activity in patients who are
17 on both KABIVEN[®] and coumarin or coumarin derivatives.

18 **8 USE IN SPECIFIC POPULATIONS**

19 **8.1 Pregnancy**

20 **Pregnancy Category C**

21 *Risk Summary*

22 There are no adequate or well-controlled studies in pregnant women with KABIVEN[®].
23 Additionally, animal reproduction studies have not been conducted with lipid injectable emulsion
24 with amino acids and electrolytes and dextrose. It is not known whether KABIVEN[®] can cause fetal
25 harm when administered to a pregnant woman. KABIVEN[®] should be given to a pregnant woman
26 only if clearly needed.

27 *Clinical Considerations*

28 Based on clinical practice guidelines, parenteral nutrition should be considered in cases of severe
29 maternal malnutrition where nutritional requirements cannot be fulfilled by oral food intake because
30 of the risks to the fetus associated with severe malnutrition, such as preterm delivery, low birth
31 weight, intrauterine growth restriction, congenital malformations and perinatal mortality.
32

1 **8.3 Nursing Mothers**

2 It is not known whether KABIVEN® is present in human milk. Because many drugs are present in
3 human milk, caution should be exercised when KABIVEN® is administered to a nursing woman.

4 **8.4 Pediatric Use**

5 The safety and effectiveness of KABIVEN® in pediatric patients has not been established.

6 Deaths in preterm infants after infusion of intravenous lipid emulsion have been reported [*see*
7 *Warnings and Precautions (5.1)*]. Patients, particularly preterm infants, are at risk for aluminum
8 toxicity [*see Warnings and Precautions (5.13)*].

9 KABIVEN® is not recommended for use in pediatric patients under the age of two years, including
10 preterm infants, as the fixed content of the formulation does not meet the nutritional requirements of
11 this age group due to the following reasons:

- 12 1. Calcium and dextrose needs are not met and lipids, protein and magnesium exceed
13 requirements.
- 14 2. The product does not contain the amino acids cysteine and taurine, considered conditionally
15 essential for neonates and infants.

16 Patients, including pediatric patients, may be at risk for PNALD [*see Warnings and Precautions*
17 *(5.15)*].

18 Newborns – especially those born premature and with low birth weight – are at increased risk of
19 developing hypo – or hyperglycemia and therefore need close monitoring during treatment with
20 intravenous dextrose solutions to ensure adequate glycemic control in order to avoid potential long
21 term adverse effects. Hypoglycemia in the newborn can cause prolonged seizures, coma and brain
22 damage. Hyperglycemia has been associated with intraventricular hemorrhage, late onset bacterial
23 and fungal infection, retinopathy of prematurity, necrotizing enterocolitis, bronchopulmonary
24 dysplasia, prolonged length of hospital stay, and death.

25 **8.5 Geriatric Use**

26 Clinical studies of KABIVEN® did not include sufficient numbers of patients aged 65 and over to
27 determine whether they respond differently from other younger patients. Other reported clinical
28 experience has not identified differences in responses between the elderly and younger patients. In
29 general, dose selection for an elderly patient should be cautious, usually starting at the low end of the
30 dosing range, reflecting the greater frequency of decreased hepatic, renal, or cardiac function, and of
31 concomitant disease or drug therapy.

32 **8.6 Hepatic Impairment**

1 In patients with impaired liver function KABIVEN® should be administered with caution.
2 Frequent clinical evaluation and laboratory tests to monitor liver function such as bilirubin and liver
3 function parameters should be conducted [see *Warnings and Precautions (5.10)*].

4 **8.7 Renal Impairment**

5 In patients with impaired renal function, KABIVEN® should be administered with caution. Frequent
6 clinical evaluation and laboratory tests to monitor renal function such as serum electrolytes
7 (especially phosphate and potassium) and fluid balance should be conducted [see *Dosage and*
8 *Administration (2.4) and Warnings and Precautions (5.11)*].

9 **10 OVERDOSAGE**

10 In the event of overdose, fat overload syndrome may result [see *Warnings and Precautions 5.4*].
11 Stop the infusion of KABIVEN® to allow lipids to clear from serum. The effects are usually
12 reversible after the lipid infusion is stopped. If medically appropriate, further intervention may be
13 indicated. The lipid administered and fatty acids produced are not dialyzable.

14 **11 DESCRIPTION**

15 KABIVEN® is a sterile, hypertonic emulsion, for central venous administration, in a Three Chamber
16 Bag. The product contains no added sulfites.

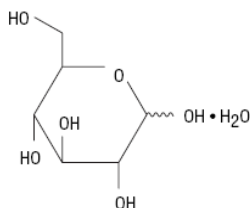
17 Chamber 1 contains Dextrose solution for fluid replenishment and caloric supply.

18 Chamber 2 contains the Amino Acid solution with Electrolytes, which comprises essential and
19 nonessential amino acids provided with electrolytes.

20 Chamber 3 contains Intralipid® 20% (a 20% Lipid Injectable Emulsion), prepared for intravenous
21 administration as a source of calories and essential fatty acids.

22 See below for formulations of each chamber and Table 2 for strength, pH, osmolarity, ionic
23 concentration and caloric content of KABIVEN® when all the chambers are mixed together.

24 **Chamber 1:** Contains sterile, hypertonic solution of Dextrose, USP in water for injection with a pH
25 range of 3.5 to 5.5. Dextrose, USP is chemically designated D-glucose, monohydrate (C₆H₁₂O₆ •
26 H₂O) and has the following structure:





1 **Chamber 2:** Contains a sterile, solution of amino acids and electrolytes in water for injection. In
2 addition, glacial acetic acid has been added to adjust the pH so that the final solution pH is 5.4 to 5.8.
3 The formulas for the individual electrolytes and amino acids are as follows:
4

1

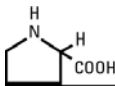

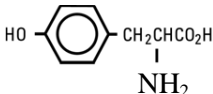
Electrolytes

Sodium Acetate Trihydrate, USP	$\text{CH}_3\text{COONa}_x3\text{H}_2\text{O}$
Potassium Chloride, USP	KCl
Sodium Glycerophosphate	$\text{C}_3\text{H}_5(\text{OH})_2\text{PO}_4\text{Na}_2 \cdot x\text{H}_2\text{O}$
Magnesium Sulfate Heptahydrate, USP	$\text{MgSO}_4 \cdot 7\text{H}_2\text{O}$
Calcium Chloride Dihydrate, USP	$\text{CaCl}_2 \cdot 2\text{H}_2\text{O}$

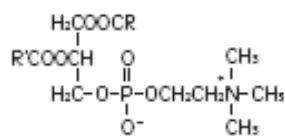
Essential Amino Acids

Lysine (added as the hydrochloride salt)	$\text{H}_2\text{N}(\text{CH}_2)_4\text{CH}(\text{NH}_2)\text{COOH} \cdot \text{HCl}$
Phenylalanine	
Leucine	$(\text{CH}_3)_2\text{CHCH}_2\text{CH}(\text{NH}_2)\text{COOH}$
Valine	$(\text{CH}_3)_2\text{CHCH}(\text{NH}_2)\text{COOH}$
Threonine	$\text{CH}_3\text{CH}(\text{OH})\text{CH}(\text{NH}_2)\text{COOH}$
Methionine	$\text{CH}_3\text{S}(\text{CH}_2)_2\text{CH}(\text{NH}_2)\text{COOH}$
Isoleucine	$\text{CH}_3\text{CH}_2\text{CH}(\text{CH}_3)\text{CH}(\text{NH}_2)\text{COOH}$
Tryptophan	

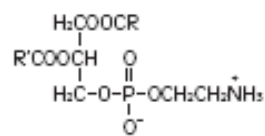
Nonessential Amino Acids

Alanine	$\text{CH}_3\text{CH}(\text{NH}_2)\text{COOH}$
Arginine	$\text{H}_2\text{NC}(\text{NH})\text{NH}(\text{CH}_2)_3\text{CH}(\text{NH}_2)\text{COOH}$
Glycine	$\text{H}_2\text{NCH}_2\text{COOH}$
Proline	
Histidine	
Glutamic Acid	$\text{HOOC}(\text{CH}_2)_2\text{CH}(\text{NH}_2)\text{COOH}$
Serine	$\text{HOCH}_2\text{CH}(\text{NH}_2)\text{COOH}$
Aspartic Acid	$\text{HOOCCH}_2\text{CH}(\text{NH}_2)\text{COOH}$
Tyrosine	

2

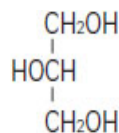


Phosphatidylcholine



Phosphatidylethanolamine

1
2 Glycerin is chemically designated C₃H₈O₃ and is a clear colorless, hygroscopic syrupy liquid. It has
3 the following structural formula:



4
5 The container-solution unit is a closed system and is not dependent upon entry of external air during
6 administration. The container is overwrapped to provide protection from the physical environment
7 and to provide an additional oxygen and moisture barrier when necessary. An oxygen absorber is
8 placed between the inner bag and the overpouch.

9 This container is not made with natural rubber latex or polyvinyl chloride (PVC).

10 **12 CLINICAL PHARMACOLOGY**

11 **12.1 Mechanism of Action**

12 KABIVEN[®] is used as a supplement or as the sole source of nutrition in patients, providing
13 macronutrients (amino acids, dextrose and lipids) and micronutrients (electrolytes) parenterally.

14 The amino acids provide the structural units that make up proteins and are used to synthesize
15 proteins and other biomolecules or are oxidized to urea and carbon dioxide as a source of energy.

16 The administered dextrose is oxidized to carbon dioxide and water, yielding energy.

17 Intravenously administered lipids provide biologically utilizable source of calories and essential fatty
18 acids. Fatty acids serve as an important substrate for energy production. The most common
19 mechanism of action for energy derived from fatty acid metabolism is beta-oxidation. Fatty acids
20 are important for membrane structure and function, precursors for bioactive molecules (such as
21 prostaglandins), and as regulators of gene expression.

22 **12.3 Pharmacokinetics**

23 The infused lipid particles provided by KABIVEN[®] are expected to be cleared from the blood stream
24 in a manner thought to be comparable to the clearing of chylomicrons. In healthy volunteers, the
25 maximum clearance rate of the triglycerides after fasting overnight has been found to be 3.8 ± 1.5
26 g/kg per 24 hours. Both elimination and oxidation rates are dependent on the patient's clinical
27 condition; elimination is faster and utilization is increased in postoperative patients, in sepsis, burns
28 and trauma, while patients with renal impairment and hypertriglyceridemia may show lower

1 utilization of exogenous lipid emulsions. Due to differences in elimination, patients with these
2 conditions should be closely monitored during KABIVEN[®] administration [*see Warnings and*
3 *Precautions (5.3, 5.11)*].

4 The disposition of infused amino acids, dextrose and electrolytes are essentially the same as those
5 supplied by ordinary food.

6 A clinical study in healthy volunteers employing high intravenous doses (80 mmol) of either sodium
7 glycerophosphate used in KABIVEN[®] or reference, inorganic sodium phosphate demonstrated that
8 both compounds resulted in comparable serum inorganic phosphate concentrations after a single
9 intravenous dose. Changes from baseline in the serum levels of sodium, potassium, and total
10 calcium were comparable across the two phosphate sources in this study.

11 **13 NONCLINICAL TOXICOLOGY**

12 **13.1 Carcinogenesis, Mutagenesis, Impairment of Fertility**

13 Long-term animal studies have not been conducted to evaluate carcinogenic potential of KABIVEN[®]
14 or its effect on fertility. Genotoxicity studies have not been conducted with KABIVEN[®] to assess its
15 mutagenic potential.

16 **15 REFERENCES**

- 17 1. Ayers P. et al. A.S.P.E.N. Parenteral Nutrition Handbook, 2nd ed. 2014 pg. 123.
- 18 2. Mueller CM ed. The A.S.P.E.N. Nutrition Support Core Curriculum 2nd ed. 2012. Chapter 29
- 19 Wolk R, Foulks C. Renal Disease., pg. 500

20 **16 HOW SUPPLIED/STORAGE AND HANDLING**

21 KABIVEN[®] is a sterile emulsion available in the following 4 sizes:

22 <u>NDC</u>	<u>Volume</u>
23 63323-712-25	2566 mL
24 63323-712-20	2053 mL
25 63323-712-15	1540 mL
26 63323-712-10	1026 mL

27 Exposure of pharmaceutical products to heat should be minimized. Avoid excessive heat. Protect
28 from freezing. If accidentally frozen, discard the bag. It is recommended that the product be stored
29 at 20° to 25°C (68° to 77°F) [*see USP Controlled Room Temperature*].

30 Do not remove container from overpouch until intended for use.

1 After breaking the vertical seals, chemical and physical in-use stability of the mixed three chamber
2 bag has been demonstrated for 24 hours at 25°C (77°F).

3 The product should be used immediately after mixing and the introduction of additives. If not used
4 immediately, the storage time and conditions prior to use should not be longer than 24 hours at 2° to
5 8°C (36° to 46°F). After removal from storage at 2° to 8°C (36° to 46°F), the admixture should be
6 infused within 24 hours. Any mixture remaining must be discarded.

7 **17 PATIENT COUNSELING INFORMATION**

8 To ensure the safe and effective use of KABIVEN[®], this information should be discussed with the
9 patient.

10 **Inform patients of the following:**

- 11 • KABIVEN[®] is given by infusion through a central vein catheter only.
- 12 • Allergic reactions to KABIVEN[®] may occur.
- 13 • There is a risk of infection and sepsis associated with formulations administered
14 intravenously.
- 15 • KABIVEN[®] may cause adverse reactions such as nausea and vomiting, excess fat (lipids) in
16 the blood, high blood sugar, abnormally increased transaminase and bilirubin, or abnormally
17 high or low blood electrolyte levels.
- 18 • Contact their healthcare provider if they develop symptoms of an allergic reaction, infection,
19 high blood sugar, low blood sugar, nausea, vomiting, or fluid retention occurs.
- 20 • Have periodic laboratory tests and routinely follow-up with their healthcare provider.
- 21 • Inform their healthcare provider about any changes in prescription or over the counter
22 medications and supplements to avoid potential drug interactions and side effects.

23 **When patients self-administer KABIVEN[®] injection at home, inform patients of the following:**

- 24 • Patients and/or caregiver must be trained in how to inspect, activate and administer
25 KABIVEN[®].
- 26 • Follow the KABIVEN[®] inspection, activation and administration instructions provided by
27 their home care provider, and Prescribing Information [*see Dosing and Administration (2.1,*
28 *2.2 and 2.3)*].
- 29 • Do not deviate from the administration instructions given by the health care provider
- 30 • Inspect KABIVEN[®] before using for evidence of damage, particulate matter, and/or
31 discoloration.

32

- 1 • Discard the bag in the following situations:
 - 2 ○ Evidence of damage to the bag
 - 3 ○ More than one chamber is white
 - 4 ○ Solution is yellow
 - 5 ○ Any seal is already broken
- 6 • Prior to activation, store KABIVEN[®] between 20° to 25°C (68° to 77°F).
- 7 • Activate bag just prior to use or refrigerate activated bag at 2 to 8°C (36 to 46°F) for up to 24
- 8 hours. Discard any unused portion.
- 9 • After activation and prior to administration carefully inspect bag for separation of the lipid
- 10 emulsion, which can be visibly identified by a yellowish streaking or the accumulation of
- 11 yellowish droplets in the mixed emulsion. Discard the bag if this occurs.

12 Additional information is available at www.KabivenUSA.com.

13 The brand names mentioned in this document are the trademarks of their respective owners.

14
15 Manufactured by:



16 Uppsala, Sweden
17
18 451206

20 Issued: August 2014

HIGHLIGHTS OF PRESCRIBING INFORMATION

These highlights do not include all the information needed to use PERIKABIVEN® safely and effectively. See full prescribing information for PERIKABIVEN®.

PERIKABIVEN® (amino acids, electrolytes, dextrose and lipid injectable emulsion), for intravenous use
Initial U.S. Approval: TBD

WARNING: DEATH IN PRETERM INFANTS

See full prescribing information for complete boxed warning

- Deaths in preterm infants have been reported in literature. (5.1, 8.4)
- Autopsy findings included intravascular fat accumulation in the lungs. (5.1, 8.4)
- Preterm and low birth weight infants have poor clearance of intravenous lipid emulsion and increased free fatty acid plasma levels following lipid emulsion infusion. (5.1, 8.4)

INDICATIONS AND USAGE

PERIKABIVEN® is indicated as a source of calories, protein, electrolytes and essential fatty acids for adult patients requiring parenteral nutrition when oral or enteral nutrition is not possible, insufficient, or contraindicated. PERIKABIVEN® may be used to prevent essential fatty acid deficiency or treat negative nitrogen balance in adult patients. (1)

Limitations of Use:

Not recommended for use in pediatric patients <2 years, including preterm infants because the fixed content of the formulation does not meet nutritional requirements in this age group. (1, 5.1, 8.4)

DOSAGE AND ADMINISTRATION

- For intravenous infusion into a peripheral or central vein (2.1, 5.8).
- Recommended dose depends on clinical status, body weight and nutritional requirements. (2.4)
- Adult dosage: 27 to 40 mL/kg/day (0.64 to 0.94g/kg/day of protein, 1.83 to 2.71 g/kg/day of dextrose, 0.95 to 1.4 g/kg/day of lipid) (2.4)
- The maximum infusion rate is 3.7 mL/kg/hour (corresponding to 0.09 g/kg/hour of amino acids, 0.25 g/kg/hour of dextrose, the limiting factor, 0.13 g/kg/hour lipid). The recommended infusion period is 12 to 24 hours. (2.4)

FULL PRESCRIBING INFORMATION: CONTENTS*

WARNING: DEATH IN PRETERM INFANTS

- 1 INDICATIONS AND USAGE**
- 2 DOSAGE AND ADMINISTRATION**
 - 2.1 Administration
 - 2.2 Important Preparation Instructions
 - 2.3 Instructions for Use
 - 2.4 Dosing Considerations
- 3 DOSAGE FORMS AND STRENGTHS**
- 4 CONTRAINDICATIONS**
- 5 WARNINGS AND PRECAUTIONS**
 - 5.1 Death in Preterm Infants
 - 5.2 Hypersensitivity Reactions
 - 5.3 Infections
 - 5.4 Fat Overload Syndrome
 - 5.5 Refeeding Syndrome
 - 5.6 Diabetes/Hyperglycemia
 - 5.7 Monitoring/Laboratory Tests
 - 5.8 Thrombophlebitis
 - 5.9 Precipitation with Ceftriaxone
 - 5.10 Hepatobiliary Disorders
 - 5.11 Electrolyte and Fluid Imbalance in Renal Impairment
 - 5.12 Hypertriglyceridemia
 - 5.13 Aluminum Toxicity
 - 5.14 Interference with Laboratory Tests
 - 5.15 Risk of Parenteral Nutrition Associated Liver Disease
- 6 ADVERSE REACTIONS**
 - 6.1 Clinical Trial Experience
 - 6.2 Post-Marketing Experience

DOSAGE FORMS AND STRENGTHS

- PERIKABIVEN® is a sterile, hypertonic emulsion in a three chamber container. The individual chambers contain one of the following respectively: amino acids and electrolytes, dextrose, or lipid injectable emulsion. (3)
- PERIKABIVEN® is available in three sizes 2,400 mL, 1,920 mL, and 1,440. (3)

CONTRAINDICATIONS

- Known hypersensitivity to egg, soybean proteins, peanut proteins, corn or corn products, or to any of the active substances or excipients (4)
- Severe hyperlipidemia or severe disorders of lipid metabolism with serum triglycerides >1,000 mg/dL (4, 5.12)
- Inborn errors of amino acid metabolism (4)
- Cardiopulmonary instability (4)
- Hemophagocytic syndrome (4)

WARNINGS AND PRECAUTIONS

- **Hypersensitivity reactions:** Monitor for signs or symptoms and discontinue infusion if reactions occur. (5.2)
- **Infection, fat overload, hyperglycemia and refeeding complications:** Monitor for signs and symptoms; monitor laboratory parameters. (5.3, 5.4, 5.5, 5.6, 5.7)

ADVERSE REACTIONS

The most common adverse reactions (≥3%) are hyperglycemia, hypokalemia, pyrexia, and increased blood triglycerides. (6.1)

To report SUSPECTED ADVERSE REACTIONS, contact Fresenius Kabi USA, LLC, Vigilance & Medical Affairs at 1-800-551-7176 or FDA at 1-800-FDA-1088 or www.fda.gov/medwatch.

DRUG INTERACTIONS

Coumarin and coumarin derivatives, including warfarin: Anticoagulant activity may be counteracted; monitor laboratory parameters. (7.1)

USE IN SPECIFIC POPULATIONS

Renal Impairment: Patients on dialysis or continuous renal replacement therapy may require additional protein supplementation to meet nutritional requirements. If required, adjust the volume of PERIKABIVEN® administered based on serum electrolyte levels and fluid balance. (2.4, 8.7)

See 17 for PATIENT COUNSELING INFORMATION.

Revised: August 2014

7 DRUG INTERACTIONS

7.1 Coumarin and Coumarin Derivatives

8 USE IN SPECIFIC POPULATIONS

- 8.1 Pregnancy
- 8.3 Nursing Mothers
- 8.4 Pediatric Use
- 8.5 Geriatric Use
- 8.6 Hepatic Impairment
- 8.7 Renal Impairment

10 OVERDOSAGE

11 DESCRIPTION

12 CLINICAL PHARMACOLOGY

- 12.1 Mechanism of Action
- 12.3 Pharmacokinetics

13 NONCLINICAL TOXICOLOGY

- 13.1 Carcinogenesis, Mutagenesis, Impairment of Fertility

15 REFERENCES

16 HOW SUPPLIED/STORAGE AND HANDLING

17 PATIENT COUNSELING INFORMATION

*Sections or subsections omitted from the full prescribing information are not listed.

1 **FULL PRESCRIBING INFORMATION**

2 **WARNING: DEATH IN PRETERM INFANTS**

- 3
- 4 • **Deaths in preterm infants after infusion of intravenous lipid emulsions have been reported in the medical literature.**
 - 5
 - 6 • **Autopsy findings included intravascular fat accumulation in the lungs.**
 - 7
 - 8 • **Preterm infants and low birth weight infants have poor clearance of intravenous lipid emulsion and increased free fatty acid plasma levels following lipid emulsion infusion.**
 - 9

10 *[See Warnings and Precautions (5.1) and Use in Specific Populations (8.4)]*

11

12

13

14 **1 INDICATIONS AND USAGE**

15 PERIKABIVEN® is indicated is indicated as a source of calories, protein, electrolytes and essential
16 fatty acids for adult patients requiring parenteral nutrition when oral or enteral nutrition is not
17 possible, insufficient, or contraindicated. PERIKABIVEN® may be used to prevent essential fatty
18 acid deficiency or treat negative nitrogen balance in adult patients.

19 Limitations of Use:

20 PERIKABIVEN® is not recommended for use in pediatric patients under the age of 2 years,
21 including preterm infants because the fixed content of the formulation does not meet the nutritional
22 requirements of this age group *[see Warnings and Precautions (5.1) and Use in Specific Populations*
23 *(8.4)]*.

24 **2 DOSAGE AND ADMINISTRATION**

25 **2.1 Administration**

- 26 • PERIKABIVEN® is for intravenous infusion into a peripheral or central vein *[see Warnings and*
27 *Precautions (5.8)]*.
- 28 • Use a 1.2 micron in-line filter.
- 29 • Use of a vented intravenous administration set with the vent in the open position could result in
30 air embolism.
- 31 • Use a dedicated line without any connections. Multiple connections could result in air embolism
32 due to residual air being drawn from the primary container before administration of the fluid
33 from the secondary container is completed.
- 34 • Ceftriaxone must not be administered simultaneously with calcium-containing intravenous
35 solutions such as PERIKABIVEN® via a Y-site due to precipitation. However, ceftriaxone and

1 PERIKABIVEN® may be administered sequentially if the infusion lines are thoroughly flushed
2 between infusions with a compatible fluid [*see Warnings and Precautions (5.9)*].

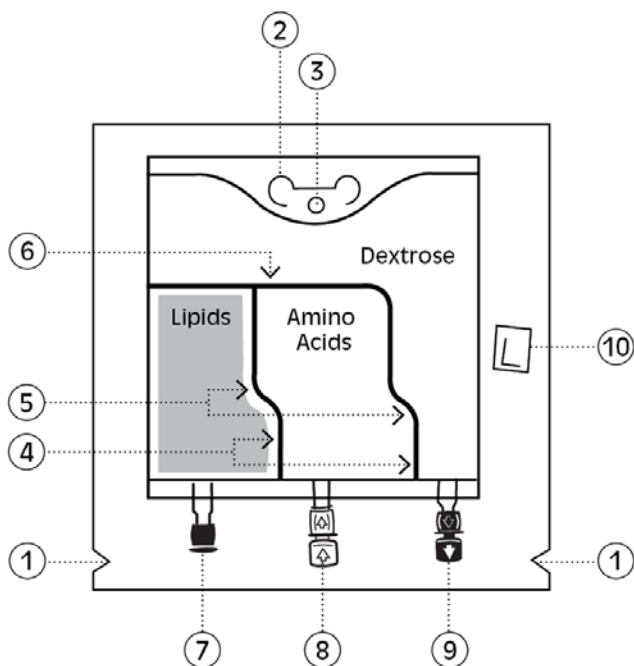
- 3 • Do not use administration sets and lines that contain di-2-ethylhexyl phthalate (DEHP).
4 Administration sets that contain polyvinyl chloride (PVC) components have DEHP as a
5 plasticizer.

6 **2.2 Important Preparation Instructions**

- 7 • Inspect the bag prior to activation. Discard the bag in the following situations:
 - 8 ○ Evidence of damage to the bag
 - 9 ○ More than one chamber is white
 - 10 ○ Solution is yellow
 - 11 ○ Any seal is already broken
- 12 • Activate the bag [*see Dosage and Administration (2.3)*].
- 13 • Once the bag is activated, ensure the vertical seals between chambers are broken at least from
14 the bend in the seals and down to the ports. The upper sections of the vertical seals above the
15 bend and the horizontal seal may remain closed.
- 16 • It is recommended to mix the contents thoroughly by inverting the bag upside down to ensure a
17 homogenous admixture.
- 18 • Ensure the vertical seals between chambers are broken and the contents of all three chambers are
19 mixed together prior to infusion [*see Dosage and Administration (2.3)*]
- 20 • For total parenteral nutrition add multivitamins and trace elements via the additive port. Any
21 other additions to the bag should be evaluated by a pharmacist for compatibility. Questions about
22 compatibility may be directed to Fresenius Kabi USA, LLC Vigilance and Medical Affairs.
- 23 • When introducing additives, it is recommended to use 18 to 23 gauge needles with a maximum
24 length of 1.5 inches (40 mm) and to mix thoroughly after each addition, use aseptic technique
25 and add after the vertical seals have been broken (i.e. bag has been activated) and the three
26 components are mixed [*see Dosage and Administration (2.3)*].
- 27 • Parenteral drug products should be inspected visually for particulate matter and discoloration
28 prior to administration, whenever solution and container permit. Inspect PERIKABIVEN® to
29 ensure:
 - 30 ○ Precipitates have not formed during the mixing or addition of additives.
 - 31 ○ The emulsion has not separated. Separation of the emulsion can be visibly identified by a
32 yellowish streaking or the accumulation of yellowish droplets in the mixed emulsion.
- 33 Discard the admixture if any of the above are observed.

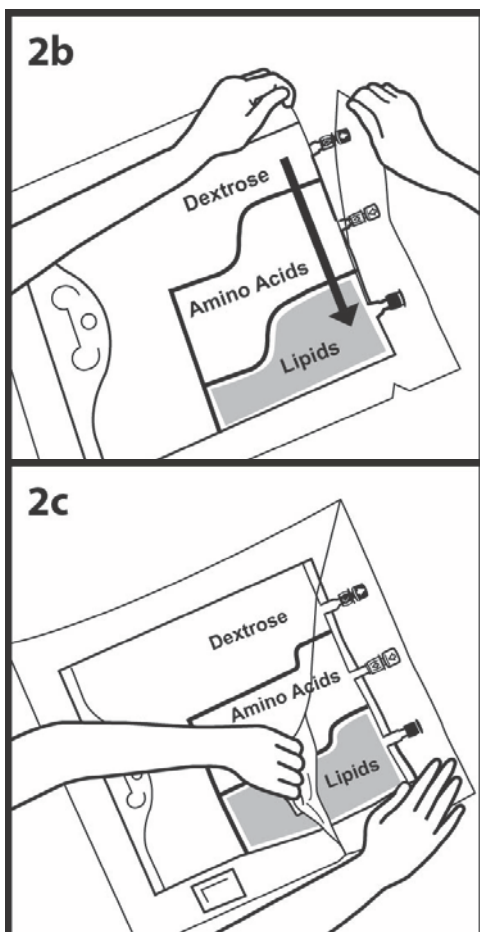
- 1
 - 2
 - 3
 - 4
 - 5
- PERIKABIVEN[®] should be used immediately after mixing and the introduction of additives. If not used immediately, the storage time and conditions prior to use should not be longer than 24 hours at 2° to 8°C (36° to 46°F). After removal from storage at 2° to 8°C (36° to 46°F), the admixture should be infused within 24 hours. Any mixture remaining must be discarded.

2.3 Instructions for Use



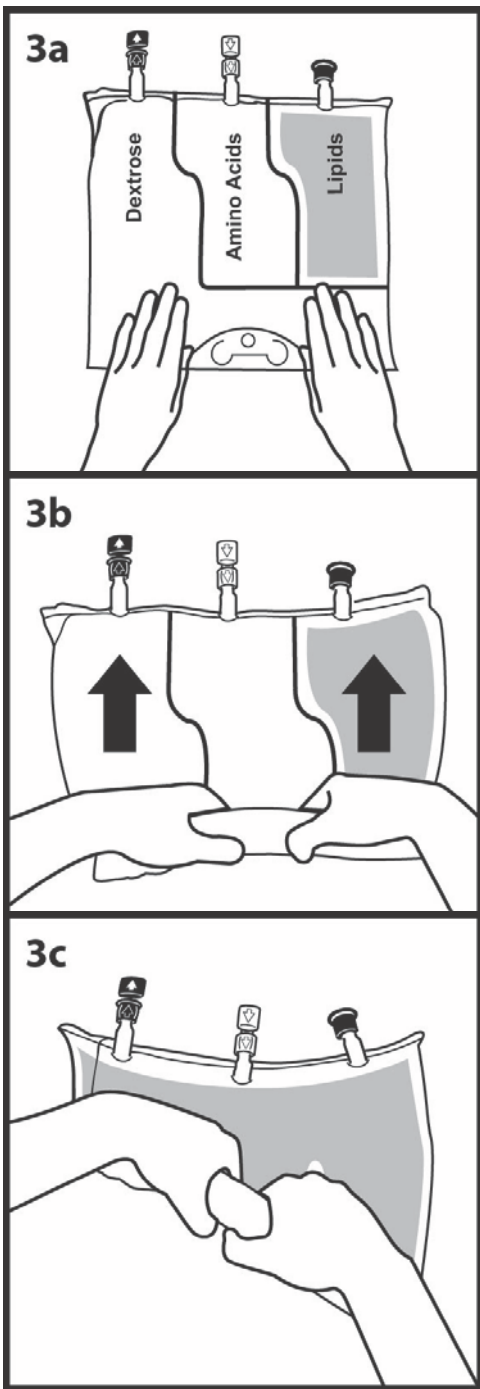
1. **Overpouch Notch**
2. **Handle**
3. **Hole** (For hanging the bag)
4. **Vertical Seals** (Must break to activate)
5. **Bends in Vertical Seals**
6. **Horizontal Seal** (May remain unopened)
7. **Blind Port** (NEVER use this port)
8. **WHITE Additive Port**
9. **BLUE Infusion Port**
10. **Oxygen Absorber** (Present between bag and inside overpouch-position may vary)

An instructional video is available at www.KabivenUSA.com.



1. **INSPECT BAG PRIOR TO ACTIVATION.**
 - PERIKABIVEN® is a 3 chambered bag:
 - One chamber is **WHITE**.
 - Two chambers are **CLEAR**.
 - a) Discard bag if:
 - Overpouch is **OPENED OR DAMAGED**.
 - More than one chamber is **WHITE**.
 - Solution is **YELLOW**.
 - Seals are already **BROKEN**.
2. **REMOVE OVERPOUCH.**
 - a) Place bag on a clean, flat surface.
 - b) Tear from Overpouch Notch, located close to the ports.
 - c) Tear long sides open to access the inner bag.
 - d) Discard Overpouch and Oxygen Absorber.

1
2
3
4
5
6
7
8
9
10
11
12
13
14
15
16
17
18
19
20
21
22
23
24
25
26
27
28
29



3. ACTIVATE BAG.

- Place bag on a clean, flat surface with text side up and ports pointing away from you.
- Roll **tightly** from top of bag down toward ports.
- Apply pressure** until both Vertical Seals break and entire contents are white. It may take up to 5 seconds of continued pressure to break Vertical Seals.

NOTE: Both Vertical Seals must be broken from bends to ports. Upper section of Vertical Seals and Horizontal Seal may remain unbroken.

- After both Vertical Seals are broken, mix contents thoroughly by inverting the bag at least three times to ensure a homogenous mixture.

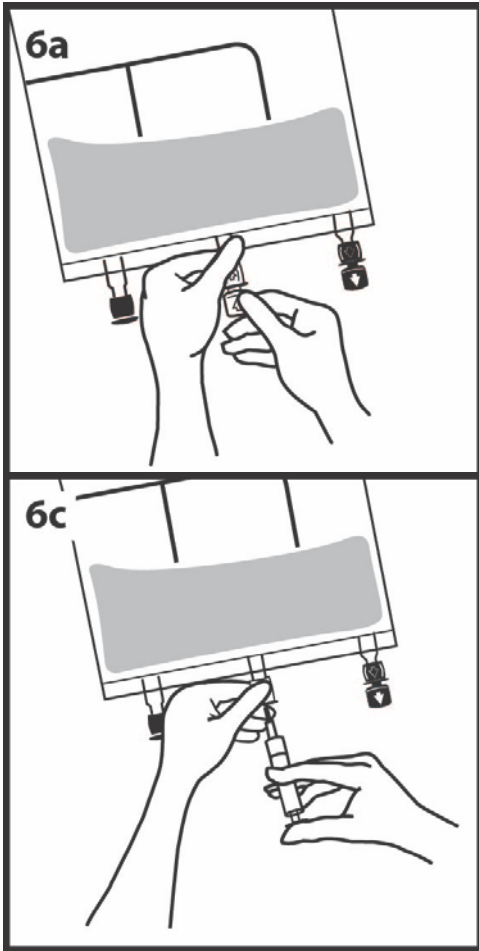
4. INSPECT BAG TO CONFIRM ACTIVATION.

- An activated bag has both Vertical Seals broken from bends to ports and entire contents are white.

5. IDENTIFY CORRECT PORT.

- Additive port is **WHITE** with arrow pointing toward bag.
- Infusion port is **BLUE** with arrow pointing away from bag.

1
2
3
4
5
6
7
8
9
10
11
12
13
14
15
16
17
18
19
20
21
22
23
24
25
26
27



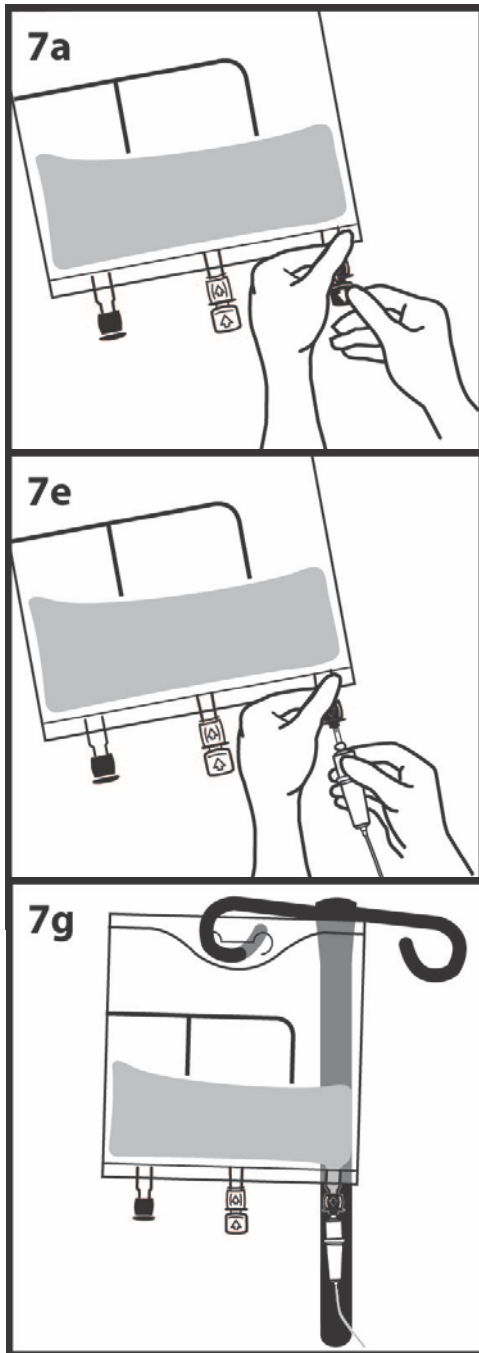
6. MAKE ADDITIONS (if prescribed).

WARNING: Ensure additives are compatible.

- a) Immediately before injecting additives, break off **WHITE** Additive Port cap with the arrow pointing toward the bag.
- b) Hold base of Additive Port horizontally.
- c) Insert needle horizontally through the center of Additive Port's septum and inject additives.
- d) Repeat as necessary using aseptic technique.
- e) Mix thoroughly after each addition.

NOTE: The membrane of Additive Port is sterile at first use. Use aseptic technique for subsequent additions. The septum can be pierced up to 10 times with the recommended needle size 18 to 23 G 1½ inches (40mm).

1
2
3
4
5
6
7
8
9
10
11
12
13
14
15
16
17
18
19
20
21
22



7. SPIKE AND HANG BAG.

- a) Immediately before inserting the infusion set, break off **BLUE** Infusion Port cap with the arrow pointing away from the bag.
- b) Use a non-vented infusion set or close the air-inlet on a vented set. It is recommended to use 1.2 μ m in-line filter.
- c) Close the roller clamp of the infusion set.
- d) Hold the base of Infusion Port.
- e) Insert spike through Infusion Port by rotating your wrist slightly until the spike is inserted.
- f) Lift and hold the bag with both hands.
- g) Hang the bag by Hole below Handle.

NOTE: The membrane of Infusion Port is sterile at first use. Use infusion sets (according to ISO Number 8536-4) with an external spike diameter of 5.5 to 5.7 mm.

8. FOR SINGLE USE ONLY.

- Discard unused portion.

2.4 Dosing Considerations

The dosage of PERIKABIVEN® should be individualized based on the patient’s clinical condition (ability to adequately metabolize protein, dextrose and lipids), body weight and nutritional/fluid requirements, as well as additional energy given orally/enterally to the patient.

PERIKABIVEN® is a combination of amino acids, electrolytes, dextrose, and lipid in a fixed volume and concentration. The dosage selection is based upon fluid requirements which can be used in conjunction with the nutritional requirements to determine final dosage [see Table 1].

PERIKABIVEN® meets the total nutritional requirements for protein, dextrose and lipids in stable patients, and can be individualized to meet specific needs with the addition of nutrients. The maximum infusion rate is based upon the dextrose component.

Prior to administration of PERIKABIVEN®, correct severe fluid, electrolyte and acid-base disorders. Before starting the infusion, obtain serum triglyceride levels to establish the baseline value.

Recommended Adult Dosage

The recommended dosage of PERIKABIVEN® in adults is 27 to 40 mL/kg/day. The recommended daily nutritional requirements for protein, dextrose and lipids compared to the amount of nutrition provided by PERIKABIVEN® are shown in Table 1.

The maximum daily dose of PERIKABIVEN® in adults should not exceed 40 mL/kg/day.

In patients with serum triglyceride concentrations above 400 mg/dL, stop the PERIKABIVEN® infusion and monitor serum triglyceride levels. Once the triglycerides are <400 mg/dL, restart PERIKABIVEN® at a lower infusion rate and advance rate in smaller increments, towards target dose, checking the triglyceride levels prior to each adjustment [see *Contraindications (4) and Warnings and Precautions (5.12)*].

Table 1: Nutritional Comparison

	Nutrition Provided by PERIKABIVEN® recommended dose	Recommended Nutritional Requirements ¹	
		Stable Patients	Critically Ill Patients*
Fluid mL/kg/day	27 to 40	30 to 40	Minimum needed to deliver adequate macronutrients
Protein** g/kg/day	0.64 to 0.94	0.8 to 1.0	1.5 to 2
Nitrogen g/kg/day	0.1 to 0.15	0.13 to 0.16	0.24 to 0.3
Dextrose g/kg/day	1.8 to 2.7	≤10	≤5.8
Lipids g/kg/day	0.95 to 1.4	1	≤1
Total Energy Requirement kcal/kg/day	18 to 27	20 to 30	25 to 30

1 * Do not use in patients with conditions that are contraindicated [*see Contraindications (4)*].

2 ** Protein is provided as amino acids. When infused intravenously amino acids are metabolized and
3 utilized as the building blocks of protein.

4 Treatment with PERIKABIVEN® may be continued for as long as is required by the patient's
5 condition.

6 **Dosing in Renal Impairment**

7 In patients with renal impairment, the dosage of PERIKABIVEN® should be the recommended adult
8 dose (see above). Prior to administration, correct severe fluid or electrolyte imbalances. Closely
9 monitor serum electrolyte levels and adjust the volume of PERIKABIVEN® administered as required
10 [*see Warnings and Precautions (5.11)*].

11 Renal patients not needing dialysis require 0.6 to 0.8 g of protein/kg/day. Patients on dialysis or
12 continuous renal replacement therapy should receive 1.2 to 1.8 g of protein/kg/day up to a maximum
13 of 2.5 g of protein/kg/day based on nutritional status and estimated protein losses². The
14 PERIKABIVEN® dosage can be adjusted based on the treatment for the renal impairment,
15 supplementing protein indicated. Additional protein may be added to PERIKABIVEN® bag or
16 infused separately. If required, additional amino acids may be added to the PERIKABIVEN® bag or
17 infused separately. Compatibility of additions should be evaluated by a pharmacist and questions
18 may be directed to Fresenius Kabi USA, LLC Vigilance and Medical Affairs.

19 **Infusion Duration and Rate**

20 The recommended duration of infusion for PERIKABIVEN® is between 12 and 24 hours, depending
21 on the clinical situation.

22 The maximum infusion rate of PERIKABIVEN® is 3.7 mL/kg/hour. This corresponds to 0.09
23 g/kg/hour of amino acids, 0.25 g/kg/hour of dextrose (the rate limiting factor), and 0.13 g/kg/hour of
24 lipid.

25 **Dosing Instructions**

- 26 1. Determine the fluid requirements (27 to 40 mL/kg/day) to be delivered, then select the
27 corresponding PERIKABIVEN® bag.
- 28 2. Determine the preferred duration of infusion (12 to 24 hours).
- 29 3. Ensure that the rate of infusion (PERIKABIVEN® dosage in mL/kg/day divided by the preferred
30 duration of infusion (hours) does not exceed the maximum infusion rate for the patient (i.e., 3.7
31 mL/kg/hour). The infusion rate may need to be reduced and duration of infusion increased in
32 order not to exceed the maximum infusion rate.

4. Once the infusion rate in mL/kg/hour has selected, calculate the infusion rate (mL/hour) using the patient's weight.
5. Compare the patient's nutrient requirements with the amount supplied by PERIKABIVEN®. Discuss with a pharmacist any additions that may be required.

3 DOSAGE FORMS AND STRENGTHS

PERIKABIVEN® is a sterile, hypertonic emulsion in a three chamber container. The individual chambers contain one of the following respectively: amino acid and electrolytes, dextrose, and lipid injectable emulsion. Table 2 describes the individual components of PERIKABIVEN®.

Table 2: Contents of PERIKABIVEN® when mixed

How Supplied	1,440 mL	1,920 mL	2,400 mL
Composition of PERIKABIVEN®			
Soybean Oil, USP (g/100 mL)			3.5
Dextrose Anhydrous, USP (g/100 mL)			6.8
Amino Acids, USP (g/100 mL)			2.36
Total Nitrogen (mg/100 mL)			375
Essential amino acids (mg/100 mL)	Lysine, USP (added as the hydrochloride salt)		187
	Phenylalanine, USP		164
	Leucine, USP		164
	Valine, USP		152
	Threonine, USP		116
	Methionine, USP		116
	Isoleucine, USP		116
	Tryptophan, USP		40
Nonessential amino acids (mg/100 mL)	Alanine, USP		333
	Arginine, USP		235
	Glycine, USP		164
	Proline, USP		141
	Histidine, USP		141
	Glutamic Acid		116
	Serine, USP		94
	Aspartic Acid, USP		71
	Tyrosine, USP		4.8
Electrolytes (mg/100 mL)	Sodium Acetate Trihydrate, USP		170
	Potassium Chloride, USP		124
	Sodium Glycerophosphate Anhydrous		105
	Magnesium Sulfate Heptahydrate, USP		68
	Calcium Chloride Dihydrate, USP		20

Electrolyte Profile ¹ (mEq/L)	Sodium ²	22 (22 mmol/L)
	Potassium	17 (17 mmol/L)
	Magnesium	5.6 (2.8 mmol/L)
	Calcium	2.8 (1.4 mmol/L)
	Phosphorous ³	N.A. (7.5 mmol/L)
	Acetate ⁴	27 (27 mmol/L)
	Chloride ⁵	32 (32 mmol/L)
	Sulfate ⁶	5.6 (2.8 mmol/L)
Calorie Content (kcal/L)	From Dextrose	230
	From Lipid	350 ⁷
	From Amino Acids	95
	Total	675
pH ⁸		5.6
Osmolarity (mOsm/L)		750

1. Balanced by ions from amino acids
2. Contributed by sodium glycerophosphate and sodium acetate
3. Contributed by sodium glycerophosphate and phospholipids
4. Derived from sodium acetate and glacial acetic acid (for pH adjustment)
5. Contributed by calcium chloride, lysine hydrochloride, and potassium chloride
6. Derived from magnesium sulfate
7. Total caloric value including lipid, phospholipid and glycerin
8. pH of amino acid with electrolyte solution was adjusted with glacial acetic acid, USP and pH of lipid emulsion was adjusted with sodium hydroxide, USP

4 CONTRAINDICATIONS

The use of PERIKABIVEN[®] is contraindicated in patients with the following:

- Known hypersensitivity to egg, soybean proteins, peanut proteins, corn or corn products or to any of the active substances or excipients
- Severe hyperlipidemia or severe disorders of lipid metabolism characterized by hypertriglyceridemia (serum triglyceride concentration >1,000 g/dL) [*see Warnings and Precautions (5.12)*]
- Inborn error of amino acid metabolism
- Cardiopulmonary instability (including pulmonary edema, cardiac insufficiency, myocardial infarction, acidosis and hemodynamic instability requiring significant vasopressor support)
- Hemophagocytic syndrome

1 **5 WARNINGS AND PRECAUTIONS**

2 **5.1 Death in Preterm Infants**

3 Deaths in preterm infants after infusion of intravenous lipid emulsions have been reported. Autopsy
4 findings included intravascular lipid accumulation in the lungs.

5 Preterm and small for gestational age infants have poor clearance of intravenous lipid
6 emulsion and increased free fatty acid plasma levels following lipid emulsion infusion.

7 The safe and effective use of PERIKABIVEN[®] injection in pediatric patients, including preterm
8 infants, has not been established. PERIKABIVEN[®] is not recommended for use in pediatric patients
9 under the age of 2 years including preterm infants.

10 **5.2 Hypersensitivity Reactions**

11 Stop infusion immediately and treat patient accordingly if signs or symptoms of a hypersensitivity or
12 allergic reaction develop. Signs or symptoms may include: tachypnea, dyspnea, hypoxia,
13 bronchospasm, tachycardia, hypotension, cyanosis, vomiting, nausea, headache, sweating, dizziness,
14 altered mentation, flushing, rash, urticaria, erythema, pyrexia and chills.

15 **5.3 Infections**

16 Patients who require parenteral nutrition are at high risk of infections due to malnutrition
17 and their underlying disease state.

18 Infection and sepsis may occur as a result of the use of intravenous catheters to administer
19 parenteral nutrition, poor maintenance of catheters, or immunosuppressive effects of illness,
20 drugs, and parenteral formulations.

21 Decrease the risk of septic complications with heightened emphasis on aseptic technique in
22 catheter placement and maintenance, as well as aseptic technique in the preparation of the
23 nutritional formula.

24 Monitor for signs and symptoms (including fever and chills) of early infections, including laboratory
25 test results (including leukocytosis and hyperglycemia) and frequent checks of the parenteral access
26 device.

27 **5.4 Fat Overload Syndrome**

28 Fat overload syndrome is a rare condition that has been reported with intravenous lipid formulations.
29 A reduced or limited ability to metabolize the lipid contained in PERIKABIVEN[®] accompanied by
30 prolonged plasma clearance may result in a syndrome characterized by a sudden deterioration in the
31 patient's condition accompanied by fever, anemia, leukopenia, thrombocytopenia, coagulation
32 disorders, hyperlipidemia, liver fatty infiltration (hepatomegaly), deteriorating liver function, and

1 central nervous system manifestations (e.g., coma). The cause of the fat overload syndrome is
2 unclear. The syndrome is usually reversible when the infusion of the lipid emulsion is stopped.
3 Although it has been most frequently observed when the recommended lipid dosage was exceeded,
4 cases have also been described where the lipid formulation was administered according to
5 instructions.

6 **5.5 Refeeding Syndrome**

7 Refeeding severely undernourished patients with parenteral nutrition may result in the refeeding
8 syndrome, characterized by the intracellular shift of potassium, phosphorus, and magnesium as the
9 patient becomes anabolic. Thiamine deficiency and fluid retention may also develop. Carefully
10 monitor severely undernourished patients and slowly increase their nutrient intakes, while avoiding
11 overfeeding, to prevent these complications.

12 **5.6 Diabetes/Hyperglycemia**

13 PERIKABIVEN® should be used with caution in patients with diabetes mellitus or hyperglycemia.
14 With the administration of PERIKABIVEN® hyperglycemia and hyperosmolar syndrome may result.
15 Administration of dextrose at a rate exceeding the patient's utilization rate may lead to
16 hyperglycemia, coma and death. Monitor blood glucose levels and treat hyperglycemia to maintain
17 optimum levels while infusing PERIKABIVEN®. Insulin may be administered or adjusted to
18 maintain optimal blood glucose levels during PERIKABIVEN® administration.

19 **5.7 Monitoring/Laboratory Tests**

20 Routine Monitoring:

- 21 • Frequent clinical evaluation and laboratory determinations are necessary for proper monitoring
22 during administration.
- 23 • Monitor fluid status closely in patients with heart failure or pulmonary edema.
- 24 • Monitor serum triglycerides, fluid and electrolyte status, serum osmolarity, blood glucose, liver
25 and kidney function, and blood count, including platelet and coagulation parameters, throughout
26 treatment. In situations of severely elevated electrolyte levels stop PERIKABIVEN® until levels
27 have been corrected.

28 Essential Fatty Acids

29 Monitoring patients for signs and symptoms of essential fatty acid deficiency (EFAD) is
30 recommended. Laboratory tests are available to determine serum fatty acids levels. Reference values
31 should be consulted to help determine adequacy of essential fatty acid status. Increasing essential
32 fatty acid intake (enterally or parenterally) is effective in treating and preventing EFAD.

1 In PERIKABIVEN[®], the mean composition of linoleic acid (an omega-6 essential fatty acid) is 19
2 mg/mL (range 17 to 20 mg/mL) and alpha-linolenic acid (an omega-3 essential fatty acid) is 2.3
3 mg/mL (range 1.8 to 3.8 mg/mL). There are insufficient long-term data to determine whether
4 PERIKABIVEN[®] can supply essential fatty acids in adequate amounts in patients who may have
5 increased requirements.

6 **5.8 Thrombophlebitis**

7 PERIKABIVEN[®] is indicated for peripheral administration, or may be infused into a central vein.
8 Peripheral catheters should not be used for solutions with osmolarity of ≥ 900 mOsm/L. The primary
9 complication of peripheral access is venous thrombophlebitis, which manifests as pain, erythema,
10 tenderness or a palpable cord. The catheter should be removed as soon as thrombophlebitis develops.

11 **5.9 Precipitation with Ceftriaxone**

12 Precipitation of ceftriaxone-calcium can occur when ceftriaxone is mixed with calcium-containing
13 parenteral nutrition solutions, such as PERIKABIVEN[®] in the same intravenous administration line.
14 Ceftriaxone must not be administered simultaneously with PERIKABIVEN[®] via a Y-site. However,
15 ceftriaxone and PERIKABIVEN[®] may be administered sequentially if the infusion lines are
16 thoroughly flushed between infusions with a compatible fluid [*see Dosing and Administration (2.1)*].

17 **5.10 Hepatobiliary Disorders**

18 Hepatobiliary disorders are known to develop in some patients without preexisting liver disease who
19 receive parenteral nutrition, including cholecystitis, cholelithiasis, cholestasis, hepatic steatosis,
20 fibrosis and cirrhosis, possibly leading to hepatic failure. The etiology of these disorders is thought to
21 be multifactorial and may differ between patients.

22 Increase of blood ammonia levels and hyperammonemia may occur in patients receiving amino acid
23 solutions. In some patients this may indicate hepatic insufficiency or the presence of an inborn error
24 of amino acid metabolism [*see Contraindications (4)*] or hepatic insufficiency.

25 Monitor liver function parameters and ammonia. Patients developing signs of hepatobiliary
26 disorders should be assessed early by a clinician knowledgeable in liver diseases in order to identify
27 causative and contributory factors, and possible therapeutic and prophylactic interventions.

28 **5.11 Electrolyte Imbalance and Fluid Overload in Renal Impairment**

29 Patients with renal impairment, such as pre-renal azotemia, renal obstruction and protein-losing
30 nephropathy may be at increased risk of electrolyte and fluid volume imbalance.

31 PERIKABIVEN[®] should be used with caution in patients with renal impairment.

32 PERIKABIVEN[®] dosage may require adjustment with specific attention to fluid, protein and
33 electrolyte content in these patients.

1 Monitor renal function parameters. Patients developing signs of renal impairment should be assessed
2 early by a clinician knowledgeable in renal disease in order to determine the appropriate
3 PERIKABIVEN[®] dosage and other treatment options.

4 **5.12 Hypertriglyceridemia**

5 To evaluate the patient's capacity to eliminate and metabolize the infused lipid emulsion, measure
6 serum triglycerides before the start of infusion (baseline value), with each increase in dosage, and
7 regularly throughout treatment.

8 Reduce dose of PERIKABIVEN[®] and monitor serum triglyceride levels in patients with serum
9 triglyceride concentrations above 400 mg/dL to avoid the clinical consequences associated with
10 hypertriglyceridemia. Serum triglyceride levels above 1000 mg/dL have been associated with an
11 increased risk of pancreatitis.

12 Impaired lipid metabolism with hypertriglyceridemia may occur in conditions such as inherited lipid
13 disorders, obesity, diabetes mellitus, and metabolic syndrome. In these cases, increased triglycerides
14 can also be increased by dextrose and/or overfeeding. Monitor overall energy intake and other
15 sources of lipid and dextrose, as well as drugs that may interfere with lipid and dextrose metabolism.

16 **5.13 Aluminum Toxicity**

17 PERIKABIVEN[®] contains no more than 25 mcg/L of aluminum.

18 The aluminum contained in PERIKABIVEN[®] may reach toxic levels with prolonged parenteral
19 administration in patients with impaired kidney function. Preterm infants are at greater risk because
20 their kidneys are immature, and they require large amounts of calcium and phosphate solutions that
21 contain aluminum. Patients with impaired kidney function, including preterm infants, who receive
22 parenteral levels of aluminum at greater than 4 to 5 mcg/kg/day, accumulate aluminum at levels
23 associated with central nervous system and bone toxicity. Tissue loading may occur at even lower
24 rates of administration of total parenteral nutrition products.

25 **5.14 Interference with Laboratory Tests**

26 High levels of lipids in plasma may interfere with some laboratory blood tests such as hemoglobin,
27 triglycerides, bilirubin, LDH, and oxygen saturation, if blood is sampled before lipid has been
28 cleared from the bloodstream. Lipids are normally cleared after a lipid-free interval of 5 to 6 hours in
29 most patients.

30 PERIKABIVEN[®] contains Vitamin K₁ which may interfere with anticoagulant activity [*see Drug*
31 *Interactions (7.1)*].
32

1 **5.15 Risk of Parenteral Nutrition Associated Liver Disease**

2 Parenteral Nutrition Associated Liver Disease (PNALD) has been reported in patients who receive
3 parenteral nutrition for extended periods of time, especially preterm infants, and can present as
4 cholestasis or steatohepatitis. The exact etiology is unknown and is likely multifactorial.
5 Intravenously administered phytosterols (plant sterols) contained in plant-derived lipid formulations
6 have been associated with development of PNALD although a causal relationship has not been
7 established. If PERIKABIVEN[®] treated patients develop liver test abnormalities consider
8 discontinuation or dosage reduction.

9 **6 ADVERSE REACTIONS**

10 The following serious adverse reactions are discussed in greater detail in other sections of the
11 prescribing information.

- 12 • Hypersensitivity reactions [*see Warnings and Precautions (5.2)*]
- 13 • Infections [*see Warnings and Precautions (5.3)*]
- 14 • Fat Overload Syndrome [*see Warnings and Precautions (5.4)*]
- 15 • Refeeding Syndrome [*see Warnings and Precautions (5.5)*]
- 16 • Diabetes/Hyperglycemia [*see Warnings and Precautions (5.6)*]
- 17 • Thrombophlebitis [*see Warnings and Precautions (5.8)*]
- 18 • Hepatobiliary disorders [*see Warnings and Precautions (5.10, 5.15)*]
- 19 • Electrolyte Imbalance and Fluid Overload in renal impairment [*see Warnings and*
20 *Precautions (5.11)*]
- 21 • Hypertriglyceridemia [*see Warnings and Precautions (5.12)*]
- 22 • Aluminum toxicity [*see Warnings and Precautions (5.13)*]

23 **6.1 Clinical Trial Experience**

24 Because clinical trials are conducted under widely varying conditions, adverse reaction rates
25 observed in the clinical trials of a drug cannot be directly compared to rates in the clinical trials of
26 another drug and may not reflect the rates observed in practice.

27 The clinical data described for PERIKABIVEN[®] reflects exposure in 93 patients exposed for 5 to 7
28 days in 4 active-controlled trials. The pooled population exposed to PERIKABIVEN[®] was 18 to 87
29 years old, 48% female, 73% Caucasian. The enrolled patients had varied underlying conditions such
30 as gastrointestinal disorders (55%), vascular disorders (30%), metabolism and nutrition disorders
31 (28%), respiratory, thoracic, and mediastinal disorders (22%), and psychiatric disorders (20%). Most
32 patients received peripheral intravenous infusion doses of $\geq 80\%$ of their target mean daily exposure.

33 Adverse reactions occurring in at least 2% of patients who received PERIKABIVEN[®] are shown in
34 Table 3.

1 **Table 3: Adverse Reactions in >2% of Patients Treated with PERIKABIVEN®**

Adverse reaction	PERIKABIVEN® N=93 (%)
Hyperglycemia*	5 (5)
Hypokalemia	4 (4)
Pyrexia	4 (4)
Blood triglycerides increased	3 (3)
Phlebitis	2 (2)
Nausea	2 (2)
Pruritus	2 (2)
Gamma-glutamyltransferase increased	2 (2)
Blood alkaline phosphatase increased	2 (2)
Alanine aminotransferase increased	2 (2)
Blood glucose increased*	2 (2)
C-reactive protein increased	2 (2)
Blood urea increased	2 (2)
Hypoalbuminemia	2 (2)

2 * Terms as reported in clinical studies

3 Less common adverse reactions in ≤1% of patients who received PERIKABIVEN were
4 hyperkalemia, hypomagnesaemia, hypernatremia, tachycardia, hypertension, thrombophlebitis,
5 vomiting, jaundice, rash and increased blood bilirubin.

6 **6.2 Post-Marketing Experience**

7 The following additional adverse reactions have been identified during post-approval use of
8 PERIKABIVEN® in countries where it is registered. Because these reactions are reported voluntarily
9 post-approval from a population of uncertain size, it is not always possible to reliably estimate their
10 frequency or establish a causal relationship to product exposure.

- 11 • Gastrointestinal disorders: abdominal distension, abdominal pain
- 12 • General disorders and administration site conditions: chest tightness
- 13 • Hepatobiliary disorders: cholestasis
- 14 • Immune system disorders: allergic reaction, anaphylaxis
- 15 • Infections and infestations: infection
- 16 • Vascular disorders: flushed face

17 **7 DRUG INTERACTIONS**

18 **7.1 Coumarin and Coumarin Derivatives**

19 The soybean oil present in PERIKABIVEN® has vitamin K₁. Vitamin K₁ can reverse the
20 anticoagulant activity of coumarin or coumarin derivatives, which work by blocking recycling of

1 vitamin K₁. Monitoring for anticoagulant activity is recommended in patients who are on both
2 PERIKABIVEN[®] and coumarin or coumarin derivatives.

3 **8 USE IN SPECIFIC POPULATIONS**

4 **8.1 Pregnancy**

5 **Pregnancy Category C**

6 *Risk Summary*

7 There are no adequate or well-controlled studies in pregnant women with PERIKABIVEN[®].
8 Additionally, animal reproduction studies have not been conducted with lipid injectable emulsion
9 with amino acids and electrolytes and dextrose. It is not known whether PERIKABIVEN[®] can cause
10 fetal harm when administered to a pregnant woman. PERIKABIVEN[®] should be given to a
11 pregnant woman only if clearly needed.

12 *Clinical Considerations*

13 Based on clinical practice guidelines, parenteral nutrition should be considered in cases of severe
14 maternal malnutrition where nutritional requirements cannot be fulfilled by enteral route because of
15 the risks to the fetus associated with severe malnutrition, such as preterm delivery, low birth weight,
16 intrauterine growth restriction, congenital malformations and perinatal mortality.

17 **8.3 Nursing Mothers**

18 It is not known whether PERIKABIVEN[®] is present in human milk. Because many drugs are
19 present in human milk, caution should be exercised when PERIKABIVEN[®] is administered to a
20 nursing woman.

21 **8.4 Pediatric Use**

22 The safety and effectiveness of PERIKABIVEN[®] in pediatric patients has not been established.
23 Deaths in preterm infants after infusion of intravenous lipid emulsion have been reported [*see*
24 *Warnings and Precautions (5.1)*]. Patients, particularly preterm infants, are at risk for aluminum
25 toxicity [*see Warnings and Precautions (5.13)*].

26 PERIKABIVEN[®] is not recommended for use in pediatric patients under the age of two years,
27 including preterm infants, as the fixed content of the formulation does not meet the nutritional
28 requirements of this age group due to the following reasons:

- 29 • Calcium and dextrose needs are not met and lipids, protein and magnesium exceed requirements.
- 30 • The product does not contain the amino acids cysteine and taurine, considered conditionally
31 essential for neonates and infants.

1 Patients, including pediatric patients, may be at risk for PNALD [*see Warnings and Precautions*
2 (5.15)].

3 Newborns – especially those born premature and with low birth weight – are at increased risk of
4 developing hypo – or hyperglycemia and therefore need close monitoring during treatment with
5 intravenous dextrose solutions to ensure adequate glycemic control in order to avoid potential long
6 term adverse effects. Hypoglycemia in the newborn can cause prolonged seizures, coma and brain
7 damage. Hyperglycemia has been associated with intraventricular hemorrhage, late onset bacterial
8 and fungal infection, retinopathy of prematurity, necrotizing enterocolitis, bronchopulmonary
9 dysplasia, prolonged length of hospital stay, and death.

10 **8.5 Geriatric Use**

11 Clinical studies of PERIKABIVEN[®] did not include sufficient numbers of patients aged 65 and over
12 to determine whether they respond differently from other younger patients. Other reported clinical
13 experience has not identified differences in responses between the elderly and younger patients. In
14 general, dose selection for an elderly patient should be cautious, usually starting at the low end of the
15 dosing range, reflecting the greater frequency of decreased hepatic, renal, or cardiac function, and of
16 concomitant disease or drug therapy.

17 **8.6 Hepatic Impairment**

18 In patients with impaired liver function PERIKABIVEN[®] should be administered with caution.
19 Frequent clinical evaluation and laboratory tests to monitor liver function such as bilirubin, liver
20 function parameters should be conducted [*see Warnings and Precautions 5.10*].

21 **8.7 Renal Impairment**

22 In patients with impaired renal function, PERIKABIVEN[®] should be administered with caution.
23 Frequent clinical evaluation and laboratory tests to monitor renal function such as serum electrolytes
24 (especially phosphate and potassium) and fluid balance should be conducted [*see Dosage and*
25 *Administration (2.4) and Warnings and Precautions (5.11)*].

26 **10 OVERDOSAGE**

27 In the event of overdose, fat overload syndrome may result [*see Warnings and Precautions (5.4)*].
28 Stop the infusion of PERIKABIVEN[®] to allow lipids to clear from serum. The effects are usually
29 reversible after the lipid infusion is stopped. If medically appropriate, further intervention may be
30 indicated. The lipid administered and fatty acids produced are not dialyzable.
31

1 **11 DESCRIPTION**

2 PERIKABIVEN[®] is a sterile, hypertonic emulsion, for peripheral or central venous administration, in
3 a Three Chamber Bag. The product contains no added sulfites.

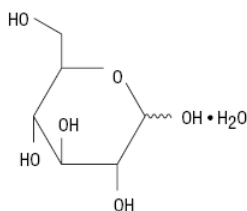
4 Chamber 1 contains Dextrose solution for fluid replenishment and caloric supply.

5 Chamber 2 contains the Amino Acid solution with Electrolytes, which comprises essential and
6 nonessential amino acids provided with electrolytes.

7 Chamber 3 contains Intralipid[®] 20% (a 20% Lipid Injectable Emulsion), prepared for intravenous
8 administration as a source of calories and essential fatty acids.

9 See below for formulations of each chamber and Table 2 for strength, pH, osmolarity, ionic
10 concentration and caloric content of PERIKABIVEN[®] when all the chambers are mixed together.

11 **Chamber 1:** Contains sterile, hypertonic solution of Dextrose, USP in water for injection with a pH
12 range of 3.5 to 5.5. Dextrose, USP is chemically designated D-glucose, monohydrate (C₆H₁₂O₆ •
13 H₂O) and has the following structure:





15 **Chamber 2:** Contains a sterile solution of amino acids and electrolytes in water for injection. In
16 addition, glacial acetic acid has been added to adjust the pH so that the final solution pH is 5.4 to 5.8.
17 The formulas for the individual electrolytes and amino acids are as follows:
18

1

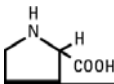

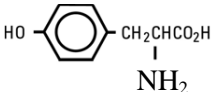
Electrolytes

Sodium Acetate Trihydrate, USP	$\text{CH}_3\text{COONa} \cdot 3\text{H}_2\text{O}$
Potassium Chloride, USP	KCl
Sodium Glycerophosphate	$\text{C}_3\text{H}_5(\text{OH})_2\text{PO}_4\text{Na}_2 \cdot x\text{H}_2\text{O}$
Magnesium Sulfate Heptahydrate, USP	$\text{MgSO}_4 \cdot 7\text{H}_2\text{O}$
Calcium Chloride Dihydrate, USP	$\text{CaCl}_2 \cdot 2\text{H}_2\text{O}$

Essential Amino Acids

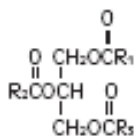
Lysine (added as the hydrochloride salt)	$\text{H}_2\text{N}(\text{CH}_2)_4\text{CH}(\text{NH}_2)\text{COOH} \cdot \text{HCl}$
Phenylalanine	
Leucine	$(\text{CH}_3)_2\text{CHCH}_2\text{CH}(\text{NH}_2)\text{COOH}$
Valine	$(\text{CH}_3)_2\text{CHCH}(\text{NH}_2)\text{COOH}$
Threonine	$\text{CH}_3\text{CH}(\text{OH})\text{CH}(\text{NH}_2)\text{COOH}$
Methionine	$\text{CH}_3\text{S}(\text{CH}_2)_2\text{CH}(\text{NH}_2)\text{COOH}$
Isoleucine	$\text{CH}_3\text{CH}_2\text{CH}(\text{CH}_3)\text{CH}(\text{NH}_2)\text{COOH}$
Tryptophan	

Nonessential Amino Acids

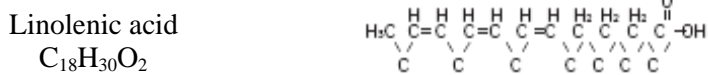
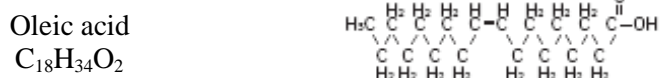
Alanine	$\text{CH}_3\text{CH}(\text{NH}_2)\text{COOH}$
Arginine	$\text{H}_2\text{NC}(\text{NH})\text{NH}(\text{CH}_2)_3\text{CH}(\text{NH}_2)\text{COOH}$
Glycine	$\text{H}_2\text{NCH}_2\text{COOH}$
Proline	
Histidine	
Glutamic Acid	$\text{HOOC}(\text{CH}_2)_2\text{CH}(\text{NH}_2)\text{COOH}$
Serine	$\text{HOCH}_2\text{CH}(\text{NH}_2)\text{COOH}$
Aspartic Acid	$\text{HOOCCH}_2\text{CH}(\text{NH}_2)\text{COOH}$
Tyrosine	

Chamber 3: Contains a 20% Lipid Injectable Emulsion (Intralipid® 20%) which is made up of 20% Soybean Oil, 1.2% Egg Yolk Phospholipids, 2.25% Glycerin, and water for injection. In addition, sodium hydroxide has been added to adjust the pH. The final product pH range is 6 to 9.

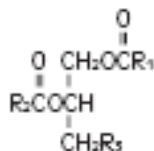
The soybean oil is a refined natural product consisting of a mixture of neutral triglycerides of predominantly unsaturated fatty acids with the following structure:



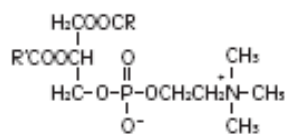
where $\text{R}_1\text{C}-$, $\text{R}_2\text{C}-$ and $\text{R}_3\text{C}-$ are saturated and unsaturated fatty acid residues. The major component fatty acids are linoleic (48 to 58 %), oleic (17 to 30%), palmitic (9 to 13%), linolenic (5 to 11%) and stearic acid (2.5 to 5%). These fatty acids have the following chemical and structural formulas:



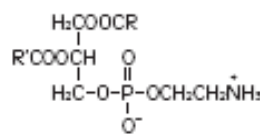
Purified egg phosphatides are a mixture of naturally occurring phospholipids which are isolated from the egg yolk. These phospholipids have the following general structure:



$\text{R}_1\text{C}-$ and $\text{R}_2\text{C}-$ contain saturated and unsaturated fatty acids that abound in neutral fats. R_3 is primarily either the choline or ethanolamine ester of phosphoric acid.



Phosphatidylcholine



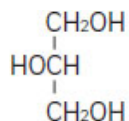
Phosphatidylethanolamine

1

2

Glycerin is chemically designated $\text{C}_3\text{H}_8\text{O}_3$ and is a clear colorless, hygroscopic syrupy liquid. It has the following structural formula:

3



4

5

The container-solution unit is a closed system and is not dependent upon entry of external air during administration. The container is overwrapped to provide protection from the physical environment and to provide an additional oxygen and moisture barrier when necessary. An oxygen absorber is placed between the inner bag and the overpouch.

6

7

8

9

The container is not made with natural rubber latex or polyvinyl chloride (PVC).

10 **12 CLINICAL PHARMACOLOGY**

11 **12.1 Mechanism of Action**

12 PERIKABIVEN[®] is used as a supplement or as the sole source of nutrition in patients, providing
13 macronutrients (amino acids, dextrose and lipids) and micronutrients (electrolytes) parenterally.

14 The amino acids provide the structural units that make up proteins and are used to synthesize
15 proteins and other biomolecules or are oxidized to urea and carbon dioxide as a source of energy.

16 The administered dextrose is oxidized to carbon dioxide and water, yielding energy.

17 Intravenously administered lipids provide a biologically utilizable source of calories and essential
18 fatty acids. Fatty acids serve as an important substrate for energy production. The most common
19 mechanism of action for energy derived from fatty acid metabolism is beta-oxidation. Fatty acids
20 are important for membrane structure and function, precursors for bioactive molecules (such as
21 prostaglandins), and as regulators of gene expression.

22 **12.3 Pharmacokinetics**

23 The infused lipid particles provided by PERIKABIVEN[®] are expected to be cleared from the blood
24 stream in a manner thought to be comparable to the clearing of chylomicrons. In healthy volunteers,
25 the maximum clearance rate of the triglycerides after fasting overnight has been found to be
26 $3.8 \pm 1.5 \text{ g/kg per 24 hours}$.

Both elimination and oxidation rates are dependent on the patient's clinical condition; elimination is faster and utilization is increased in postoperative patients, in sepsis, burns and trauma, while patients with renal impairment may show lower utilization of exogenous lipid emulsions. Due to differences in elimination, patients with these conditions should be closely monitored during PERIKABIVEN[®] administration [see *Warnings and Precautions (5.3, 5.11)*].

The disposition of infused amino acids, dextrose and electrolytes are essentially the same as those supplied by ordinary food.

A clinical study in healthy volunteers employing high intravenous doses (80 mmol) of either sodium glycerophosphate used in PERIKABIVEN[®] or reference, inorganic sodium phosphate demonstrated that both compounds resulted in comparable serum inorganic phosphate concentrations after a single intravenous dose. Changes from baseline in the serum levels of sodium, potassium and total calcium were comparable across the two phosphate sources in this study.

13 NONCLINICAL TOXICOLOGY

13.1 Carcinogenesis, Mutagenesis, Impairment of Fertility

Long-term animal studies have not been conducted to evaluate carcinogenic potential of PERIKABIVEN[®] or its effect on fertility. Genotoxicity studies have not been conducted with PERIKABIVEN[®] to assess its mutagenic potential.

15 REFERENCES

1. Ayers P. et al. A.S.P.E.N. Parenteral Nutrition Handbook, 2nd ed. 2014 pg. 123.
2. Mueller CM ed. The A.S.P.E.N. Nutrition Support Core Curriculum 2nd ed. 2012. Chapter 29
Wolk R, Foulks C. Renal Disease., pg. 500

16 HOW SUPPLIED/STORAGE AND HANDLING

PERIKABIVEN[®] is sterile emulsion available in the following 3 sizes:

<u>NDC</u>	<u>Volume</u>
63323-714-24	2400 mL
63323-714-19	1920 mL
63323-714-14	1440 mL

Exposure of pharmaceutical products to heat should be minimized. Avoid excessive heat. Protect from freezing. If accidentally frozen, discard the bag. It is recommended that the product be stored at 20° to 25°C (68° to 77°F) [see USP Controlled Room Temperature].

Do not remove container from overpouch until intended for use.

1 After breaking the vertical peel seals, chemical and physical in-use stability of the mixed three
2 chamber bag has been demonstrated for 24 hours at 25°C (77°F).

3 The product should be used immediately after mixing and the introduction of additives. If not used
4 immediately, the storage time and conditions prior to use should not be stored longer than 24 hours
5 at 2° to 8°C (36° to 46°F). After removal from storage at 2° to 8°C (36° to 46°F), the admixture
6 should be infused within 24 hours. Any mixture remaining must be discarded.

7 **17 PATIENT COUNSELING INFORMATION**

8 To ensure the safe and effective use of PERIKABIVEN[®], this information should be discussed with
9 the patient.

10 **Inform patients of the following:**

- 11 • PERIKABIVEN[®] is given by infusion through a peripheral or central vein catheter.
- 12 • Allergic reactions to PERIKABIVEN[®] may occur.
- 13 • There is a risk of infection and sepsis associated with formulations administered intravenously.
- 14 • PERIKABIVEN[®] may cause adverse reactions such as nausea and vomiting, excess fat (lipids)
15 in the blood, high blood sugar, abnormally increased transaminase and bilirubin, or abnormally
16 high or low blood electrolyte levels.
- 17 • Contact their healthcare provider if they develop symptoms of an allergic reaction, infection,
18 high blood sugar, low blood sugar, nausea, vomiting, or fluid retention occurs.
- 19 • Have periodic laboratory tests and routinely follow-up with their healthcare provider.
- 20 • Inform their healthcare provider about any changes in prescription or over the counter
21 medications and supplements to avoid potential drug interactions and side effects.

22 **When patients self-administer PERIKABIVEN[®] injection at home, inform patients of the** 23 **following:**

- 24 • Patients and/or caregiver must be trained in how to inspect, activate and administer
25 PERIKABIVEN[®].
- 26 • Follow the PERIKABIVEN[®] inspection, activation and administration instructions provided by
27 their home care provider, and Prescribing Information [*see Dosage and Administration (2.1, 2.2*
28 *and 2.3)*].
- 29 • Do not deviate from the administration instructions given by the health care provider.
- 30 • Inspect PERIKABIVEN[®] before using for evidence of damage, particulate matter, and/or
31 discoloration.
- 32 • Discard the bag in the following situations:

- 1 ○ Evidence of damage to the bag
- 2 ○ More than one chamber is white
- 3 ○ Solution is yellow
- 4 ○ Any seal is already broken
- 5 • Prior to activation, store PERIKABIVEN[®] between 20° to 25°C (68° to 77°F).
- 6 • Activate bag just prior to use or refrigerate activated bag at 2 to 8°C (36 to 46°F) for up to 24
- 7 hours. Discard any unused portion.
- 8 • After activation and prior to administration carefully inspect bag for separation of the lipid
- 9 emulsion, which can be visibly identified by a yellowish streaking or the accumulation of
- 10 yellowish droplets in the mixed emulsion. Discard the bag if this occurs.

11 Additional information is available at www.KabivenUSA.com.

12 The brand names mentioned in this document are the trademarks of their respective owners.

13 Manufactured by:



15 Uppsala, Sweden

16

17 451207

18 Issued: August 2014