

(b) (4)

NDC 39822-1030-1      2 mL Single Dose-Vial      BUL-VL-02

**Ibuprofen Lysine Injection**

**20 mg/2 mL  
(10 mg/mL)**

For Intravenous Use Only


**XGEN**  
PHARMACEUTICALS, INC.

**Usual Dosage:**  
See package insert.

Store at 20° to 25°C (68° to 77°F); excursions permitted 15° to 30°C (59° to 85°F).  
Store vials in carton until use.

**XGEN**  
PHARMACEUTICALS, INC.  
Big Flax, NY 14814

Made in USA by:  
Exela Pharma Sciences, LLC  
Lenoir, NC 28645



39822-1030-1 4

Lot #  
Exp.

200%

NDC 39822-1030-1      2 mL Single-Dose Vial      IBUL-VL-02

**Ibuprofen Lysine Injection**

**20 mg/2 mL  
(10 mg/mL)**

For Intravenous Use Only

**XGEN**  
PHARMACEUTICALS, INC.


**Usual Dosage:**  
See package insert.

Store at 20° to 25°C (68° to 77°F); excursions permitted 15° to 30°C (59° to 85°F).  
Store vials in carton until use.

**XGEN**  
PHARMACEUTICALS, INC.

Distributed by:  
X-GEN Pharmaceuticals, Inc.  
Big Flax, NY 14814

Manufactured by:  
Exela Pharma Sciences, LLC  
Lenoir, NC 28645

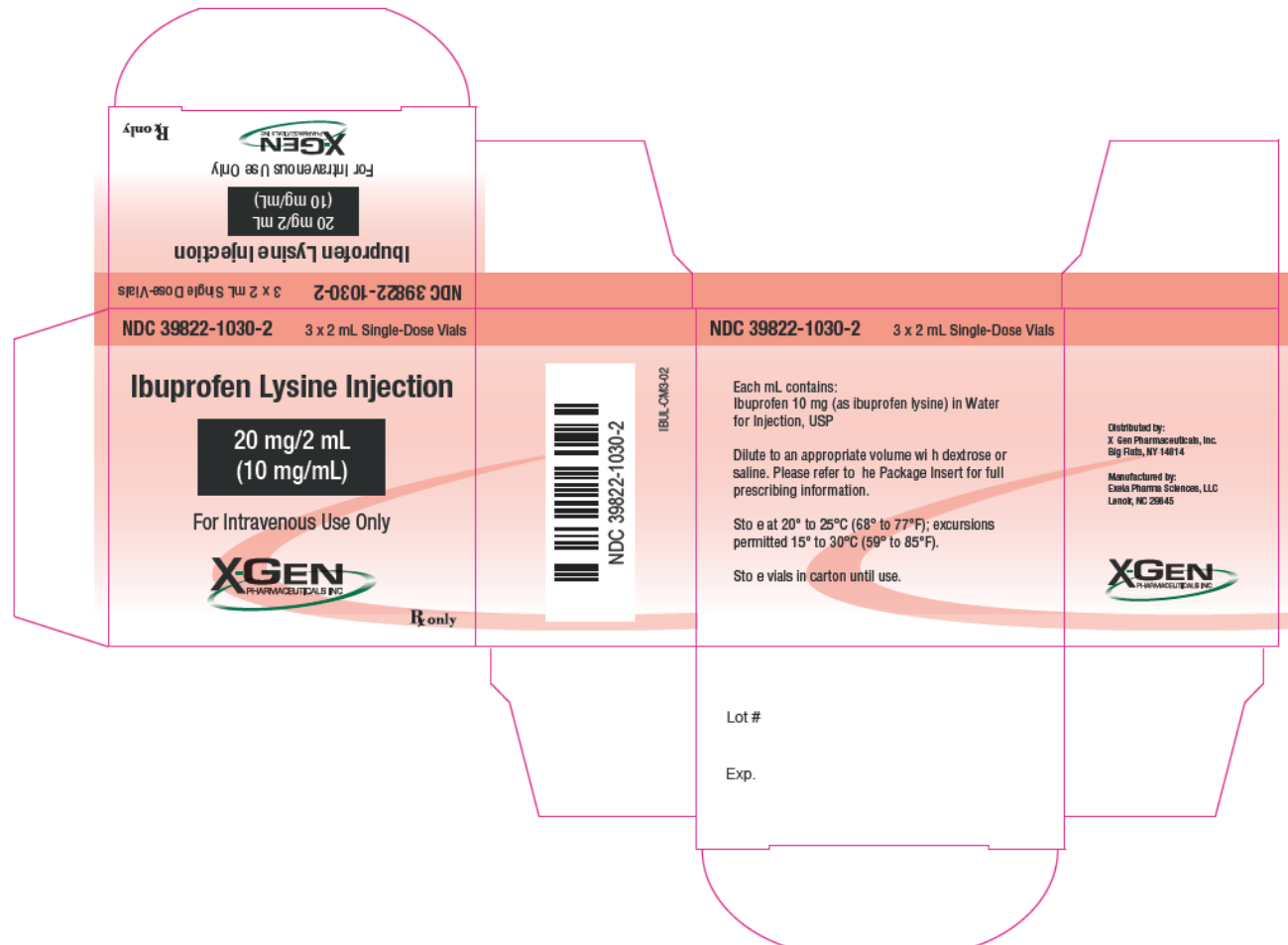


39822-1030-1 4

Lot #  
Exp.

IBUPROFEN LYISINE INJECTION, USP  
Initial RND A Mockup  
4-25-2013  
Vial: Version 1, Rev. 2

(b) (4)



IBUPROFEN LYSINE INJECTION, USP  
Initial RND A Mockup  
4/21/2015  
Carton: Version 01, Rev. 4

#### HIGHLIGHTS OF PRESCRIBING INFORMATION

These highlights do not include all the information needed to use IBUPROFEN LYSINE INJECTION safely and effectively. See full prescribing information for IBUPROFEN LYSINE INJECTION.

**IBUPROFEN LYSINE Injection, for intravenous use**

Initial U.S. Approval: 2006

#### INDICATIONS AND USAGE

Ibuprofen Lysine Injection is indicated to close a clinically significant patent ductus arteriosus (PDA) in premature infants weighing between 500 and 1500 g, who are no more than 32 weeks gestational age when usual medical management is ineffective. The clinical trial was conducted among infants with an asymptomatic PDA. However, the consequences beyond 8 weeks after treatment have not been evaluated; therefore, treatment should be reserved for infants with clear evidence of a clinically significant PDA. (1)

#### DOSAGE AND ADMINISTRATION

- A course of therapy is three doses administered I.V. (2.1)
- An initial dose of 10 mg/kg (based on birth weight) is followed by two doses of 5 mg/kg each, after 24 and 48 hours (2.1)
- Do not administer if anuria or marked oliguria (<0.6mL/kg/hr) is evident at the scheduled time of the second or third dose. (2.1)

#### DOSAGE FORMS AND STRENGTHS

- 10 mg/mL as a clear sterile preservative-free solution of the L-lysine salt of ibuprofen in a 2 mL single-use vial (3)

#### CONTRAINDICATIONS

Ibuprofen Lysine Injection is contraindicated in preterm infants:

- With proven or suspected infection that is untreated (4)
- With congenital heart disease in whom patency of the PDA is necessary for satisfactory pulmonary or systemic blood flow (4)
- With impaired renal function (4)
- With thrombocytopenia, coagulation defects or who are bleeding (4)
- With or who are suspected of having necrotizing enterocolitis (4)

#### WARNINGS AND PRECAUTIONS

- Ibuprofen Lysine Injection has not been assessed for neurodevelopmental outcome and growth (5.1)
- Ibuprofen Lysine Injection may alter the usual signs of infection. (5.2)
- Ibuprofen Lysine Injection can inhibit platelet aggregation, and has been shown to prolong bleeding time in normal adult subjects (5.3)
- Ibuprofen has been shown to displace bilirubin from a bumin binding-sites (5.4)
- Ibuprofen Lysine Injection should be administered carefully to avoid extravascular injection or leakage (5.5)

#### ADVERSE REACTIONS

Most common adverse reactions (≥10%) are sepsis, anemia, intraventricular bleeding, apnea, gastrointestinal disorders, impaired renal function, respiratory infection, skin lesions, hypoglycemia, hypocalcemia, respiratory failure. (6)

To report SUSPECTED ADVERSE REACTIONS, contact Exela Pharma Sciences, LLC at 888-451-4321, or FDA at 1-800-FDA-1088 or [www.fda.gov/medwatch](http://www.fda.gov/medwatch).

#### DRUG INTERACTIONS

Drug interactions in neonates have not been assessed. (7)

See 17 for PATIENT COUNSELING INFORMATION

Revised: 01/2016

#### FULL PRESCRIBING INFORMATION: CONTENTS\*

##### RECENT MAJOR CHANGES

##### 1 INDICATIONS AND USAGE

##### 2 DOSAGE AND ADMINISTRATION

2.1 Recommended Dose

2.2 Directions for Use

##### 3 DOSAGE FORMS AND STRENGTHS

##### 4 CONTRAINDICATIONS

##### 5 WARNINGS AND PRECAUTIONS

5.1 General

5.2 Infection

5.3 Platelet Aggregation

5.4 Bilirubin Displacement

5.5 Administration

##### 6 ADVERSE REACTIONS

6.1 Clinical Trials Experience

6.2 Renal Function

6.3 Additional Adverse Events

6.4 Post-marketing Experience

##### 7 DRUG INTERACTIONS

##### 10 OVERDOSAGE

##### 11 DESCRIPTION

##### 12 CLINICAL PHARMACOLOGY

12.1 Mechanism of Action

12.2 Pharmacokinetics and Bioavailability Studies

##### 14 CLINICAL STUDIES

##### 16 HOW SUPPLIED/STORAGE AND HANDLING

##### 17 PATIENT COUNSELING INFORMATION

17.1 General

17.2 Infection

17.3 Platelet Aggregation

17.4 Bilirubin Displacement

17.5 Administration

\*Sections or subsections omitted from the full prescribing information are not listed

## FULL PRESCRIBING INFORMATION

### 1 INDICATIONS AND USAGE

Ibuprofen Lysine Injection is indicated to close a clinically significant patent ductus arteriosus (PDA) in premature infants weighing between 500 and 1500 g, who are no more than 32 weeks gestational age when usual medical management (e.g., fluid restriction, diuretics, respiratory support, etc.) is ineffective. The clinical trial was conducted among infants with an asymptomatic PDA. However, the consequences beyond 8 weeks after treatment have not been evaluated; therefore, treatment should be reserved for infants with clear evidence of a clinically significant PDA.

### 2 DOSAGE AND ADMINISTRATION

#### 2.1 Recommended Dose

A course of therapy is three doses of Ibuprofen Lysine Injection administered intravenously (administration via an umbilical arterial line has not been evaluated). An initial dose of 10 mg per kilogram is followed by two doses of 5 mg per kilogram each, after 24 and 48 hours. All doses should be based on birth weight. If anuria or marked oliguria (urinary output  $<0.6$  mL/kg/hr) is evident at the scheduled time of the second or third dose of Ibuprofen Lysine Injection, no additional dosage should be given until laboratory studies indicate that renal function has returned to normal. If the ductus arteriosus closes or is significantly reduced in size after completion of the first course of Ibuprofen Lysine Injection, no further doses are necessary. If during continued medical management the ductus arteriosus fails to close or reopens, then a second course of Ibuprofen Lysine Injection, alternative pharmacological therapy, or surgery may be necessary.

#### 2.2 Directions for Use

For intravenous administration only. Parenteral drug products should be inspected visually for particulate matter and discoloration prior to administration whenever solution and container permit.

Do not use Ibuprofen Lysine Injection if particulate matter is observed.

After the first withdrawal from the vial, any solution remaining must be discarded because Ibuprofen Lysine Injection contains no preservative.

For administration, Ibuprofen Lysine Injection should be diluted to an appropriate volume with dextrose or saline. Ibuprofen Lysine Injection should be prepared for infusion and administered within 30 minutes of preparation and infused continuously over a period of 15 minutes. The drug should be administered via the IV port that is nearest the insertion site. After the first withdrawal from the vial, any solution remaining must be discarded because Ibuprofen Lysine Injection contains no preservative.

Since Ibuprofen Lysine Injection is potentially irritating to tissues, it should be administered carefully to avoid extravasation.

Ibuprofen Lysine Injection should not be simultaneously administered in the same intravenous line with Total Parenteral Nutrition (TPN). If necessary, TPN should be interrupted for a 15-minute period prior to and after drug administration. Line patency should be maintained by using dextrose or saline.

### 3 DOSAGE FORMS AND STRENGTHS

10 mg/mL as a clear sterile preservative-free solution of the L-lysine salt of ibuprofen in a 2 mL single-use vial

### 4 CONTRAINDICATIONS

Ibuprofen Lysine Injection is contraindicated in:

- Preterm infants with proven or suspected infection that is untreated;
- Preterm infants with congenital heart disease in whom patency of the PDA is necessary for satisfactory pulmonary or systemic blood flow (e.g., pulmonary atresia, severe tetralogy of Fallot, severe coarctation of the aorta);
- Preterm infants who are bleeding, especially those with active intracranial hemorrhage or gastrointestinal bleeding;

- Preterm infants with thrombocytopenia;
- Preterm infants with coagulation defects;
- Preterm infants with or who are suspected of having necrotizing enterocolitis;
- Preterm infants with significant impairment of renal function.

## 5. WARNINGS AND PRECAUTIONS

### 5.1 General

There are no long-term evaluations of the infants treated with ibuprofen at durations greater than the 36 weeks post-conceptual age observation period. Ibuprofen's effects on neurodevelopmental outcome and growth as well as disease processes associated with prematurity (such as retinopathy of prematurity and chronic lung disease) have not been assessed.

### 5.2 Infection

Ibuprofen Lysine Injection may alter the usual signs of infection. The physician must be continually on the alert and should use the drug with extra care in the presence of controlled infection and in infants at risk of infection.

### 5.3 Platelet Aggregation

Ibuprofen Lysine Injection, like other non-steroidal anti-inflammatory agents, can inhibit platelet aggregation. Preterm infants should be observed for signs of bleeding. Ibuprofen has been shown to prolong bleeding time (but within the normal range) in normal adult subjects. This effect may be exaggerated in patients with underlying hemostatic defects (see CONTRAINDICATIONS).

### 5.4 Bilirubin Displacement

Ibuprofen has been shown to displace bilirubin from albumin binding-sites; therefore, it should be used with caution in patients with elevated total bilirubin.

### 5.5 Administration

Ibuprofen Lysine Injection should be administered carefully to avoid extravascular injection or leakage, as solution may be irritating to tissue.

## 6 ADVERSE REACTIONS

### 6.1 Clinical Trials Experience

The most frequently reported adverse events with Ibuprofen Lysine Injection were as shown in Table 1.

<b>TABLE 1. Adverse Events within 30 Days of Therapy in the Multicenter Study*</b>		
<b>Adverse Event</b>	<b>% Incidence</b>	
	<b>Ibuprofen Lysine Injection</b>	<b>Placebo</b>
<b>Sepsis</b>	<b>43</b>	<b>37</b>
<b>Anemia</b>	<b>32</b>	<b>25</b>
<b>Total Bleeding **</b>	<b>32</b>	<b>29</b>
<b>Intraventricular Hemorrhage Grades 1/2</b>	15	13
<b>Intraventricular Hemorrhage, Grades 3/4</b>	15	10
<b>Other Bleeding</b>	6	13
<b>Intraventricular Hemorrhage, All Grades</b>	<b>29</b>	<b>24</b>

Apnea	28	26
Gastrointestinal Disorders non-Necrotizing Enterocolitis	22	18
Total Renal Events **	21	15
Renal Failure	1	3
Renal Insufficiency, Impairment	6	4
Urine Output Reduced	3	1
Blood Creatinine Increased	3	1
Blood Urea Increased with Hematuria	1	1
Blood Urea Increased	7	4
Respiratory Infection	19	13
Skin Lesion/Irritation	16	6
Hypoglycemia	12	6
Hypocalcemia	12	9
Respiratory Failure	10	4
Urinary Tract Infection	9	4
Adrenal Insufficiency	7	1
Hypernatremia	7	4
Edema	4	0
Atelectasis	4	1

\*Within 30 days of therapy with an event rate greater on Ibuprofen Lysine Injection than on placebo, and greater than 2 events on Ibuprofen Lysine Injection.

\*\*A given subject may have experienced more than one specific event within these adverse event categories. Only the most severe grade of IVH counted for a given subject.

## 6.2 Renal Function

Compared to placebo, there was a small decrease in urinary output in the ibuprofen group on days 2-6 of life, with a compensatory increase in urine output on day 9. In other studies, adverse events classified as renal insufficiency including oliguria, elevated BUN, elevated creatinine, or renal failure were reported in ibuprofen treated infants.

## 6.3 Additional Adverse Events

The adverse events reported in the multicenter study and of unknown association include tachycardia, cardiac failure, abdominal distension, gastroesophageal reflux, gastritis, ileus, inguinal hernia, injection site reactions, cholestasis, various infections, feeding problems, convulsions, jaundice, hypotension, and various laboratory abnormalities including neutropenia, thrombocytopenia, and hyperglycemia.

## 6.4 Post-marketing Experience

The following adverse reactions have been identified from spontaneous post-marketing reports or published literature: gastrointestinal perforation, necrotizing enterocolitis and Pulmonary hypertension. Because these reactions are reported voluntarily from a population of uncertain size, it is not always possible to reliably estimate their frequency, or establish a causal relationship to drug exposure.

## 7 DRUG INTERACTIONS

Drug interactions of Ibuprofen Lysine Injection in neonates have not been assessed.

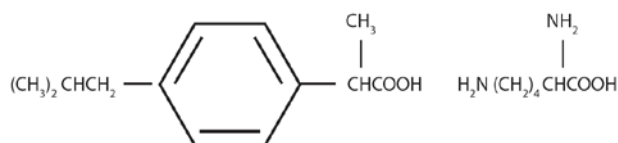
## 10 OVERDOSAGE

The following signs and symptoms have occurred in individuals (not necessarily in premature infants) following an overdose of oral ibuprofen: breathing difficulties, coma, drowsiness, irregular heartbeat, kidney failure, low blood pressure, seizures, and vomiting. There are no specific measures to treat acute overdose with Ibuprofen Lysine Injection. The patient should be followed for several days because gastrointestinal ulceration and hemorrhage may occur.

## 11 DESCRIPTION

Ibuprofen Lysine Injection is a clear sterile preservative-free solution of the L-lysine salt of ( $\pm$ )-ibuprofen which is the active ingredient. ( $\pm$ )-Ibuprofen is a nonsteroidal anti-inflammatory agent (NSAID). L-lysine is used to create a water-soluble drug product salt suitable for intravenous administration. Each mL of Ibuprofen Lysine Injection contains 17.1 mg of ibuprofen lysine (equivalent to 10 mg of ( $\pm$ )-ibuprofen) in Water for Injection, USP. The pH is adjusted to 7.0 with sodium hydroxide or hydrochloric acid.

The structural formula is:



Ibuprofen Lysine Injection is designated chemically as  $\alpha$ -methyl-4-(2-methyl propyl) benzeneacetic acid lysine salt. Its molecular weight is 352.48. Its empirical formula is C<sub>19</sub>H<sub>32</sub>N<sub>2</sub>O<sub>4</sub>. It occurs as a white crystalline solid which is soluble in water and slightly soluble in ethanol.

## 12 CLINICAL PHARMACOLOGY

### 12.1 Mechanism of Action

The mechanism of action through which ibuprofen causes closure of a patent ductus arteriosus (PDA) in neonates is not known. In adults, ibuprofen is an inhibitor of prostaglandin synthesis.

### 12.2 Pharmacokinetics and Bioavailability Studies

The pharmacokinetic data were obtained from 54 Ibuprofen Lysine Injection-treated premature infants included in a double-blind, placebo-controlled, randomized, multicenter study. Infants were less than 30 weeks gestational age, weighed between 500 and 1000 g, and exhibited asymptomatic PDA with evidence of echocardiographic documentation of ductal shunting. Dosing was initially 10 mg/kg followed by 5 mg/kg at 24 and 48 hours.

The population average clearance and volume of distribution values of racemic ibuprofen for premature infants at birth were 3 mL/kg/h and 320 mL/kg, respectively. Clearance increased rapidly with post-natal age (an average increase of approximately 0.5 mL/kg/h per day). Inter-individual variability in clearance and volume of distribution were 55% and 14%, respectively. In general, the half-life in infants is more than 10 times longer than in adults.

The metabolism and excretion of ibuprofen in premature infants have not been studied.

In adults, renal elimination of unchanged ibuprofen accounts for only 10-15% of the dose. The excretion of ibuprofen and metabolites occurs rapidly in both urine and feces. Approximately 80% of the dose administered orally is recovered in urine as hydroxyl and carboxyl metabolites, respectively, as a mixture of conjugated and unconjugated forms. Ibuprofen is eliminated primarily by metabolism in the liver where CYP2C9 mediates the 2- and 3-hydroxylations of R- and S-ibuprofen. Ibuprofen and its metabolites are further conjugated to acyl glucuronides.

In neonates, renal function and the enzymes associated with drug metabolism are underdeveloped at birth and substantially increase in the days after birth.

#### 14 CLINICAL STUDIES

In a double-blind, multicenter clinical study premature infants of birth weight between 500 and 1000 g, less than 30 weeks post-conceptual age, and with echocardiographic evidence of a PDA were randomized to placebo or Ibuprofen Lysine Injection. These infants were asymptomatic from their PDA at the time of enrollment. The primary efficacy parameter was the need for rescue therapy (indomethacin, open-label ibuprofen, or surgery) to treat a hemodynamically significant PDA by study day 14. An infant was rescued if there was clinical evidence of a hemodynamically significant PDA that was echocardiographically confirmed. A hemodynamically significant PDA was defined by three of the following five criteria — bounding pulse, hyperdynamic precordium, pulmonary edema, increased cardiac silhouette, or systolic murmur — or hemodynamically significant ductus as determined by a neonatologist.

One hundred and thirty-six premature infants received either placebo or Ibuprofen Lysine Injection (10 mg/kg on the first dose and 5 mg/kg at 24 and 48 hours). Mean birth age was 1.5 days (range: 4.6 – 73.0 hours), mean gestational age was 26 weeks (range: 23 – 30 weeks), and mean weight was 798 g (range: 530 – 1015 g). All infants had a documented PDA with evidence of ductal shunting. As shown in Table 2, 25% of infants on Ibuprofen Lysine Injection required rescue therapy versus 48% of infants on placebo (p=0.003 from logistic regression controlling for site).

<b>Table 2. Summary of Efficacy Results, n (%)</b>		
	<b>Ibuprofen Lysine Injection N=68</b>	<b>Placebo N=68</b>
<b>Required rescue through study day 14</b>		
<b>Total</b>	17 (25)	33 (48)
<b>By age at treatment</b>		
<b>Birth to &lt; 24 hours</b>	3/14 (21)	8/16 (50)
<b>24-48 hours</b>	9/32 (28)	16/37 (43)
<b>&gt; 48 hours</b>	5/22 (23)	9/15 (60)
<b>Echocardiographically proven PDA prior to rescue</b>	17 (100)	32 (97)
<b>Reasons for Rescue</b>		
Hemodynamically significant PDA per neonatologist	14 (82)	25 (76)
Bounding pulse	6 (35)	12 (36)
Systolic murmur	6 (35)	15 (45)
Pulmonary Edema	3 (18)	5 (15)
Hyperdynamic precordium	2 (12)	3 (9)
Increased cardiac silhouette	1 (6)	5 (15)

Of the infants requiring rescue within the first 14 days after the first dose of study drug, no statistically significant difference was observed between the Ibuprofen Lysine Injection and placebo groups for mean age at start of first rescue treatment (8.7 days, range 4-15 days, for the Ibuprofen Lysine Injection group and 6.9 days, range 2-15 days, for the placebo group).

The groups were similar in the number of deaths by day 14, the number of patients on a ventilator or requiring oxygenation at day 1, 4 and 14, the number of patients requiring surgical ligation of their PDA (12%), the number of cases of Pulmonary Hemorrhage and Pulmonary Hypertension by day 14, and Bronchopulmonary Dysplasia at day 28. In addition, no significant differences were noted in the incidences of Stage 2 and 3 Necrotizing Enterocolitis, Grades 3 and 4 Intraventricular Hemorrhage, Periventricular Leukomalacia and Retinopathy of Prematurity between groups as determined at 36±1 weeks adjusted gestational age.

Two supportive studies also determined that ibuprofen, either prophylactically (n=433, weight range: 400 – 2165 g) or as treatment (n=210, weight range: 400 – 2370 g), was superior to placebo (or no treatment) in preventing the need for rescue therapy for a symptomatic PDA.

## 16 HOW SUPPLIED/STORAGE AND HANDLING

### How Supplied

Ibuprofen Lysine Injection is dispensed in clear glass single-use vials, each containing 2 mL of sterile solution (NDC 39822-1030-1). The solution is not buffered and contains no preservatives. Each milliliter contains 17.1 mg/mL ( $\pm$ )-ibuprofen L-lysine [equivalent to 10 mg/mL ( $\pm$ )-ibuprofen] dissolved in Water for Injection, USP. Ibuprofen Lysine Injection is supplied in a carton containing 3 single-use vials (NDC 39822-1030-2).

Storage and Handling Store at 20-25°C (68-77°F); excursions permitted 15-30°C (59-86°F) [see USP Controlled Room Temperature]. Protect from light. Store vials in carton until contents have been used.

## 17 PATIENT COUNSELING INFORMATION

### 17.1 General

Patients' caregivers should be informed that the effects of ibuprofen on infants' neurodevelopmental outcome, growth and disease process with prematurity have not been assessed in long-term studies.

### 17.2 Infection

Ibuprofen Lysine Injection may alter signs of infection. Patients' caregivers should be informed that the infant will be carefully monitored for any signs of infection.

### 17.3 Platelet Aggregation

Patients' caregivers should be informed that like other NSAIDS, Ibuprofen Lysine Injection can inhibit clot formation therefore their infant will be monitored for any signs of bleeding.

### 17.4 Bilirubin Displacement

Patients' caregivers should be informed that the infants' blood will be tested for increased levels of total bilirubin.

### 17.5 Administration

Patients' caregivers should be informed that the infants' skin and tissues will be monitored as leakage from administration may be irritating to tissue.



#### **Manufactured by:**

Exela Pharma Sciences, LLC  
Lenoir, NC 28645

#### **Manufactured for:**

X-GEN Pharmaceuticals, Inc.  
Big Flats NY 14814.  
IBUL-PI-05