

HIGHLIGHTS OF PRESCRIBING INFORMATION

These highlights do not include all the information needed to use ICLUSIG safely and effectively. See full prescribing information for ICLUSIG.

ICLUSIG® (ponatinib) tablets, for oral use
Initial U.S. Approval: 2012

WARNING: VASCULAR OCCLUSION, HEART FAILURE, and HEPATOTOXICITY

See full prescribing information for complete boxed warning.

- **Vascular Occlusion:** Arterial and venous thrombosis and occlusions have occurred in at least 27% of Iclusig treated patients, including fatal myocardial infarction, stroke, stenosis of large arterial vessels of the brain, severe peripheral vascular disease, and the need for urgent revascularization procedures. Patients with and without cardiovascular risk factors, including patients less than 50 years old, experienced these events. Monitor for evidence of thromboembolism and vascular occlusion. Interrupt or stop Iclusig immediately for vascular occlusion. (5.1).
- **Heart Failure, including fatalities, occurred in 8% of Iclusig-treated patients. Monitor cardiac function. Interrupt or stop Iclusig for new or worsening heart failure (5.2).**
- **Hepatotoxicity, liver failure and death have occurred in Iclusig-treated patients. Monitor hepatic function. Interrupt Iclusig if hepatotoxicity is suspected (2.3, 5.3).**

RECENT MAJOR CHANGES

Warnings and Precautions (5.1, 5.4)	12/2015
Indications and Usage (1)	06/2016
Warnings and Precautions (5.6)	06/2016

INDICATIONS AND USAGE

Iclusig is a kinase inhibitor indicated for the:

- Treatment of adult patients with T315I-positive chronic myeloid leukemia (chronic phase, accelerated phase, or blast phase) or T315I-positive Philadelphia chromosome positive acute lymphoblastic leukemia (Ph+ ALL).
- Treatment of adult patients with chronic phase, accelerated phase, or blast phase chronic myeloid leukemia or Ph+ ALL for whom no other tyrosine kinase inhibitor (TKI) therapy is indicated. (1)

These indications are based upon response rate. There are no trials verifying an improvement in disease-related symptoms or increased survival with Iclusig.

Limitations of use:

Iclusig is not indicated and is not recommended for the treatment of patients with newly diagnosed chronic phase CML (5.6).

DOSAGE AND ADMINISTRATION

- Recommended dose: 45 mg taken orally once daily with or without food (2.1)
- Hepatic Impairment: 30 mg orally once daily (2.5)
- Modify or interrupt dosing for hematologic and non-hematologic toxicity (2.2, 2.3)

DOSAGE FORMS AND STRENGTHS

Tablets: 15 mg, 30 mg and 45 mg (3)

CONTRAINDICATIONS

None (4)

WARNINGS AND PRECAUTIONS

- Hypertension: Monitor for high blood pressure and manage as clinically indicated (5.4).
- Pancreatitis: Monitor serum lipase monthly; interrupt or discontinue Iclusig (2.3, 5.5).
- Neuropathy: Monitor for symptoms of peripheral and cranial neuropathy (5.7).
- Ocular Toxicity: Conduct comprehensive eye exams at baseline and periodically during treatment (5.8).
- Hemorrhage: Interrupt Iclusig for serious or severe hemorrhage (5.9).
- Fluid Retention: Monitor patients for fluid retention; interrupt, reduce, or discontinue Iclusig (5.10).
- Cardiac Arrhythmias: Monitor for symptoms of arrhythmias (5.11, 6).
- Myelosuppression: Thrombocytopenia, neutropenia, and anemia may require dose interruption or reduction. Monitor complete blood counts every 2 weeks for 3 months and then monthly and as clinically indicated. Interrupt Iclusig for ANC < 1000/mm³ or thrombocytopenia < 50,000/mm³ (2.2, 5.12).
- Tumor Lysis Syndrome: Ensure adequate hydration and correct elevated uric acid levels prior to initiating therapy with Iclusig (5.13).
- Compromised Wound Healing and Gastrointestinal Perforation: Temporarily interrupt therapy in patients undergoing major surgical procedures (5.14).
- Embryo-Fetal Toxicity: Can cause fetal harm. Advise women of potential risk to a fetus (5.15, 8.1).

ADVERSE REACTIONS

The most common non-hematologic adverse reactions (≥ 20%) were hypertension, rash, abdominal pain, fatigue, headache, dry skin, constipation, arthralgia, nausea, and pyrexia. Hematologic adverse reactions included thrombocytopenia, anemia, neutropenia, lymphopenia, and leukopenia (6).

To report SUSPECTED ADVERSE REACTIONS, contact ARIAD Pharmaceuticals, Inc. at 1-855-55-ARIAD or FDA at 1-800-FDA-1088 or www.fda.gov/medwatch.

DRUG INTERACTIONS

- Strong CYP3A Inhibitors: Avoid concurrent use, or reduce Iclusig dose if co-administration cannot be avoided (2.4, 7.1)
- Strong CYP3A Inducers: Avoid concurrent use (7.2)

USE IN SPECIFIC POPULATIONS

The safety and efficacy of Iclusig in patients less than 18 years of age have not been tested (8.4).

See 17 for PATIENT COUNSELING INFORMATION and Medication Guide.

Revised: [06/2016]

FULL PRESCRIBING INFORMATION: CONTENTS*

WARNING: VASCULAR OCCLUSION, HEART FAILURE, and HEPATOTOXICITY

- 1 INDICATIONS AND USAGE**
- 2 DOSAGE AND ADMINISTRATION**
 - 2.1 Recommended Dosing
 - 2.2 Dose Modifications for Myelosuppression
 - 2.3 Dose Modifications for Non-Hematologic Adverse Reactions
 - 2.4 Dose Modifications for Use with Strong CYP3A Inhibitors
 - 2.5 Dose Modifications for Use in Patients with Hepatic Impairment
- 3 DOSAGE FORMS AND STRENGTHS**
- 4 CONTRAINDICATIONS**
- 5 WARNINGS AND PRECAUTIONS**
 - 5.1 Vascular Occlusion
 - 5.2 Heart Failure
 - 5.3 Hepatotoxicity
 - 5.4 Hypertension
 - 5.5 Pancreatitis
 - 5.6 Increased Toxicity in Newly Diagnosed Chronic Phase CML
 - 5.7 Neuropathy
 - 5.8 Ocular Toxicity
 - 5.9 Hemorrhage
 - 5.10 Fluid Retention
 - 5.11 Cardiac Arrhythmias
 - 5.12 Myelosuppression
 - 5.13 Tumor Lysis Syndrome
 - 5.14 Compromised Wound Healing and Gastrointestinal Perforation
 - 5.15 Embryo-Fetal Toxicity

- 6 ADVERSE REACTIONS**
- 7 DRUG INTERACTIONS**
 - 7.1 Drugs that are Strong Inhibitors of CYP3A Enzymes
 - 7.2 Drugs that are Strong Inducers of CYP3A Enzymes
 - 7.3 Drugs that Elevate Gastric pH
- 8 USE IN SPECIFIC POPULATIONS**
 - 8.1 Pregnancy
 - 8.3 Nursing Mothers
 - 8.4 Pediatric Use
 - 8.5 Geriatric Use
 - 8.6 Hepatic Impairment
 - 8.7 Renal Impairment
- 10 OVERDOSAGE**
- 11 DESCRIPTION**
- 12 CLINICAL PHARMACOLOGY**
 - 12.1 Mechanism of Action
 - 12.2 Pharmacodynamics
 - 12.3 Pharmacokinetics
- 13 NONCLINICAL TOXICOLOGY**
 - 13.1 Carcinogenesis, Mutagenesis, Impairment of Fertility
- 14 CLINICAL STUDIES**
- 16 HOW SUPPLIED/STORAGE AND HANDLING**
- 17 PATIENT COUNSELING INFORMATION**

*Sections or subsections omitted from the Full Prescribing Information are not listed.

FULL PRESCRIBING INFORMATION

WARNING: VASCULAR OCCLUSION, HEART FAILURE, and HEPATOTOXICITY

Vascular Occlusion:

- Arterial and venous thrombosis and occlusions have occurred in at least 27% of Iclusig treated patients, including fatal myocardial infarction, stroke, stenosis of large arterial vessels of the brain, severe peripheral vascular disease, and the need for urgent revascularization procedures. Patients with and without cardiovascular risk factors, including patients age 50 years or younger, experienced these events (5.1).
- Monitor for evidence of thromboembolism and vascular occlusion. Interrupt or stop Iclusig immediately for vascular occlusion. A benefit-risk consideration should guide a decision to restart Iclusig therapy (5.1).

Heart Failure:

- Heart failure, including fatalities, occurred in 8% of Iclusig-treated patients. Monitor cardiac function. Interrupt or stop Iclusig for new or worsening heart failure (5.2).

Hepatotoxicity:

- Hepatotoxicity, liver failure and death have occurred in Iclusig-treated patients. Monitor hepatic function. Interrupt Iclusig if hepatotoxicity is suspected (2.3, 5.3).

1 INDICATIONS AND USAGE

Iclusig (ponatinib) is a kinase inhibitor indicated for the:

- Treatment of adult patients with T315I-positive chronic myeloid leukemia (CML) (chronic phase, accelerated phase, or blast phase) or T315I-positive Philadelphia chromosome positive acute lymphoblastic leukemia (Ph+ ALL).
- Treatment of adult patients with chronic phase, accelerated phase, or blast phase chronic myeloid leukemia or Ph+ ALL for whom no other tyrosine kinase inhibitor (TKI) therapy is indicated.

These indications are based upon response rate [see *Clinical Studies (14)*]. There are no trials verifying an improvement in disease-related symptoms or increased survival with Iclusig.

Limitations of use:

Iclusig is not indicated and is not recommended for the treatment of patients with newly diagnosed chronic phase CML [see *Warnings and Precautions (5.6)*].

2 DOSAGE AND ADMINISTRATION

2.1 Recommended Dosing

The optimal dose of Iclusig has not been identified. In clinical trials, the starting dose of Iclusig was 45 mg administered orally once daily. However, 59% of the patients required dose reductions to 30 mg or 15 mg once daily during the course of therapy.

Start dosing with 45 mg once daily. Consider reducing the dose of Iclusig for chronic phase (CP) CML and accelerated phase (AP) CML patients who have achieved a major cytogenetic response.

Consider discontinuing Iclusig if response has not occurred by 3 months (90 days).

Iclusig may be taken with or without food. Tablets should be swallowed whole.

2.2 Dose Modifications for Myelosuppression

Suggested dose modifications for neutropenia (ANC* less than $1.0 \times 10^9/L$) and thrombocytopenia (platelet less than $50 \times 10^9/L$) that are unrelated to leukemia are summarized in Table 1.

Table 1: Suggested Dose Modifications for Myelosuppression

ANC* < $1 \times 10^9/L$ or platelet < $50 \times 10^9/L$	First occurrence:
	Second occurrence:
	Third occurrence:

- Interrupt Iclusig and resume initial 45 mg dose after recovery to ANC $\geq 1.5 \times 10^9/L$ and platelet $\geq 75 \times 10^9/L$
- Interrupt Iclusig and resume at 30 mg after recovery to ANC $\geq 1.5 \times 10^9/L$ and platelet $\geq 75 \times 10^9/L$
- Interrupt Iclusig and resume at 15 mg after recovery to ANC $\geq 1.5 \times 10^9/L$ and platelet $\geq 75 \times 10^9/L$

*ANC = absolute neutrophil count

2.3 Dose Modifications for Non-Hematologic Adverse Reactions

If a serious non-hematologic adverse reaction occurs, modify the dose or interrupt treatment. Do not restart Iclusig in patients with arterial or venous occlusive reactions unless the potential benefit outweighs the risk of recurrent arterial or venous occlusions and the patient has no other treatment options. For serious reactions other than arterial or venous occlusion, do not restart Iclusig until the serious event has resolved or the potential benefit of resuming therapy is judged to outweigh the risk.

Hepatic Toxicity

Recommended modifications for hepatic toxicity are summarized in Table 2.

Table 2: Recommended Dose Modifications for Hepatic Toxicity

Elevation of liver transaminase > 3 x ULN* (Grade 2 or higher)	<p>Occurrence at 45 mg:</p> <ul style="list-style-type: none"> • Interrupt Iclusig and monitor hepatic function • Resume Iclusig at 30 mg after recovery to ≤ Grade 1 (< 3 × ULN) <p>Occurrence at 30 mg:</p> <ul style="list-style-type: none"> • Interrupt Iclusig and resume at 15 mg after recovery to ≤ Grade 1 <p>Occurrence at 15 mg:</p> <ul style="list-style-type: none"> • Discontinue Iclusig
Elevation of AST or ALT ≥ 3 x ULN concurrent with an elevation of bilirubin > 2 x ULN and alkaline phosphatase < 2 x ULN	Discontinue Iclusig

*ULN = Upper Limit of Normal for the lab

Pancreatitis and Elevation of Lipase

Recommended modifications for pancreatic adverse reactions are summarized in Table 3.

Table 3: Recommended Dose Modifications for Pancreatitis and Elevation of Lipase

Asymptomatic Grade 1 or 2 elevation of serum lipase	Consider interruption or dose reduction of Iclusig
Asymptomatic Grade 3 or 4 elevation of lipase (> 2 x ULN*) or asymptomatic radiologic pancreatitis (Grade 2 pancreatitis)	<p>Occurrence at 45 mg:</p> <ul style="list-style-type: none"> • Interrupt Iclusig and resume at 30 mg after recovery to ≤ Grade 1 (< 1.5 x ULN) <p>Occurrence at 30 mg:</p> <ul style="list-style-type: none"> • Interrupt Iclusig and resume at 15 mg after recovery to ≤ Grade 1 <p>Occurrence at 15 mg:</p> <ul style="list-style-type: none"> • Discontinue Iclusig
Symptomatic Grade 3 pancreatitis	<p>Occurrence at 45 mg:</p> <ul style="list-style-type: none"> • Interrupt Iclusig and resume at 30 mg after complete resolution of symptoms and after recovery of lipase elevation to ≤ Grade 1 <p>Occurrence at 30 mg:</p> <ul style="list-style-type: none"> • Interrupt Iclusig and resume at 15 mg after complete resolution of symptoms and after recovery of lipase elevation to ≤ Grade 1 <p>Occurrence at 15 mg:</p> <ul style="list-style-type: none"> • Discontinue Iclusig
Grade 4 pancreatitis	Discontinue Iclusig

*ULN = Upper Limit of Normal for the lab

2.4 Dose Modification for Use With Strong CYP3A Inhibitors

The recommended dose should be reduced to 30 mg once daily when administering Iclusig with strong CYP3A inhibitors [see *Drug Interactions (7.1)*].

2.5 Dose Modification for Use in Patients with Hepatic Impairment

The recommended starting dose is 30 mg once daily in patients with hepatic impairment (Child-Pugh A, B, or C) [see Use in Specific Populations (8.6), and Clinical Pharmacology (12.3)].

3 DOSAGE FORMS AND STRENGTHS

15 mg, 30 mg and 45 mg round, white, film-coated tablets.

4 CONTRAINDICATIONS

None.

5 WARNINGS AND PRECAUTIONS

5.1 Vascular Occlusion

Arterial and venous thrombosis and occlusions, including fatal myocardial infarction, stroke, stenosis of large arterial vessels of the brain, severe peripheral vascular disease, and the need for urgent revascularization procedures have occurred in at least 27% of Iclusig-treated patients from the phase 1 and phase 2 trials. Iclusig can cause fatal and life-threatening vascular occlusion within 2 weeks of starting treatment. Iclusig can also cause recurrent or multi-site vascular occlusion.

In the dose-escalation (phase 1) clinical trial, 49% (32/65) of patients with CML or Ph+ ALL developed vascular occlusive events. The median time to onset of the first vascular occlusion event was 5 months. Iclusig can cause fatal and life-threatening vascular occlusion in patients treated at dose levels as low as 15 mg per day.

Patients with and without cardiovascular risk factors, including patients age 50 years or younger, experienced these events. Vascular occlusion adverse events were more frequent with increasing age and in patients with prior history of ischemia, hypertension, diabetes, or hyperlipidemia (see Table 4).

Table 4: Vascular Occlusion Incidence in Iclusig-Treated Patients in Phase 2 Trial According to Risk Categories

	Prior history of ischemia, hypertension, diabetes, or hyperlipidemia	No history of ischemia, hypertension, diabetes, or hyperlipidemia
Age: 49 or younger	18% (6/33)	12% (13/112)
Age: 50 to 74 years	33% (50/152)	18% (21/114)
Age: 75 and older	56% (14/25)	46% (6/13)
All age groups	33% (70/210)	16% (39/239)
Total	24% (110/449)	

Arterial Occlusion and Thrombosis

Arterial occlusion and thrombosis occurred in at least 20% (92/449) of Iclusig-treated patients with some patients experiencing events of more than one type. Patients have required revascularization procedures (cerebrovascular, coronary, and peripheral arterial) due to vascular occlusion from Iclusig.

Cardiac vascular occlusion, including fatal and life-threatening myocardial infarction and coronary artery occlusion has occurred in 12% (55/449) of Iclusig-treated patients. Patients have developed heart failure concurrent or subsequent to the myocardial ischemic event.

Cerebrovascular occlusion, including fatal stroke, has occurred in 6% (27/449) of Iclusig-treated patients. Iclusig can cause stenosis over multiple segments in major arterial vessels that supply the brain (e.g., carotid, vertebral, middle cerebral artery).

Peripheral arterial occlusive events, including fatal mesenteric artery occlusion and life-threatening peripheral arterial disease, have occurred in 8% (38/449) of Iclusig-treated patients. Patients have developed digital or distal extremity necrosis and have required amputations. Renal artery stenosis, associated with worsening, labile or treatment-resistant hypertension, has occurred in some Iclusig-treated patients [see *Warnings and Precautions (5.4)*].

Clinicians should consider whether the benefits of Iclusig treatment are expected to exceed the risks of therapy. In patients suspected of developing arterial thrombotic events, interrupt or stop Iclusig. A benefit-risk consideration should guide a decision to restart Iclusig therapy. [see *Dosage and Administration (2.3)*].

Venous Thromboembolism

Venous thromboembolic events occurred in 5% (23/449) of Iclusig-treated patients, including deep venous thrombosis (8 patients), pulmonary embolism (6 patients), superficial thrombophlebitis (3 patients), and retinal vein thrombosis (2 patients). Consider dose modification or discontinuation of Iclusig in patients who develop serious venous thromboembolism [see *Dosage and Administration (2.3)*].

5.2 Heart Failure

Fatal and serious heart failure or left ventricular dysfunction occurred in 5% of Iclusig-treated patients (N =22). Eight percent of patients (N= 35) experienced any grade of heart failure or left ventricular dysfunction. Monitor patients for signs or symptoms consistent with heart failure and treat as clinically indicated, including interruption of Iclusig. Consider discontinuation of Iclusig in patients who develop serious heart failure [see *Dosage and Administration (2.3)*].

5.3 Hepatotoxicity

Iclusig can cause hepatotoxicity, including liver failure and death. Fulminant hepatic failure leading to death occurred in an Iclusig-treated patient within one week of starting Iclusig. Two additional fatal cases of acute liver failure also occurred. The fatal cases occurred in patients with blast phase (BP) CML or Ph+ ALL. Severe hepatotoxicity occurred in all disease cohorts.

The incidence of aspartate aminotransferase (AST) or alanine aminotransferase (ALT) elevation was 56% (all grades) and 8% (grade 3 or 4). Iclusig treatment may result in elevation in ALT, AST, or both. ALT or AST elevation was not reversed by the date of last follow-up in 5% of patients.

Monitor liver function tests at baseline, then at least monthly or as clinically indicated. Interrupt, reduce or discontinue Iclusig as clinically indicated [see *Dosage and Administration (2.3)*].

5.4 Hypertension

Treatment-emergent hypertension occurred in 67% of patients (300/449). Eight patients (2%) treated with Iclusig in clinical trials experienced treatment-emergent symptomatic hypertension as a serious adverse reaction, including hypertensive crisis. Patients may require urgent clinical intervention for hypertension associated with confusion, headache, chest pain, or shortness of breath [see *Adverse Reactions (6)*]. In patients with baseline systolic BP<140 mm Hg and baseline diastolic BP<90mm Hg, 78% (220/282) experienced treatment-emergent hypertension; 49% (139/282) developed Stage 1 hypertension (defined as systolic BP≥140 mm Hg or diastolic BP≥90 mm Hg) while 29% developed Stage 2 hypertension (defined as systolic BP≥160 mm Hg or diastolic BP≥100 mm Hg). In 131 patients with Stage 1 hypertension at baseline, 61% (80/131) developed Stage 2 hypertension. Monitor and manage blood pressure elevations during Iclusig use and treat hypertension to normalize blood pressure. Interrupt, dose reduce, or stop Iclusig if hypertension is not medically controlled. In the event of significant worsening, labile or treatment-resistant hypertension, interrupt treatment and consider evaluating for renal artery stenosis.

5.5 Pancreatitis

Clinical pancreatitis occurred in 6% (28/449) of patients (5% grade 3) treated with Iclusig. Pancreatitis resulted in discontinuation or treatment interruption in 6% of patients (25/449). Twenty-two of the 28 cases of pancreatitis resolved within 2 weeks with dose interruption or reduction. The incidence of treatment-emergent lipase elevation was 41%.

Check serum lipase every 2 weeks for the first 2 months and then monthly thereafter or as clinically indicated. Consider additional serum lipase monitoring in patients with a history of pancreatitis or alcohol abuse. Dose interruption or reduction may be required. In cases where lipase elevations are accompanied by abdominal symptoms, interrupt treatment with Iclusig and evaluate patients for pancreatitis [see *Dosage and Administration (2.3)*]. Do not consider restarting Iclusig until patients have complete resolution of symptoms and lipase levels are less than 1.5 x ULN.

5.6 Increased Toxicity in Newly Diagnosed Chronic Phase CML

In a prospective randomized clinical trial in the first line treatment of newly diagnosed patients with chronic phase (CP) CML, single agent Iclusig 45 mg once-daily increased the risk of serious adverse reactions 2-fold compared to single agent imatinib 400 mg once-daily. The median exposure to treatment was less than 6 months. The trial was halted for safety in October 2013.

Arterial and venous thrombosis and occlusions occurred at least twice as frequently in the Iclusig arm compared to the imatinib arm. Compared to imatinib-treated patients, Iclusig-treated patients exhibited a greater incidence of myelosuppression, pancreatitis, hepatotoxicity, cardiac failure, hypertension, and skin and subcutaneous tissue disorders. Iclusig is not indicated and is not recommended for the treatment of patients with newly diagnosed CP-CML.

5.7 Neuropathy

Peripheral and cranial neuropathy have occurred in Iclusig-treated patients. Overall, 13% (59/449) of Iclusig-treated patients experienced a peripheral neuropathy event of any grade (2%, grade 3/4). In clinical trials, the most common peripheral neuropathies reported were peripheral neuropathy (4%, 18/449), paresthesia (4%, 17/449), hypoesthesia (2%, 11/449), and hyperesthesia (1%, 5/449). Cranial neuropathy developed in 1% (6/449) of Iclusig-treated patients (<1% grade 3/4).

Of the patients who developed neuropathy, 31% (20/65) developed neuropathy during the first month of treatment. Monitor patients for symptoms of neuropathy, such as hypoesthesia, hyperesthesia, paresthesia, discomfort, a burning sensation, neuropathic pain or weakness. Consider interrupting Iclusig and evaluate if neuropathy is suspected.

5.8 Ocular Toxicity

Serious ocular toxicities leading to blindness or blurred vision have occurred in Iclusig-treated patients. Retinal toxicities including macular edema, retinal vein occlusion, and retinal hemorrhage occurred in 3% of Iclusig-treated patients. Conjunctival or corneal irritation, dry eye, or eye pain occurred in 13% of patients. Visual blurring occurred in 6% of patients. Other ocular toxicities include cataracts, glaucoma, iritis, iridocyclitis, and ulcerative keratitis. Conduct comprehensive eye exams at baseline and periodically during treatment [see *Adverse Reactions* (6)].

5.9 Hemorrhage

Serious bleeding events, including fatalities, occurred in 5% (22/449) of patients treated with Iclusig. Hemorrhage occurred in 24% of patients. The incidence of serious bleeding events was higher in patients with AP-CML, BP-CML, and Ph+ ALL. Cerebral hemorrhage and gastrointestinal hemorrhage were the most commonly reported serious bleeding events. Most hemorrhagic events, but not all, occurred in patients with grade 4 thrombocytopenia [see *Warnings and Precautions* (5.12)]. Interrupt Iclusig for serious or severe hemorrhage and evaluate [see *Dosage and Administration* (2.3)].

5.10 Fluid Retention

Fluid retention events judged as serious occurred in 3% (13/449) of patients treated with Iclusig. One instance of brain edema was fatal. Serious fluid retention events in more than 1 patient included: pericardial effusion (6/449, 1%), pleural effusion (5/449, 1%), and ascites (2/449, <1%).

In total, fluid retention occurred in 23% of the patients. The most common fluid retention events were peripheral edema (16%), pleural effusion (7%), and pericardial effusion (3%).

Monitor patients for fluid retention and manage patients as clinically indicated. Interrupt, reduce, or discontinue Iclusig as clinically indicated [see *Dosage and Administration* (2.3)].

5.11 Cardiac Arrhythmias

Symptomatic bradyarrhythmias that led to a requirement for pacemaker implantation occurred in 1% (3/449) of Iclusig-treated patients. The cardiac rhythms (1 case each) identified were complete heart block, sick sinus syndrome, and atrial fibrillation with bradycardia and pauses. Advise patients to report signs and symptoms suggestive of slow heart rate (fainting, dizziness, or chest pain). Interrupt Iclusig and evaluate.

Supraventricular tachyarrhythmias occurred in 5% (25/449) of Iclusig-treated patients. Atrial fibrillation was the most common supraventricular tachyarrhythmia and occurred in 20 patients. The other supraventricular tachyarrhythmias were atrial flutter (4 patients), supraventricular tachycardia (4 patients), and atrial tachycardia (1 patient). For 13 patients, the event led to hospitalization. Advise patients to report signs and symptoms of rapid heart rate (palpitations, dizziness). Interrupt Iclusig and evaluate.

5.12 Myelosuppression

Severe (grade 3 or 4) myelosuppression occurred in 48% (215/449) of patients treated with Iclusig. The incidence of these events was greater in patients with AP-CML, BP-CML, and Ph+ ALL than in patients with CP-CML. Obtain complete blood counts every 2 weeks for the first 3 months and then monthly or as clinically indicated, and adjust the dose as recommended [see *Dosage and Administration* (2.2)].

5.13 Tumor Lysis Syndrome

Two patients (<1%) treated with Iclusig developed serious tumor lysis syndrome. Both cases occurred in patients with advanced CML. Hyperuricemia occurred in 7% (30/449) of patients; the majority had CP-CML (19 patients). Due to the potential for tumor lysis syndrome in patients with advanced disease (AP-CML, BP-CML, or Ph+ ALL), ensure adequate hydration and treat high uric acid levels prior to initiating therapy with Iclusig.

5.14 Compromised Wound Healing and Gastrointestinal Perforation

No formal studies of the effect of Iclusig on wound healing have been conducted. Based on the mechanism of action [see *Clinical Pharmacology* (12.1)], Iclusig could compromise wound healing. Serious gastrointestinal perforation (fistula) occurred in one patient 38 days post-cholecystectomy.

Interrupt Iclusig for at least 1 week prior to major surgery. The decision when to resume Iclusig after surgery should be based on clinical judgment of adequate wound healing.

5.15 Embryo-Fetal Toxicity

Iclusig can cause fetal harm when administered to a pregnant woman based on its mechanism of action and findings in animals. Ponatinib caused embryo-fetal toxicity in rats at exposures lower than human exposures at the recommended human dose. If this drug is used during pregnancy, or if the patient becomes pregnant while taking this drug, the patient should be apprised of the potential hazard to the fetus. Advise women to avoid pregnancy while taking Iclusig [see *Use in Specific Populations* (8.1)].

6 ADVERSE REACTIONS

Because clinical trials are conducted under widely varying conditions, adverse reaction rates observed in the clinical trials of a drug cannot be directly compared with rates in the clinical trials of another drug and may not reflect the rates observed in clinical practice.

The following adverse reactions are discussed in greater detail in other sections of the prescribing information:

- Vascular Occlusion [see *Warnings and Precautions* (5.1)]
- Heart Failure [see *Dosage and Administration* (2.3) and *Warnings and Precautions* (5.2)]
- Hepatotoxicity [see *Dosage and Administration* (2.3) and *Warnings and Precautions* (5.3)]
- Hypertension [see *Warnings and Precautions* (5.4)]
- Pancreatitis [see *Dosage and Administration* (2.3) and *Warnings and Precautions* (5.5)]
- Increased Toxicity in Newly Diagnosed Chronic Phase CML [see *Warnings and Precautions* (5.6)]
- Neuropathy [see *Warnings and Precautions* (5.7)]
- Ocular Toxicity [see *Warnings and Precautions* (5.8)]
- Hemorrhage [see *Warnings and Precautions* (5.9)]
- Fluid Retention [see *Warnings and Precautions* (5.10)]
- Cardiac Arrhythmias [see *Warnings and Precautions* (5.11)]
- Myelosuppression [see *Dosage and Administration* (2.2) and *Warnings and Precautions* (5.12)]

Clinical Trial Experience

Previously Treated CML or Ph+ ALL

The adverse reactions described in this section were identified in a single-arm, open-label, international, multicenter trial in 449 patients with CML or Ph+ ALL whose disease was considered to be resistant or intolerant to prior tyrosine kinase inhibitor (TKI) therapy including those with the BCR-ABL T315I mutation. All patients received a starting dose of 45 mg Iclusig once daily. At the time of analysis, the median duration of treatment with Iclusig was 337 days in patients with CP-CML, 362 days in patients with AP-CML, 89 days in patients with BP-CML, and 81 days in patients with Ph+ ALL. The median dose intensity was 37 mg or 83% of the expected 45 mg dose. The events of arterial ischemia, cardiac failure, and peripheral neuropathy reported in Tables 5 and 6 below include data from an additional 13 months of follow-up (median duration of treatment CP-CML: 672 days, AP-CML: 590 days, BP-CML: 89 days, Ph+ ALL: 81 days).

Adverse reactions reported in more than 10% of all patients treated with Iclusig in this trial are presented in Table 5. Overall, the most common non-hematologic adverse reactions ($\geq 20\%$) were hypertension, rash, abdominal pain, fatigue, headache, dry skin, constipation, arthralgia, nausea, and pyrexia.

The rates of treatment-emergent adverse events resulting in discontinuation were 13% in CP-CML, 11% in AP-CML, 15% in BP-CML, and 9% in Ph+ ALL. The most common adverse events that led to treatment discontinuation were thrombocytopenia (4%) and infections (1%).

Dose modifications (dose delays or dose reductions) due to adverse reactions occurred in 74% of the patients. The most common adverse reactions ($\geq 5\%$) that led to dose modifications include thrombocytopenia (30%), neutropenia (13%), lipase increased (12%), rash (11%), abdominal pain (11%), pancreatitis (6%), and ALT, AST, or GGT increased (6%).

Table 5: Adverse Reactions Occurring in $>10\%$ of Patients, Any Group

Body System	CP-CML (N=270)		AP-CML (N=85)		BP-CML (N=62)		Ph+ ALL (N=32)	
	Any Grade (%)	Grade 3 / 4 (%)	Any Grade (%)	Grade 3 / 4 (%)	Any Grade (%)	Grade 3 / 4 (%)	Any Grade (%)	Grade 3 / 4 (%)
Cardiac or Vascular disorders								
Hypertension (a)	68	39	71	36	65	26	53	31
Arterial ischemia (b)*	20	11	19	9	10	5	3	0
Cardiac Failure (c)*	7	4	6	4	15	8	6	3
Gastrointestinal disorders								
Abdominal pain (d)	49	10	40	8	34	6	44	6
Constipation	37	2	24	2	26	0	47	3
Nausea	23	1	27	0	32	2	22	0
Diarrhea	16	1	26	0	18	3	13	3
Vomiting	13	2	24	0	23	2	22	0
Oral mucositis (e)	10	1	15	1	23	0	9	3
GI hemorrhage (f)	2	<1	8	1	11	5	9	6
Blood and lymphatic system disorders								
Febrile neutropenia	1	<1	4	4	11	11	25	25
Infections and infestations								
Sepsis	1	1	5	5	8	8	22	22
Pneumonia	3	2	11	9	13	11	9	3
Urinary tract infection	7	1	12	1	0	0	9	0
Upper respiratory tract infection	11	1	8	0	11	2	0	0
Nasopharyngitis	9	0	12	0	3	0	3	0
Cellulitis	2	1	4	2	11	3	0	0
Nervous system disorders								
Headache	39	3	28	0	31	3	25	0
Peripheral neuropathy (g)*	16	2	11	1	8	0	6	0
Dizziness	11	0	5	0	5	0	3	0
Respiratory, thoracic, and mediastinal disorders								
Pleural effusion	3	1	11	2	13	0	19	3
Cough	12	0	17	0	18	0	6	0
Dyspnea	11	2	15	2	21	7	6	0
Skin and subcutaneous tissue disorders								
Rash and related conditions	54	5	48	8	39	5	34	6
Dry skin	39	2	27	1	24	2	25	0
Musculoskeletal and connective tissue disorders								
Arthralgia	26	2	31	1	19	0	13	0
Myalgia	22	1	20	0	16	0	6	0

Table 5: Adverse Reactions Occurring in >10% of Patients, Any Group

	CP-CML (N=270)		AP-CML (N=85)		BP-CML (N=62)		Ph+ ALL (N=32)	
Pain in extremity	17	2	17	0	13	0	9	0
Back pain	15	1	11	2	16	2	13	0
Muscle spasms	12	0	5	0	5	0	13	0
Bone pain	12	<1	12	1	11	3	9	3
General disorders and administration site conditions								
Fatigue or asthenia	39	3	36	6	35	5	31	3
Pyrexia	23	1	31	5	32	3	25	0
Edema, peripheral	13	<1	19	0	13	0	22	0
Pain	8	<1	7	0	16	3	6	3
Chills	7	0	11	0	13	2	9	0
Metabolism and nutrition disorders								
Decreased appetite	8	<1	12	1	8	0	31	0
Investigations								
Weight decreased	6	<1	7	0	5	0	13	0
Psychiatric disorders								
Insomnia	7	0	12	0	8	0	9	0

Adverse drug reactions, reported using MedDRA and graded using NCI-CTC-AE v 4.0 (NCI Common Terminology Criteria for Adverse Events) for assessment of toxicity.

Treatment-emergent, all causality events

(a) derived from blood pressure (BP) measurement recorded monthly while on trial

(b) includes cardiovascular, cerebrovascular, and peripheral vascular ischemia

(c) includes cardiac failure, cardiac failure congestive, cardiogenic shock, cardiopulmonary failure, ejection fraction decreased, pulmonary edema, right ventricular failure

(d) includes abdominal pain, abdominal pain upper, abdominal pain lower, abdominal discomfort

(e) includes aphthous stomatitis, lip blister, mouth ulceration, oral mucosal eruption, oral pain, oropharyngeal pain, pharyngeal ulceration, stomatitis, tongue ulceration

(f) includes gastric hemorrhage, gastric ulcer hemorrhage, hemorrhagic gastritis, gastrointestinal hemorrhage, hematemesis, hematochezia, hemorrhoidal hemorrhage, intra-abdominal hemorrhage, melena, rectal hemorrhage, and upper gastrointestinal hemorrhage

(g) includes burning sensation, skin burning sensation, hyperesthesia, hypoesthesia, neuralgia, neuropathy peripheral, paresthesia, peripheral sensorimotor neuropathy, peripheral motor neuropathy, peripheral sensory neuropathy, polyneuropathy

* represents an additional 13 months of follow-up

Table 6: Serious Adverse Reactions (SAR)

	N (%)
Cardiovascular disorders	
Arterial ischemic event*	53 (11.8%)
Cardiovascular	28 (6.2%)
Cerebrovascular	18 (4.0%)
Peripheral vascular	16 (3.6%)
Hemorrhage	22 (4.9%)
CNS hemorrhage	10 (2.2%)
Gastrointestinal hemorrhage	10 (2.2%)
Cardiac failure*	22 (4.9%)
Effusions(a)	13 (2.9%)
Atrial fibrillation	11 (2.4%)
Venous thromboembolism	10 (2.2%)
Hypertension	8 (1.8%)
Gastrointestinal disorders	
Pancreatitis	23 (5.1%)
Abdominal pain	17 (3.8%)
Blood and lymphatic system disorders	
Febrile neutropenia	13 (2.9%)
Thrombocytopenia	13 (2.9%)

Anemia	12 (2.7%)
Infections	
Pneumonia	24 (5.3%)
Sepsis	11 (2.4%)
General	
Pyrexia	14 (3.1%)

(a) includes pericardial effusion, pleural effusion, and ascites
* represents an additional 13 months of follow-up

Laboratory Abnormalities

Myelosuppression was commonly reported in all patient populations. The frequency of grade 3 or 4 thrombocytopenia, neutropenia, and anemia was higher in patients with AP-CML, BP-CML, and Ph+ ALL than in patients with CP-CML (see Table 7).

Table 7: Incidence of Clinically Relevant Grade 3/4* Hematologic Abnormalities

Laboratory Test	CP-CML (N=270) (%)	AP-CML (N=85) (%)	BP-CML (N=62) (%)	Ph+ ALL (N=32) (%)
Hematology				
Thrombocytopenia (platelet count decreased)	36	47	57	47
Neutropenia (ANC decreased)	24	51	55	63
Leukopenia (WBC decreased)	14	35	53	63
Anemia (Hgb decreased)	9	26	55	34
Lymphopenia	10	26	37	22

ANC=absolute neutrophil count, Hgb=hemoglobin, WBC=white blood cell count
*Reported using NCI-CTC-AE v 4.0

Table 8: Incidence of Clinically Relevant Non-Hematologic Laboratory Abnormalities

Laboratory Test	Safety Population N=449	
	Any Grade* (%)	CTCAE Grade 3/4 (%)
Liver function tests		
ALT increased	53	8
AST increased	41	4
Alkaline phosphatase increased	37	2
Albumin decreased	28	1
Bilirubin increased	19	1
Pancreatic enzymes		
Lipase increased	41	15
Amylase increased	3	<1
Chemistry		
Glucose increased	58	6
Phosphorus decreased	57	8
Calcium decreased	52	1
Sodium decreased	29	5
Glucose decreased	24	0
Potassium decreased	16	2
Potassium increased	15	2
Sodium increased	10	<1
Bicarbonate decreased	11	<1
Creatinine increased	7	<1
Calcium increased	5	0

Laboratory Test	Safety Population N=449	
	Any Grade* (%)	CTCAE Grade 3/4 (%)
Triglycerides increased	3	<1

ALT=alanine aminotransferase, AST=aspartate aminotransferase.

*Graded using NCI-CTC-AE v 4.0

7 DRUG INTERACTIONS

Based on *in vitro* studies, ponatinib is a substrate of CYP3A and to a lesser extent CYP2C8 and CYP2D6. Ponatinib also inhibits the P-glycoprotein (P-gp), ATP-binding cassette G2 (ABCG2) [also known as BCRP], and bile salt export pump (BSEP) transporter systems *in vitro* [see *Clinical Pharmacology* (12.3)].

7.1 Drugs That Are Strong Inhibitors of CYP3A Enzymes

In a drug interaction study in healthy volunteers, co-administration of Iclusig with ketoconazole increased plasma ponatinib AUC_{0-inf} and C_{max} by 78% and 47%, respectively [see *Clinical Pharmacology* (12.3)]. When administering Iclusig with strong CYP3A inhibitors (e.g., boceprevir, clarithromycin, conivaptan, grapefruit juice, indinavir, itraconazole, ketoconazole, lopinavir/ritonavir, nefazodone, nelfinavir, posaconazole, ritonavir, saquinavir, telaprevir, telithromycin, voriconazole), the recommended starting dose should be reduced [see *Dosage and Administration* (2.4)]. Patients taking concomitant strong CYP3A inhibitors may be at increased risk for adverse reactions [see *Clinical Pharmacology* (12.3)].

7.2 Drugs That Are Strong Inducers of CYP3A Enzymes

Coadministration of strong CYP3A inducers (e.g., carbamazepine, phenytoin, rifampin, and St. John's Wort) with Iclusig should be avoided unless the benefit outweighs the risk of decreased ponatinib exposure. Monitor patients for reduced efficacy. Selection of concomitant medication with no or minimal CYP3A induction potential is recommended. In a drug interaction study in healthy volunteers, co-administration of Iclusig following multiple doses of rifampin resulted in decreased ponatinib AUC_{0-inf} and C_{max} values by 62% and 42%, respectively [see *Clinical Pharmacology* (12.3)].

7.3 Drugs That Elevate Gastric pH

Iclusig may be co-administered with gastric pH-elevating medications. In a drug interaction study in healthy volunteers, co-administration of Iclusig following multiple doses of lansoprazole resulted in a minimal (6%) decrease in ponatinib exposure. [see *Clinical Pharmacology* (12.3)].

8 USE IN SPECIFIC POPULATIONS

8.1 Pregnancy

Pregnancy Category D

Risk Summary

Based on its mechanism of action and findings in animals, Iclusig can cause fetal harm when administered to a pregnant woman. There are no adequate and well-controlled studies with Iclusig in pregnant women. Advise women to avoid becoming pregnant while taking Iclusig. If this drug is used during pregnancy, or if the patient becomes pregnant while taking this drug, the patient should be apprised of the potential hazard to a fetus.

Animal Data

Ponatinib was studied for effects on embryo-fetal development in pregnant rats given oral doses of 0.3, 1, and 3 mg/kg/day during organogenesis. At the maternally toxic dose of 3 mg/kg/day (equivalent to the AUC in patients receiving the recommended dose of 45 mg/day), ponatinib caused embryo-fetal toxicity as shown by increased resorptions, reduced body weight, external alterations, multiple soft tissue and skeletal alterations, and reduced ossification. Embryo-fetal toxicities also were observed at 1 mg/kg/day (approximately 24% the AUC in patients receiving the recommended dose) and involved multiple fetal soft tissue and skeletal alterations, including reduced ossification.

8.3 Nursing Mothers

It is unknown whether ponatinib is excreted in human milk. Because many drugs are excreted in human milk and because of the potential for serious adverse reactions in nursing infants from ponatinib, a decision should be made whether to discontinue nursing or to discontinue Iclusig, taking into account the importance of the drug to the mother.

8.4 Pediatric Use

The safety and efficacy of Iclusig in patients less than 18 years of age have not been established.

8.5 Geriatric Use

One hundred and fifty-five of 449 patients (35%) in the clinical trial of Iclusig were 65 years of age and over. In patients with CP-CML, patients of age ≥ 65 years had a lower major cytogenetic response rate (38%) as compared with patients < 65 years of age (64%). In patients with AP-CML, BP-CML, and Ph+ ALL, patients of age ≥ 65 years had a higher major hematologic response rate (47%) as compared with patients < 65 years of age (40%). Forty-six percent of patients ≥ 65 years had vascular occlusion events. Patients of age ≥ 65 years are more likely to experience adverse reactions including vascular occlusion, decreased platelet count, peripheral edema, increased lipase, dyspnea, asthenia, muscle spasms, and decreased appetite. In general, dose selection for an elderly patient should be cautious, reflecting the greater frequency of decreased hepatic, renal, or cardiac function, and of concomitant disease or other drug therapy.

8.6 Hepatic Impairment

Administer Iclusig at a dose of 30 mg once daily in patients with hepatic impairment (Child-Pugh A, B, or C). [*see Dosage and Administration (2.5) and Clinical Pharmacology (12.3)*].

In a single-dose (30 mg) pharmacokinetic (PK) study; compared to subjects with normal liver function, no major differences in ponatinib PK were observed in subjects with hepatic impairment (Child-Pugh A, B, or C). However, there was an increased overall incidence of adverse reactions (e.g., gastrointestinal disorders, including a case of severe pancreatitis) in the subjects with hepatic impairment following the single 30 mg dose compared to subjects with normal liver function. The safety of multiple ponatinib doses, or doses higher than 30 mg have not been studied in patients with hepatic impairment.

8.7 Renal Impairment

Iclusig has not been studied in patients with renal impairment. Although renal excretion is not a major route of ponatinib elimination, the potential for moderate or severe renal impairment to affect hepatic elimination has not been determined [*see Clinical Pharmacology (12.3)*].

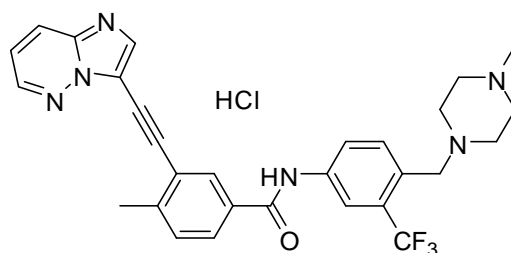
10 OVERDOSAGE

Overdoses with Iclusig were reported in clinical trials. One patient was accidentally administered the entire contents of a bottle of study medication via nasogastric tube. The investigator estimated that the patient received 540 mg of Iclusig. Two hours after the overdose, the patient had an uncorrected QT interval of 520 ms. Subsequent ECGs showed normal sinus rhythm with uncorrected QT intervals of 480 and 400 ms. The patient died 9 days after the overdose from pneumonia and sepsis. Another patient accidentally self-administered 165 mg on cycle 1 day 2. The patient experienced fatigue and non-cardiac chest pain on day 3. Multiple doses of 90 mg per day for 12 days in a patient resulted in pneumonia, systemic inflammatory response, atrial fibrillation, and a moderate pericardial effusion.

In the event of an overdose of Iclusig, stop Iclusig, observe the patient and provide appropriate supportive treatment.

11 DESCRIPTION

Iclusig (ponatinib) is a kinase inhibitor. The chemical name for ponatinib hydrochloride is 3-(imidazo[1,2-b]pyridazin-3-ylethynyl)-4-methyl-N-{4-[(4-methylpiperazin-1-yl)methyl]-3-(trifluoromethyl)phenyl}benzamide hydrochloride. The molecular formula is $C_{29}H_{28}ClF_3N_6O$ which corresponds to a formula weight of 569.02 g/mol. Its structure is shown below:



Ponatinib HCl is an off-white to yellow powder with pKa of 2.77 and 7.8. The solubility of ponatinib in pH 1.7, 2.7, and 7.5 buffers is 7790 mcg/ml, 3.44 mcg/ml, and 0.16 mcg/ml, respectively, indicating a decrease in solubility with increasing pH. Iclusig tablets are available as white, round, film-coated tablets for oral administration. Each tablet contains ponatinib hydrochloride equivalent to 15, 30 or 45 mg ponatinib with the following inactive ingredients: lactose monohydrate, microcrystalline cellulose, sodium starch glycolate (type B), colloidal silicon dioxide, magnesium stearate and a tablet coating. The tablet coating consists of talc, polyethylene glycol, polyvinyl alcohol, and titanium dioxide.

12 CLINICAL PHARMACOLOGY

12.1 Mechanism of Action

Ponatinib is a kinase inhibitor. Ponatinib inhibited the *in vitro* tyrosine kinase activity of ABL and T315I mutant ABL with IC_{50} concentrations of 0.4 and 2.0 nM, respectively. Ponatinib inhibited the *in vitro* activity of additional kinases with IC_{50} concentrations between 0.1 and 20 nM, including members of the VEGFR, PDGFR, FGFR, EPH receptors and SRC families of kinases, and KIT, RET, TIE2, and FLT3. Ponatinib inhibited the *in vitro* viability of cells expressing native or mutant BCR-ABL, including T315I. In mice, treatment with ponatinib reduced the size of tumors expressing native or T315I mutant BCR-ABL when compared to controls.

12.2 Pharmacodynamics

In a cell-based assay, ponatinib concentrations of 20 nM (10.65 ng/mL) were sufficient to suppress most BCR-ABL mutant clones. However, ponatinib concentrations of 40 nM (21.3 ng/mL) were required to suppress T315I mutants. The median and range of steady-state C_{max} and trough (C_{min}) concentrations of ponatinib following 29 days of once-daily dosing of 15 mg, 30 mg and 45 mg are listed in Table 9.

Table 9: Median, Maximum, and Minimum Ponatinib Exposure at Steady-State by Dose Group: PK Evaluable Population

Dose	Median C_{max} (Range) (nM)	Median C_{min} (Range) (nM)
15 mg QD (n = 8)	49 (23 – 105)	28 (11 – 68)
30 mg QD (n = 9)	125 (67 – 178)	54 (41 – 89)
45 mg QD (n = 21)	161 (64 – 336)	67 (22 – 137)

Concentrations of ponatinib shown in cell-based assays to suppress unmutated BCR-ABL and most mutant BCR-ABL clones may be achieved at once daily dosing of 15 mg or 30 mg.

The dose intensity-safety relationship indicated that there are significant increases in grade ≥ 3 adverse events (hypertension, thrombocytopenia, pancreatitis, neutropenia, rash, ALT increase, AST increase, lipase increase, myelosuppression) over the dose range of 15 to 45 mg once-daily.

In vitro, there was no significant inhibition of platelet aggregation with ponatinib at concentrations seen clinically and up to 0.7 $\mu\text{g/mL}$ (1.23 μM).

Cardiac Electrophysiology

A QT assessment was performed in 39 patients with cancer who received 30 mg, 45 mg, or 60 mg Iclusig once daily. No large changes in the mean QTc interval (i.e., > 20 msec) from baseline were detected in the study. However, a small increase in the mean QTc interval (i.e., < 10 msec) cannot be excluded because of study design limitations. In a phase 3 trial comparing ponatinib with imatinib, the mean change from baseline to worst QTcF value in ponatinib-treated patients (n=124) was < 10 msec.

12.3 Pharmacokinetics

The geometric mean (CV%) C_{\max} and $AUC_{(0-\tau)}$ of Iclusig 45 mg daily at presumed steady state in patients with advanced hematologic malignancies were 73 ng/mL (74%) and 1253 ng•hr/mL (73%), respectively. Ponatinib administered as an investigational capsule formulation to patients with cancer exhibited approximately dose proportional increases in both C_{\max} and AUC over the dose range of 15 to 60 mg. A dose intensity safety analysis showed a significant increase in grade 3 or higher adverse reactions (i.e., thrombocytopenia, neutropenia, rash, ALT elevation, AST elevation, pancreatitis, and lipase elevation) with an increase in dose intensity.

Absorption

The absolute bioavailability of ponatinib is unknown. Peak concentrations of ponatinib are observed within 6 hours after Iclusig oral administration. Following ingestion of either a high-fat or low-fat meal by 22 healthy volunteers, plasma ponatinib exposures (AUC and C_{\max}) were not different when compared to fasting conditions.

Distribution

Ponatinib is greater than 99% bound to plasma proteins *in vitro*. There was no plasma protein binding displacement of ponatinib (145 nM) *in vitro* by other highly protein bound medications (ibuprofen, nifedipine, propranolol, salicylic acid, and warfarin). The geometric mean (CV%) apparent steady state volume of distribution is 1223 liters (102%) following oral administration of Iclusig 45 mg once daily for 28 days in patients with cancer. Ponatinib is a weak substrate for both P-gp and ABCG2 *in vitro*. Ponatinib is not a substrate for organic anion transporting polypeptides (OATP1B1, OATP1B3) and organic cation transporter 1 (OCT1) *in vitro*.

Metabolism

At least 64% of a ponatinib dose undergoes phase I and phase II metabolism. CYP3A4 and to a lesser extent CYP2C8, CYP2D6 and CYP3A5 are involved in the phase I metabolism of ponatinib *in vitro*. Ponatinib is also metabolized by esterases and/or amidases.

Elimination

The geometric mean (range) terminal elimination half-life of ponatinib was approximately 24 (12 to 66) hours following Iclusig 45 mg oral administration once daily for 28 days in patients with cancer. Exposure increased by approximately 90% (median) [range: 20% to 440%] between the first dose and presumed steady state. Ponatinib is mainly eliminated via feces. Following a single oral dose of [¹⁴C]-labeled ponatinib, approximately 87% of the radioactive dose is recovered in the feces and approximately 5% in the urine.

Drug Interactions

Coadministration of Ponatinib and CYP3A Inhibitors

Coadministration of a single 15 mg oral dose of ponatinib in the presence of ketoconazole (400 mg daily), a strong CYP3A inhibitor, to 22 healthy volunteers, increased the $AUC_{0-\text{inf}}$ and C_{\max} of ponatinib by 78% and 47%, respectively, when compared to administration of ponatinib alone [see *Drug Interactions (7.1)*].

Coadministration of Ponatinib and CYP3A Inducers

Co-administration of a single 45 mg dose of ponatinib in the presence of rifampin (600 mg daily), a strong CYP3A inducer, to 19 healthy volunteers, decreased the $AUC_{0-\text{inf}}$ and C_{\max} of ponatinib by 62% and 42%, respectively, when compared to administration of ponatinib alone [see *Drug Interactions (7.2)*].

Coadministration With Other CYP Substrates

In vitro studies indicate that ponatinib does not inhibit the metabolism of substrates for CYP1A2, CYP2B6, CYP2C8, CYP2C9, CYP2C19, CYP3A, or CYP2D6 and does not induce the metabolism of substrates for CYP1A2, CYP2B6, or CYP3A.

Coadministration With Substrates of Transporters

In vitro, ponatinib is an inhibitor of P-gp and ABCG2, and BSEP.

In vitro, ponatinib did not inhibit the human organic anion transporting polypeptides OATP1B1 or OATP1B3, or the organic cation transporters OCT1, OCT2, OAT1, and OAT3.

Coadministration of Ponatinib and Gastric pH elevating Medications

The aqueous solubility of ponatinib is pH dependent, with higher pH resulting in lower solubility [see *Description (11)*]. Co-administration of a single 45 mg dose of ponatinib in the presence of lansoprazole (60 mg daily), a proton pump inhibitor, to 18 healthy volunteers decreased the AUC_{0-inf} and C_{max} of ponatinib by 6% and 25%, respectively, when compared to administration of ponatinib alone [see *Drug Interactions (7.3)*].

Pharmacokinetics in Specific Populations

Hepatic Impairment

A single 30 mg oral dose of ponatinib was administered to subjects with normal liver function (N=8) and to subjects with mild [Child-Pugh A (N=6)], moderate [Child-Pugh B (N=6)], and severe [Child-Pugh C (N=4)] hepatic impairment. Compared to subjects with normal liver function, there was no trend of increased ponatinib exposure in subjects with hepatic impairment. There was an increased incidence of adverse reactions in patients with hepatic impairment compared to subjects with normal liver function [see *Dosage and Administration (2.5)* and *Use in Specific Populations (8.6)*].

Renal Impairment

Iclusig has not been studied in patients with renal impairment. Although renal excretion is not a major route of ponatinib elimination, the potential for moderate or severe renal impairment to affect hepatic elimination has not been determined [see *Use in Specific Populations (8.7)*].

13 NONCLINICAL TOXICOLOGY

13.1 Carcinogenesis, Mutagenesis, Impairment of Fertility

Carcinogenicity studies have not been performed with ponatinib.

Ponatinib was not mutagenic in a bacterial mutagenesis (Ames) assay, was not clastogenic in a chromosome aberration assay in human lymphocytes, nor was it clastogenic in an *in vivo* mouse micronucleus assay at oral doses up to 2000 mg/kg.

Ponatinib may impair male and female fertility. Fertility studies using ponatinib were not conducted. However, ponatinib effects on male and female reproductive organs observed during general toxicology studies included degeneration of epithelium of the testes in rats and monkeys and follicular atresia in the monkey ovary with associated endometrial atrophy. Effects seen in rats were at exposures approximating the AUC in patients receiving the recommended dose of 45 mg/day and in monkeys were approximately 4 times the AUC in patients.

14 CLINICAL STUDIES

The safety and efficacy of Iclusig in patients with CML and Ph+ ALL whose disease was considered to be resistant or intolerant to prior tyrosine kinase inhibitor (TKI) therapy were evaluated in a single-arm, open-label, international, multicenter trial. Efficacy results described below should be interpreted within the context of updated safety information [see *Boxed Warning, Dosage and Administration (2.1)*, and *Warnings and Precautions (5.1, 5.2)*]

All patients were administered a starting dose of 45 mg of Iclusig once daily. Patients were assigned to one of six cohorts based on disease phase (chronic phase CML [CP-CML]; accelerated phase CML [AP-CML]; or blast phase CML /Philadelphia-positive acute lymphoblastic leukemia [BP-CML/Ph+ ALL]), resistance or intolerance (R/I) to prior TKI therapy, and the presence of the T315I mutation.

Resistance in CP-CML while on prior TKI therapy, was defined as failure to achieve either a complete hematologic response (by 3 months), a minor cytogenetic response (by 6 months), or a major cytogenetic response (by 12 months). Patients with CP-CML who experienced a loss of response or development of a kinase domain mutation in the absence of a complete cytogenetic response or progression to AP-CML or BP-CML at any time on prior TKI therapy were also considered resistant. Resistance in AP-CML, BP-CML, and Ph+ ALL was defined as failure to achieve either a major hematologic response (by 3 months in AP-CML, and by 1 month in BP-CML and Ph+ ALL), loss of major hematologic response (at any time), or development of a kinase domain mutation in the absence of a complete major hematologic response while on prior TKI therapy.

Intolerance was defined as the discontinuation of prior TKI therapy due to toxicities despite optimal management in the absence of a complete cytogenetic response in patients with CP-CML or major hematologic response for patients with AP-CML, BP-CML, or Ph+ ALL.

The primary efficacy endpoint in CP-CML was major cytogenetic response (MCyR), which included complete and partial cytogenetic responses (CCyR and PCyR). The primary efficacy endpoint in AP-CML, BP-CML, and Ph+ ALL was major hematologic response (MaHR), defined as either a complete hematologic response (CHR) or no evidence of leukemia (NEL).

The trial enrolled 449 patients, of which 444 were eligible for efficacy analysis: 267 patients with CP-CML (R/I Cohort: n=203, T315I: n=64), 83 patients with AP-CML, 62 patients with BP-CML, and 32 patients with Ph+ ALL. Five patients were not eligible for efficacy analysis due to lack of confirmation of T315I mutation status, and these patients had not received prior dasatinib or nilotinib.

At the time of analysis, the median follow-up was 10 months (minimum of 6 months of follow-up for all ongoing patients). Baseline demographic characteristics are described in Table 10.

Table 10: Demographic and Disease Characteristics

Patient Characteristics at Entry	Efficacy Population N=444
Age	
Median, years (range)	59 (18 to 94)
Gender, n (%)	
Male	236 (53%)
Race, n (%)	
Asian	57 (13%)
Black or African American	25 (6%)
White	349 (79%)
Other	13 (3%)
ECOG Performance Status, n (%)	
ECOG=0 or 1	409 (92%)
Disease History	
Median time from diagnosis to first dose, years (range)	6.1 (0.3 to 28.5)
Resistant to Prior TKI Therapy, n (%)	374 (88%)
Presence of one or more BCR-ABL kinase domain mutations*	244 (55%)
Prior TKI therapy– number of prior approved TKIs, n (%)	
1	29 (7%)
2	166 (37%)
≥3	249 (56%)

*Of the patients with one or more BCR-ABL kinase domain mutations detected at entry, 37 unique mutations were detected.

At the time of analysis, the median duration of Iclusig treatment was 281 days in patients with CP-CML, 286 days in patients with AP-CML, 89 days in patients with BP-CML, and 81 days in patients with Ph+ ALL. Efficacy results are summarized in Table 11, and Table 12.

Table 11: Efficacy of Iclusig in Patients With Resistant or Intolerant Chronic Phase CML

	Overall (N=267)	Cohort	
		R/I Cohort (N=203)	T315I Cohort (N=64)
Cytogenetic Response			
Major ^a (MCyR) % (95% CI)	54% (48,60)	49% (42,56)	70% (58,81)
Complete (CCyR) % (95% CI)	44% (38,50)	37% (31,44)	66% (53,77)

^aPrimary endpoint for CP-CML Cohorts was MCyR, which combines both complete (no detectable Ph+ cells) and partial (1% to 35% Ph+ cells in at least 20 metaphases) cytogenetic responses.

In patients with CP-CML patients who achieved MCyR, the median time to MCyR was 84 days (range: 49 to 334 days). At the time of analysis, the median durations of MCyR had not yet been reached.

**Table 12: Efficacy of Iclusig in Patients With Resistant or Intolerant Advanced Disease
(includes R/I and T315I cohorts)**

	AP-CML Overall (N=83)	BP-CML Overall (N=62)	Ph+ ALL Overall (N=32)
Hematologic Response			
Major ^a (MaHR) % (95% CI)	52% (41,63)	31% (20,44)	41% (24,59)
Complete ^b (CHR) % (95% CI)	47% (33,55)	21% (12,33)	34% (19,53)

^a Primary endpoint for patients with AP-CML, BP-CML, and Ph+ ALL was MaHR, which combines complete hematologic responses and no evidence of leukemia.

^b CHR: WBC ≤ institutional ULN, ANC ≥1000/mm³, platelets ≥100,000/mm³, no blasts or promyelocytes in peripheral blood, bone marrow blasts ≤5%, <5% myelocytes plus metamyelocytes in peripheral blood, basophils <5% in peripheral blood, No extramedullary involvement (including no hepatomegaly or splenomegaly).

The median time to MaHR in patients with AP-CML, BP-CML, and Ph+ ALL was 21 days (range: 12 to 176 days), 29 days (range 12 to 113 days), and 20 days (range: 11 to 168 days), respectively. The median duration of MaHR for patients with AP-CML, BP-CML, and Ph+ ALL was 9.5 months (range: 1.1 to 17.7 months), 4.7 months (range: 1.8 to 14.1+ months), and 3.2 months (range: 1.8 to 8.8+ months), respectively.

16 HOW SUPPLIED/STORAGE AND HANDLING

Iclusig tablets are available in the following configurations:

Strength	NDC Number	Description	Presentation
15 mg	76189-535-30	round, white, film-coated tablets with debossed “A5” on one side and plain on the other side	30 tablets in a wide-mouth white high density polyethylene (HDPE) bottle with child resistant closures that incorporate an induction heat seal liner
	76189-535-60		60 tablets in a wide-mouth white high density polyethylene (HDPE) bottle with child resistant closures that incorporate an induction heat seal liner
	76189-535-80		180 tablets in a wide-mouth white high density polyethylene (HDPE) bottle with child resistant closures that incorporate an induction heat seal liner
30 mg	76189-533-30	round, white, film-coated tablets with debossed “C7” on one side and plain on the other side	30 tablets in a wide-mouth white high density polyethylene (HDPE) bottle with child resistant closures that incorporate an induction heat seal liner
45 mg	76189-534-30	round, white, film-coated tablets with debossed “AP4” on one side and plain on the other side	30 tablets in a wide-mouth white high density polyethylene (HDPE) bottle with child resistant closures that incorporate an induction heat seal liner
	76189-534-90		90 tablets in a wide-mouth white high density polyethylene (HDPE) bottle with child resistant closures that incorporate an induction heat seal liner

Iclusig tablets should be stored at 20° to 25°C (68° to 77°F); excursions permitted to 15° to 30° C (59° to 86° F) [see USP Controlled Room Temperature]. Keep away from children.

17 PATIENT COUNSELING INFORMATION

Advise the patient to read the FDA-Approved patient labeling (Medication Guide).

Advise patients of the following and provide a copy of the Medication Guide:

Vascular Occlusions

Inform patients that serious arterial thromboses (including arterial stenosis sometimes requiring revascularization) and venous thromboembolism events have occurred. Advise patients to immediately contact their health care provider with any symptoms suggestive of a blood clot such as chest pain, shortness of breath, weakness on one side of the body, speech problems, leg pain, or leg swelling [see *Warnings and Precautions* (5.1)].

Heart Failure and Cardiac Arrhythmias

Inform patients of the possibility of heart failure, and abnormally slow or fast heart rates. Advise patients to contact their health care provider if they experience symptoms such as shortness of breath, chest pain, palpitations, dizziness, or fainting [see *Warnings and Precautions* (5.2, 5.11)].

Hepatotoxicity

Inform patients of the possibility of developing liver function abnormalities and serious hepatic toxicity. Advise patients to immediately contact their health care provider if signs of liver failure occur, including jaundice, anorexia, bleeding or bruising [see *Warnings and Precautions* (5.3)].

Hypertension

Inform patients of the possibility of new or worsening of existing hypertension. Advise patients to contact their health care provider for elevated blood pressure or if symptoms of hypertension occur including headache, dizziness, chest pain, or shortness of breath [see *Warnings and Precautions* (5.4)].

Pancreatitis

Inform patients of the possibility of developing pancreatitis that may be accompanied by nausea, vomiting, abdominal pain, or abdominal discomfort, and to promptly report these symptoms [see *Warnings and Precautions* (5.5)].

Neuropathy

Inform patients of the possibility of developing peripheral or cranial neuropathy while being treated with Iclusig. Advise patients to report symptoms of neuropathy, such as hypoesthesia, hyperesthesia, paresthesia, discomfort, a burning sensation, neuropathic pain, or weakness [see *Warnings and Precautions* (5.7)].

Ocular Toxicity

Inform patients of the possibility of ocular toxicity while being treated with Iclusig. Advise patients to report symptoms of ocular toxicity, such as blurred vision, dry eye, or eye pain [see *Warnings and Precautions* (5.8)].

Hemorrhage

Inform patients of the possibility of serious bleeding and to immediately contact their health care provider with any signs or symptoms suggestive of hemorrhage such as unusual bleeding or easy bruising [see *Warnings and Precautions* (5.9)].

Fluid Retention

Inform patients of the possibility of developing fluid retention and to contact their health care provider for symptoms such as leg swelling, abdominal swelling, weight gain, or shortness of breath [see *Warnings and Precautions* (5.10)].

Myelosuppression

Inform patients of the possibility of developing low blood cell counts; inform patients to report immediately should fever develop, particularly in association with any suggestion of infection [see *Warnings and Precautions* (5.12)].

Compromised Wound Healing and Gastrointestinal Perforation

Advise patients to inform their health care provider if they plan to undergo a surgical procedure or had recent surgery [see *Warnings and Precautions* (5.14)].

Inform patients that cases of gastrointestinal perforation have been reported [see *Warnings and Precautions* (5.14)].

Embryo-Fetal Toxicity

Inform patients that Iclusig can cause fetal harm when administered to a pregnant woman. Advise women of the potential hazard to a fetus and to avoid becoming pregnant [*see Warnings and Precautions (5.15) and Use in Specific Populations (8.1)*].

Instructions for Taking Iclusig

Advise patients to take Iclusig exactly as prescribed and not to change their dose or to stop taking Iclusig unless they are told to do so by their health care provider. Iclusig may be taken with or without food. Iclusig tablets should be swallowed whole. Patients should not crush or dissolve the tablets.

Patients should not take two doses at the same time to make up for a missed dose.

Lactose

Inform patients that Iclusig contains 121 mg of lactose monohydrate in a 45 mg daily dose.

Manufactured for:

ARIAD Pharmaceuticals, Inc.

26 Landsdowne Street

Cambridge, MA 02139-4234

MEDICATION GUIDE
ICLUSIG[®] (eye-CLUE-sig)
(ponatinib)
tablets

What is the most important information I should know about Iclusig?

Iclusig can cause serious side effects, including:

Blood clots or blockage in your blood vessels (arteries and veins). Blood clots or blockage in your blood vessels may lead to heart attack, stroke, or death. A blood clot or blockage in your blood vessels can prevent proper blood flow to your heart, brain, bowels (intestines), legs, eyes, and other parts of your body. You may need emergency surgery or treatment in a hospital. Get medical help right away if you get any of the following symptoms:

- chest pain or pressure
- pain in your arms, legs, back, neck or jaw
- shortness of breath
- numbness or weakness on one side of your body
- leg swelling
- trouble talking
- headache
- dizziness
- severe stomach area pain
- decreased vision or loss of vision

Blood clots or blockage in your blood vessels can happen in people with or without risk factors for heart and blood vessel disease, including people 50 years of age or younger. These problems happen more often in people as they get older, and in people with a past history of decreased blood flow, high blood pressure, diabetes, or high levels of fats in the blood (hyperlipidemia).

Heart problems. Iclusig can cause heart problems, including heart failure which can be serious and may lead to death. Heart failure means your heart does not pump blood well enough. Iclusig can also cause irregular slow or fast heartbeats and heart attack. Your healthcare provider will check your heart function before and during your treatment with Iclusig. Get medical help right away if you get any of the following symptoms: shortness of breath, chest pain, fast or irregular heartbeats, dizziness, or feel faint.

Liver problems. Iclusig can cause liver problems, including liver failure, which can be severe and may lead to death. Your healthcare provider will do blood tests before and during your treatment with Iclusig to check for liver problems. Get medical help right away if you get any of these symptoms of liver problems during treatment:

- yellowing of your skin or the white part of your eyes (jaundice)
- dark “tea-colored” urine
- sleepiness
- loss of appetite

See “**What are the possible side effects of Iclusig?**” for information about side effects.

What is Iclusig?

Iclusig is a prescription medicine used to treat adults who have:

- a specific type of abnormal gene (T315I-positive) chronic phase, accelerated phase, or blast phase chronic myeloid leukemia (CML), or T315I-positive Philadelphia chromosome positive acute lymphoblastic leukemia (Ph+ ALL)
- chronic phase, accelerated phase, or blast phase CML or Ph+ ALL who cannot receive any other tyrosine kinase inhibitor (TKI) medicines

Iclusig is not for use to treat people with newly diagnosed chronic phase CML.

It is not known if Iclusig is safe and effective in children less than 18 years of age.

What should I tell my healthcare provider before taking Iclusig?

Before you take Iclusig, tell your healthcare provider if you:

- have a history of blood clots in your blood vessels (arteries or veins)
- have heart problems, including heart failure, irregular heartbeats, and QT prolongation
- have diabetes
- have a history of high cholesterol
- have liver problems
- have had inflammation of your pancreas (pancreatitis)
- have high blood pressure
- are pregnant or plan to become pregnant. Iclusig can harm your unborn baby. You should not become
- have bleeding problems
- plan to have any surgical procedures
- are lactose (milk sugar) intolerant. Iclusig tablets contain lactose.
- drink grapefruit juice
- have any other medical conditions

pregnant while taking Iclusig. Tell your healthcare provider right away if you become pregnant or plan to become pregnant.

- are breastfeeding or plan to breastfeed. It is not known if Iclusig passes into your breast milk. You and your healthcare provider should decide if you will take Iclusig or breastfeed. You should not do both.

Tell your healthcare provider about all the medicines you take, including prescription medicines and over-the-counter medicines, vitamins, and herbal supplements. Iclusig and other medicines may affect each other causing side effects.

Know the medicines you take. Keep a list of them to show your healthcare provider and pharmacist when you get a new medicine.

How should I take Iclusig?

- Take Iclusig exactly as your healthcare provider tells you to take it.
- Swallow Iclusig tablets whole. Do not crush or dissolve Iclusig tablets.
- You may take Iclusig with or without food.
- If you miss a dose of Iclusig, take your next dose at your regular time. Do not take 2 doses at the same time to make up for a missed dose.
- If you take too much Iclusig, call your healthcare provider or go to the nearest hospital emergency room right away.

What are the possible side effects of Iclusig?

Iclusig may cause serious side effects, including:

- See **“What is the most important information I should know about Iclusig?”**
- **High blood pressure.** Your blood pressure should be checked regularly and any high blood pressure should be treated while you are taking Iclusig. Tell your healthcare provider if you get headaches, dizziness, chest pain or shortness of breath.
- **Inflammation of the pancreas (pancreatitis).** Symptoms include sudden stomach-area pain, nausea, and vomiting. Your healthcare provider should do blood tests to check for pancreatitis during treatment with Iclusig.
- **Neuropathy.** Iclusig may cause damage to the nerves in your arms, brain, hands, legs, or feet (Neuropathy). Tell your healthcare provider if you get any of these symptoms during treatment with Iclusig:
 - muscle weakness, tingling, burning, pain, and loss of feeling in your hands and feet
 - double vision and other problems with eyesight, trouble moving the eye, drooping of part of the face, sagging or drooping eyelids
- **Effects on the eye.** Serious eye problems that can lead to blindness or blurred vision may happen with Iclusig. Tell your healthcare provider if you get any of the following symptoms: perceived flashes of light, light sensitivity, floaters, dry or itchy eyes, and eye pain. Your healthcare provider will monitor your vision before and during your treatment with Iclusig.
- **Severe bleeding.** Iclusig can cause bleeding which can be serious and may lead to death. Tell your healthcare provider if you get any signs of bleeding during treatment with Iclusig including:

○ vomiting blood or if your vomit looks like coffee-grounds	○ unusual vaginal bleeding
○ pink for brown urine	○ nose bleeds that happen often
○ red or black (looks like tar) stools	○ drowsiness or difficulty being awakened
○ coughing up blood or blood clots	○ confusion
○ unusual bleeding or bruising of your skin	○ headache
○ menstrual bleeding that is heavier than normal	○ change in speech
- **Fluid retention.** Your body may hold too much fluid (fluid retention). Tell your healthcare provider right away if you get any of these symptoms during treatment with Iclusig:
 - swelling of your hands, ankles, feet, face, or all over your body
 - weight gain
 - shortness of breath and cough
- **Low blood cell counts.** Iclusig may cause low blood cell counts. Your healthcare provider will check your blood counts regularly during treatment with Iclusig. Tell your healthcare provider right away if you have a fever or any signs of an infection while taking Iclusig.
- **Tumor Lysis Syndrome (TLS).** TLS is caused by a fast breakdown of cancer cells. TLS can cause you to have:
 - kidney failure and the need for dialysis treatment
 - an abnormal heartbeatYour healthcare provider may do blood tests to check for TLS.

- **Possible wound healing problems.** If you need to have a surgical procedure, tell your healthcare provider that you are taking Iclusig. You should stop taking Iclusig at least 1 week before any planned surgery.
- **A tear in your stomach or intestinal wall (perforation).** Tell your healthcare provider right away if you get:
 - severe pain in your stomach-area (abdomen)
 - swelling of the abdomen
 - high fever

The most common side effects of Iclusig include:

- | | | |
|-------------------------------|----------------|--------------|
| • skin rash | • headache | • fever |
| • stomach-area (abdomen) pain | • dry skin | • joint pain |
| • tiredness | • constipation | • nausea |

Your healthcare provider may change your dose, temporarily stop, or permanently stop treatment with Iclusig if you have certain side effects.

Tell your healthcare provider if you have any side effect that bothers you or that does not go away.

These are not all of the possible side effects of Iclusig. For more information, ask your healthcare provider or pharmacist.

Call your doctor for medical advice about side effects. You may report side effects to 1-800-FDA-1088.

How should I store Iclusig?

Store Iclusig at room temperature between 68°F to 77° (20°C and 25°C).

Keep Iclusig and all medicines out of the reach of children.

General information about the safe and effective use of Iclusig

Medicines are sometimes prescribed for purposes other than those listed in a Medication Guide. Do not use Iclusig for a condition for which it was not prescribed. Do not give Iclusig to other people, even if they have the same symptoms you have. It may harm them. You can ask your healthcare provider or pharmacist for information about Iclusig that is written for health professionals.

For more information, go to www.iclusig.com or call 1-855-552-7423.

What are the ingredients in Iclusig?

Active ingredient: ponatinib

Inactive ingredients: lactose monohydrate, microcrystalline cellulose, sodium starch glycolate (type B), colloidal silicon dioxide and magnesium stearate. The tablet coating consists of talc, polyethylene glycol, polyvinyl alcohol and titanium dioxide.

Manufactured for: ARIAD Pharmaceuticals, Inc., 26 Landsdowne Street, Cambridge, MA 02139-4234

This Medication Guide has been approved by the U.S. Food and Drug Administration.

Revised: June 2016

|