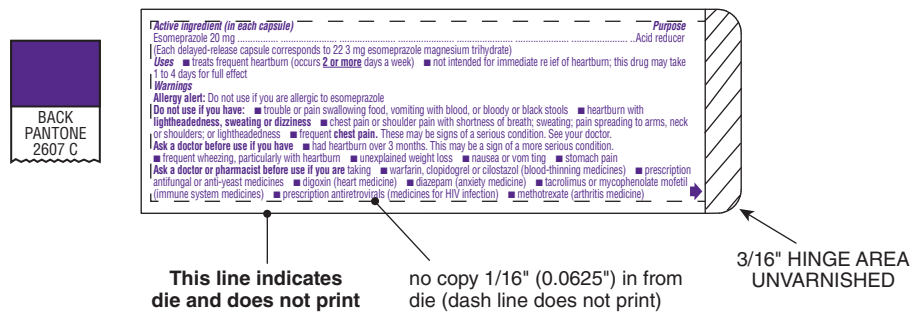
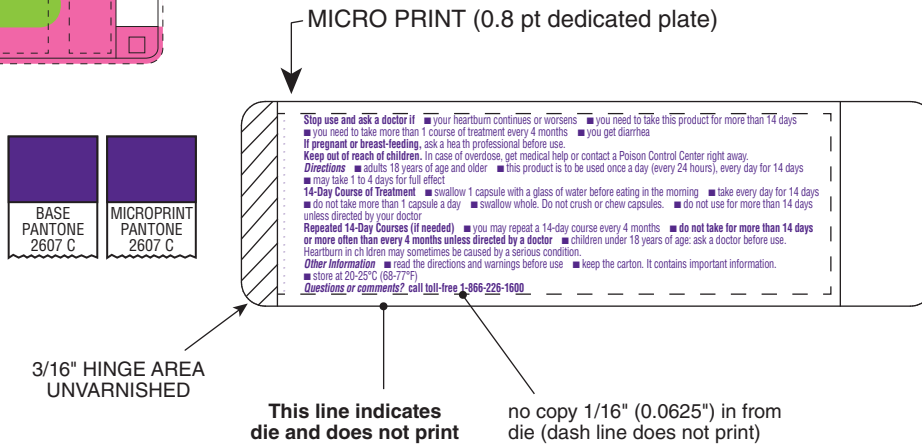




Gloss and Matt Varnish - Full size file on Varnish layer



PRODUCTION

(NOT COLOR ACCURATE)

Job Information	Color Legend
Date 21-NOV-2014 PASS # 1 Component # PAA056448 Drawing # (b)(4) 50013882v04	(b) (4)
Identification 	(b) (4)

DRUG FACTS TEXT DEFINED	TYPE SIZE
• HEADINGS	4.5 pt
• SUBHEADINGS/BODY TEXT	4.5 pt
• LEADING	4.5 pt
• BULLETS	3.5 pt
• SPACE BEFORE BULLET	2 ems
• WARNING BOX LINE, HAIRLINES	1 pt, .5 pt

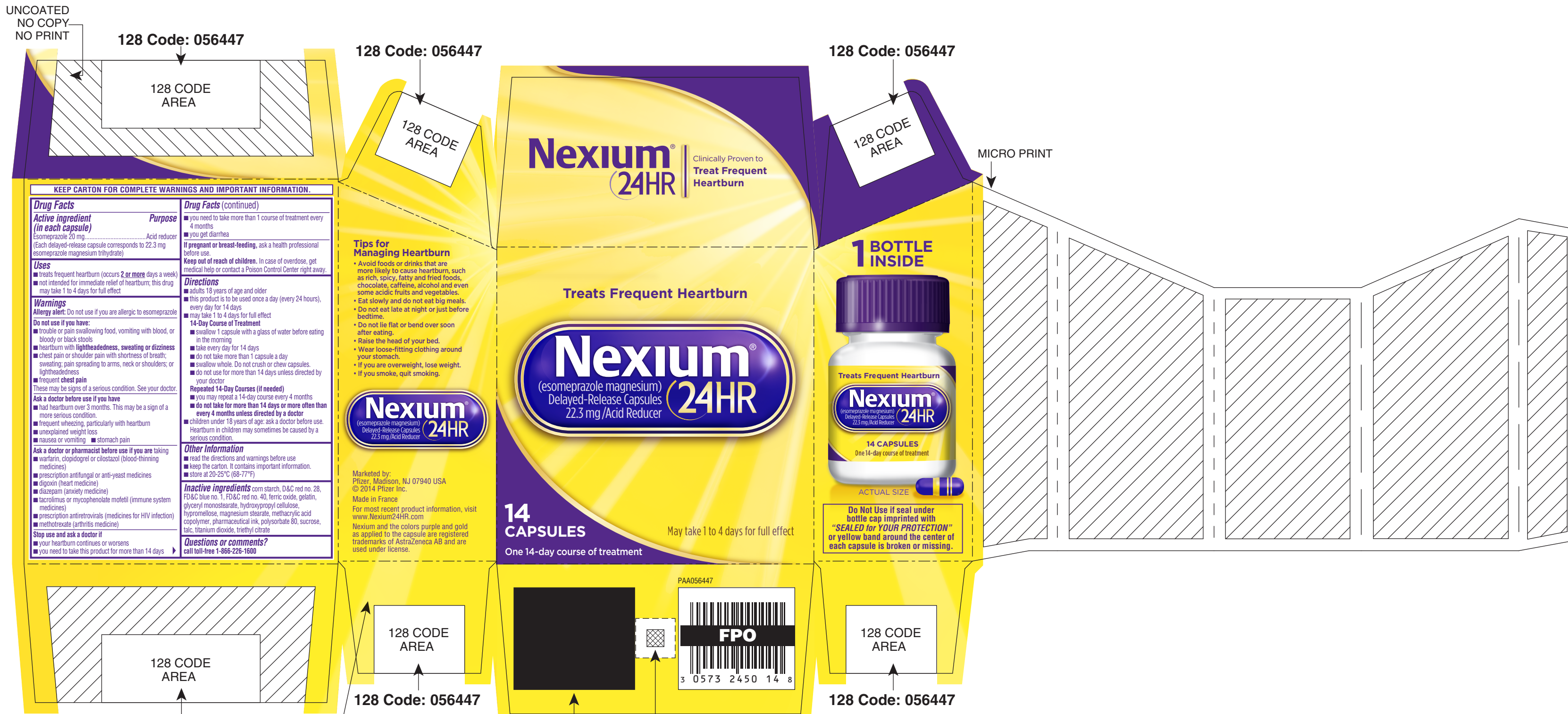


PRODUCTION

(NOT COLOR ACCURATE)

Job Information	Color Legend
Date 24-NOV-2014 PASS # 2 Component # PAA056698 Drawing # (b) (4) 50021037_v02	(b) (4)
Identification	
	(b) (4)

DRUG FACTS MODIFIED TEXT DEFINED	TYPE SIZE
• DRUG FACTS TITLE	8 pt
• DRUG FACTS CONTINUED	7 pt
• HEADINGS	7 pt
• SUBHEADINGS/BODY TEXT	6 pt
• LEADING	6.25 pt
• # OF CHARACTERS PER INCH	<39
• BULLETS	5 pt
• SPACE BEFORE BULLET	2 ems
• BARLINES, HAIRLINES	1.5 pt, .5 pt
• SPACE BETWEEN HAIRLINES AND BOX END	2 spaces



128 CODE AREA - SUBSET C 10 MIL DENSITY WITH 4 OR 6 DIGITS (CODE TO EXTEND TO EDGE OF FLAP - UNVARNISHED) PRINTED SIDE OF CARTON
128 Code: 056447

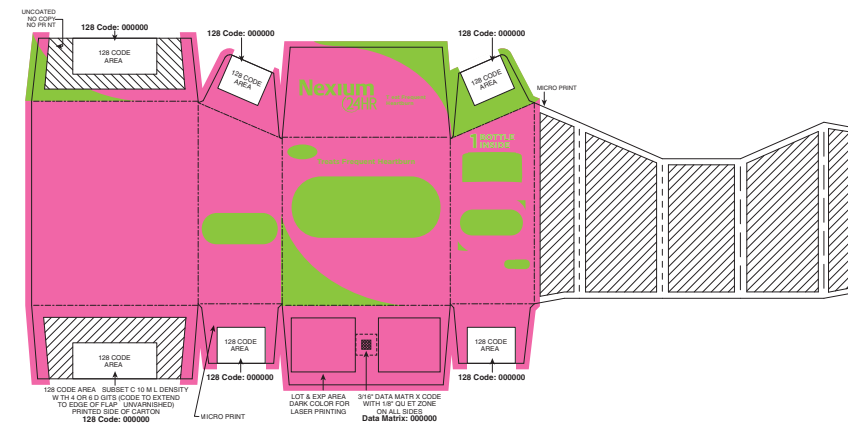
128 CODE: 056447
MICRO PRINT

LOT & EXP AREA. DARK COLOR FOR LASER PRINTING.

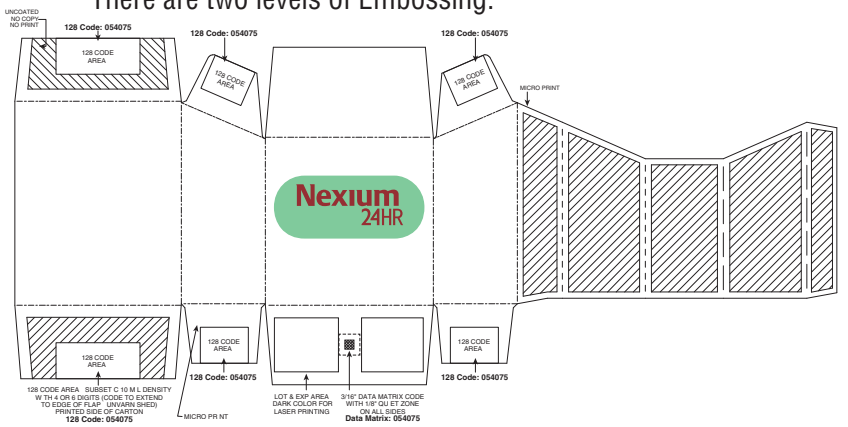
3/16" DATA MATRIX CODE WITH 1/8" QUIET ZONE ON ALL SIDES
Data Matrix: 056447

128 CODE: 056447

Gloss and Matt Varnish - Full size file on Varnish layer



Emboss - Full size file on Emboss layer*
* There are two levels of Embossing.



PRODUCTION (NOT COLOR ACCURATE)

Job Information	Color Legend
Date 20-NOV-2014 PASS # 1 Component # PAA056447 Drawing # (b) (4) 50013883v04	(b) (4)
Identification (b) (4)	

DRUG FACTS TEXT DEFINED	TYPE SIZE
• DRUG FACTS TITLE	9 pt
• DRUG FACTS CONTINUED	8 pt
• HEADINGS	8 pt
• SUBHEADINGS/BODY TEXT	6 pt
• LEADING	6.5 pt
• # OF CHARACTERS PER INCH	<39
• BULLETS	5 pt
• SPACE BEFORE BULLET	2 ems
• BARLINES, HAIRLINES	1.5 pt, .5 pt
• SPACE BETWEEN HAIRLINES AND BOX END	2 spaces

Treats Frequent Heartburn

Nexium[®]

(esomeprazole magnesium)
Delayed-Release Capsules **24HR**
22.3 mg/Acid Reducer

May take 1 to 4 days for full effect

2 Pack

28
CAPSULES

Two 14-day courses
of treatment

Inside bleed

Outside bleed

WHITE HOLDOUT
QUIET AREA

DATA MATRIX CODE
050549

REMOVE VARNISH
WHITE HOLDOUT
LOT/EXP

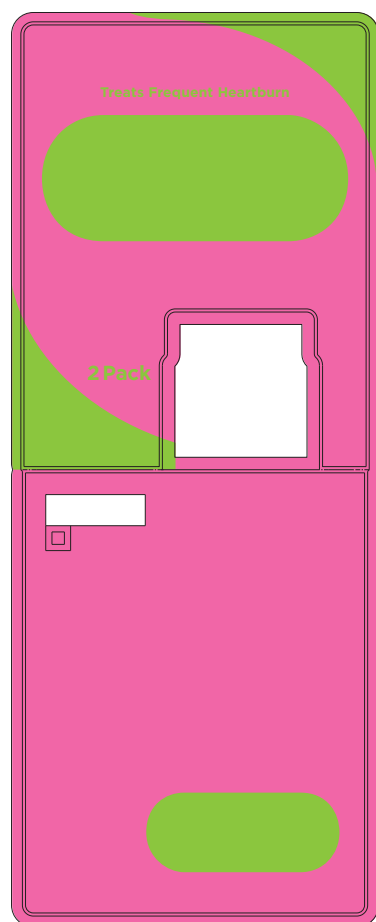
Marketed by: Pfizer, Madison, NJ 07940 USA
© 2014 Pfizer Inc.
Made in France
For most recent product information,
visit www.Nexium24HR.com
Nexium and the colors purple and gold as
applied to the capsule are registered trademarks
of AstraZenca AB and are used under license.



KEEP CARD FOR COMPLETE WARNINGS AND IMPORTANT INFORMATION.

<p>Drug Facts (continued)</p> <p>Purpose Esomeprazole 20 mg Acid reducer (Each delayed-release capsule corresponds to 22.3 mg esomeprazole magnesium trihydrate)</p> <p>Uses ■ treats frequent heartburn (occurs 2 or more days a week) ■ not intended for immediate relief of heartburn; this drug may take 1 to 4 days for full effect</p> <p>Warnings Allergy alert: Do not use if you are allergic to esomeprazole Do not use if you have: ■ trouble or pain swallowing food, vomiting with blood, or bloody or black stools ■ heartburn with lightheadedness, sweating or dizziness ■ chest pain or shoulder pain with shortness of breath; sweating; pain spreading to arms, neck or shoulders; or lightheadedness ■ frequent chest pain These may be signs of a serious condition. See your doctor. Ask a doctor before use if you have ■ had heartburn over 3 months. This may be a sign of a more serious condition. ■ frequent wheezing, particularly with heartburn ■ unexplained weight loss ■ nausea or vomiting ■ stomach pain</p> <p>Ask a doctor or pharmacist before use if you are taking ■ warfarin, clopidogrel or clostazotol (blood-thinning medicines) ■ prescription antifungal or anti-yeast medicines ■ digoxin (heart medicine) ■ dexamethasone (steroid) ■ tacrolimus or mycophenolate mofetil (immune system medicines) ■ prescription antiretrovirals (medicines for HIV infection) ■ methotrexate (arthritis medicine)</p> <p>Stop use and ask a doctor if ■ your heartburn continues or worsens ■ you need to take this product for more than 14 days</p> <p>Questions or comments? call toll-free 1-866-226-1600</p>	<p>Other Information ■ store at 20-25°C (68-77°F) ■ keep the card. It contains important information. ■ read the directions and warnings before use</p> <p>Inactive ingredients corn starch, D&C red no. 28, FD&C blue no. 1, FD&C red no. 40, ferric oxide, gelatin, glyceryl monostearate, hydroxypropyl cellulose, hypromellose, magnesium stearate, methacrylic acid copolymer, pharmaceutical ink, polysorbate 80, sucrose, talc, titanium dioxide, triethyl citrate</p>
<p>14-Day Course of Treatment ■ take every day for 14 days ■ swallow 1 capsule with a glass of water before eating in the morning</p> <p>14-Day Course of Treatment ■ take every day for 14 days ■ do not take more than 1 capsule a day ■ do not take more than 14 days unless directed by your doctor ■ do not use for more than 14 days unless directed by your doctor ■ you may repeat a 14-day course every 4 months ■ do not take for more than 14 days or more often than every 4 months unless directed by a doctor</p> <p>■ children under 18 years of age: ask a doctor before use. Heartburn in children may sometimes be caused by a serious condition.</p>	<p>Directions ■ this product is to be used once a day (every 24 hours), every day for 14 days ■ take 1 to 4 days for full effect</p> <p>Keep out of reach of children. In case of overdose, get medical help or contact a Poison Control Center right away.</p> <p>Drug Facts (continued) ■ you need to take more than 1 course of treatment every 4 months ■ you get diarrhea ■ if pregnant or breast-feeding, ask a health professional before use.</p>

Gloss and Matte Varnish -
Full size file on Varnish layers



Tips for Managing Heartburn

- Avoid foods or drinks that are more likely to cause heartburn, such as rich, spicy, fatty and fried foods, chocolate, caffeine, alcohol and even some acidic fruits and vegetables.
- Eat slowly and do not eat big meals.
- Do not eat late at night or just before bedtime.
- Do not lie flat or bend over soon after eating.
- Raise the head of your bed.
- Wear loose-fitting clothing around your stomach.
- If you are overweight, lose weight.
- If you smoke, quit smoking.

Nexium[®]

(esomeprazole magnesium)
Delayed-Release Capsules **24HR**
22.3 mg/Acid Reducer

Do Not Use if seal under bottle cap imprinted with "SEALED for YOUR PROTECTION" or yellow band around the center of each capsule is broken or missing.

PRODUCTION

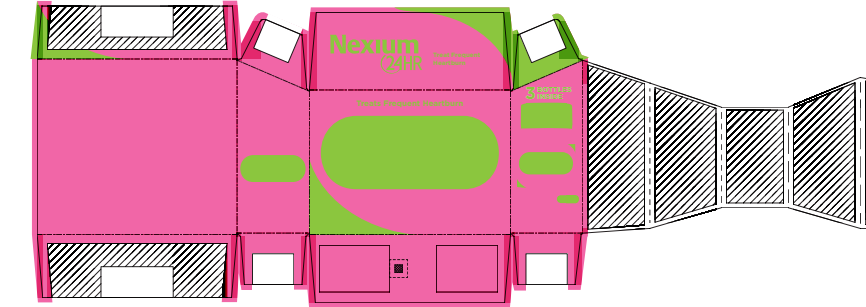
(NOT COLOR ACCURATE)

Job Information	Color Legend
<p>Date 02-DEC-2014 PASS # 1 Component # D000050549 Drawing # 119216AP10</p>	
<p>Identification</p> <p> Consumer Healthcare</p>	

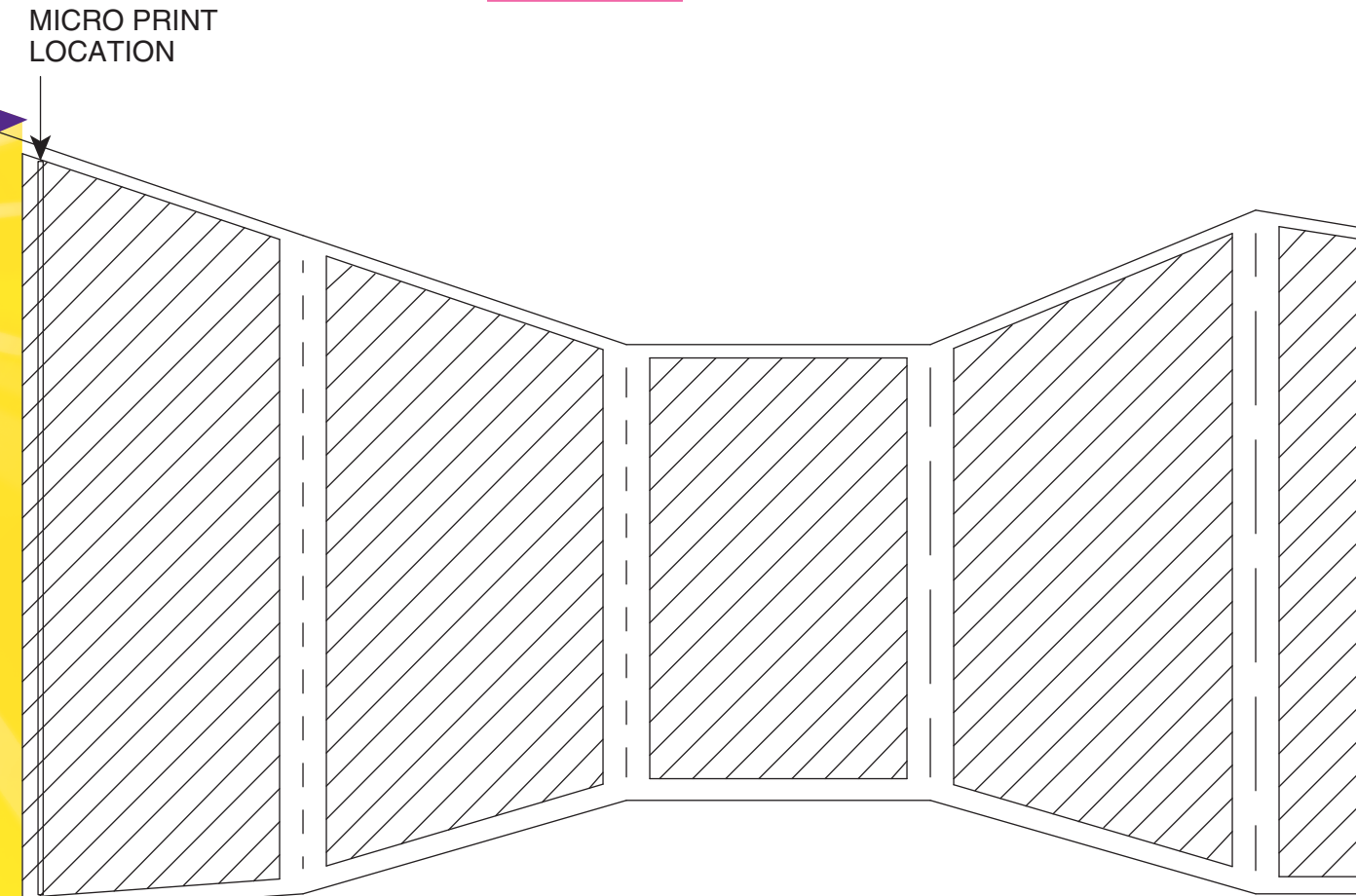
DRUG FACTS TEXT DEFINED	TYPE SIZE
• DRUG FACTS TITLE	10 pt
• DRUG FACTS CONTINUED	9 pt
• HEADINGS	9 pt
• SUBHEADINGS/BODY TEXT	7 pt
• LEADING	7.5 pt
• # OF CHARACTERS PER INCH	<39
• BULLETS	6 pt
• SPACE BEFORE BULLET	2 ems
• BARLINES, HAIRLINES	1.5 pt, .5 pt
• SPACE BETWEEN HAIRLINES AND BOX END	2 spaces



Gloss and Matte Varnish -
Full size file on Varnish layer



Emboss -
Full size file on Emboss layer*
* There are two levels of Embossing.



128 CODE AREA - SUBSET C 10 MIL DENSITY
WITH 4 OR 6 DIGITS (CODE TO EXTEND
TO EDGE OF FLAP - UNVARNISHED)
PRINTED SIDE OF CARTON

LOT & EXP AREA.
DARK COLOR FOR
LASER PRINTING.

3/16" DATA MATRIX CODE
WITH 1/8" QUIET ZONE
ON ALL SIDES
DATA MATRIX CODE = 056450

PRODUCTION

(NOT COLOR ACCURATE)

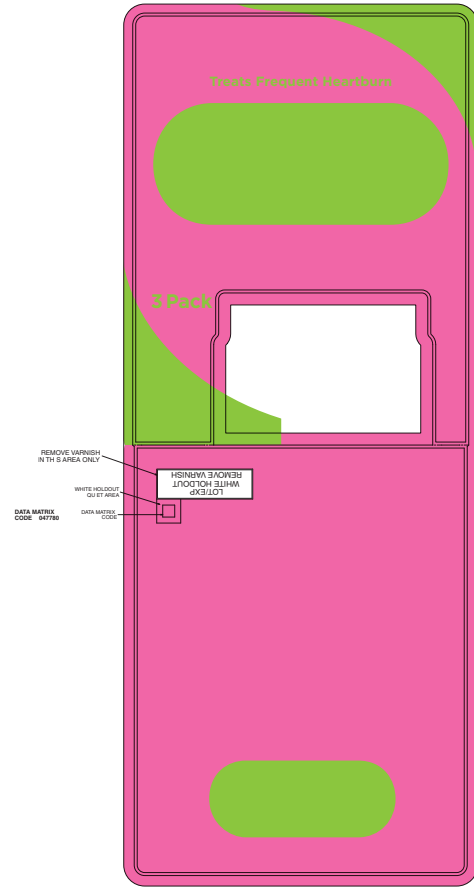
Job Information	
Date	21-NOV-2014 PASS # 1
Component #	PAA056450
Drawing #	(b) (4) 50013884v05
Identification	
Pfizer Consumer Healthcare (b) (4)	

Color Legend	
(b) (4)	

DRUG FACTS TEXT DEFINED	TYPE SIZE
• DRUG FACTS TITLE	9 pt
• DRUG FACTS CONTINUED	8 pt
• HEADINGS	8 pt
• SUBHEADINGS/BODY TEXT	6 pt
• LEADING	6.5 pt
• # OF CHARACTERS PER INCH	<39
• BULLETS	5 pt
• SPACE BEFORE BULLET	2 ems
• BARLINES, HAIRLINES	1.5 pt, .5 pt
• SPACE BETWEEN HAIRLINES AND BOX END	2 spaces

FRONT

Gloss and Matt Varnish -
Full size file on Varnish layers



Treats Frequent Heartburn

Nexium[®]

(esomeprazole magnesium)
Delayed-Release Capsules **24HR**
22.3 mg/Acid Reducer

May take 1 to 4 days for full effect

3 Pack

42 CAPSULES
Three 14-day courses of treatment

Marketed by: Pfizer, Madison, NJ 07940 USA
© 2014 Pfizer Inc.
Made in France

For most recent product information, visit www.Nexium24HR.com
Nexium and the colors purple and gold as applied to the capsules are registered trademarks of AstraZenca AB and are used under license.

050624
3 0573 2450 43 8

KEEP CARD FOR COMPLETE WARNINGS AND IMPORTANT INFORMATION.

Do Not Use if seal under bottle cap imprinted with "SEALED FOR YOUR PROTECTION" or yellow band around the center of each capsule is broken or missing.

Tips for Managing Heartburn

- Avoid foods or drinks that are more likely to cause heartburn, such as rich, spicy, fatty and fried foods, chocolate, caffeine, alcohol and even some acidic fruits and vegetables.
- Eat slowly and do not eat big meals.
- Do not eat late at night or just before bedtime.
- Do not lie flat or bend over soon after eating.
- Raise the head of your bed.
- Wear loose-fitting clothing around your stomach.
- If you are overweight, lose weight.
- If you smoke, quit smoking.

Drug Facts (continued)

Active Ingredient (in each capsule)
Esomeprazole 20 mg
Esomeprazole magnesium thiyhydrate 22.3 mg (each delayed-release capsule corresponds to 22.3 mg Acid Reducer)

Purpose
Treats frequent heartburn (occurs 2 or more days a week) and provides for immediate relief of heartburn; this drug may take 1 to 4 days for full effect.

Warnings
Do not use if you have:
- trouble or pain swallowing food, vomiting with blood, or bloody or black stools
- heartburn with lightheadedness, sweating or dizziness
- chest pain or shoulder pain with shortness of breath, sweating, pain spreading to arms, neck or shoulders, or lightheadedness
- frequent chest pain
These may be signs of a serious condition. See your doctor.
Ask a doctor before use if you have
- had heartburn over 3 months. This may be a sign of a more serious condition.
- frequent wheezing, particularly with heartburn
- unexplained weight loss
- nausea or vomiting
- stomach pain
Ask a doctor or pharmacist before use if you are taking
- warfarin, clopidogrel or clostazet (blood-thinning medicines)
- prescription antifungal or anti-yeast medicines
- dioxin (heart medicine)
- diazepam (anxiety medicine)
- tacrolimus or cyclosporin (immunosuppressant medicines)
- meprobamate (anxiety medicine)
- Stop use and ask a doctor if:
- your heartburn continues or worsens
- you need to take this product for more than 14 days
- you get diarrhea
- you get dizziness

Other Information
- read the directions and warnings before use
- store at 20-25°C (68-77°F)
- keep the card, it contains important information.

Inactive Ingredients
corn starch, D.C. red no. 28, FD&C blue no. 1, FD&C red no. 40, ferric oxide, gelatin, glyceryl monostearate, hydroxypropyl cellulose, hypromellose, magnesium stearate, methacrylic acid copolymer, pharmaceutical ink, polysorbate 80, sucrose, talc, titanium dioxide, triethyl citrate

Questions or comments?
call toll-free 1-866-226-1600

REMOVE VARNISH
IN THIS AREA ONLY

WHITE HOLDOUT
QUIET AREA

DATA MATRIX CODE
050624

PRINT SIDE

BACK

PRODUCTION

(NOT COLOR ACCURATE)

Job Information	Color Legend
<p>Date 24-NOV-2014 PASS # 1 Component # D000050624 Drawing # Vendor# 119215AP06_A</p>	(b) (4)
<p>Identification</p> <p> Pfizer Consumer Healthcare</p>	(b) (4)

DRUG FACTS TEXT DEFINED	TYPE SIZE
• DRUG FACTS TITLE	10 pt
• DRUG FACTS CONTINUED	9 pt
• HEADINGS	9 pt
• SUBHEADINGS/BODY TEXT	7 pt
• LEADING	7.5 pt
• # OF CHARACTERS PER INCH	<39
• BULLETS	6 pt
• SPACE BEFORE BULLET	N/A
• BARLINES, HAIRLINES	1.5 pt, .5 pt
• SPACE BETWEEN HAIRLINES AND BOX END	2 spaces