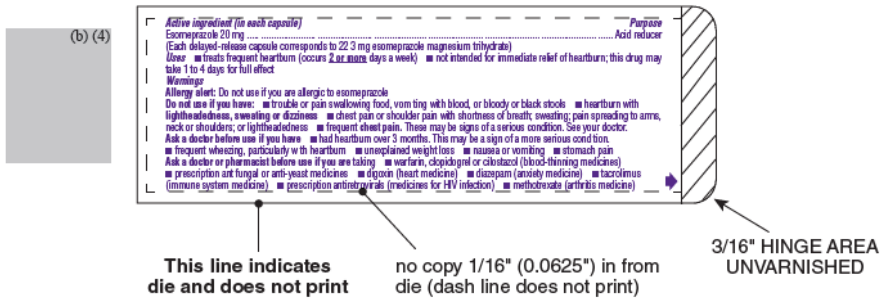
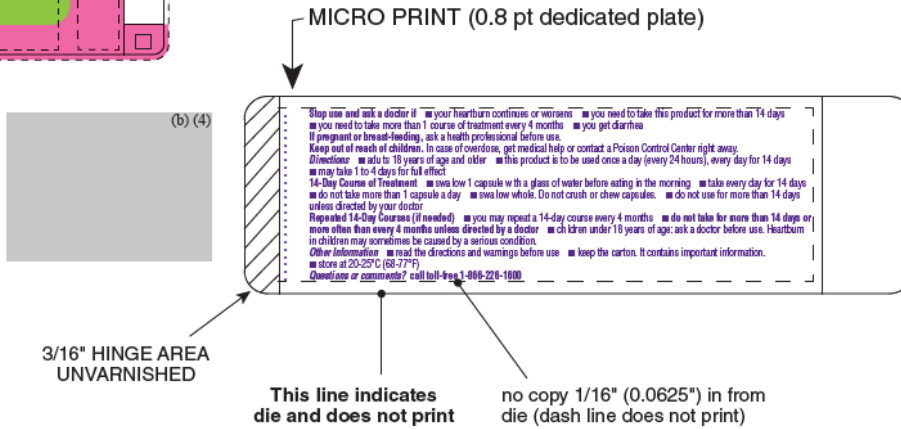
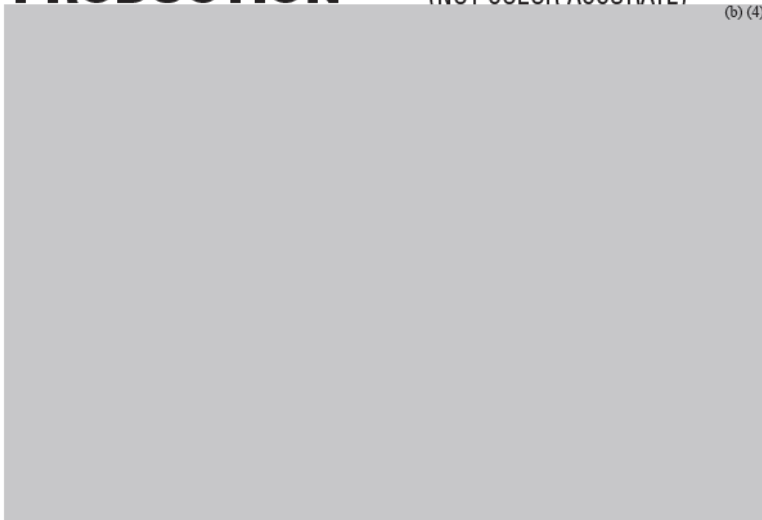


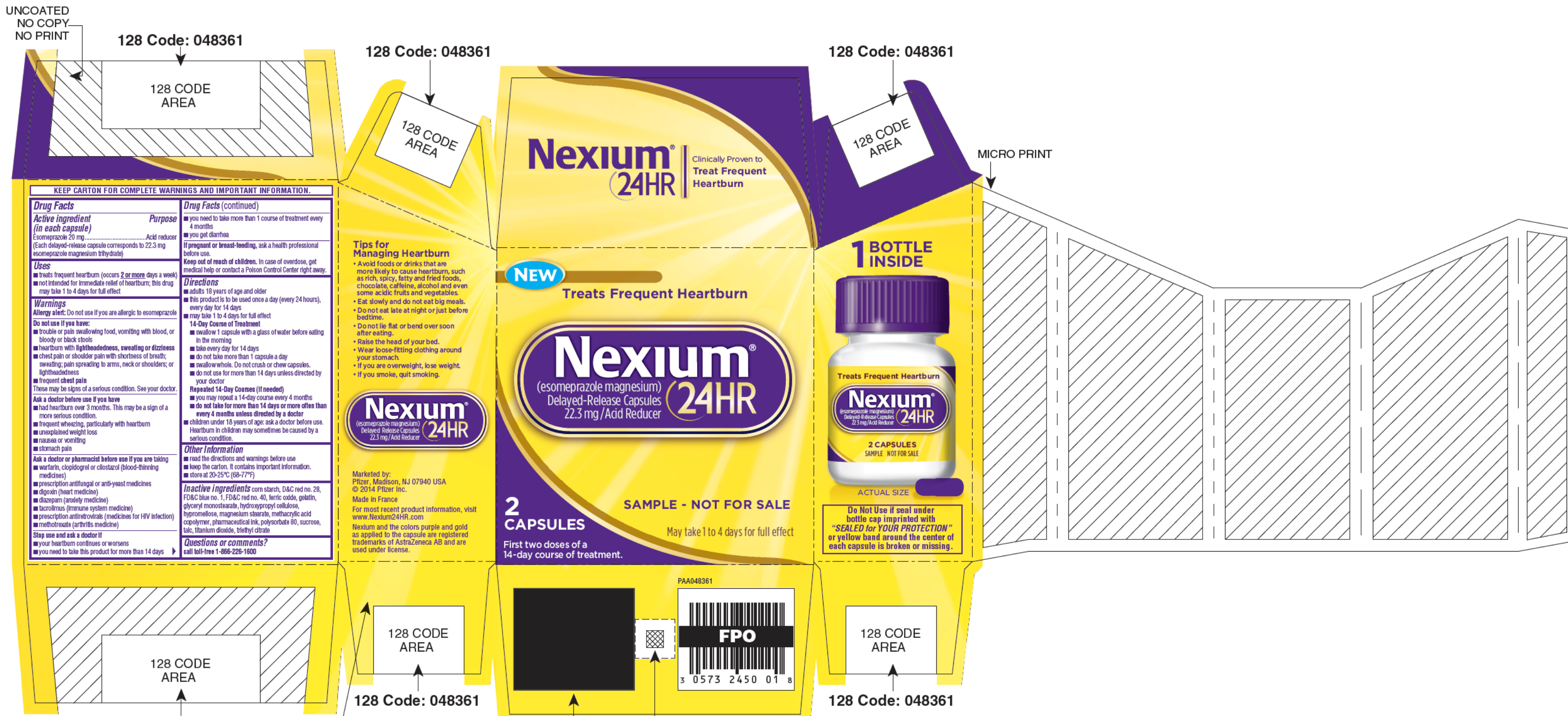
Gloss and Matt Varnish - Full size file on Varnish layer



PRODUCTION (NOT COLOR ACCURATE)



DRUG FACTS TEXT DEFINED	TYPE SIZE
• HEADINGS	4.5 pt
• SUBHEADINGS/BODY TEXT	4.5 pt
• LEADING	4.5 pt
• BULLETS	3.5 pt
• SPACE BEFORE BULLET	2 ems
• WARNING BOX LINE, HAIRLINES	1 pt, .5 pt



128 CODE AREA - SUBSET C 10 MIL DENSITY WITH 4 OR 6 DIGITS (CODE TO EXTEND TO EDGE OF FLAP - UNVARNISHED) PRINTED SIDE OF CARTON
128 Code: 048361

MICRO PRINT

LOT & EXP AREA. DARK COLOR FOR LASER PRINTING.

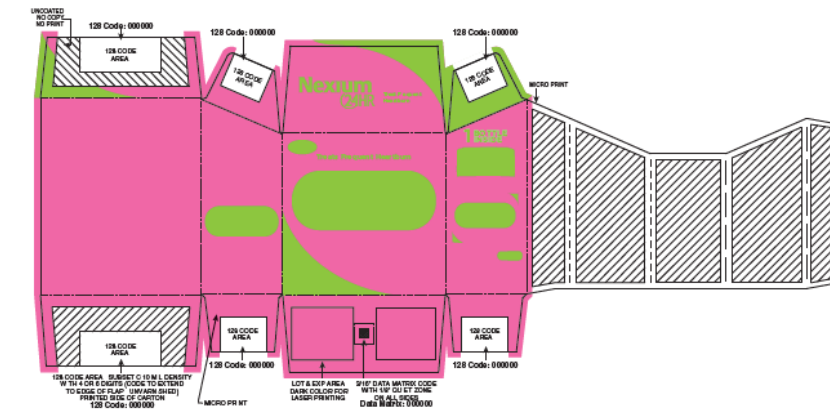
3/16" DATA MATRIX CODE WITH 1/8" QUIET ZONE ON ALL SIDES
Data Matrix: 048361

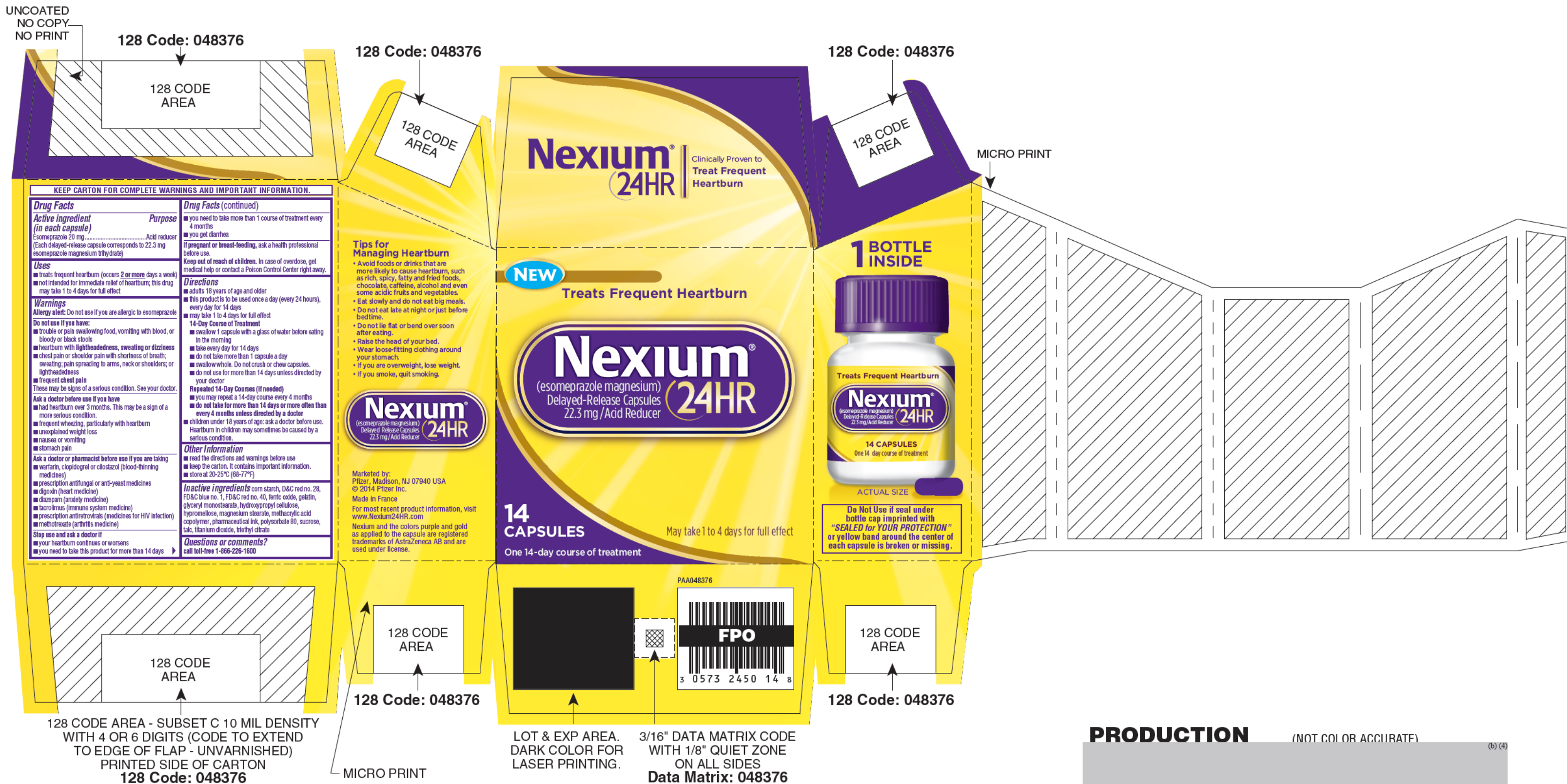
PRODUCTION (NOT COLOR ACCURATE)



DRUG FACTS TEXT DEFINED	TYPE SIZE
• DRUG FACTS TITLE	9 pt
• DRUG FACTS CONTINUED	8 pt
• HEADINGS	8 pt
• SUBHEADINGS/BODY TEXT	6 pt
• LEADING	6.5 pt
• # OF CHARACTERS PER INCH	<39
• BULLETS	5 pt
• SPACE BEFORE BULLET	2 ems
• BARLINES, HAIRLINES	1.5 pt, .5 pt
• SPACE BETWEEN HAIRLINES AND BOX END	2 spaces

Gloss and Matt Varnish - Full size file on Varnish layer





128 CODE AREA - SUBSET C 10 MIL DENSITY WITH 4 OR 6 DIGITS (CODE TO EXTEND TO EDGE OF FLAP - UNVARNISHED) PRINTED SIDE OF CARTON
128 Code: 048376

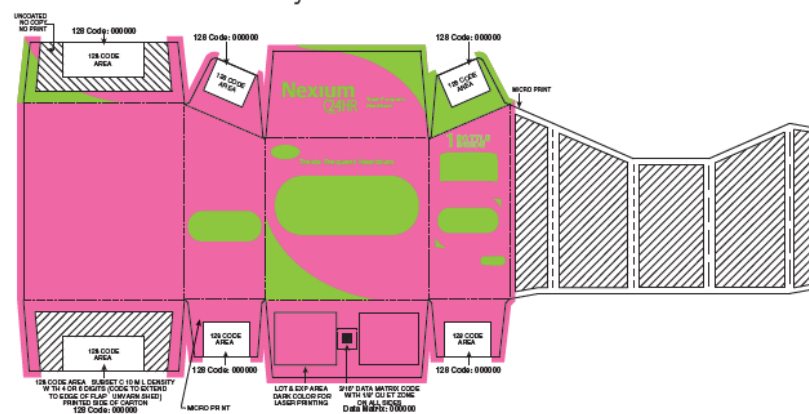
MICRO PRINT

LOT & EXP AREA. DARK COLOR FOR LASER PRINTING.
3/16" DATA MATRIX CODE WITH 1/8" QUIET ZONE ON ALL SIDES
Data Matrix: 048376

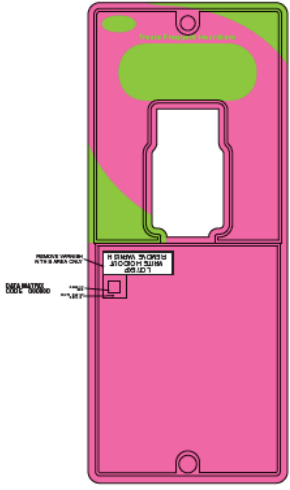
PRODUCTION (NOT COLOR ACCURATE)

(b) (4)

Gloss and Matt Varnish - Full size file on Varnish layer



Gloss and Matt Varnish -
Full size file on Varnish layers



REMOVE VARNISH
IN THIS AREA ONLY

DATA MATRIX
CODE = 048367

DATA MATRIX
CODE

WHITE HOLDOUT
QUIET AREA

PRODUCTION

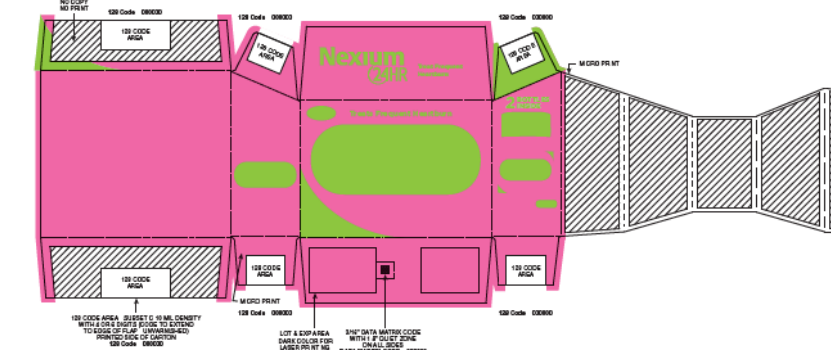
(NOT COLOR ACCURATE)

(b) (4)

DRUG FACTS TEXT DEFINED	TYPE SIZE
• DRUG FACTS TITLE	9 pt
• DRUG FACTS CONTINUED	8 pt
• HEADINGS	8 pt
• SUBHEADINGS/BODY TEXT	6 pt
• LEADING	6.5 pt
• # OF CHARACTERS PER INCH	<39
• BULLETS	5 pt
• SPACE BEFORE BULLET	2 ems
• BARLINES, HAIRLINES	1.5 pt, .5 pt
• SPACE BETWEEN HAIRLINES AND BOX END	2 spaces



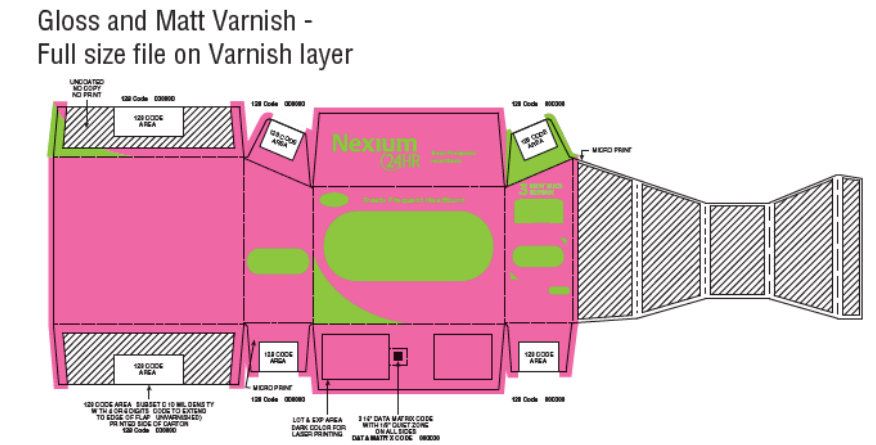
Gloss and Matt Varnish -
Full size file on Varnish layer



PRODUCTION (NOT COLOR ACCURATE)



DRUG FACTS TEXT DEFINED	TYPE SIZE
• DRUG FACTS TITLE	9 pt
• DRUG FACTS CONTINUED	8 pt
• HEADINGS	8 pt
• SUBHEADINGS/BODY TEXT	6 pt
• LEADING	6.5 pt
• # OF CHARACTERS PER INCH	<39
• BULLETS	5 pt
• SPACE BEFORE BULLET	2 ems
• BARLINES, HAIRLINES	1.5 pt, .5 pt
• SPACE BETWEEN HAIRLINES AND BOX END	2 spaces



PRODUCTION



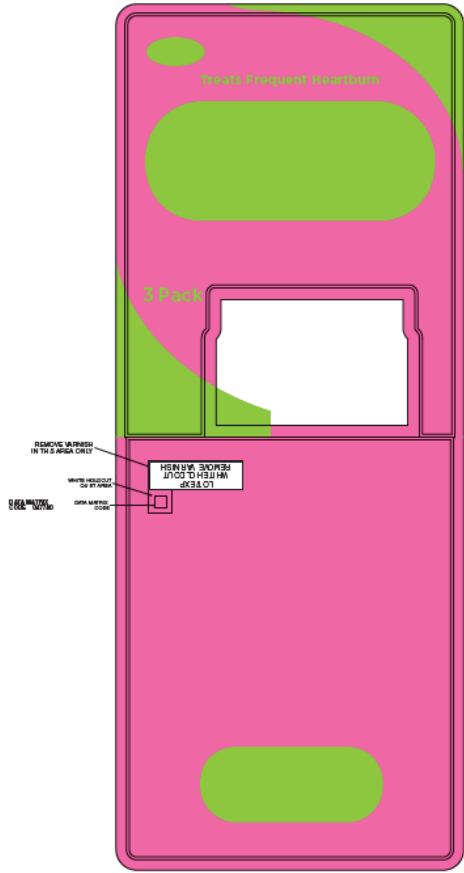
DRUG FACTS TEXT DEFINED	TYPE SIZE
• DRUG FACTS TITLE	9 pt
• DRUG FACTS CONTINUED	8 pt
• HEADINGS	8 pt
• SUBHEADINGS/BODY TEXT	6 pt
• LEADING	6.5 pt
• # OF CHARACTERS PER INCH	<39
• BULLETS	5 pt
• SPACE BEFORE BULLET	2 ems
• BARLINES, HAIRLINES	1.5 pt, .5 pt
• SPACE BETWEEN HAIRLINES AND BOX END	2 spaces

128 CODE AREA - SUBSET C 10 MIL DENSITY WITH 4 OR 6 DIGITS (CODE TO EXTEND TO EDGE OF FLAP - UNVARNISHED) PRINTED SIDE OF CARTON

LOT & EXP AREA. DARK COLOR FOR LASER PRINTING.

3/16" DATA MATRIX CODE WITH 1/8" QUIET ZONE ON ALL SIDES
DATA MATRIX CODE = 048372

Gloss and Matt Varnish -
Full size file on Varnish layers



NEW

Treats Frequent Heartburn

Nexium®

(esomeprazole magnesium)
Delayed-Release Capsules **24HR**
22.3 mg/Acid Reducer

May take 1 to 4 days for full effect

3 Pack

42 CAPSULES
Three 14-day courses of treatment

REMOVE VARNISH IN THIS AREA ONLY

WHITE HOLDOUT QUIET AREA

DATA MATRIX CODE = 048363

DATA MATRIX CODE

REMOVE VARNISH

LOT/EXP

WHITE HOLDOUT

3 0573 2450 45 8

FPO

Marketed by: Pfizer, Madison, NJ 07940 USA
© 2014 Pfizer Inc.
Made in France
For most recent product information, visit www.NexiumUS.com
Nexium and the colors purple and gold as applied to the capsule are registered trademarks of AstraZeneca AB and are used under license.

KEEP CARD FOR COMPLETE WARNINGS AND IMPORTANT INFORMATION.

Drug Facts

Active ingredient (in each capsule)
Esomeprazole magnesium delayed-release capsules, 22.3 mg (Each delayed-release capsule corresponds to 22.3 mg of esomeprazole magnesium trihydrate)

Uses
Treats frequent heartburn (occurs 2 or more days a week) not intended for immediate relief of heartburn; this drug may take 1 to 4 days for full effect

Warnings
Do not use if you have:
- trouble or pain swallowing food, vomiting with blood, or bloody or dark stools
- heartburn with lightheadedness, sweating or dizziness
- chest pain spreading to arms, neck or shoulder, or lightheadedness
- frequent weight loss
- frequent heartburn, particularly with heartburn condition.
Ask a doctor before use if you have:
- had heartburn over 3 months. This may be a sign of a more serious condition.
- frequent heartburn, particularly with heartburn condition.
Ask a doctor or pharmacist before use if you are taking:
- warfarin, clopidogrel or clozapine (blood-thinning medicines)
- prescription antifungal or anti-yeast medicines
- digoxin (heart medicine)
- azapiron (anxiety medicine)
- tacrolimus (immune system medicine)
- methotrexate (arthritis medicine)
Stop use and ask a doctor if:
- your heartburn continues or worsens
- you need to take this product for more than 14 days
- you need to take more than 1 course of the treatment every 4 months
- you get diarrhea

Directions
Adults 18 years of age and older
- This product is to be used once a day (every 24 hours), every day for 14 days
- may take 1 to 4 days for full effect

14-Day Course of Treatment
- swallow 1 capsule with a glass of water before eating in the morning
- take every day for 14 days
- do not take more than 1 capsule a day
- swallow whole. Do not crush or chew capsules.
- do not use for more than 14 days unless directed by your doctor

Repeated 14-Day Courses (if needed)
- do not use for more than 14 days unless directed by your doctor
- do not take more than 14 days or more often than every 4 months unless directed by a doctor

Other Information
- read the directions and warnings before use
- keep the card. It contains important information.
- store at 20-25°C (68-77°F)

Inactive ingredients
corn starch, FD&C red no. 28, FD&C blue no. 1, FD&C red no. 40, ferric oxide, gelatin, glyceryl monostearate, hydroxypropyl cellulose, hypromellose, magnesium stearate, methacrylic acid copolymer, polyethylene glycol, polyethylene glycol succinate, titanium dioxide, triethyl citrate

Questions or comments?
call toll-free 1-866-226-1600

Drug Facts (continued)

Purpose
Esomeprazole magnesium delayed-release capsules, 22.3 mg (Each delayed-release capsule corresponds to 22.3 mg of esomeprazole magnesium trihydrate)

Warnings
Do not use if you are allergic to esomeprazole

Do not use if you have:
- trouble or pain swallowing food, vomiting with blood, or bloody or dark stools
- heartburn with lightheadedness, sweating or dizziness
- chest pain spreading to arms, neck or shoulder, or lightheadedness
- frequent weight loss
- frequent heartburn, particularly with heartburn condition.
Ask a doctor before use if you have:
- had heartburn over 3 months. This may be a sign of a more serious condition.
- frequent heartburn, particularly with heartburn condition.
Ask a doctor or pharmacist before use if you are taking:
- warfarin, clopidogrel or clozapine (blood-thinning medicines)
- prescription antifungal or anti-yeast medicines
- digoxin (heart medicine)
- azapiron (anxiety medicine)
- tacrolimus (immune system medicine)
- methotrexate (arthritis medicine)
Stop use and ask a doctor if:
- your heartburn continues or worsens
- you need to take this product for more than 14 days
- you need to take more than 1 course of the treatment every 4 months
- you get diarrhea

Do Not Use if seal under bottle cap in print with "SEALED FOR YOUR PROTECTION" or yellow band around the center of each capsule is broken or missing.

Tips for Managing Heartburn

- Avoid foods or drinks that are more likely to cause heartburn, such as rich, spicy, fatty and fried foods, chocolate, caffeine, alcohol and even some acid fruits and vegetables.
- Eat slowly and do not eat big meals.
- Do not eat late at night or just before bedtime.
- Do not lie flat or bend over soon after eating.
- Raise the head of your bed.
- Wear loose-fitting clothing around your stomach.
- If you are overweight, lose weight.
- If you smoke, quit smoking.

PRODUCTION

(NOT COLOR ACCURATE)

(9)

DRUG FACTS TEXT DEFINED	TYPE SIZE
• DRUG FACTS TITLE	10 pt
• DRUG FACTS CONTINUED	9 pt
• HEADINGS	9 pt
• SUBHEADINGS/BODY TEXT	7 pt
• LEADING	7.5 pt
• # OF CHARACTERS PER INCH	<39
• BULLETS	6 pt
• SPACE BEFORE BULLET	N/A
• BARLINES, HAIRLINES	1.5 pt, .5 pt
• SPACE BETWEEN HAIRLINES AND BOX END	2 spaces