

**HIGHLIGHTS OF PRESCRIBING INFORMATION**

These highlights do not include all the information needed to use POSIMIR® safely and effectively. See full prescribing information for POSIMIR.

POSIMIR (bupivacaine solution) for infiltration use  
Initial Bupivacaine U.S. Approval: 1972

**WARNING: RISK OF POTENTIAL ADVERSE EMBOLIC EFFECTS RESULTING FROM INADVERTENT INTRAVASCULAR INJECTION**

See full prescribing information for complete boxed warning.

Inadvertent intravascular injection could cause POSIMIR droplets to be deposited in the pulmonary and other capillary beds. Administer POSIMIR into the subacromial space at the end of arthroscopic shoulder surgery. Direct arthroscopic visualization must be used to confirm proper placement of the needle tip before injecting POSIMIR. (5.1)

**INDICATIONS AND USAGE**

POSIMIR contains an amide local anesthetic and is indicated in adults for administration into the subacromial space under direct arthroscopic visualization to produce post-surgical analgesia for up to 72 hours following arthroscopic subacromial decompression.

**Limitations of Use**

Safety and effectiveness have not been established in other surgical procedures, including soft tissue surgical procedures, other orthopedic procedures, including for intra-articular administration, and boney procedures, or when used for neuraxial or peripheral nerve blockade.

**DOSAGE AND ADMINISTRATION**

- For single-dose administration only. (2.1)
- Do not dilute or mix with local anesthetics or other drugs or diluents. (2.1)
- Do not convert from other bupivacaine formulations to POSIMIR. Do not substitute. (2.1)
- Avoid additional use of local anesthetics within 168 hours following administration of POSIMIR.
- The recommended dose is 660 mg (5 mL). (2.2).

See Full Prescribing Information for additional dosage and administration instructions and compatibility considerations. (2.3,2.4)

**DOSAGE FORMS AND STRENGTHS**

Solution: 5 mL single-dose vial, 660 mg/5 mL (132 mg/mL) (3).

**FULL PRESCRIBING INFORMATION**

**WARNING: RISK OF POTENTIAL ADVERSE EMBOLIC EFFECTS RESULTING FROM INADVERTENT INTRAVASCULAR INJECTION**

**1 INDICATIONS AND USAGE**

**2 DOSAGE AND ADMINISTRATION**

- 2.1 Important Dosage and Administration Information
- 2.2 Recommended Dose
- 2.3 Preparation, Administration, and Dosing Instructions
- 2.4 Compatibility Considerations

**3 DOSAGE FORMS AND STRENGTHS**

**4 CONTRAINDICATIONS**

**5 WARNINGS AND PRECAUTIONS**

- 5.1 Risk of Potential Adverse Embolic Effects Resulting from Inadvertent Intravascular Injection
- 5.2 Risk of Joint Cartilage Necrosis with Unapproved Intra-articular Use
- 5.3 Risk of Systemic Toxicity
- 5.4 Methemoglobinemia
- 5.5 Chondrolysis with Intra-Articular Infusion of Local Anesthetics
- 5.6 Risk of Toxicity in Patients with Hepatic Impairment
- 5.7 Risk of Use in Patients with Impaired Cardiovascular Function

**CONTRAINDICATIONS**

- Patients with a known hypersensitivity (e.g. anaphylactic reactions and serious skin reactions) to any amide local anesthetic, or other components of POSIMIR.
- Patients undergoing obstetrical paracervical block anesthesia (4).

**WARNINGS AND PRECAUTIONS**

- Risk of Joint Cartilage Necrosis with Unapproved Intra-articular Use:** A study evaluating the effects of POSIMIR and POSIMIR vehicle in dogs following an intra-articular administration demonstrated joint cartilage necrosis (5.2, 13.2).
- Risk of Systemic Toxicity:** Careful and constant monitoring of cardiovascular and respiratory (adequacy of ventilation) vital signs and the patient's state of consciousness should be performed after injection of bupivacaine. (5.3)
- Methemoglobinemia:** Cases of methemoglobinemia have been reported in association with local anesthetic use. See Full Prescribing Information for more detail on managing these risks. (5.4)
- Chondrolysis with Intra-Articular Infusion:** Intra-articular infusions of local anesthetics including POSIMIR following arthroscopic and other surgical procedures is an unapproved use, and there have been post-marketing reports of chondrolysis in patients receiving such infusions. (5.5)

**ADVERSE REACTIONS**

Adverse reactions reported with an incidence greater than or equal to 10% and greater than control following POSIMIR administration in shoulder surgery were dizziness, dysgeusia, dysuria, headache, hypoesthesia, paresthesia, tinnitus, and vomiting (6.1).

Adverse reactions reported with an incidence greater than or equal to 10% and greater than control following POSIMIR administration in soft tissue surgical procedures were anemia, bradycardia, constipation, C-reactive protein increased, diarrhea, dizziness, dysgeusia, headache, nausea, post procedural contusion (bruising), procedural pain, pruritus, pyrexia, somnolence, surgical site bleeding, visible bruising, and vomiting (6.1).

To report SUSPECTED ADVERSE REACTIONS, contact DURECT Corporation at 1-844-767-4647 or FDA at 1-800-FDA-1088 or [www.fda.gov/medwatch](http://www.fda.gov/medwatch).

**USE IN SPECIFIC POPULATIONS**

**Moderate to Severe Hepatic Impairment:** Consider reduced dosing and increased monitoring for bupivacaine toxicity. (8.6)

See 17 for PATIENT COUNSELING INFORMATION

Revised: 02/2021

**6 ADVERSE REACTIONS**

6.1 Clinical Trials Experience

**7 DRUG INTERACTIONS**

**8 USE IN SPECIFIC POPULATIONS**

- 8.1 Pregnancy
- 8.2 Lactation
- 8.4 Pediatric Use
- 8.5 Geriatric Use
- 8.6 Hepatic Impairment
- 8.7 Renal Impairment

**10 OVERDOSAGE**

**11 DESCRIPTION**

**12 CLINICAL PHARMACOLOGY**

- 12.1 Mechanism of Action
- 12.2 Pharmacodynamics
- 12.3 Pharmacokinetics

**13 NONCLINICAL TOXICOLOGY**

- 13.1 Carcinogenesis, Mutagenesis, Impairment of Fertility
- 13.2 Animal Toxicology and/or Pharmacology

**14 CLINICAL STUDIES**

**16 HOW SUPPLIED/STORAGE AND HANDLING**

**17 PATIENT COUNSELING INFORMATION**

Sections or subsections omitted from the full prescribing information are not listed.

**WARNING: RISK OF POTENTIAL ADVERSE EMBOLIC EFFECTS  
RESULTING FROM INADVERTENT INTRAVASCAULAR INJECTION**

Inadvertent intravascular injection could cause POSIMIR droplets to be deposited in the pulmonary and other capillary beds. Administer POSIMIR into the subacromial space at the end of arthroscopic shoulder surgery. Direct arthroscopic visualization must be used to confirm proper placement of the needle tip before injecting POSIMIR. [see *Warnings and Precautions (5.1)*].

**FULL PRESCRIBING INFORMATION**

**1 INDICATIONS AND USAGE**

POSIMIR is indicated in adults for administration into the subacromial space under direct arthroscopic visualization to produce post-surgical analgesia for up to 72 hours following arthroscopic subacromial decompression.

Limitations of Use

Safety and effectiveness have not been established in other surgical procedures, including soft tissue surgical procedures, other orthopedic procedures, including for intra-articular administration, and boney procedures, or when used for neuraxial or peripheral nerve blockade.

**2 DOSAGE AND ADMINISTRATION**

**2.1 Important Dosage and Administration Information**

- POSIMIR is intended for single-dose administration only.
- Do not dilute or mix POSIMIR with local anesthetics or other drugs or diluents.
- As there is a potential risk of severe, life-threatening adverse reactions associated with the administration of bupivacaine, POSIMIR should be administered in a setting where trained personnel and equipment are available to promptly treat patients who show evidence of neurological or cardiac toxicity.
- Different formulations of bupivacaine are not bioequivalent to POSIMIR even if the milligram dosage is the same. It is not possible to convert dosing from any other formulations of bupivacaine to POSIMIR and vice versa. Do not substitute.
- The toxic effects of local anesthetics are additive. Avoid additional use of local anesthetics within 168 hours following administration of POSIMIR.
- Avoid intravascular administration of POSIMIR. Convulsions and cardiac arrest have occurred following accidental intravascular injection of bupivacaine and other amide-containing products.
- POSIMIR is not indicated for the following routes of administration.
  - Epidural
  - Intrathecal
  - Intravascular
  - Intra-articular use [see *Nonclinical Toxicology (13.2)*]
  - Regional nerve blocks

- Pre-incisional or pre-procedural locoregional anesthetic techniques that require deep and complete sensory block in the area of administration.

## 2.2 Recommended Dose

The recommended dose of POSIMIR is 660 mg (5 mL).

## 2.3 Preparation, Administration, and Dosing Instructions

- POSIMIR is ready to use and does not require dilution or mixing.
- Prior to administration, draw up POSIMIR into a 5 mL syringe using a large bore needle (16 gauge or larger). Once the syringe has been filled, discard the large bore needle.
- At the close of surgery, administer the entire 5 mL dose of POSIMIR into the subacromial space using an 18 gauge or larger-bore needle. The needle may be inserted through an existing arthroscopic port or through intact skin to reach the subacromial space. Confirm correct placement of the needle tip within the subacromial space by direct arthroscopic visualization.
- Do not administer POSIMIR into the glenohumeral intra-articular space.

## 2.4 Compatibility Considerations

POSIMIR is compatible with:

- Commonly implantable materials, such as polypropylene and polyester
- Silk, nylon, gut, polypropylene, polydioxanone, and polyglycolic acid sutures

## 3 DOSAGE FORMS AND STRENGTHS

POSIMIR (bupivacaine solution) is a sterile, nonpyrogenic, clear, light yellow to amber solution in a clear, glass vial.

- 5 mL single-dose vial: 660 mg/5 mL (132 mg/mL)

## 4 CONTRAINDICATIONS

POSIMIR is contraindicated in:

- Patients with a known hypersensitivity (e.g., anaphylactic reactions and serious skin reactions) to any amide local anesthetic, or other components of POSIMIR.
- Patients undergoing obstetrical paracervical block anesthesia. The use of bupivacaine HCl with this technique has resulted in fetal bradycardia and death.

## 5 WARNINGS AND PRECAUTIONS

### 5.1 Risk of Potential Adverse Embolic Effects Resulting from Inadvertent Intravascular Injection

Inadvertent intravascular injection could cause POSIMIR droplets to be deposited in the pulmonary and other capillary beds. Administer POSIMIR into the subacromial space at the end of arthroscopic shoulder surgery. Direct arthroscopic visualization must be used to confirm proper placement of the needle tip before injecting POSIMIR.

### 5.2 Risk of Joint Cartilage Necrosis with Unapproved Intra-articular Use

The safety and effectiveness of POSIMIR in surgical procedures other than subacromial decompression have not been established, and POSIMIR is not approved for use via intra-articular injection. A study evaluating the effects of POSIMIR and POSIMIR vehicle in dogs following an intra-articular administration demonstrated joint cartilage necrosis [*see Nonclinical Toxicology (13.2)*].

### 5.3 Risk of Systemic Toxicity

Unintended intravascular injection of POSIMIR may be associated with systemic toxicities, including CNS or cardiorespiratory depression and coma, progressing ultimately to respiratory arrest. Direct

arthroscopic visualization must be used to confirm proper placement of the needle tip in the subacromial space before injecting POSIMIR.

The safety and effectiveness of bupivacaine depend on proper dosage, correct technique, adequate precautions, and readiness for emergencies. Careful and constant monitoring of cardiovascular and respiratory (adequacy of ventilation) vital signs and the patient's state of consciousness should be performed after injection of bupivacaine.

Possible early warning signs of central nervous system (CNS) toxicity are restlessness, anxiety, incoherent speech, lightheadedness, numbness and tingling of the mouth and lips, metallic taste, tinnitus, dizziness, blurred vision, tremors, twitching, CNS depression, or drowsiness. Delay in proper management of systemic toxicity, underventilation from any cause, and/or altered sensitivity may lead to the development of acidosis, cardiac arrest, and, possibly, death.

Avoid additional use of local anesthetics within 168 hours following administration of POSIMIR. Injection of repeated doses of bupivacaine may cause significant increases in plasma levels due to slow accumulation of the drug or its metabolites, or to slow metabolic degradation. Tolerance to elevated blood levels varies with the status of the patient. Consider increased monitoring for systemic toxicity in debilitated, elderly, or acutely ill patients.

#### **5.4 Methemoglobinemia**

Cases of methemoglobinemia have been reported in association with local anesthetic use. Although all patients are at risk for methemoglobinemia, patients with glucose-6-phosphate dehydrogenase deficiency, congenital or idiopathic methemoglobinemia, cardiac or pulmonary compromise, infants under 6 months of age, and concurrent exposure to oxidizing agents or their metabolites are more susceptible to developing clinical manifestations of the condition [*see Drug Interactions (7)*]. If local anesthetics must be used in these patients, close monitoring for symptoms and signs of methemoglobinemia is recommended.

Signs of methemoglobinemia may occur immediately or may be delayed some hours after exposure, and are characterized by a cyanotic skin discoloration and/or abnormal coloration of the blood.

Methemoglobin levels may continue to rise; therefore, immediate treatment is required to avert more serious central nervous system and cardiovascular adverse effects, including seizures, coma, arrhythmias, and death. Discontinue any oxidizing agents. Depending on the severity of the signs and symptoms, patients may respond to supportive care, i.e., oxygen therapy, hydration. A more severe clinical presentation may require treatment with methylene blue, exchange transfusion, or hyperbaric oxygen.

#### **5.5 Chondrolysis with Intra-Articular Infusion of Local Anesthetics**

Intra-articular infusions of local anesthetics including bupivacaine following arthroscopic and other surgical procedures is an unapproved use, and there have been post-marketing reports of chondrolysis in patients receiving such infusions. The majority of reported cases of chondrolysis have involved the shoulder joint; cases of gleno-humeral chondrolysis have been described in pediatric patients and adult patients following intra-articular infusions of local anesthetics with and without epinephrine for periods of 48 to 72 hours. There is insufficient information to determine whether shorter infusion periods are associated with chondrolysis. The time of onset of symptoms, such as joint pain, stiffness, and loss of motion can be variable, but may begin as early as the second month after surgery. Currently, there is no effective treatment for chondrolysis; patients who have experienced chondrolysis have required additional diagnostic and therapeutic procedures and some required arthroplasty or shoulder replacement.

#### **5.6 Risk of Toxicity in Patients with Hepatic Impairment**

Because amide local anesthetics such as bupivacaine are metabolized by the liver, consider reduced dosing and increased monitoring for bupivacaine systemic toxicity in patients with moderate to severe hepatic impairment who are treated with POSIMIR [*see Use in Specific Populations (8.6)*].

## 5.7 Risk of Use in Patients with Impaired Cardiovascular Function

Care should be taken when considering the use of POSIMIR in patients with impaired cardiovascular function (e.g., hypotension, heartblock) because they may be less able to compensate for functional changes associated with the prolongation of AV conduction produced by bupivacaine. Consider reduced dosing. Monitor patients closely for blood pressure, heart rate, and ECG changes.

## 6 ADVERSE REACTIONS

The following adverse reactions to bupivacaine hydrochloride are described in other sections of the prescribing information:

- Systemic Toxicity with Intravascular Injection [see *Warnings and Precautions (5.3)*]
- Methemoglobinemia [see *Warnings and Precautions (5.4)*]
- Chondrolysis with Intra-Articular Infusion [see *Warnings and Precautions (5.5)*]
- Cardiovascular System Reactions [see *Warnings and Precautions (5.7)*]

### 6.1 Clinical Trials Experience

Because clinical trials are conducted under widely varying conditions, adverse reaction rates observed in the clinical trials of a drug cannot be directly compared to rates observed in the clinical trials of another drug and may not reflect the rates observed in practice.

The safety of POSIMIR, doses ranging from 2.5 mL to 5 mL, was evaluated in 10 randomized, double-blind, controlled trials. Overall, POSIMIR 5 mL, the recommended dose, has been administered to a total of 735 patients in clinical trials using a variety of administration methods, including the recommend method of infiltration. Three trials were controlled with bupivacaine HCl, two trials were controlled with bupivacaine HCl and vehicle placebo, and five trials were controlled with vehicle placebo. An additional 47 patients were treated with saline placebo in one of the bupivacaine HCl-controlled trials. The evaluated surgical procedures included inguinal hernia repair, subacromial decompression of the shoulder, abdominal hysterectomy, laparotomy, laparoscopic cholecystectomy, and laparoscopically-assisted colectomy.

#### Shoulder surgical procedures

There were three studies evaluating the safety of POSIMIR administered during shoulder surgery.

In Study 1, one of three treatments was administered into the subacromial space at the end of surgery: POSIMIR, vehicle placebo, or bupivacaine HCl. [Table 1](#) presents commonly-reported adverse reactions from Study 1.

**Table 1. Commonly Reported Adverse Reactions from Study 1 (Incidence  $\geq$  2% and More Frequent than Bupivacaine HCl or Vehicle Placebo).**

Preferred Term, n (%)	Posimir (N=53)	Bupivacaine HCl (n=29)	Vehicle Placebo (N=25)
Headache	3 (5.7%)	1 (3.4%)	1 (4.0%)
Electrocardiogram T wave inversion	2 (3.8%)	0	0
Hypoesthesia	2 (3.8%)	1 (3.4%)	1 (4.0%)
Pruritus generalized	2 (3.8%)	0	0

In Study 2 and Study 3, patients were administered either POSIMIR or vehicle placebo into the subacromial space at the end of surgery. [Table 2](#) presents commonly-reported adverse reactions from Studies 2 and 3.

**Table 2. Commonly Reported Adverse Reactions Pooled from Study 2 and Study 3 (Incidence ≥ 2% and More Frequent than Vehicle Placebo).**

Preferred Term, n (%)*	Posimir (N=75)	Vehicle Placebo (N=44)
Dizziness	30 (40.3%)	17 (38.3%)
Vomiting	22 (29.0%)	12 (26.6%)
Headache	17 (23.3%)	7 (16.3%)
Paresthesia	14 (18.4%)	7 (15.4%)
Dysgeusia	13 (17.6%)	7 (14.9%)
Hypoesthesia	13 (17.3%)	7 (15.8%)
Tinnitus	10 (13.2%)	3 (6.7%)
Dysuria	8 (10.1%)	4 (10.1%)
Pyrexia	7 (9.3%)	2 (4.6%)
Insomnia	5 (7.1%)	0
Dyspnea	3 (3.8%)	0
Muscle twitching	3 (3.8%)	0
Peripheral swelling	3 (3.9%)	0
Urinary retention	2 (2.7%)	1 (2.1%)
Contusion	2 (2.5%)	0
Dysmenorrhea	2 (2.7%)	0
Incision site pruritus	2 (2.7%)	0
Nasal congestion	2 (2.5%)	0
Pruritus generalized	2 (2.5%)	0

\* Percentages adjusted to account for the different sizes of the pooled studies.

Less common adverse reactions (incidence less than 2% and more frequent than either bupivacaine HCl or vehicle placebo) following POSIMIR administration in shoulder surgical procedures were angina pectoris, blepharospasm, electrocardiogram T wave amplitude decreased, fatigue, osteoarthritis, procedural nausea, procedural pain, and pulmonary arterial hypertension.

Additional follow-up safety data consisting of shoulder MRI, physical examination of the shoulder, and assessments of wound healing were collected at 6 months in Study 1 and at 18 months in Study 2. There were no specific long-term follow-up evaluations for patients treated in Study 3; however, study investigators did not report any cases of chondrolysis in follow-up surveys. All surgical incisions were found to have healed as expected in all three studies. [Table 3](#) presents the results of the MRI and physical examinations for Study 1. [Table 4](#) presents the results of the MRI and physical examinations for Study 2.

**Table 3. 6-Month Follow-up Safety Data from Subacromial Decompression Study 1.**

Safety Evaluation	Posimir	Vehicle Placebo	Bupivacaine HCl
Number enrolled	53	25	29
Shoulder MRI			
Number at 6-month follow-up	51	25	25
Improved <sup>[1]</sup> , n (%)	6 (11.8%)	2 (8.0%)	6 (24.0%)
No change <sup>[1]</sup> , n (%)	31 (60.8%)	14 (56.0%)	9 (36.0%)
Worsened <sup>[1]</sup> , n (%)	14 (27.4%)	9 (36%)	10 (40%)
Constant-Murley score			
Number at 6-month follow-up	52	25	26
Pre-surgery, mean (SD)	44.7 (12.5%)	41.7 (11.7%)	42 (11.3%)
Follow-up, mean (SD)	61.6 (15.2%)	63.2 (12.4%)	65.6 (6.8%)
Decreased from baseline. n (%)	5 (9.6%)	2 (8.0%)	0 (0%)

[1] Compared with pre-surgical MRI

**Table 4. 18-Month Follow-up Safety Data from Subacromial Decompression Study 2.**

Safety Evaluation	Posimir	Vehicle Placebo
Number enrolled	40	20
Shoulder MRI		
Number at 18-month follow-up	27	14
Overall assessment		
Unexpected injuries or findings compared with pre-surgical MRI, n (%)	0	0
New-onset cartilage or bone lesions of concern (not present at baseline and unrelated to surgery or natural disease progression), n (%)	0	0
Glenohumeral joint and humeral head		
Presence of cartilage thinning - humeral head, n (%)		
Grade 0: normal/none	26 (96.3%)	14 (100%)
Grade 1: mild	0	0
Grade 2: moderate	1 (3.7%) <sup>[1]</sup>	0
Grade 3: severe	0	0
Rotator cuff and labrum		
Supraspinatus tendon tear, n (%)		
No tear	16 (59.3%)	5 (35.7%)
Partial	7 (25.9%)	7 (50.0%)
Full thickness	1 (3.7%)	0
Other findings	3 (11.1%)	2 (14.3%)
Supraspinatus - other findings, n (%)		
Interstitial tear	0	0
Tendinosis	2 (7.4%)	1 (7.1%)
Surgically repaired tendon	0	1 (7.1%)
Interstitial tear/tendinosis	1 (3.7%)	0
(blank)	24 (88.9%)	12 (85.7%)
Subacromial space - acromion		
Acromion bony spur, n (%)		
Yes	1 (3.7%)	0
No	26 (96.3%)	14 (100%)
Acromion bone resection, n (%)		
Yes	18 (66.7%)	9 (64.3%)
No	9 (33.3%)	5 (35.7%)
Acromion signal abnormality (edema, fibrosis), n (%)		
Yes	2 (7.4%) <sup>[2]</sup>	2 (14.3%) <sup>[2]</sup>
No	25 (92.6%) <sup>[2]</sup>	12 (85.7%) <sup>[2]</sup>
Acromioclavicular joint		
Bone resection at acromioclavicular joint/postoperative changes, n (%)		
Yes	10 (37.0%)	4 (28.6%)
No	16 (59.3%)	10 (71.4%)
Not evaluable	1 (3.7%)	0
Joint effusion/synovitis, n (%)		
Grade 0: normal/none	9 (33.3%)	2 (14.3%)
Grade 1: mild	9 (33.3%) <sup>[3]</sup>	7 (50.0%)
Grade 2: moderate	3 (11.1%) <sup>[3]</sup>	3 (21.4%) <sup>[3]</sup>
Grade 3: severe	0	1 (7.1%) <sup>[3]</sup>
Not evaluable	6 (22.2%)	1 (7.1%)

Safety Evaluation	Posimir	Vehicle Placebo
Bursa and Soft Tissue		
Subacromial bursa - bursitis/excess fluid, n (%)		
Grade 0: normal/none	18 (66.7%)	5 (35.7%)
Grade 1: mild	6 (22.2%)	9 (64.3%) <sup>[4]</sup>
Grade 2: moderate	3 (11.1%)	0
Grade 3: severe	0	0
Physical Exam		
Number at 18-month follow-up	31	16
Clinical assessment, n (%)		
Normal	27 (87.1%)	13 (81.3%)
Abnormal	4 (12.9%)	3 (18.8%)
Pain intensity, 0-10 scale		
Mean (SE)	0.9 (0.4%)	1.2 (0.6%)
Positive impingement sign, n (%)		
Yes	3 (9.7%)	3 (18.8%)
No	28 (90.3%)	13 (81.3%)
Full passive range of motion, n (%)		
Yes	27 (87.1%)	13 (81.3%)
No	4 (12.9%)	3 (18.8%)

- [1] The humeral head cartilage thinning was unchanged from baseline.
- [2] Two POSIMIR patients were positive for signal abnormalities at baseline and negative at 18 months. Two POSIMIR patients were negative for signal abnormalities at baseline and positive at 18 months. One placebo patient was positive for signal abnormality at baseline and negative at 18 months. Two placebo patients were positive for signal abnormalities at both baseline and 18 months.
- [3] Two POSIMIR patients had joint effusion/synovitis that improved from moderate at baseline to mild at 18 months. One POSIMIR patient had joint effusion/synovitis that improved from severe at baseline to mild at 18 months. Four patients (1 POSIMIR, 3 placebo) had joint effusion/synovitis that worsened from mild at baseline to moderate at 18 months. One placebo patient had joint effusion/synovitis that worsened from mild at baseline to severe at 18 months.
- [4] One placebo patient had bursitis/excess fluid that was severe at baseline and mild at 18 months.

#### Soft tissue surgical procedures

There were two studies evaluating the safety of POSIMIR in patients undergoing inguinal hernia repair (hernioplasty). Patients in these studies were administered either POSIMIR 5 mL or vehicle placebo; 2.5 mL administered into the floor of the inguinal canal and 2.5 mL administered into the subcutaneous space. [Table 5](#) presents commonly-reported adverse reactions from these studies.

**Table 5. Commonly Reported Adverse Reactions Pooled from Studies in Inguinal Hernia Repair (Incidence ≥ 2% and More Frequent than Placebo)**

Preferred Term, n (%)*	Posimir (N=69)	Vehicle Placebo (N=53)
Bradycardia	16 (22.9%)	7 (14.2%)
Pruritus †	15 (21.6%)	9 (17.5%)
Post procedural contusion (bruising)	10 (14.0%)	5 (10.1%)
Vomiting	6 (9.4%)	4 (7.4%)
Incision site swelling	4 (6.0%)	3 (5.7%)
Dyspepsia	4 (5.7%)	2 (3.7%)
Pyrexia	4 (6.0%)	2 (4.0%)
Contusion	4 (5.7%)	0
Back pain	3 (4.1%)	2 (3.4%)
Viral infection	3 (4.1%)	2 (4.0%)
Incision site erythema	3 (4.1%)	0

Preferred Term, n (%)*	Posimir (N=69)	Vehicle Placebo (N=53)
Oropharyngeal pain	3 (4.6%)	0
Tachycardia	3 (4.6%)	0
Upper respiratory tract infection	2 (3.0%)	1 (2.0%)
Dry throat	2 (3.2%)	0
Hyperhidrosis	2 (3.0%)	0
Hypertension	2 (2.8%)	0
Local swelling	2 (3.0%)	0
Testicular swelling	2 (3.2%)	0

\* Percentages adjusted to account for the different sizes of the pooled studies.

† Incision site pruritus, generalized pruritus, and genital pruritus were also reported, but none had incidence  $\geq 2\%$  and more frequent than placebo.

There were five studies evaluating the safety of POSIMIR in laparoscopic, laparoscopically-assisted, or open abdominal surgeries.

In two studies in patients undergoing laparoscopic cholecystectomy, POSIMIR or bupivacaine HCl was administered into the laparoscopic port incisions at the end of surgery. In one of these studies, a subset of patients received either POSIMIR or saline placebo. In a study of patients undergoing laparoscopically-assisted colectomy, POSIMIR or vehicle placebo was administered predominantly into the hand port incision at the end of surgery. In a study of patients undergoing laparotomy, POSIMIR or bupivacaine HCl was administered into the full length of the surgical incision at the end of surgery. Table 6 presents commonly-reported adverse reactions from these four studies. Table 7 and Table 8 present, respectively, surgical-site adverse reactions and early-occurring central nervous system (CNS)-related adverse reactions from the laparoscopic cholecystectomy study that included a saline placebo control arm.

**Table 6. Commonly Reported Adverse Reactions Pooled from Laparoscopic, Laparoscopically-Assisted, and Open Abdominal Surgery Studies (Incidence  $\geq 2\%$  and More Frequent than Bupivacaine HCl or Placebo).**

Preferred Term, n (%)*	Posimir (N=337)	Bupivacaine HCl (N=186)	Vehicle Placebo (N=78)
Post procedural contusion (bruising)	231 (71.2%)	119 (61.8%)	41 (52.6%)
Nausea	189 (55.8%)	111 (59.6%)	40 (51.3%)
Constipation	112 (35.2%)	80 (41.8%)	8 (10.3%)
Somnolence	92 (30.4%)	80 (41.0%)	3 (3.8%)
Headache	86 (27.2%)	63 (32.3%)	12 (15.4%)
Dizziness	75 (23.5%)	58 (30.1%)	6 (7.7%)
Vomiting	66 (19.4%)	39 (21.0%)	6 (7.7%)
Dysgeusia	50 (16.2%)	33 (16.9%)	2 (2.6%)
Pruritus†	45 (14.3%)	36 (18.7%)	5 (6.4%)
Procedural pain	35 (11.4%)	35 (17.8%)	0
Diarrhea	34 (9.8%)	10 (5.5%)	10 (12.8%)
Incision site hemorrhage	30 (8.7%)	6 (3.0%)	3 (3.8%)
Pyrexia	29 (8.2%)	10 (5.7%)	11 (14.1%)
Abdominal distension	29 (8.2%)	8 (4.8%)	12 (15.4%)
Incision site erythema	29 (8.1%)	5 (2.7%)	10 (12.8%)
Post procedural discharge	26 (7.5%)	8 (4.4%)	7 (9.0%)
Paresthesia	23 (7.5%)	25 (13.1%)	2 (2.6%)

Preferred Term, n (%)*	Posimir (N=337)	Bupivacaine HCl (N=186)	Vehicle Placebo (N=78)
Hypokalemia	22 (5.9%)	2 (1.4%)	10 (12.8%)
Incision site hematoma	18 (5.2%)	3 (1.7%)	4 (5.1%)
Anemia	17 (4.5%)	1 (0.7%)	7 (9.0%)
Flatulence	16 (4.6%)	7 (4.0%)	8 (10.3%)
Hypertension	16 (4.6%)	7 (3.6%)	1 (1.3%)
Incision site infection	16 (4.5%)	4 (2.5%)	2 (2.6%)
Musculoskeletal pain	15 (4.2%)	8 (4.9%)	0
Abdominal pain	15 (4.4%)	1 (0.5%)	1 (1.3%)
Insomnia	14 (3.9%)	5 (2.9%)	7 (9.0%)
Dyspepsia	13 (3.8%)	3 (1.9%)	4 (5.1%)
Wound dehiscence	13 (3.6%)	3 (1.5%)	5 (6.4%)
Cough	12 (3.6%)	3 (1.8%)	1 (1.3%)
Oropharyngeal pain	12 (3.5%)	2 (1.0%)	0
Urinary retention	10 (2.8%)	2 (1.2%)	4 (5.1%)
Chest pain	10 (2.9%)	1 (0.5%)	1 (1.3%)
Ileus	10 (2.7%)	1 (0.7%)	3 (3.8%)
Body temperature increased	9 (2.4%)	0	2 (2.6%)
Abdominal pain upper	8 (2.5%)	2 (1.0%)	0
Rash	7 (2.1%)	7 (3.8%)	1 (1.3%)
Pain in extremity	7 (2.1%)	5 (2.8%)	1 (1.3%)
Dry mouth	7 (2.2%)	2 (1.0%)	1 (1.3%)
Nasopharyngitis	7 (2.1%)	0	0

\* Percentages adjusted to account for the different sizes of the pooled studies.

† Incision site pruritus, generalized pruritus, eye pruritus, anal pruritus, and infusion site pruritus were also reported, but none had incidence  $\geq 2\%$  and more frequent than placebo.

**Table 7. Incidence of Surgical Site Adverse Reactions from Laparoscopic Cholecystectomy Study with Saline Placebo and Bupivacaine HCl Controls.**

Prespecified Term*, n (%)	Saline Placebo Control		Bupivacaine HCl Control	
	Posimir (N=45)	Saline Placebo (N=47)	Posimir (N=148)	Bupivacaine HCl (N=148)
Visible bruising	41 (91.1%)	33 (70.2%)	142 (95.9%)	105 (70.9%)
Surgical site bleeding	22 (48.9%)	20 (42.6%)	19 (12.8%)	24 (16.2%)
Drainage from surgical incision(s)	2 (4.4%)	3 (6.4%)	11 (7.4%)	6 (4.1%)
Wound hematoma	0	0	6 (4.1%)	2 (1.4%)
Wound dehiscence	0	0	2 (1.4%)	3 (2.0%)
Surgical site infection	0	0	2 (1.4%)	1 (0.7%)

\*Terms were prespecified for examination by a blinded assessor on postoperative days 0, 4, 7, 14, 28, and 59.

**Table 8. CNS-related Adverse Reactions Solicited from Subjects at 6 Hours Post-surgery in Laparoscopic Cholecystectomy Study with Saline Placebo and Bupivacaine HCl Controls.**

Dictionary-Derived Term (Symptom)*	Saline Placebo Control		Bupivacaine HCl Control	
	Posimir (N=45)	Saline Placebo (N=47)	Posimir (N=148)	Bupivacaine HCl (N=148)
<b>Entire study, n (%)</b>				
Somnolence (Drowsiness)	18 (40.0%)	16 (34.0%)	60 (40.5%)	48 (32.4%)
Nausea (Nausea)	9 (20.0%)	13 (27.7%)	48 (32.4%)	57 (38.5%)
Dizziness (Dizziness)	3 (6.7%)	3 (6.4%)	28 (18.9%)	31 (20.9%)
Headache (Headache)	5 (11.1%)	4 (8.5%)	23 (15.5%)	18 (12.2%)
Vomiting (Vomiting)	2 (4.4%)	3 (6.4%)	10 (6.8%)	15 (10.1%)
Constipation (Constipation)	0 (0.0%)	4 (8.5%)	9 (6.1%)	10 (6.8%)
Pruritus (Itching)	1 (2.2%)	1 (2.1%)	6 (4.1%)	5 (3.4%)
<b>Subset of study, n (%)</b>	<b>N=23</b>	<b>N=22</b>		
Dysgeusia (Metallic taste in mouth)	3 (13.0%)	2 (9.1%)	26 (17.6%)	22 (14.9%)
Paresthesia (Tingling)	0	0	2 (1.4%)	6 (4.1%)
Hypoesthesia (Numbness)	0	0	1 (0.7%)	1 (0.7%)

\* Patients responded to a 10-symptom checklist (7 symptoms for part of the saline placebo-controlled portion of the study).

In a study of patients undergoing total abdominal hysterectomy, POSIMIR, vehicle placebo, or bupivacaine HCl was administered into the surgical incision at the end of surgery. Table 9 presents commonly-reported adverse reactions from this study.

**Table 9. Commonly Reported Adverse Reactions from Total Abdominal Hysterectomy Study (Incidence ≥ 2% and More Frequent than Bupivacaine HCl).**

Preferred Term	Posimir (N=60)	Bupivacaine HCl (N=27)	Vehicle Placebo (N=27)
Post procedural contusion (bruising)	36 (60.0%)	0	9 (33.3%)
Anemia	10 (16.7%)	3 (11.1%)	4 (14.8%)
Dizziness	9 (15.0%)	4 (14.8%)	3 (11.1%)
Vomiting	9 (15.0%)	4 (14.8%)	8 (29.6%)
C-reactive protein increased	7 (11.7%)	1 (3.7%)	0
Pyrexia	7 (11.7%)	7 (25.9%)	3 (11.1%)
Somnolence	5 (8.3%)	2 (7.4%)	0
Blood potassium decreased	4 (6.7%)	0	1 (3.7%)
Hypertension	4 (6.7%)	2 (7.4%)	1 (3.7%)
Incision site hematoma	3 (5.0%)	0	0
Electrocardiogram change	2 (3.3%)	0	0
Procedural hemorrhage	2 (3.3%)	0	0
Vaginal hematoma	2 (3.3%)	0	0

Less common adverse reactions (incidence less than 2% and more frequent than either bupivacaine HCl or placebo) following POSIMIR administration in soft tissue surgical procedures were: application site irritation, atrial fibrillation, drug eruption, electrocardiogram QT prolonged, eructation, erythema, excessive granulation tissue, fatigue, genital pain, heart rate increased, hiccups, hypoesthesia, hypogeusia, incision site cellulitis, incision site erosion, incision site hypoesthesia, incision site inflammation, incision site edema, incision site pain, incision site rash, mean arterial pressure increased, micturition urgency,

night sweats, overdose, palpitations, procedural hypertension, pruritus generalized, rash generalized, seroma, sinus tachycardia, skin discoloration, tinnitus, and wound hemorrhage.

## 7 DRUG INTERACTIONS

Do not dilute or mix POSIMIR with local anesthetics or other drugs or diluents.

Avoid additional use of local anesthetics within 168 hours following administration of POSIMIR.

### 7.1 Drugs Associated with Methemoglobinemia

Patients who are administered POSIMIR are at increased risk of developing methemoglobinemia when concurrently exposed to following drugs, which could include other local anesthetics [*see Warnings and Precautions (5.4)*].

#### Examples of Drugs Associated with Methemoglobinemia:

Class	Examples
Nitrates/Nitrites	nitric oxide, nitroglycerin, nitroprusside, nitrous oxide
Local anesthetics	articaine, benzocaine, bupivacaine, lidocaine, mepivacaine, prilocaine, procaine, ropivacaine, tetracaine
Antineoplastic agents	cyclophosphamide, flutamide, hydroxyurea, ifosfamide, rasburicase
Antibiotics	dapsone, nitrofurantoin, para-aminosalicylic acid, sulfonamides
Antimalarials	chloroquine, primaquine
Anticonvulsants	phenobarbital, phenytoin, sodium valproate
Other drugs	acetaminophen, metoclopramide, quinine, sulfasalazine

## 8 USE IN SPECIFIC POPULATIONS

### 8.1 Pregnancy

#### Risk Summary

There are no studies conducted with POSIMIR in pregnant women. In animal studies, embryo-fetal lethality was noted when bupivacaine was administered subcutaneously to pregnant rabbits during organogenesis at 0.6 times the maximum recommended human dose of POSIMIR at 660 mg bupivacaine. Decreased pup survival was observed in a rat pre- and post-natal development study (dosing from implantation through weaning) at 0.6 times the maximum recommended human dose of POSIMIR at 660 mg bupivacaine. Based on animal data, advise pregnant women of the potential risks to a fetus. [*see Data*]

The background risk of major birth defects and miscarriage for the indicated population is unknown. However, the background risk in the U.S. general population of major birth defects is 2%-4% and of miscarriage is 15%-20% of clinically recognized pregnancies.

#### Clinical Considerations

##### *Labor or Delivery*

Bupivacaine is contraindicated for obstetrical paracervical block anesthesia. While POSIMIR has not been studied with this technique, the use of bupivacaine for obstetrical paracervical block anesthesia has resulted in fetal bradycardia and death. Bupivacaine can rapidly cross the placenta, and when used for epidural, caudal, or pudendal block anesthesia, can cause varying degrees of maternal, fetal, and neonatal toxicity (POSIMIR is not indicated for these uses). The incidence and degree of toxicity depend upon the procedure performed, the type, and amount of drug used, and the technique of drug administration. Adverse reactions in the parturient, fetus, and neonate involve alterations of the central nervous system, peripheral vascular tone, and cardiac function.

## Data

### *Animal Data*

Bupivacaine hydrochloride produced developmental toxicity when administered subcutaneously to pregnant rats and rabbits at clinically relevant doses.

Bupivacaine hydrochloride was administered subcutaneously to rats at doses of 4.4, 13.3, & 40 mg/kg and to rabbits at doses of 1.3, 5.8, & 22.2 mg/kg during the period of organogenesis (implantation to closure of the hard palate). The high doses are approximately 0.6 times the daily maximum recommended human dose (MRHD) of 660 mg/day on a mg/m<sup>2</sup> body surface area (BSA) basis. No embryo-fetal effects were observed in rats at the high dose which caused increased maternal lethality. An increase in embryo-fetal deaths was observed in rabbits at the high dose in the absence of maternal toxicity with the fetal No Observed Adverse Effect Level representing approximately 0.2 times the MRHD on a BSA basis.

In a rat pre- and post-natal developmental study (dosing from implantation through weaning) conducted at subcutaneous doses of 4.4, 13.3, & 40 mg/kg, decreased pup survival was observed at the high dose. The high dose is approximately 0.6 times the daily MRHD of 660 mg/day on a BSA basis.

## **8.2 Lactation**

### Risk Summary

POSIMIR has not been studied in nursing mothers. Bupivacaine can persist in plasma for up to 168 hours [see *Clinical Pharmacology* (12)] and benzyl alcohol, a POSIMIR excipient, for up to 12 hours after POSIMIR administration. Both bupivacaine and benzyl alcohol have been reported to be excreted in human milk. The developmental and health benefits of breastfeeding should be considered along with the mother's clinical need for POSIMIR and any potential adverse effects on the breastfed infant from POSIMIR or from the underlying maternal condition.

## **8.4 Pediatric Use**

Safety and effectiveness of POSIMIR in pediatric patients below the age of 18 have not been established.

## **8.5 Geriatric Use**

Of the total number of patients enrolled in the POSIMIR clinical studies (N=1463), 167 patients were older than 65 years and 32 patients were older than 75 years.

In bupivacaine clinical studies, differences in various pharmacokinetic parameters have been observed between elderly and younger adult patients. Bupivacaine is known to be substantially excreted by the kidney, and the risk of adverse reactions to bupivacaine may be greater in patients with impaired renal function. Because elderly patients are more likely to have decreased renal function, care should be taken in dose selection, and it may be useful to monitor renal function. Elderly patients may require lower doses of POSIMIR. Consider increased monitoring for local anesthetic systemic toxicity when administering POSIMIR to elderly patients.

## **8.6 Hepatic Impairment**

Because amide-type local anesthetics, such as bupivacaine, are metabolized by the liver, these drugs should be used with caution in patients with hepatic impairment. Patients with severe hepatic impairment, because of their inability to metabolize local anesthetics normally, are at a greater risk of developing toxic plasma concentrations, and potentially local anesthetic systemic toxicity. Care should be taken when considering the use of POSIMIR in patients with impaired hepatic function and consider reduced dosing. Consider increased monitoring for local anesthetic systemic toxicity in patients with moderate to severe hepatic impairment when administering POSIMIR.

## 8.7 Renal Impairment

Bupivacaine is known to be substantially excreted by the kidney, and the risk of adverse reactions to this drug may be greater in patients with impaired renal function. Care should be taken when considering the use of POSIMIR in patients with impaired renal function. Consider increased monitoring for local anesthetic systemic toxicity when administering POSIMIR to patients with impaired renal function.

## 10 OVERDOSAGE

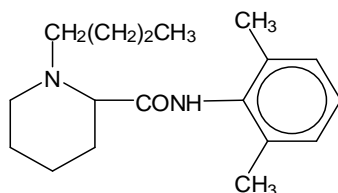
Acute emergencies from local anesthetics are generally related to high plasma concentrations encountered during therapeutic use of local anesthetics or to unintended intravascular injection of local anesthetic solution [see *Warnings and Precautions* (5)].

In the clinical study program, a maximum plasma concentration ( $C_{max}$ ) of 2850 ng/mL was reported. No apparent bupivacaine-related adverse reactions or clinical sequelae were observed in patients with high bupivacaine plasma concentrations.

## 11 DESCRIPTION

POSIMIR (bupivacaine solution) is a sterile nonpyrogenic, clear, light yellow to amber solution for infiltration. Over time, the solution color will intensify within the range, from light yellow to amber. The range of color is not associated with a change in potency of the drug product. POSIMIR contains bupivacaine (132 mg/mL), benzyl alcohol, and sucrose acetate isobutyrate.

Bupivacaine, an amide-type local anesthetic, is 1-butyl-N-(2,6-dimethylphenyl)-2-piperidinecarboxamide. It is a white crystalline powder with a molecular weight of 288.43 g/mol. The structure of bupivacaine is shown below:



Bupivacaine is present in POSIMIR at a concentration of 132 mg/mL.

## 12 CLINICAL PHARMACOLOGY

### 12.1 Mechanism of Action

Bupivacaine blocks the generation and the conduction of nerve impulses, presumably by increasing the threshold for electrical excitation in the nerve, by slowing the propagation of the nerve impulse, and by reducing the rate of rise of the action potential. In general, the progression of anesthesia is related to the diameter, myelination and conduction velocity of affected nerve fibers. Clinically, the order of loss of nerve function is as follows: (1) pain, (2) temperature, (3) touch, (4) proprioception, and (5) skeletal muscle tone.

### 12.2 Pharmacodynamics

Systemic absorption of bupivacaine produces effects on the cardiovascular and central nervous systems. At blood concentrations achieved with therapeutic doses, changes in cardiac conduction, excitability, refractoriness, contractility, and peripheral vascular resistance are minimal. However, toxic blood concentrations depress cardiac conduction and excitability, which may lead to atrioventricular block, ventricular arrhythmias and to cardiac arrest, sometimes resulting in fatalities. In addition, myocardial contractility is depressed and peripheral vasodilation occurs, leading to decreased cardiac output and arterial blood pressure. These cardiovascular changes are more likely to occur after unintended intravascular injection of liquid formulations of bupivacaine.

Following systemic absorption, local anesthetics can produce central nervous system stimulation, depression or both. Apparent central stimulation is usually manifested as restlessness, tremors and shivering, progressing to convulsions, followed by depression and coma, progressing ultimately to respiratory arrest. However, the local anesthetics have a primary depressant effect on the medulla and on higher centers. The depressed stage may occur without a prior excited stage.

### 12.3 Pharmacokinetics

Infiltration of POSIMIR into the surgical wound results in plasma levels of bupivacaine that can persist for 168 hours. Systemic plasma levels of bupivacaine following administration of POSIMIR are not correlated with local efficacy.

#### Absorption

The rate of systemic absorption of bupivacaine is dependent upon the total dose of drug administered, the route of administration, and the vascularity of the administration site.

Pharmacokinetic parameters of bupivacaine are shown in [Table 10](#) after single-dose infiltration of POSIMIR in arthroscopic subacromial decompression surgical procedure.

**Table 10. Summary of Pharmacokinetic Parameters for Bupivacaine after Administration of a Single Dose of POSIMIR 5 mL (660 mg)**

Surgical Procedure		C <sub>max</sub> (ng/mL)	AUC <sub>0-t</sub> <sup>#</sup> (h·ng/mL)	T <sub>max</sub> (h) <sup>^</sup>	T <sub>1/2</sub> (h)
Arthroscopic subacromial decompression Study 1*	N	36	36	36	36
	Mean	593	19395	5.9 <sup>^</sup>	16.4
	SD	299	12056	1.0-24.0 <sup>^</sup>	5.1
Arthroscopic subacromial decompression Study 3	N	18	18	18	18
	Mean	1006	47015	8.0 <sup>^</sup>	26.1
	SD	454	20040	2.1-26.9 <sup>^</sup>	8.2

<sup>#</sup> t = last sampling time

<sup>^</sup> Median/Range (min-max)

\*Drug leakage from the surgical site was suspected.

#### Distribution

Depending upon the route of administration, bupivacaine is distributed to some extent to all body tissues, with high concentrations found in highly perfused organs such as the liver, lungs, heart, and brain.

Bupivacaine appears to cross the placenta by passive diffusion. The rate and degree of diffusion is governed by (1) the degree of plasma protein binding, (2) the degree of ionization, and (3) the degree of lipid solubility. Fetal/maternal ratios of local anesthetics appear to be inversely related to the degree of plasma protein binding, because only the free, unbound drug is available for placental transfer.

Bupivacaine with a high protein binding capacity (95%) has a low fetal/maternal ratio (0.2 to 0.4). The extent of placental transfer is also determined by the degree of ionization and lipid solubility of the drug. Lipid soluble, non-ionized drugs such as bupivacaine readily enter the fetal blood from the maternal circulation.

#### Elimination

The mean half-life of bupivacaine after POSIMIR administration in adults who underwent arthroscopic subacromial decompression range from 16.4 to 26.1 hours.

#### *Metabolism*

Amide-type local anesthetics such as bupivacaine are metabolized primarily in the liver via conjugation with glucuronic acid. Pipecoloxylidine is the major metabolite of bupivacaine. The elimination of drug

from tissue distribution depends largely upon the availability of binding sites in the circulation to carry it to the liver where it is metabolized.

#### *Excretion*

The kidney is the main excretory organ for most local anesthetics and their metabolites. Urinary excretion is affected by urinary perfusion and factors affecting urinary pH. Only 6% of bupivacaine is excreted unchanged in the urine.

#### Specific Populations

##### *Hepatic Impairment*

Pharmacokinetics of POSIMIR have not been evaluated in patients with hepatic impairment. [see *Warnings and Precautions (5)* and *Use in Specific Populations (8.6)*].

##### *Renal Impairment*

Pharmacokinetics of POSIMIR have not been evaluated in patients with renal impairment. [see *Use in Specific Populations (8.7)*].

##### *Geriatric Patients*

Pharmacokinetics of POSIMIR have not been evaluated in geriatric patients.

Elderly patients have exhibited higher peak plasma concentrations than younger patients following administration of bupivacaine HCl. The total plasma clearance was decreased in these patients [see *Use in Specific Populations (8.5)*].

## **13 NONCLINICAL TOXICOLOGY**

### **13.1 Carcinogenesis, Mutagenesis, Impairment of Fertility**

#### Carcinogenesis

Long-term studies in animals to evaluate the carcinogenic potential of bupivacaine hydrochloride have not been conducted.

#### Mutagenesis

Bupivacaine was negative in the in vitro bacterial reverse mutation assay (Ames assay), the in vitro chromosomal aberration assay (human peripheral blood lymphocytes), and the in vivo rat micronucleus assay.

#### Impairment of Fertility

The effect of bupivacaine on fertility has not been determined.

### **13.2 Animal Toxicology and/or Pharmacology**

Necrosis of the joint cartilage was observed following intra-articular injection of a single dose of POSIMIR or POSIMIR vehicle in the dog model.

## **14 CLINICAL STUDIES**

The effectiveness of POSIMIR was evaluated in ten adequate and well-controlled studies in patients undergoing open and laparoscopic abdominal procedures, abdominal hysterectomy, inguinal hernia repair, and open and arthroscopic shoulder procedures. Adequate evidence of effectiveness was demonstrated in one of three studies conducted in patients undergoing shoulder surgery (described in detail below) and was not demonstrated in any soft tissue procedure evaluated.

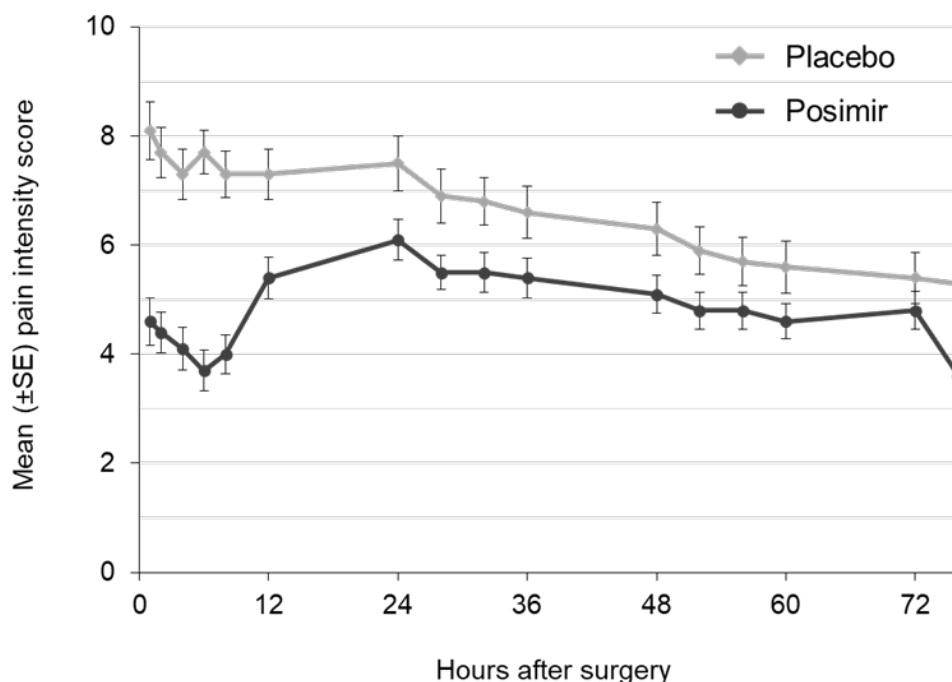
### Study 1

Study 1 was a randomized, multicenter, assessor blinded, placebo-controlled (vehicle) clinical trial in 107 patients undergoing arthroscopic subacromial decompression surgery with an intact rotator cuff. Associated procedures included inspection of the glenohumeral joint, distal clavicle excision, bursectomy, synovectomy, removal of loose body, resection of coracoacromial ligament and subacromial spurs, rotator cuff debridement, and minor debridement of articular cartilage. There were no open surgical procedures performed during this study. The mean age was 50 years (range 21 to 70 years), 60% of treated patients were female, 96% were White, 2% were Hispanic, 1% were Asian, and 1% were Other.

Patients were randomized 2:1:1 to receive POSIMIR, vehicle placebo, or bupivacaine HCl 50 mg, and all patients received general anesthesia. No analgesic pre-medication or local anesthetics were administered. POSIMIR and vehicle placebo were administered under direct arthroscopic visualization as single injections into the subacromial space through one of the arthroscopic portals at the end of the surgery. Bupivacaine HCl 50 mg was administered subacromially as a single dose. Post-operatively, patients received acetaminophen 500 mg or 1000 mg every six hours, depending on body weight, through 72 hours, and were allowed morphine rescue medication as needed, either 2 mg IV or 10 mg orally. Pain intensity was rated by the patients using a 0 to 10 numerical rating scale (NRS) at multiple time points up to 72 hours.

The primary outcome measures were the normalized area under the curve (nAUC) of mean pain intensity on movement scores collected at specified intervals over the first 72 hours after surgery and total opioid rescue analgesia (IV morphine-equivalent dose) through 72 hours. In this clinical study, POSIMIR 5 mL demonstrated a significant reduction in mean pain intensity compared with placebo of 1.3 points on a 0 to 10 NRS scale over 72 hours (Figure 1).

**Figure 1. Mean Pain Intensity on Movement Through 72 Hours After Surgery, Subacromial Decompression Study 1**



The median total use of opioid rescue analgesia (IV morphine equivalent dose) from 0 to 72 hours for the POSIMIR treatment group (4 mg) was statistically lower than for the placebo treatment group (12 mg). The median use of opioid rescue analgesia in the bupivacaine treatment group was 8 mg.

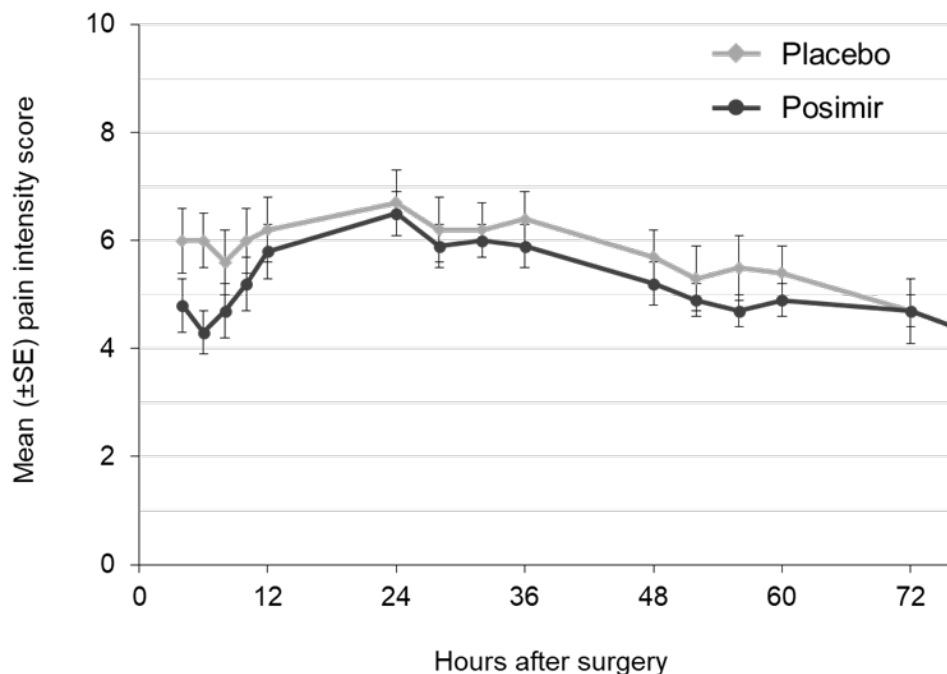
### Study 2

Study 2 was a randomized, double-blind, placebo-controlled (vehicle) clinical trial in 60 patients undergoing arthroscopic subacromial decompression, inspection of glenohumeral joint, synovectomy, removal of loose body, minor debridement of articular cartilage, minor debridement or minor repair of rotator cuff, open distal clavicle excision, bursectomy, and resection of coracoacromial ligament and subacromial spurs. The mean age was 48 years (range 27 to 68 years), 55% of treated patients were female, 95% were White, 2% were Asian, and 2% were Other.

Patients were randomized 2:1 to receive POSIMIR or vehicle placebo, and all patients received general anesthesia. Post-operatively, patients were allowed morphine rescue medication as needed, either 3 mg IV or 10 mg to 15 mg orally, or acetaminophen. Pain intensity was rated by the patients using a 0 to 10 numerical rating scale (NRS) at multiple time points up to 72 hours.

The primary outcome measures were mean pain intensity on movement AUC through 72 hours and total opioid rescue analgesia (IV morphine-equivalent dose) through 72 hours. There was no statistically significant difference in either primary endpoint between the POSIMIR and vehicle placebo treatment groups (Figure 2).

**Figure 2: Mean Pain Intensity on Movement Through 72 Hours After Surgery, Subacromial Decompression Study 2**



### Study 3

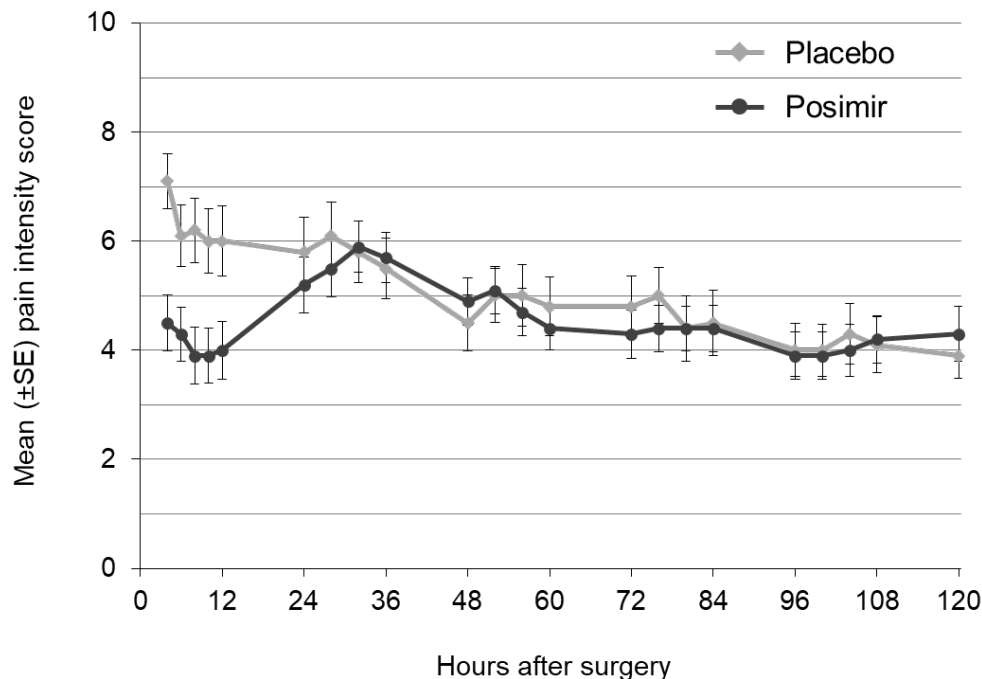
Study 3 was a randomized, double-blind, placebo-controlled (vehicle) and open-label PK clinical trial in 92 patients undergoing a variety of shoulder surgical procedures, including rotator cuff repair, subacromial decompression, glenoid labrum repair or debridement, and biceps tendon repair. The majority of patients underwent arthroscopic procedures; however, six patients underwent a combination of arthroscopic and open procedures. The mean age was 54 years (range 20 to 82 years), 59% of treated patients were male, 87% were White, 8% were African American, 3% were Other, and 2% were Asian.

An equal number of patients were randomized to two cohorts. The routes of POSIMIR or vehicle placebo administration in Cohort 1 were subacromial or subcutaneous injection or a combination. In Cohort 2, POSIMIR or vehicle placebo was administered via injection under direct arthroscopic visualization into

the subacromial space. Surgical procedures were completed either under local or general anesthesia. Post-operatively, patients were allowed morphine IV, oxycodone orally, or acetaminophen orally as needed.

The primary outcome measures were mean pain intensity on movement and at rest through 120 hours and pain control through day seven. There was no statistically significant difference in either primary endpoint between POSIMIR and vehicle placebo treatment groups (Figure 3).

**Figure 3: Mean Pain Intensity on Movement Through 120 Hours After Surgery, Subacromial Decompression Study 3**



## 16 HOW SUPPLIED/STORAGE AND HANDLING

POSIMIR (bupivacaine solution) is available in single-dose vials. It is a sterile nonpyrogenic, clear, light yellow to amber solution in glass vials.

5 mL single-dose vial, 660 mg/5 mL (132 mg/mL) packaged in a 10-unit carton (NDC 54274-001-01)

### Storage

POSIMIR vial should be stored at a controlled room temperature of 20°C to 25°C (68°F to 77°F), excursions permitted to 15°C to 30°C (59°F to 86°F). [See USP Controlled Room Temperature]. Vial should be protected from light and retained in carton until time of use.

### Handling

- Do not administer any solution which contains particulate matter.
- Do not autoclave.
- Do not dilute.
- Discard any unused portion in an appropriate manner.

NDC No.	Container	Size	Quantity
<b>NDC 54274-001-01</b>	<b>Single-dose vials</b>	<b>5 mL</b>	<b>Box of 10</b>

## 17 PATIENT COUNSELING INFORMATION

Patients should be informed in advance that bupivacaine-containing products can cause temporary loss of sensation or motor activity in the area of infiltration. The physician should discuss other information including adverse reactions in the POSIMIR package insert with their patients.

Manufactured for DURECT Corporation, Cupertino, CA 95014 USA

By Renaissance Lakewood, LLC, Lakewood, NJ 08701 USA

This product and its use are covered by US Patent Nos. 8,153,149, 8,153,661, 8,753,665, 8,846,072 and other patents pending.

**Revised: 02/2021**