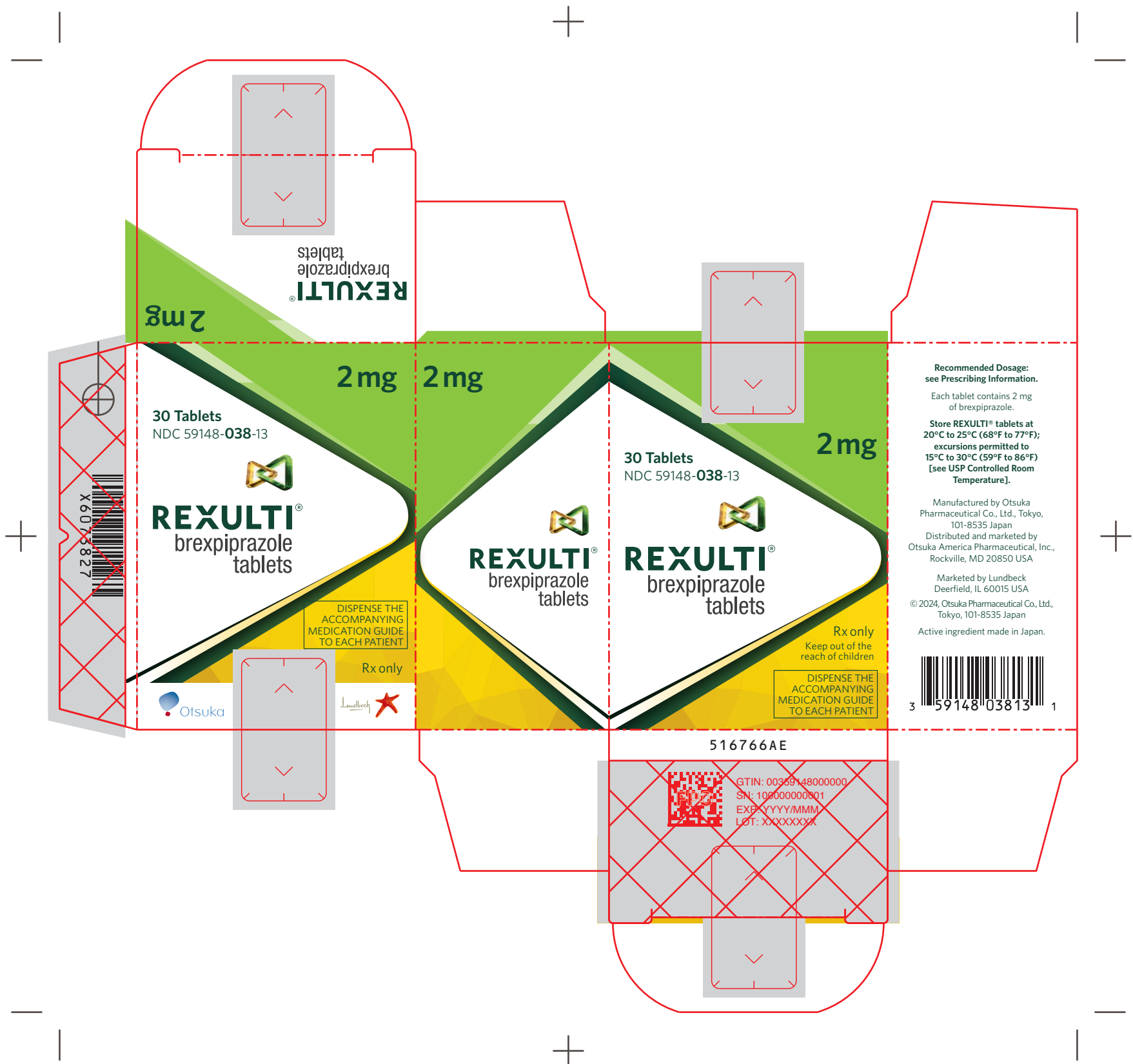


(b) (4)



brexpiprazole
tablets
REXULTI®

2mg

2mg 2mg

30 Tablets
NDC 59148-038-13


REXULTI®
brexpiprazole
tablets

DISPENSE THE
ACCOMPANYING
MEDICATION GUIDE
TO EACH PATIENT

Rx only



30 Tablets
NDC 59148-038-13


REXULTI®
brexpiprazole
tablets

2mg

Rx only
Keep out of the
reach of children

DISPENSE THE
ACCOMPANYING
MEDICATION GUIDE
TO EACH PATIENT

Recommended Dosage:
see Prescribing Information.

Each tablet contains 2 mg
of brexpiprazole.

Store REXULTI® tablets at
20°C to 25°C (68°F to 77°F);
excursions permitted to
15°C to 30°C (59°F to 86°F)
[see USP Controlled Room
Temperature].

Manufactured by Otsuka
Pharmaceutical Co., Ltd., Tokyo,
101-8535 Japan
Distributed and marketed by
Otsuka America Pharmaceutical, Inc.,
Rockville, MD 20850 USA

Marketed by Lundbeck
Deerfield, IL 60015 USA
© 2024, Otsuka Pharmaceutical Co., Ltd.,
Tokyo, 101-8535 Japan

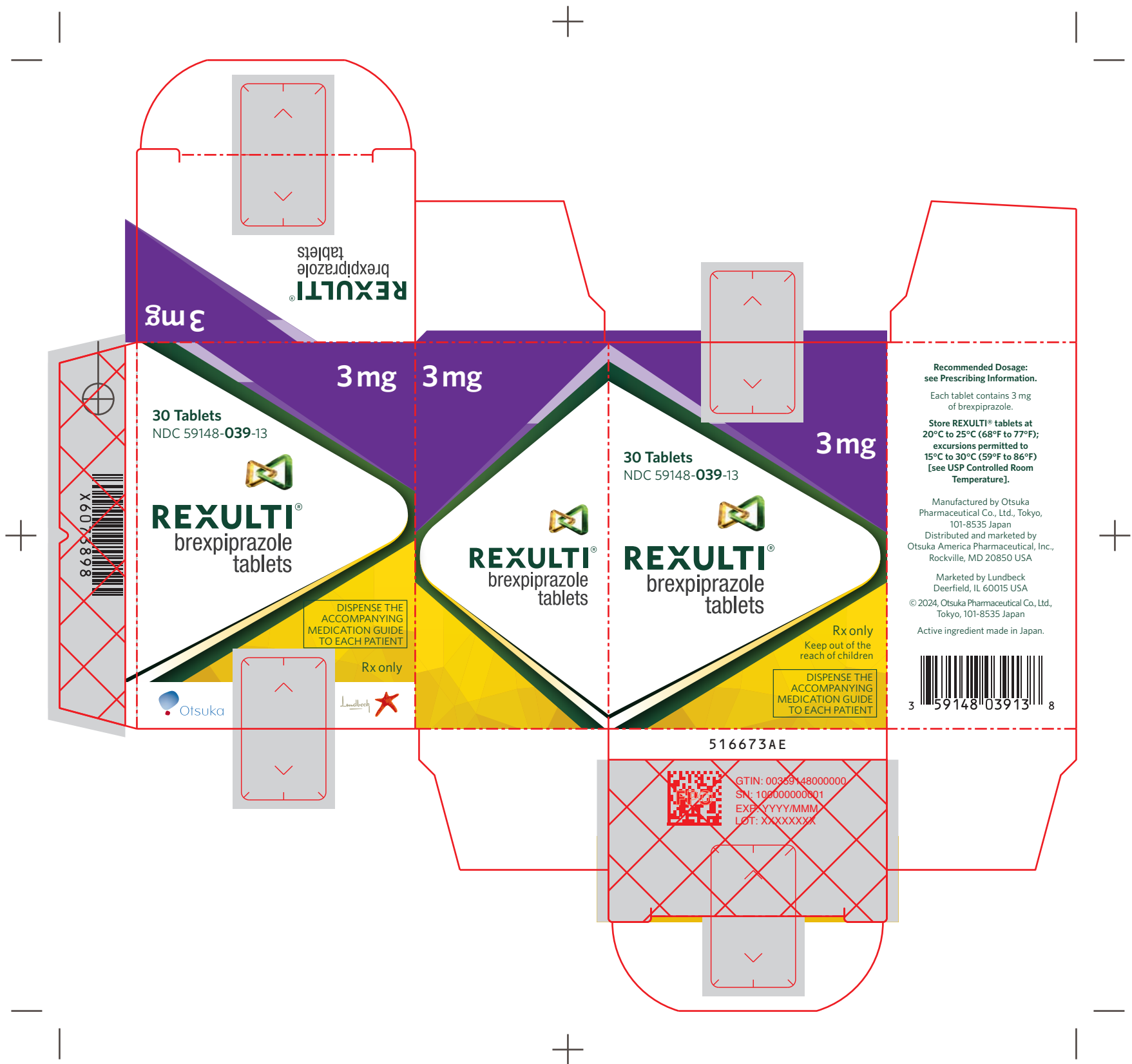
Active ingredient made in Japan.



516766AE



GTIN: 00359148000000
SN: 100000000001
EXP: YYY/MM
LOT: XXXXXXX



REXULTI[®]
brexpiprazole
tablets

3 mg

3 mg

3 mg

3 mg

30 Tablets
NDC 59148-039-13

REXULTI[®]
brexpiprazole
tablets

DISPENSE THE
ACCOMPANYING
MEDICATION GUIDE
TO EACH PATIENT

Rx only



30 Tablets
NDC 59148-039-13

REXULTI[®]
brexpiprazole
tablets

DISPENSE THE
ACCOMPANYING
MEDICATION GUIDE
TO EACH PATIENT

Rx only
Keep out of the
reach of children

Recommended Dosage:
see Prescribing Information.

Each tablet contains 3 mg
of brexpiprazole.

Store REXULTI[®] tablets at
20°C to 25°C (68°F to 77°F);
excursions permitted to
15°C to 30°C (59°F to 86°F)
[see USP Controlled Room
Temperature].

Manufactured by Otsuka
Pharmaceutical Co., Ltd., Tokyo,
101-8535 Japan
Distributed and marketed by
Otsuka America Pharmaceutical, Inc.,
Rockville, MD 20850 USA

Marketed by Lundbeck
Deerfield, IL 60015 USA
© 2024, Otsuka Pharmaceutical Co., Ltd.,
Tokyo, 101-8535 Japan

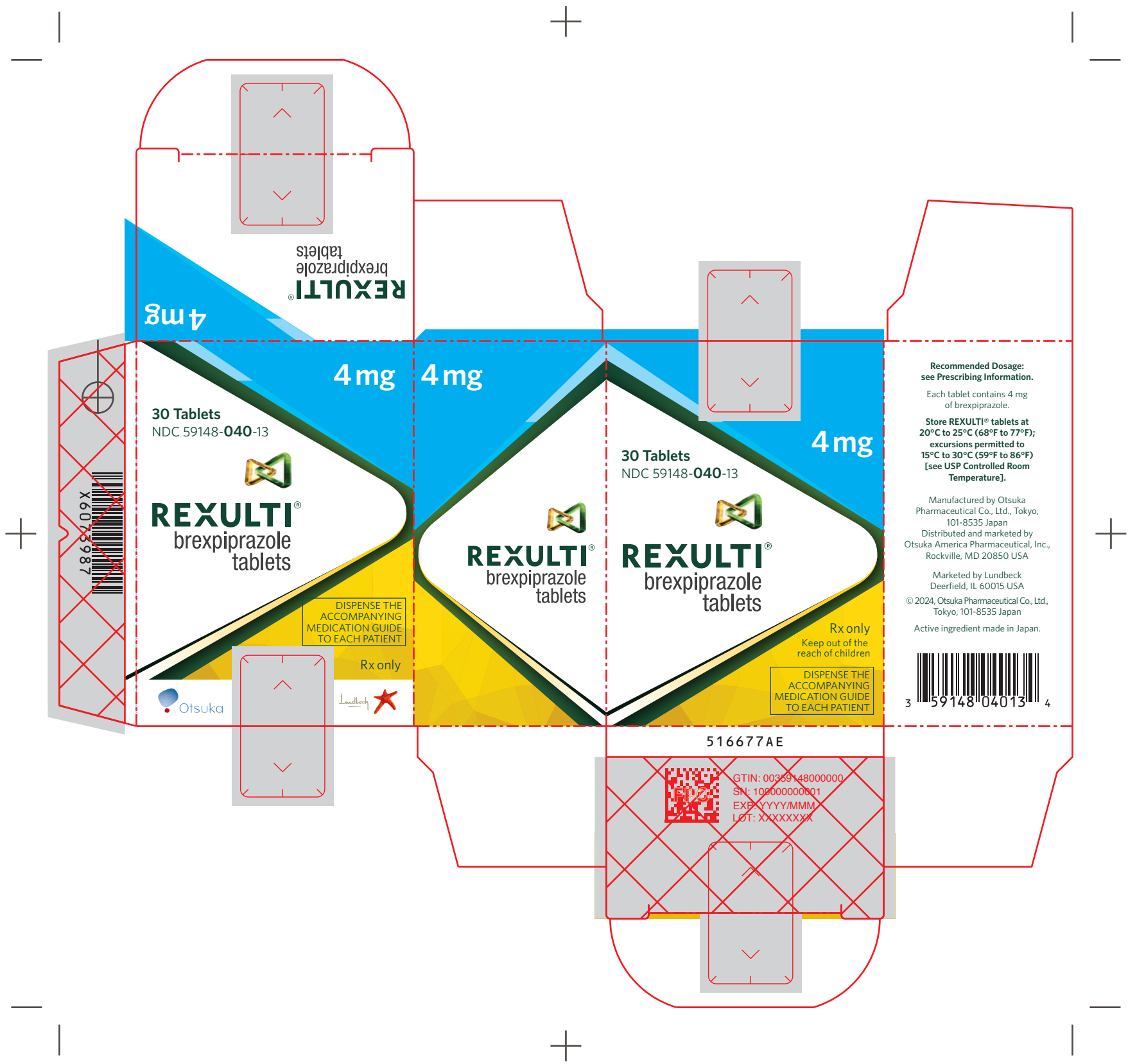
Active ingredient made in Japan.



516673AE



GTIN: 00359148000000
SN: 100000000001
EXP: YYY/MM
LOT: XXXXXXX



Recommended Dosage:
see Prescribing Information.

Each tablet contains 4 mg of brexpiprazole.

Store REXULTI® tablets at 20°C to 25°C (68°F to 77°F); excursions permitted to 15°C to 30°C (59°F to 86°F) [see USP Controlled Room Temperature].

Manufactured by Otsuka Pharmaceutical Co., Ltd., Tokyo, 101-8535 Japan
Distributed and marketed by Otsuka America Pharmaceutical, Inc., Rockville, MD 20850 USA

Marketed by Lundbeck Deerfield, IL 60015 USA

© 2024, Otsuka Pharmaceutical Co., Ltd., Tokyo, 101-8535 Japan
Active ingredient made in Japan.

3 59148 04013 4

516677AE

GTIN: 0035914800000
SN: 10000000001
EXP: YYYY/MMM
LOT: XXXXXXXX