

HIGHLIGHTS OF PRESCRIBING INFORMATION

These highlights do not include all the information needed to use BRIVIACT® safely and effectively. See full prescribing information for BRIVIACT.

BRIVIACT® (brivaracetam) tablets, for oral use, CV
BRIVIACT® (brivaracetam) oral solution, CV
BRIVIACT® (brivaracetam) injection, for intravenous use, CV
Initial U.S. Approval: 2016

-----**RECENT MAJOR CHANGES**-----

Indications and Usage (1) 9/2017
Dosage and Administration (2.1) 9/2017

-----**INDICATIONS AND USAGE**-----

BRIVIACT is indicated for the treatment of partial-onset seizures in patients 16 years of age and older with epilepsy. (1)

-----**DOSAGE AND ADMINISTRATION**-----

- The recommended starting dosage for monotherapy or adjunctive therapy is 50 mg twice daily. Based on individual patient tolerability and therapeutic response, the dosage may be adjusted down to 25 mg twice daily (50 mg per day) or up to 100 mg twice daily (200 mg per day). (2.1)
- BRIVIACT injection may be used when oral administration is temporarily not feasible.
- *Hepatic Impairment*: For all stages of hepatic impairment, the recommended starting dosage is 25 mg twice daily; maximum dosage is 75 mg twice daily. (2.5, 8.7, 12.3)

-----**DOSAGE FORMS AND STRENGTHS**-----

- Tablets: 10 mg, 25 mg, 50 mg, 75 mg, and 100 mg (3)
- Oral solution: 10 mg/mL (3)
- Injection: 50 mg/5 mL single-dose vial (3)

-----**CONTRAINDICATIONS**-----

Hypersensitivity to brivaracetam or any of the inactive ingredients in BRIVIACT. (4)

-----**WARNINGS AND PRECAUTIONS**-----

- *Suicidal Behavior and Ideation*: Monitor patients for suicidal behavior and ideation. (5.1)
- *Neurological Adverse Reactions*: Monitor for somnolence and fatigue, and advise patients not to drive or operate machinery until they have gained sufficient experience on BRIVIACT. (5.2)
- *Psychiatric Adverse Reactions*: Behavioral reactions including psychotic symptoms, irritability, depression, aggressive behavior, and anxiety; monitor patients for symptoms. (5.3)
- *Hypersensitivity: Bronchospasm and Angioedema*: Advise patients to seek immediate medical care. Discontinue and do not restart BRIVIACT if hypersensitivity occurs. (5.4)
- *Withdrawal of Antiepileptic Drugs*: BRIVIACT should be gradually withdrawn. (5.5)

-----**ADVERSE REACTIONS**-----

Most common adverse reactions (at least 5% for BRIVIACT and at least 2% more frequently than placebo) are somnolence/sedation, dizziness, fatigue, and nausea/vomiting. (6.1)

To report SUSPECTED ADVERSE REACTIONS, contact UCB, Inc. at 1-844-599-2273 or FDA at 1-800-FDA-1088 or www.fda.gov/medwatch.

-----**DRUG INTERACTIONS**-----

- *Rifampin*: Because of decreased BRIVIACT concentrations, increasing BRIVIACT dosage in patients on concomitant rifampin is recommended. (2.6, 7.1)
- *Carbamazepine*: Because of increased exposure to carbamazepine metabolite, if tolerability issues arise, consider reducing carbamazepine dosage in patients on concomitant BRIVIACT. (7.2)
- *Phenytoin*: Because phenytoin concentrations can increase, phenytoin levels should be monitored in patients on concomitant BRIVIACT. (7.3)
- *Levetiracetam*: BRIVIACT had no added therapeutic benefit when co-administered with levetiracetam. (7.4)

-----**USE IN SPECIFIC POPULATIONS**-----

Pregnancy: Based on animal data, may cause fetal harm. (8.1)

See 17 for PATIENT COUNSELING INFORMATION and Medication Guide.

Revised: 9/2017

FULL PRESCRIBING INFORMATION: CONTENTS*

1 INDICATIONS AND USAGE
2 DOSAGE AND ADMINISTRATION
2.1 Dosage Information
2.2 Administration Instructions for BRIVIACT Tablets and BRIVIACT Oral Solution
2.3 Preparation and Administration Instructions for BRIVIACT Injection
2.4 Discontinuation of BRIVIACT
2.5 Patients with Hepatic Impairment
2.6 Co-administration with Rifampin
3 DOSAGE FORMS AND STRENGTHS
4 CONTRAINDICATIONS
5 WARNINGS AND PRECAUTIONS
5.1 Suicidal Behavior and Ideation
5.2 Neurological Adverse Reactions
5.3 Psychiatric Adverse Reactions
5.4 Hypersensitivity: Bronchospasm and Angioedema
5.5 Withdrawal of Antiepileptic Drugs
6 ADVERSE REACTIONS
6.1 Clinical Trials Experience
7 DRUG INTERACTIONS
7.1 Rifampin
7.2 Carbamazepine
7.3 Phenytoin
7.4 Levetiracetam

8 USE IN SPECIFIC POPULATIONS
8.1 Pregnancy
8.2 Lactation
8.4 Pediatric Use
8.5 Geriatric Use
8.6 Renal Impairment
8.7 Hepatic Impairment
9 DRUG ABUSE AND DEPENDENCE
9.1 Controlled Substance
9.2 Abuse
9.3 Dependence
10 OVERDOSAGE
11 DESCRIPTION
12 CLINICAL PHARMACOLOGY
12.1 Mechanism of Action
12.2 Pharmacodynamics
12.3 Pharmacokinetics
13 NONCLINICAL TOXICOLOGY
13.1 Carcinogenesis, Mutagenesis, Impairment of Fertility
14 CLINICAL STUDIES
16 HOW SUPPLIED/STORAGE AND HANDLING
16.1 How Supplied
16.2 Storage and Handling
17 PATIENT COUNSELING INFORMATION

*Sections or subsections omitted from the full prescribing information are not listed.

FULL PRESCRIBING INFORMATION

1 INDICATIONS AND USAGE

BRIVIACT is indicated for the treatment of partial-onset seizures in patients 16 years of age and older with epilepsy.

2 DOSAGE AND ADMINISTRATION

2.1 Dosage Information

Monotherapy or Adjunctive Therapy

When initiating treatment, gradual dose escalation is not required. The recommended starting dosage is 50 mg twice daily (100 mg per day). Based on individual patient tolerability and therapeutic response, the dosage may be adjusted down to 25 mg twice daily (50 mg per day) or up to 100 mg twice daily (200 mg per day) [see *Clinical Studies (14)*].

BRIVIACT injection may be used when oral administration is temporarily not feasible. BRIVIACT injection should be administered at the same dosage and same frequency as BRIVIACT tablets and oral solution.

The clinical study experience with BRIVIACT injection is limited to 4 consecutive days of treatment.

2.2 Administration Instructions for BRIVIACT Tablets and BRIVIACT Oral Solution

BRIVIACT can be initiated with either intravenous or oral administration.

BRIVIACT tablets and oral solution may be taken with or without food.

BRIVIACT Tablets

BRIVIACT tablets should be swallowed whole with liquid. BRIVIACT tablets should not be chewed or crushed.

BRIVIACT Oral Solution

A calibrated measuring device is recommended to measure and deliver the prescribed dose accurately. A household teaspoon or tablespoon is not an adequate measuring device.

When using BRIVIACT oral solution, no dilution is necessary. BRIVIACT oral solution may also be administered using a nasogastric tube or gastrostomy tube.

Discard any unused BRIVIACT oral solution remaining after 5 months of first opening the bottle.

2.3 Preparation and Administration Instructions for BRIVIACT Injection

BRIVIACT injection is for intravenous use only.

Preparation

BRIVIACT injection can be administered intravenously without further dilution or may be mixed with diluents listed below.

Diluents

0.9% Sodium Chloride injection, USP
Lactated Ringer's injection
5% Dextrose injection, USP

Administration

BRIVIACT injection should be administered intravenously over 2 to 15 minutes.

Parenteral drug products should be inspected visually for particulate matter and discoloration prior to administration, whenever solution and container permit. Product with particulate matter or discoloration should not be used. BRIVIACT injection is for single dose only.

Storage and Stability

The diluted solution should not be stored for more than 4 hours at room temperature and may be stored in polyvinyl chloride (PVC) bags. Discard any unused portion of the BRIVIACT injection vial contents.

2.4 Discontinuation of BRIVIACT

Avoid abrupt withdrawal from BRIVIACT in order to minimize the risk of increased seizure frequency and status epilepticus [see *Warnings and Precautions (5.5) and Clinical Studies (14)*].

2.5 Patients with Hepatic Impairment

For all stages of hepatic impairment, the recommended starting dosage is 25 mg twice daily (50 mg per day) and the recommended maximum dosage is 75 mg twice daily (150 mg per day) [see *Use in Specific Populations (8.7) and Clinical Pharmacology (12.3)*].

2.6 Co-administration with Rifampin

Increase the BRIVIACT dosage in patients on concomitant rifampin by up to 100% (i.e., double the dosage) [see *Drug Interactions (7.1) and Clinical Pharmacology (12.3)*].

3 DOSAGE FORMS AND STRENGTHS

Tablets

- 10 mg: white to off white, round, film-coated, and debossed with "u10" on one side.
- 25 mg: grey, oval, film-coated, and debossed with "u25" on one side.
- 50 mg: yellow, oval, film-coated, and debossed with "u50" on one side.
- 75 mg: purple, oval, film-coated, and debossed with "u75" on one side.
- 100 mg: green-grey, oval, film-coated, and debossed with "u100" on one side.

Oral Solution

- 10 mg/mL: slightly viscous, clear, colorless to yellowish, raspberry-flavored liquid.

Injection

- 50 mg in 5 mL in one single-dose vial. It is a clear, colorless, sterile solution.

4 CONTRAINDICATIONS

Hypersensitivity to brivaracetam or any of the inactive ingredients in BRIVIACT (bronchospasm and angioedema have occurred) [see *Warnings and Precautions (5.4)*].

5 WARNINGS AND PRECAUTIONS

5.1 Suicidal Behavior and Ideation

Antiepileptic drugs (AEDs), including BRIVIACT, increase the risk of suicidal thoughts or behavior in patients taking these drugs for any indication. Patients treated with any AED for any indication should be monitored for the emergence or worsening of depression, suicidal thoughts or behavior, and/or any unusual changes in mood or behavior.

Pooled analyses of 199 placebo-controlled clinical trials (mono- and adjunctive therapy) of 11 different AEDs showed that patients randomized to one of the AEDs had approximately twice the risk (adjusted Relative Risk 1.8, 95% CI:1.2, 2.7) of suicidal thinking or behavior compared to patients randomized to placebo. In these trials, which had a median treatment duration of 12 weeks, the estimated incidence rate of suicidal behavior or ideation among 27,863 AED-treated patients was 0.43%, compared to 0.24% among 16,029 placebo-treated patients, representing an increase of approximately one case of suicidal thinking or behavior for every 530 patients treated. There were four suicides in drug-treated patients in the trials and none in placebo-treated patients, but the number is too small to allow any conclusion about drug effect on suicide.

The increased risk of suicidal thoughts or behavior with AEDs was observed as early as one week after starting drug treatment with AEDs and persisted for the duration of treatment assessed. Because most trials included in the analysis did not extend beyond 24 weeks, the risk of suicidal thoughts or behavior beyond 24 weeks could not be assessed.

The risk of suicidal thoughts or behavior was generally consistent among drugs in the data analyzed. The finding of increased risk with AEDs of varying mechanisms of action and across a range of indications suggests that the risk applies to all AEDs used for any indication. The risk did not vary substantially by age (5-100 years) in the clinical trials analyzed. Table 1 shows absolute and relative risk by indication for all evaluated AEDs.

Table 1: Risk of Suicidal Thoughts or Behaviors by Indication for Antiepileptic Drugs in the Pooled Analysis

Indication	Placebo Patients with Events Per 1000 Patients	Drug Patients with Events Per 1000 Patients	Relative Risk: Incidence of Events in Drug Patients/Incidence in Placebo Patients	Risk Difference: Additional Drug Patients with Events Per 1000 Patients
Epilepsy	1.0	3.4	3.5	2.4
Psychiatric	5.7	8.5	1.5	2.9
Other	1.0	1.8	1.9	0.9
Total	2.4	4.3	1.8	1.9

The relative risk for suicidal thoughts or behavior was higher in clinical trials in patients with epilepsy than in clinical trials in patients with psychiatric or other conditions, but the absolute risk differences were similar for the epilepsy and psychiatric indications.

Anyone considering prescribing BRIVIACT or any other AED must balance the risk of suicidal thoughts or behaviors with the risk of untreated illness. Epilepsy and many other illnesses for which AEDs are prescribed are themselves associated with morbidity and mortality and an increased risk of suicidal thoughts and behavior. Should suicidal thoughts and behavior emerge during treatment, consider whether the emergence of these symptoms in any given patient may be related to the illness being treated.

5.2 Neurological Adverse Reactions

BRIVIACT causes somnolence, fatigue, dizziness, and disturbance in coordination. Patients should be monitored for these signs and symptoms and advised not to drive or operate machinery until they have gained sufficient experience on BRIVIACT to gauge whether it adversely affects their ability to drive or operate machinery.

Somnolence and Fatigue

BRIVIACT causes dose-dependent increases in somnolence and fatigue-related adverse reactions (fatigue, asthenia, malaise, hypersomnia, sedation, and lethargy) [see *Adverse Reactions (6.1)*]. In the Phase 3 controlled adjunctive epilepsy trials, these events were reported in 25% of patients randomized to receive BRIVIACT at least 50 mg/day (20% at 50 mg/day, 26% at 100 mg/day, and 27% at 200 mg/day) compared to 14% of patients who received placebo. The risk is greatest early in treatment but can occur at any time.

Dizziness and Disturbance in Gait and Coordination

BRIVIACT causes adverse reactions related to dizziness and disturbance in gait and coordination (dizziness, vertigo, balance disorder, ataxia, nystagmus, gait disturbance, and abnormal coordination) [see *Adverse Reactions (6.1)*]. In the Phase 3 controlled adjunctive epilepsy trials, these events were reported in 16% of patients randomized to receive BRIVIACT at least 50 mg/day compared to 10% of patients who received placebo. The risk is greatest early in treatment but can occur at any time.

5.3 Psychiatric Adverse Reactions

BRIVIACT causes psychiatric adverse reactions. In the Phase 3 controlled adjunctive epilepsy trials, psychiatric adverse reactions were reported in approximately 13% of patients who received BRIVIACT (at least 50 mg/day) compared to 8% of patients who received placebo. Psychiatric events included both non-psychotic symptoms (irritability, anxiety, nervousness, aggression, belligerence, anger, agitation, restlessness, depression, depressed mood, tearfulness, apathy, altered mood, mood swings, affect lability, psychomotor hyperactivity, abnormal behavior, and adjustment disorder) and psychotic symptoms (psychotic disorder along with hallucination, paranoia, acute psychosis, and psychotic behavior). A total of 1.7% of adult patients treated with BRIVIACT discontinued treatment because of psychiatric reactions compared to 1.3% of patients who received placebo.

5.4 Hypersensitivity: Bronchospasm and Angioedema

BRIVIACT can cause hypersensitivity reactions. Bronchospasm and angioedema have been reported in patients taking BRIVIACT. If a patient develops hypersensitivity reactions after treatment with BRIVIACT, the drug should be discontinued. BRIVIACT is contraindicated in patients with a prior hypersensitivity reaction to brivaracetam or any of the inactive ingredients [see *Contraindications (4)*].

5.5 Withdrawal of Antiepileptic Drugs

As with most antiepileptic drugs, BRIVIACT should generally be withdrawn gradually because of the risk of increased seizure frequency and status epilepticus [see *Dosage and Administration (2.4)* and *Clinical Studies (14)*]. But if withdrawal is needed because of a serious adverse event, rapid discontinuation can be considered.

6 ADVERSE REACTIONS

The following serious adverse reactions are described elsewhere in labeling:

- Suicidal Behavior and Ideation [see *Warnings and Precautions (5.1)*]
- Neurological Adverse Reactions [see *Warnings and Precautions (5.2)*]
- Psychiatric Adverse Reactions [see *Warnings and Precautions (5.3)*]
- Hypersensitivity: Bronchospasm and Angioedema [see *Warnings and Precautions (5.4)*]
- Withdrawal of Antiepileptic Drugs [see *Warnings and Precautions (5.5)*]

6.1 Clinical Trials Experience

Because clinical trials are conducted under widely varying conditions, adverse reaction rates observed in the clinical trials of a drug cannot be directly compared to rates in the clinical trials of another drug and may not reflect the rates observed in practice.

In all controlled and uncontrolled trials performed in adult epilepsy patients, BRIVIACT was administered as adjunctive therapy to 2437 patients. Of these patients, 1929 were treated for at least 6 months, 1500 for at least 12 months, 1056 for at least 24 months, and 758 for at least 36 months. A total of 1558 patients (1099 patients treated with BRIVIACT and 459 patients treated with placebo) constituted the safety population in the pooled analysis of Phase 3 placebo-controlled studies in patients with partial-onset seizures (Studies 1, 2, and 3) [see *Clinical Studies (14)*]. The adverse reactions presented in Table 2 are based on this safety population; the median length of treatment in these studies was 12 weeks. Of the patients in those studies, approximately 51% were male, 74% were Caucasian, and the mean age was 38 years.

In the Phase 3 controlled epilepsy studies, adverse events occurred in 68% of patients treated with BRIVIACT and 62% treated with placebo. The most common adverse reactions occurring at a frequency of at least 5% in patients treated with BRIVIACT doses of at least 50 mg/day and greater than placebo were somnolence and sedation (16%), dizziness (12%), fatigue (9%), and nausea and vomiting symptoms (5%).

The discontinuation rates due to adverse events were 5%, 8%, and 7% for patients randomized to receive BRIVIACT at the recommended doses of 50 mg, 100 mg, and 200 mg/day, respectively, compared to 4% in patients randomized to receive placebo.

Table 2 lists adverse reactions for BRIVIACT that occurred at least 2% more frequently for BRIVIACT doses of at least 50 mg/day than placebo.

Table 2: Adverse Reactions in Pooled Placebo-Controlled Adjunctive Therapy Studies in Patients with Partial-Onset Seizures (BRIVIACT 50 mg/day, 100 mg/day, and 200 mg/day)

Adverse Reactions	BRIVIACT (N=803) %	Placebo (N=459) %
Gastrointestinal disorders		
Nausea/vomiting symptoms	5	3
Constipation	2	0
Nervous system disorders		
Somnolence and sedation	16	8
Dizziness	12	7
Fatigue	9	4
Cerebellar coordination and balance disturbances*	3	1
Psychiatric disorders		
Irritability	3	1

* Cerebellar coordination and balance disturbances includes ataxia, balance disorder, coordination abnormal, and nystagmus.

There was no apparent dose-dependent increase in adverse reactions listed in Table 2 with the exception of somnolence and sedation.

Hematologic Abnormalities

BRIVIACT can cause hematologic abnormalities. In the Phase 3 controlled adjunctive epilepsy studies, a total of 1.8% of BRIVIACT-treated patients and 1.1% of placebo-treated patients had at least one clinically significant decreased white blood cell count ($<3.0 \times 10^9/L$), and 0.3% of BRIVIACT-treated patients and 0% of placebo-treated patients had at least one clinically significant decreased neutrophil count ($<1.0 \times 10^9/L$).

Adverse Reactions with BRIVIACT Injection

Adverse reactions with BRIVIACT injection were generally similar to those observed with BRIVIACT tablets. Other adverse events that occurred in at least 3% of patients who received BRIVIACT injection included dysgeusia, euphoric mood, feeling drunk, and infusion site pain.

Comparison by Sex

There were no significant differences by sex in the incidence of adverse reactions.

7 DRUG INTERACTIONS

7.1 Rifampin

Co-administration with rifampin decreases BRIVIACT plasma concentrations likely because of CYP2C19 induction [see *Clinical Pharmacology (12.3)*]. Prescribers should increase the BRIVIACT dose by up to 100% (i.e., double the dosage) in patients while receiving concomitant treatment with rifampin [see *Dosage and Administration (2.6)*].

7.2 Carbamazepine

Co-administration with carbamazepine may increase exposure to carbamazepine-epoxide, the active metabolite of carbamazepine. Though available data did not reveal any safety concerns, if tolerability issues arise when co-administered, carbamazepine dose reduction should be considered [see *Clinical Pharmacology (12.3)*].

7.3 Phenytoin

Because BRIVIACT can increase plasma concentrations of phenytoin, phenytoin levels should be monitored in patients when concomitant BRIVIACT is added to or discontinued from ongoing phenytoin therapy [see *Clinical Pharmacology (12.3)*].

7.4 Levetiracetam

BRIVIACT provided no added therapeutic benefit to levetiracetam when the two drugs were co-administered [see *Clinical Studies (14)*].

8 USE IN SPECIFIC POPULATIONS

8.1 Pregnancy

Pregnancy Exposure Registry

There is a pregnancy exposure registry that monitors pregnancy outcomes in women exposed to antiepileptic drugs (AEDs), such as BRIVIACT, during pregnancy. Encourage patients who are taking BRIVIACT during pregnancy to enroll in the North American Antiepileptic Drug (NAAED) Pregnancy Registry by calling the toll free number 1-888-233-2334 or visiting <http://www.aedpregnancyregistry.org/>.

Risk Summary

There are no adequate data on the developmental risks associated with use of BRIVIACT in pregnant women. In animal studies, brivaracetam produced evidence of developmental toxicity (increased embryofetal mortality and decreased fetal body weights in rabbits; decreased growth, delayed sexual maturation, and long-term neurobehavioral changes in rat offspring) at maternal plasma exposures greater than clinical exposures [see *Data*].

In the U.S. general population, the estimated background risk of major birth defects and miscarriage in clinically recognized pregnancies is 2-4% and 15-20%, respectively. The background risk of major birth defects and miscarriage for the indicated population is unknown.

Data

Animal Data

Oral administration of brivaracetam (0, 150, 300, or 600 mg/kg/day) to pregnant rats during the period of organogenesis did not produce any significant maternal or embryofetal toxicity. The highest dose tested was associated with maternal plasma exposures (AUC) approximately 30 times exposures in humans at the maximum recommended dose (MRD) of 200 mg/day.

Oral administration of brivaracetam (0, 30, 60, 120, or 240 mg/kg/day) to pregnant rabbits during the period of organogenesis resulted in embryofetal mortality and decreased fetal body weights at the highest dose tested, which was also maternally toxic. The highest no-effect dose (120 mg/kg/day) was associated with maternal plasma exposures approximately 4 times human exposures at the MRD.

When brivaracetam (0, 150, 300, or 600 mg/kg/day) was orally administered to rats throughout pregnancy and lactation, decreased growth, delayed sexual maturation (female), and long-term neurobehavioral changes were observed in the offspring at the highest dose. The highest no-effect dose (300 mg/kg/day) was associated with maternal plasma exposures approximately 7 times human exposures at the MRD.

Brivaracetam was shown to readily cross the placenta in pregnant rats after a single oral (5 mg/kg) dose of ¹⁴C-brivaracetam. From 1 hour post dose, radioactivity levels in fetuses, amniotic fluid, and placenta were similar to those measured in maternal blood.

8.2 Lactation

Risk Summary

No data are available regarding the presence of brivaracetam in human milk, the effects on the breastfed infant, or the effects of the drug on milk production. Studies in lactating rats have shown excretion of brivaracetam or metabolites in milk [*see Data*].

The developmental and health benefits of breastfeeding should be considered along with the mother's clinical need for BRIVIACT and any potential adverse effects on the breastfed infant from BRIVIACT or from the underlying maternal condition.

Data

Animal Data

Following a single oral (5 mg/kg) dose of ¹⁴C-brivaracetam to lactating rats, radioactivity was secreted in milk and rapidly reached levels similar to those in plasma.

8.4 Pediatric Use

Safety and effectiveness of BRIVIACT in adolescents 16 years of age have been established [*see Clinical Studies (14)*].

Safety and effectiveness in pediatric patients below the age of 16 years have not been established.

The potential adverse effects of brivaracetam on postnatal growth and development were investigated in juvenile rats and dogs. Oral administration (0, 150, 300, or 600 mg/kg/day) to rats during the neonatal and juvenile periods of development resulted in increased mortality, decreased body weight gain, delayed male sexual maturation, and adverse neurobehavioral effects at the highest dose tested and decreased brain size and weight at all doses. Therefore, a no-effect dose was not established; the lowest dose tested in juvenile rats was associated with plasma exposures (AUC) approximately 2 times those in adult humans at the maximum recommended dose (MRD) of 200 mg/day. In dogs, oral administration (0, 15, 30, or 100 mg/kg/day) throughout the neonatal and juvenile periods of development induced liver changes similar to those observed in adult animals at the highest dose but produced no adverse effects on growth, bone density or strength, neurological testing, or neuropathology evaluation. The overall no-effect dose (30 mg/kg/day) and the no-effect dose for adverse effects on developmental parameters (100 mg/kg/day) were associated with plasma exposures approximately equal to and 4 times, respectively, adult human exposures at the MRD.

8.5 Geriatric Use

There were insufficient numbers of patients 65 years of age and older in the double-blind, placebo-controlled epilepsy trials (n=38) to allow adequate assessment of the effectiveness of BRIVIACT in this population. In general, dose selection for an elderly patient should be judicious, usually starting at the low end of the dosing range, reflecting the greater frequency of decreased hepatic, renal, or cardiac function, and of concomitant disease or other drug therapy [*see Clinical Pharmacology (12.3)*].

8.6 Renal Impairment

Dose adjustments are not required for patients with impaired renal function. There are no data in patients with end-stage renal disease undergoing dialysis, and use of BRIVIACT is not recommended in this patient population [see *Clinical Pharmacology (12.3)*].

8.7 Hepatic Impairment

Because of increases in BRIVIACT exposure, dosage adjustment is recommended for all stages of hepatic impairment [see *Dosage and Administration (2.5)* and *Clinical Pharmacology (12.3)*].

9 DRUG ABUSE AND DEPENDENCE

9.1 Controlled Substance

BRIVIACT contains brivaracetam and is listed as a Schedule V controlled substance.

9.2 Abuse

In a human abuse potential study, single doses of BRIVIACT at therapeutic and supratherapeutic doses were compared to alprazolam (C-IV) (1.5 mg and 3 mg). BRIVIACT at the recommended single dose (50 mg) caused fewer sedative and euphoric effects than alprazolam; however, BRIVIACT at supratherapeutic single doses (200 mg and 1000 mg) was similar to alprazolam on other measures of abuse.

9.3 Dependence

There was no evidence of physical dependence potential or a withdrawal syndrome with BRIVIACT in a pooled review of placebo-controlled adjunctive therapy studies [see *Warnings and Precautions (5.5)*].

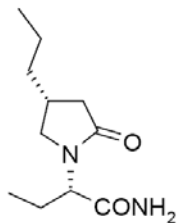
10 OVERDOSAGE

There is limited clinical experience with BRIVIACT overdose in humans. Somnolence and dizziness were reported in a patient taking a single dose of 1400 mg (14 times the highest recommended single dose) of BRIVIACT. The following adverse reactions were reported with BRIVIACT overdose: vertigo, balance disorder, fatigue, nausea, diplopia, anxiety, and bradycardia. In general, the adverse reactions associated with BRIVIACT overdose were consistent with the known adverse reactions.

There is no specific antidote for overdose with BRIVIACT. In the event of overdose, standard medical practice for the management of any overdose should be used. An adequate airway, oxygenation, and ventilation should be ensured; monitoring of cardiac rate and rhythm and vital signs is recommended. A certified poison control center should be contacted for updated information on the management of overdose with BRIVIACT. There are no data on the removal of brivaracetam using hemodialysis, but because less than 10% of brivaracetam is excreted in urine, hemodialysis is not expected to enhance BRIVIACT clearance.

11 DESCRIPTION

The chemical name of BRIVIACT (brivaracetam) is (2S)-2-[(4R)-2-oxo-4-propyltetrahydro-1H-pyrrol-1-yl] butanamide. Its molecular formula is C₁₁H₂₀N₂O₂ and its molecular weight is 212.29. The chemical structure is:



Brivaracetam is a white to off-white crystalline powder. It is very soluble in water, buffer (pH 1.2, 4.5, and 7.4), ethanol, methanol, and glacial acetic acid. It is freely soluble in acetonitrile and acetone and soluble in toluene. It is very slightly soluble in n-hexane.

Tablets

BRIVIACT tablets are for oral administration and contain the following inactive ingredients: croscarmellose sodium, lactose monohydrate, betadex (β -cyclodextrin), anhydrous lactose, magnesium stearate, and film coating agents specified below:

10 mg tablets: polyvinyl alcohol, talc, polyethylene glycol 3350, titanium dioxide

25 mg and 100 mg tablets: polyvinyl alcohol, talc, polyethylene glycol 3350, titanium dioxide, yellow iron oxide, black iron oxide

50 mg tablets: polyvinyl alcohol, talc, polyethylene glycol 3350, titanium dioxide, yellow iron oxide, red iron oxide

75 mg tablets: polyvinyl alcohol, talc, polyethylene glycol 3350, titanium dioxide, yellow iron oxide, red iron oxide, black iron oxide

Oral Solution

BRIVIACT oral solution contains 10 mg of brivaracetam per mL. The inactive ingredients are sodium citrate, anhydrous citric acid, methylparaben, sodium carboxymethylcellulose, sucralose, sorbitol solution, glycerin, raspberry flavor, and purified water.

Injection

BRIVIACT injection is a clear, colorless liquid provided as a sterile, preservative-free solution. BRIVIACT injection contains 10 mg brivaracetam per mL for intravenous administration. One vial contains 50 mg of brivaracetam drug substance. It contains the following inactive ingredients: sodium acetate (trihydrate), glacial acetic acid (for pH adjustment to 5.5), sodium chloride, and water for injection.

12 CLINICAL PHARMACOLOGY

12.1 Mechanism of Action

The precise mechanism by which BRIVIACT exerts its anticonvulsant activity is not known. Brivaracetam displays a high and selective affinity for synaptic vesicle protein 2A (SV2A) in the brain, which may contribute to the anticonvulsant effect.

12.2 Pharmacodynamics

Interactions with Alcohol

In a pharmacokinetic and pharmacodynamic interaction study in healthy subjects, co-administration of BRIVIACT (single dose 200 mg [2 times greater than the highest recommended single dose]) and ethanol (continuous intravenous infusion to achieve a blood alcohol concentration of 60 mg/100 mL during 5 hours) increased the effects of alcohol on psychomotor function, attention, and memory. Co-administration of BRIVIACT and ethanol caused a larger decrease from baseline in saccadic peak velocity, smooth pursuit, adaptive tracking performance, and Visual Analog Scale (VAS) alertness, and a larger increase from baseline in body sway and in saccadic reaction time compared with BRIVIACT alone or ethanol alone. The immediate word recall scores were generally lower for BRIVIACT when co-administered with ethanol.

Cardiac Electrophysiology

At a dose 4 times the maximum recommended dose, BRIVIACT did not prolong the QT interval to a clinically relevant extent.

12.3 Pharmacokinetics

BRIVIACT tablets, oral solution, and injection can be used interchangeably. Brivaracetam exhibits linear and time-independent pharmacokinetics at the approved doses.

The pharmacokinetics of brivaracetam are similar when used as monotherapy or as adjunctive therapy for the treatment of partial-onset seizures.

Absorption

Brivaracetam is highly permeable and is rapidly and almost completely absorbed after oral administration. Pharmacokinetics is dose-proportional from 10 to 600 mg (a range that extends beyond the minimum and maximum single-administration dose levels described in Dosage and Administration [see *Dosage and Administration (2.1)*]). The median T_{max} for tablets taken without food is 1 hour (range 0.25 to 3 hours). Co-administration with a high-fat meal slowed absorption, but the extent of absorption remained unchanged. Specifically, when a 50 mg tablet was administered with a high-fat meal, C_{max} (maximum brivaracetam plasma concentration during a dose interval, an exposure metric) was decreased by 37% and T_{max} was delayed by 3 hours, but AUC (area

under the brivaracetam plasma concentration versus time curve, an exposure metric) was essentially unchanged (decreased by 5%).

Distribution

Brivaracetam is weakly bound to plasma proteins ($\leq 20\%$). The volume of distribution is 0.5 L/kg, a value close to that of the total body water. Brivaracetam is rapidly and evenly distributed in most tissues.

Elimination

Metabolism

Brivaracetam is primarily metabolized by hydrolysis of the amide moiety to form the corresponding carboxylic acid metabolite, and secondarily by hydroxylation on the propyl side chain to form the hydroxy metabolite. The hydrolysis reaction is mediated by hepatic and extra-hepatic amidase. The hydroxylation pathway is mediated primarily by CYP2C19. In human subjects possessing genetic variations in CYP2C19, production of the hydroxy metabolite is decreased 2-fold or 10-fold, while the blood level of brivaracetam itself is increased by 22% or 42%, respectively, in individuals with one or both mutated alleles. CYP2C19 poor metabolizers and patients using inhibitors of CYP2C19 may require dose reduction. An additional hydroxy acid metabolite is created by hydrolysis of the amide moiety on the hydroxy metabolite or hydroxylation of the propyl side chain on the carboxylic acid metabolite (mainly by CYP2C9). None of the 3 metabolites are pharmacologically active.

Excretion

Brivaracetam is eliminated primarily by metabolism and by excretion in the urine. More than 95% of the dose, including metabolites, is excreted in the urine within 72 hours after intake. Fecal excretion accounts for less than 1% of the dose. Less than 10% of the dose is excreted unchanged in the urine. Thirty-four percent of the dose is excreted as the carboxylic acid metabolite in urine. The terminal plasma half-life ($t_{1/2}$) is approximately 9 hours.

Specific Populations

Age

Geriatric Population: In a study in elderly subjects (65 to 79 years old; creatinine clearance 53 to 98 mL/min/1.73 m²) receiving BRIVIACT 200 mg twice daily (2 times the highest recommended dosage), the plasma half-life of brivaracetam was 7.9 hours and 9.3 hours in the 65 to 75 and >75 years groups, respectively. The steady-state plasma clearance of brivaracetam was slightly lower (0.76 mL/min/kg) than in young healthy controls (0.83 mL/min/kg).

Sex

There were no differences observed in the pharmacokinetics of brivaracetam between male and female subjects.

Race/Ethnicity

A population pharmacokinetic analysis comparing Caucasian and non-Caucasian patients showed no significant pharmacokinetic difference.

Renal Impairment

A study in subjects with severe renal impairment (creatinine clearance < 30 mL/min/1.73m² and not requiring dialysis) revealed that the plasma AUC of brivaracetam was moderately increased (21%) relative to healthy controls, while the AUCs of the acid, hydroxy, and hydroxyacid metabolites were increased 3-fold, 4-fold, and 21-fold, respectively. The renal clearance of these inactive metabolites was decreased 10-fold. Brivaracetam has not been studied in patients undergoing hemodialysis [see *Use in Specific Populations* (8.6)].

Hepatic Impairment

A pharmacokinetic study in subjects with hepatic cirrhosis, Child-Pugh grades A, B, and C, showed 50%, 57%, and 59% increases in brivaracetam exposure, respectively, compared to matched healthy controls [see *Dosage and Administration* (2.5) and *Use in Specific Populations* (8.7)].

Drug Interaction Studies

In Vitro Assessment of Drug Interactions

Drug-Metabolizing Enzyme Inhibition

Brivaracetam did not inhibit CYP1A2, 2A6, 2B6, 2C8, 2C9, 2D6, or 3A4. Brivaracetam weakly inhibited CYP2C19 and would not be expected to cause significant inhibition of CYP2C19 in humans. Brivaracetam was an inhibitor of epoxide hydrolase, ($IC_{50} = 8.2 \mu\text{M}$), suggesting that brivaracetam can inhibit the enzyme *in vivo*.

Drug-Metabolizing Enzyme Induction

Brivaracetam at concentrations up to 10 µM caused little or no change of mRNA expression of CYP1A2, 2B6, 2C9, 2C19, 3A4, and epoxide hydrolase. It is unlikely that brivaracetam will induce these enzymes *in vivo*.

Transporters

Brivaracetam was not a substrate of P-gp, MRP1, or MRP2. Brivaracetam did not inhibit or weakly inhibit BCRP, BSEP, MATE1, MATE2/K, MRP2, OAT1, OAT3, OCT1, OCT2, OATP1B1, OATP1B3, or P-gp, suggesting that brivaracetam is unlikely to inhibit these transporters *in vivo*.

In Vivo Assessment of Drug Interactions

Drug Interaction Studies with Antiepileptic Drugs (AEDs)

Potential interactions between BRIVIACT (25 mg twice daily to 100 mg twice daily) and other AEDs were investigated in a pooled analysis of plasma drug concentrations from all Phase 2 and 3 studies and in a population exposure-response analysis of placebo-controlled, Phase 3 studies in adjunctive therapy in the treatment of partial-onset seizures. None of the interactions require changes in the dose of BRIVIACT. Interactions with carbamazepine and phenytoin can be clinically important [see *Drug Interactions (7.2) and (7.3)*]. The interactions are summarized in Table 3.

Table 3: Drug Interactions Between BRIVIACT and Concomitant Antiepileptic Drugs

Concomitant AED	Influence of AED on BRIVIACT	Influence of BRIVIACT on AED
Carbamazepine	26% decrease in plasma concentration	None for carbamazepine Increase of carbamazepine-epoxide metabolite* [see <i>Drug Interactions (7.2)</i>]
Lacosamide	No data	None
Lamotrigine	None	None
Levetiracetam	None	None
Oxcarbazepine	None	None on the active monohydroxy metabolite derivative (MHD)
Phenobarbital	19% decrease in plasma concentration	None
Phenytoin	21% decrease in plasma concentration	Up to 20% increase in plasma concentration [see <i>Drug Interactions (7.3)</i>]**
Pregabalin	No data	None
Topiramate	None	None
Valproic acid	None	None
Zonisamide	No data	None

* Brivaracetam is a reversible inhibitor of epoxide hydrolase resulting in an increased concentration of carbamazepine epoxide, an active metabolite of carbamazepine. The carbamazepine epoxide plasma concentration increased up to 198% at a BRIVIACT dose of 100 mg twice daily.

** At a supratherapeutic dose of 400 mg/day brivaracetam, there was a 20% increase in phenytoin plasma concentration.

Drug Interaction Studies with Other Drugs

Effect of Other Drugs on BRIVIACT

Co-administration with CYP inhibitors or transporter inhibitors is unlikely to significantly affect brivaracetam exposure.

Co-administration with rifampin decreases brivaracetam plasma concentrations by 45%, an effect that is probably the result of CYP2C19 induction [see *Dosage and Administration (2.6) and Drug Interactions (7.1)*].

Oral Contraceptives

Co-administration of BRIVIACT 200 mg twice daily (twice the recommended maximum daily dosage) with an oral contraceptive containing ethinylestradiol (0.03 mg) and levonorgestrel (0.15 mg) reduced estrogen and progestin AUCs by 27% and 23%, respectively, without impact on suppression of ovulation. However, co-administration of BRIVIACT 50 mg twice daily with an oral contraceptive containing ethinylestradiol (0.03 mg) and levonorgestrel (0.15 mg) did not significantly influence the pharmacokinetics of either substance. The interaction is not expected to be of clinical significance.

13 NONCLINICAL TOXICOLOGY

13.1 Carcinogenesis, Mutagenesis, Impairment of Fertility

Carcinogenesis

In a carcinogenicity study in mice, oral administration of brivaracetam (0, 400, 550, or 700 mg/kg/day) for 104 weeks increased the incidence of liver tumors (hepatocellular adenoma and carcinoma) in male mice at the two highest doses tested. At the dose (400 mg/kg) not associated with an increase in liver tumors, plasma exposures (AUC) were approximately equal to those in humans at the maximum recommended dose (MRD) of 200 mg/day. Oral administration (0, 150, 230, 450, or 700 mg/kg/day) to rats for 104 weeks resulted in an increased incidence of thymus tumors (benign thymoma) in female rats at the highest dose tested. At the highest dose not associated with an increase in thymus tumors, plasma exposures were approximately 9 times those in humans at the MRD.

Mutagenesis

Brivaracetam was negative for genotoxicity in *in vitro* (Ames, mouse lymphoma, and CHO chromosomal aberration) and *in vivo* (rat bone marrow micronucleus) assays.

Impairment of Fertility

Oral administration of brivaracetam (0, 100, 200, or 400 mg/kg/day) to male and female rats prior to and throughout mating and early gestation produced no adverse effects on fertility. The highest dose tested was associated with plasma exposures approximately 6 (males) and 13 (females) times those in humans at the MRD.

14 CLINICAL STUDIES

The effectiveness of BRIVIACT in partial-onset seizures with or without secondary generalization was established in 3 fixed-dose, randomized, double-blind, placebo-controlled, multicenter studies (Studies 1, 2, and 3), which included 1550 patients. Patients enrolled had partial-onset seizures that were not adequately controlled with 1 to 2 concomitant antiepileptic drugs (AEDs). In each of these studies, 72% to 86% of patients were taking 2 or more concomitant AEDs with or without vagal nerve stimulation. The median baseline seizure frequency across the 3 studies was 9 seizures per 28 days. Patients had a mean duration of epilepsy of approximately 23 years.

All trials had an 8-week baseline period, during which patients were required to have at least 8 partial-onset seizures. The baseline period was followed by a 12-week treatment period. There was no titration period in these studies. Study 1 compared doses of BRIVIACT 50 mg/day and 100 mg/day with placebo. Study 2 compared a dose of BRIVIACT 50 mg/day with placebo. Study 3 compared doses of BRIVIACT 100 mg/day and 200 mg/day with placebo. BRIVIACT was administered in equally divided twice daily doses. Upon termination of BRIVIACT treatment, patients were down-titrated over a 1-, 2-, and 4-week duration for patients receiving 25, 50, and 100 mg twice daily BRIVIACT, respectively.

The primary efficacy outcome in Study 1 and Study 2 was the percent reduction in 7-day partial-onset seizure frequency over placebo, while the primary outcome for Study 3 was the percent reduction in 28-day partial-onset seizure frequency over placebo. The criteria for statistical significance for all 3 studies was $p < 0.05$. Table 4 presents the primary efficacy outcome of the percent change in seizure frequency over placebo, based upon each study's protocol-defined 7- and 28-day seizure frequency efficacy outcome.

Table 4: Percent Reduction in Partial-Onset Seizure Frequency over Placebo (Studies 1, 2, and 3)

	Percent Reduction Over Placebo (%)
STUDY 1^a	
Placebo (n=100)	-----
50 mg/day (n=99)	9.5
100 mg/day (n=100)	17.0
STUDY 2^a	
Placebo (n=96)	-----
50 mg/day	16.9*

	Percent Reduction Over Placebo (%)
(n=101)	
STUDY 3^b	
Placebo (n=259)	-----
100 mg/day (n=252)	25.2*
200 mg/day (n= 249)	25.7*

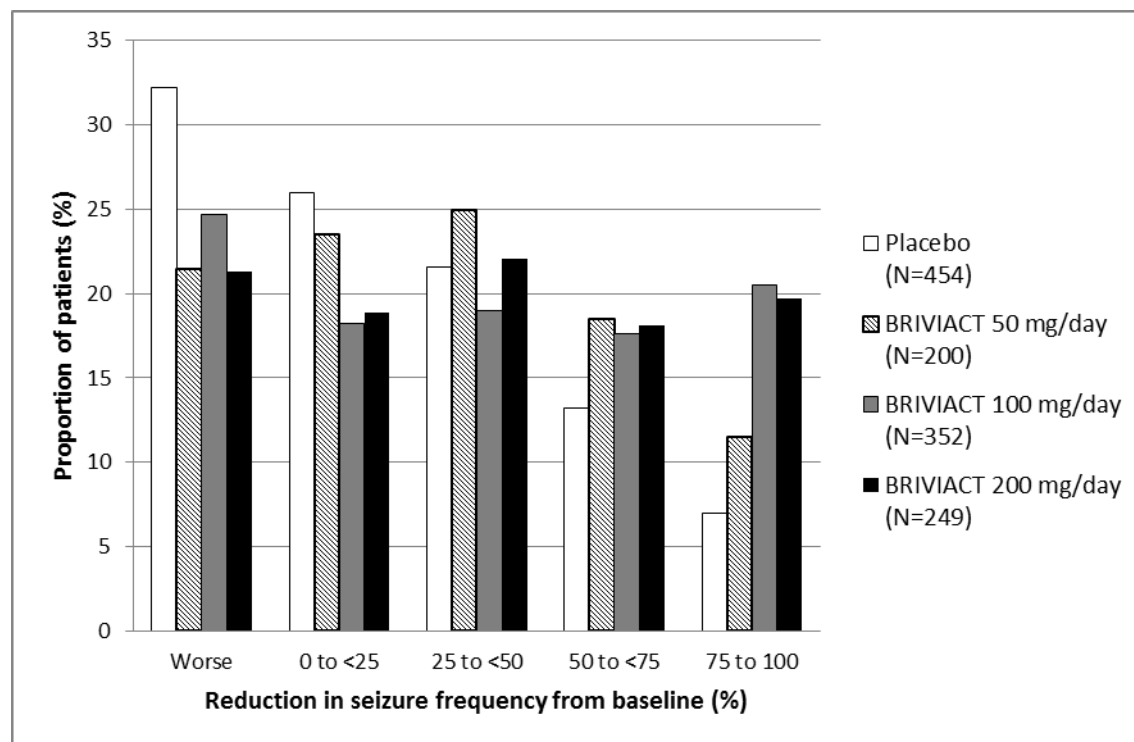
* Statistically significant based on testing procedure with alpha = 0.05

^a Based upon 7-day seizure frequency

^b Based upon 28-day seizure frequency

Figure 1 presents the percentage of patients by category of reduction from baseline in partial-onset seizure frequency per 28 days for all pooled patients in the 3 pivotal studies. Patients in whom the seizure frequency increased are shown at left as “worse.” Patients with an improvement in percent reduction from baseline partial-onset seizure frequency are shown in the 4 right-most categories.

Figure 1: Proportion of Patients by Category of Seizure Response for BRIVIACT and Placebo Across all Three Double-Blind Trials



Treatment with Levetiracetam

In Studies 1 and 2, which evaluated BRIVIACT dosages of 50 mg and 100 mg daily, approximately 20% of the patients were on concomitant levetiracetam. Although the numbers of patients were limited, BRIVIACT provided no added benefit when it was added to levetiracetam.

Although patients on concomitant levetiracetam were excluded from Study 3, which evaluated 100 and 200 mg daily, approximately 54% of patients in this study had prior exposure to levetiracetam.

16 HOW SUPPLIED/STORAGE AND HANDLING

16.1 How Supplied

Hypersensitivity: Bronchospasm and Angioedema

Advise patients that symptoms of hypersensitivity including bronchospasm and angioedema can occur with BRIVIACT. Instruct them to seek immediate medical care should they experience signs and symptoms of hypersensitivity [see *Warnings and Precautions (5.4)*].

Withdrawal of Antiepileptic Drugs

Advise patients not to discontinue use of BRIVIACT without consulting with their healthcare provider. BRIVIACT should normally be gradually withdrawn to reduce the potential for increased seizure frequency and status epilepticus [see *Warnings and Precautions (5.5)*].

Pregnancy

Advise patients to notify their healthcare provider if they become pregnant or intend to become pregnant during BRIVIACT therapy. Encourage patients to enroll in the North American Antiepileptic Drug Pregnancy Registry if they become pregnant. This registry is collecting information about the safety of antiepileptic drugs during pregnancy [see *Use in Specific Populations (8.1)*].

Dosing Instructions

Counsel patients that BRIVIACT may be taken with or without food. Instruct patients that BRIVIACT tablets should be swallowed whole with liquid and not chewed or crushed [see *Dosage and Administration (2.2)*].

Advise patients that the dosage of BRIVIACT oral solution should be measured using a calibrated measuring device and not a household teaspoon. Instruct patients to discard any unused BRIVIACT oral solution after 5 months of first opening the bottle [see *Dosage and Administration (2.2)*].

BRIVIACT Tablets, BRIVIACT Oral Solution, and BRIVIACT Injection manufactured for
UCB, Inc.
Smyrna, GA 30080



BRIVIACT[®] is a registered trademark of the UCB Group of Companies.
©2017, UCB, Inc., Smyrna, GA 30080
All rights reserved.

MEDICATION GUIDE
BRIVIACT® (briv ee akt) CV
(brivaracetam)
tablets, oral solution, and injection for intravenous use

What is the most important information I should know about BRIVIACT?

BRIVIACT is a federally controlled substance (CV) because it can be abused or lead to dependence. Keep BRIVIACT in a safe place to prevent misuse and abuse. Selling or giving away BRIVIACT may harm others and is against the law.

Like other antiepileptic drugs, BRIVIACT may cause suicidal thoughts or actions in a very small number of people, about 1 in 500 people taking it.

Call a healthcare provider right away if you have any of these symptoms, especially if they are new, worse, or worry you:

- thoughts about suicide or dying
- new or worse depression
- feeling agitated or restless
- trouble sleeping (insomnia)
- acting aggressive, feeling angry, or being violent
- an extreme increase in activity and talking (mania)
- attempts to commit suicide
- new or worse anxiety
- panic attacks
- new or worse irritability
- acting on dangerous impulses
- other unusual changes in behavior or mood

Suicidal thoughts or actions can be caused by things other than medicines. If you have suicidal thoughts or actions, your healthcare provider may check for other causes.

How can I watch for early symptoms of suicidal thoughts and actions?

- Pay attention to any changes, especially sudden changes, in mood, behaviors, thoughts, or feelings.
- Keep all follow-up visits with your healthcare provider as scheduled.

Call your healthcare provider between visits as needed, especially if you are worried about symptoms.

Do not stop BRIVIACT without first talking to a healthcare provider.

- Stopping BRIVIACT suddenly can cause serious problems.
- Stopping a seizure medicine suddenly can cause seizures that will not stop (status epilepticus).

What is BRIVIACT?

- BRIVIACT is a prescription medicine that can be used to treat partial-onset seizures in people 16 years of age and older with epilepsy. BRIVIACT may be given in the vein (intravenously) when BRIVIACT is not able to be taken by mouth.

It is not known if BRIVIACT is safe and effective in children younger than 16 years of age.

Who should not take BRIVIACT?

Do not take BRIVIACT if you are allergic to brivaracetam or any of the inactive ingredients in BRIVIACT. See the end of this Medication Guide for a complete list of ingredients in BRIVIACT.

What should I tell my healthcare provider before starting BRIVIACT?

Before taking BRIVIACT, tell your healthcare provider about all of your medical conditions, including if you:

- have or had depression, mood problems, or suicidal thoughts or behavior
- have liver problems
- have abused or been dependent on prescription medicines, street drugs, or alcohol
- have any other medical problems
- are pregnant or plan to become pregnant. It is not known if BRIVIACT will harm your unborn baby. Tell your healthcare provider right away if you become pregnant while taking BRIVIACT. You and your healthcare provider will have to decide if you should take BRIVIACT while you are pregnant. If you become pregnant while taking BRIVIACT, talk to your healthcare provider about registering with the North American Antiepileptic Drug Pregnancy Registry. You can enroll in this registry by calling 1-888-233-2334. The purpose of this registry is to collect information about the safety of BRIVIACT and other antiepileptic medicines during pregnancy.
- are breastfeeding or plan to breastfeed. It is not known if BRIVIACT passes into your breast milk. Talk to your healthcare provider about the best way to feed your baby if you take BRIVIACT.

Tell your healthcare provider about all the medicines you take, including prescription and over-the-counter medicines, vitamins, and herbal supplements. BRIVIACT may affect the way other medicines work, and other medicines may affect how BRIVIACT works. Do not start a new medicine without first talking with your healthcare provider. Know the medicines you take. Keep a list of them to show your healthcare provider and pharmacist each time you get a new medicine.

How should I take BRIVIACT?

- Take BRIVIACT exactly as your healthcare provider tells you.
- Your healthcare provider will tell you how much BRIVIACT to take and when to take it.
- Your healthcare provider may change your dose if needed. Do not change your dose without talking to your healthcare provider.
- Take BRIVIACT with or without food.
- Swallow BRIVIACT tablets whole with a liquid. Do not chew or crush BRIVIACT tablets before swallowing.
- If your healthcare provider has prescribed BRIVIACT oral solution, be sure to ask your pharmacist for a medicine dropper or medicine cup to help you measure the correct amount of BRIVIACT oral solution. Do not use a household teaspoon. Ask your pharmacist for instructions on how to use the measuring device the right way.
- BRIVIACT injection can be given to you by intravenous (IV) infusion into your vein, as prescribed by your healthcare provider.
- If you take too much BRIVIACT, call your Poison Control Center at 1-800-222-1222 or go to the nearest emergency room right away.

What should I avoid while taking BRIVIACT?

Do not drive or operate machinery until you know how BRIVIACT affects you. BRIVIACT may cause drowsiness, tiredness, dizziness, and problems with your balance and coordination.

What are the possible side effects of BRIVIACT?

BRIVIACT may cause serious side effects, including:

- See “**What is the most important information I should know about BRIVIACT?**”
- **Nervous system problems.** Drowsiness, tiredness, and dizziness are common with BRIVIACT, but can be severe. See “What should I avoid while taking BRIVIACT?” BRIVIACT can also cause problems with balance and coordination.
- **Mental (psychiatric) symptoms.** BRIVIACT can cause mood and behavior changes such as aggression, agitation, anger, anxiety, apathy, mood swings, depression, hostility, and irritability. Irritability and anxiety are common with BRIVIACT, and can be severe. People who take BRIVIACT can also get psychotic symptoms such as hallucinations (seeing or hearing things that are really not there), delusions (false or strange thoughts or beliefs), and unusual behavior.

The most common side effects of BRIVIACT include:

- sleepiness
- dizziness
- feeling tired
- nausea and vomiting

These are not all the possible side effects of BRIVIACT. For more information, ask your healthcare provider or pharmacist. Tell your healthcare provider about any side effect that bothers you or that does not go away. Call your doctor for medical advice about side effects. You may report side effects to FDA at 1-800-FDA-1088.

How should I store BRIVIACT?

- Store BRIVIACT at room temperature between 59°F to 86°F (15°C to 30°C).
- Do not freeze BRIVIACT oral solution.
- Safely throw away any opened bottle of BRIVIACT oral solution after 5 months of first opening the bottle, even if there is medicine left in the bottle.
- **Keep BRIVIACT and all medicines out of the reach of children.**

General information about the safe and effective use of BRIVIACT.

Medicines are sometimes prescribed for purposes other than those listed in a Medication Guide. Do not use BRIVIACT for a condition for which it was not prescribed. Do not give BRIVIACT to other people, even if they have the same symptoms that you have. It may harm them.

This Medication Guide summarizes the most important information about BRIVIACT. If you would like more information, talk with your healthcare provider. You can ask your pharmacist or healthcare provider for information about BRIVIACT that is written for health professionals.

What are the ingredients in BRIVIACT?

Active ingredient: brivaracetam

Tablet inactive ingredients: croscarmellose sodium, lactose monohydrate, betadex (β -cyclodextrin), anhydrous lactose, and magnesium stearate. The tablet film coating contains the inactive ingredients listed below:

- **10 mg tablets:** polyvinyl alcohol, talc, polyethylene glycol 3350, titanium dioxide
- **25 mg and 100 mg tablets:** polyvinyl alcohol, talc, polyethylene glycol 3350, titanium dioxide, yellow iron oxide, black iron oxide
- **50 mg tablets:** polyvinyl alcohol, talc, polyethylene glycol 3350, titanium dioxide, yellow iron oxide, red iron oxide
- **75 mg tablets:** polyvinyl alcohol, talc, polyethylene glycol 3350, titanium dioxide, yellow iron oxide, red iron oxide, black iron oxide

Oral solution inactive ingredients: sodium citrate, anhydrous citric acid, methylparaben, sodium carboxymethylcellulose, sucralose, sorbitol solution, glycerin, raspberry flavor, and purified water.

Injection inactive ingredients: sodium acetate (trihydrate), glacial acetic acid, sodium chloride, and water for injection.

Manufactured for UCB, Inc., Smyrna, GA 30080.

BRIVIACT® is a registered trademark of the UCB Group of Companies. ©2017, UCB, Inc., Smyrna, GA 30080. All rights reserved.

For more information, go to www.BRIVIACT.com or call 1-844-599-2273.