

4 mg daily dose

LENVIMA®
(lenvatinib) capsules

203976

LENVIMA®
(lenvatinib) capsules

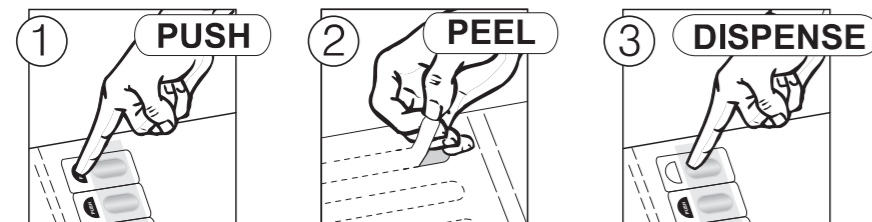
NDC 62856-704-30

Rx only

4 mg daily dose

Dosing Instructions:

Take one daily dose: one 4 mg capsule at the same time once daily, with or without food. Continue to take every day until instructed otherwise by your doctor.



- 1. Push through black half circle.
- 2. Turn card over and peel tab to expose foil.
- 3. Turn card over and push on END of plastic blister to dispense.

Each daily dose consists of 1 capsule: one 4 mg capsule (total dose 4 mg). Each capsule contains 4 mg of lenvatinib equivalent to 4.90 mg of lenvatinib mesylate.

See package insert for dosage information.

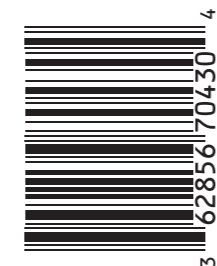
Store at 25°C (77°F); excursions permitted to 15-30°C (59-86°F) [see USP Controlled Room Temperature].

UNVARNISHED LOT/EXP AREA



123247

LENVIMA®
(lenvatinib) capsules



30 Day Supply

Rx only

NDC 62856-704-30

LENVIMA®
(lenvatinib) capsules

4 mg daily dose

Take one 4 mg capsule once daily

30 Day Supply

4 mg daily-dose carton containing 6 cards
(five 4 mg capsules per card)



Distributed by:
Eisai Inc., Woodcliff Lake, NJ 07677
Made in Japan

Take one "Daily Dose"
of 4 mg each day

INSIDE TOP FLAP PRINTING

8 mg daily dose

LENVIMA[®]
(lenvatinib) capsules

203972

LENVIMA[®]
(lenvatinib) capsules

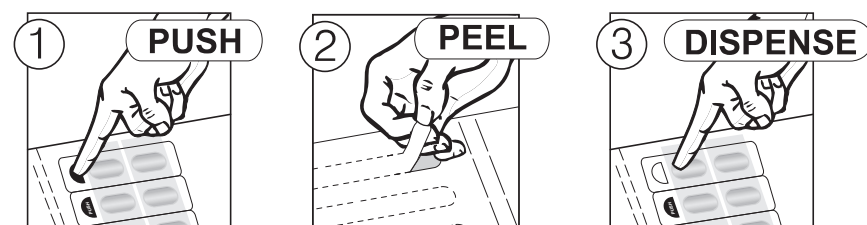
NDC 62856-708-30

Rx only

8 mg daily dose

Dosing Instructions:

Take one daily dose: two 4 mg capsules at the same time once daily, with or without food. Continue to take every day until instructed otherwise by your doctor.



1. Push through black half circle.
2. Turn card over and peel tab to expose foil.
3. Turn card over and push on END of plastic blister to dispense.

Each daily dose consists of 2 capsules: two 4 mg capsules (total dose 8 mg).
Each capsule contains 4 mg of lenvatinib equivalent to 4.90 mg of lenvatinib mesylate.

See package insert for dosage information.

Store at 25°C (77°F); excursions permitted to 15 - 30°C (59 - 86°F) [see USP Controlled Room Temperature].

UNVARNISHED LOT/EXP AREA



123243

8 mg daily dose

30 Day Supply

Rx only

NDC 62856-708-30

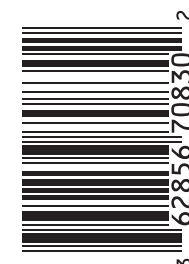
LENVIMA[®]
(lenvatinib) capsules

8 mg daily dose

Take two 4 mg capsules once daily

30 Day Supply

8 mg daily-dose carton containing 6 cards
(ten 4 mg capsules per card)



3 62856 70830 2

LENVIMA[®]
(lenvatinib) capsules



Distributed by:
Eisai Inc., Woodcliff Lake, NJ 07677
Made in Japan

Take one "Daily Dose"
of 8 mg each day

INSIDE TOP FLAP PRINTING

10 mg daily dose

LENVIMA®
(lenvatinib) capsules

203974

LENVIMA®
(lenvatinib) capsules

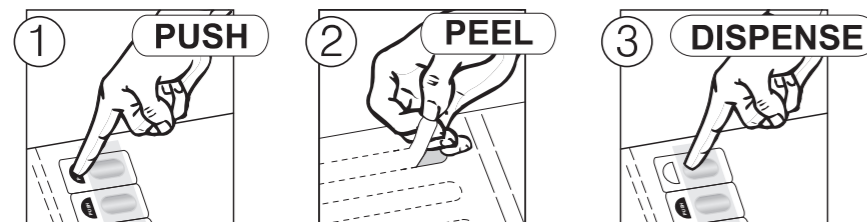
NDC 62856-710-30

Rx only

10 mg daily dose

Dosing Instructions:

Take one daily dose: one 10 mg capsule at the same time once daily, with or without food. Continue to take every day until instructed otherwise by your doctor.



1. Push through black half circle.
2. Turn card over and peel tab to expose foil.
3. Turn card over and push on END of plastic blister to dispense.

Each daily dose consists of 1 capsule: one 10 mg capsule (total dose 10 mg). Each capsule contains 10 mg of lenvatinib equivalent to 12.25 mg of lenvatinib mesylate.

See package insert for dosage information.

Store at 25°C (77°F); excursions permitted to 15-30°C (59-86°F) [see USP Controlled Room Temperature].

UNVARNISHED LOT/EXP AREA



123237

10 mg daily dose

30 Day Supply

Rx only

NDC 62856-710-30

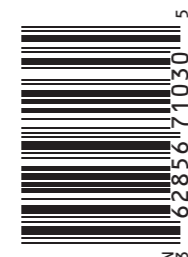
LENVIMA®
(lenvatinib) capsules

10 mg daily dose

Take one 10 mg capsule once daily

30 Day Supply

10 mg daily-dose carton containing 6 cards
(five 10 mg capsules per card)



Distributed by:
Eisai Inc., Woodcliff Lake, NJ 07677
Made in Japan

Take one "Daily Dose"
of 10 mg each day

INSIDE TOP FLAP PRINTING

(b) (4)

12 mg daily dose

LENVIMA[®]
(lenvatinib) capsules

203970

LENVIMA[®]
(lenvatinib) capsules

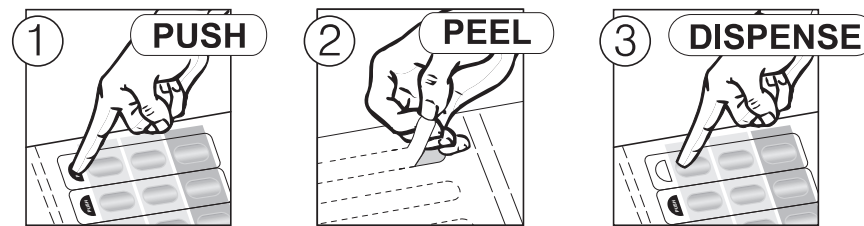
NDC 62856-712-30

Rx only

12 mg daily dose

Dosing Instructions:

Take one daily dose: three 4 mg capsules at the same time once daily, with or without food. Continue to take every day until instructed otherwise by your doctor.



1. Push through black half circle.
2. Turn card over and peel tab to expose foil.
3. Turn card over and push on END of plastic blister to dispense.

Each daily dose consists of 3 capsules: three 4 mg capsules (total dose 12 mg). Each 4 mg capsule contains 4 mg of lenvatinib equivalent to 4.90 mg of lenvatinib mesylate.

See package insert for dosage information.

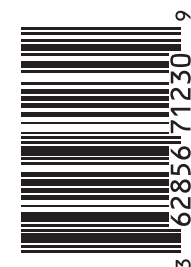
Store at 25°C (77°F); excursions permitted to 15-30°C (59-86°F) [see USP Controlled Room Temperature].

UNVARNISHED LOT/EXP AREA



123249

LENVIMA[®]
(lenvatinib) capsules



3 62856 71230 9

30 Day Supply

Rx only

NDC 62856-712-30

LENVIMA[®]
(lenvatinib) capsules

12 mg daily dose

Take three 4 mg capsules once daily

30 Day Supply

12 mg daily-dose carton containing 6 cards
(fifteen 4 mg capsules per card)



Distributed by:
Eisai Inc., Woodcliff Lake, NJ 07677
Made in Japan

Take one "Daily Dose"
of 12 mg each day

INSIDE TOP FLAP PRINTING

14 mg daily dose

LENVIMA[®]
(lenvatinib) capsules

203966

LENVIMA[®]
(lenvatinib) capsules

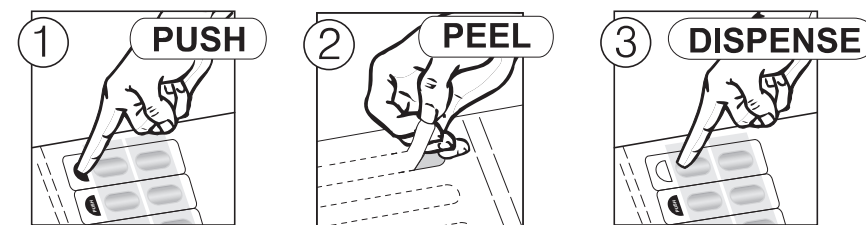
NDC 62856-714-30

Rx only

14 mg daily dose

Dosing Instructions:

Take one daily dose: one 10 mg capsule and one 4 mg capsule at the same time once daily, with or without food. Continue to take every day until instructed otherwise by your doctor.



1. Push through black half circle.
2. Turn card over and peel tab to expose foil.
3. Turn card over and push on END of plastic blister to dispense.

Each daily dose consists of 2 capsules: one 10 mg capsule and one 4 mg capsule (total dose 14 mg). Each 10 mg capsule contains 10 mg of lenvatinib equivalent to 12.25 mg of lenvatinib mesylate. Each 4 mg capsule contains 4 mg of lenvatinib equivalent to 4.90 mg of lenvatinib mesylate.

See package insert for dosage information.

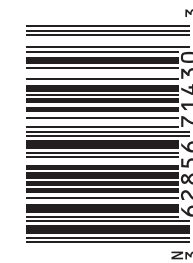
Store at 25°C (77°F); excursions permitted to 15-30°C (59-86°F) [see USP Controlled Room Temperature].

UNVARNISHED LOT/EXP AREA



123239

LENVIMA[®]
(lenvatinib) capsules



30 Day Supply

Rx only

NDC 62856-714-30

LENVIMA[®]
(lenvatinib) capsules

14 mg daily dose

Take one 10 mg capsule and one 4 mg capsule together once daily

30 Day Supply

14 mg daily-dose carton containing 6 cards
(five 10 mg capsules and five 4 mg capsules per card)



Distributed by:
Eisai Inc., Woodcliff Lake, NJ 07677
Made in Japan

Take one "Daily Dose"
of 14 mg each day

INSIDE TOP FLAP PRINTING

18 mg daily dose

LENVIMA®
(lenvatinib) capsules

203968

LENVIMA®
(lenvatinib) capsules

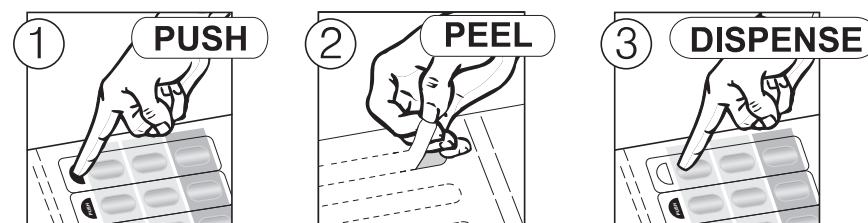
NDC 62856-718-30

Rx only

18 mg daily dose

Dosing Instructions:

Take one daily dose: one 10 mg capsule and two 4 mg capsules at the same time once daily, with or without food. Continue to take every day until instructed otherwise by your doctor.



1. Push through black half circle.
2. Turn card over and peel tab to expose foil.
3. Turn card over and push on END of plastic blister to dispense.

Each daily dose consists of 3 capsules: one 10 mg capsule and two 4 mg capsules (total dose 18 mg). Each 10 mg capsule contains 10 mg of lenvatinib equivalent to 12.25 mg of lenvatinib mesylate. Each 4 mg capsule contains 4 mg of lenvatinib equivalent to 4.90 mg of lenvatinib mesylate.

See package insert for dosage information.

Store at 25°C (77°F); excursions permitted to 15 - 30°C (59 - 86°F) [see USP Controlled Room Temperature].

UNVARNISHED LOT/EXP AREA



123245

18 mg daily dose

30 Day Supply

Rx only

NDC 62856-718-30

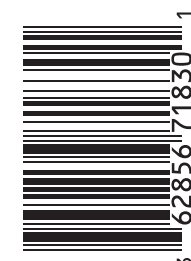
LENVIMA®
(lenvatinib) capsules

18 mg daily dose

Take one 10 mg capsule and two 4 mg capsules together once daily

30 Day Supply

18 mg daily-dose carton containing 6 cards
(five 10 mg capsules and ten 4 mg capsules per card)



3 62856 71830 1

LENVIMA®
(lenvatinib) capsules



Distributed by:
Eisai Inc., Woodcliff Lake, NJ 07677
Made in Japan

Take one "Daily Dose"
of 18 mg each day

INSIDE TOP FLAP PRINTING

20 mg daily dose

LENVIMA®
(lenvatinib) capsules

203964

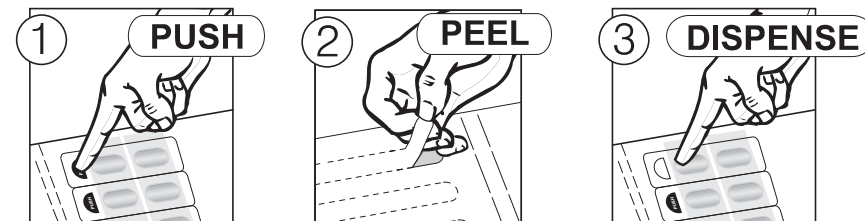
LENVIMA®
(lenvatinib) capsules

NDC 62856-720-30
Rx only

20 mg daily dose

Dosing Instructions:

Take one daily dose: two 10 mg capsules at the same time once daily, with or without food. Continue to take every day until instructed otherwise by your doctor.



- 1. Push through black half circle.
- 2. Turn card over and peel tab to expose foil.
- 3. Turn card over and push on END of plastic blister to dispense.

Each daily dose consists of 2 capsules: two 10 mg capsules (total dose 20 mg). Each capsule contains 10 mg of lenvatinib equivalent to 12.25 mg of lenvatinib mesylate.

See package insert for dosage information.

Store at 25°C (77°F); excursions permitted to 15-30°C (59-86°F) [see USP Controlled Room Temperature].

UNVARNISHED LOT/EXP AREA



123241

20 mg daily dose

30 Day Supply

Rx only

NDC 62856-720-30

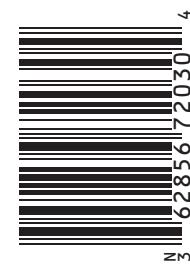
LENVIMA®
(lenvatinib) capsules

20 mg daily dose

Take two 10 mg capsules once daily

30 Day Supply

20 mg daily-dose carton containing 6 cards
(ten 10 mg capsules per card)



Distributed by:
Eisai Inc., Woodcliff Lake, NJ 07677
Made in Japan

Take one "Daily Dose"
of 20 mg each day

INSIDE TOP FLAP PRINTING

(b) (4)

24 mg daily dose

LENVIMA[®]
(lenvatinib) capsules

203962

LENVIMA[®]
(lenvatinib) capsules

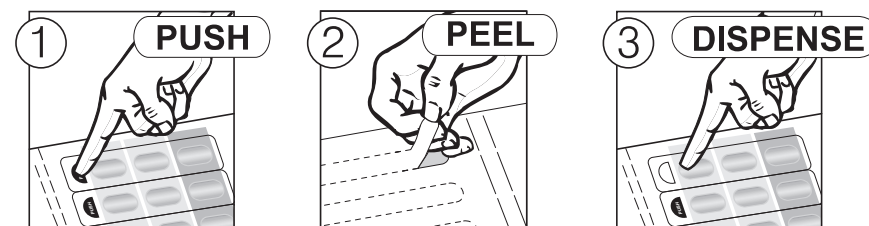
NDC 62856-724-30

Rx only

24 mg daily dose

Dosing Instructions:

Take one daily dose: two 10 mg capsules and one 4 mg capsule at the same time once daily, with or without food. Continue to take every day until instructed otherwise by your doctor.



- 1. Push through black half circle.
- 2. Turn card over and peel tab to expose foil.
- 3. Turn card over and push on END of plastic blister to dispense.

Each daily dose consists of 3 capsules: two 10 mg capsules and one 4 mg capsule (total dose 24 mg). Each 10 mg capsule contains 10 mg of lenvatinib equivalent to 12.25 mg of lenvatinib mesylate. Each 4 mg capsule contains 4 mg of lenvatinib equivalent to 4.90 mg of lenvatinib mesylate.

See package insert for dosage information.

Store at 25°C (77°F); excursions permitted to 15-30°C (59-86°F) [see USP Controlled Room Temperature].

UNVARNISHED LOT/EXP AREA

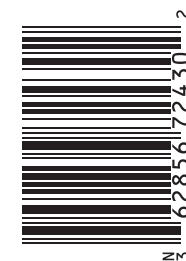


123251

24 mg daily dose

30 Day Supply

LENVIMA[®]
(lenvatinib) capsules



Rx only

NDC 62856-724-30

LENVIMA[®]
(lenvatinib) capsules

24 mg daily dose

Take two 10 mg capsules and one 4 mg capsule together once daily

30 Day Supply

**24 mg daily-dose carton containing 6 cards
(ten 10 mg capsules and five 4 mg capsules per card)**



Distributed by:
Eisai Inc., Woodcliff Lake, NJ 07677
Made in Japan

**Take one “Daily Dose”
of 24 mg each day**

INSIDE TOP FLAP PRINTING



123242

NDC 62856-708-05

LENVIMA® (lenvatinib) capsules

Take both capsules at the same time daily

Take both capsules at the same time daily

Take both capsules at the same time daily

Take both capsules at the same time daily

Take both capsules at the same time daily



Record Start Date

4 mg

4 mg

Daily Dose PUSH

Daily Dose PUSH

Daily Dose PUSH

Daily Dose PUSH

Daily Dose PUSH

Distributed by:
Eisai Inc., Woodcliff Lake, NJ 07677
Made in Japan



Each 5 Day Card contains
ten 4 mg capsules

Take two 4 mg capsules once daily

8 mg daily dose

LENVIMA®
(lenvatinib) capsules

Rx only
NDC 62856-708-05

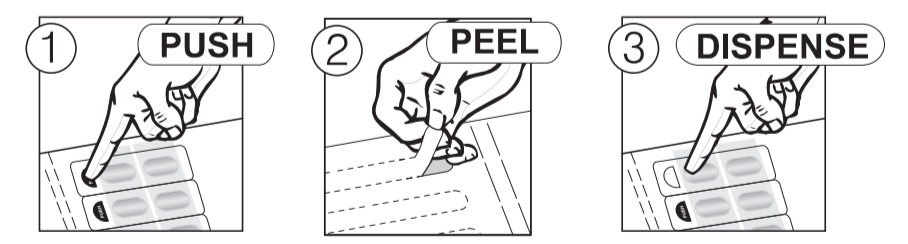
LENVIMA®
(lenvatinib) capsules

NDC 62856-708-05
Rx only

8 mg daily dose

Dosing Instructions:

Take one daily dose: two 4 mg capsules at the same time once daily, with or without food. Continue to take every day until instructed otherwise by your doctor.



1. Push through black half circle.
2. Turn card over and peel tab to expose foil.
3. Turn card over and push on END of plastic blister to dispense.

Each daily dose consists of 2 capsules: two 4 mg capsules (total dose 8 mg).
Each capsule contains 4 mg of lenvatinib equivalent to 4.90 mg of lenvatinib mesylate.

See package insert for dosage information.

Store at 25°C (77°F); excursions permitted to 15 - 30°C (59 - 86°F) [see USP Controlled Room Temperature].

203977



(b) (4)



123246

Distributed by:
Eisai Inc., Woodcliff Lake, NJ 07677
Made in Japan



Each 5 Day Card contains
five 4 mg capsules

Take one 4 mg capsule once daily

4 mg daily dose

LENVIMA[®]
(lenvatinib) capsules

Rx only
NDC 62856-704-05

NDC 62856-704-05

LENVIMA[®] (lenvatinib) capsules

Take one capsule at the same time daily
Take one capsule at the same time daily
Take one capsule at the same time daily
Take one capsule at the same time daily
Take one capsule at the same time daily



Record Start Date

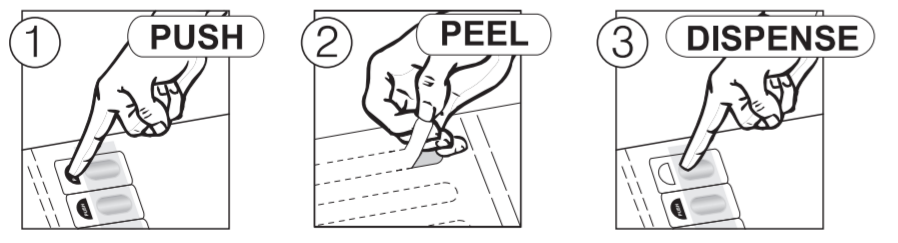
LENVIMA[®]
(lenvatinib) capsules

NDC 62856-704-05
Rx only

4 mg daily dose

Dosing Instructions:

Take one daily dose: one 4 mg capsule at the same time once daily, with or without food. Continue to take every day until instructed otherwise by your doctor.



1. Push through black half circle.
2. Turn card over and peel tab to expose foil.
3. Turn card over and push on END of plastic blister to dispense.

Each daily dose consists of 1 capsule: one 4 mg capsule (total dose 4 mg). Each capsule contains 4 mg of lenvatinib equivalent to 4.90 mg of lenvatinib mesylate.

See package insert for dosage information.

Store at 25°C (77°F); excursions permitted to 15-30°C (59-86°F) [see USP Controlled Room Temperature].

203975

Daily Dose	PUSH	
Daily Dose	PUSH	
Daily Dose	PUSH	
Daily Dose	PUSH	
Daily Dose	PUSH	

(b) (4)



123236

Esai Inc., Woodcliff Lake, NJ 07677
Distributed by:
Esai
Made in Japan

Each 5 Day Card contains
five 10 mg capsules

Take one 10 mg capsule once daily

10 mg daily dose

LENVIMA[®]
(lenvatinib) capsules

Rx only
NDC 62856-710-05

NDC 62856-710-05
LENVIMA[®] (lenvatinib) capsules

Take one capsule at the same time daily

Take one capsule at the same time daily

Take one capsule at the same time daily

Take one capsule at the same time daily

Take one capsule at the same time daily

10 mg

Record Start Date

10 mg

Daily Dose PUSH

Daily Dose PUSH

Daily Dose PUSH

Daily Dose PUSH

Daily Dose PUSH

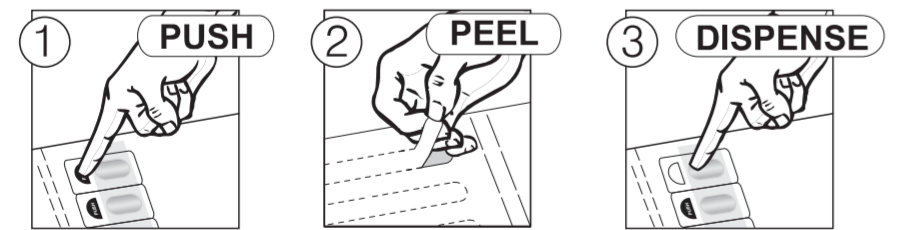
LENVIMA[®]
(lenvatinib) capsules

NDC 62856-710-05
Rx only

10 mg daily dose

Dosing Instructions:

Take one daily dose: one 10 mg capsule at the same time once daily, with or without food. Continue to take every day until instructed otherwise by your doctor.



1. Push through black half circle.
2. Turn card over and peel tab to expose foil.
3. Turn card over and push on END of plastic blister to dispense.

Each daily dose consists of 1 capsule: one 10 mg capsule (total dose 10 mg). Each capsule contains 10 mg of lenvatinib equivalent to 12.25 mg of lenvatinib mesylate.

See package insert for dosage information.

Store at 25°C (77°F); excursions permitted to 15-30°C (59-86°F) [see USP Controlled Room Temperature].

203973

(b) (4)



123248

NDC 62856-712-05

LENVIMA® (lenvatinib) capsules

	4 mg	4 mg	4 mg
Take all three capsules at the same time daily	4 mg	4 mg	4 mg
Take all three capsules at the same time daily			
Take all three capsules at the same time daily			
Take all three capsules at the same time daily			
Take all three capsules at the same time daily			
Daily Dose			
Daily Dose			
Daily Dose			
Daily Dose			
Daily Dose			
Daily Dose			

LENVIMA®
(lenvatinib) capsules

12 mg daily dose

Take three 4 mg capsules once daily

Each 5 Day Card contains fifteen 4 mg capsules

NDC 62856-712-05

Rx only

Esai Inc., Woodcliff Lake, NJ 07677
Made in Japan
Eisai

LENVIMA®
(lenvatinib) capsules

12 mg daily dose

NDC 62856-712-05

Rx only

Dosing Instructions:
Take one daily dose: three 4 mg capsules at the same time once daily, with or without food. Continue to take every day until instructed otherwise by your doctor.

- PUSH**
1. Push through black half circle.
- PEEL**
2. Turn card over and peel tab to expose foil.
- DISPENSE**
3. Turn card over and push on END of plastic blister to dispense.

Each daily dose consists of 3 capsules: three 4 mg capsules (total dose 12 mg). Each 4 mg capsule contains 4 mg of lenvatinib equivalent to 4.90 mg of lenvatinib mesylate.
See package insert for dosage information.
Store at 25°C (77°F); excursions permitted to 15-30°C (59-86°F) [see USP Controlled Room Temperature].

203969



(b) (4)



123244

Esai Inc., Woodcliff Lake, NJ 07677
Distributed by:
Eisai
Made in Japan



Each 5 Day Card contains
five 10 mg capsules
and five 4 mg capsules

Take one 10 mg capsule and one
4 mg capsule together once daily

14 mg daily dose

LENVIMA[®]
(lenvatinib) capsules

Rx only

NDC 62856-714-05

LENVIMA[®] (lenvatinib) capsules

NDC 62856-714-05

Record Start
Date

10 mg



4 mg



Daily Dose



○

○

○

Daily Dose



○

○

○

Daily Dose



○

○

○

Daily Dose



○

○

○

Daily Dose



○

○

○

LENVIMA[®]
(lenvatinib) capsules

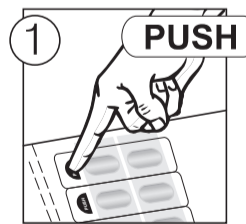
NDC 62856-714-05

Rx only

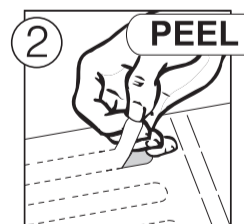
14 mg daily dose

Dosing Instructions:

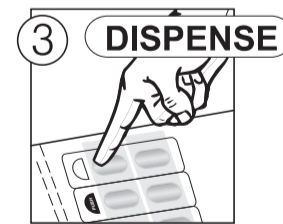
Take one daily dose: one 10 mg capsule and one 4 mg capsule at the same time once daily, with or without food. Continue to take every day until instructed otherwise by your doctor.



1. Push through black half circle.



2. Turn card over and peel tab to expose foil.



3. Turn card over and push on END of plastic blister to dispense.

Each daily dose consists of 2 capsules: one 10 mg capsule and one 4 mg capsule (total dose 14 mg). Each 10 mg capsule contains 10 mg of lenvatinib equivalent to 12.25 mg of lenvatinib mesylate. Each 4 mg capsule contains 4 mg of lenvatinib equivalent to 4.90 mg of lenvatinib mesylate.

See package insert for dosage information.

Store at 25°C (77°F); excursions permitted to 15-30°C (59-86°F) [see USP Controlled Room Temperature].

203971



Esai Inc., Woodcliff Lake, NJ 07677
Distributed by:
Esai
Made in Japan



Each 5 Day Card contains
five 10 mg capsules
and ten 4 mg capsules

Take one 10 mg capsule and two
4 mg capsules together once daily

18 mg daily dose

LENVIMA[®]
(lenvatinib) capsules

Rx only
NDC 62856-718-05

NDC 62856-718-05
LENVIMA[®] (lenvatinib) capsules

Take all three capsules at the same time daily

Take all three capsules at the same time daily

Take all three capsules at the same time daily

Take all three capsules at the same time daily

Take all three capsules at the same time daily

10 mg
4 mg
4 mg

Record Start Date

	10 mg	4 mg	4 mg
Daily Dose			
Daily Dose			
Daily Dose			
Daily Dose			
Daily Dose			

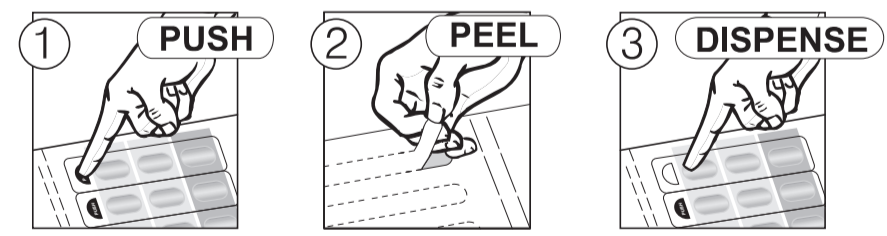
LENVIMA[®]
(lenvatinib) capsules

NDC 62856-718-05
Rx only

18 mg daily dose

Dosing Instructions:

Take one daily dose: one 10 mg capsule and two 4 mg capsules at the same time once daily, with or without food. Continue to take every day until instructed otherwise by your doctor.



1. Push through black half circle.
2. Turn card over and peel tab to expose foil.
3. Turn card over and push on END of plastic blister to dispense.

Each daily dose consists of 3 capsules: one 10 mg capsule and two 4 mg capsules (total dose 18 mg). Each 10 mg capsule contains 10 mg of lenvatinib equivalent to 12.25 mg of lenvatinib mesylate. Each 4 mg capsule contains 4 mg of lenvatinib equivalent to 4.90 mg of lenvatinib mesylate.

See package insert for dosage information.

Store at 25°C (77°F); excursions permitted to 15 - 30°C (59 - 86°F) [see USP Controlled Room Temperature].

203967



(b) (4)



123240

NDC 62856-720-05

LENVIMA® (lenvatinib) capsules

Take both capsules at the same time daily
Take both capsules at the same time daily
Take both capsules at the same time daily
Take both capsules at the same time daily
Take both capsules at the same time daily

10 mg	10 mg
-------	-------

Record Start Date	10 mg	10 mg
-------------------	-------	-------

Daily Dose		
Daily Dose		
Daily Dose		
Daily Dose		
Daily Dose		

Esai Inc., Woodcliff Lake, NJ 07677
Distributed by:
Esai Inc., Woodcliff Lake, NJ 07677
Made in Japan



Each 5 Day Card contains
ten 10 mg capsules

Take two 10 mg capsules once daily

20 mg daily dose

LENVIMA®
(lenvatinib) capsules

Rx only
NDC 62856-720-05

LENVIMA®
(lenvatinib) capsules

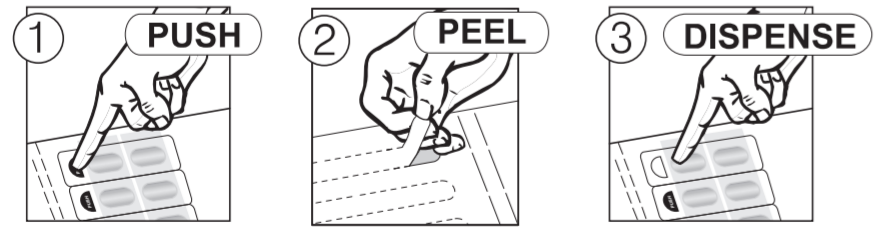
NDC 62856-720-05

Rx only

20 mg daily dose

Dosing Instructions:

Take one daily dose: two 10 mg capsules at the same time once daily, with or without food. Continue to take every day until instructed otherwise by your doctor.



1. Push through black half circle.
2. Turn card over and peel tab to expose foil.
3. Turn card over and push on END of plastic blister to dispense.

Each daily dose consists of 2 capsules: two 10 mg capsules (total dose 20 mg). Each capsule contains 10 mg of lenvatinib equivalent to 12.25 mg of lenvatinib mesylate.

See package insert for dosage information.

Store at 25°C (77°F); excursions permitted to 15-30°C (59-86°F) [see USP Controlled Room Temperature].

203963



(b) (4)



Ramesh
Raghavachari

Digitally signed by Ramesh Raghavachari
Date: 4/23/2020 02:05:02PM
GUID: 502d0913000029f375128b0de8c50020