

## HIGHLIGHTS OF PRESCRIBING INFORMATION

These highlights do not include all the information needed to use EPINEPHRINE INJECTION safely and effectively. See full prescribing information for EPINEPHRINE INJECTION.

### EPINEPHRINE INJECTION, for intravenous use

Initial U.S. Approval: 1939

#### INDICATIONS AND USAGE

Epinephrine is a non-selective alpha- and beta-adrenergic agonist indicated to increase mean arterial blood pressure in adult patients with hypotension associated with septic shock. (1.1)

#### DOSAGE AND ADMINISTRATION

##### Hypotension associated with septic shock:

- Dilute epinephrine in dextrose solution prior to infusion. (2.2)
- Infuse epinephrine into a large vein. (2.2)
- Intravenous infusion rate of 0.05 mcg/kg/min to 2 mcg/kg/min, titrated to achieve desired mean arterial pressure. (2.2)
- Wean gradually. (2.2)

#### DOSAGE FORMS AND STRENGTHS

- Injection: 1 mg/10 mL (0.1 mg/mL) in ABBOJECT® Syringe. (3)
- Injection: 1 mg/10 mL (0.1 mg/mL) in ABBOJECT® Syringe with Male Luer Lock Adapter. (3)

#### CONTRAINDICATIONS

None. (4)

#### WARNINGS AND PRECAUTIONS

- Monitor patient for acute severe hypertension. (5.1)
- Potential for pulmonary edema, which may be fatal. (5.2)
- May induce potentially serious cardiac arrhythmias and myocardial ischemia, particularly in patients with underlying heart disease. (5.3)
- Avoid extravasation into tissues, which can cause local necrosis. (5.4)
- Potential for oliguria or renal impairment. (5.5)

- Presence of sulfite in this product should not deter use for hypotension associated with septic shock (5.6)

#### ADVERSE REACTIONS

Most common adverse reactions to systemically administered epinephrine are headache; anxiety; apprehensiveness; restlessness; tremor; weakness; dizziness; diaphoresis; nausea/vomiting; and/or respiratory difficulties. Arrhythmias, including fatal ventricular fibrillation, rapid rises in blood pressure producing cerebral hemorrhage, and angina have occurred. (6)

To report SUSPECTED ADVERSE REACTIONS, contact Hospira, Inc. at 1-800-441-4100, or FDA at 1-800-FDA-1088 or [www.fda.gov/medwatch](http://www.fda.gov/medwatch).

#### DRUG INTERACTIONS

- Drugs that counter the pressor effects of epinephrine include alpha blockers, vasodilators such as nitrates, diuretics, antihypertensives, and ergot alkaloids. (7.1)
- Drugs that potentiate the effects of epinephrine include sympathomimetics, beta blockers, tricyclic antidepressants, MAO inhibitors, COMT inhibitors, clonidine, doxapram, oxytocin, levothyroxine sodium, and certain antihistamines. (7.2)
- Drugs that increase the arrhythmogenic potential of epinephrine include beta blockers, cyclopropane and halogenated hydrocarbon anesthetics, quinidine, antihistamines, exogenous thyroid hormones, diuretics, and cardiac glycosides. Observe for development of cardiac arrhythmias. (7.3)
- Potassium-depleting drugs, including corticosteroids, diuretics, and theophylline, potentiate the hypokalemic effects of epinephrine. (7.4)

#### USE IN SPECIFIC POPULATIONS

- Pregnancy: Epinephrine may cause fetal harm. (8.1)
- Elderly patients and pregnant women may be at greater risk of developing adverse reactions when epinephrine is administered parenterally. (8.1, 8.5)

Revised: 5/2025

## FULL PRESCRIBING INFORMATION: CONTENTS\*

### 1 INDICATIONS AND USAGE

1.1 Hypotension associated with Septic Shock

### 2 DOSAGE AND ADMINISTRATION

2.1 General Considerations

2.2 Hypotension associated with Septic Shock

### 3 DOSAGE FORMS AND STRENGTHS

### 4 CONTRAINDICATIONS

### 5 WARNINGS AND PRECAUTIONS

5.1 Hypertension

5.2 Pulmonary Edema

5.3 Cardiac Arrhythmias and Ischemia

5.4 Extravasation and Tissue Necrosis with Intravenous Infusion

5.5 Renal Impairment

5.6 Allergic Reactions associated with Sulfite

### 6 ADVERSE REACTIONS

### 7 DRUG INTERACTIONS

7.1 Drugs Antagonizing Pressor Effects of Epinephrine

7.2 Drugs Potentiating Pressor Effects of Epinephrine

7.3 Drugs Potentiating Arrhythmogenic Effects of Epinephrine

7.4 Drugs Potentiating Hypokalemic Effects of Epinephrine

### 8 USE IN SPECIFIC POPULATIONS

8.1 Pregnancy

8.2 Lactation

8.4 Pediatric Use

8.5 Geriatric Use

### 10 OVERDOSAGE

### 11 DESCRIPTION

### 12 CLINICAL PHARMACOLOGY

12.1 Mechanism of Action

12.2 Pharmacodynamics

12.3 Pharmacokinetics

### 13 NONCLINICAL TOXICOLOGY

13.1 Carcinogenesis, Mutagenesis, Impairment of Fertility

13.2 Animal Toxicology and/or Pharmacology

### 14 CLINICAL STUDIES

14.1 Hypotension associated with Septic Shock

### 16 HOW SUPPLIED/STORAGE AND HANDLING

\*Sections or subsections omitted from the full prescribing information are not listed.

## FULL PRESCRIBING INFORMATION

### 1 INDICATIONS AND USAGE

#### 1.1 Hypotension associated with Septic Shock

Epinephrine Injection USP, 1 mg/10 mL (0.1 mg/mL) is indicated to increase mean arterial blood pressure in adult patients with hypotension associated with septic shock.

### 2 DOSAGE AND ADMINISTRATION

#### 2.1 General Considerations

Inspect visually for particulate matter and discoloration prior to administration, whenever solution and container permit. Do not use if the solution is colored or cloudy, or if it contains particulate matter. Discard all unused drug.

#### 2.2 Hypotension associated with Septic Shock

Dilute 10 mL (1 mg) of epinephrine from the syringe in 1,000 mL of 5 percent dextrose solution or 5 percent dextrose and sodium chloride solution to produce a 1 mcg per mL dilution. The diluted solutions can be stored for up to 4 hours at room temperature or 24 hours under refrigerated conditions.

Administration in saline solution alone is not recommended. If indicated, administer whole blood or plasma separately.

Whenever possible, give infusions of epinephrine into a large vein. Avoid using a catheter tie-in technique, because the obstruction to blood flow around the tubing may cause stasis and increased local concentration of the drug. Avoid the veins of the leg in elderly patients or in those suffering from occlusive vascular diseases.

To provide hemodynamic support in septic shock associated hypotension in adult patients, the suggested dosing infusion rate of intravenously administered epinephrine is 0.05 mcg/kg/min to 2 mcg/kg/min, and is titrated to achieve a desired mean arterial pressure (MAP). The dosage may be adjusted periodically, such as every 10 - 15 minutes, in increments of 0.05 mcg/kg/min to 0.2 mcg/kg/min, to achieve the desired blood pressure goal.

After hemodynamic stabilization, wean incrementally over time, such as by decreasing doses of epinephrine every 30 minutes over a 12- to 24-hour period.

### 3 DOSAGE FORMS AND STRENGTHS

Injection solution: 10 mL clear glass vial containing 1 mg/10 mL (0.1 mg/mL) epinephrine in a sterile, nonpyrogenic, clear and colorless solution. Each vial is co-packaged with an injector, which together make a single-dose ABBOJECT<sup>®</sup> Syringe.

Injection solution: 10 mL clear glass vial containing 1 mg/10 mL (0.1 mg/mL) epinephrine in a sterile, nonpyrogenic, clear and colorless solution. Each vial is co-packaged with an injector, which together make a single-dose ABBOJECT<sup>®</sup> Syringe with Male Luer Lock Adapter.

### 4 CONTRAINDICATIONS

None.

## 5 WARNINGS AND PRECAUTIONS

### 5.1 Hypertension

Because individual response to epinephrine may vary significantly, monitor blood pressure frequently and titrate to avoid excessive increases in blood pressure.

Patients receiving monoamine oxidase inhibitors (MAOI) or antidepressants of the triptyline or imipramine types may experience severe, prolonged hypertension when given epinephrine.

### 5.2 Pulmonary Edema

Epinephrine increases cardiac output and causes peripheral vasoconstriction, which may result in pulmonary edema.

### 5.3 Cardiac Arrhythmias and Ischemia

Epinephrine may induce cardiac arrhythmias and myocardial ischemia in patients, especially patients with coronary artery disease, or cardiomyopathy [*see Adverse Reactions and Drug Interactions (7.3)*].

### 5.4 Extravasation and Tissue Necrosis with Intravenous Infusion

Avoid extravasation of epinephrine into the tissues, to prevent local necrosis. When Epinephrine Injection is administered intravenously, check the infusion site frequently for free flow. Blanching along the course of the infused vein, sometimes without obvious extravasation, may be attributed to vasa vasorum constriction with increased permeability of the vein wall, permitting some leakage. This also may progress on rare occasions to a superficial slough. Hence, if blanching occurs, consider changing the infusion site at intervals to allow the effects of local vasoconstriction to subside.

There is potential for gangrene in a lower extremity when infusions of catecholamine are given in an ankle vein.

**Antidote for Extravasation Ischemia:** To prevent sloughing and necrosis in areas in which extravasation has taken place, infiltrate the area with 10 mL to 15 mL of saline solution containing from 5 mg to 10 mg of phentolamine, an adrenergic blocking agent. Use a syringe with a fine hypodermic needle, with the solution being infiltrated liberally throughout the area, which is easily identified by its cold, hard, and pallid appearance. Sympathetic blockade with phentolamine causes immediate and conspicuous local hyperemic changes if the area is infiltrated within 12 hours.

### 5.5 Renal Impairment

Epinephrine constricts renal blood vessels, which may result in oliguria or renal impairment.

### 5.6 Allergic Reactions associated with Sulfite

Epinephrine Injection contains sodium metabisulfite which may cause mild to severe allergic reactions including anaphylaxis or asthmatic episodes, particularly in patients with a history of allergies. The presence of sodium metabisulfite in this product should not preclude its use for the treatment of hypotension associated with septic shock even if the patient is sulfite-sensitive, as the alternatives to using epinephrine in a life-threatening situation may not be satisfactory. In susceptible patients, consider using a formulation of epinephrine or another vasoconstrictor that does not contain sodium metabisulfite.

## 6 ADVERSE REACTIONS

The following adverse reactions are discussed elsewhere in labeling:

- Hypertension [*see Warnings and Precautions (5.1)*]
- Pulmonary Edema [*see Warnings and Precautions (5.2)*]
- Cardiac Arrhythmias and Ischemia [*see Warnings and Precautions (5.3)*]
- Extravasation and Tissue Necrosis with Intravenous Infusion [*see Warnings and Precautions (5.4)*]
- Renal Impairment [*see Warnings and Precautions (5.5)*]
- Allergic Reactions associated with Sulfite [*see Warnings and Precautions (5.6)*]

The following adverse reactions have been associated with use of epinephrine. Because these reactions are reported voluntarily from a population of uncertain size, it is not always possible to estimate their frequency reliably or to establish a causal relationship to drug exposure.

Cardiovascular disorders: tachycardia, supraventricular tachycardia, ventricular arrhythmias (including fatal ventricular fibrillation), myocardial ischemia, myocardial infarction, stress cardiomyopathy, limb ischemia, pulmonary edema, hypertension

Gastrointestinal disorders: nausea, vomiting

General disorders and administrative site conditions: extravasation

Metabolic: insulin resistance, hypokalemia, lactic acidosis

Nervous system disorders: headache, paresthesia, tremor, stroke, central nervous system bleeding, weakness, dizziness, disorientation, impaired memory, panic, psychomotor agitation, somnolence

Psychiatric disorders: excitability, anxiety, apprehensiveness, nervousness, restlessness

Renal disorders: renal insufficiency

Respiratory: rales

Skin and subcutaneous tissue disorders: diaphoresis, pallor, piloerection, skin blanching, skin necrosis with extravasation.

## 7 DRUG INTERACTIONS

### 7.1 Drugs Antagonizing Pressor Effects of Epinephrine

- $\alpha$ -blockers, such as phentolamine
- Vasodilators, such as nitrates
- Diuretics
- Antihypertensives
- Ergot alkaloids
- Phenothiazine antipsychotics

### 7.2 Drugs Potentiating Pressor Effects of Epinephrine

- Sympathomimetics
- $\beta$ -blockers, such as propranolol
- Tricyclic anti-depressants
- Monoamine oxidase (MAO) inhibitors
- Catechol-O-methyl transferase (COMT) inhibitors, such as entacapone
- Clonidine
- Doxapram
- Oxytocin

### 7.3 Drugs Potentiating Arrhythmogenic Effects of Epinephrine

Patients who are concomitantly receiving any of the following drugs should be observed carefully for the development of cardiac arrhythmias [*see Warnings and Precautions (5.5) and Adverse Reactions (6)*].

- $\beta$ -blockers, such as propranolol
- Cyclopropane or halogenated hydrocarbon anesthetics, such as halothane
- Antihistamines
- Thyroid hormones
- Diuretics
- Cardiac glycosides, such as digitalis glycosides
- Quinidine

### 7.4 Drugs Potentiating Hypokalemic Effects of Epinephrine

- Potassium depleting diuretics
- Corticosteroids
- Theophylline

## 8 USE IN SPECIFIC POPULATIONS

### 8.1 Pregnancy

#### Risk Summary

Limited published data on epinephrine use in pregnant women are not sufficient to determine a drug-associated risk for major birth defects or miscarriage. However, there are risks to the mother and fetus associated with epinephrine use during labor or delivery, and risks due to untreated hypotension associated with septic shock (*see Clinical Considerations*). In animal reproduction studies, epinephrine demonstrated adverse developmental effects when administered to pregnant rabbits (gastroschisis), mice (teratogenic effects, embryonic lethality, and delayed skeletal ossification), and hamsters (embryonic lethality and delayed skeletal ossification) during organogenesis at doses approximately 15 times, 3 times and 2 times, respectively, the maximum recommended daily intramuscular or subcutaneous dose (*see Data*).

All pregnancies have a background risk of birth defects, loss, or other adverse outcomes. The estimated background risk of major birth defects and miscarriage for the indicated population is unknown. In the U.S. general population, the estimated background risk of major birth defects and miscarriage in clinically recognized pregnancies is 2 to 4% and 15 to 20%, respectively.

#### Clinical Considerations

##### *Disease-associated maternal and/or embryo/fetal risk*

Hypotension associated with septic shock is a medical emergency in pregnancy which can be fatal if left untreated. Delaying treatment in pregnant women with hypotension associated with septic shock may increase the risk of maternal and fetal morbidity and mortality. Do not withhold life-sustaining therapy for a pregnant woman.

##### *Labor or Delivery*

Epinephrine usually inhibits spontaneous or oxytocin induced contractions of the pregnant human uterus and may delay the second stage of labor. Avoid epinephrine during the second stage of labor. In dosage sufficient to

reduce uterine contractions, the drug may cause a prolonged period of uterine atony with hemorrhage. Avoid epinephrine in obstetrics when maternal blood pressure exceeds 130/80 mmHg.

Although epinephrine improves maternal hypotension associated with anaphylaxis, it may result in uterine vasoconstriction, decreased uterine blood flow, and fetal anoxia.

## Data

### *Animal Data*

In a study in pregnant rabbits administered 1.2 mg/kg/day epinephrine (approximately 15 times the maximum recommended intramuscular or subcutaneous dose on a mg/m<sup>2</sup> basis) subcutaneously during organogenesis (on days 3 to 5, 6 to 7 or 7 to 9 of gestation), epinephrine caused teratogenic effects (including gastroschisis). Animals treated on days 6 to 7 had decreased number of implantations.

In a teratology study, pregnant mice were subcutaneously administered epinephrine (0.1 to 10 mg/kg/day) on Gestation Days 6 to 15. Teratogenic effects, embryonic lethality, and delays in skeletal ossification were observed at approximately 3 times the maximum recommended intramuscular or subcutaneous dose (on a mg/m<sup>2</sup> basis at maternal subcutaneous dose of 1 mg/kg/day for 10 days). These effects were not seen in mice at approximately 2 times the maximum recommended daily intramuscular or subcutaneous dose (on a mg/m<sup>2</sup> basis at a subcutaneous maternal dose of 0.5 mg/kg/day for 10 days).

Subcutaneous administration of epinephrine to pregnant hamsters at a dose of 0.5 mg/kg/day (approximately 2 times the maximum recommended intramuscular or subcutaneous dose on a mg/m<sup>2</sup> basis) on Gestation Days 7 to 10 resulted in delayed skeletal ossification and a reduction in litter size.

## **8.2 Lactation**

### Risk Summary

There is no information regarding the presence of epinephrine in human milk, or the effects of epinephrine on the breastfed infant or on milk production. However, due to its poor oral bioavailability and short half-life, epinephrine exposure is expected to be very low in the breastfed infant. The lack of clinical data during lactation precludes a clear determination of the risk of epinephrine to a breastfed infant.

## **8.4 Pediatric Use**

Safety and effectiveness in pediatric patients have not been established.

## **8.5 Geriatric Use**

Clinical studies of epinephrine for the treatment of hypotension associated with septic shock did not include sufficient numbers of subjects aged 65 and over to determine whether they respond differently from younger subjects. Other reported clinical experience has not identified differences in responses between the elderly and younger patients. In general, dose selection for an elderly patient should be cautious, usually starting at the low end of the dosing range, reflecting the greater frequency of decreased hepatic, renal, or cardiac function, and of concomitant disease or other drug therapy.

## **10 OVERDOSAGE**

Overdosage of epinephrine may produce extremely elevated arterial pressure, which may result in cerebrovascular hemorrhage, particularly in elderly patients. Overdosage may also result in pulmonary edema because of peripheral vascular constriction together with cardiac stimulation. Epinephrine overdosage may also cause transient bradycardia followed by tachycardia and these may be accompanied by potentially fatal cardiac

arrhythmias. Premature ventricular contractions may appear within one minute after injection and may be followed by multifocal ventricular tachycardia (prefibrillation rhythm). Subsidence of the ventricular effects may be followed by atrial tachycardia and occasionally by atrioventricular block. Myocardial ischemia and infarction, cardiomyopathy, extreme pallor and coldness of the skin, metabolic acidosis due to elevated blood lactic acid levels, and renal insufficiency and failure have also been reported.

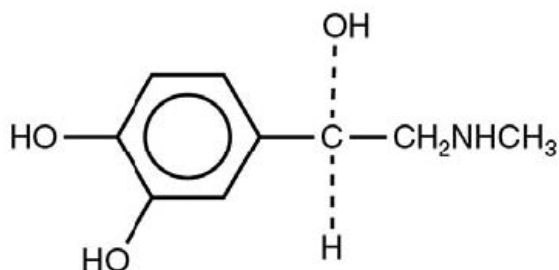
Epinephrine is rapidly inactivated in the body and treatment following overdose is primarily supportive. Treatment of pulmonary edema consists of a rapidly acting alpha-adrenergic blocking drug (such as phentolamine mesylate) and respiratory support. Treatment of arrhythmias consists of administration of a beta-adrenergic blocking drug (such as propranolol). If necessary, pressor effects may be counteracted by rapidly acting vasodilators (such as nitrites) or alpha-adrenergic blocking drugs. If prolonged hypotension follows such measures, it may be necessary to administer another pressor drug.

## 11 DESCRIPTION

Epinephrine Injection USP, 1 mg/10 mL (0.1 mg/mL) is supplied as a sterile aqueous solution with a pH range of 2.3-3.5, that is clear, colorless, and nonpyrogenic. Each milliliter contains 0.1 mg epinephrine, 8.16 mg sodium chloride, 0.46 mg sodium metabisulfite, and 2.13 mg citric acid, anhydrous and 0.41 mg sodium citrate, dihydrate added as buffers. Additional citric acid and/or sodium citrate may be added for pH adjustment. The solution contains no preservatives.

This sterile solution is to be administered after dilution by the intravenous route.

Epinephrine is a sympathomimetic catecholamine (adrenergic agent) designated chemically as 4-[1-hydroxy-2 (methylamino) ethyl]-1,2 benzenediol, a white, crystalline powder. It has the following structural formula:



The molecular weight of epinephrine is 183.2.

Epinephrine solution deteriorates rapidly on exposure to air or light, turning pink from oxidation to adrenochrome and brown from the formation of melanin.

## 12 CLINICAL PHARMACOLOGY

### 12.1 Mechanism of Action

Epinephrine acts on both alpha ( $\alpha$ )- and beta ( $\beta$ )-adrenergic receptors. The mechanism of the rise in blood pressure is 3-fold: a direct myocardial stimulation that increases the strength of ventricular contraction (positive inotropic action), an increased heart rate (positive chronotropic action), and peripheral vasoconstriction.

### 12.2 Pharmacodynamics

Following intravenous administration of epinephrine, increases in systolic blood pressure and heart rate are observed. Decreases in systemic vascular resistance and diastolic blood pressure are observed at low doses of

epinephrine because of  $\beta_2$ -mediated vasodilation, but are overtaken by  $\alpha_1$ -mediated peripheral vasoconstriction at higher doses leading to increase in diastolic blood pressure. The onset of blood pressure increase following an intravenous dose of epinephrine is < 5 minutes and the time to offset blood pressure response occurs within 20 min. Most vascular beds are constricted including renal, splanchnic, mucosal and skin.

Epinephrine increases glycogenolysis, reduces glucose up take by tissues, and inhibits insulin release in the pancreas, resulting in hyperglycemia and increased blood lactic acid.

### 12.3 Pharmacokinetics

When administered parenterally epinephrine has a rapid onset and short duration of action.

Following intravenous injection, epinephrine is rapidly cleared from the plasma with an effective half-life of < 5 min. A pharmacokinetic steady state following continuous intravenous infusion is achieved within 10-15 min. In patients with septic shock, epinephrine displays dose-proportional pharmacokinetics in the infusion dose range of 0.03 to 1.7 mcg/kg/min.

Epinephrine is extensively metabolized with only a small amount excreted unchanged. Epinephrine is rapidly degraded to vanillylmandelic acid, an inactive metabolite, by monoamine oxidase and catechol-O-methyltransferase that are abundantly expressed in the liver, kidneys and other extraneuronal tissues. The tissues with the highest contribution to removal of circulating exogenous epinephrine are the liver (32%), kidneys (25%), skeletal muscle (20%), and mesenteric organs (12%).

#### Specific Populations

##### *Elderly*

In a pharmacokinetic study of 45-minute epinephrine infusions given to healthy men aged 20 to 25 years and healthy men aged 60 to 65 years, the mean plasma metabolic clearance rate of epinephrine at steady state was greater among the older men (144.8 versus 78 mL/kg/min for a 14.3 ng/kg/min infusion).

##### *Body Weight*

Body weight has been found to influence epinephrine pharmacokinetics. Higher body weight was associated with a higher plasma epinephrine clearance and a lower concentration plateau.

## 13 NONCLINICAL TOXICOLOGY

### 13.1 Carcinogenesis, Mutagenesis, Impairment of Fertility

Long-term studies to evaluate the carcinogenic potential of epinephrine have not been conducted.

Epinephrine and other catecholamines have been shown to have mutagenic potential *in vitro*. Epinephrine was positive in the *Salmonella* bacterial reverse mutation assay, positive in the mouse lymphoma assay, and negative in the *in vivo* micronucleus assay. Epinephrine is a mutagen based on the *E. coli* WP2 Mutoxitest bacterial reverse mutation assay.

The potential for epinephrine to impair reproductive performance has not been evaluated, but epinephrine has been shown to decrease implantation in female rabbits dosed subcutaneously with 1.2 mg/kg/day (15-fold the highest human intramuscular or subcutaneous daily dose) during gestation days 3 to 9.

## 13.2 Animal Toxicology and/or Pharmacology

Epinephrine was associated with metabolic effects, decreased mesentery, coronary and renal conductance in a sheep model of septic shock. Data from hemolysis study have shown that epinephrine at 1:1000 dilution is non-hemolytic. Epinephrine infusion significantly increased the MAP (69 vs. 86 mmHg) and cardiac output (6.4 vs. 7.1 L/min) and decreased renal blood flow (330 vs. 247 mL/min).

## 14 CLINICAL STUDIES

### 14.1 Hypotension associated with Septic Shock

Fourteen clinical studies from the literature documented that epinephrine increases the mean arterial pressure (MAP) in patients with hypotension associated with septic shock.

## 16 HOW SUPPLIED/STORAGE AND HANDLING

Epinephrine Injection 1 mg/10 mL (0.1 mg/mL) is a clear and colorless solution available in glass vials. Each vial is co-packaged with an injector, which together make a single-dose ABBOJECT® Syringe. It is supplied in the following presentations.

Unit of Sale and Product Description	Strength (Concentration)	NDC
Bundle of 10 10 mL Single-Dose ABBOJECT® Glass Syringes	1 mg/10 mL (0.1 mg/mL)	0409-4933-01
Bundle of 10 10 mL Single-Dose ABBOJECT® Syringe with Male Luer Lock Adapter.	1 mg/10 mL (0.1 mg/mL)	0409-4933-10

Epinephrine is light sensitive. Protect from light until ready to use. Do not refrigerate. Protect from freezing. Store at room temperature, between 20°C to 25°C (68°F to 77°F). (See USP Controlled Room Temperature.) Protect from alkalis and oxidizing agents.

Inspect visually for particulate matter and discoloration prior to administration. Do not use the solution if it is colored or cloudy, or if it contains particulate matter.

Distributed by Hospira, Inc., Lake Forest, IL 60045 USA



ABBOJECT® is a trademark of Abbott Laboratories.

LAB-0928-3.1