

HIGHLIGHTS OF PRESCRIBING INFORMATION

These highlights do not include all the information needed to use BAFIERTAM safely and effectively. See full prescribing information for BAFIERTAM.

BAFIERTAM™ (monomethyl fumarate) delayed-release capsules, for oral use
Initial U.S. Approval: 2013

INDICATIONS AND USAGE

BAFIERTAM is indicated for the treatment of relapsing forms of multiple sclerosis (MS), to include clinically isolated syndrome, relapsing-remitting disease, and active secondary progressive disease, in adults (1)

DOSAGE AND ADMINISTRATION

- Blood tests are required prior to initiation of BAFIERTAM (2.1)
- Starting dose: 95 mg twice a day, orally, for 7 days (2.2)
- Maintenance dose after 7 days: 190 mg (administered as two 95 mg capsules) twice a day, orally (2.2)
- Swallow BAFIERTAM capsules whole and intact. Do not crush, chew, or mix contents with food. (2.3)
- Take BAFIERTAM with or without food (2.3)

DOSAGE FORMS AND STRENGTHS

Delayed-release capsules: 95 mg (3)

CONTRAINDICATIONS

- Known hypersensitivity to monomethyl fumarate, dimethyl fumarate, diroximel fumarate, or any of the excipients of BAFIERTAM
- Co-administration with dimethyl fumarate or diroximel fumarate (4)

WARNINGS AND PRECAUTIONS

- Anaphylaxis and Angioedema: Discontinue and do not restart BAFIERTAM if these occur (5.1)
- Progressive Multifocal Leukoencephalopathy (PML): Withhold BAFIERTAM at the first sign or symptom suggestive of PML (5.2)
- Herpes zoster and other serious opportunistic infections: Consider withholding BAFIERTAM in cases of serious infection until the infection has resolved. (5.3)
- Lymphopenia: Obtain a CBC including lymphocyte count before initiating BAFIERTAM, after 6 months, and every 6 to 12 months thereafter. Consider interruption of BAFIERTAM if lymphocyte counts $<0.5 \times 10^9/L$ persist for more than six months. (5.4)
- Liver Injury: Obtain serum aminotransferase, alkaline phosphatase, and total bilirubin levels before initiating BAFIERTAM and during treatment, as clinically indicated. Discontinue BAFIERTAM if clinically significant liver injury induced by BAFIERTAM is suspected. (5.5)

ADVERSE REACTIONS

Most common adverse reactions (incidence for dimethyl fumarate [the prodrug of BAFIERTAM] $\geq 10\%$ and $\geq 2\%$ more than placebo) were flushing, abdominal pain, diarrhea, and nausea. (6.1)

To report SUSPECTED ADVERSE REACTIONS, contact Banner Life Sciences at toll-free phone 1-866-MMF 95MG or FDA at 1-800-FDA-1088 or www.fda.gov/medwatch.

USE IN SPECIFIC POPULATIONS

- Pregnancy: Based on animal data, may cause fetal harm. (8.1)

See 17 for PATIENT COUNSELING INFORMATION and FDA-approved patient labeling.

Revised: x/201x

FULL PRESCRIBING INFORMATION: CONTENTS*

1 INDICATIONS AND USAGE

2 DOSAGE AND ADMINISTRATION

- 2.1 Blood Tests Prior to Initiation of BAFIERTAM
- 2.2 Dosing Information
- 2.3 Administration Instructions
- 2.4 Blood Tests to Assess Safety After Initiation of BAFIERTAM

3 DOSAGE FORMS AND STRENGTHS

4 CONTRAINDICATIONS

5 WARNINGS AND PRECAUTIONS

- 5.1 Anaphylaxis and Angioedema
- 5.2 Progressive Multifocal Leukoencephalopathy
- 5.3 Herpes Zoster and Other Serious Opportunistic Infections
- 5.4 Lymphopenia
- 5.5 Liver Injury
- 5.6 Flushing

6 ADVERSE REACTIONS

- 6.1 Clinical Trials Experience
- 6.2 Postmarketing Experience

7 DRUG INTERACTIONS

- 7.1 Concomitant Dimethyl Fumarate or Diroximel Fumarate

8 USE IN SPECIFIC POPULATIONS

- 8.1 Pregnancy
- 8.2 Lactation
- 8.4 Pediatric Use
- 8.5 Geriatric Use

11 DESCRIPTION

12 CLINICAL PHARMACOLOGY

- 12.1 Mechanism of Action
- 12.2 Pharmacodynamics
- 12.3 Pharmacokinetics

13 NONCLINICAL TOXICOLOGY

- 13.1 Carcinogenesis, Mutagenesis, Impairment of Fertility
- 13.2 Animal Toxicology and/or Pharmacology

14 CLINICAL STUDIES

16 HOW SUPPLIED/STORAGE AND HANDLING

- 16.1 How Supplied
- 16.2 Storage and Handling

17 PATIENT COUNSELING INFORMATION

* Sections or subsections omitted from the full prescribing information are not listed.

FULL PRESCRIBING INFORMATION

1 INDICATIONS AND USAGE

BAFIERTAM is indicated for the treatment of relapsing forms of multiple sclerosis (MS), to include clinically isolated syndrome, relapsing-remitting disease, and active secondary progressive disease, in adults.

2 DOSAGE AND ADMINISTRATION

2.1 Blood Tests Prior to Initiation of BAFIERTAM

Obtain the following prior to treatment with BAFIERTAM:

- A complete blood cell count (CBC), including lymphocyte count [see *Warnings and Precautions* (5.3)].
- Serum aminotransferase, alkaline phosphatase, and total bilirubin levels [see *Warnings and Precautions* (5.4)].

2.2 Dosing Information

The starting dosage for BAFIERTAM is 95 mg twice a day orally for 7 days. After 7 days, the dosage should be increased to the maintenance dosage of 190 mg (administered as two 95 mg capsules) twice a day orally. Temporary dosage reductions to 95 mg twice a day may be considered for individuals who do not tolerate the maintenance dosage. Within 4 weeks, the recommended dosage of 190 mg twice a day should be resumed. Discontinuation of BAFIERTAM should be considered for patients unable to tolerate return to the maintenance dosage. Administration of non-enteric coated aspirin (up to a dose of 325 mg) 30 minutes prior to BAFIERTAM dosing may reduce the incidence or severity of flushing [see *Clinical Pharmacology* (12.3)].

2.3 Administration Instructions

Swallow BAFIERTAM capsules whole and intact. Do not crush, chew, or mix the contents with food. BAFIERTAM can be taken with or without food.

2.4 Blood Tests to Assess Safety After Initiation of BAFIERTAM

Obtain a complete blood cell count (CBC), including lymphocyte count, 6 months after initiation of BAFIERTAM and then every 6 to 12 months thereafter, as clinically indicated [see *Warnings and Precautions* (5.3)].

Obtain serum aminotransferase, alkaline phosphatase, and total bilirubin levels during treatment with BAFIERTAM, as clinically indicated [see *Warnings and Precautions* (5.4)].

3 DOSAGE FORMS AND STRENGTHS

BAFIERTAM is available as soft gelatin delayed-release capsules containing 95 mg of monomethyl fumarate. The 95 mg capsule is white, opaque, oval, coated, and printed with "95" in black ink on the body.

4 CONTRAINDICATIONS

BAFIERTAM is contraindicated in patients

- With known hypersensitivity to monomethyl fumarate, dimethyl fumarate, diroximel fumarate, or to any of the excipients of BAFIERTAM. Reactions may include anaphylaxis or angioedema [see *Warnings and Precautions (5.1)*].
- Taking dimethyl fumarate or diroximel fumarate [see *Drug Interactions (7.1)*].

5 WARNINGS AND PRECAUTIONS

5.1 Anaphylaxis and Angioedema

BAFIERTAM can cause anaphylaxis and angioedema after the first dose or at any time during treatment. Signs and symptoms in patients taking dimethyl fumarate (the prodrug of BAFIERTAM) have included difficulty breathing, urticaria, and swelling of the throat and tongue. Patients should be instructed to discontinue BAFIERTAM and seek immediate medical care should they experience signs and symptoms of anaphylaxis or angioedema.

5.2 Progressive Multifocal Leukoencephalopathy

Progressive multifocal leukoencephalopathy (PML) has occurred in patients with MS treated with dimethyl fumarate (the prodrug of BAFIERTAM). PML is an opportunistic viral infection of the brain caused by the JC virus (JCV) that typically only occurs in patients who are immunocompromised, and that usually leads to death or severe disability. A fatal case of PML occurred in a patient who received dimethyl fumarate for 4 years while enrolled in a clinical trial. During the clinical trial, the patient experienced prolonged lymphopenia (lymphocyte counts predominantly $<0.5 \times 10^9/L$ for 3.5 years) while taking dimethyl fumarate [see *Warnings and Precautions (5.4)*]. The patient had no other identified systemic medical conditions resulting in compromised immune system function and had not previously been treated with natalizumab, which has a known association with PML. The patient was also not taking any immunosuppressive or immunomodulatory medications concomitantly.

PML has also occurred in patients taking dimethyl fumarate in the postmarketing setting in the presence of lymphopenia ($<0.9 \times 10^9/L$). While the role of lymphopenia in these cases is uncertain, the PML cases have occurred predominantly in patients with lymphocyte counts $<0.8 \times 10^9/L$ persisting for more than 6 months.

At the first sign or symptom suggestive of PML, withhold BAFIERTAM and perform an appropriate diagnostic evaluation. Typical symptoms associated with PML are diverse, progress over days to weeks, and include progressive weakness on one side of the body or clumsiness of limbs, disturbance of vision, and changes in thinking, memory, and orientation leading to confusion and personality changes.

Magnetic resonance imaging (MRI) findings may be apparent before clinical signs or symptoms. Cases of PML, diagnosed based on MRI findings and the detection of JCV DNA in the cerebrospinal fluid in the absence of clinical signs or symptoms specific to PML, have been reported in patients treated with other MS medications associated with PML. Many of these patients subsequently became symptomatic with PML. Therefore, monitoring with MRI for signs that may be consistent with PML may be useful, and any suspicious findings should lead to further investigation to allow for an early diagnosis of PML, if present. Lower PML-related mortality and morbidity have been reported following discontinuation of another MS medication associated with PML in patients with PML who were initially asymptomatic compared to patients with PML who had characteristic clinical signs and symptoms at diagnosis. It is not known whether these differences are due to early detection and discontinuation of MS treatment or due to differences in disease in these patients.

5.3 Herpes Zoster and Other Serious Opportunistic Infections

Serious cases of herpes zoster have occurred with dimethyl fumarate (the prodrug of BAFIERTAM), including disseminated herpes zoster, herpes zoster ophthalmicus, herpes zoster meningoencephalitis, and herpes zoster meningomyelitis. These events may occur at any time during treatment. Monitor patients on BAFIERTAM for signs and symptoms of herpes zoster. If herpes zoster occurs, appropriate treatment for herpes zoster should be administered.

Other serious opportunistic infections have occurred with dimethyl fumarate, including cases of serious viral (herpes simplex virus, West Nile virus, cytomegalovirus), fungal (*Candida* and *Aspergillus*), and bacterial (*Nocardia*, *Listeria monocytogenes*, *Mycobacterium tuberculosis*) infections. These infections have been reported in patients with reduced absolute lymphocyte counts (ALC) as well as in patients with normal ALC. These infections have affected the brain, meninges, spinal cord, gastrointestinal tract, lungs, skin, eye, and ear. Patients with symptoms and signs consistent with any of these infections should undergo prompt diagnostic evaluation and receive appropriate treatment.

Consider withholding BAFIERTAM treatment in patients with herpes zoster or other serious infections until the infection has resolved [see *Adverse Reactions* (6.2)].

5.4 Lymphopenia

BAFIERTAM may decrease lymphocyte counts. In the MS placebo-controlled trials with dimethyl fumarate (the prodrug of BAFIERTAM), mean lymphocyte counts decreased by approximately 30% during the first year of treatment with dimethyl fumarate and then remained stable. Four weeks after stopping dimethyl fumarate, mean lymphocyte counts increased, but did not return to baseline. Six percent (6%) of dimethyl fumarate patients and <1% of placebo patients experienced lymphocyte counts $<0.5 \times 10^9/L$ (lower limit of normal $0.91 \times 10^9/L$). The incidence of infections (60% vs 58%) and serious infections (2% vs 2%) was similar in patients treated with dimethyl fumarate or placebo, respectively. There was no increased incidence of serious infections observed in patients with lymphocyte counts $<0.8 \times 10^9/L$ or $\leq 0.5 \times 10^9/L$ in controlled trials, although one patient in an extension study developed PML in the setting of prolonged lymphopenia (lymphocyte counts predominantly $<0.5 \times 10^9/L$ for 3.5 years) [see *Warnings and Precautions* (5.2)].

In controlled and uncontrolled clinical trials with dimethyl fumarate, 2% of patients experienced lymphocyte counts $<0.5 \times 10^9/L$ for at least six months, and in this group, the majority of lymphocyte counts remained $<0.5 \times 10^9/L$ with continued therapy. Neither BAFIERTAM nor dimethyl fumarate have been studied in patients with preexisting low lymphocyte counts.

Obtain a CBC, including lymphocyte count, before initiating treatment with BAFIERTAM, 6 months after starting treatment, and then every 6 to 12 months thereafter, and as clinically indicated. Consider interruption of BAFIERTAM in patients with lymphocyte counts less than $0.5 \times 10^9/L$ persisting for more than six months. Given the potential for delayed recovery of lymphocyte counts, continue to obtain lymphocyte counts until their recovery if BAFIERTAM is discontinued or interrupted because of lymphopenia. Consider withholding treatment from patients with serious infections until resolution. Decisions about whether or not to restart BAFIERTAM should be individualized based on clinical circumstances.

5.5 Liver Injury

Clinically significant cases of liver injury have been reported in patients treated with dimethyl fumarate (the prodrug of BAFIERTAM) in the postmarketing setting. The onset has ranged from a few days to several months after initiation of treatment with dimethyl fumarate. Signs and symptoms of liver injury, including elevation of serum aminotransferases to greater than 5-fold the upper limit of normal and elevation of total bilirubin to greater than 2-fold the upper limit of normal have been observed. These abnormalities resolved upon treatment discontinuation. Some cases required hospitalization. None of the reported cases resulted in liver failure, liver transplant, or death. However, the combination of new serum aminotransferase elevations with increased levels of bilirubin caused by drug-induced hepatocellular injury is an important predictor of serious liver injury that may lead to acute liver failure, liver transplant, or death in some patients.

Elevations of hepatic transaminases (most no greater than 3 times the upper limit of normal) were observed during controlled trials with dimethyl fumarate [see *Adverse Reactions (6.1)*].

Obtain serum aminotransferase, alkaline phosphatase (ALP), and total bilirubin levels prior to treatment with BAFIERTAM and during treatment, as clinically indicated. Discontinue BAFIERTAM if clinically significant liver injury induced by BAFIERTAM is suspected.

5.6 Flushing

BAFIERTAM may cause flushing (e.g., warmth, redness, itching, and/or burning sensation). In clinical trials of dimethyl fumarate (the prodrug of BAFIERTAM), 40% of dimethyl fumarate-treated patients experienced flushing. Flushing symptoms generally began soon after initiating dimethyl fumarate and usually improved or resolved over time. In the majority of patients who experienced flushing, it was mild or moderate in severity. Three percent (3%) of patients discontinued dimethyl fumarate for flushing, and <1% had serious flushing symptoms that were not life-threatening but led to hospitalization. Studies with dimethyl fumarate show that administration of non-enteric coated aspirin (up to a dose of 325 mg) 30 minutes prior to dosing may reduce the incidence or severity of flushing [see *Clinical Pharmacology (12.3)*]. In the BAFIERTAM studies, the presence of food did not impact the incidence of flushing.

6 ADVERSE REACTIONS

The following clinically significant adverse reactions are described elsewhere in the labeling:

- Anaphylaxis and Angioedema [see *Warnings and Precautions (5.1)*].
- Progressive Multifocal Leukoencephalopathy [see *Warnings and Precautions (5.2)*].
- *Herpes Zoster and Other Serious Opportunistic Infections* [see *Warnings and Precautions (5.3)*].
- Lymphopenia [see *Warnings and Precautions (5.4)*].
- Liver Injury [see *Warnings and Precautions (5.5)*].
- Flushing [see *Warnings and Precautions (5.6)*].

6.1 Clinical Trials Experience

Because clinical trials are conducted under widely varying conditions, adverse reaction rates observed in the clinical trials of a drug cannot be directly compared to rates in the clinical trials of another drug and may not reflect the rates observed in practice.

The data described in the following label sections were obtained using dimethyl fumarate delayed-release capsules (the prodrug of BAFIERTAM).

Adverse Reactions in Placebo-Controlled Trials with Dimethyl Fumarate

In the two well-controlled studies demonstrating effectiveness, 1529 patients received dimethyl fumarate with an overall exposure of 2244 person-years [see *Clinical Studies (14)*].

The adverse reactions presented in Table 1 below are based on safety information from 769 patients treated with dimethyl fumarate 240 mg twice a day and 771 placebo-treated patients. The most common adverse reactions (incidence $\geq 10\%$ and $\geq 2\%$ more than placebo) for dimethyl fumarate were flushing, abdominal pain, diarrhea, and nausea.

Table 1: Adverse Reactions in Study 1 and 2 Reported for Dimethyl Fumarate at $\geq 2\%$ Higher Incidence than Placebo

Adverse Reaction	Dimethyl Fumarate 240 mg Twice Daily N=769	Placebo N=771
	%	%
Flushing	40	6
Abdominal pain	18	10
Diarrhea	14	11
Nausea	12	9
Vomiting	9	5
Pruritus	8	4
Rash	8	3
Albumin urine present	6	4
Erythema	5	1
Dyspepsia	5	3
Aspartate aminotransferase increased	4	2
Lymphopenia	2	<1

Gastrointestinal

Dimethyl fumarate caused GI events (e.g., nausea, vomiting, diarrhea, abdominal pain, and dyspepsia). In clinical trials, the incidence of GI events was higher early in the course of treatment (primarily during the first month) and usually decreased over time in patients treated with dimethyl fumarate compared with placebo. Four percent (4%) of patients treated with dimethyl fumarate and less than 1% of patients on placebo discontinued due to gastrointestinal events. The incidence of serious GI events was 1% in patients treated with dimethyl fumarate.

Hepatic Transaminases

An increased incidence of elevations of hepatic transaminases in patients treated with dimethyl fumarate in clinical trials was seen primarily during the first six months of treatment, and most patients with elevations had levels < 3 times the upper limit of normal (ULN). Elevations of alanine aminotransferase and aspartate aminotransferase to ≥ 3 times the ULN occurred in a small number of patients treated with both dimethyl fumarate and in patients on placebo, and were balanced between the groups. There were no elevations in transaminases ≥ 3 times the ULN with concomitant elevations in total bilirubin > 2 times the ULN. Discontinuations due to elevated hepatic transaminases were < 1%, and were similar in patients treated with dimethyl fumarate or placebo.

Eosinophilia

A transient increase in mean eosinophil counts was seen during the first 2 months of therapy with dimethyl fumarate.

Adverse Reactions in Studies with BAFIERTAM (Monomethyl Fumarate)

In clinical studies, a total of 178 healthy subjects have received single doses of BAFIERTAM. The adverse reaction profile of BAFIERTAM was consistent with the experience in the placebo-controlled clinical trials with dimethyl fumarate. Taking BAFIERTAM without food may reduce the incidence of GI events.

6.2 Postmarketing Experience

The following adverse reactions have been identified during post approval use of dimethyl fumarate (the prodrug of BAFIERTAM). Because these reactions are reported voluntarily from a population of uncertain size, it is not always possible to reliably estimate their frequency or establish a causal relationship to drug exposure.

Liver function abnormalities (elevations in transaminases ≥ 3 times ULN with concomitant elevations in total bilirubin > 2 times ULN) have been reported following administration in postmarketing experience [see *Warnings and Precautions (5.5)*].

Herpes zoster infection and other serious opportunistic infections have been reported following administration in postmarketing experience [see *Warnings and Precautions (5.3)*].

7 DRUG INTERACTIONS

7.1 Concomitant Dimethyl Fumarate or Diroximel Fumarate

Both dimethyl fumarate and diroximel fumarate are metabolized to monomethyl fumarate. Therefore, BAFIERTAM is contraindicated in patients currently taking dimethyl fumarate or diroximel fumarate. BAFIERTAM may be initiated the day following discontinuation of either of these drugs.

8 USE IN SPECIFIC POPULATIONS

8.1 Pregnancy

Risk Summary

There are no adequate data on the developmental risk associated with the use of BAFIERTAM or dimethyl fumarate (the prodrug of BAFIERTAM) in pregnant women. In animals, adverse effects on offspring survival, growth, sexual maturation, and neurobehavioral function were observed when dimethyl fumarate (DMF) was administered during pregnancy and lactation at clinically relevant doses [see *Data*].

In the U.S. general population, the estimated background risk of major birth defects and miscarriage in clinically recognized pregnancies is 2-4% and 15-20%, respectively. The background risk of major birth defects and miscarriage for the indicated population is unknown.

Data

Animal data

In rats administered DMF orally (0, 25, 100, and 250 mg/kg/day) throughout organogenesis, embryofetal toxicity (reduced fetal body weight and delayed ossification) were observed at the highest dose tested. This dose also produced evidence of maternal toxicity (reduced body weight). Plasma exposure (AUC) for monomethyl fumarate (MMF), the major circulating metabolite, at the no-effect

dose is approximately three times that in humans at the recommended human dose (RHD) of MMF (380 mg/day). In rabbits administered DMF orally (0, 25, 75, and 150 mg/kg/day) throughout organogenesis, embryoletality and decreased maternal body weight were observed at the highest dose tested. The plasma AUC for MMF at the no-effect dose is approximately 5 times that in humans at the RHD of MMF.

Oral administration of DMF (0, 25, 100, and 250 mg/kg/day) to rats throughout organogenesis and lactation resulted in increased lethality, persistent reductions in body weight, delayed sexual maturation (male and female pups), and reduced testicular weight at the highest dose tested. Neurobehavioral impairment was observed at all doses. A no-effect dose for developmental toxicity was not identified. The lowest dose tested was associated with plasma AUC for MMF lower than that in humans at the RHD of MMF.

8.2 Lactation

Risk Summary

There are no data on the presence of DMF or MMF in human milk. The effects on the breastfed infant and on milk production are unknown.

The developmental and health benefits of breastfeeding should be considered along with the mother's clinical need for BAFIERTAM and any potential adverse effects on the breastfed infant from the drug or from the underlying maternal condition.

8.4 Pediatric Use

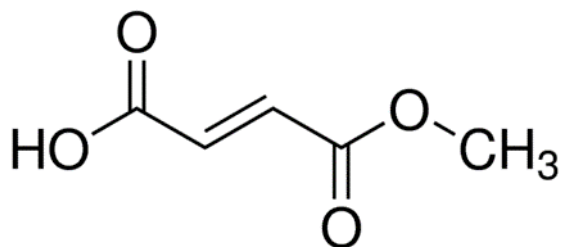
Safety and effectiveness in pediatric patients have not been established.

8.5 Geriatric Use

Clinical studies of dimethyl fumarate (the prodrug of BAFIERTAM) and of BAFIERTAM did not include sufficient numbers of patients aged 65 and over to determine whether they respond differently from younger patients.

11 DESCRIPTION

BAFIERTAM contains the active ingredient monomethyl fumarate, which is an unsaturated monomethyl ester. It is also known by its chemical name, fumaric acid monomethyl ester, (C₅H₆O₄). It has the following structure:



Monomethyl fumarate is a white to off-white powder that is highly soluble in water with a molecular mass of 130.10.

BAFIERTAM is provided as soft gelatin delayed-release capsules for oral administration, containing 95 mg of monomethyl fumarate consisting of the following inactive ingredients: Glyceryl caprylate/caprate; lactic acid; polyoxyl 40 hydrogenated castor oil; and povidone K30. The capsule shell, printed with black ink, contains the following inactive ingredients: gelatin; solution of sorbitans

and sorbitol; and titanium dioxide. The coating system includes the following inactive ingredients: colloidal anhydrous silica, GMCC Type 1 mono and di-glycerides, hypromellose type 2910, methacrylic acid and ethyl acrylate copolymer, polyethylene glycol (MW=400), polyvinyl alcohol part hydrolyzed, sodium bicarbonate, sodium lauryl sulfate, talc, titanium dioxide, and triethyl citrate.

12 CLINICAL PHARMACOLOGY

12.1 Mechanism of Action

The mechanism by which monomethyl fumarate (MMF) exerts its therapeutic effect in multiple sclerosis is unknown. MMF has been shown to activate the Nuclear factor (erythroid-derived 2)-like 2 (Nrf2) pathway *in vitro* and *in vivo* in animals and humans. The Nrf2 pathway is involved in the cellular response to oxidative stress. MMF has been identified as a nicotinic acid receptor agonist *in vitro*.

12.2 Pharmacodynamics

Potential to prolong the QT interval

In a placebo controlled thorough QT study performed in healthy subjects with dimethyl fumarate [the prodrug of BAFIERTAM], there was no evidence that dimethyl fumarate caused QT interval prolongation of clinical significance (i.e., the upper bound of the 90% confidence interval for the largest placebo-adjusted, baseline-corrected QTc was below 10 ms).

12.3 Pharmacokinetics

Pharmacokinetics of monomethyl fumarate have previously been characterized after oral administration of its prodrug, dimethyl fumarate, as delayed-release capsules, in healthy subjects and subjects with multiple sclerosis. After oral administration, dimethyl fumarate undergoes rapid presystemic hydrolysis by esterases and is converted to its active metabolite, monomethyl fumarate (MMF). Additional pharmacokinetic data of monomethyl fumarate were obtained after oral administration of BAFIERTAM, the monomethyl fumarate delayed-release capsules, in healthy subjects.

Absorption

Following oral administration of BAFIERTAM 190 mg (two 95 mg monomethyl fumarate delayed-release capsules) under fasting conditions, the median T_{max} of MMF is 4.03 hours; and the peak plasma concentration (C_{max}) and overall exposure (AUC) of monomethyl fumarate are bioequivalent to those after oral administration of 240 mg dimethyl fumarate delayed-release capsule.

A high-fat, high-calorie meal did not significantly affect the overall monomethyl fumarate plasma exposure (AUC), but decreased the C_{max} of MMF by 20%, with prolonged absorption. The median T_{max} of MMF was delayed from approximately 4.0 hours to 11 hours by a high fat meal.

Distribution

From studies with dimethyl fumarate (the prodrug of BAFIERTAM), it is shown that the apparent volume of distribution of MMF varies between 53 and 73 L in healthy subjects. Human plasma protein binding of MMF is 27-45% and independent of concentration.

Elimination

Metabolism

In humans, metabolism of MMF occurs through the tricarboxylic acid (TCA) cycle, with no involvement of the cytochrome P450 (CYP450) system. MMF, fumaric and citric acid, and glucose are the major metabolites of MMF in plasma.

Excretion

From studies with dimethyl fumarate (the prodrug of BAFIERTAM), exhalation of CO₂ is the primary route of elimination, accounting for approximately 60% of the dimethyl fumarate dose. Renal and fecal elimination are minor routes of elimination for MMF, accounting for 16% and 1% of the dimethyl fumarate dose respectively. Trace amounts of unchanged MMF were present in urine.

The plasma half-life of MMF is approximately 0.5 hour and no circulating MMF is present at 24 hours in the majority of individual following oral administration of BAFIERTAM 190 mg (two 95 mg monomethyl fumarate delayed-release capsules) under fasting conditions. Accumulation of MMF does not occur with multiple doses of dimethyl fumarate.

Specific Populations

Body weight, gender, and age differences do not require dosage adjustment.

No studies have been conducted in subjects with hepatic or renal impairment. However, neither condition would be expected to affect plasma exposure to MMF and therefore no dosage adjustment is necessary.

Drug Interaction Studies

No potential drug interactions with dimethyl fumarate or MMF were identified in in vitro CYP inhibition and induction studies, or in P-glycoprotein studies. Single doses of interferon beta-1a or glatiramer acetate did not alter the pharmacokinetics of MMF. Aspirin, when administered approximately 30 minutes before dimethyl fumarate, did not alter the pharmacokinetics of MMF.

Oral Contraceptives

The coadministration of the prodrug of BAFIERTAM, dimethyl fumarate, with a combined oral contraceptive (norelgestromin and ethinyl estradiol) did not elicit any relevant effects in oral contraceptives exposure. No interaction studies have been performed with oral contraceptives containing other progestogens.

13 NONCLINICAL TOXICOLOGY

13.1 Carcinogenesis, Mutagenesis, Impairment of Fertility

Carcinogenesis

Carcinogenicity studies of dimethyl fumarate (DMF) were conducted in mice and rats. In mice, oral administration of DMF (0, 25, 75, 200, and 400 mg/kg/day) for up to two years resulted in an increase in nonglandular stomach (forestomach) and kidney tumors: squamous cell carcinomas and papillomas of the forestomach in males and females at 200 and 400 mg/kg/day; leiomyosarcomas of the forestomach at 400 mg/kg/day in males and females; renal tubular adenomas and carcinomas at 200 and 400 mg/kg/day in males; and renal tubule adenomas at 400 mg/kg/day in females. Plasma MMF exposure (AUC) at the highest dose not associated with tumors in mice (75 mg/kg/day) was similar to that in humans at the recommended human dose (RHD) of MMF (380 mg/day).

In rats, oral administration of DMF (0, 25, 50, 100, and 150 mg/kg/day) for up to two years resulted in increases in squamous cell carcinomas and papillomas of the forestomach at all doses tested in males and females, and in testicular interstitial (Leydig) cell adenomas at 100 and 150 mg/kg/day. Plasma MMF AUC at the lowest dose tested was lower than that in humans at the RHD of MMF.

Mutagenesis

Monomethyl fumarate (MMF) was not mutagenic in the *in vitro* bacterial reverse mutation (Ames) assay. MMF was clastogenic in the *in vitro* chromosomal aberration assay in human peripheral blood lymphocytes in the absence of metabolic activation. DMF was not clastogenic in the *in vivo* micronucleus assay in the rat.

Impairment of Fertility

In male rats, oral administration of DMF (0, 75, 250, and 375 mg/kg/day) prior to and throughout the mating period had no effect on fertility; however, increases in non-motile sperm were observed at the mid and high doses. The no-effect dose for adverse effects on sperm is similar to the recommended human dose (RHD) of DMF (480 mg/day) on a body surface area (mg/m²) basis. MMF (380 mg/day) is bioequivalent to DMF (480 mg/day).

In female rats, oral administration of DMF (0, 20, 100, and 250 mg/kg/day) prior to and during mating and continuing to gestation day 7 caused disruption of the estrous cycle and increases in embryoletality at the highest dose tested. The highest dose not associated with adverse effects (100 mg/kg/day) is twice the RHD for DMF on a mg/m² basis. MMF (380 mg/day) is bioequivalent to DMF (480 mg/day).

Testicular toxicity (germinal epithelial degeneration, atrophy, hypospermia, and/or hyperplasia) was observed at clinically relevant doses in mice, rats, and dogs in subchronic and chronic oral toxicity studies of DMF, and in a chronic oral toxicity study evaluating a combination of four fumaric acid esters (including DMF) in rats.

13.2 Animal Toxicology and/or Pharmacology

Kidney toxicity was observed after repeated oral administration of dimethyl fumarate (DMF) in mice, rats, dogs, and monkeys. Renal tubule epithelia regeneration, suggestive of tubule epithelial injury, was observed in all species. Renal tubular hyperplasia was observed in rats with dosing for up to two years. Cortical atrophy and interstitial fibrosis were observed in dogs and monkeys at doses above 5 mg/kg/day. In monkeys, the highest dose tested (75 mg/kg/day) was associated with single cell necrosis and multifocal and diffuse interstitial fibrosis, indicating irreversible loss of renal tissue and function. In dogs and monkeys, the 5 mg/kg/day dose was associated with plasma MMF exposures less than or similar to that in humans at the recommended human dose (RHD) of MMF (380 mg/day).

A dose-related increase in incidence and severity of retinal degeneration was observed in mice following oral administration of DMF for up to two years at doses above 75 mg/kg/day, a dose associated with plasma MMF exposure (AUC) similar to that in humans at the RHD of MMF (380 mg/day).

14 CLINICAL STUDIES

The efficacy of BAFIERTAM is based upon bioavailability studies in healthy subjects comparing oral dimethyl fumarate delayed-release capsules to BAFIERTAM delayed-release capsules [see *Clinical Pharmacology* (12.3)].

The clinical studies described below were conducted using dimethyl fumarate.

The efficacy and safety of dimethyl fumarate were demonstrated in two studies (Studies 1 and 2) that evaluated dimethyl fumarate taken either twice or three times a day in patients with relapsing-remitting multiple sclerosis (RRMS). The starting dose for dimethyl fumarate was 120 mg twice or three times a day for the first 7 days, followed by an increase to 240 mg twice or three times a day. Both studies included patients who had experienced at least 1 relapse over the year preceding the trial or had a brain Magnetic Resonance Imaging (MRI) scan demonstrating at least one gadolinium-enhancing (Gd+) lesion within 6 weeks of randomization. The Expanded Disability Status Scale (EDSS) was also assessed and patients could have scores ranging from 0 to 5. Neurological evaluations were performed at baseline, every 3 months, and at the time of suspected relapse. MRI evaluations were performed at baseline, month 6, and year 1 and 2 in a subset of patients (44% in Study 1 and 48% in Study 2).

Study 1: Placebo-Controlled Trial in RRMS

Study 1 was a 2-year randomized, double-blind, placebo-controlled study in 1234 patients with RRMS. The primary endpoint was the proportion of patients relapsed at 2 years. Additional endpoints at 2 years included the number of new or newly enlarging T2 hyperintense lesions, number of new T1 hypointense lesions, number of Gd+ lesions, annualized relapse rate (ARR), and time to confirmed disability progression. Confirmed disability progression was defined as at least a 1 point increase from baseline EDSS (1.5 point increase for patients with baseline EDSS of 0) sustained for 12 weeks.

Patients were randomized to receive dimethyl fumarate 240 mg twice a day (n=410), dimethyl fumarate 240 mg three times a day (n=416), or placebo (n=408) for up to 2 years. The median age was 39 years, median time since diagnosis was 4 years, and median EDSS score at baseline was 2. The median time on study drug for all treatment arms was 96 weeks. The percentages of patients who completed 96 weeks on study drug per treatment group were 69% for patients assigned to dimethyl fumarate 240 mg twice a day, 69% for patients assigned to dimethyl fumarate 240 mg three times a day, and 65% for patients assigned to placebo groups.

Dimethyl fumarate had a statistically significant effect on all of the endpoints described above and the 240 mg three times daily dose showed no additional benefit over the dimethyl fumarate 240 mg twice daily dose. The results for this study (240 mg twice a day vs. placebo) are shown in Table 2 and Figure 1.

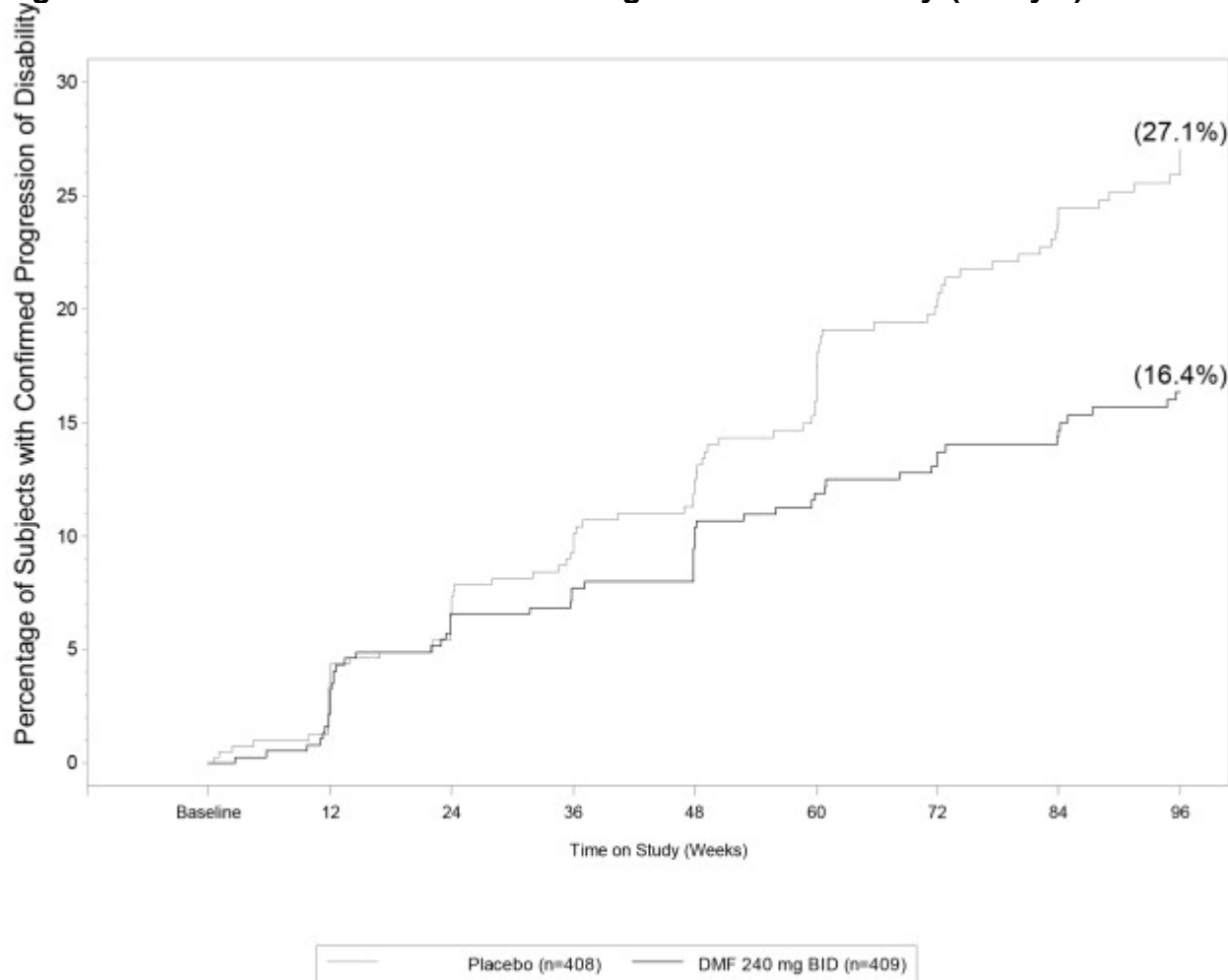
Table 2: Clinical and MRI Results of Study 1

	Dimethyl Fumarate 240 mg BID	Place bo	P-value
Clinical Endpoints	N=410	N=408	
Proportion relapsing (primary endpoint)	27%	46%	<0.0001
Relative risk reduction	49%		
Annualized relapse rate	0.172	0.364	<0.0001
Relative reduction	53%		
Proportion with disability progression	16%	27%	0.0050

Table 2: Clinical and MRI Results of Study 1

	Dimethyl Fumarate 240 mg BID	Placebo	P-value
Relative risk reduction	38%		
MRI Endpoints	N=152	N=165	
Mean number of new or newly enlarging T2 lesions over 2 years	2.6	17	<0.0001
Percentage of subjects with no new or newly enlarging lesions	45%	27%	
Number of Gd+ lesions at 2 years Mean (median)	0.1 (0)	1.8 (0)	
Percentage of subjects with			
0 lesions	93%	62%	
1 lesion	5%	10%	
2 lesions	<1%	8%	
3 to 4 lesions	0	9%	
5 or more lesions	<1%	11%	
Relative odds reduction (percentage)	90%		<0.0001
Mean number of new T1 hypointense lesions over 2 years	1.5	5.6	<0.0001

Figure 1: Time to 12-Week Confirmed Progression of Disability (Study 1)



NOTE: Confirmed progression of disability is defined as at least 1.0 point increase on the EDSS from a baseline EDSS ≥ 1.0 confirmed for 12 weeks or at least a 1.5 point increase on the EDSS from a baseline EDSS of 0 confirmed for 12 weeks.

Study 2: Placebo-Controlled Trial in RRMS

Study 2 was a 2-year multicenter, randomized, double-blind, placebo-controlled study that also included an open-label comparator arm in patients with RRMS. The primary endpoint was the annualized relapse rate at 2 years. Additional endpoints at 2 years included the number of new or newly enlarging T2 hyperintense lesions, number of T1 hypointense lesions, number of Gd+ lesions, proportion of patients relapsed, and time to confirmed disability progression as defined in Study 1.

Patients were randomized to receive dimethyl fumarate 240 mg twice a day (n=359), dimethyl fumarate 240 mg three times a day (n=345), an open-label comparator (n=350), or placebo (n=363) for up to 2 years. The median age was 37 years, median time since diagnosis was 3 years, and median EDSS score at baseline was 2.5. The median time on study drug for all treatment arms was 96 weeks. The percentages of patients who completed 96 weeks on study drug per treatment group were 70% for patients assigned to dimethyl fumarate 240 mg twice a day, 72% for patients assigned to dimethyl fumarate 240 mg three times a day, and 64% for patients assigned to placebo groups.

Dimethyl fumarate had a statistically significant effect on the relapse and MRI endpoints described above. There was no statistically significant effect on disability progression. The dimethyl fumarate 240 mg three times daily dose resulted in no additional benefit over the dimethyl fumarate 240 mg twice daily dose. The results for this study (240 mg twice a day vs. placebo) are shown in Table 3.

Table 3: Clinical and MRI Results of Study 2

	Dimethyl Fumarate 240 mg BID	Placebo	P-value
Clinical Endpoints	N=359	N=363	
Annualized relapse rate	0.224	0.401	<0.0001
Relative reduction	44%		
Proportion relapsing	29%	41%	0.0020
Relative risk reduction	34%		
Proportion with disability progression	13%	17%	0.25
Relative risk reduction	21%		
MRI Endpoints	N=147	N=144	
Mean number of new or newly enlarging T2 lesions over 2 years	5.1	17.4	<0.0001
Percentage of subjects with no new or newly enlarging lesions	27%	12%	
Number of Gd+ lesions at 2 years			
Mean (median)	0.5 (0.0)	2.0 (0.0)	
Percentage of subjects with			
0 lesions	80%	61%	
1 lesion	11%	17%	
2 lesions	3%	6%	
3 to 4 lesions	3%	2%	
5 or more lesions	3%	14%	
Relative odds reduction (percentage)	74%		<0.0001
Mean number of new T1 hypointense lesions over 2 years	3.0	7.0	<0.0001

16 HOW SUPPLIED/STORAGE AND HANDLING

16.1 How Supplied

BAFIERTAM is available as soft gelatin delayed-release capsules containing 95 mg of monomethyl fumarate. The 95 mg capsules are white, opaque, oval, and coated with “95” printed in black ink on the body. BAFIERTAM is available as follows:

95 mg capsules: bottle of 120 capsules (NDC 69387-001-01).

16.2 Storage and Handling

Unopened Bottle

Store unopened bottles in refrigerator at 2°C to 8°C (35°F to 46°F). Do not freeze. Under these conditions, BAFIERTAM is stable until the expiration date indicated on the package.

Opened Bottle

Opened bottles may be stored at 20°C to 25°C (68°F to 77°F); excursions between 15°C and 30°C (59°F and 86°F) permitted [see USP Controlled Room Temperature]. Protect the capsules from light. Store in original container. Under these conditions, BAFIERTAM is stable for 3 months.

Capsules may become deformed if kept at high temperatures.

17 PATIENT COUNSELING INFORMATION

Advise the patient to read the FDA-approved patient labeling (Patient Information).

Dosage

Inform patients that they will be provided one strength of BAFIERTAM when starting treatment: take one capsule for the 7 day starter dose and two capsules for the maintenance dose, both to be taken twice daily. Inform patients to swallow BAFIERTAM capsules whole and intact. Inform patients to not crush, chew, or mix capsule contents with food. Inform patients that BAFIERTAM can be taken with or without food [see *Dosage and Administration* (2.2, 2.3)].

Anaphylaxis and Angioedema

Advise patients to discontinue BAFIERTAM and seek medical care if they develop signs and symptoms of anaphylaxis or angioedema [see *Warnings and Precautions* (5.1)].

Progressive Multifocal Leukoencephalopathy

Inform patients that progressive multifocal leukoencephalopathy (PML) has occurred in patients who received dimethyl fumarate (the prodrug of monomethyl fumarate). Inform the patient that PML is characterized by a progression of deficits and usually leads to death or severe disability over weeks or months. Instruct the patient of the importance of contacting their healthcare provider if they develop any symptoms suggestive of PML. Inform the patient that typical symptoms associated with PML are diverse, progress over days to weeks, and include progressive weakness on one side of the body or clumsiness of limbs, disturbance of vision, and changes in thinking, memory, and orientation leading to confusion and personality changes [see *Warnings and Precautions* (5.2)].

Herpes Zoster and Other Serious Opportunistic Infections

Inform patients that herpes zoster and other serious opportunistic infections have occurred in patients who received dimethyl fumarate. Instruct the patient of the importance of contacting their healthcare provider if they develop any signs or symptoms associated with herpes zoster or other serious opportunistic infections [see *Warnings and Precautions* (5.3)].

Lymphocyte Counts

Inform patients that BAFIERTAM may decrease lymphocyte counts. A blood test should be obtained before they start therapy. Blood tests are also recommended after 6 months of treatment, every 6 to 12 months thereafter, and as clinically indicated [see *Warnings and Precautions* (5.4), *Adverse Reactions* (6.1)].

Liver Injury

Inform patients that BAFIERTAM may cause liver injury. Instruct patients treated with BAFIERTAM to report promptly to their healthcare provider any symptoms that may indicate liver injury, including fatigue, anorexia, right upper abdominal discomfort, dark urine, or jaundice. A blood test should be obtained before patients start therapy and during treatment, as clinically indicated [see *Warnings and Precautions* (5.5)].

Flushing and Gastrointestinal (GI) Reactions

Flushing and GI reactions (abdominal pain, diarrhea, and nausea) are the most common reactions, especially at the initiation of therapy, and may decrease over time. Advise patients to contact their healthcare provider if they experience persistent and/or severe flushing or GI reactions. Advise patients experiencing flushing that taking a non-enteric coated aspirin prior to taking BAFIERTAM may help [see *Adverse Reactions* (6.1)]

Pregnancy

Instruct patients that if they are pregnant or plan to become pregnant while taking BAFIERTAM they should inform their healthcare provider [see *Use in Specific Populations* (8.1)].

Manufactured by: Banner Life Sciences LLC, High Point, NC 27265

BAFIERTAM is a registered trademark of Banner Life Sciences LLC.

© Banner Life Sciences 2020

Patient Information
BAFIERTAM™ (bah"feer'tam)
(monomethyl fumarate)
delayed-release capsules, for oral use

What is BAFIERTAM?

- BAFIERTAM is a prescription medicine used to treat relapsing forms of multiple sclerosis (MS), to include clinically isolated syndrome, relapsing-remitting disease, and active secondary progressive disease, in adults.
- It is not known if BAFIERTAM is safe and effective in children.

Do not take BAFIERTAM if you:

- have had an allergic reaction (such as welts, hives, swelling of the face, lips, mouth or tongue, or difficulty breathing) to monomethyl fumarate, dimethyl fumarate, diroximel fumarate, or any of the ingredients in BAFIERTAM. See "**What are the ingredients in BAFIERTAM?**" for a complete list of ingredients.
- are taking dimethyl fumarate or diroximel fumarate.

Before taking and while you take BAFIERTAM, tell your doctor about all of your medical conditions, including if you:

- have liver problems
- have or have had low white blood cell counts or an infection
- are pregnant or plan to become pregnant. It is not known if BAFIERTAM will harm your unborn baby
- are breastfeeding or plan to breastfeed. It is not known if BAFIERTAM passes into your breast milk. Talk to your healthcare provider about the best way to feed your baby while using BAFIERTAM.

Tell your doctor about all the medicines you take including prescription and over-the-counter medicines, vitamins, and herbal supplements.

How should I take BAFIERTAM?

- Take BAFIERTAM exactly as your doctor tells you to take it.
- You will be given 1 strength of BAFIERTAM when starting your treatment.
- The recommended starting dose is one 95 mg capsule taken by mouth 2 times a day for 7 days.
- The recommended dose after 7 days is two 95 mg capsules taken by mouth 2 times a day.
- BAFIERTAM can be taken with or without food.
- Swallow BAFIERTAM capsules whole and intact. Do not crush, chew, or mix the contents with food.
- If you take too much BAFIERTAM, call your doctor or go to the nearest hospital emergency room right away.

What are the possible side effects of BAFIERTAM?

BAFIERTAM may cause serious side effects including:

- **allergic reaction** (such as welts, hives, swelling of the face, lips, mouth or tongue, or difficulty breathing). Stop taking BAFIERTAM and get emergency medical help right away if you get any of these symptoms.
- **PML (progressive multifocal leukoencephalopathy)** a rare brain infection that usually leads to death or severe disability over a period of weeks or months. Tell your doctor right away if you get any of these symptoms of PML:
 - weakness on one side of the body that gets worse
 - vision problems
 - confusion
 - clumsiness in your arms or legs
 - changes in thinking and memory
 - personality changes
- **herpes zoster infections (shingles)**, including central nervous system infections
- **other serious infections**
- **decreases in your white blood cell count** Your doctor should do a blood test to check your white blood cell count before you start treatment with BAFIERTAM and while you are on therapy. You should have blood tests after 6 months of treatment and every 6 to 12 months after that.
- **liver problems. BAFIERTAM may cause serious liver problems that may lead to liver failure, a liver transplant, or death.** Your doctor should do blood tests to check your liver function before you start taking BAFIERTAM and during treatment if needed. Tell your doctor right away if you get any of these symptoms of a liver problem during treatment:
 - severe tiredness
 - loss of appetite
 - pain on the right side of your stomach
 - have dark or brown (tea color) urine
 - yellowing of your skin or the white part of your eyes

The most common side effects of BAFIERTAM include:

- flushing, redness, itching, or rash

- nausea, vomiting, diarrhea, stomach pain, or indigestion
- Flushing and stomach problems are the most common reactions, especially at the start of treatment, and may decrease over time. Call your doctor if you have any of these symptoms and they bother you or do not go away. Ask your doctor if taking aspirin before taking BAFIERTAM may reduce flushing.

These are not all the possible side effects of BAFIERTAM. Call your doctor for medical advice about side effects. You may report side effects to FDA at 1-800-FDA-1088.

For more information go to dailymed.nlm.nih.gov.

How should I store BAFIERTAM?

- Store BAFIERTAM in the original container.
- Protect the capsules from light.
- Store unopened bottles of BAFIERTAM in the refrigerator between 35°F to 46°F (2°C to 8°C)
- Store opened bottles of BAFIERTAM at room temperature between 68°F to 77°F (20°C to 25°C). BAFIERTAM capsules are good for 3 months after the bottle is opened. Throw away BAFIERTAM capsules if the bottle has been opened for more than 3 months.
- Capsules may become deformed if kept at high temperatures.
- **Keep BAFIERTAM and all medicines out of the reach of children.**

General Information about the safe and effective use of BAFIERTAM

Medicines are sometimes prescribed for purposes other than those listed in this Patient Information. Do not use BAFIERTAM for a condition for which it was not prescribed. Do not give BAFIERTAM to other people, even if they have the same symptoms that you have. It may harm them.

If you would like more information, talk to your doctor or pharmacist. You can ask your pharmacist or doctor for information about BAFIERTAM that is written for health professionals.

What are the ingredients in BAFIERTAM?

Active ingredient: monomethyl fumarate

Inactive ingredients: Glyceryl caprylate/caprates; lactic acid; polyoxyl 40 hydrogenated castor oil; and povidone K30. The capsule shell, printed with black ink, contains the following inactive ingredients: gelatin; solution of sorbitans and sorbitol; and titanium dioxide. The coating system includes the following inactive ingredients: colloidal anhydrous silica, GMCC Type 1 mono and di-glycerides, hypromellose type 2910, methacrylic acid and ethyl acrylate copolymer, polyethylene glycol (MW=400), polyvinyl alcohol part hydrolyzed, sodium bicarbonate, sodium lauryl sulfate, talc, titanium dioxide and triethyl citrate.

Manufactured by: Banner Life Sciences LLC, High Point, NC 27265, www.BAFIERTAM.com or call 1-800-456-2255

This Patient Information has been approved by the U.S. Food and Drug Administration.

Revised: April /2020