

FRONT



BACK

LASER ENCODING AREA FOR LOT AND EXPIRATION INFORMATION. PRINTED IN ONE SOLID COLOR, BLACK OR DARK BLUE.

BACK

000065284

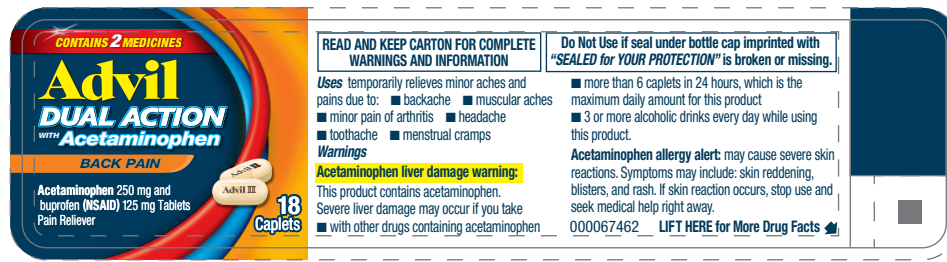
MODIFIED DRUG FACTS TEXT DEFINED	TYPE SIZE
• HEADINGS	4.5 pt
• SUBHEADINGS/BODY TEXT	4.5 pt
• LEADING	4.5 pt



000067461

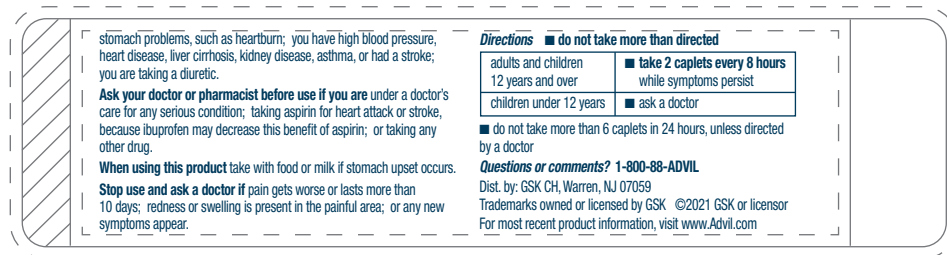
DRUG FACTS TEXT DEFINED	TYPE SIZE
• DRUG FACTS TITLE	9 pt
• DRUG FACTS CONTINUED	8 pt
• HEADINGS	8 pt
• SUBHEADINGS/BODY TEXT	6 pt
• LEADING	6.5 pt
• # OF CHARACTERS PER INCH	<39
• BULLETS	5 pt
• SPACE BEFORE BULLET	2 ems
• BARLINES, HAIRLINES	1.5 pt, .5 pt
• SPACE BETWEEN HAIRLINES AND BOX END	2 spaces

TOP (FACE)
PANEL 1

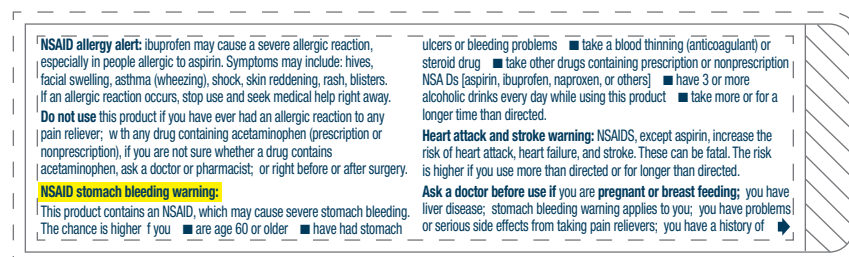


FOR LOT & EXPIRATION AREA,
UNVARNISHED AND PRINTED
IN BLACK OR DARK BLUE.

BASE
PANEL 3

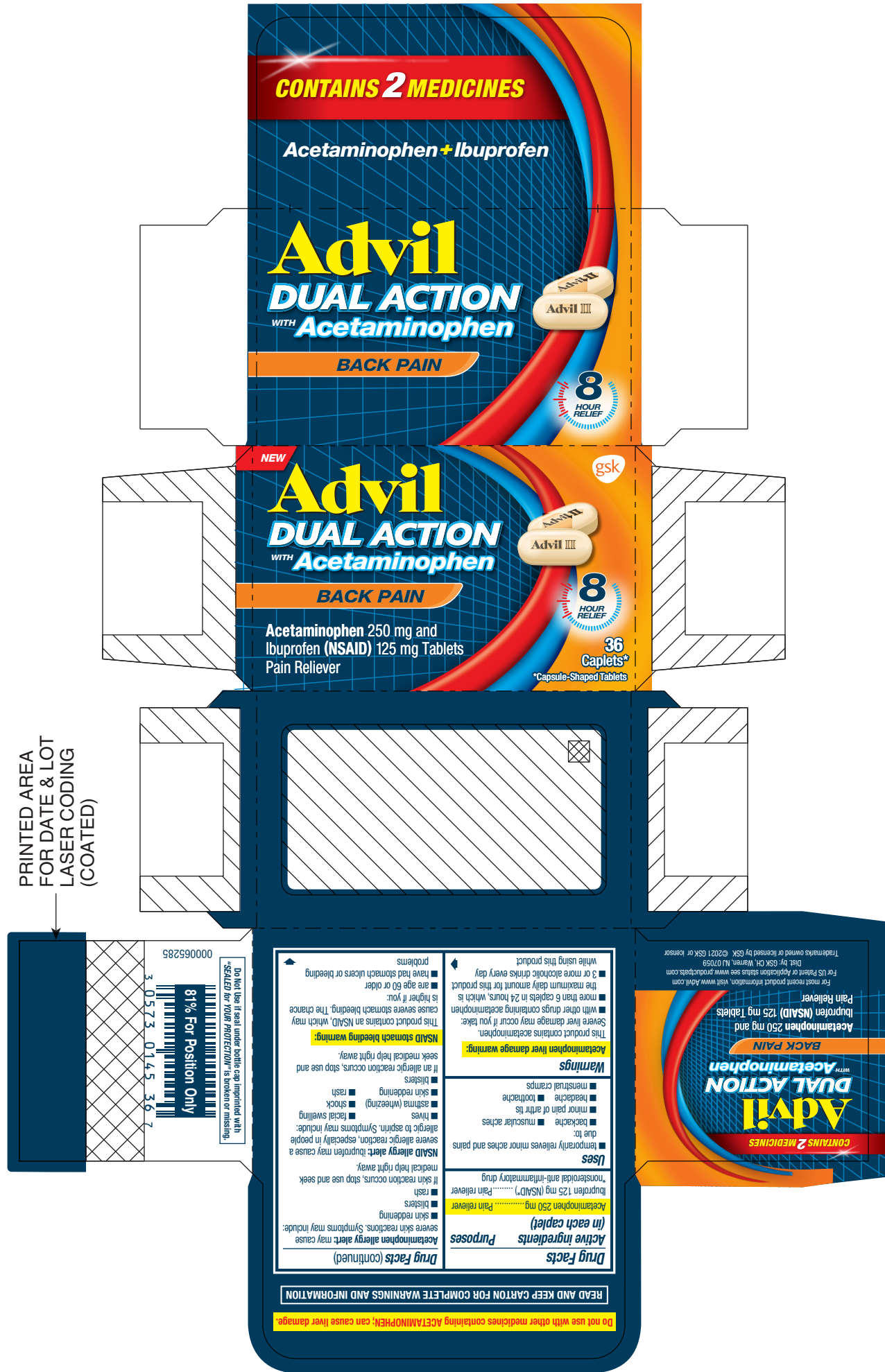


TOP (BACK)
PANEL 2



000067462

DRUG FACTS TEXT DEFINED	TYPE SIZE
• HEADINGS	6 pt
• SUBHEADINGS/BODY TEXT	6 pt
• LEADING	6.5 pt
• BULLETS	5 pt
• SPACE BEFORE BULLET	2 ems
• WARNING BOX LINE	.5 pt



000065285

DRUG FACTS TEXT DEFINED	TYPE SIZE
• DRUG FACTS TITLE	9 pt
• DRUG FACTS CONTINUED	8 pt
• HEADINGS	8 pt
• SUBHEADINGS/BODY TEXT	6 pt
• LEADING	6.5 pt
• # OF CHARACTERS PER INCH	<39
• BULLETS	5 pt
• SPACE BEFORE BULLET	2 ems
• BARLINES, HAIRLINES	1.5 pt, .5 pt
• SPACE BETWEEN HAIRLINES AND BOX END	2 spaces

TOP (FACE)
PANEL 1

CONTAINS 2 MEDICINES

Advil
DUAL ACTION
WITH **Acetaminophen**
BACK PAIN

Acetaminophen 250 mg and
ibuprofen (NSAID) 125 mg Tablets
Pain Reliever

ADVIIL

36
Caplets

READ AND KEEP CARTON FOR COMPLETE WARNINGS AND INFORMATION

Uses temporarily relieves minor aches and pains due to: ■ backache ■ muscular aches
■ minor pain of arthritis ■ headache
■ toothache ■ menstrual cramps

Warnings
Acetaminophen liver damage warning:
This product contains acetaminophen. Severe liver damage may occur if you take
■ with other drugs containing acetaminophen

Do Not Use if seal under bottle cap imprinted with **"SEALED for YOUR PROTECTION"** is broken or missing.
■ more than 6 caplets in 24 hours, which is the maximum daily amount for this product
■ 3 or more alcoholic drinks every day while using this product.

Acetaminophen allergy alert: may cause severe skin reactions. Symptoms may include: skin reddening, blisters, and rash. If skin reaction occurs, stop use and seek medical help right away.
000065286 **LIFT HERE for More Drug Facts**

FOR LOT & EXPIRATION AREA,
UNVARNISHED AND PRINTED
IN BLACK OR DARK BLUE.

BASE
PANEL 3

stomach problems, such as heartburn; you have high blood pressure, heart disease, liver cirrhosis, kidney disease, asthma, or had a stroke; you are taking a diuretic.

Ask your doctor or pharmacist before use if you are under a doctor's care for any serious condition; taking aspirin for heart attack or stroke, because ibuprofen may decrease this benefit of aspirin; or taking any other drug.

When using this product take with food or milk if stomach upset occurs.

Stop use and ask a doctor if pain gets worse or lasts more than 10 days; redness or swelling is present in the painful area; or any new symptoms appear.

Directions ■ **do not take more than directed**

adults and children 12 years and over	■ take 2 caplets every 8 hours while symptoms persist
children under 12 years	■ ask a doctor

■ do not take more than 6 caplets in 24 hours, unless directed by a doctor

Questions or comments? 1-800-88-ADVIL
Dist. by: GSK CH, Warren, NJ 07059
Trademarks owned or licensed by GSK ©2021 GSK or licensor
For most recent product information, visit www.Advil.com

TOP (BACK)
PANEL 2

NSAID allergy alert: ibuprofen may cause a severe allergic reaction, especially in people allergic to aspirin. Symptoms may include: hives, facial swelling, asthma (wheezing), shock, skin reddening, rash, blisters. If an allergic reaction occurs, stop use and seek medical help right away.

Do not use this product if you have ever had an allergic reaction to any pain reliever; with any drug containing acetaminophen (prescription or nonprescription), if you are not sure whether a drug contains acetaminophen, ask a doctor or pharmacist; or right before or after surgery.

NSAID stomach bleeding warning:
This product contains an NSAID, which may cause severe stomach bleeding. The chance is higher if you
■ are age 60 or older ■ have had stomach

ulcers or bleeding problems ■ take a blood thinning (anticoagulant) or steroid drug ■ take other drugs containing prescription or nonprescription NSAIDs (aspirin, ibuprofen, naproxen, or others) ■ have 3 or more alcoholic drinks every day while using this product ■ take more or for a longer time than directed.

Heart attack and stroke warning: NSAIDs, except aspirin, increase the risk of heart attack, heart failure, and stroke. These can be fatal. The risk is higher if you use more than directed or for longer than directed.

Ask a doctor before use if you are pregnant or breast feeding; you have liver disease; stomach bleeding warning applies to you; you have problems or serious side effects from taking pain relievers; you have a history of

000065286

DRUG FACTS TEXT DEFINED	TYPE SIZE
• HEADINGS	6 pt
• SUBHEADINGS/BODY TEXT	6 pt
• LEADING	6.5 pt
• BULLETS	5 pt
• SPACE BEFORE BULLET	2 ems
• WARNING BOX LINE	.5 pt

Drug Facts (continued)

Other information

- read all warnings and directions before use. Keep carton.
- store at 20-25°C (68-77°F)
- avoid excessive heat above 40°C (104°F)

Inactive ingredients camauaba wax, colloidal silicon dioxide, croscarmellose sodium, ferric oxides, glyceryl dibehenate, hypromellose, pharmaceutical ink, polydextrose, polyethylene glycol, pregelatinized starch, titanium dioxide

Questions or comments?
call weekdays 9 AM to 5 PM at 1-800-88-ADVIL

BASE PANEL

Drug Facts (continued)

if pregnant or breast-feeding, ask a health professional before use. It is especially important not to use ibuprofen at 20 weeks or later in pregnancy unless definitely directed to do so by a doctor because it may cause problems in the unborn child or complications during delivery.

Keep out of reach of children. In case of overdose, get medical help or contact a Poison Control Center right away. Prompt medical attention is critical for adults as well as for children even if you do not notice any signs or symptoms.

Drug Facts (continued)

Directions

do not take more than directed

adults and children 12 years and over	take 2 caplets every 8 hours while symptoms persist
children under 12 years	ask a doctor

do not take more than 6 caplets in 24 hours, unless directed by a doctor

Drug Facts (continued)

- take a blood thinning (anticoagulant) or steroid drug
- take other drugs containing prescription or nonprescription NSAIDs (aspirin, ibuprofen, naproxen, or others)
- have 3 or more alcoholic drinks every day while using this product
- take more or for a longer time than directed

Heart attack and stroke warning: NSAIDs, except aspirin, increase the risk of heart attack, heart failure, and stroke. These can be fatal. The risk is higher if you use more than directed or for longer than directed.

Do not use

- with any other drug containing acetaminophen (prescription or nonprescription). If you are not sure whether a drug contains acetaminophen, ask a doctor or pharmacist

LIFT HERE

000065287

PANEL #4

PANEL #1

Drug Facts (continued)

- if you have ever had an allergic reaction to acetaminophen or any other pain reliever
- right before or after heart surgery

Ask a doctor before use if you are

- you have liver disease
- stomach bleeding warning applies to you
- you have problems or serious side effects from taking pain relievers
- you have a history of stomach problems, such as heartburn

Drug Facts (continued)

- you have high blood pressure, heart disease, liver cirrhosis, kidney disease, asthma, or had a stroke
- you are taking a diuretic

Ask a doctor or pharmacist before use if you are

- under a doctor's care for any serious condition
- taking aspirin for heart attack or stroke, because ibuprofen may decrease this benefit of aspirin
- taking any other drug

Drug Facts (continued)

When using this product

- take with food or milk if stomach upset occurs

Stop use and ask a doctor if

- you experience any of the following signs of stomach bleeding:
 - feel faint
 - vomit blood
 - have bloody or black stools
 - have stomach pain that does not get better

Drug Facts (continued)

- you have symptoms of heart problems or stroke:
 - chest pain
 - trouble breathing
 - weakness in one part or side of body
 - slurred speech
 - leg swelling
 - pain gets worse or lasts more than 10 days
 - redness or swelling is present in the painful area
 - any new symptoms appear

PANEL #2

PANEL #3

000065287

DRUG FACTS TEXT DEFINED	TYPE SIZE
• DRUG FACTS TITLE	N/A
• DRUG FACTS CONTINUED	8 pt
• HEADINGS	8 pt
• SUBHEADINGS/BODY TEXT	6 pt
• LEADING	6.5 pt
• # OF CHARACTERS PER INCH	<39
• BULLETS	5 pt
• SPACE BEFORE BULLET	N/A
• BARLINES, HAIRLINES	1.5 pt, .5 pt
• SPACE BETWEEN HAIRLINES AND BOX END	2 spaces

CONTAINS 2 MEDICINES

Advil
DUAL ACTION
 WITH Acetaminophen
BACK PAIN

Advil III

Acetaminophen 250 mg and
 Ibuprofen (NSAID) 125 mg Tablets
 Pain Reliever

72
 Caplets

Do Not Use if seal under bottle cap imprinted with "SEALED for YOUR PROTECTION" is broken or missing.

Uses: temporarily relieves minor aches and pains due to: ■ backache
 ■ muscular aches ■ minor pain of arthritis ■ headache ■ toothache
 ■ menstrual cramps

Warnings

Acetaminophen liver damage warning: This product contains acetaminophen. Severe liver damage may occur if you take: ■ with other drugs containing acetaminophen
 ■ more than 6 caplets in 24 hours, which is the maximum daily amount for this product
 ■ 3 or more alcoholic drinks every day while using this product.

Acetaminophen allergy alert: may cause severe skin reactions. Symptoms may include: skin reddening, blisters, and rash. If skin reaction occurs, stop use and seek medical help right away.

NSAID allergy alert: ibuprofen may cause a severe allergic reaction, especially in people allergic to aspirin. Symptoms may include: hives, facial swelling, asthma (wheezing), shock, skin reddening, rash, blisters. If an allergic reaction occurs, stop use and seek medical help right away.

Do not use this product if you have ever had an allergic reaction to any pain reliever, with any drug containing acetaminophen (prescription or nonprescription), if you are not sure whether a drug contains acetaminophen, ask a doctor or pharmacist, or right before or after surgery.

NSAID stomach bleeding warning: This product contains an NSAID, which may cause severe stomach bleeding. The chance is higher if you: ■ are age 60 or older ■ have had stomach ulcers or bleeding problems ■ take a blood thinning (anticoagulant) or steroid drug ■ take other drugs containing prescription or nonprescription NSAIDs (aspirin, ibuprofen, naproxen, or others) ■ have 3 or more alcoholic drinks every day while using this product. ■ take more or for a longer time than directed.

Heart attack and stroke warning: NSAIDs, except aspirin, increase the risk of heart attack, heart failure, and stroke. These can be fatal. The risk is higher if you use more than directed or for longer than directed.

Ask a doctor before use if you are pregnant or breast feeding: you have liver disease; stomach bleeding warning applies to you; you have problems or serious side effects from taking pain relievers; you have a history of stomach problems, such as heartburn; you have high blood pressure, heart disease, liver cirrhosis, kidney disease, asthma, or had a stroke; you are taking a diuretic.

Ask your doctor or pharmacist before use if you are under a doctor's care for any serious condition: taking aspirin for heart attack or stroke, because ibuprofen may decrease this benefit of aspirin; or taking any other drug.

When using this product take with food or milk if stomach upset occurs.

Stop use and ask a doctor if pain gets worse or lasts more than 10 days; redness or swelling is present in the painful area; or any new symptoms appear.

Directions

■ do not take more than directed

adults and children 12 years and over	■ take 2 caplets every 8 hours while symptoms persist
children under 12 years	■ ask a doctor

■ do not take more than 6 caplets in 24 hours, unless directed by a doctor

Questions or comments? 1-800-88-ADVIL.
 Dist. by GSK GI, Warren, NJ 07059
 Trademarks owned or licensed by GSK. ©2021 GSK or itsensor
 For most recent product information, visit www.Advil.com

000067464

READ AND KEEP CARTON FOR COMPLETE WARNINGS AND INFORMATION

UNVARNISHED AND PRINTED IN BLACK OR DARK BLUE FOR LOT & EXPIRATION AREA.

000067464

MODIFIED DRUG FACTS TEXT DEFINED	TYPE SIZE
• HEADINGS	4.5 pt
• SUBHEADINGS/BODY TEXT	4.5 pt
• LEADING	4.95 pt
• BULLETS	3.5 pt
• SPACE BEFORE BULLET	2 ems
• BARLINES, HAIRLINES	.5 pt

TOP
PANEL 1

<p>Drug Facts (continued)</p> <ul style="list-style-type: none"> ■ if you have ever had an allergic reaction to acetaminophen or any other pain reliever ■ right before or after heart surgery <p>Ask a doctor before use if</p> <ul style="list-style-type: none"> ■ you have liver disease ■ stomach bleeding warning applies to you ■ you have problems or serious side effects from taking pain relievers ■ you have a history of stomach problems, such as heartburn ■ you have high blood pressure, heart disease, liver cirrhosis, kidney disease, asthma, or had a stroke ■ you are taking a diuretic 	<p>Drug Facts (continued)</p> <p>Ask a doctor or pharmacist before use if you are</p> <ul style="list-style-type: none"> ■ under a doctor's care for any serious condition ■ taking aspirin for heart attack or stroke, because ibuprofen may decrease this benefit of aspirin ■ taking any other drug <p>When using this product</p> <ul style="list-style-type: none"> ■ take with food or milk if stomach upset occurs <p>Stop use and ask a doctor if</p> <ul style="list-style-type: none"> ■ you experience any of the following signs of stomach bleeding: <ul style="list-style-type: none"> ■ feel faint ■ vomit blood ■ have bloody or black stools ■ have stomach pain that does not get better
-----------------------------------------------------------------------------------------------------------------------------------------------------------------------------------------------------------------------------------------------------------------------------------------------------------------------------------------------------------------------------------------------------------------------------------------------------------------------------------------------------------------------------------------------------------------------------------------------------------------------------------------------------------------------------------------------------------------	--------------------------------------------------------------------------------------------------------------------------------------------------------------------------------------------------------------------------------------------------------------------------------------------------------------------------------------------------------------------------------------------------------------------------------------------------------------------------------------------------------------------------------------------------------------------------------------------------------------------------------------------------------------------------------------------------------------------------------------------------------------------------------------------------------------------------------------------------

000067465

LIFT HERE

BACK
PANEL 2

<p>Drug Facts (continued)</p> <ul style="list-style-type: none"> ■ you have symptoms of heart problems or stroke: <ul style="list-style-type: none"> ■ chest pain ■ trouble breathing ■ weakness in one part or side of body ■ slurred speech ■ leg swelling ■ pain gets worse or lasts more than 10 days ■ redness or swelling is present in the painful area ■ any new symptoms appear <p>if pregnant or breast-feeding, ask a health professional before use. It is especially important not to use ibuprofen at 20 weeks or later in pregnancy unless definitely directed to do so by a doctor because it may cause problems in the unborn child or complications during delivery.</p>	<p>Drug Facts (continued)</p> <p>Keep out of reach of children. In case of overdose, get medical help or contact a Poison Control Center right away. Prompt medical attention is critical for adults as well as for children even if you do not notice any signs or symptoms.</p> <p>Directions</p> <p>do not take more than directed</p> <table border="1" style="width: 100%;"> <tr> <td style="padding: 2px;">adults and children 12 years and over</td> <td style="padding: 2px;">■ take 2 caplets every 8 hours while symptoms persist</td> </tr> <tr> <td style="padding: 2px;">children under 12 years</td> <td style="padding: 2px;">■ ask a doctor</td> </tr> </table> <p>■ do not take more than 6 caplets in 24 hours, unless directed by a doctor</p>	adults and children 12 years and over	■ take 2 caplets every 8 hours while symptoms persist	children under 12 years	■ ask a doctor
adults and children 12 years and over	■ take 2 caplets every 8 hours while symptoms persist				
children under 12 years	■ ask a doctor				

BASE
PANEL 3

<p>Drug Facts (continued)</p> <p>Other information</p> <ul style="list-style-type: none"> ■ read all warnings and directions before use. Keep carton. ■ store at 20-25°C (68-77°F) ■ avoid excessive heat above 40°C (104°F) <p>Inactive ingredients carnauba wax, colloidal silicon dioxide, croscarmellose sodium, ferric oxides, glyceryl dibehenate, hypromellose, pharmaceutical ink, polydextrose, polyethylene glycol, pregelatinized starch, titanium dioxide</p> <p>Questions or comments? call weekdays 9 AM to 5 PM at 1-800-88-ADVIL</p>

000067465

DRUG FACTS TEXT DEFINED	TYPE SIZE
• DRUG FACTS TITLE	N/A
• DRUG FACTS CONTINUED	8 pt
• HEADINGS	8 pt
• SUBHEADINGS/BODY TEXT	6 pt
• LEADING	6.5 pt
• # OF CHARACTERS PER INCH	<39
• BULLETS	5 pt
• SPACE BEFORE BULLET	2 ems
• BARLINES, HAIRLINES	1.5 pt, .5 pt
• SPACE BETWEEN HAIRLINES AND BOX END	2 spaces

CONTAINS 2 MEDICINES

Acetaminophen + Ibuprofen

Advil
DUAL ACTION
WITH Acetaminophen

BACK PAIN

8 HOUR RELIEF

NEW

Advil
DUAL ACTION
WITH Acetaminophen

BACK PAIN

Acetaminophen 250 mg and Ibuprofen (NSAID) 125 mg Tablets Pain Reliever

144 Caplets*
*Capsule-Shaped Tablets

gsk

Drug Facts (continued)

Ask a doctor or pharmacist before use if you are:

- under a doctor's care for any serious condition
- taking aspirin for heart attack or stroke, because ibuprofen may decrease the benefit of aspirin
- taking any other drug

When using this product:

- take with food or milk if stomach upset occurs
- stop use and ask a doctor if:

- you experience any of the following signs of stomach bleeding:
- feel faint
- vomit blood
- have bloody or black stools
- have stomach pain that does not get better
- you have symptoms of heart problems or stroke:
- chest pain
- trouble breathing
- weakness in one part or side of body
- slurred speech
- leg swelling
- stomach pain
- stomach pain that lasts more than 10 days
- redness or swelling is present in the painful area
- any new symptoms appear

Other Information

- read all warnings and directions before use. Keep carton.
- store at 20-25°C (68-77°F)
- avoid excessive heat above 40°C (104°F)

Directions

do not take more than directed

adults and children	take 2 caplets every 8 hours while symptoms persist
children under 12 years	ask a doctor

Drug Facts (continued)

Warnings

Acetaminophen liver damage warning: This product contains acetaminophen. Severe liver damage may occur if you take:

- 3 or more alcoholic drinks every day while using this product
- more than 6 caplets in 24 hours, which is the maximum daily amount for this product
- with other drugs containing acetaminophen

Acetaminophen allergy alert: many cause severe skin reactions. Symptoms may include:

- skin redness
- hives
- itching
- swelling
- skin rash

NSAID allergy alert: ibuprofen may cause a severe allergic reaction, especially in people allergic to aspirin. Symptoms may include:

- skin redness
- hives
- swelling
- skin rash
- itching
- stomach pain
- stomach pain that lasts more than 10 days
- redness or swelling is present in the painful area
- any new symptoms appear

Do not use:

- with any other drug containing acetaminophen (prescription or nonprescription), if you are not sure whether a drug contains acetaminophen, ask a doctor or pharmacist
- if you have ever had an allergic reaction to acetaminophen or any other pain reliever
- right before or after heart surgery

Ask a doctor before use if:

- right before or after heart surgery
- you have liver disease
- stomach bleeding warning applies to you
- you have problems or serious side effects from taking pain relievers
- you have a history of stomach problems, such as heartburn
- you have high blood pressure, heart disease, liver cirrhosis, kidney disease, asthma, or had a stroke
- you are taking a diuretic

Heart attack and stroke warning: NSAIDs, except aspirin, increase the risk of heart attack, heart failure, and stroke. These risks are higher if you use more than directed or for longer than directed.

Do not use:

- with any other drug containing acetaminophen (prescription or nonprescription), if you are not sure whether a drug contains acetaminophen, ask a doctor or pharmacist
- if you have ever had an allergic reaction to acetaminophen or any other pain reliever
- right before or after heart surgery

Ask a doctor before use if:

- right before or after heart surgery
- you have liver disease
- stomach bleeding warning applies to you
- you have problems or serious side effects from taking pain relievers
- you have a history of stomach problems, such as heartburn
- you have high blood pressure, heart disease, liver cirrhosis, kidney disease, asthma, or had a stroke
- you are taking a diuretic

Heart attack and stroke warning: NSAIDs, except aspirin, increase the risk of heart attack, heart failure, and stroke. These risks are higher if you use more than directed or for longer than directed.

Do not use:

- with any other drug containing acetaminophen (prescription or nonprescription), if you are not sure whether a drug contains acetaminophen, ask a doctor or pharmacist
- if you have ever had an allergic reaction to acetaminophen or any other pain reliever
- right before or after heart surgery

Ask a doctor before use if:

- right before or after heart surgery
- you have liver disease
- stomach bleeding warning applies to you
- you have problems or serious side effects from taking pain relievers
- you have a history of stomach problems, such as heartburn
- you have high blood pressure, heart disease, liver cirrhosis, kidney disease, asthma, or had a stroke
- you are taking a diuretic

READ AND KEEP CARTON FOR COMPLETE WARNINGS AND INFORMATION.

Do not use with other medicines containing ACETAMINOPHEN, can cause liver damage.

Drug Facts (continued)

Active ingredients (in each caplet)

Acetaminophen 250 mg Pain reliever

Ibuprofen 125 mg (NSAID) Pain reliever

Purposes

Temporarily relieves minor aches and pains due to:

- backache
- muscular aches
- minor pain
- toothache
- headache
- menstrual cramps

Warnings

Acetaminophen liver damage warning: This product contains acetaminophen. Severe liver damage may occur if you take:

- 3 or more alcoholic drinks every day while using this product
- more than 6 caplets in 24 hours, which is the maximum daily amount for this product
- with other drugs containing acetaminophen

Acetaminophen allergy alert: many cause severe skin reactions. Symptoms may include:

- skin redness
- hives
- swelling
- skin rash
- itching
- stomach pain
- stomach pain that lasts more than 10 days
- redness or swelling is present in the painful area
- any new symptoms appear

NSAID allergy alert: ibuprofen may cause a severe allergic reaction, especially in people allergic to aspirin. Symptoms may include:

- skin redness
- hives
- swelling
- skin rash
- itching
- stomach pain
- stomach pain that lasts more than 10 days
- redness or swelling is present in the painful area
- any new symptoms appear

Do not use:

- with any other drug containing acetaminophen (prescription or nonprescription), if you are not sure whether a drug contains acetaminophen, ask a doctor or pharmacist
- if you have ever had an allergic reaction to acetaminophen or any other pain reliever
- right before or after heart surgery

Ask a doctor before use if:

- right before or after heart surgery
- you have liver disease
- stomach bleeding warning applies to you
- you have problems or serious side effects from taking pain relievers
- you have a history of stomach problems, such as heartburn
- you have high blood pressure, heart disease, liver cirrhosis, kidney disease, asthma, or had a stroke
- you are taking a diuretic

Heart attack and stroke warning: NSAIDs, except aspirin, increase the risk of heart attack, heart failure, and stroke. These risks are higher if you use more than directed or for longer than directed.

Do not use:

- with any other drug containing acetaminophen (prescription or nonprescription), if you are not sure whether a drug contains acetaminophen, ask a doctor or pharmacist
- if you have ever had an allergic reaction to acetaminophen or any other pain reliever
- right before or after heart surgery

Ask a doctor before use if:

- right before or after heart surgery
- you have liver disease
- stomach bleeding warning applies to you
- you have problems or serious side effects from taking pain relievers
- you have a history of stomach problems, such as heartburn
- you have high blood pressure, heart disease, liver cirrhosis, kidney disease, asthma, or had a stroke
- you are taking a diuretic

Heart attack and stroke warning: NSAIDs, except aspirin, increase the risk of heart attack, heart failure, and stroke. These risks are higher if you use more than directed or for longer than directed.

Do not use:

- with any other drug containing acetaminophen (prescription or nonprescription), if you are not sure whether a drug contains acetaminophen, ask a doctor or pharmacist
- if you have ever had an allergic reaction to acetaminophen or any other pain reliever
- right before or after heart surgery

Ask a doctor before use if:

- right before or after heart surgery
- you have liver disease
- stomach bleeding warning applies to you
- you have problems or serious side effects from taking pain relievers
- you have a history of stomach problems, such as heartburn
- you have high blood pressure, heart disease, liver cirrhosis, kidney disease, asthma, or had a stroke
- you are taking a diuretic

Drug Facts (continued)

Inactive ingredients: carnauba wax, colloidal silicon dioxide, croscarmellose sodium, ferric oxide, glyceryl dibehenate, hypromellose, pharmaceutical ink, polydextrose, polyethylene glycol, pregelatinized starch, titanium dioxide

Questions or comments? call weekdays 9 AM to 5 PM at 1-800-84-ADVIL

000065288

100% For Position Only

3 0573 0145 89 3

PRINTED AREA
FOR DATE & LOT
LASER CODING
(COATED)

000065288

DRUG FACTS TEXT DEFINED	TYPE SIZE
• DRUG FACTS TITLE	9 pt
• DRUG FACTS CONTINUED	8 pt
• HEADINGS	8 pt
• SUBHEADINGS/BODY TEXT	6 pt
• LEADING	6.5 pt
• # OF CHARACTERS PER INCH	<39
• BULLETS	5 pt
• SPACE BEFORE BULLET	2 ems
• BARLINES, HAIRLINES	1.5 pt, .5 pt
• SPACE BETWEEN HAIRLINES AND BOX END	2 spaces

CONTAINS 2 MEDICINES

Advil
DUAL ACTION
 WITH **Acetaminophen**
BACK PAIN

Acetaminophen 250 mg and
 Ibuprofen (NSAID) 125 mg Tablets
 Pain Reliever

144
 Caplets

Advil III

Do Not Use if seal under bottle cap imprinted with "SEALED for YOUR PROTECTION" is broken or missing.

Uses: temporarily relieves minor aches and pains due to: ■ backache ■ muscular aches ■ minor pain of arthritis ■ headache ■ toothache ■ menstrual cramps

Warnings
Acetaminophen liver damage warning: This product contains acetaminophen. Severe liver damage may occur if you take ■ with other drugs containing acetaminophen ■ more than 6 caplets in 24 hours, which is the maximum daily amount for this product ■ 3 or more alcoholic drinks every day while using this product.

Acetaminophen allergy alert: may cause severe skin reactions. Symptoms may include: skin reddening, blisters, and rash. If skin reaction occurs, stop use and seek medical help right away.

NSAID allergy alert: ibuprofen may cause a severe allergic reaction, especially in people allergic to aspirin. Symptoms may include: hives, facial swelling, asthma (wheezing), shock, skin reddening, rash, blisters. If an allergic reaction occurs, stop use and seek medical help right away.

Do not use this product if you have ever had an allergic reaction to any pain reliever; with any drug containing acetaminophen (prescription or nonprescription), if you are not sure whether a drug contains acetaminophen, ask a doctor or pharmacist; or right before or after surgery.

NSAID stomach bleeding warning: This product contains an NSAID, which may cause severe stomach bleeding. The chance is higher if you ■ are age 60 or older ■ have had stomach ulcers or bleeding problems ■ take a blood thinning (anticoagulant) or steroid drug ■ take other drugs containing prescription or nonprescription NSAIDs (aspirin, ibuprofen, naproxen, or others) ■ have 3 or more alcoholic drinks every day while using this product ■ take more or for a longer time than directed.

Heart attack and stroke warning: NSAIDs, except aspirin, increase the risk of heart attack, heart failure, and stroke. These can be fatal. The risk is higher if you use more than directed or for longer than directed.

Ask a doctor before use if you are pregnant or breast feeding; you have liver disease; stomach bleeding warning applies to you; you have problems or serious side effects from taking pain relievers; you have a history of stomach problems, such as heartburn; you have high blood pressure, heart disease, liver cirrhosis, kidney disease, asthma, or had a stroke; you are taking a diuretic.

Ask your doctor or pharmacist before use if you are under a doctor's care for any serious condition; taking aspirin for heart attack or stroke, because ibuprofen may decrease this benefit of aspirin; or taking any other drug.

When using this product take with food or milk if stomach upset occurs.

Stop use and ask a doctor if pain gets worse or lasts more than 10 days; redness or swelling is present in the painful area; or any new symptoms appear.

Directions
 ■ do not take more than directed

adults and children 12 years and over	■ take 2 caplets every 6 hours while symptoms persist
children under 12 years	■ ask a doctor

000065289

Questions or comments? 1-800-88-ADWIL
 Dist. by: GSK CH, Warren, NJ 07059
 Trademarks owned or licensed by GSK. ©2021 GSK or licensor
 For most recent product information, visit www.Advil.com

READ AND KEEP CARTON FOR COMPLETE WARNINGS AND INFORMATION

UNVARNISHED AND PRINTED IN BLACK OR DARK BLUE FOR LOT & EXPIRATION AREA.

000065289

MODIFIED DRUG FACTS TEXT DEFINED	TYPE SIZE
• HEADINGS	4.5 pt
• SUBHEADINGS/BODY TEXT	4.5 pt
• LEADING	5 pt
• BULLETS	3.5 pt
• SPACE BEFORE BULLET	2 ems
• BARLINES, HAIRLINES	.5 pt

This is a representation of an electronic record that was signed electronically. Following this are manifestations of any and all electronic signatures for this electronic record.

/s/

NUSHIN F TODD
01/10/2022 11:49:36 AM