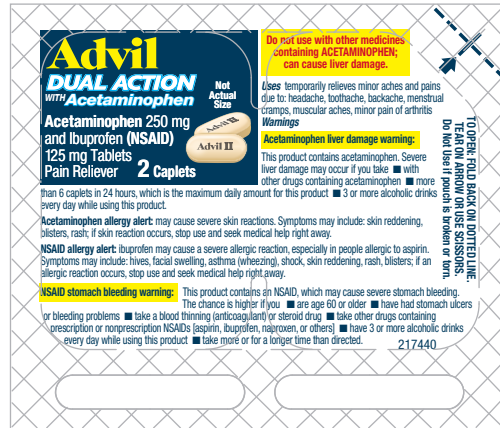
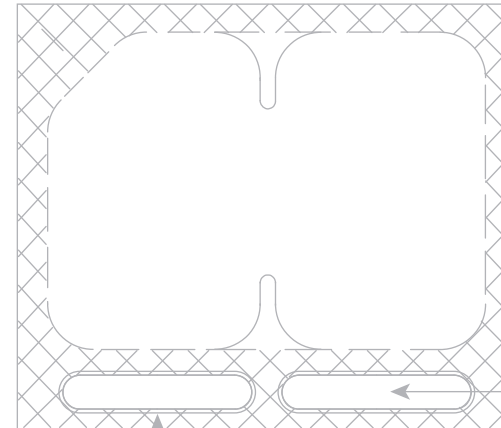


FRONT



BACK



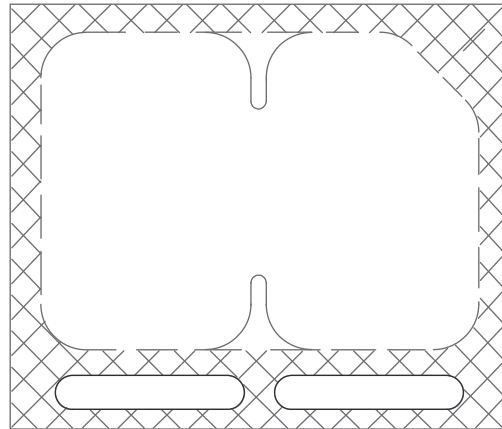
AREA FOR LOT AND EXP
TO BE PRINTED IN DARK COLOR
26 mm x 5.5 mm

SEAL AREA FOR LOT & EXP
25 mm x 4.5 mm

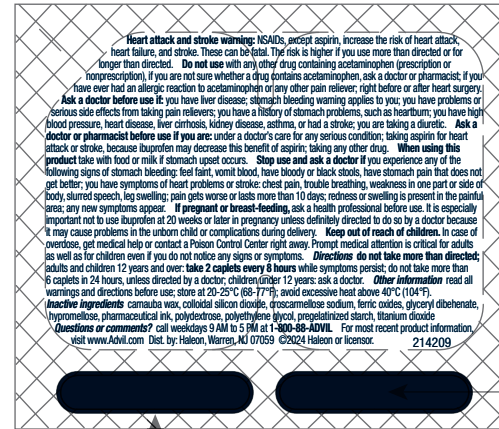
217440
REGULATORY LEGEND

	Actual Size
DRUG FACTS TITLE	N/A
DRUG FACTS CONTINUED	N/A
HEADINGS	4.5 pt
SUBHEADINGS/BODY TEXT	4.5 pt
LEADING	4.5 pt
# OF CHARACTERS PER INCH	<39
BULLETS	4 pt
SPACE BEFORE BULLET	2 ems
BARLINES, HAIRLINES	N/A
SPACE BETWEEN HAIRLINES AND BOX END	N/A
STATEMENT OF IDENTITY (WHAT IT IS) Vertical	N/A
STATEMENT OF IDENTITY (WHAT IT IS) Horizontal	6.25 pt

FRONT



BACK



AREA FOR LOT AND EXP
TO BE PRINTED IN DARK COLOR
26 mm x 5.5 mm

SEAL AREA FOR LOT & EXP
25 mm x 4.5 mm

Heart attack and stroke warning: NSAIDs, except aspirin, increase the risk of heart attack, heart failure, and stroke. These can be fatal. The risk is higher if you use more than directed or for longer than directed. **Do not use** with any other drug containing acetaminophen (prescription or nonprescription). If you are not sure whether a drug contains acetaminophen, ask a doctor or pharmacist. If you have ever had an allergic reaction to acetaminophen or any other pain reliever, right before or after heart surgery; **Ask a doctor before use if:** you have liver disease; stomach bleeding warning applies to you; you have problems or serious side effects from taking pain relievers; you have a history of stomach problems, such as heartburn; you have high blood pressure, heart disease, liver cirrhosis, kidney disease, asthma, or had a stroke; you are taking a diuretic. **Ask a doctor or pharmacist before use if you are:** under a doctor's care for any serious condition; taking aspirin for heart attack or stroke, because ibuprofen may decrease this benefit of aspirin; taking any other drug. **When using this product take with food or milk if stomach upset occurs. Stop use and ask a doctor if you experience any of the following signs of stomach bleeding:** feel faint, vomit blood, have bloody or black stools, have stomach pain that does not get better; you have symptoms of heart problems or stroke: chest pain, trouble breathing, weakness in one part or side of body, slurred speech, leg swelling; pain gets worse or lasts more than 10 days; redness or swelling is present in the painful area; any new symptoms appear. **If pregnant or breast-feeding,** ask a health professional before use. It is especially important not to use ibuprofen at 20 weeks or later in pregnancy unless definitely directed to do so by a doctor because it may cause problems in the unborn child or complications during delivery. **Keep out of reach of children.** In case of overdose, get medical help or contact a Poison Control Center right away. Prompt medical attention is critical for adults, as well as for children even if you do not notice any signs or symptoms. **Directions do not take more than directed;** adults and children 12 years and over: **take 2 capsules every 8 hours** while symptoms persist; do not take more than 16 capsules in 24 hours, unless directed by a doctor; children under 12 years: ask a doctor. **Other information:** read all warnings and directions before use; store at 20-25°C (68-77°F); avoid excessive heat above 40°C (104°F).
Inactive ingredients: camellia wax, colloidal silicon dioxide, croscarmellose sodium, ferric oxides, glyceryl dibehenate, hypromellose, pharmaceutical ink, polydextrose, polyethylene glycol, pregelatinized starch, titanium dioxide
Questions or comments? call weekdays 9 AM to 5 PM at 1-800-48-ADVIL. For most recent product information, visit www.Advii.com. Dist. by: Haleon, Warren, NJ 07059 ©2024 Haleon or licensor. 214209

214209

MODIFIED DRUG FACTS TEXT DEFINED	TYPE SIZE
• HEADINGS	4.5 pt
• SUBHEADINGS/BODY TEXT	4.5 pt
• LEADING	4.5 pt

Advil
DUAL ACTION
WITH **Acetaminophen** Not Actual Size
Acetaminophen 250 mg and Ibuprofen (NSAID) 125 mg Tablets Pain Reliever 2 Caplets

Do not use with other medicines containing ACETAMINOPHEN; can cause liver damage.

Uses temporarily relieves minor aches and pains due to: headache, toothache, backache, menstrual cramps, muscular aches, minor pain of arthritis

Acetaminophen liver damage warning:
This product contains acetaminophen. Severe liver damage may occur if you take
 ■ with other drugs containing acetaminophen
 ■ more than 6 caplets in 24 hours, which is the maximum daily amount for this product.
 ■ 3 or more alcoholic drinks every day while using this product.

Acetaminophen allergy alert: may cause severe skin reactions. Symptoms may include: skin reddening, blisters, rash; if skin reaction occurs, stop use and seek medical help right away.

NSAID allergy alert: ibuprofen may cause a severe allergic reaction, especially in people allergic to aspirin. Symptoms may include: hives, facial swelling, asthma (wheezing), shock, skin reddening, rash, blisters; if an allergic reaction occurs, stop use and seek medical help right away.

NSAID stomach bleeding warning: This product contains an NSAID, which may cause severe stomach bleeding. The chance is higher if you
 ■ are age 60 or older
 ■ have had stomach ulcers or bleeding problems
 ■ take a blood thinning (anticoagulant) or steroid drug
 ■ take other drugs containing prescription or nonprescription NSAIDs (aspirin, ibuprofen, naproxen, or others)
 ■ have 3 or more alcoholic drinks every day while using this product
 ■ take more or for a longer time than directed.

TO OPEN FLUID BACK ON DOTTED LINE, TEAR ON ARROW
ONCE OPENED, DO NOT RESEAL

Heart attack and stroke warning: NSAIDs, except aspirin, increase the risk of heart attack, heart failure, and stroke. These can be fatal. The risk is higher if you use more than directed or for longer than directed. Do not use with any other drug containing acetaminophen (prescription or nonprescription). If you are not sure whether a drug contains acetaminophen, ask a doctor or pharmacist; if you have ever had an allergic reaction to acetaminophen or any other pain reliever, right before or after heart surgery. Ask a doctor before use if: you have liver disease; stomach bleeding warning applies to you; you have problems or serious side effects from taking pain relievers; you have a history of stomach problems, such as heartburn; you have high blood pressure, heart disease, liver cirrhosis, kidney disease, asthma, or had a stroke; you are taking a diuretic. Ask a doctor or pharmacist before use if you are: under a doctor's care for any serious condition; taking aspirin for heart attack or stroke, because ibuprofen may decrease this benefit of aspirin; taking any other drug. When using this product take with food or milk if stomach upset occurs. Stop use and ask a doctor if you experience any of the following signs of stomach bleeding: feel faint, vomit blood, have bloody or black stools, have stomach pain that does not get better; you have symptoms of heart problems or stroke: chest pain, trouble breathing, weakness in one part or side of body, slurred speech, leg swelling; pain gets worse or lasts more than 10 days; redness or swelling is present in the painful area; any new symptoms appear. If pregnant or breast-feeding, ask a health professional before use. It is especially important not to use ibuprofen at 20 weeks or later in pregnancy unless definitely directed to do so by a doctor because it may cause problems in the unborn child or complications during delivery. Keep out of reach of children. In case of overdose, get medical help or contact a Poison Control Center right away. Prompt medical attention is critical for adults as well as for children even if you do not notice any signs or symptoms. Directions do not take more than directed; adults and children 12 years and over: take 2 caplets every 8 hours while symptoms persist; do not take more than 6 caplets in 24 hours, unless directed by a doctor; children under 12 years: ask a doctor. Other information read all warnings and directions before use; store at 20-25°C (68-77°F); avoid excessive heat above 40°C (104°F). Inactive ingredients: carnuba wax, colloidal silicon dioxide, croscarmellose sodium, ferric oxides, glyceryl dibehenate, hypromellose, pharmaceutical ink, polydextrose, polyethylene glycol, pregelatinized starch, titanium dioxide. Questions or comments? call weekdays 9 AM to 5 PM at 1-800-86-ADVIL. For most recent product information, visit www.Advil.com. Dist. by: Helsco, Warren, NJ 07069. Trademarks owned or licensed by Helsco. ©2025 Helsco or licensor.

217441

REPEAT TEXT FOR PRINTING

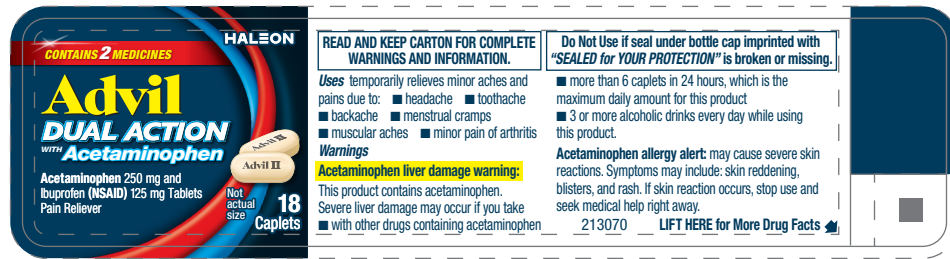
BACK

LASER ENCODING AREA FOR LOT AND EXPIRATION INFORMATION. PRINTED IN ONE SOLID COLOR, BLACK OR DARK BLUE.

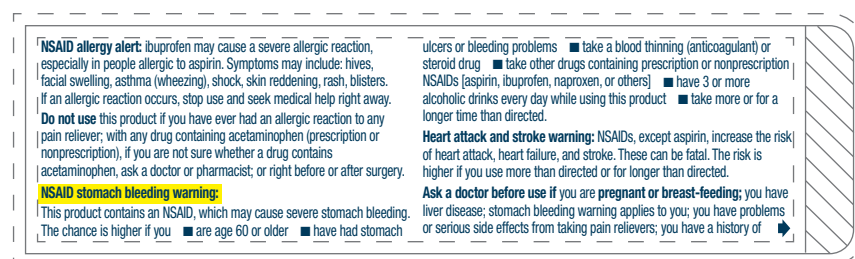
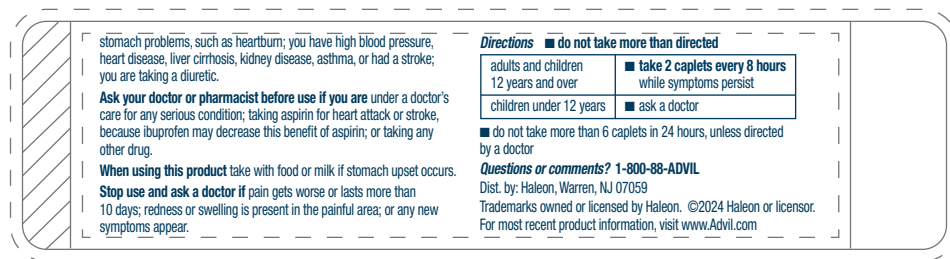
BACK

217441
REGULATORY LEGEND

	Actual Size
DRUG FACTS TITLE	N/A
DRUG FACTS CONTINUED	N/A
HEADINGS	4.5 pt
SUBHEADINGS/BODY TEXT	4.5 pt
LEADING	4.5 pt
# OF CHARACTERS PER INCH	N/A
BULLETS	4 pt
SPACE BEFORE BULLET	N/A
BARLINES, HAIRLINES	N/A
SPACE BETWEEN HAIRLINES AND BOX END	N/A
STATEMENT OF IDENTITY (WHAT IT IS) Vertical	N/A
STATEMENT OF IDENTITY (WHAT IT IS) Horizontal	6.25 pt

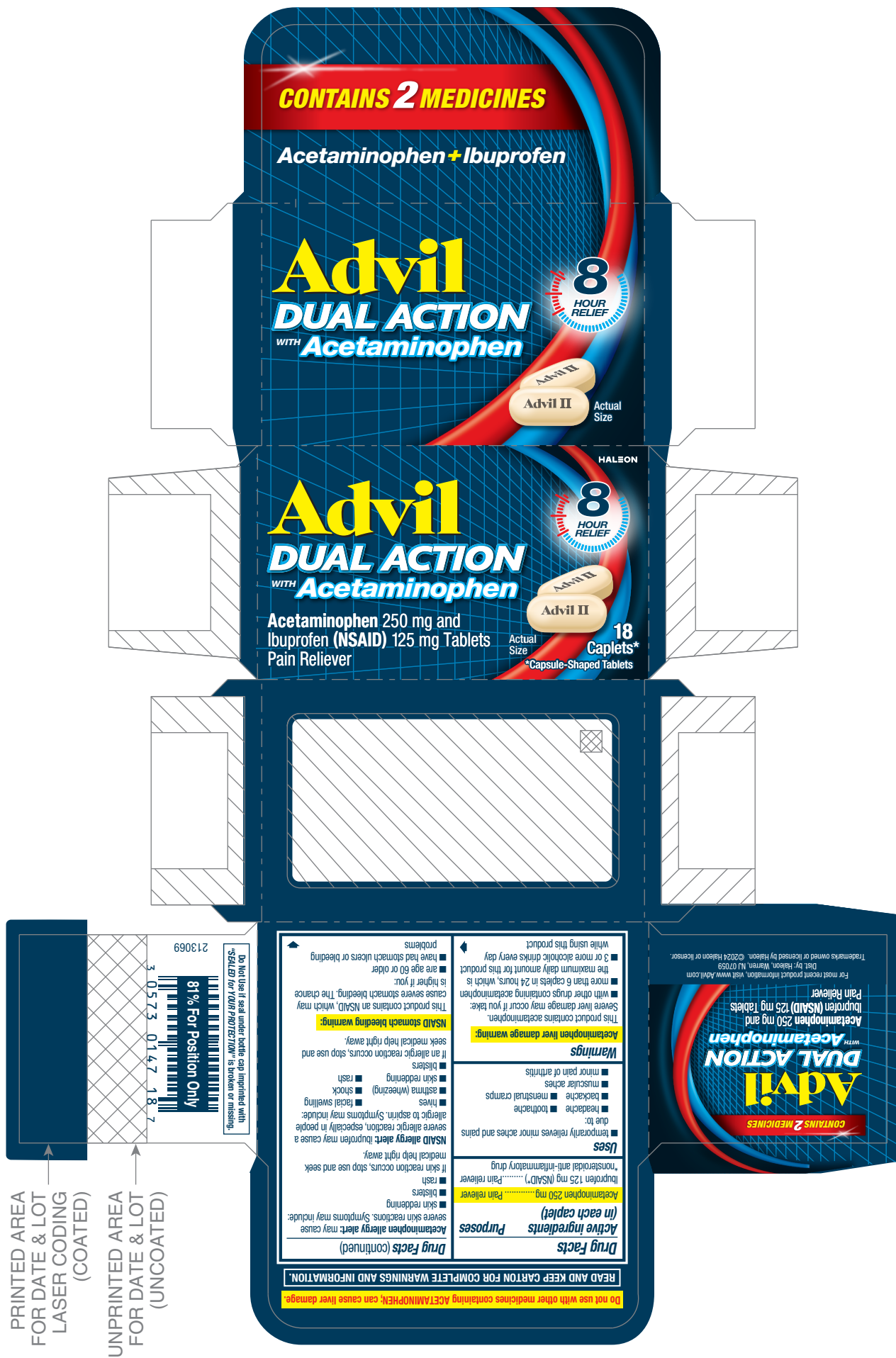


FOR LOT & EXPIRATION AREA, UNVARNISHED AND PRINTED IN BLACK OR DARK BLUE.



213070

REGULATORY LEGEND	Actual Size
HEADINGS	6 pt
SUBHEADINGS/BODY TEXT	6 pt
LEADING	6.5 pt
# OF CHARACTERS PER INCH	<39
BULLETS	5 pt
SPACE BEFORE BULLET	2 ems
BARLINES, HAIRLINES	.5 pt
STATEMENT OF IDENTITY (WHAT IT IS) Horizontal	5.3 pt



Do Not Use if seal under bubble cap is impaired with
 BUBBLE CAP SEAL IMPAIRED as shown in message.
 213069
 81% For Position Only
 3 0573 0147 187

PRINTED AREA
 FOR DATE & LOT
 LASER CODING
 (COATED)

UNPRINTED AREA
 FOR DATE & LOT
 (UNCOATED)

Do not use with other medicines containing ACETAMINOPHEN can cause liver damage.

READ AND KEEP CARTON FOR COMPLETE WARNINGS AND INFORMATION.

Drug Facts (continued)
 Acetaminophen allergy alert: may cause severe skin reactions. Symptoms may include:
 ■ skin redness ■ skin peeling ■ blisters

Active Ingredients (in each caplet)
 Acetaminophen 250 mg Pain Reliever
 Ibuprofen 125 mg (NSAID) Pain Reliever
 *nonsteroidal anti-inflammatory drug

Uses
 ■ temporarily relieves minor aches and pains due to:
 ■ headache ■ toothache
 ■ backache ■ menstrual cramps
 ■ muscular aches
 ■ minor pain of arthritis

Warnings
 This product contains acetaminophen. Severe liver damage may occur if you take:
 ■ with other drugs containing acetaminophen
 ■ more than 6 caplets in 24 hours, which is the maximum daily amount for this product
 ■ 3 or more alcoholic drinks every day while using this product

Acetaminophen liver damage warning:
 This product contains acetaminophen. Severe liver damage may occur if you take:
 ■ with other drugs containing acetaminophen
 ■ more than 6 caplets in 24 hours, which is the maximum daily amount for this product
 ■ 3 or more alcoholic drinks every day while using this product

NSAID stomach bleeding warning:
 This product contains an NSAID, which may cause severe stomach bleeding. The chance is higher if you:
 ■ are age 60 or older
 ■ have had stomach ulcers or bleeding problems

NSAID allergy alert: Ibuprofen may cause a severe allergic reaction, especially in people allergic to aspirin. Symptoms may include:
 ■ facial swelling ■ hives ■ asthma (wheezing) ■ shock ■ skin redness ■ rash

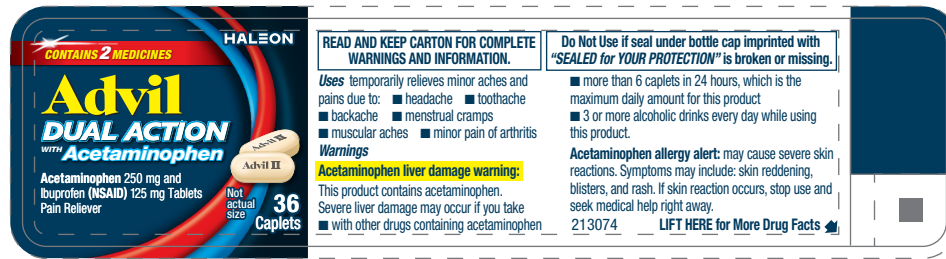
Warnings
 If an allergic reaction occurs, stop use and seek medical help right away.
 ■ blisters
 ■ skin redness ■ rash
 ■ asthma (wheezing) ■ shock ■ facial swelling ■ hives

NSAID stomach bleeding warning:
 This product contains an NSAID, which may cause severe stomach bleeding. The chance is higher if you:
 ■ are age 60 or older
 ■ have had stomach ulcers or bleeding problems

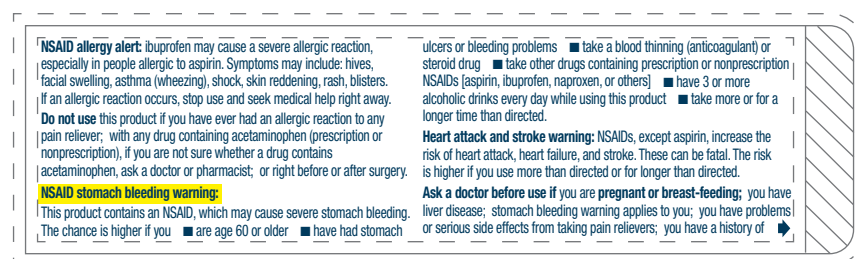
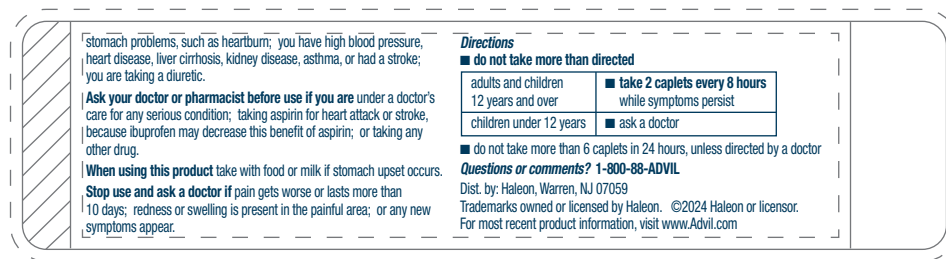
Advil DUAL ACTION
 WITH Acetaminophen
 CONTAINS 2 MEDICINES
 Acetaminophen 250 mg and Ibuprofen (NSAID) 125 mg Tablets Pain Reliever

For most recent product information, visit www.Advil.com
 List by Hialeah, FL 33150
 Trademarks owned or licensed by Hialeah. ©2024 Hialeah or licensee.

REGULATORY LEGEND	Actual Size
DRUG FACTS TITLE	9 pt
DRUG FACTS CONTINUED	8 pt
HEADINGS	8 pt
SUBHEADINGS/BODY TEXT	6 pt
LEADING	6.5 pt
# OF CHARACTERS PER INCH	<39
BULLETS	5 pt
SPACE BEFORE BULLET	2 ems
BARLINES, HAIRLINES	1.5 pt, .5 pt
SPACE BETWEEN HAIRLINES AND BOX END	2 spaces
STATEMENT OF IDENTITY (WHAT IT IS) Vertical	
STATEMENT OF IDENTITY (WHAT IT IS) Horizontal	10.25 pt



FOR LOT & EXPIRATION AREA, UNVARNISHED AND PRINTED IN BLACK OR DARK BLUE.



213074

REGULATORY LEGEND	
	Actual Size
HEADINGS	6 pt
SUBHEADINGS/BODY TEXT	6 pt
LEADING	6.5 pt
# OF CHARACTERS PER INCH	<39
BULLETS	5 pt
SPACE BEFORE BULLET	2 ems
BARLINES, HAIRLINES	.5 pt
STATEMENT OF IDENTITY (WHAT IT IS) Horizontal	5.3 pt



213073

DRUG FACTS TEXT DEFINED	TYPE SIZE
• DRUG FACTS TITLE	9 pt
• DRUG FACTS CONTINUED	8 pt
• HEADINGS	8 pt
• SUBHEADINGS/BODY TEXT	6 pt
• LEADING	6.5 pt
• # OF CHARACTERS PER INCH	<39
• BULLETS	5 pt
• SPACE BEFORE BULLET	2 ems
• BARLINES, HAIRLINES	1.5 pt, .5 pt
• SPACE BETWEEN HAIRLINES AND BOX END	2 spaces



UNVARNISHED AND PRINTED IN BLACK OR DARK BLUE FOR LOT & EXPIRATION AREA.

213349

REGULATORY LEGEND	
	Actual Size
HEADINGS	4.5 pt
SUBHEADINGS/BODY TEXT	4.5 pt
LEADING	4.95 pt
# OF CHARACTERS PER INCH	<39
BULLETS	3.5 pt
SPACE BEFORE BULLET	2 ems
BARLINES, HAIRLINES	.5 pt
STATEMENT OF IDENTITY (WHAT IT IS) Horizontal	7.252 pt



PRINTED AREA FOR DATE & LOT LASER CODING (COATED)

UNPRINTED AREA FOR DATE & LOT (UNCOATED)

Do not use with other medicines containing ACETAMINOPHEN; can cause liver damage.

READ AND KEEP CARTON FOR COMPLETE WARNINGS AND INFORMATION.

Drug Facts (continued)

Active Ingredients (in each caplet) **Purposes**
 Acetaminophen 250 mg Pain reliever
 Ibuprofen 125 mg (NSAID) Pain reliever

Uses
 ■ temporarily relieves minor aches and pains due to:
 ■ headache
 ■ toothache
 ■ backache
 ■ menstrual cramps
 ■ muscle aches
 ■ minor pain of arthritis

Warnings
 ■ Acetaminophen liver damage warning:
 This product contains acetaminophen. Severe liver damage may occur if you take:
 ■ more than 6 caplets in 24 hours, which is the maximum daily amount for this product
 ■ 3 or more alcoholic drinks every day while using this product
 ■ Acetaminophen allergy alert: may cause severe skin reactions. Symptoms may include:
 ■ rash
 ■ skin reddening
 ■ hives
 ■ blisters
 ■ If an allergic reaction occurs, stop use and seek medical help right away.
 ■ NSAID stomach bleeding warning:
 This product contains an NSAID, which may cause severe stomach bleeding. The chance is higher if you:
 ■ are age 60 or older
 ■ have had stomach ulcers or bleeding problems
 ■ take a blood thinning (anticoagulant) or steroid drug
 ■ take other drugs containing prescription or nonprescription NSAIDs (aspirin, ibuprofen, naproxen, or others)
 ■ have 3 or more alcoholic drinks every day while using this product
 ■ take more or for a longer time than directed
 ■ Heart attack and stroke warning: NSAIDs, except aspirin, increase the risk of heart attack, heart failure, and stroke. These can be fatal. The risk is higher if you use more than directed or for longer than directed.
 ■ Do not use:
 ■ with any other drug containing acetaminophen (prescription or nonprescription), if you are not sure whether a drug contains acetaminophen, ask a doctor or pharmacist.

Do Not Use if seal under bottle cap imprinted with "SEALED FOR YOUR PROTECTION" is broken or missing.

Advil DUAL ACTION WITH Acetaminophen

CONTAINS 2 MEDICINES

Acetaminophen 250 mg and Ibuprofen (NSAID) 125 mg Tablets Pain Reliever

REGULATORY LEGEND	Actual Size
DRUG FACTS TITLE	9 pt
DRUG FACTS CONTINUED	8 pt
HEADINGS	8 pt
SUBHEADINGS/BODY TEXT	6 pt
LEADING	6.5 pt
# OF CHARACTERS PER INCH	<39
BULLETS	5 pt
SPACE BEFORE BULLET	2 ems
BARLINES, HAIRLINES	1.5 pt, .5 pt
SPACE BETWEEN HAIRLINES AND BOX END	2 spaces
STATEMENT OF IDENTITY (WHAT IT IS) Vertical	
STATEMENT OF IDENTITY (WHAT IT IS) Horizontal	12.75 pt

CONTAINS 2 MEDICINES HALEON

Advil

DUAL ACTION

WITH Acetaminophen

Acetaminophen 250 mg and Ibuprofen (NSAID) 125 mg Tablets

Pain Reliever

Not actual size

Advil II

90 Caplets

READ AND KEEP CARTON FOR COMPLETE WARNINGS AND INFORMATION.

Do Not Use if seal under bottle cap imprinted with "SEALED for YOUR PROTECTION" is broken or missing.

Uses Temporarily relieves minor aches and pains due to: ■ headache ■ toothache ■ backache ■ menstrual cramps ■ muscular aches ■ minor pain of arthritis

Warnings
Acetaminophen liver damage warning: This product contains acetaminophen. Severe liver damage may occur if you take: ■ with other drugs containing acetaminophen ■ more than 6 caplets in 24 hours, which is the maximum daily amount for this product ■ 3 or more alcoholic drinks every day while using this product.
Acetaminophen allergy alert: may cause severe skin reactions. Symptoms may include: skin reddening, blisters, and rash. If skin reaction occurs, stop use and seek medical help right away.
NSAID allergy alert: ibuprofen may cause a severe allergic reaction, especially in people allergic to aspirin. Symptoms may include: hives, facial swelling, asthma (wheezing), shock, skin reddening, rash, blisters. If an allergic reaction occurs, stop use and seek medical help right away.
Do not use this product if you have ever had an allergic reaction to any pain reliever, with any drug containing acetaminophen (prescription or nonprescription), if you are not sure whether a drug contains acetaminophen, ask a doctor or pharmacist, or right before or after surgery.
NSAID stomach bleeding warning: This product contains an NSAID, which may cause severe stomach bleeding. The chance is higher if you: ■ are age 60 or older ■ have had stomach ulcers or bleeding problems ■ take a blood thinning (anticoagulant) or steroid drug ■ take other drugs containing prescription or nonprescription NSAIDs (aspirin, ibuprofen, naproxen, or others) ■ have 3 or more alcoholic drinks every day while using this product ■ take more or for a longer time than directed.
Heart attack and stroke warning: NSAIDs, except aspirin, increase the risk of heart attack, heart failure, and stroke. These can be fatal. The risk is higher if you use more than directed or for longer than directed.

Ask a doctor before use if you are pregnant or breast-feeding; you have liver disease; stomach bleeding warning applies to you; you have problems or serious side effects from taking pain relievers; you have a history of stomach problems, such as heartburn; you have high blood pressure, heart disease, liver cirrhosis, kidney disease, asthma, or had a stroke; you are taking a diuretic.

Ask your doctor or pharmacist before use if you are under a doctor's care for any serious condition; taking aspirin for heart attack or stroke, because ibuprofen may decrease this benefit of aspirin; or taking any other drug.

When using this product take with food or milk if stomach upset occurs.
Stop use and ask a doctor if pain gets worse or lasts more than 10 days; redness or swelling is present in the painful area; or any new symptoms appear.

Directions
 ■ do not take more than directed

213353

adults and children 12 years and over	take 2 caplets every 8 hours while symptoms persist
children under 12 years	ask a doctor

■ do not take more than 6 caplets in 24 hours, unless directed by a doctor

Questions or comments? 1-800-88-ADVIL
 Distributed by: Haleon, Warren, NJ 07059
 Trademarks owned or licensed by Haleon.
 ©2024 Haleon or licensor. For most recent product information, visit www.Advii.com

UNVARNISHED AND PRINTED IN BLACK OR DARK BLUE FOR LOT & EXPIRATION AREA.

213353

MODIFIED DRUG FACTS TEXT DEFINED	TYPE SIZE
• HEADINGS	4.5 pt
• SUBHEADINGS/BODY TEXT	4.5 pt
• LEADING	4.95 pt
• BULLETS	3.5 pt
• SPACE BEFORE BULLET	2 ems
• BARLINES, HAIRLINES	.5 pt



213352

DRUG FACTS TEXT DEFINED	TYPE SIZE
• DRUG FACTS TITLE	9 pt
• DRUG FACTS CONTINUED	8 pt
• HEADINGS	8 pt
• SUBHEADINGS/BODY TEXT	6 pt
• LEADING	6.5 pt
• # OF CHARACTERS PER INCH	<39
• BULLETS	5 pt
• SPACE BEFORE BULLET	2 ems
• BARLINES, HAIRLINES	1.5 pt, .5 pt
• SPACE BETWEEN HAIRLINES AND BOX END	2 spaces



READ AND KEEP CARTON FOR COMPLETE WARNINGS AND INFORMATION.

Do Not Use if seal under bottle cap imprinted with "SEALED for YOUR PROTECTION" is broken or missing.

Uses Temporarily relieves minor aches and pains due to: ■ headache ■ toothache ■ backache ■ menstrual cramps ■ muscular aches ■ minor pain of arthritis

Warnings

Acetaminophen liver damage warning: This product contains acetaminophen. Severe liver damage may occur if you take ■ with other drugs containing acetaminophen ■ more than 6 caplets in 24 hours, which is the maximum daily amount for this product ■ 3 or more alcoholic drinks every day while using this product.

Acetaminophen allergy alert: may cause severe skin reactions. Symptoms may include: skin reddening, blisters, and rash. If skin reaction occurs, stop use and seek medical help right away.

NSAID allergy alert: ibuprofen may cause a severe allergic reaction, especially in people allergic to aspirin. Symptoms may include: hives, facial swelling, asthma (wheezing), shock, skin reddening, rash, blisters. If an allergic reaction occurs, stop use and seek medical help right away.

Do not use this product if you have ever had an allergic reaction to any pain reliever; with any drug containing acetaminophen (prescription or nonprescription), if you are not sure whether a drug contains acetaminophen, ask a doctor or pharmacist; or right before or after surgery.

NSAID stomach bleeding warning: This product contains an NSAID, which may cause severe stomach bleeding. The chance is higher if you ■ are age 60 or older ■ have had stomach ulcers or bleeding problems ■ take a blood thinning (anticoagulant) or steroid drug ■ take other drugs containing prescription or nonprescription NSAIDs (aspirin, ibuprofen, naproxen, or others) ■ have 3 or more alcoholic drinks every day while using this product. ■ take more or for a longer time than directed.

Heart attack and stroke warning: NSAIDs, except aspirin, increase the risk of heart attack, heart failure, and stroke. These can be fatal. The risk is higher if you use more than directed or for longer than directed.

Ask a doctor before use if you are pregnant or breast-feeding; you have liver disease; stomach bleeding warning applies to you; you have problems or serious side effects from taking pain relievers; you have a history of stomach problems, such as heartburn; you have high blood pressure, heart disease, liver cirrhosis, kidney disease, asthma, or had a stroke; you are taking a diuretic.

Ask your doctor or pharmacist before use if you are under a doctor's care for any serious condition; taking aspirin for heart attack or stroke, because ibuprofen may decrease this benefit of aspirin; or taking any other drug.

When using this product take with food or milk if stomach upset occurs.

Stop use and ask a doctor if pain gets worse or lasts more than 10 days; redness or swelling is present in the painful area; or any new symptoms appear.

Directions

■ do not take more than directed

adults and children 12 years and over	■ take 2 caplets every 8 hours while symptoms persist
children under 12 years	■ ask a doctor

■ do not take more than 6 caplets in 24 hours, unless directed by a doctor

Questions or comments? 1-800-88-ADVIL

Dist. by: Haleon, Warren, NJ 07059

Trademarks owned or licensed by Haleon.

©2024 Haleon or licensor.

For most recent product information, visit www.Advil.com

213356



3/16" X 3/16" DATA MATRIX CODE (ECC 200), PRINTED IN BLACK OR DARK BLUE ON UNPRINTED WHITE BACKGROUND.

213356

MODIFIED DRUG FACTS TEXT DEFINED	TYPE SIZE
• HEADINGS	4.5 pt
• SUBHEADINGS/BODY TEXT	4.5 pt
• LEADING	5 pt
• BULLETS	3.5 pt
• SPACE BEFORE BULLET	2 ems
• BARLINES, HAIRLINES	.5 pt



READ AND KEEP CARTON FOR COMPLETE WARNINGS AND INFORMATION.

Do Not Use if seal under bottle cap imprinted with "SEALED for YOUR PROTECTION" is broken or missing.

Uses temporarily relieves minor aches and pains due to: ■ headache ■ toothache ■ backache ■ menstrual cramps ■ muscular aches ■ minor pain of arthritis

Warnings

Acetaminophen liver damage warning: This product contains acetaminophen.

Severe liver damage may occur if you take ■ with other drugs containing acetaminophen ■ more than 6 caplets in 24 hours, which is the maximum daily amount for this product ■ 3 or more alcoholic drinks every day while using this product.

Acetaminophen allergy alert: may cause severe skin reactions. Symptoms may include: skin reddening, blisters, and rash. If skin reaction occurs, stop use and seek medical help right away.

NSAID allergy alert: ibuprofen may cause a severe allergic reaction, especially in people allergic to aspirin. Symptoms may include: hives, facial swelling, asthma (wheezing), shock, skin reddening, rash, blisters. If an allergic reaction occurs, stop use and seek medical help right away.

Do not use this product if you have ever had an allergic reaction to any pain reliever; with any drug containing acetaminophen (prescription or nonprescription), if you are not sure whether a drug contains acetaminophen, ask a doctor or pharmacist; or right before or after surgery.

NSAID stomach bleeding warning: This product contains an NSAID, which may cause severe stomach bleeding. The chance is higher if you ■ are age 60 or older ■ have had stomach ulcers or bleeding problems ■ take a blood thinning (anticoagulant) or steroid drug ■ take other drugs containing prescription or nonprescription NSAIDs (aspirin, ibuprofen, naproxen, or others) ■ have 3 or more alcoholic drinks every day while using this product ■ take more or for a longer time than directed.

Heart attack and stroke warning: NSAIDs, except aspirin, increase the risk of heart attack, heart failure, and stroke. These can be fatal. The risk is higher if you use more than directed or for longer than directed.

Ask a doctor before use if you are pregnant or breast-feeding; you have liver disease; stomach bleeding warning applies to you; you have problems or serious side effects from taking pain relievers; you have a history of stomach problems, such as heartburn; you have high blood pressure, heart disease, liver cirrhosis, kidney disease, asthma, or had a stroke; you are taking a diuretic.

Ask your doctor or pharmacist before use if you are under a doctor's care for any serious condition; taking aspirin for heart attack or stroke, because ibuprofen may decrease this benefit of aspirin; or taking any other drug.

When using this product take with food or milk if stomach upset occurs.

Stop use and ask a doctor if pain gets worse or lasts more than 10 days; redness or swelling is present in the painful area; or any new symptoms appear.

Directions

■ do not take more than directed

adults and children 12 years and over	■ take 2 caplets every 8 hours while symptoms persist
children under 12 years	■ ask a doctor

■ do not take more than 6 caplets in 24 hours, unless directed by a doctor

Questions or comments? 1-800-88-ADVIL

Distributed by: Haleon, Warren, NJ 07059
 Trademarks owned or licensed by Haleon. ©2024 Haleon or licensor.
 For most recent product information, visit www.Advii.com

213351



3/16" X 3/16" DATA MATRIX CODE (ECC 200), PRINTED IN BLACK OR DARK BLUE ON UNPRINTED WHITE BACKGROUND.

MODIFIED DRUG FACTS TEXT DEFINED	TYPE SIZE
• HEADINGS	5 pt
• SUBHEADINGS/BODY TEXT	5 pt
• LEADING	5.5 pt
• BULLETS	4 pt
• SPACE BEFORE BULLET	2 ems
• BARLINES, HAIRLINES	.5 pt



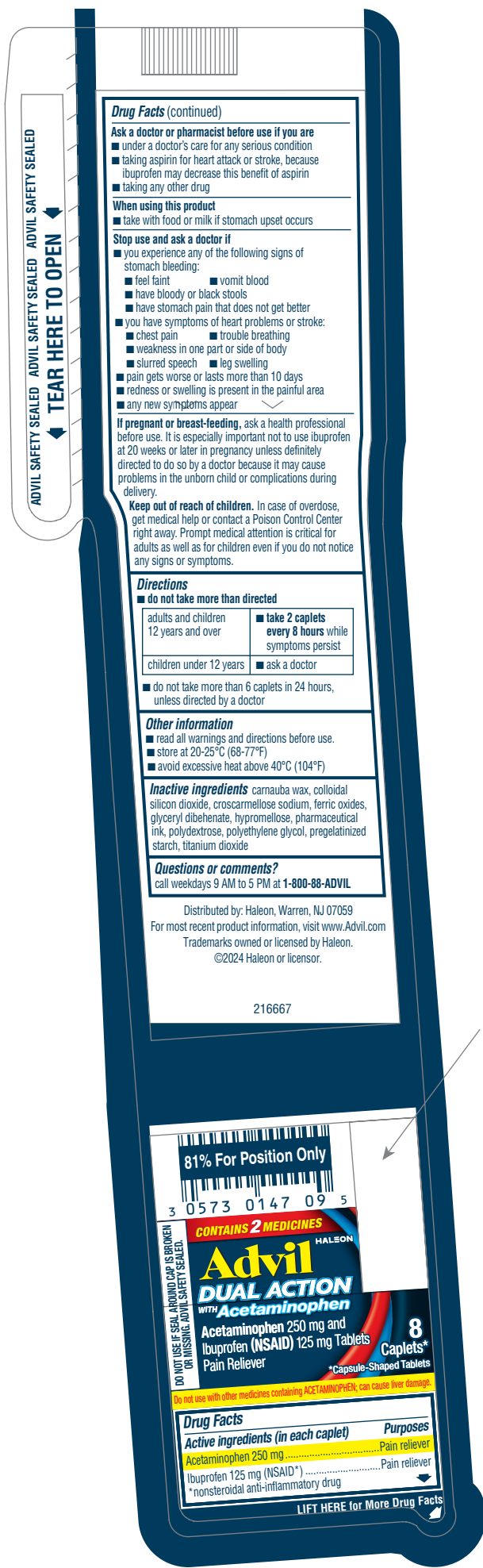
3/16" X 3/16" DATA MATRIX CODE (ECC 200), PRINTED IN BLACK OR DARK BLUE ON UNPRINTED WHITE BACKGROUND WITH A MINIMUM OF 1/8" QUIET ZONE ALL 4 SIDES.

<p>Drug Facts (continued)</p> <p>Warnings</p> <p>Acetaminophen liver damage warning:</p> <p>This product contains acetaminophen. Severe liver damage may occur if you take:</p> <ul style="list-style-type: none"> with other drugs containing acetaminophen more than 6 caplets in 24 hours, which is the maximum daily amount for this product 3 or more alcoholic drinks every day while using this product <p>Acetaminophen allergy alert: may cause severe skin reactions. Symptoms may include:</p> <ul style="list-style-type: none"> skin reddening blisters rash <p>If skin reaction occurs, stop use and seek medical help right away.</p> <p>NSAID allergy alert: ibuprofen may cause a severe allergic reaction, especially in people allergic to aspirin. Symptoms may include:</p> <ul style="list-style-type: none"> hives facial swelling asthma (wheezing) shock skin reddening rash blisters <p>If an allergic reaction occurs, stop use and seek medical help right away.</p> <p>NSAID stomach bleeding warning:</p> <p>This product contains an NSAID, which may cause severe stomach bleeding. The chance is higher if you:</p> <ul style="list-style-type: none"> are age 60 or older have had stomach ulcers or bleeding problems take a blood thinning (anticoagulant) or steroid drug take other drugs containing prescription or nonprescription NSAIDs [aspirin, ibuprofen, naproxen, or others] have 3 or more alcoholic drinks every day while using this product take more or for a longer time than directed 	<p>Drug Facts (continued)</p> <p>Heart attack and stroke warning: NSAIDs, except aspirin, increase the risk of heart attack, heart failure, and stroke. These can be fatal. The risk is higher if you use more than directed or for longer than directed.</p> <p>Do not use</p> <ul style="list-style-type: none"> with any other drug containing acetaminophen (prescription or nonprescription). If you are not sure whether a drug contains acetaminophen, ask a doctor or pharmacist. if you have ever had an allergic reaction to acetaminophen or any other pain reliever right before or after heart surgery <p>Ask a doctor before use if</p> <ul style="list-style-type: none"> you have liver disease stomach bleeding warning applies to you you have problems or serious side effects from taking pain relievers you have a history of stomach problems, such as heartburn you have high blood pressure, heart disease, liver cirrhosis, kidney disease, asthma, or had a stroke you are taking a diuretic <p>Ask a doctor or pharmacist before use if you are</p> <ul style="list-style-type: none"> under a doctor's care for any serious condition taking aspirin for heart attack or stroke, because ibuprofen may decrease this benefit of aspirin taking any other drug <p>When using this product</p> <ul style="list-style-type: none"> take with food or milk if stomach upset occurs
--	---

<p>Drug Facts (continued)</p> <p>Stop use and ask a doctor if</p> <ul style="list-style-type: none"> you experience any of the following signs of stomach bleeding: <ul style="list-style-type: none"> feel faint vomit blood have bloody or black stools have stomach pain that does not get better you have symptoms of heart problems or stroke: <ul style="list-style-type: none"> chest pain trouble breathing weakness in one part or side of body slurred speech leg swelling pain gets worse or lasts more than 10 days redness or swelling is present in the painful area any new symptoms appear <p>If pregnant or breast-feeding, ask a health professional before use. It is especially important not to use ibuprofen at 20 weeks or later in pregnancy unless definitely directed to do so by a doctor because it may cause problems in the unborn child or complications during delivery.</p> <p>Keep out of reach of children. In case of overdose, get medical help or contact a Poison Control Center right away. Prompt medical attention is critical for adults as well as for children even if you do not notice any signs or symptoms.</p>	<p>Drug Facts (continued)</p> <p>Directions</p> <ul style="list-style-type: none"> do not take more than directed <table border="1"> <tr> <td>adults and children 12 years and over</td> <td>take 2 caplets every 8 hours while symptoms persist</td> </tr> <tr> <td>children under 12 years</td> <td>ask a doctor</td> </tr> </table> <ul style="list-style-type: none"> do not take more than 6 caplets in 24 hours, unless directed by a doctor <p>Other information</p> <ul style="list-style-type: none"> read all warnings and directions before use. store at 20-25°C (68-77°F) avoid excessive heat above 40°C (104°F) <p>Inactive ingredients</p> <p>carnauba wax, colloidal silicon dioxide, croscarmellose sodium, ferric oxides, glyceryl dibehenate, hypromellose, pharmaceutical ink, polydextrose, polyethylene glycol, pregelatinized starch, titanium dioxide</p> <p>Questions or comments?</p> <p>call weekdays 9 AM to 5 PM at 1-800-88-ADVIL</p> <p>For most recent product information, visit www.Advil.com Distributed by: Haleon, Warren, NJ 07059 Trademarks are owned by or licensed to the Haleon group of companies. ©2024 Haleon group of companies or its licensor.</p>	adults and children 12 years and over	take 2 caplets every 8 hours while symptoms persist	children under 12 years	ask a doctor
adults and children 12 years and over	take 2 caplets every 8 hours while symptoms persist				
children under 12 years	ask a doctor				

216677

NON MODIFIED DRUG FACTS TEXT DEFINED	TYPE SIZE
• DRUG FACTS TITLE	9 pt
• DRUG FACTS CONTINUED	8 pt
• HEADINGS	8 pt
• SUBHEADINGS/BODY TEXT	6 pt
• LEADING	6.5 pt
• # OF CHARACTERS PER INCH	<39
• BULLETS	5 pt
• SPACE BEFORE BULLET	2 ems
• BARLINES, HAIRLINES	1.5 pt, .5 pt
• SPACE BETWEEN HAIRLINES AND BOX END	2 spaces



ADVIL SAFETY SEALED ADVIL SAFETY SEALED ADVIL SAFETY SEALED
 TEAR HERE TO OPEN

Drug Facts (continued)

Ask a doctor or pharmacist before use if you are

- under a doctor's care for any serious condition
- taking aspirin for heart attack or stroke, because ibuprofen may decrease this benefit of aspirin
- taking any other drug

When using this product

- take with food or milk if stomach upset occurs

Stop use and ask a doctor if

- you experience any of the following signs of stomach bleeding:
 - feel faint
 - have bloody or black stools
 - have stomach pain that does not get better
- you have symptoms of heart problems or stroke:
 - chest pain
 - trouble breathing
 - weakness in one part or side of body
 - slurred speech
 - leg swelling
- pain gets worse or lasts more than 10 days
- redness or swelling is present in the painful area
- any new symptoms appear

If pregnant or breast-feeding, ask a health professional before use. It is especially important not to use ibuprofen at 20 weeks or later in pregnancy unless definitely directed to do so by a doctor because it may cause problems in the unborn child or complications during delivery.

Keep out of reach of children. In case of overdose, get medical help or contact a Poison Control Center right away. Prompt medical attention is critical for adults as well as for children even if you do not notice any signs or symptoms.

Directions

do not take more than directed

adults and children 12 years and over	take 2 caplets every 8 hours while symptoms persist
children under 12 years	ask a doctor

do not take more than 6 caplets in 24 hours, unless directed by a doctor

Other information

- read all warnings and directions before use.
- store at 20-25°C (68-77°F)
- avoid excessive heat above 40°C (104°F)

Inactive ingredients carnauba wax, colloidal silicon dioxide, croscarmellose sodium, ferric oxides, glyceryl dibehenate, hypromellose, pharmaceutical ink, polydextrose, polyethylene glycol, pregelatinized starch, titanium dioxide

Questions or comments?
call weekdays 9 AM to 5 PM at 1-800-88-ADVIL

Distributed by: Haleon, Warren, NJ 07059
For most recent product information, visit www.Advil.com
Trademarks owned or licensed by Haleon.
©2024 Haleon or licensor.

216667

UNVARNISHED AREA FOR LOT & EXP. DATE

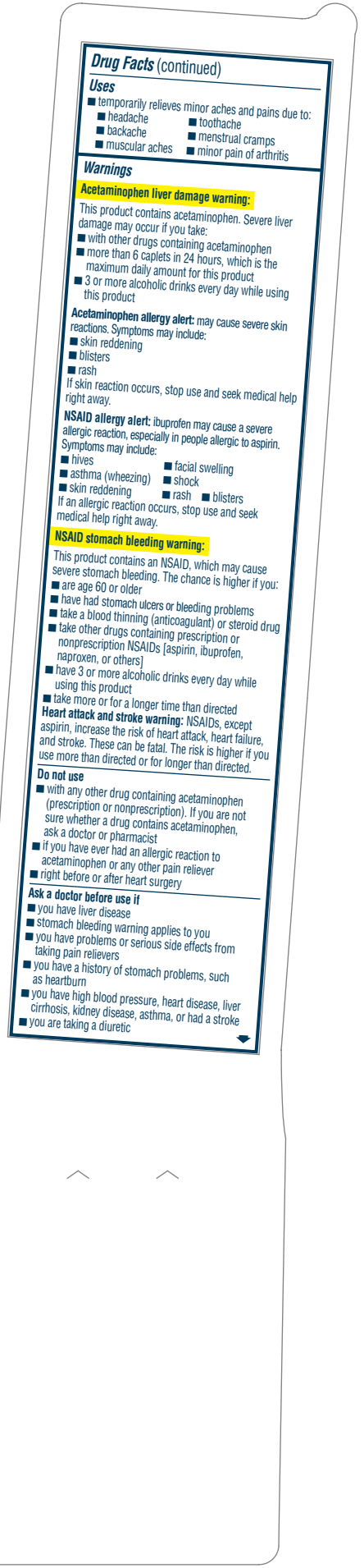


Drug Facts

Active ingredients (in each caplet)	Purposes
Acetaminophen 250 mg	Pain reliever
Ibuprofen 125 mg (NSAID*)	Pain reliever

*nonsteroidal anti-inflammatory drug

LIFT HERE for More Drug Facts



Drug Facts (continued)

Uses

- temporarily relieves minor aches and pains due to:
 - headache
 - backache
 - muscular aches
 - toothache
 - menstrual cramps
 - minor pain of arthritis

Warnings

Acetaminophen liver damage warning:
This product contains acetaminophen. Severe liver damage may occur if you take:

- with other drugs containing acetaminophen
- more than 6 caplets in 24 hours, which is the maximum daily amount for this product
- 3 or more alcoholic drinks every day while using this product

Acetaminophen allergy alert: may cause severe skin reactions. Symptoms may include:

- skin reddening
- blisters
- rash

If skin reaction occurs, stop use and seek medical help right away.

NSAID allergy alert: ibuprofen may cause a severe allergic reaction, especially in people allergic to aspirin. Symptoms may include:

- hives
- asthma (wheezing)
- skin reddening
- facial swelling
- shock
- blisters

If an allergic reaction occurs, stop use and seek medical help right away.

NSAID stomach bleeding warning:

This product contains an NSAID, which may cause severe stomach bleeding. The chance is higher if you:

- are age 60 or older
- have had stomach ulcers or bleeding problems
- take a blood thinning (anticoagulant) or steroid drug
- take other drugs containing prescription or nonprescription NSAIDs (aspirin, ibuprofen, naproxen, or others)
- have 3 or more alcoholic drinks every day while using this product
- take more or for a longer time than directed

Heart attack and stroke warning: NSAIDs, except aspirin, increase the risk of heart attack, heart failure, and stroke. These can be fatal. The risk is higher if you use more than directed or for longer than directed.

Do not use

- with any other drug containing acetaminophen (prescription or nonprescription). If you are not sure whether a drug contains acetaminophen, ask a doctor or pharmacist
- if you have ever had an allergic reaction to acetaminophen or any other pain reliever
- right before or after heart surgery

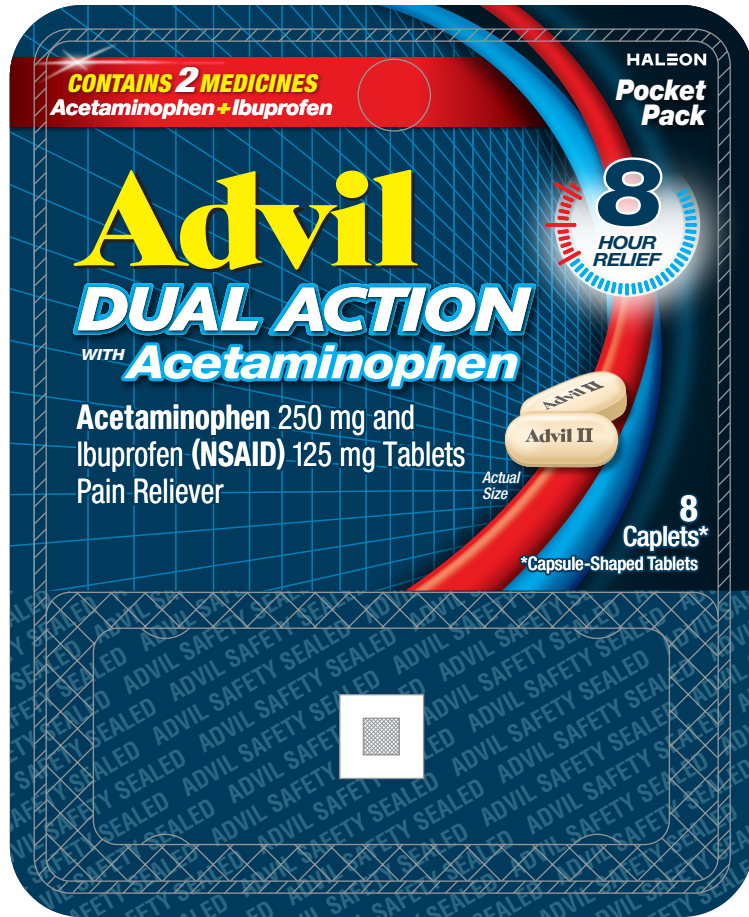
Ask a doctor before use if

- you have liver disease
- stomach bleeding warning applies to you
- you have problems or serious side effects from taking pain relievers
- you have a history of stomach problems, such as heartburn
- you have high blood pressure, heart disease, liver cirrhosis, kidney disease, asthma, or had a stroke
- you are taking a diuretic

216667

REGULATORY LEGEND

	Actual Size
DRUG FACTS TITLE	8 pt
DRUG FACTS CONTINUED	7 pt
HEADINGS	7 pt
SUBHEADINGS/BODY TEXT	6 pt
LEADING	6.5 pt
# OF CHARACTERS PER INCH	<39
BULLETS	5 pt
SPACE BEFORE BULLET	2 ems
BARLINES, HAIRLINES	1.5 pt, .5 pt
SPACE BETWEEN HAIRLINES AND BOX END	2 spaces
STATEMENT OF IDENTITY (WHAT IT IS) Vertical	N/A
STATEMENT OF IDENTITY (WHAT IT IS) Horizontal	7.5 pt, 8 pt



FRONT

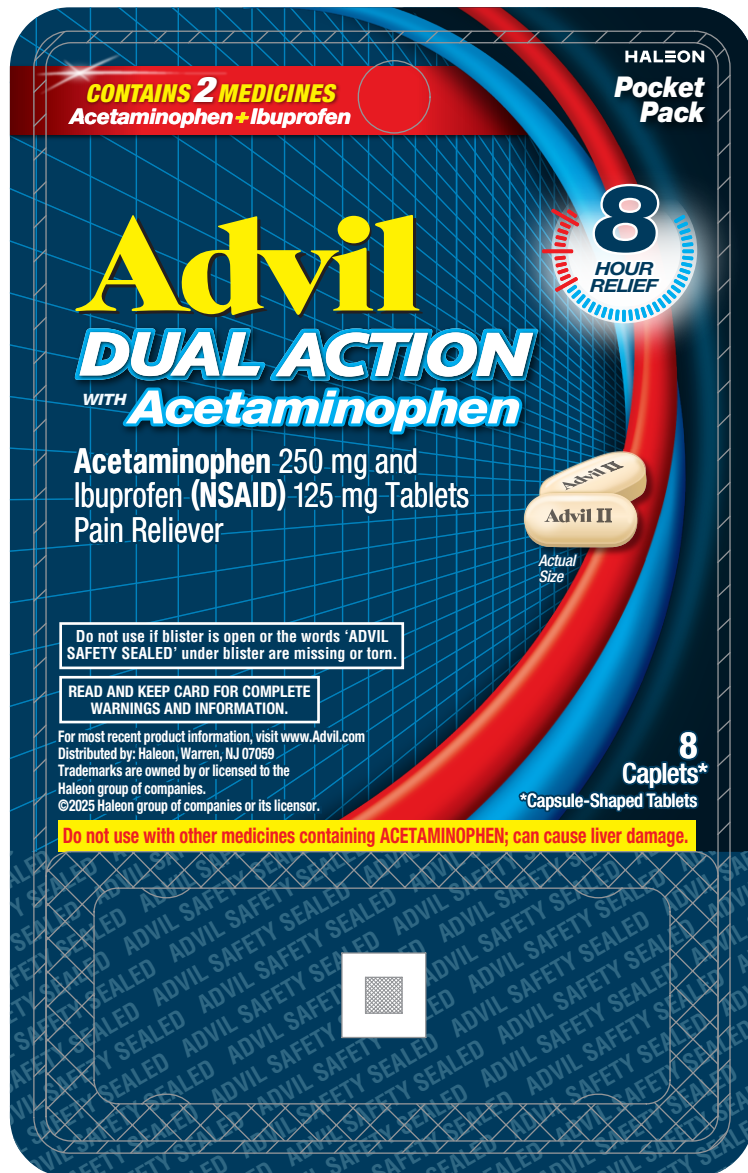


BACK

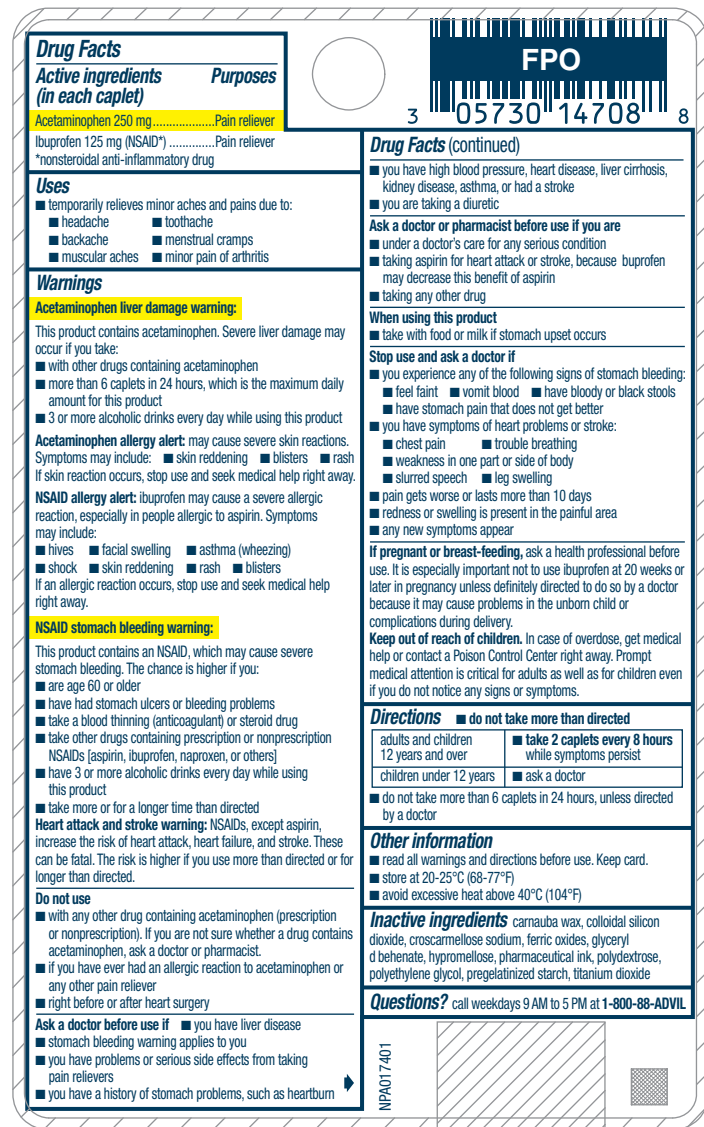
LOT & EXP AREA

NPA017403

DRUG FACTS TEXT DEFINED	TYPE SIZE
• TEXT	6 pt
• LEADING	6.5 pt
• BARLINES, HAIRLINES	.75 pt



FRONT



LOT & EXP AREA

BACK

NPA017401

DRUG FACTS TEXT DEFINED	TYPE SIZE
• DRUG FACTS TITLE	9 pt
• DRUG FACTS CONTINUED	8 pt
• HEADINGS	8 pt
• SUBHEADINGS/BODY TEXT	6 pt
• LEADING	6.5 pt
• # OF CHARACTERS PER INCH	<39
• BULLETS	5 pt
• SPACE BEFORE BULLET	2 ems
• BARLINES, HAIRLINES	1.5 pt, .5 pt
• SPACE BETWEEN HAIRLINES AND BOX END	2 spaces

TOP (BACK)

Warnings

Acetaminophen liver damage warning:
 This product contains acetaminophen. Severe liver damage may occur if you take **more than 6 caplets in 24 hours**, which is the maximum daily amount for this product **or 3 or more alcoholic drinks every day while using this product.**

Acetaminophen allergy alert: may cause severe skin reactions. Symptoms may include: skin reddening, blisters, and rash. If skin reaction occurs, stop use and seek medical help right away.

NSAID allergy alert: ibuprofen may cause a severe allergic reaction, especially in people allergic to aspirin. Symptoms may include: hives, facial swelling, asthma (wheezing), shock, skin reddening, rash, blisters. If an allergic reaction occurs, stop use and seek medical help right away.

Do not use this product if you have ever had an allergic reaction to any pain reliever, with any drug containing acetaminophen (prescription or nonprescription), if you are not sure whether a drug contains acetaminophen, ask a doctor or pharmacist; or right before or after surgery.

NSAID stomach bleeding warning:
 This product contains an NSAID, which may cause severe stomach bleeding. The chance is higher if you **are age 60 or older** **have had stomach ulcers or bleeding problems** **take a blood thinning (anticoagulant) or steroid drug** **take other drugs containing prescription or nonprescription NSAIDs (aspirin, ibuprofen, naproxen, or others)** **have 3 or more alcoholic drinks every day while using this product** **take more or for a longer time than directed.**

BASE

Heart attack and stroke warning: NSAIDs, except aspirin, increase the risk of heart attack, heart failure, and stroke. These can be fatal. The risk is higher if you use more than directed or for longer than directed.

Ask a doctor before use if you are pregnant or breast feeding; you have liver disease; stomach bleeding warning applies to you; you have problems or serious side effects from taking pain relievers; you have a history of stomach problems, such as heartburn; you have high blood pressure, heart disease, liver cirrhosis, kidney disease, asthma, or had a stroke; you are taking a diuretic.

Ask your doctor or pharmacist before use if you are under a doctor's care for any serious condition; taking aspirin for heart attack or stroke, because ibuprofen may decrease this benefit of aspirin; or taking any other drug.

When using this product take with food or milk if stomach upset occurs. **Stop use and ask a doctor if** pain gets worse or lasts more than 10 days; redness or swelling is present in the painful area; or any new symptoms appear.

Directions **do not take more than directed;** adults and children 12 years and over: **take 2 caplets every 8 hours** while symptoms persist; do not take more than 6 caplets in 24 hours, unless directed by a doctor; children under 12 years: ask a doctor.

Questions or comments? 1-800-88-ADVIL

DO NOT USE unless vial was sealed in unbroken plastic blister on cardboard card.

For most recent product information, visit www.Advil.com
 Dist. by: Haleon, Warren, NJ 07059 ©2025 Haleon or licensor.

NPA017862

TOP (FACE)

HALEON

CONTAINS 2 MEDICINES

Advil
DUAL ACTION
 WITH Acetaminophen

Acetaminophen 250 mg and Ibuprofen (NSAID) 125 mg Tablets Pain Reliever

8 HOUR RELIEF

8 Caplets

Not Actual Size

READ AND KEEP CARD FOR COMPLETE WARNINGS AND INFORMATION

Uses
 temporarily relieves minor aches and pains due to:

- headache
- toothache
- backache
- menstrual cramps
- muscular aches
- minor pain of arthritis

OPEN HERE TO VIEW MORE PRODUCT INFORMATION

LOT EXP AREA
 NO VARINISH

NPA017862

	Actual Size
DRUG FACTS TITLE	N/A
DRUG FACTS CONTINUED	N/A
HEADINGS	6 pt
SUBHEADINGS/BODY TEXT	6 pt
LEADING	6.25 pt
# OF CHARACTERS PER INCH	<39
BULLETS	5 pt
SPACE BEFORE BULLET	2 ems
WARNING BOX LINE	.5 pt
SPACE BETWEEN HAIRLINES AND BOX END	2 spaces
STATEMENT OF IDENTITY (WHAT IT IS) Vertical	N/A
STATEMENT OF IDENTITY (WHAT IT IS) Horizontal	N/A



See Full Drug Facts Information on the side and back panels of the dispenser

Home Office Travel

Advil DUAL ACTION 8 HOUR RELIEF WITH Acetaminophen

CONTAINS 2 MEDICINES Acetaminophen + Ibuprofen

POCKET PACK 96 CAPLETS

Drug Facts (continued)

NSAID stomach bleeding warning:
This product contains an NSAID, which may cause severe stomach bleeding. The chance is higher if you:

- are age 60 or older
- have had stomach ulcers or bleeding problems
- take a blood thinning (anticoagulant) or steroid drug
- take other drugs containing prescription or nonprescription NSAIDs (aspirin, ibuprofen, naproxen, or others)
- have 3 or more alcoholic drinks every day while using this product
- take more or for a longer time than directed

Heart attack and stroke warning: NSAIDs, except aspirin, increase the risk of heart attack, heart failure, and stroke. These can be fatal. The risk is higher if you use more than directed or for longer than directed.

Do not use

- with any other drug containing acetaminophen (prescription or nonprescription), if you are not sure whether a drug contains acetaminophen, ask a doctor or pharmacist.
- if you have ever had an allergic reaction to acetaminophen or any other pain reliever
- right before or after heart surgery

Ask a doctor before use if

- you have liver disease
- stomach bleeding warning applies to you
- you have problems or serious side effects from taking pain relievers
- you have a history of stomach problems, such as heartburn
- you have high blood pressure, heart disease, liver cirrhosis, kidney disease, asthma, or had a stroke
- you are taking a diuretic

Ask a doctor or pharmacist before use if you are

- under a doctor's care for any serious condition
- taking aspirin for heart attack or stroke, because ibuprofen may decrease this

Drug Facts (continued)

benefit of aspirin

- taking any other drug

When using this product

- take with food or milk if stomach upset occurs

Stop use and ask a doctor if

- you experience any of the following signs of stomach bleeding:
 - feel faint
 - vomit blood
 - have bloody or black stools
 - have stomach pain that does not get better

Drug Facts (continued)

- you have symptoms of heart problems or stroke:
 - chest pain
 - trouble breathing
 - weakness in one part or side of body
 - slurred speech
 - leg swelling
 - pain gets worse or lasts more than 10 days
 - redness or swelling is present in the painful area
 - any new symptoms appear

Advil DUAL ACTION WITH Acetaminophen

Acetaminophen 250 mg and ibuprofen (NSAID) 125 mg Tablets Pain Reliever

8 HOUR RELIEF

Actual size Advil II

96 Caplets* (12 Vials of 8 Caplets Each) *Capsule-Shaped Tablets

Contains: 1 Dozen, 8 Count Pocket Packs

DO NOT USE IF SEAL AROUND GAP IS BROKEN OR MISSING. ADVIL SAFETY SEALED.

For most recent product information, visit www.Advil.com. Distributed by: Haleon, Warren, NJ 07059. Trademarks are owned by or licensed to the Haleon group of companies. ©2025 Haleon group of companies or its licensor.

Drug Facts (continued)

If pregnant or breast-feeding, ask a health professional before use. It is especially important not to use ibuprofen at 20 weeks or later in pregnancy unless definitely directed to do so by a doctor because it may cause problems in the unborn child or complications during delivery. **Keep out of reach of children.** In case of overdose, get medical help or contact a Poison Control Center right away. Prompt medical attention is critical for adults as well as for children even if you do not notice any signs or symptoms.

Directions

- do not take more than directed

Drug Facts (continued)

adults and children 12 years and over

- take 2 caplets every 8 hours while symptoms persist

children under 12 years

- ask a doctor
- do not take more than 6 caplets in 24 hours, unless directed by a doctor

Other information

- read all warnings and directions before use.
- store at 20-25°C (68-77°F)
- avoid excessive heat above 40°C (104°F)

Drug Facts (continued)

Inactive ingredients

carnauba wax, colloidal silicon dioxide, croscarmellose sodium, ferric oxide, glyceryl dibehenate, hypromellose, polyethylene glycol, pregelatinized starch, titanium dioxide

Questions or comments?

call weekdays 9 AM to 5 PM at 1-800-98-ADVIL

Do not use with other medicines containing ACETAMINOPHEN, can cause liver damage.

Drug Facts

Active ingredients (in each caplet)

Acetaminophen 250 mg Pain reliever

Ibuprofen 125 mg (NSAID) Pain reliever

Uses

- temporarily relieves minor aches and pains due to:
 - headache
 - backache
 - muscular aches
 - minor pain of arthritis
 - toothache
 - menstrual cramps

Warnings

Acetaminophen liver damage warning:

This product contains acetaminophen. Severe liver damage may occur if you take:

- more than 6 caplets in 24 hours, which is the maximum daily amount for this product
- 3 or more alcoholic drinks every day while using this product

Acetaminophen allergy alert: may cause severe skin reactions. Symptoms may include:

- skin reddening

Drug Facts (continued)

blisters rash

If skin reaction occurs, stop use and seek medical help right away.

NSAID allergy alert: ibuprofen may cause a severe allergic reaction, especially in people allergic to aspirin. Symptoms may include:

- hives
- facial swelling
- asthma (wheezing)
- stomach
- skin reddening
- rash
- blisters

If an allergic reaction occurs, stop use and seek medical help right away.



NPA017269

	Actual Size
DRUG FACTS TITLE	9 pt
DRUG FACTS CONTINUED	8 pt
HEADINGS	8 pt
SUBHEADINGS/BODY TEXT	6 pt
LEADING	6.5 pt
# OF CHARACTERS PER INCH	<39
BULLETS	5 pt
SPACE BEFORE BULLET	2 ems
BARLINES, HAIRLINES	1.5 pt, .5 pt
SPACE BETWEEN HAIRLINES AND BOX END	2 spaces
STATEMENT OF IDENTITY (WHAT IT IS) Vertical	N/A
STATEMENT OF IDENTITY (WHAT IT IS) Horizontal	8.1536 pt

This is a representation of an electronic record that was signed electronically. Following this are manifestations of any and all electronic signatures for this electronic record.

/s/

MARTHA K LENHART
05/06/2025 02:49:21 PM