

HIGHLIGHTS OF PRESCRIBING INFORMATION

These highlights do not include all the information needed to use DOVATO safely and effectively. See full prescribing information for DOVATO.

DOVATO (dolutegravir and lamivudine) tablets, for oral use
Initial U.S. Approval: 2019

WARNING: PATIENTS CO-INFECTED WITH HEPATITIS B VIRUS (HBV) AND HUMAN IMMUNODEFICIENCY VIRUS (HIV-1): EMERGENCE OF LAMIVUDINE-RESISTANT HBV AND EXACERBATIONS OF HBV

See full prescribing information for complete boxed warning.

All patients with HIV-1 should be tested for the presence of HBV prior to or when initiating DOVATO. Emergence of lamivudine-resistant HBV variants associated with lamivudine-containing antiretroviral regimens has been reported. If DOVATO is used in patients co-infected with HIV-1 and HBV, additional treatment should be considered for appropriate treatment of chronic HBV; otherwise, consider an alternative regimen.

Severe acute exacerbations of HBV have been reported in patients who are co-infected with HIV-1 and HBV and have discontinued lamivudine, a component of DOVATO. Closely monitor hepatic function in these patients and, if appropriate, initiate anti-HBV treatment. (5.1)

RECENT MAJOR CHANGES

Warnings and Precautions, Embryo-Fetal Toxicity (5.4) 10/2019

INDICATIONS AND USAGE

DOVATO, a two-drug combination of dolutegravir (integrase strand transfer inhibitor [INSTI]) and lamivudine (nucleoside analogue reverse transcriptase inhibitor [NRTI]) is indicated as a complete regimen for the treatment of human immunodeficiency virus type 1 (HIV-1) infection in adults with no antiretroviral treatment history and with no known substitutions associated with resistance to the individual components of DOVATO. (1)

DOSAGE AND ADMINISTRATION

- Prior to or when initiating DOVATO, test patients for HBV infection. (2.1)
- Pregnancy Testing: Perform pregnancy testing before initiation of DOVATO in individuals of childbearing potential. (2.1, 5.4)
- One tablet taken orally once daily with or without food. (2.2)
- The dolutegravir dose (50 mg) in DOVATO is insufficient when coadministered with carbamazepine or rifampin. If DOVATO is coadministered with carbamazepine or rifampin, take one tablet of DOVATO once daily, followed by an additional dolutegravir 50-mg tablet, approximately 12 hours from the dose of DOVATO. (2.3)

DOSAGE FORMS AND STRENGTHS

Tablets: 50 mg of dolutegravir and 300 mg of lamivudine. (3)

CONTRAINDICATIONS

- Prior hypersensitivity reaction to dolutegravir or lamivudine. (4)
- Coadministration with dofetilide. (4)

WARNINGS AND PRECAUTIONS

- Hypersensitivity reactions characterized by rash, constitutional findings, and sometimes organ dysfunction, including liver injury, have been reported with dolutegravir. Discontinue DOVATO immediately if signs or symptoms of hypersensitivity reactions develop, as a delay in stopping treatment may result in a life-threatening reaction. (5.2)
- Hepatotoxicity has been reported in patients receiving a dolutegravir-containing regimen. Patients with underlying hepatitis B or C may be at increased risk for worsening or development of transaminase elevations with DOVATO. Monitoring for hepatotoxicity is recommended. (5.3)
- Embryo-fetal toxicity may occur when used at the time of conception and in early pregnancy. An alternative treatment to DOVATO should be considered at the time of conception through the first trimester of pregnancy due to the risk of neural tube defects. Counsel individuals of childbearing potential to use effective contraception. (2.1, 5.4, 8.1, 8.3)
- Lactic acidosis and severe hepatomegaly with steatosis, including fatal cases, have been reported with the use of nucleoside analogues. (5.5)
- Immune reconstitution syndrome has been reported in patients treated with combination antiretroviral therapy. (5.7)

ADVERSE REACTIONS

The most common adverse reactions (all grades) observed in $\geq 2\%$ (in those receiving DOVATO) were headache, diarrhea, nausea, insomnia, and fatigue. (6.1)

To report SUSPECTED ADVERSE REACTIONS, contact ViiV Healthcare at 1-877-844-8872 or FDA at 1-800-FDA-1088 or www.fda.gov/medwatch.

DRUG INTERACTIONS

- DOVATO is a complete regimen for the treatment of HIV-1 infection; therefore, coadministration with other antiretroviral drugs for the treatment of HIV-1 infection is not recommended. (7.1)
- Refer to the full prescribing information for important drug interactions with DOVATO. (4, 5.6, 7)

USE IN SPECIFIC POPULATIONS

- Pregnancy: An alternative treatment to DOVATO should be considered at the time of conception through the first trimester due to the risk of neural tube defects. (2.1, 5.4, 8.1)
- Lactation: Breastfeeding is not recommended due to the potential for HIV-1 transmission. (8.2)
- Females and males of reproductive potential: Pregnancy testing and contraception are recommended in individuals of childbearing potential. (8.3)
- Renal Impairment: DOVATO is not recommended in patients with creatinine clearance less than 50 mL/min. (8.6)
- Hepatic Impairment: DOVATO is not recommended in patients with severe hepatic impairment (Child-Pugh Score C). (8.7)

See 17 for PATIENT COUNSELING INFORMATION and FDA-approved patient labeling.

Revised: 03/2020

FULL PRESCRIBING INFORMATION: CONTENTS*

WARNING: PATIENTS CO-INFECTED WITH HEPATITIS B VIRUS (HBV) AND HUMAN IMMUNODEFICIENCY VIRUS (HIV-1): EMERGENCE OF LAMIVUDINE-RESISTANT HBV AND EXACERBATIONS OF HBV

1 INDICATIONS AND USAGE

2 DOSAGE AND ADMINISTRATION

- 2.1 Testing Prior to or When Initiating Treatment with DOVATO
- 2.2 Recommended Dosage
- 2.3 Recommended Dosage with Certain Coadministered Drugs
- 2.4 Not Recommended in Patients with Renal Impairment
- 2.5 Not Recommended in Patients with Severe Hepatic Impairment

3 DOSAGE FORMS AND STRENGTHS

4 CONTRAINDICATIONS

5 WARNINGS AND PRECAUTIONS

- 5.1 Patients Co-infected with HIV-1 and HBV: Emergence of Lamivudine-Resistant HBV and the Risk of Posttreatment Exacerbations of HBV
- 5.2 Hypersensitivity Reactions

- 5.3 Hepatotoxicity
- 5.4 Embryo-Fetal Toxicity
- 5.5 Lactic Acidosis and Severe Hepatomegaly with Steatosis
- 5.6 Risk of Adverse Reactions or Loss of Virologic Response Due to Drug Interactions
- 5.7 Immune Reconstitution Syndrome

6 ADVERSE REACTIONS

- 6.1 Clinical Trials Experience
- 6.2 Postmarketing Experience

7 DRUG INTERACTIONS

- 7.1 Coadministration with Other Antiretroviral Drugs
- 7.2 Potential for DOVATO to Affect Other Drugs
- 7.3 Potential for Other Drugs to Affect the Components of DOVATO
- 7.4 Established and Other Potentially Significant Drug Interactions

8 USE IN SPECIFIC POPULATIONS

- 8.1 Pregnancy
- 8.2 Lactation
- 8.3 Females and Males of Reproductive Potential

- 8.4 Pediatric Use
- 8.5 Geriatric Use
- 8.6 Renal Impairment
- 8.7 Hepatic Impairment

10 OVERDOSAGE

11 DESCRIPTION

12 CLINICAL PHARMACOLOGY

- 12.1 Mechanism of Action
- 12.2 Pharmacodynamics
- 12.3 Pharmacokinetics

- 12.4 Microbiology

13 NONCLINICAL TOXICOLOGY

- 13.1 Carcinogenesis, Mutagenesis, Impairment of Fertility

14 CLINICAL STUDIES

- 14.1 Clinical Trials in Adult Subjects

16 HOW SUPPLIED/STORAGE AND HANDLING

17 PATIENT COUNSELING INFORMATION

*Sections or subsections omitted from the full prescribing information are not listed.

FULL PRESCRIBING INFORMATION

WARNING: PATIENTS CO-INFECTED WITH HEPATITIS B VIRUS (HBV) AND HUMAN IMMUNODEFICIENCY VIRUS (HIV-1): EMERGENCE OF LAMIVUDINE-RESISTANT HBV AND EXACERBATIONS OF HBV

All patients with HIV-1 should be tested for the presence of HBV prior to or when initiating DOVATO. Emergence of lamivudine-resistant HBV variants associated with lamivudine-containing antiretroviral regimens has been reported. If DOVATO is used in patients co-infected with HIV-1 and HBV, additional treatment should be considered for appropriate treatment of chronic HBV; otherwise, consider an alternative regimen.

Severe acute exacerbations of HBV have been reported in patients who are co-infected with HIV-1 and HBV and have discontinued lamivudine, a component of DOVATO. Closely monitor hepatic function in these patients and, if appropriate, initiate anti-HBV treatment [see *Warnings and Precautions (5.1)*].

1 INDICATIONS AND USAGE

DOVATO is indicated as a complete regimen for the treatment of human immunodeficiency virus type 1 (HIV-1) infection in adults with no antiretroviral treatment history and with no known substitutions associated with resistance to the individual components of DOVATO.

2 DOSAGE AND ADMINISTRATION

2.1 Testing Prior to or When Initiating Treatment with DOVATO

Prior to or when initiating DOVATO, test patients for HBV infection [see *Warnings and Precautions (5.1)*].

Perform pregnancy testing before initiation of DOVATO in individuals of childbearing potential [see *Warnings and Precautions (5.4), Use in Specific Populations (8.1, 8.3)*].

2.2 Recommended Dosage

DOVATO is a fixed-dose combination product containing 50 mg of dolutegravir and 300 mg of lamivudine. The recommended dosage regimen of DOVATO in adults is one tablet taken orally once daily with or without food [see *Clinical Pharmacology (12.3)*].

2.3 Recommended Dosage with Certain Coadministered Drugs

The dolutegravir dose (50 mg) in DOVATO is insufficient when coadministered with drugs listed in Table 1 that may decrease dolutegravir concentrations; the following dolutegravir dosage regimen is recommended.

Table 1. Dosing Recommendations for DOVATO with Coadministered Drugs

Coadministered Drug	Dosing Recommendation
Carbamazepine, rifampin	An additional dolutegravir 50-mg tablet, separated by 12 hours from DOVATO, should be taken.

2.4 Not Recommended in Patients with Renal Impairment

Because DOVATO is a fixed-dose tablet and cannot be dose adjusted, DOVATO is not recommended in patients with creatinine clearance less than 50 mL per minute [*see Use in Specific Populations (8.6)*].

2.5 Not Recommended in Patients with Severe Hepatic Impairment

DOVATO is not recommended in patients with severe hepatic impairment (Child-Pugh Score C) [*see Use in Specific Populations (8.7)*].

3 DOSAGE FORMS AND STRENGTHS

DOVATO tablets are oval, biconvex, white, film-coated tablets, debossed with “SV 137” on one face. Each tablet contains 50 mg of dolutegravir and 300 mg of lamivudine.

4 CONTRAINDICATIONS

DOVATO is contraindicated in patients:

- with prior hypersensitivity reaction to dolutegravir [*see Warnings and Precautions (5.2)*] or lamivudine.
- receiving dofetilide due to the potential for increased dofetilide plasma concentrations and the risk for serious and/or life-threatening events [*see Drug Interactions (7.2)*].

5 WARNINGS AND PRECAUTIONS

5.1 Patients Co-infected with HIV-1 and HBV: Emergence of Lamivudine-Resistant HBV and the Risk of Posttreatment Exacerbations of HBV

All patients with HIV-1 should be tested for the presence of HBV prior to or when initiating DOVATO.

Emergence of Lamivudine-Resistant HBV

Safety and efficacy of lamivudine have not been established for treatment of chronic HBV in subjects dually infected with HIV-1 and HBV. Emergence of HBV variants associated with resistance to lamivudine has been reported in HIV-1–infected subjects who have received lamivudine-containing antiretroviral regimens in the presence of concurrent infection with HBV. If a decision is made to administer DOVATO to patients co-infected with HIV-1 and HBV, additional treatment should be considered for appropriate treatment of chronic HBV; otherwise, consider an alternative regimen.

Severe Acute Exacerbations of HBV in Patients Co-infected with HIV-1 and HBV

Severe acute exacerbations of HBV have been reported in patients who are co-infected with HIV-1 and HBV and have discontinued products containing lamivudine, and may occur with discontinuation of DOVATO. Patients who are co-infected with HIV-1 and HBV who discontinue DOVATO should be closely monitored with both clinical and laboratory follow-up for at least several months after stopping treatment with DOVATO. If appropriate, initiation of anti-HBV therapy may be warranted, especially in patients with advanced liver disease or cirrhosis, since posttreatment exacerbation of hepatitis may lead to hepatic decompensation and liver failure.

5.2 Hypersensitivity Reactions

Hypersensitivity reactions have been reported with the use of dolutegravir, a component of DOVATO, and were characterized by rash, constitutional findings, and sometimes organ dysfunction, including liver injury. These events were reported in <1% of subjects receiving dolutegravir in Phase 3 clinical trials.

Discontinue DOVATO immediately if signs or symptoms of hypersensitivity reactions develop (including, but not limited to, severe rash or rash accompanied by fever, general malaise, fatigue, muscle or joint aches, blisters or peeling of the skin, oral blisters or lesions, conjunctivitis, facial edema, hepatitis, eosinophilia, angioedema, difficulty breathing). Clinical status, including liver aminotransferases, should be monitored and appropriate therapy initiated. Delay in stopping treatment with DOVATO or other suspect agents after the onset of hypersensitivity may result in a life-threatening reaction [*see Contraindications (4)*].

5.3 Hepatotoxicity

Hepatic adverse events have been reported in patients receiving a dolutegravir-containing regimen [*see Adverse Reactions (6.1)*]. Patients with underlying hepatitis B or C may be at increased risk for worsening or development of transaminase elevations with use of DOVATO [*see Adverse Reactions (6.1)*]. In some cases, the elevations in transaminases were consistent with immune reconstitution syndrome or HBV reactivation particularly in the setting where anti-hepatitis therapy was withdrawn. Cases of hepatic toxicity, including elevated serum liver biochemistries, hepatitis, and acute liver failure, have also been reported in patients receiving a

dolutegravir-containing regimen who had no pre-existing hepatic disease or other identifiable risk factors. Drug-induced liver injury leading to liver transplant has been reported with TRIUMEQ (abacavir, dolutegravir, and lamivudine). Monitoring for hepatotoxicity is recommended.

5.4 Embryo-Fetal Toxicity

An observational study showed an association between dolutegravir, a component of DOVATO, and an increased risk of neural tube defects when dolutegravir was administered at the time of conception and in early pregnancy. As there is limited understanding of reported types of neural tube defects associated with dolutegravir use and because the date of conception may not be determined with precision, an alternative treatment to DOVATO should be considered at the time of conception through the first trimester of pregnancy [*see Use in Specific Populations (8.1)*].

Perform pregnancy testing before initiation of DOVATO in individuals of childbearing potential to exclude use of DOVATO during the first trimester of pregnancy [*see Dosage and Administration (2.1)*]. Initiation of DOVATO is not recommended in individuals actively trying to become pregnant unless there is no suitable alternative [*see Use in Specific Populations (8.1, 8.3)*].

Counsel individuals of childbearing potential to consistently use effective contraception [*see Use in Specific Populations (8.1, 8.3)*].

In individuals of childbearing potential currently on DOVATO who are actively trying to become pregnant, or if pregnancy is confirmed in the first trimester, assess the risks and benefits of continuing DOVATO versus switching to another antiretroviral regimen and consider switching to an alternative regimen [*see Use in Specific Populations (8.1, 8.3)*].

DOVATO may be considered during the second and third trimesters of pregnancy if the expected benefit justifies the potential risk to the pregnant woman and the fetus.

5.5 Lactic Acidosis and Severe Hepatomegaly with Steatosis

Lactic acidosis and severe hepatomegaly with steatosis, including fatal cases, have been reported with the use of nucleoside analogues, including lamivudine (a component of DOVATO). A majority of these cases have been in women. Female sex and obesity may be risk factors for the development of lactic acidosis and severe hepatomegaly with steatosis in patients treated with antiretroviral nucleoside analogues. Monitor closely when administering DOVATO to any patient with known risk factors for liver disease. Treatment with DOVATO should be suspended in any patient who develops clinical or laboratory findings suggestive of lactic acidosis or pronounced hepatotoxicity, which may include hepatomegaly and steatosis even in the absence of marked transaminase elevations.

5.6 Risk of Adverse Reactions or Loss of Virologic Response Due to Drug Interactions

The coadministration of DOVATO and other drugs may result in known or potentially significant drug interactions, some of which may lead to [see *Contraindications (4)*, *Drug Interactions (7.4)*]:

- Loss of therapeutic effect of DOVATO and possible development of resistance.
- Possible clinically significant adverse reactions from greater exposures of coadministered drugs.

See Table 5 for steps to prevent or manage these possible and known significant drug interactions, including dosing recommendations. Consider the potential for drug interactions prior to and during therapy with DOVATO; review coadministered drugs during therapy with DOVATO; and monitor for the adverse reactions associated with the coadministered drugs.

5.7 Immune Reconstitution Syndrome

Immune reconstitution syndrome has been reported in patients treated with combination antiretroviral therapy, including DOVATO. During the initial phase of combination antiretroviral treatment, patients whose immune systems respond may develop an inflammatory response to indolent or residual opportunistic infections (such as *Mycobacterium avium* infection, cytomegalovirus, *Pneumocystis jirovecii* pneumonia [PCP], or tuberculosis), which may necessitate further evaluation and treatment.

Autoimmune disorders (such as Graves' disease, polymyositis, and Guillain-Barré syndrome) have also been reported to occur in the setting of immune reconstitution; however, the time to onset is more variable, and can occur many months after initiation of treatment.

6 ADVERSE REACTIONS

The following adverse reactions are discussed in other sections of the labeling:

- Patients co-infected with HIV-1 and HBV [see *Warnings and Precautions (5.1)*].
- Hypersensitivity reactions [see *Warnings and Precautions (5.2)*].
- Hepatotoxicity [see *Warnings and Precautions (5.3)*].
- Lactic acidosis and severe hepatomegaly with steatosis [see *Warnings and Precautions (5.5)*].
- Immune reconstitution syndrome [see *Warnings and Precautions (5.7)*].

6.1 Clinical Trials Experience

Because clinical trials are conducted under widely varying conditions, adverse reaction rates observed in the clinical trials of a drug cannot be directly compared with rates in the clinical trials of another drug and may not reflect the rates observed in clinical practice.

The safety assessment of DOVATO in HIV-1–infected adults with no antiretroviral treatment history and with a plasma viral load $\leq 500,000$ HIV-1 RNA copies/mL at the screening visit, is based on the pooled primary Week 48 analyses of data from 2 identical, multicenter, double-blind, controlled trials, GEMINI-1 and GEMINI-2. A total of 1,433 HIV-1–infected adults with no antiretroviral treatment history were randomized to dolutegravir (TIVICAY) 50 mg plus lamivudine (EPIVIR) 300 mg, as a complete regimen once daily, or TIVICAY 50 mg plus fixed-dose combination tenofovir disoproxil fumarate (TDF)/emtricitabine (FTC) (TRUVADA), administered once daily.

The rates of adverse events leading to discontinuation in the pooled analysis were 2% of subjects in both treatment arms. The most common adverse events leading to discontinuation were psychiatric disorders: <1% of subjects in both treatment arms.

Adverse reactions (all grades) observed in at least 2% of subjects in either treatment arm of the Week 48 pooled analysis from GEMINI-1 and GEMINI-2 trials are provided in Table 2.

The adverse reactions observed for TIVICAY plus EPIVIR in the Week 48 analysis of the pooled data from GEMINI-1 and GEMINI-2 were generally consistent with the adverse reaction profiles and severities for the individual components when administered with other antiretroviral agents.

Table 2. Adverse Reactions (All Grades) Reported in $\geq 2\%$ of Subjects in Any Treatment Group in Adults with No Antiretroviral Treatment History in GEMINI-1 and GEMINI-2 (Week 48 Pooled Analysis)

Adverse Reaction	TIVICAY plus EPIVIR (n = 716)	TIVICAY plus TRUVADA (n = 717)
Headache ^a	3%	4%
Nausea	2%	5%
Diarrhea	2%	3%
Insomnia	2%	3%
Fatigue ^b	2%	2%
Dizziness	1%	2%

^a The only adverse reaction of Grade 2 or greater occurring in $\geq 1\%$ of subjects treated with TIVICAY plus EPIVIR was headache (1%).

^b Fatigue: includes fatigue, asthenia, and malaise.

Less Common Adverse Reactions

The following adverse reactions occurred in <2% of subjects receiving dolutegravir plus lamivudine or are from studies described in the prescribing information of the individual components, TIVICAY (dolutegravir) and EPIVIR (lamivudine). Some events have been included because of their seriousness and assessment of potential causal relationship.

Blood and Lymphatic Systems Disorders: Anemia, neutropenia, thrombocytopenia.

Gastrointestinal Disorders: Abdominal discomfort, abdominal pain, flatulence, upper abdominal pain, vomiting.

General: Fever.

Hepatobiliary Disorders: Hepatitis.

Immune System Disorders: Hypersensitivity, immune reconstitution syndrome.

Musculoskeletal Disorders: Myositis.

Nervous System Disorders: Somnolence.

Psychiatric Disorders: Anxiety, abnormal dreams, depression. Suicidal ideation, attempt, behavior, or completion; these events were observed primarily in subjects with a pre-existing history of depression or other psychiatric illness.

Renal and Urinary Disorders: Renal impairment.

Skin and Subcutaneous Tissue Disorders: Pruritus, rash.

Laboratory Abnormalities

Selected laboratory abnormalities with a worsening grade from baseline and representing the worst-grade toxicity in $\geq 2\%$ of subjects are presented in Table 3. The mean change from baseline observed for selected lipid values is presented in Table 4.

Table 3. Selected Laboratory Abnormalities (Grades 2 to 4; Week 48 Pooled Analyses) in GEMINI-1 and GEMINI-2 Trials

Laboratory Parameter Preferred Term	TIVICAY plus EPIVIR (n = 716)	TIVICAY plus TRUVADA (n = 717)
ALT		
Grade 2 (>2.5-5.0 x ULN)	2%	3%
Grade 3 to 4 (>5.0 x ULN)	3%	3%
AST		
Grade 2 (>2.5-5.0 x ULN)	3%	3%
Grade 3 to 4 (>5.0 x ULN)	2%	3%
Total Bilirubin		
Grade 2 (1.6-2.5 x ULN)	1%	2%
Grade 3 to 4 (>2.5 x ULN)	<1%	<1%
Creatine kinase		
Grade 2 (6.0-9.9 x ULN)	4%	3%
Grade 3 to 4 (≥ 10.0 x ULN)	4%	5%
Hyperglycemia		

Grade 2 (126-250 mg/dL)	7%	4%
Grade 3 to 4 (>250 mg/dL)	<1%	<1%
Hypophosphatemia (Phosphate)		
Grade 2 (1.4 to <2.0 mg/dL)	7%	8%
Grade 3 to 4 (<1.4 mg/dL)	<1%	<1%
Lipase		
Grade 2 (>1.5-3.0 x ULN)	5%	5%
Grade 3 to 4 (>3.0 x ULN)	<1%	3%

ULN = Upper limit of normal.

Table 4. Mean Change from Baseline in Fasted Lipid Values (Week 48 Pooled Analyses^a) in GEMINI-1 and GEMINI-2 Trials

Laboratory Parameter Preferred Term	TIVICAY plus EPIVIR (n = 716)	TIVICAY plus TRUVADA (n = 717)
Cholesterol (mg/dL)	13.3	-6.9
HDL cholesterol (mg/dL)	5.6	0.8
LDL cholesterol (mg/dL)	7.5	-6.3
Triglycerides (mg/dL)	3.7	-6.9
Total cholesterol/HDL cholesterol ratio	-0.1	-0.3

^a Subjects on lipid-lowering agents at baseline are excluded (TIVICAY plus EPIVIR, n = 29; TIVICAY plus TRUVADA, n = 23). Lipid last observation carried forward data were used such that the last available fasted, on-treatment lipid value prior to the initiation of a lipid-lowering agent is used in place of future observed values. A total of 23 and 13 subjects receiving TIVICAY plus EPIVIR and TIVICAY plus TRUVADA, respectively, initiated lipid-lowering agents post-baseline.

Changes in Serum Creatinine: Dolutegravir has been shown to increase serum creatinine due to inhibition of tubular secretion of creatinine without affecting renal glomerular function [see *Clinical Pharmacology (12.2)*]. Increases in serum creatinine occurred within the first 4 weeks of treatment in both arms and remained stable through 48 weeks. A mean change from baseline of 0.116 mg/dL and 0.154 mg/dL was observed after 48 weeks of treatment with TIVICAY plus EPIVIR and TIVICAY plus TRUVADA, respectively. These changes are not considered to be clinically relevant.

6.2 Postmarketing Experience

The following adverse reactions have been identified during postmarketing experience in patients receiving a dolutegravir- or lamivudine-containing regimen. Because postmarketing reactions are reported voluntarily from a population of uncertain size, it is not always possible to reliably estimate their frequency or establish a causal relationship to drug exposure.

Body as a Whole

Redistribution/accumulation of body fat.

Endocrine and Metabolic

Hyperglycemia.

General

Weakness.

Hemic and Lymphatic

Anemia (including pure red cell aplasia and severe anemias progressing on therapy).

Hepatic and Pancreatic

Lactic acidosis and hepatic steatosis [see *Warnings and Precautions (5.5)*], pancreatitis, posttreatment exacerbations of HBV [see *Warnings and Precautions (5.1)*].

Hepatobiliary Disorders

Acute liver failure, hepatotoxicity.

Hypersensitivity

Anaphylaxis, urticaria.

Investigations

Weight increased.

Musculoskeletal

Arthralgia, CPK elevation, muscle weakness, myalgia, rhabdomyolysis.

Nervous System

Paresthesia, peripheral neuropathy.

Skin

Alopecia.

7 DRUG INTERACTIONS

7.1 Coadministration with Other Antiretroviral Drugs

DOVATO is a complete regimen for the treatment of HIV-1 infection; therefore, coadministration with other antiretroviral drugs for the treatment of HIV-1 infection is not recommended [see *Indications and Usage (1)*]. Information regarding potential drug-drug interactions with other antiretroviral drugs is not provided [see *Contraindications (4)*, *Warnings and Precautions (5.6)*, *Clinical Pharmacology (12.3)*].

7.2 Potential for DOVATO to Affect Other Drugs

Dolutegravir, a component of DOVATO, inhibits the renal OCT2 and multidrug and toxin extrusion transporter (MATE)1; thus, it may increase plasma concentrations of drugs eliminated via OCT2 or MATE1 such as dofetilide, dalfampridine, and metformin [see *Contraindications (4)*, *Drug Interactions (7.4)*, *Clinical Pharmacology (12.3)*].

7.3 Potential for Other Drugs to Affect the Components of DOVATO

Dolutegravir is metabolized by uridine diphosphate (UDP)-glucuronosyl transferase (UGT)1A1 with some contribution from cytochrome P450 (CYP)3A. Dolutegravir is also a substrate of UGT1A3, UGT1A9, breast cancer resistance protein (BCRP), and P-glycoprotein (P-gp) in vitro. Drugs that induce those enzymes and transporters may decrease dolutegravir plasma concentrations and reduce the therapeutic effect of DOVATO [see *Drug Interactions (7.4)*, *Clinical Pharmacology (12.3)*]. Coadministration of DOVATO and other drugs that inhibit these enzymes may increase dolutegravir plasma concentrations.

Coadministration of dolutegravir with polyvalent cation-containing products may lead to decreased absorption of dolutegravir [see *Drug Interactions (7.4)*, *Clinical Pharmacology (12.3)*].

7.4 Established and Other Potentially Significant Drug Interactions

No drug interaction studies were conducted with DOVATO. The drug interactions described are based on studies conducted with dolutegravir or lamivudine when administered alone [see *Clinical Pharmacology (12.3)*]. Information regarding potential drug interactions with DOVATO are provided in Table 5. These recommendations are based on either drug interaction trials or predicted interactions due to the expected magnitude of interaction and potential for serious adverse events or loss of efficacy [see *Contraindications (4)*, *Clinical Pharmacology (12.3)*].

Table 5. Established and Other Potentially Significant Drug Interactions for DOVATO: Alterations in Dose May Be Recommended Based on Drug Interaction Trials or Predicted Interactions

Coadministered Drug Class: Drug Name	Effect on Concentration	Clinical Comment
Antiarrhythmic: Dofetilide	↑Dofetilide	Coadministration is contraindicated with DOVATO [see <i>Contraindications (4)</i>].
Anticonvulsant: Carbamazepine ^a	↓Dolutegravir	An additional dolutegravir 50-mg dose should be taken, separated by 12 hours from DOVATO [see <i>Dosage and Administration (2.3)</i>].

<p>Anticonvulsants: Oxcarbazepine Phenytoin Phenobarbital</p>	<p>↓Dolutegravir</p>	<p>Avoid coadministration with DOVATO because there are insufficient data to make dosing recommendations.</p>
<p>Antidiabetic: Metformin^a</p>	<p>↑Metformin</p>	<p>Refer to the prescribing information for metformin for assessing the benefit and risk of concomitant use of DOVATO and metformin.</p>
<p>Antimycobacterial: Rifampin^a</p>	<p>↓Dolutegravir</p>	<p>An additional 50-mg dose of dolutegravir should be taken, separated by 12 hours from DOVATO [see <i>Dosage and Administration (2.3)</i>].</p>
<p>Herbal product: St. John's wort (<i>Hypericum perforatum</i>)</p>	<p>↓Dolutegravir</p>	<p>Avoid coadministration with DOVATO because there are insufficient data to make dosing recommendations.</p>
<p>Medications containing polyvalent cations (e.g., Mg or Al): Cation-containing antacids^a or laxatives Sucralfate Buffered medications</p>	<p>↓Dolutegravir</p>	<p>Administer DOVATO 2 hours before or 6 hours after taking medications containing polyvalent cations.</p>
<p>Oral calcium and iron supplements, including multivitamins containing calcium or iron^a</p>	<p>↓Dolutegravir</p>	<p>When taken with food, DOVATO and supplements or multivitamins containing calcium or iron can be taken at the same time. Under fasting conditions, DOVATO should be taken 2 hours before or 6 hours after taking supplements containing calcium or iron.</p>
<p>Potassium channel blocker: Dalfampridine</p>	<p>↑Dalfampridine</p>	<p>Elevated levels of dalfampridine increase the risk of seizures. The potential benefits of taking dalfampridine concurrently with DOVATO should be considered</p>

		against the risk of seizures in these patients.
Sorbitol^a	↓Lamivudine	When possible, avoid use of sorbitol-containing medicines with DOVATO.

↑ = Increase, ↓ = Decrease.

^a See *Clinical Pharmacology (12.3) Table 8 or Table 9 for magnitude of interaction.*

8 USE IN SPECIFIC POPULATIONS

8.1 Pregnancy

Pregnancy Exposure Registry

There is a pregnancy exposure registry that monitors pregnancy outcomes in individuals exposed to DOVATO during pregnancy. Healthcare providers are encouraged to register patients by calling the Antiretroviral Pregnancy Registry (APR) at 1-800-258-4263.

Risk Summary

Data from a birth outcome surveillance study have identified an increased risk of neural tube defects when dolutegravir, a component of DOVATO, is administered at the time of conception compared with non-dolutegravir-containing antiretroviral regimens. As defects related to closure of the neural tube occur from conception through the first 6 weeks of gestation, embryos exposed to dolutegravir from the time of conception through the first 6 weeks of gestation are at potential risk. In addition, 2 of the 5 birth defects (encephalocele and iniencephaly) that have been observed with dolutegravir use, although often termed neural tube defects, may occur post-neural tube closure, the time period of which may be later than 6 weeks of gestation, but within the first trimester. Due to the limited understanding of the types of reported neural tube defects associated with dolutegravir use and because the date of conception may not be determined with precision, an alternative treatment to DOVATO should be considered at the time of conception through the first trimester of pregnancy. Initiation of DOVATO is not recommended in individuals actively trying to become pregnant unless there is no suitable alternative (*see Data*).

In individuals of childbearing potential currently on DOVATO who are actively trying to become pregnant, or if pregnancy is confirmed in the first trimester, assess the risks and benefits of continuing DOVATO versus switching to another antiretroviral regimen and consider switching to an alternative regimen. Advise pregnant individuals of the potential risk to the embryo exposed to DOVATO from the time of conception through the first trimester of pregnancy. A benefit-risk assessment should consider factors such as feasibility of switching, tolerability, ability to maintain viral suppression, and risk of transmission to the infant against the risk of neural tube defects [*see Warnings and Precaution (5.4)*].

There are insufficient human data on the use of DOVATO during pregnancy to definitively assess a drug-associated risk for birth defects and miscarriage. The background risk for major

birth defects for the indicated population is unknown. In the U.S. general population, the estimated background rate for major birth defects and miscarriage in clinically recognized pregnancies is 2% to 4% and 15% to 20%, respectively.

In animal reproduction studies, no evidence of adverse developmental outcomes was observed with dolutegravir at systemic exposures (AUC) less than (rabbits) and 50 times (rats) the exposure in humans at the recommended human dose (RHD) (*see Data*). Oral administration of lamivudine to pregnant rabbits during organogenesis resulted in embryoletality at systemic exposure (AUC) similar to the RHD; however, no adverse developmental effects were observed with oral administration of lamivudine to pregnant rats during organogenesis at plasma concentrations (C_{max}) 35 times the RHD (*see Data*).

Data

Human Data: Dolutegravir: In a birth outcome surveillance study in Botswana, there were 5 cases of neural tube defects reported out of 1,683 deliveries (0.3%) to women who were exposed to dolutegravir-containing regimens at the time of conception. In comparison, the neural tube defect prevalence rates were 0.1% (15/14,792 deliveries) in the non-dolutegravir arm and 0.08% (70/89,372 deliveries) in the HIV-uninfected arm. Five cases reported with dolutegravir included one case each of encephalocele, anencephaly, and iniencephaly, and 2 cases of myelomeningocele. In the same study, one infant out of 3,840 (0.03%) deliveries to woman who started dolutegravir during pregnancy had a neural tube defect, compared with 3 infants out of 5,952 (0.05%) deliveries to women who started non-dolutegravir-containing regimens during pregnancy.

Data analyzed to date from other sources including the APR, clinical trials, and postmarketing data are insufficient to address the risk of neural tube defects with dolutegravir.

Data from the birth outcome surveillance study described above and postmarketing sources with more than 1,000 pregnancy outcomes from second and third trimester exposure in pregnant women indicate no evidence of increased risk of adverse birth outcomes.

Lamivudine: Based on prospective reports to the APR of over 12,000 exposures to lamivudine during pregnancy resulting in live births (including over 5,000 exposed in the first trimester), there was no difference between the overall risk of birth defects for lamivudine compared with the background birth defect rate of 2.7% in the U.S. reference population of the Metropolitan Atlanta Congenital Defects Program (MACDP). The prevalence of defects in live births was 3.0% (95% CI: 2.6% to 3.5%) following first trimester exposure to lamivudine-containing regimens and 2.9% (95% CI: 2.5%, 3.3%) following second/third trimester exposure to lamivudine-containing regimens.

Lamivudine pharmacokinetics were studied in pregnant women during 2 clinical trials conducted in South Africa. The trials assessed pharmacokinetics in 16 women at 36 weeks' gestation using lamivudine 150 mg twice daily with zidovudine, 10 women at 38 weeks' gestation using

lamivudine 150 mg twice daily with zidovudine, and 10 women at 38 weeks' gestation using lamivudine 300 mg twice daily without other antiretrovirals. These trials were not designed or powered to provide efficacy information. Lamivudine concentrations were generally similar in maternal, neonatal, and umbilical cord serum samples. In a subset of subjects, amniotic fluid specimens were collected following natural rupture of membranes and confirmed that lamivudine crosses the placenta in humans. Based on limited data at delivery, median (range) amniotic fluid concentrations of lamivudine were 3.9-fold (1.2- to 12.8-fold) greater compared with paired maternal serum concentration (n = 8).

Animal Data: Dolutegravir: Dolutegravir was administered orally to pregnant rats and rabbits (up to 1,000 mg/kg/day) on Gestation Days 6 to 17 and 6 to 18, respectively, and also to rats on Gestation Day 6 to Lactation/Postpartum Day 20. No adverse effects on embryo-fetal (rats and rabbits) or pre/postnatal (rats) development were observed up to the highest dose tested. During organogenesis, systemic exposures (AUC) to dolutegravir in rabbits were less than the exposure in humans at the RHD and in rats were approximately 50 times the exposure in humans at the RHD. In the rat pre/postnatal development study, decreased body weight of the developing offspring was observed during lactation at a maternally toxic dose (approximately 50 times human exposure at the RHD).

Lamivudine: Lamivudine was administered orally to pregnant rats (at 90, 600, and 4,000 mg/kg/day) and rabbits (at 90, 300 and 1,000 mg/kg/day and at 15, 40, and 90 mg/kg/day) during organogenesis (on Gestation Days 7 through 16 [rat] and 8 through 20 [rabbit]). No evidence of fetal malformations due to lamivudine was observed in rats and rabbits at doses producing plasma concentrations (C_{max}) approximately 35 times higher than human exposure at the RHD. Evidence of early embryoletality was seen in the rabbit at systemic exposures (AUC) similar to those observed in humans, but there was no indication of this effect in the rat at plasma concentrations (C_{max}) 35 times higher than human exposure at the RHD. Studies in pregnant rats showed that lamivudine is transferred to the fetus through the placenta. In the fertility/pre- and postnatal development study in rats, lamivudine was administered orally at doses of 180, 900, and 4,000 mg/kg/day (from prior to mating through Postnatal Day 20). In the study, development of the offspring, including fertility and reproductive performance, was not affected by the maternal administration of lamivudine.

8.2 Lactation

Risk Summary

The Centers for Disease Control and Prevention recommends that HIV-1–infected mothers in the United States not breastfeed their infants to avoid risking postnatal transmission of HIV-1 infection.

Lamivudine, a component of DOVATO, is present in human milk. It is not known whether dolutegravir, a component of DOVATO, is present in human milk. When administered to lactating rats, dolutegravir was present in milk (*see Data*). There is no information on the effects

of DOVATO or the components of DOVATO on the breastfed infant or the effects of the drugs on milk production.

Because of the potential for (1) HIV-1 transmission (in HIV-negative infants), (2) developing viral resistance (in HIV-positive infants), and (3) adverse reactions in a breastfed infant similar to those seen in adults, instruct mothers not to breastfeed if they are receiving DOVATO.

Data

Animal Data: Dolutegravir was the primary drug-related component excreted into the milk of lactating rats following a single oral dose of 50 mg/kg on Lactation Day 10, with milk concentrations of up to approximately 1.3 times that of maternal plasma concentrations observed 8 hours postdose.

8.3 Females and Males of Reproductive Potential

Pregnancy Testing

Perform pregnancy testing in individuals of childbearing potential before initiation of DOVATO [see *Dosage and Administration (2.1)*].

Contraception

In individuals of childbearing potential currently on DOVATO who are actively trying to become pregnant, or if pregnancy is confirmed in the first trimester, assess the risks and benefits of continuing DOVATO versus switching to another antiretroviral regimen and consider switching to an alternative regimen [see *Warnings and Precautions (5.4), Use in Specific Populations (8.1)*].

Counsel individuals of childbearing potential who are taking DOVATO to consistently use effective contraception.

8.4 Pediatric Use

The safety and efficacy of DOVATO have not been established in pediatric patients.

8.5 Geriatric Use

Clinical trials of DOVATO did not include sufficient numbers of subjects aged 65 and over to determine whether they respond differently from younger subjects. In general, caution should be exercised in the administration of DOVATO in elderly patients reflecting the greater frequency of decreased hepatic, renal, or cardiac function, and of concomitant disease or other drug therapy [see *Clinical Pharmacology (12.3)*].

8.6 Renal Impairment

DOVATO is not recommended for patients with creatinine clearance <50 mL/min because DOVATO is a fixed-dose combination and the dosage of the individual components cannot be adjusted. If a dose reduction of lamivudine, a component of DOVATO, is required for patients with creatinine clearance <50 mL/min, then the individual components should be used.

8.7 Hepatic Impairment

No dosage adjustment of DOVATO is necessary in patients with mild or moderate hepatic impairment (Child-Pugh Score A or B). Dolutegravir has not been studied in patients with severe hepatic impairment (Child-Pugh Score C); therefore, DOVATO is not recommended for patients with severe hepatic impairment.

10 OVERDOSAGE

There is no known specific treatment for overdose with DOVATO. If overdose occurs, the patient should be monitored and standard supportive treatment applied as required.

Dolutegravir

As dolutegravir is highly bound to plasma proteins, it is unlikely that it will be significantly removed by dialysis.

Lamivudine

Because a negligible amount of lamivudine was removed via (4-hour) hemodialysis, continuous ambulatory peritoneal dialysis, and automated peritoneal dialysis, it is not known if continuous hemodialysis would provide clinical benefit in a lamivudine overdose event.

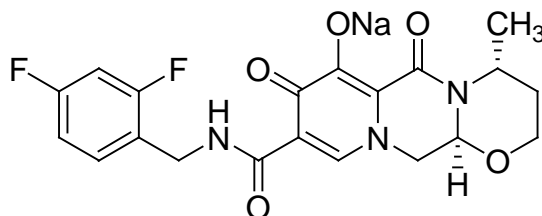
11 DESCRIPTION

DOVATO is a fixed-dose combination tablet containing dolutegravir (as dolutegravir sodium), an INSTI, and lamivudine (also known as 3TC), an NRTI.

DOVATO tablets are for oral administration. Each film-coated tablet contains the active ingredients 50 mg of dolutegravir (equivalent to 52.6 mg dolutegravir sodium) and 300 mg of lamivudine and the inactive ingredients magnesium stearate, mannitol, microcrystalline cellulose, povidone K29/32, sodium starch glycolate, sodium stearyl fumarate. The tablet film-coating contains the inactive ingredients hypromellose, polyethylene glycol, titanium dioxide.

Dolutegravir

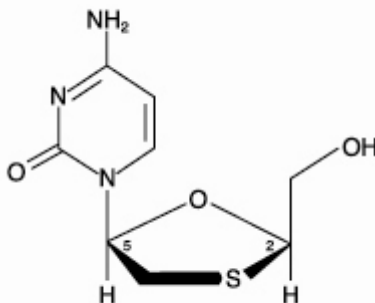
The chemical name of dolutegravir sodium is sodium (4*R*,12*aS*)-9-[[[(2,4-difluorophenyl)methyl]carbamoyl]-4-methyl-6,8-dioxo-3,4,6,8,12,12*a*-hexahydro-2*H*-pyrido[1',2':4,5]pyrazino[2,1-*b*][1,3]oxazin-7-olate. The empirical formula is C₂₀H₁₈F₂N₃NaO₅ and the molecular weight is 441.36 g/mol. It has the following structural formula:



Dolutegravir sodium is a white to light yellow powder and is slightly soluble in water.

Lamivudine

The chemical name of lamivudine is (2R,cis)-4-amino-1-(2-hydroxymethyl-1,3-oxathiolan-5-yl)-(1H)-pyrimidin-2-one. Lamivudine is the (-)-enantiomer of a dideoxy analogue of cytidine. Lamivudine has also been referred to as (-)-2',3'-dideoxy, 3'-thiacytidine. It has a molecular formula of $C_8H_{11}N_3O_3S$ and a molecular weight of 229.3 g/mol. It has the following structural formula:



Lamivudine is a white to off-white crystalline solid and is soluble in water.

12 CLINICAL PHARMACOLOGY

12.1 Mechanism of Action

DOVATO is a fixed-dose combination of the HIV-1 antiretroviral agents, dolutegravir and lamivudine [see *Microbiology (12.4)*].

12.2 Pharmacodynamics

Cardiac Electrophysiology

The effect of combination therapy as DOVATO or lamivudine given alone on the QT interval has not been studied. At a 250-mg suspension dose (exposures approximately 3-fold that of the 50-mg once-daily dose at steady state), dolutegravir given alone did not prolong the QTc interval to any clinically relevant extent.

Effects of Dolutegravir on Renal Function

No clinically significant dolutegravir exposure-response relationship on the glomerular filtration rate or effective renal plasma flow was observed. The effect of dolutegravir on renal function was evaluated in an open-label, randomized, 3-arm, parallel, placebo-controlled trial in healthy subjects (n = 37) who received dolutegravir 50 mg once daily (n = 12), dolutegravir 50 mg twice daily (n = 13), or placebo once daily (n = 12) for 14 days.

12.3 Pharmacokinetics

The C_{max} , C_{trough} , and AUC_{tau} parameters of the components of DOVATO are provided in Table 6.

Table 6. Multiple-Dose Pharmacokinetic Parameters of the Components of DOVATO

Parameter Mean (%CV)	Dolutegravir ^a	Lamivudine ^b
C_{max} (mcg/mL)	3.67 (20%)	2.04 (26%)
C_{trough} (mcg/mL)	1.11 (46%)	0.042 (38%)
AUC_{tau} (mcg/h/mL)	53.6 (27%)	8.87 (21%)

^a Based on dolutegravir 50-mg once-daily dosage administered to antiretroviral (ART) treatment-naïve adults.

^b Based on lamivudine 300-mg once-daily dosage administered to healthy subjects.

C_{max} = Maximum concentration; C_{trough} = Lowest concentration before administration of the next dose; AUC_{tau} = Area under the concentration-time curve integrated across the dosing interval.

The absorption, distribution, and elimination pharmacokinetic parameters of the components of DOVATO are provided in Table 7.

Table 7. Pharmacokinetic Properties of the Components of DOVATO

Pharmacokinetic Parameters	Dolutegravir	Lamivudine
Absorption		
T_{max} (h), median ^a	2.5	1
<i>Effect of Food</i>		
High-fat meal ^b (relative to fasting)	No clinically significant differences in the pharmacokinetics of either component (after administration of DOVATO) were observed ^c	
Distribution		
Plasma protein binding ^d	Approximately 99%	36%
Blood-to-plasma ratio	0.44 - 0.54	1.1 - 1.2
Elimination		
$t_{1/2}$ (h)	Approximately 14	13 - 19
<i>Metabolism</i>		
Metabolic pathways	UGT1A1 (primary) CYP3A (minor)	Not significantly metabolized
<i>Excretion</i>		
Major route of elimination	Metabolism	Renal, by OCT system
Urine (unchanged)	31% (<1%) ^e	Approximately 70% ^f
Feces (unchanged)	64% (53%) ^e	—

^a After administration of DOVATO (fasted state).

- ^b High-fat meal is approximately 900 kcal, 56% fat.
 - ^c The geometric mean (90% confidence interval) AUC ratio (fed/fasted) of dolutegravir and lamivudine is 1.33 (1.18, 1.48) and 0.91 (0.87, 0.96), respectively.
 - ^d Based on in vitro data.
 - ^e Based on single-dose, mass balance study of radiolabeled dolutegravir.
 - ^f Based on 24-hour urine collection obtained after oral or IV administration.
- T_{\max} = Time to maximum concentration (C_{\max}); $t_{1/2}$ = Elimination half-life.

Specific Populations

No clinically significant differences in the pharmacokinetics of the components of DOVATO were observed based on age, sex, or race. Pharmacokinetic data for dolutegravir and lamivudine in subjects aged 65 years and older are limited. The effect of renal or hepatic impairment on the pharmacokinetics of DOVATO is unknown.

Drug Interaction Studies

Clinical Studies: No drug interaction studies were conducted with DOVATO. The drug interaction studies described below were conducted with dolutegravir or lamivudine when used alone. Table 8 summarizes the effects of dolutegravir on the pharmacokinetics of coadministered drugs. Table 9 summarizes the effect of other drugs on the pharmacokinetics of dolutegravir when used alone and Table 10 summarizes the effect of sorbitol on the pharmacokinetics of lamivudine when used alone.

Table 8. Effect of Dolutegravir on the Pharmacokinetics of Coadministered Drugs

Coadministered Drug(s) and Dose(s)	Dose of Dolutegravir	Geometric Mean Ratio (90% CI) of Pharmacokinetic Parameters of Coadministered Drug with/without Dolutegravir No Effect = 1.00		
		C_{\max}	AUC	C_{τ} or C_{24}
Daclatasvir 60 mg once daily	50 mg once daily	1.03 (0.84 to 1.25)	0.98 (0.83 to 1.15)	1.06 (0.88 to 1.29)
Ethinyl estradiol 0.035 mg	50 mg twice daily	0.99 (0.91 to 1.08)	1.03 (0.96 to 1.11)	1.02 (0.93 to 1.11)
Grazoprevir 200 mg once daily	50 mg single dose	0.64 (0.44, 0.93)	0.81 (0.67, 0.97)	0.86 (0.79, 0.93)
Metformin ^a 500 mg twice daily	50 mg once daily	1.66 (1.53 to 1.81)	1.79 (1.65 to 1.93)	–
Metformin ^a 500 mg twice daily	50 mg twice daily	2.11 (1.91 to 2.33)	2.45 (2.25 to 2.66)	–

Methadone 16 to 150 mg	50 mg twice daily	1.00 (0.94 to 1.06)	0.98 (0.91 to 1.06)	0.99 (0.91 to 1.07)
Midazolam 3 mg	25 mg once daily	–	0.95 (0.79 to 1.15)	–
Norelgestromin ^b 0.25 mg	50 mg twice daily	0.89 (0.82 to 0.97)	0.98 (0.91 to 1.04)	0.93 (0.85 to 1.03)
Sofosbuvir 400 mg once daily Metabolite (GS-331007)	50 mg once daily	0.88 (0.80, 0.98) 1.01 (0.93, 1.10)	0.92 (0.85, 0.99) 0.99 (0.97, 1.01)	NA 0.99 (0.97, 1.01)
Velpatasvir 100 mg once daily	50 mg once daily	0.94 (0.86, 1.02)	0.91 (0.84, 0.98)	0.88 (0.82, 0.94)

^a OCT2 or MATE1 substrate.

^b Norelgestromin is the active metabolite of norgestimate.

No clinically significant differences in the pharmacokinetics of tenofovir (organic anion transporter [OAT]1 and OAT3 substrates) or para-amino hippurate (OAT1 and OAT3 substrates) were observed when coadministered with dolutegravir.

No clinically significant differences in the pharmacokinetics of trimethoprim/sulfamethoxazole were observed when coadministered with lamivudine.

Table 9. Effect of Coadministered Drugs on the Pharmacokinetics of Dolutegravir

Coadministered Drug(s) and Dose(s)	Dose of Dolutegravir	Geometric Mean Ratio (90% CI) of Dolutegravir Pharmacokinetic Parameters with/without Coadministered Drugs No Effect = 1.00		
		C _{max}	AUC	C _{tau} or C ₂₄
Antacid (MAALOX) simultaneous administration	50-mg single dose	0.28 (0.23 to 0.33)	0.26 (0.22 to 0.32)	0.26 (0.21 to 0.31)
Antacid (MAALOX) 2 h after dolutegravir	50-mg single dose	0.82 (0.69 to 0.98)	0.74 (0.62 to 0.90)	0.70 (0.58 to 0.85)
Calcium carbonate 1,200 mg simultaneous administration (fasted)	50-mg single dose	0.63 (0.50 to 0.81)	0.61 (0.47 to 0.80)	0.61 (0.47 to 0.80)
Calcium carbonate 1,200 mg simultaneous administration (fed)	50-mg single dose	1.07 (0.83 to 1.38)	1.09 (0.84 to 1.43)	1.08 (0.81 to 1.42)
Calcium carbonate 1,200 mg 2 h after dolutegravir	50-mg single dose	1.00 (0.78 to 1.29)	0.94 (0.72 to 1.23)	0.90 (0.68 to 1.19)

Carbamazepine 300 mg twice daily	50 mg once daily	0.67 (0.61 to 0.73)	0.51 (0.48 to 0.55)	0.27 (0.24 to 0.31)
Daclatasvir 60 mg once daily	50 mg once daily	1.29 (1.07 to 1.57)	1.33 (1.11 to 1.59)	1.45 (1.25 to 1.68)
Ferrous fumarate 324 mg simultaneous administration (fasted)	50-mg single dose	0.43 (0.35 to 0.52)	0.46 (0.38 to 0.56)	0.44 (0.36 to 0.54)
Ferrous fumarate 324 mg simultaneous administration (fed)	50-mg single dose	1.03 (0.84 to 1.26)	0.98 (0.81 to 1.20)	1.00 (0.81 to 1.23)
Ferrous fumarate 324 mg 2 h after dolutegravir	50-mg single dose	0.99 (0.81 to 1.21)	0.95 (0.77 to 1.15)	0.92 (0.74 to 1.13)
Multivitamin (One-A-Day) simultaneous administration	50-mg single dose	0.65 (0.54 to 0.77)	0.67 (0.55 to 0.81)	0.68 (0.56 to 0.82)
Omeprazole 40 mg once daily	50-mg single dose	0.92 (0.75 to 1.11)	0.97 (0.78 to 1.20)	0.95 (0.75 to 1.21)
Prednisone 60 mg once daily with taper	50 mg once daily	1.06 (0.99 to 1.14)	1.11 (1.03 to 1.20)	1.17 (1.06 to 1.28)
Rifampin ^a 600 mg once daily	50 mg twice daily	0.57 (0.49 to 0.65)	0.46 (0.38 to 0.55)	0.28 (0.23 to 0.34)
Rifampin ^b 600 mg once daily	50 mg twice daily	1.18 (1.03 to 1.37)	1.33 (1.15 to 1.53)	1.22 (1.01 to 1.48)
Rifabutin 300 mg once daily	50 mg once daily	1.16 (0.98 to 1.37)	0.95 (0.82 to 1.10)	0.70 (0.57 to 0.87)

^a Comparison is rifampin taken with dolutegravir 50 mg twice daily compared with dolutegravir 50 mg twice daily.

^b Comparison is rifampin taken with dolutegravir 50 mg twice daily compared with dolutegravir 50 mg once daily.

Table 10. Effect of Sorbitol on the Pharmacokinetics of Lamivudine

Coadministered Drug and Dose ^a		Lamivudine Pharmacokinetic Parameters (% Decreased)		
		C _{max}	AUC ₀₋₂₄	AUC _{inf}
Sorbitol (Excipient)	3.2 grams	28%	20%	14%
	10.2 grams	52%	39%	32%
	13.4 grams	55%	44%	36%

^a Coadministered with a single dose of lamivudine 300 mg.

C_{max} = Maximum concentration; AUC₍₀₋₂₄₎ = Area under the concentration-time curve integrated from time of administration to 24 hours; AUC_(inf) = Area under the concentration-time curve from the time of administration to infinity.

No clinically significant differences in the pharmacokinetics of lamivudine were observed when coadministered with trimethoprim (MATE1, MATE2-K, and OCT2 inhibitor)/sulfamethoxazole, interferon alfa, or ribavirin.

In Vitro Studies Where Drug Interaction Potential Was Not Further Evaluated Clinically:

Dolutegravir: Dolutegravir does not inhibit CYP1A2, CYP2A6, CYP2B6, CYP2C8, CYP2C9, CYP2C19, CYP2D6, or CYP3A. Dolutegravir does not induce CYP1A2, CYP2B6, or CYP3A4.

Dolutegravir is a substrate of UGT1A3 and UGT1A9. Dolutegravir does not inhibit UGT1A1 or UGT2B7.

Dolutegravir is a substrate of BCRP and P-gp. Dolutegravir does not inhibit P-gp, BCRP, bile salt export pump (BSEP), organic anion transporter polypeptide (OATP)1B1, OATP1B3, OCT1, multidrug resistance protein (MRP)2, or MRP4. Dolutegravir is not a substrate of OATP1B1 or OATP1B3.

Lamivudine: Lamivudine is a substrate of P-gp and BCRP. Lamivudine does not inhibit OATP1B1/3, BCRP, P-gp, MATE1, MATE2-K, OCT1, OCT2, or OCT3.

12.4 Microbiology

Mechanism of Action

Dolutegravir: Dolutegravir inhibits HIV integrase by binding to the integrase active site and blocking the strand transfer step of retroviral DNA integration which is essential for the HIV replication cycle. Strand transfer biochemical assays using purified recombinant HIV-1 integrase and pre-processed substrate DNA resulted in IC₅₀ values of 2.7 nM and 12.6 nM.

Lamivudine: Lamivudine is a synthetic nucleoside analogue. Intracellularly lamivudine is phosphorylated to its active 5'-triphosphate metabolite, lamivudine triphosphate (3TC-TP). The principal mode of action of 3TC-TP is inhibition of reverse transcriptase (RT) via DNA chain termination after incorporation of the nucleotide analogue.

Antiviral Activity in Cell Culture

Dolutegravir: Dolutegravir exhibited antiviral activity against laboratory strains of wild-type HIV-1 with mean concentrations of drug necessary to effect viral replication by 50 percent (EC₅₀) values of 0.5 nM (0.21 ng/mL) to 2.1 nM (0.85 ng/mL) in peripheral blood mononuclear cells (PBMCs) and MT-4 cells.

Dolutegravir exhibited antiviral activity against 13 clinically diverse clade B isolates with a mean EC₅₀ value of 0.52 nM in a viral integrase susceptibility assay using the integrase coding region from clinical isolates. Dolutegravir demonstrated antiviral activity in cell culture against a panel of HIV-1 clinical isolates (3 in each group of M [clades A-G], and 3 in group O) with EC₅₀ values ranging from 0.02 nM to 2.14 nM for HIV-1. Dolutegravir EC₅₀ values against three HIV-2 clinical isolates in PBMC assays ranged from 0.09 nM to 0.61 nM.

Lamivudine: The antiviral activity of lamivudine against HIV-1 was assessed in a number of cell lines including monocytes and PBMCs using standard susceptibility assays. EC₅₀ values were in the range of 3 to 15,000 nM (1 nM = 230 ng/mL). The EC₅₀ values of lamivudine against different HIV-1 clades (A-G) and group O viruses ranged from 1 to 120 nM, and against HIV-2 isolates from 3 to 120 nM in PBMCs.

Antiviral Activity in Combination with Other Antiviral Agents

Neither dolutegravir nor lamivudine were antagonistic to all tested anti-HIV agents.

Resistance

Cell Culture: Dolutegravir: Dolutegravir-resistant viruses were selected in cell culture starting from different wild-type HIV-1 strains and clades. Amino acid substitutions emerged in different passages; the substitution G118R emergence conferred decreased susceptibility to dolutegravir of 10-fold, while substitutions E92Q, S153F or Y, G193E, or R263K conferred decreased susceptibility to dolutegravir of up to 4-fold.

Lamivudine: HIV-1 resistance to lamivudine involves the development of a M184V or M184I amino acid change close to the active site of the viral RT. This variant arises both in cell culture and in HIV-1–infected patients treated with lamivudine-containing antiretroviral therapy. Substitutions M184V or I confer high-level resistance to lamivudine.

Clinical Subjects: At Week 48, none of the 6 subjects in the dolutegravir plus lamivudine group or the 4 subjects in the dolutegravir plus TDF/FTC group who met the protocol-defined confirmed virologic withdrawal criteria across the pooled GEMINI-1 and GEMINI-2 trials had emergent INSTI- or NRTI-resistance substitutions.

Cross-Resistance

Dolutegravir: The susceptibility of dolutegravir was tested against 60 INSTI-resistant site-directed mutant HIV-1 viruses (28 with single substitutions and 32 with 2 or more substitutions). The single INSTI-resistance substitutions T66K, I151L, and S153Y conferred a >2-fold decrease in dolutegravir susceptibility (range: 2.3-fold to 3.6-fold from reference). Combinations of multiple substitutions T66K/L74M; E92Q/N155H; G140C/Q148R; G140S/Q148H, R or K; Q148R/N155H; T97A/G140S/Q148, and substitutions at E138/G140/Q148 showed a >2-fold decrease in dolutegravir susceptibility (range: 2.5-fold to 21-fold from reference).

Lamivudine: Cross-resistance conferred by the M184V or I RT has been observed within the NRTI class of antiretroviral agents. The M184V or I substitution confers resistance to emtricitabine and to abacavir, which selects M184V or I plus additional RT substitutions K65R, L74V, and Y115F. Zidovudine maintains its antiretroviral activities against lamivudine-resistant HIV-1. Abacavir and tenofovir maintain antiretroviral activity against lamivudine-resistant HIV-1 harboring only the M184V or I substitution.

13 NONCLINICAL TOXICOLOGY

13.1 Carcinogenesis, Mutagenesis, Impairment of Fertility

Carcinogenicity

Dolutegravir: Two-year carcinogenicity studies in mice and rats were conducted with dolutegravir. Mice were administered doses of up to 500 mg/kg, and rats were administered doses of up to 50 mg/kg. In mice, no significant increases in the incidence of drug-related neoplasms were observed at the highest doses tested, resulting in dolutegravir AUC exposures approximately 26 times higher than those in humans at the recommended dose. In rats, no increases in the incidence of drug-related neoplasms were observed at the highest dose tested, resulting in dolutegravir AUC exposures 17 times higher than those in humans at the recommended dose.

Lamivudine: Long-term carcinogenicity studies with lamivudine in mice and rats showed no evidence of carcinogenic potential at exposures up to 12 times (mice) and 57 times (rats) the human exposures at the recommended dose.

Mutagenicity

Dolutegravir: Dolutegravir was not genotoxic in the bacterial reverse mutation assay, in a mouse lymphoma assay, or in the in vivo rodent micronucleus assay.

Lamivudine: Lamivudine was mutagenic in an L5178Y mouse lymphoma assay and clastogenic in a cytogenetic assay using cultured human lymphocytes. Lamivudine was not mutagenic in a microbial mutagenicity assay, in an in vitro cell transformation assay, in a rat micronucleus test, in a rat bone marrow cytogenetic assay, and in an assay for unscheduled DNA synthesis in rat liver.

Impairment of Fertility

Dolutegravir or lamivudine did not affect male or female fertility in rats at doses associated with exposures approximately 44 or 112 times, respectively, higher than the exposures in humans at the recommended dose.

14 CLINICAL STUDIES

14.1 Clinical Trials in Adult Subjects

The efficacy of DOVATO is supported by data from 2 randomized, double-blind, controlled trials (GEMINI-1 [NCT02831673] and GEMINI-2 [NCT02831764]) in HIV-1-infected adults with no antiretroviral treatment history.

GEMINI-1 and GEMINI-2 are identical 148-week, Phase 3, randomized, multicenter, parallel-group, non-inferiority trials. A total of 1,433 HIV-1-infected adults with no antiretroviral treatment history received treatment in the trials. Subjects were enrolled with a screening plasma HIV-1 RNA of 1,000 to $\leq 500,000$ copies/mL and without evidence of major resistance-

associated mutations or evidence of HBV infection. Subjects were randomized to receive a 2-drug regimen of TIVICAY 50 mg plus EPIVIR 300 mg administered once daily or TIVICAY 50 mg plus fixed-dose TRUVADA administered once daily. The primary efficacy endpoint for each GEMINI trial was the proportion of subjects with plasma HIV-1 RNA <50 copies/mL at Week 48 (Snapshot algorithm) who were randomized and treated.

At baseline, in the pooled analysis, the median age of subjects was 33 years, 15% female, 68% white, 9% were CDC Stage 3 (AIDS), the median plasma HIV-1 RNA was 4.4 log₁₀ copies/mL, 20% had HIV-1 RNA >100,000 copies/mL, the median CD4⁺ cell count was 432 cells/mm³, and 8% had CD4⁺ cell count ≤200 cells/mm³; these characteristics were similar between trials and treatment arms within each trial.

The primary endpoint and other outcomes (including outcomes by key baseline covariates) for the pooled GEMINI-1 and GEMINI-2 trials are shown in Table 11. The results of the pooled analysis are consistent with the results from the individual trials, for which the primary endpoint (difference in proportion <50 copies/mL plasma HIV-1 RNA at Week 48 based on the Snapshot algorithm for TIVICAY plus EPIVIR versus TIVICAY plus TRUVADA) was met. The adjusted difference was -2.6 (95% CI: -6.7; 1.5) for GEMINI-1 and -0.7 (95% CI: -4.3; 2.9) for GEMINI-2 with a prespecified non-inferiority margin of 10%. At Week 48, no subjects had any detectable treatment-emergent substitutions associated with resistance to dolutegravir or NRTIs.

Table 11. Pooled Virologic Outcomes of Randomized Treatment of HIV-1–Infected Adults with No Antiretroviral Treatment History in GEMINI-1 and GEMINI-2 Trials at Week 48 (Snapshot Algorithm)

Virologic Outcomes	GEMINI-1 and GEMINI-2 Pooled Data	
	TIVICAY plus EPIVIR (n = 716)	TIVICAY plus TRUVADA (n = 717)
HIV-1 RNA <50 copies/mL	91%	93%
Treatment Difference^a	-1.7% (95% CI: -4.4%, 1.1%)	
Virologic nonresponse	3%	2%
<u>Reasons</u>		
Data in window not <50 copies/mL	1%	<1%
Discontinued for lack of efficacy	<1%	<1%
Discontinued for other reasons and ≥50 copies/mL	<1%	<1%
Change in ART	<1%	<1%
No virologic data at Week 48 window	6%	5%
<u>Reasons</u>		
Discontinued trial due to adverse event or death	1%	2%

Discontinued trial for other reasons	4%	3%
Missing data during window but on trial	<1%	0%
Proportion (%) of Subjects with HIV-1 RNA <50 copies/mL by Baseline Category		
	% (n/N)	% (n/N)
Plasma Viral Load (copies/mL)		
≤100,000	91% (526/576)	94% (531/564)
>100,000	92% (129/140)	90% (138/153)
CD4⁺ (cells/mm³)		
≤200	79% (50/63)	93% (51/55)
>200	93% (605/653)	93% (618/662)
Gender		
Male	92% (555/603)	94% (580/619)
Female	88% (100/113)	91% (89/98)
Race		
White	93% (447/480)	95% (471/497)
African-American/African Heritage	84% (83/99)	84% (64/76)
Asian	94% (67/71)	94% (68/72)
Other	88% (58/66)	92% (66/72)
Ethnicity		
Hispanic or Latino	90% (193/215)	93% (216/232)
Not Hispanic or Latino	92% (462/501)	93% (453/485)
Age (years)		
<50	92% (597/651)	94% (597/637)
≥50	89% (58/65)	90% (72/80)

^a Based on Cochran–Mantel–Haenszel-stratified analysis adjusting for the following baseline stratification factors: plasma HIV-1 RNA (≤100,000 copies/mL versus >100,000 copies/mL) and CD4⁺ cell count (≤200 cells/mm³ versus >200 cells/mm³). Pooled analysis also stratified by trial. Assessed using a non-inferiority margin of 10%.

Virologic outcomes by baseline CD4⁺ (cells/mm³) in GEMINI-1 and GEMINI-2 are shown in Table 12. In both trials, lower response rates (HIV-1 RNA <50 copies/mL) were observed in subjects with baseline CD4⁺ ≤200 cells/mm³. These findings were seen irrespective of baseline plasma HIV-1 RNA.

Table 12. Virologic Outcomes by Baseline CD4⁺ in GEMINI-1 and GEMINI-2 Trials at Week 48 (Snapshot Algorithm)

	GEMINI-1		GEMINI-2	
	TIVICAY plus EPIVIR (n = 356)	TIVICAY plus TRUVADA (n = 358)	TIVICAY plus EPIVIR (n = 360)	TIVICAY plus TRUVADA (n = 359)

Proportion (%) of Subjects with HIV-1 RNA <50 copies/mL				
Baseline CD4 ⁺ (cells/mm ³)				
≤200	81% (25/31) ^a	90% (26/29)	78% (25/32) ^a	96% (25/26)
>200	91% (295/325)	93% (306/329)	95% (310/328)	94% (312/333)

^a With the exception of one subject treated with TIVICAY plus EPIVIR in GEMINI-1 who was withdrawn due to confirmed loss of virologic response, none of the subjects treated with TIVICAY plus EPIVIR who did not have HIV-1 RNA <50 copies/mL at Week 48 (based on Snapshot Algorithm) were discontinued for treatment-related reasons by Week 48. A subject in GEMINI-1 whose last HIV-1 RNA was 64,366 copies/mL was lost to follow-up.

The adjusted mean change from baseline in CD4⁺ cell count based on the pooled analysis at Week 48 was 224 cells/mm³ for the group receiving TIVICAY plus EPIVIR and 217 cells/mm³ for the group receiving TIVICAY plus TRUVADA.

16 HOW SUPPLIED/STORAGE AND HANDLING

Each DOVATO tablet contains 50 mg of dolutegravir as dolutegravir sodium and 300 mg lamivudine and is an oval, biconvex, white, film-coated tablet, debossed with “SV 137” on one face.

Bottle of 30 tablets with child-resistant closure NDC 49702-246-13.

Store below 30°C (86°F).

17 PATIENT COUNSELING INFORMATION

Advise the patient to read the FDA-approved patient labeling (Patient Information).

Emergence of Lamivudine-Resistant HBV in Hepatitis B Co-infection

Advise all patients with HIV-1 to be tested for the presence of HBV prior to or when initiating DOVATO. Advise patients co-infected with HIV-1 and HBV that emergence of HBV variants associated with resistance to lamivudine has been reported in HIV-1–infected subjects who have received lamivudine-containing antiretroviral regimens. Advise patients co-infected with HIV-1 and HBV who are being treated with DOVATO to discuss with their healthcare provider if additional treatment should be considered for appropriate treatment of chronic HBV [*see Warnings and Precautions (5.1)*].

Severe Acute Exacerbations of Hepatitis in Patients with HBV Co-infection

Advise all patients with HIV-1 to be tested for the presence of HBV prior to or when initiating DOVATO. Advise patients co-infected with HIV-1 and HBV that worsening of liver disease has occurred in some cases when treatment with lamivudine was discontinued. Advise patients to discuss any changes in regimen with their healthcare provider [*see Warnings and Precautions (5.1)*].

Hypersensitivity Reactions

Advise patients to immediately contact their healthcare provider if they develop a rash. Instruct patients to immediately stop taking DOVATO and seek medical attention if they develop a rash associated with any of the following symptoms, as it may be a sign of a more serious reaction such as severe hypersensitivity: fever; generally ill feeling; extreme tiredness; muscle or joint aches; blisters or peeling of the skin; oral blisters or lesions; eye inflammation; facial swelling; swelling of the eyes, lips, tongue, or mouth; breathing difficulty; and/or signs and symptoms of liver problems (e.g., yellowing of the skin or whites of the eyes; dark or tea-colored urine; pale-colored stools or bowel movements; nausea; vomiting; loss of appetite; or pain, aching, or sensitivity on the right side below the ribs). Advise patients that if hypersensitivity occurs, they will be closely monitored, laboratory tests will be ordered, and appropriate therapy will be initiated [*see Warnings and Precautions (5.2)*].

Hepatotoxicity

Inform patients that hepatotoxicity has been reported with dolutegravir, a component of DOVATO [*see Warnings and Precautions (5.3), Adverse Reactions (6.1)*]. Inform patients that monitoring for hepatotoxicity during therapy with DOVATO is recommended.

Embryo-Fetal Toxicity

Counsel individuals of childbearing potential to consider an alternative treatment to DOVATO at the time of conception through the first trimester of pregnancy. Advise individuals of childbearing potential to contact their healthcare provider if they plan to become pregnant, become pregnant, or if pregnancy is suspected during treatment with DOVATO [*see Warnings and Precaution (5.4), Use in Specific Populations (8.1, 8.3)*].

Advise individuals of childbearing potential taking DOVATO to consistently use effective contraception [*see Warnings and Precautions (5.4), Use in Specific Populations (8.1, 8.3)*].

Lactic Acidosis/Hepatomegaly with Steatosis

Inform patients that some HIV medicines, including DOVATO, can cause a rare, but serious condition called lactic acidosis with liver enlargement (hepatomegaly) [*see Warnings and Precautions (5.5)*].

Drug Interactions

DOVATO may interact with many drugs; therefore, advise patients to report to their healthcare provider the use of any other prescription or nonprescription medication or herbal products, including St. John's wort [*see Contraindications (4), Warnings and Precautions (5.6), Drug Interactions (7)*].

Immune Reconstitution Syndrome

Advise patients to inform their healthcare provider immediately of any signs and symptoms of infection as inflammation from previous infection may occur soon after combination antiretroviral therapy, including DOVATO, is started [see *Warnings and Precautions (5.7)*].

Pregnancy Registry

Inform patients that there is an antiretroviral pregnancy registry to monitor fetal outcomes in those exposed to DOVATO during pregnancy [see *Use in Specific Populations (8.1)*].

Lactation

Instruct mothers with HIV-1 infection not to breastfeed because HIV-1 can be passed to the baby in the breast milk [see *Use in Specific Populations (8.2)*].

Missed Dose

Instruct patients that if they miss a dose of DOVATO, to take it as soon as they remember. Advise patients not to double their next dose or take more than the prescribed dose [see *Dosage and Administration (2)*].

DOVATO, EPIVIR, TIVICAY, and TRIUMEQ are trademarks owned by or licensed to the ViiV Healthcare group of companies.

The other brand listed is a trademark owned by or licensed to its respective owner and is not owned by or licensed to the ViiV Healthcare group of companies. The maker of this brand is not affiliated with and does not endorse the ViiV Healthcare group of companies or its products.

Manufactured for:



ViiV Healthcare
Research Triangle Park, NC 27709

by:

GlaxoSmithKline
Research Triangle Park, NC 27709

©2020 ViiV Healthcare group of companies or its licensor.

DVT:xPI

PHARMACIST-DETACH HERE AND GIVE INSTRUCTIONS TO PATIENT

PATIENT INFORMATION
DOVATO (doe VAH toe)
(dolutegravir and lamivudine)
tablets

What is the most important information I should know about DOVATO?

If you have both human immunodeficiency virus-1 (HIV-1) and hepatitis B virus (HBV) infection, DOVATO can cause serious side effects, including:

- **Resistant HBV infection.** Your healthcare provider will test you for HBV infection before you start treatment with DOVATO. If you have HIV-1 and hepatitis B, the hepatitis B virus can change (mutate) during your treatment with DOVATO and become harder to treat (resistant). It is not known if DOVATO is safe and effective in people who have HIV-1 and HBV infection.
- **Worsening of HBV infection.** If you have HIV-1 and HBV infection, your HBV may get worse (flare-up) if you stop taking DOVATO. A “flare-up” is when your HBV infection suddenly returns in a worse way than before. Worsening liver disease can be serious and may lead to death.
 - Do not run out of DOVATO. Refill your prescription or talk to your healthcare provider before your DOVATO is all gone.
 - **Do not stop DOVATO without first talking to your healthcare provider.** If you stop taking DOVATO, your healthcare provider will need to check your health often and do blood tests regularly for several months to check your liver.

What is DOVATO?

DOVATO is a prescription medicine that is used without other antiretroviral medicines to treat HIV-1 infection in adults:

- who have not received antiretroviral medicines in the past, **and**
- without known resistance to the medicines dolutegravir or lamivudine.

HIV-1 is the virus that causes Acquired Immune Deficiency Syndrome (AIDS).

It is not known if DOVATO is safe and effective in children.

Do not take DOVATO if you:

- have ever had an allergic reaction to a medicine that contains dolutegravir or lamivudine.
- take dofetilide.

Before you take DOVATO, tell your healthcare provider about all of your medical conditions, including if you:

- have or have had liver problems, including hepatitis B or C infection.
- have kidney problems.
- are pregnant or plan to become pregnant. One of the medicines in DOVATO (dolutegravir) may harm your unborn baby.
 - Your healthcare provider may prescribe a different medicine than DOVATO if you are planning to become pregnant or if pregnancy is confirmed in the first 12 weeks of pregnancy.

- If you can become pregnant, your healthcare provider will perform a pregnancy test before you start treatment with DOVATO.
- If you can become pregnant, you should consistently use effective birth control (contraception) during treatment with DOVATO.
- Tell your healthcare provider right away if you are planning to become pregnant, you become pregnant, or think you may be pregnant during treatment with DOVATO.

Pregnancy Registry. There is a pregnancy registry for people who take antiretroviral medicines, including DOVATO, during pregnancy. The purpose of this registry is to collect information about the health of you and your baby. Talk with your healthcare provider about how you can take part in this registry.

- are breastfeeding or plan to breastfeed. **Do not breastfeed if you take DOVATO.**
 - You should not breastfeed if you have HIV-1 because of the risk of passing HIV-1 to your baby.
 - One of the medicines in DOVATO (lamivudine) passes into your breast milk.
 - Talk with your healthcare provider about the best way to feed your baby.

Tell your healthcare provider about all the medicines you take, including prescription and over-the-counter medicines, vitamins, and herbal supplements.

Some medicines interact with DOVATO. Keep a list of your medicines and show it to your healthcare provider and pharmacist when you get a new medicine.

- You can ask your healthcare provider or pharmacist for a list of medicines that interact with DOVATO.
- **Do not start taking a new medicine without telling your healthcare provider.** Your healthcare provider can tell you if it is safe to take DOVATO with other medicines.

How should I take DOVATO?

- **Take DOVATO 1 time a day exactly as your healthcare provider tells you.**
- Take DOVATO with or without food.
- Do not change your dose or stop taking DOVATO without talking with your healthcare provider.
- If you take antacids, laxatives, or other medicines that contain aluminum, magnesium, or buffered medicines, DOVATO should be taken at least 2 hours before or 6 hours after you take these medicines.
- If you need to take iron or calcium supplements, including multivitamins that contain iron or calcium, by mouth during treatment with DOVATO:
 - You may take these supplements at the same time that you take DOVATO with food.
 - If you do not take these supplements with DOVATO and food, take DOVATO at least 2 hours before or 6 hours after you take these supplements.
- Do not miss a dose of DOVATO. If you miss a dose of DOVATO, take it as soon as you remember. Do not take 2 doses at the same time or take more than your prescribed dose.
- Stay under the care of a healthcare provider during treatment with DOVATO.
- Do not run out of DOVATO. The virus in your blood may increase and the virus may become harder to treat. When your supply starts to run low, get more from your healthcare provider or pharmacy.
- If you take too much DOVATO, call your healthcare provider or go to the nearest hospital emergency room right away.

What are the possible side effects of DOVATO?

DOVATO can cause serious side effects, including:

- See **“What is the most important information I should know about DOVATO?”**

- **Allergic reactions. Call your healthcare provider right away if you develop a rash with DOVATO. Stop taking DOVATO and get medical help right away if you develop a rash with any of the following signs or symptoms:**
 - fever
 - generally ill feeling
 - tiredness
 - muscle or joint aches
 - blisters or sores in mouth
 - blisters or peeling of the skin
 - redness or swelling of the eyes
 - swelling of the mouth, face, lips, or tongue
 - problems breathing
- **Liver problems.** People with a history of hepatitis B or C virus may have an increased risk of developing new or worsening changes in certain liver tests during treatment with DOVATO. Liver problems, including liver failure, have also happened in people without a history of liver disease or other risk factors. Your healthcare provider may do blood tests to check your liver.
Tell your healthcare provider right away if you get any of the following signs or symptoms of liver problems:
 - your skin or the white part of your eyes turns yellow (jaundice)
 - dark or “tea-colored” urine
 - light-colored stools (bowel movements)
 - nausea or vomiting
 - loss of appetite
 - pain, aching, or tenderness on the right side of your stomach area
- **Too much lactic acid in your blood (lactic acidosis).** Lactic acidosis is a serious medical emergency that can lead to death.
Tell your healthcare provider right away if you get any of the following symptoms that could be signs of lactic acidosis:
 - feel very weak or tired
 - unusual (not normal) muscle pain
 - trouble breathing
 - stomach pain with nausea and vomiting
 - feel cold, especially in your arms and legs
 - feel dizzy or light-headed
 - have a fast or irregular heartbeat
- **Lactic acidosis can also lead to severe liver problems,** which can lead to death. Your liver may become large (hepatomegaly) and you may develop fat in your liver (steatosis). **Tell your healthcare provider right away if you get any of the signs or symptoms of liver problems which are listed above under “Liver problems”. You may be more likely to get lactic acidosis or severe liver problems if you are female or very overweight (obese).**
- **Changes in your immune system (Immune Reconstitution Syndrome)** can happen when you start taking HIV-1 medicines. Your immune system may get stronger and begin to fight infections that have been hidden in your body for a long time. Tell your healthcare provider right away if you start having new symptoms after you start taking DOVATO.
- **The most common side effects of DOVATO include:**
 - headache
 - diarrhea
 - nausea
 - trouble sleeping
 - tiredness

These are not all the possible side effects of DOVATO. Call your doctor for medical advice about side effects. You may report side effects to FDA at 1-800-FDA-1088.

How should I store DOVATO?

- Store DOVATO below 86°F (30°C).
- DOVATO comes in a child-resistant package.

Keep DOVATO and all medicines out of the reach of children.

General information about the safe and effective use of DOVATO.

Medicines are sometimes prescribed for purposes other than those listed in a Patient Information leaflet. Do not use DOVATO for a condition for which it was not prescribed. Do not give DOVATO to other people, even if they have the same symptoms that you have. It may harm them. You can ask your healthcare provider or pharmacist for information about DOVATO that is written for health professionals.

What are the ingredients in DOVATO?

Active ingredients: dolutegravir and lamivudine.

Inactive ingredients: magnesium stearate, mannitol, microcrystalline cellulose, povidone K29/32, sodium starch glycolate, sodium stearyl fumarate.

The tablet film-coating contains: hypromellose, polyethylene glycol, titanium dioxide.

Manufactured for:



ViiV Healthcare

Research Triangle Park, NC 27709

by:

GlaxoSmithKline

Research Triangle Park, NC 27709

Trademark is owned by or licensed to the ViiV Healthcare group of companies.

©2020 ViiV Healthcare group of companies or its licensor.

DVT:xPIL

For more information go to www.DOVATO.com or call 1-877-844-8872.

This Patient Information has been approved by the U.S. Food and Drug Administration.

Revised: 03/2020