

## HIGHLIGHTS OF PRESCRIBING INFORMATION

These highlights do not include all the information needed to use LUPKYNIS® safely and effectively. See full prescribing information for LUPKYNIS.

LUPKYNIS (voclosporin) capsules, for oral use  
Initial U.S. Approval: 2021

**WARNING: MALIGNANCIES and SERIOUS INFECTIONS**  
See full prescribing information for complete boxed warning.

**Increased risk for developing serious infections and malignancies with LUPKYNIS or other immunosuppressants that may lead to hospitalization or death. (5.1, 5.2)**

### RECENT MAJOR CHANGES

Dosage and Administration, Dosage Recommendations (2.3) 4/2024  
Warnings and Precautions, Nephrotoxicity (5.3) 4/2024

### INDICATIONS AND USAGE

LUPKYNIS is a calcineurin-inhibitor immunosuppressant indicated in combination with a background immunosuppressive therapy regimen for the treatment of adult patients with active lupus nephritis (LN). (1, 14)

Limitations of Use: Safety and efficacy of LUPKYNIS have not been established in combination with cyclophosphamide. Use of LUPKYNIS is not recommended in this situation.

### DOSAGE AND ADMINISTRATION

#### Administration:

- LUPKYNIS must be swallowed whole on an empty stomach. (2.1)
- Administer consistently as close to a 12-hour schedule as possible, and with at least 8 hours between doses. (2.1)
- If a dose is missed, instruct the patient to take it as soon as possible within 4 hours after missing the dose. Beyond the 4-hour time frame, instruct the patient to wait until the usual scheduled time to take the next regular dose. Instruct the patient not to double the next dose. (2.1)
- Instruct patients to avoid eating grapefruit or drinking grapefruit juice while taking LUPKYNIS. (2.1, 7.1)

#### Dosage Recommendations:

- Before initiating LUPKYNIS, establish an accurate baseline estimated glomerular filtration rate (eGFR) and check blood pressure (BP).
  - Use of LUPKYNIS is not recommended in patients with a baseline eGFR  $\leq 45$  mL/min/1.73 m<sup>2</sup> unless the benefit exceeds the risk; these patients may be at increased risk for acute and/or chronic nephrotoxicity. (2.2, 5.3)
  - Do not initiate LUPKYNIS in patients with baseline BP >165/105 mmHg or with hypertensive emergency. (2.2, 5.4)
- Recommended starting dose: 23.7 mg orally, twice a day. (2.3)
- Use LUPKYNIS in combination with mycophenolate mofetil (MMF) and corticosteroids. (2.3)
- Modify the LUPKYNIS dose based on eGFR (2.3, 5.3):
  - Assess eGFR every two weeks for the first month, every four weeks through the first year, and quarterly thereafter.
  - If eGFR <60 mL/min/1.73 m<sup>2</sup> and reduced from baseline by >20% and <30%, reduce the dose by 7.9 mg twice a day. Re-assess eGFR within two weeks; if eGFR is still reduced from baseline by >20%, reduce the dose again by 7.9 mg twice a day.
  - If eGFR <60 mL/min/1.73 m<sup>2</sup> and reduced from baseline by  $\geq 30\%$ , discontinue LUPKYNIS. Re-assess eGFR within two weeks; consider re-initiating LUPKYNIS at a lower dose (7.9 mg twice a day) only if eGFR has returned to  $\geq 80\%$  of baseline.
  - For patients that had a decrease in dose due to eGFR, consider increasing the dose by 7.9 mg twice a day for each eGFR measurement that is  $\geq 80\%$  of baseline; do not exceed the starting dose.
- Monitor blood pressure every two weeks for the first month after initiating LUPKYNIS, and as clinically indicated thereafter. For patients with BP >165/105 mmHg or with hypertensive emergency, discontinue LUPKYNIS and initiate antihypertensive therapy. (2.3, 5.4)

- If the patient has not experienced therapeutic benefit by 24 weeks, consider discontinuation of LUPKYNIS. (2.3)

#### Dosage Adjustments:

- Patients with severe renal impairment: the recommended dose is 15.8 mg twice daily. (2.4, 8.6)
- Patients with mild and moderate hepatic impairment: the recommended dose is 15.8 mg twice daily. (2.4, 8.7)

### DOSAGE FORMS AND STRENGTHS

Capsules: 7.9 mg (3)

### CONTRAINDICATIONS

- Patients concomitantly using strong CYP3A4 inhibitors (e.g., ketoconazole, itraconazole, clarithromycin). (4)
- Known serious or severe hypersensitivity reaction to LUPKYNIS or any of its excipients. (4)

### WARNINGS AND PRECAUTIONS

- Nephrotoxicity (acute and/or chronic): May occur due to LUPKYNIS or concomitant nephrotoxic drugs. Monitor renal function; consider dosage reduction. (5.3)
- Hypertension: May require antihypertensive therapy; monitor relevant drug interactions. (5.4)
- Neurotoxicity: Including risk of posterior reversible encephalopathy syndrome (PRES); monitor for neurologic abnormalities; reduce dosage or discontinue LUPKYNIS. (5.5)
- Hyperkalemia: Risk may be increased with other agents associated with hyperkalemia; monitor serum potassium levels. (5.6)
- QT Prolongation: Consider obtaining electrocardiograms and monitoring electrolytes in patients at high risk. (5.7)
- Immunizations: Avoid live vaccines. (5.8)
- Pure Red Cell Aplasia: Consider discontinuation. (5.9)

### ADVERSE REACTIONS

The most commonly reported adverse reactions ( $\geq 3\%$ ) were: glomerular filtration rate decreased, hypertension, diarrhea, headache, anemia, cough, urinary tract infection, abdominal pain upper, dyspepsia, alopecia, renal impairment, abdominal pain, mouth ulceration, fatigue, tremor, acute kidney injury, and decreased appetite. (6.1)

To report SUSPECTED ADVERSE REACTIONS, contact Aurinia Pharmaceuticals at 1-833-672-0028 or FDA at 1-800-FDA-1088 or [www.fda.gov/medwatch](http://www.fda.gov/medwatch).

### DRUG INTERACTIONS

- Moderate CYP3A4 inhibitors: Reduce LUPKYNIS daily dosage to 15.8 mg in the morning and 7.9 mg in the evening. (2.5, 7.1, 12.3)
- Strong and moderate CYP3A4 inducers: Avoid co-administration. (7.1, 12.3)
- Certain P-gp substrates: Reduce dosage of certain P-gp substrates with a narrow therapeutic window when co-administered with LUPKYNIS. (7.2, 12.3)

### USE IN SPECIFIC POPULATIONS

- Pregnancy: May cause fetal harm. (8.1)
- Renal Impairment: Use of LUPKYNIS is not recommended in patients with a baseline eGFR  $\leq 45$  mL/min/1.73 m<sup>2</sup> unless the benefit exceeds the risk. If used in patients with severe renal impairment at baseline, LUPKYNIS should be used at a reduced dose. (2.4, 8.6)
- Hepatic Impairment:
  - Mild and moderate hepatic impairment: Dose reduction is required.
  - Severe hepatic impairment: Avoid LUPKYNIS use. (2.4, 8.7)

See 17 for PATIENT COUNSELING INFORMATION and Medication Guide.

Revised: 4/2024

---

**FULL PRESCRIBING INFORMATION: CONTENTS\***

**WARNING: MALIGNANCIES and SERIOUS INFECTIONS**

**1 INDICATIONS AND USAGE**

**2 DOSAGE AND ADMINISTRATION**

- 2.1 Important Administration Instructions
- 2.2 Prior to Initiating LUPKYNIS Therapy
- 2.3 Dosage Recommendations
- 2.4 Recommended Dosage in Patients with Hepatic Impairment
- 2.5 Dosage Adjustments due to Drug Interactions

**3 DOSAGE FORMS AND STRENGTHS**

**4 CONTRAINDICATIONS**

**5 WARNINGS AND PRECAUTIONS**

- 5.1 Lymphoma and Other Malignancies
- 5.2 Serious Infections
- 5.3 Nephrotoxicity
- 5.4 Hypertension
- 5.5 Neurotoxicity
- 5.6 Hyperkalemia
- 5.7 QTc Prolongation
- 5.8 Immunizations
- 5.9 Pure Red Cell Aplasia

**6 ADVERSE REACTIONS**

- 6.1 Clinical Trials Experience

**7 DRUG INTERACTIONS**

- 7.1 Effect of Other Drugs on LUPKYNIS
- 7.2 Effect of LUPKYNIS on Other Drugs

**8 USE IN SPECIFIC POPULATIONS**

- 8.1 Pregnancy
- 8.2 Lactation
- 8.3 Females and Males of Reproductive Potential
- 8.4 Pediatric Use
- 8.5 Geriatric Use

- 8.6 Renal Impairment
- 8.7 Hepatic Impairment

**10 OVERDOSAGE**

**11 DESCRIPTION**

**12 CLINICAL PHARMACOLOGY**

- 12.1 Mechanism of Action
- 12.2 Pharmacodynamics
- 12.3 Pharmacokinetics

**13 NONCLINICAL TOXICOLOGY**

- 13.1 Carcinogenesis, Mutagenesis, Impairment of Fertility

**14 CLINICAL STUDIES**

**16 HOW SUPPLIED/STORAGE AND HANDLING**

**17 PATIENT COUNSELING INFORMATION**

\* Sections or subsections omitted from the full prescribing information are not listed.

## FULL PRESCRIBING INFORMATION

### WARNING: MALIGNANCIES and SERIOUS INFECTIONS

Increased risk for developing malignancies and serious infections with LUPKYNIS or other immunosuppressants that may lead to hospitalization or death [see [Warnings and Precautions \(5.1, 5.2\)](#)].

## 1 INDICATIONS AND USAGE

LUPKYNIS is indicated in combination with a background immunosuppressive therapy regimen [see [Clinical Studies \(14\)](#)] for the treatment of adult patients with active lupus nephritis (LN).

Limitations of Use: Safety and efficacy of LUPKYNIS have not been established in combination with cyclophosphamide. Use of LUPKYNIS is not recommended in this situation.

## 2 DOSAGE AND ADMINISTRATION

### 2.1 Important Administration Instructions

- LUPKYNIS capsules must be swallowed whole and must not be opened, crushed, or divided.
- LUPKYNIS should be taken on an empty stomach consistently as close to a 12-hour schedule as possible, and with a minimum of 8 hours between doses.
- If a dose is missed, instruct the patient to take it as soon as possible within 4 hours after missing the dose. Beyond the 4-hour time frame, instruct the patient to wait until the usual scheduled time to take the next regular dose. Instruct the patient not to double the next dose.
- Instruct patients to avoid eating grapefruit or drinking grapefruit juice while taking LUPKYNIS [see [Drug Interactions \(7.1\)](#)].

### 2.2 Prior to Initiating LUPKYNIS Therapy

Establish an accurate baseline estimated glomerular filtration rate (eGFR). Use of LUPKYNIS is not recommended in patients with a baseline eGFR  $\leq 45$  mL/min/1.73 m<sup>2</sup> unless the benefit exceeds the risk; these patients may be at increased risk for acute and/or chronic nephrotoxicity [see [Warnings and Precautions \(5.3\)](#)].

Check blood pressure (BP) at baseline. Do not initiate LUPKYNIS in patients with BP >165/105 mmHg or with hypertensive emergency [see [Warnings and Precautions \(5.4\)](#)].

### 2.3 Dosage Recommendations

The recommended starting dose of LUPKYNIS is 23.7 mg twice a day.

Use LUPKYNIS in combination with mycophenolate mofetil (MMF) and corticosteroids [see [Clinical Studies \(14\)](#)].

Safety and efficacy of LUPKYNIS have not been established in combination with cyclophosphamide. Use of LUPKYNIS is not recommended in this situation.

- Assess eGFR every two weeks for the first month, every four weeks through the first year and quarterly thereafter.

Dosage of LUPKYNIS is based on the patient's eGFR. Modify LUPKYNIS dosage based on eGFR [see [Warnings and Precautions \(5.3\)](#)]:

- If eGFR <60 mL/min/1.73 m<sup>2</sup> and reduced from baseline by >20% and <30%, reduce the dose by 7.9 mg twice a day. Re-assess eGFR within two weeks; if eGFR is still reduced from baseline by >20%, reduce the dose again by 7.9 mg twice a day.
- If eGFR <60 mL/min/1.73 m<sup>2</sup> and reduced from baseline by ≥30%, discontinue LUPKYNIS. Re-assess eGFR within two weeks; consider re-initiating LUPKYNIS at a lower dose (7.9 mg twice a day) only if eGFR has returned to ≥80% of baseline.
- For patients that had a decrease in dose due to eGFR, consider increasing the dose by 7.9 mg twice a day for each eGFR measurement that is ≥80% of baseline; do not exceed the starting dose.

Monitor blood pressure every two weeks for the first month after initiating LUPKYNIS, and as clinically indicated thereafter [see [Warnings and Precautions \(5.4\)](#)]. For patients with BP >165/105 mmHg or with hypertensive emergency, discontinue LUPKYNIS and initiate antihypertensive therapy.

If the patient does not experience therapeutic benefit by 24 weeks, consider discontinuation of LUPKYNIS.

## 2.4 Dosage Recommendations in Patients with Renal and Hepatic Impairment

Use of LUPKYNIS is not recommended in patients with a baseline eGFR ≤45 mL/min/1.73 m<sup>2</sup> unless the benefit exceeds the risk; LUPKYNIS has not been studied in patients with a baseline eGFR ≤45 mL/min/1.73 m<sup>2</sup>. If used in patients with severe renal impairment at baseline, the recommended starting dose is 15.8 mg twice a day [see [Use in Specific Populations \(8.6\)](#) and [Clinical Pharmacology \(12.3\)](#)].

In patients with mild and moderate hepatic impairment (Child-Pugh A and Child-Pugh B), the recommended dose is 15.8 mg twice daily. LUPKYNIS is not recommended to be used in patients with severe hepatic impairment (Child-Pugh C) [see [Use in Specific Populations \(8.7\)](#) and [Clinical Pharmacology \(12.3\)](#)].

## 2.5 Dosage Adjustments due to Drug Interactions

When co-administering LUPKYNIS with moderate CYP3A4 inhibitors (e.g., verapamil, fluconazole, diltiazem), reduce LUPKYNIS daily dosage to 15.8 mg in the morning and 7.9 mg in the evening. No dose adjustment of LUPKYNIS is recommended when LUPKYNIS is co-administered with mild CYP3A4 inhibitors [see [Drug Interactions \(7.1\)](#) and [Clinical Pharmacology \(12.3\)](#)].

## 3 DOSAGE FORMS AND STRENGTHS

Capsules: 7.9 mg (voclosporin) oval, pink/orange in color, imprinted on one side with VCS in white ink.

## 4 CONTRAINDICATIONS

LUPKYNIS is contraindicated in:

- Patients concomitantly using strong CYP3A4 inhibitors (e.g., ketoconazole, itraconazole, clarithromycin) because these medications can significantly increase exposure to LUPKYNIS which may increase the risk of acute and/or chronic nephrotoxicity [see [Warnings and Precautions \(5.3\)](#), [Drug Interactions \(7.1\)](#), and [Pharmacokinetics \(12.3\)](#)].
- Patients who have had a known serious or severe hypersensitivity reaction to LUPKYNIS or any of its excipients.

## 5 WARNINGS AND PRECAUTIONS

### 5.1 Lymphoma and Other Malignancies

Immunosuppressants, including LUPKYNIS, increase the risk of developing lymphomas and other malignancies, particularly of the skin. The risk appears to be related to the intensity and duration of immunosuppression rather than to the use of any specific agent. Examine patients for skin changes and advise to avoid or limit sun exposure and to avoid artificial UV light (tanning beds, sun lamps) by wearing protective clothing and using a broad spectrum sunscreen with a high protection factor (SPF 30 or higher).

### 5.2 Serious Infections

Immunosuppressants, including LUPKYNIS, increase the risk of developing bacterial, viral, fungal, and protozoal infections, including opportunistic infections. These infections may lead to serious, including fatal, outcomes. Viral infections reported include cytomegalovirus and herpes zoster infections.

Monitor for the development of infection. Consider the benefits and risks for the individual patient; use the lowest effective dose needed to maintain response.

### 5.3 Nephrotoxicity

LUPKYNIS, like other calcineurin inhibitors, can cause acute and/or chronic nephrotoxicity. Nephrotoxicity was reported in clinical trials [see [Adverse Reactions \(6.1\)](#)]. Monitor eGFR regularly during treatment, and consider dose reduction or discontinuation in patients with decreases in eGFR from baseline [see [Dosage and Administration \(2.3\)](#)]; persistent decrease of eGFR should be evaluated for chronic calcineurin-inhibitor nephrotoxicity.

Consider the risks and benefits of LUPKYNIS treatment in light of the patient's treatment response and risk of worsening nephrotoxicity, including co-administration with drugs associated with nephrotoxicity. The risk for acute and/or chronic nephrotoxicity is increased when LUPKYNIS is concomitantly administered with drugs associated with nephrotoxicity.

### 5.4 Hypertension

Hypertension is a common adverse reaction of LUPKYNIS therapy and may require antihypertensive therapy [see [Adverse Reactions \(6.1\)](#)]. Some antihypertensive drugs can increase the risk for hyperkalemia [see [Warnings and Precautions \(5.6\)](#)]. Certain calcium-channel blocking agents (verapamil and diltiazem) may increase voclosporin blood concentrations and require dosage reduction of LUPKYNIS [see [Dosage and Administration \(2.5\)](#) and [Drug Interactions \(7.2\)](#)].

Monitor blood pressure regularly during treatment and treat new-onset hypertension and exacerbations of pre-existing hypertension. If a patient experiences increases in blood pressure that cannot be managed with dose reduction of LUPKYNIS or other appropriate medical intervention, consider discontinuation of LUPKYNIS [see *Dosage and Administration* (2.3)].

### 5.5 Neurotoxicity

LUPKYNIS, like other calcineurin inhibitors, may cause a spectrum of neurotoxicities [see *Adverse Reactions* (6.1)]. The most severe neurotoxicities include posterior reversible encephalopathy syndrome (PRES), delirium, seizure, and coma; others include tremors, paresthesias, headache, mental status changes, and changes in motor and sensory functions. Monitor for neurologic symptoms and consider dosage reduction or discontinuation of LUPKYNIS if neurotoxicity occurs.

### 5.6 Hyperkalemia

Hyperkalemia, which may be serious and require treatment, has been reported with calcineurin inhibitors including LUPKYNIS [see *Adverse Reactions* (6.1)]. Concomitant use of agents associated with hyperkalemia (e.g., potassium-sparing diuretics, ACE inhibitors, angiotensin receptor blockers) may increase the risk for hyperkalemia. Monitor serum potassium levels periodically during treatment.

### 5.7 QTc Prolongation

LUPKYNIS prolongs the QTc interval in a dose-dependent manner after single dose administration at a dose higher than the recommended lupus nephritis therapeutic dose [see *Clinical Pharmacology* (12.2)]. The use of LUPKYNIS in combination with other drugs that are known to prolong QTc may result in clinically significant QT prolongation.

Certain circumstances may increase the risk of the occurrence of torsade de pointes and/or sudden death in association with the use of drugs that prolong the QTc interval, including (1) bradycardia; (2) hypokalemia or hypomagnesemia; (3) concomitant use of other drugs that prolong the QTc interval; and (4) presence of congenital prolongation of the QT interval.

### 5.8 Immunizations

Avoid the use of live attenuated vaccines during treatment with LUPKYNIS (e.g., intranasal influenza, measles, mumps, rubella, oral polio, BCG, yellow fever, varicella, and TY21a typhoid vaccines).

Inactivated vaccines noted to be safe for administration may not be sufficiently immunogenic during treatment with LUPKYNIS.

### 5.9 Pure Red Cell Aplasia

Cases of pure red cell aplasia (PRCA) have been reported in patients treated with another calcineurin-inhibitor immunosuppressant. All of these patients reported risk factors for PRCA such as parvovirus B19 infection, underlying disease, or concomitant medications associated with PRCA. A mechanism for calcineurin-inhibitor-induced PRCA has not been elucidated. If PRCA is diagnosed, consider discontinuation of LUPKYNIS.

## 6 ADVERSE REACTIONS

The following clinically significant adverse reactions are described elsewhere in the labeling:

- Lymphoma and Other Malignancies [see [Warnings and Precautions \(5.1\)](#)]
- Serious Infections [see [Warnings and Precautions \(5.2\)](#)]
- Nephrotoxicity due to LUPKYNIS and Drug Interactions [see [Warnings and Precautions \(5.3\)](#)]
- Hypertension [see [Warnings and Precautions \(5.4\)](#)]
- Neurotoxicity [see [Warnings and Precautions \(5.5\)](#)]
- Hyperkalemia [see [Warnings and Precautions \(5.6\)](#)]
- QTc Prolongation [see [Warnings and Precautions \(5.7\)](#)]
- Immunizations [see [Warnings and Precautions \(5.8\)](#)]
- Pure Red Cell Aplasia [see [Warnings and Precautions \(5.9\)](#)]

## 6.1 Clinical Trials Experience

Because clinical trials are conducted under widely varying conditions, adverse reaction rates observed in the clinical trials of a drug cannot be directly compared to rates in the clinical trials of another drug and may not reflect the rates observed in practice.

A total of 355 patients with LN were treated with voclosporin in the Phase 2 and 3 clinical studies with 224 exposed for at least 48 weeks, and 92 exposed for 3 years.

Patients in Study 1 were randomized to LUPKYNIS 23.7 mg twice a day or placebo. A proportion of patients (n=216, 60%) in Study 1 continued in Study 1 extension, a double-blinded continuation study, and these patients were observed for up to 2 additional years [see [Clinical Studies \(14\)](#)]. Patients in Study 2 were randomized to LUPKYNIS 23.7 mg twice a day, voclosporin 39.5 mg twice a day, or placebo.

Patients received background treatment with MMF 2 g daily and an IV bolus of corticosteroids followed by a pre-specified oral corticosteroid taper dosing schedule; LUPKYNIS dosing was adjusted based on eGFR and BP.

A total of 267 patients received at least 1 dose of LUPKYNIS 23.7 mg twice a day with 184 exposed for at least 48 weeks. A total of 88 patients received at least 1 dose of voclosporin 39.5 mg twice a day with 40 exposed for 48 weeks.

Table 1 lists common adverse reactions occurring in at least 3% of patients receiving LUPKYNIS and at an incidence at least 2% greater than placebo in Studies 1 and 2.

**Table 1: Adverse Reactions in  $\geq 3\%$  of Patients Treated with LUPKYNIS 23.7 mg Twice a Day and  $\geq 2\%$  Higher than Placebo in Studies 1 and 2**

Adverse Reaction	LUPKYNIS 23.7 mg twice a day (n=267)	Placebo (n=266)
Glomerular filtration rate decreased*	26%	9%
Hypertension	19%	9%
Diarrhea	19%	13%
Headache	15%	8%
Anemia	12%	6%
Cough	11%	2%
Urinary tract infection	10%	6%
Abdominal pain upper	7%	2%
Dyspepsia	6%	3%
Alopecia	6%	3%
Renal Impairment*	6%	3%
Abdominal pain	5%	2%
Mouth ulceration	4%	1%
Fatigue	4%	1%
Tremor	3%	1%
Acute kidney injury*	3%	1%
Decreased appetite	3%	1%

\*See Specific Adverse Reactions below ([Nephrotoxicity](#))

Other adverse reactions reported in less than 3% of patients in the LUPKYNIS 23.7 mg group and at a 2% higher rate than in the placebo group through 48/52 weeks included gingivitis and hypertrichosis.

The overall profile of adverse events seen in Study 1 extension (representing 203 patient-years of additional exposure) were similar in both nature and severity to those seen in the first year of treatment (Study 1). The annual incidence of adverse reactions reduced each successive year in both treatment groups.

The integrated LN dataset is presented in the [Specific Adverse Reactions](#) section:

Placebo-controlled Studies: Studies 1 and 2 were integrated to represent safety through 48/52 weeks for placebo (n=266), LUPKYNIS 23.7 mg twice a day (n=267), and voclosporin 39.5 mg twice a day (n=88). Among patients from Study 1, 100 patients (56.2%) on placebo twice a day and 116 patients (64.8%) on LUPKYNIS 23.7 mg twice a day continued in a follow-on study period for up to 2 additional years (Study 1 extension), with safety assessments through a total of up to 3 years.

Exposure adjusted incidence rates were adjusted by study for all the adverse events reported in this section.

## Specific Adverse Reactions

### *Infections*

In the integrated Study 1 and Study 2 data sets, infections were reported in 146 patients (107.4 per 100 patient-years) treated with placebo, 166 patients (135.2 per 100 patient-years) treated with LUPKYNIS 23.7 mg, and 58 patients (167.5 per 100 patient-years) treated with voclosporin 39.5 mg twice a day. The most frequent infections were upper respiratory tract infections, urinary tract infections, viral upper respiratory tract infections, and herpes zoster.

Serious infections were reported in 27 patients (12.0 per 100 patient-years) treated with placebo, 27 patients (11.9 per 100 patient-years) treated with LUPKYNIS 23.7 mg, and 10 patients (14.4 per 100 patient-years) treated with voclosporin 39.5 mg twice a day. The most frequent serious infections were pneumonia, gastroenteritis, and urinary tract infections.

Opportunistic infections were reported in 2 patients (0.9 per 100 patient-years) treated with placebo, 3 patients (1.3 per 100 patient-years) treated with LUPKYNIS 23.7 mg, and 1 patient (1.4 per 100 patient-years) treated with voclosporin 39.5 mg twice a day. The most frequent opportunistic infections were cytomegalovirus chorioretinitis, cytomegalovirus infection, and herpes zoster cutaneous disseminated.

In Study 1 extension, infections and infestations were reported in 43 patients (32.3 per 100 patient-years) treated with placebo and 57 patients (41.4 per 100 patient-years) treated with LUPKYNIS 23.7 mg. There were 8 serious infections reported in both placebo treated patients (4.5 per 100 patient-years) and LUPKYNIS treated patients (3.9 per 100 patient-years).

### *Nephrotoxicity*

In the integrated Study 1 and Study 2 data sets, glomerular filtration rate decreased was the most frequently reported adverse reaction, reported in 25 patients (11.3 per 100 patient-years) treated with placebo, 70 patients (37.1 per 100 patient-years) treated with LUPKYNIS 23.7 mg, and 27 patients (48.7 per 100 patient-years) treated with voclosporin 39.5 mg twice a day. In patients treated with LUPKYNIS 23.7 mg twice a day, decreases in glomerular filtration rate occurred within the first 3 months of LUPKYNIS treatment in 50/70 (71%), with 39/50 (78%) resolved or improved following dose modification, and of those 25/39 (64%) resolved or improved within 1 month [see [Dosage and Administration \(2.3\)](#)]. Decreases in glomerular filtration rate resulted in permanent discontinuation of LUPKYNIS in 10/70 (14%), and resolved in 4/10 (40%) 3 months after treatment discontinuation.

Renal adverse reactions (defined as renal impairment, acute kidney injury, blood creatinine increased, azotemia, renal failure, oliguria, and proteinuria) were reported in 22 patients (9.5 per 100 patient-years) treated with placebo, 26 patients (11.3 per 100 patient-years) treated with LUPKYNIS 23.7 mg, and 11 patients (16.5 per 100 patient-years) treated with voclosporin 39.5 mg twice a day.

Serious renal adverse reactions were reported in 9 patients (3.7 per 100 patient-years) treated with placebo, 13 patients (5.6 per 100 patient-years) treated with LUPKYNIS 23.7 mg, and 0 patients (0 per 100 patient-years) treated with voclosporin 39.5 mg twice a day. The most frequent serious renal adverse reactions were acute kidney injury and renal impairment.

In Study 1 extension, eGFR decreased was reported in 5 patients (2.8 per 100 patient-years) treated with placebo and 12 patients (6.1 per 100 patient-years) treated with LUPKYNIS 23.7 mg. Renal and urinary adverse events were reported in 10 patients (5.7 per 100 patient-years) treated with placebo and 21 patients (10.7 per 100 patient-years) treated with LUPKYNIS. Serious renal and urinary adverse events were reported in 5 patients (2.8 per 100 patient-years) treated with placebo and 2 patients (0.9 per 100 patient-years) treated with LUPKYNIS, and included lupus nephritis in both treatment groups.

### *Hypertension*

In the integrated Study 1 and Study 2 data sets, hypertension was reported in 23 patients (10.3 per 100 patient-years) treated with placebo, 51 patients (25.2 per 100 patient-years) treated with LUPKYNIS 23.7 mg, and 16 patients (26.0 per 100 patient-years) treated with voclosporin 39.5 mg twice a day.

Serious hypertension was reported in 1 patient (0.4 per 100 patient-years) treated with placebo, 5 patients (2.1 per 100 patient-years) treated with LUPKYNIS 23.7 mg, and 2 patients (2.8 per 100 patient-years) treated with voclosporin 39.5 mg twice a day.

In Study 1 extension, hypertension was reported in 7 patients (4.0 per 100 patient-years) treated with placebo and 10 patients (4.9 per 100 patient-years) treated with LUPKYNIS 23.7 mg.

### *Neurotoxicity*

In the integrated Study 1 and Study 2 data sets, nervous system disorders were reported in 44 patients (21.6 per 100 patient-years) treated with placebo, 74 patients (38.9 per 100 patient-years) treated with LUPKYNIS 23.7 mg, and 24 patients (42.5 per 100 patient-years) treated with voclosporin 39.5 mg twice a day. The most frequent neurological adverse reactions were headache, tremor, dizziness, post herpetic neuralgia, migraine, paresthesia, hypoaesthesia, seizure, tension headache, and disturbance in attention.

Serious nervous system disorders were reported in 2 patients (0.9 per 100 patient-years) treated with placebo, 9 patients (3.9 per 100 patient-years) treated with LUPKYNIS 23.7 mg, and 3 patients (4.3 per 100 patient-years) treated with voclosporin 39.5 mg twice a day. The most frequent serious neurological adverse reactions were headache, migraine, seizure, and posterior reversible encephalopathy syndrome.

In Study 1 extension, nervous system disorders (including headache) were reported in 8 patients (4.7 per 100 patient-years) treated with placebo and 14 patients (7.3 per 100 patient-years) treated with LUPKYNIS 23.7 mg.

### *Malignancy*

In the integrated Study 1 and Study 2 data sets, malignancies were reported in 0 patients (0 per 100 patient-years) treated with placebo, 4 patients (1.7 per 100 patient-years) treated with LUPKYNIS 23.7 mg, and 0 patients (0 per 100 patient-years) treated with voclosporin 39.5 mg twice a day. These consisted of single occurrences of stage 0 cervical carcinoma, skin neoplasm, pyoderma gangrenosum, and breast tumor excision.

In Study 1 extension, there were no reports of malignancies in either treatment arm.

### *Hyperkalemia*

In the integrated Study 1 and Study 2 data sets, hyperkalemia was reported in 2 patients (0.8 per 100 patient-years) treated with placebo, 5 patients (2.1 per 100 patient-years) treated with LUPKYNIS 23.7 mg, and 1 patient (1.4 per 100 patient-years) treated with voclosporin 39.5 mg twice a day.

In Study 1 extension, hyperkalemia was reported in 0 patients treated with placebo and 1 patient (0.5 per 100 patient-years) treated with LUPKYNIS 23.7 mg.

### *QT Prolongation*

In the integrated Study 1 and Study 2 data sets, QT prolongation was reported in 0 patients (0 per 100 patient-years) treated with placebo, 2 patients (0.9 per 100 patient-years) treated with LUPKYNIS 23.7 mg, and 1 patient (1.4 per 100 patient-years) treated with voclosporin 39.5 mg twice a day.

In Study 1 extension, no patient treated with LUPKYNIS 23.7 mg reported QT prolongation.

## **7 DRUG INTERACTIONS**

### **7.1 Effect of Other Drugs on LUPKYNIS**

#### Strong and Moderate CYP3A4 Inhibitors

Voclosporin is a sensitive CYP3A4 substrate. Co-administration with strong or moderate CYP3A4 inhibitors increases voclosporin exposure [see [Clinical Pharmacology \(12.3\)](#)], which may increase the risk of LUPKYNIS adverse reactions. Co-administration of LUPKYNIS with strong CYP3A4 inhibitors (e.g., ketoconazole, itraconazole, clarithromycin) is contraindicated [see [Contraindications \(4\)](#)]. Reduce LUPKYNIS dosage when co-administered with moderate CYP3A4 inhibitors (e.g., verapamil, fluconazole, diltiazem) [see [Dosage and Administration \(2.5\)](#)]. Avoid food or drink containing grapefruit when taking LUPKYNIS.

#### Strong and Moderate CYP3A4 Inducers

Voclosporin is a sensitive CYP3A4 substrate. Co-administration with strong or moderate CYP3A4 inducers decreases voclosporin exposure [see [Clinical Pharmacology \(12.3\)](#)], which may decrease the efficacy of LUPKYNIS. Avoid co-administration of LUPKYNIS with strong or moderate CYP3A4 inducers.

### **7.2 Effect of LUPKYNIS on Other Drugs**

#### Certain P-gp Substrates

Voclosporin is a P-gp inhibitor. Co-administration of voclosporin increases exposure of P-gp substrates [see [Clinical Pharmacology \(12.3\)](#)], which may increase the risk of adverse reactions of these substrates. For certain P-gp substrates with a narrow therapeutic window, reduce the dosage of the substrate as recommended in its prescribing information, if needed.

#### OATP1B1 Substrates

Voclosporin is an inhibitor of OATP1B1 and OATP1B3 transporters. In one clinical study the concomitant administration of a single 40 mg dose of simvastatin with 23.7 mg BID voclosporin

increased  $C_{max}$  and AUC of the active metabolite simvastatin acid (an OATP1B1 substrate) by 3.1-fold and 1.8-fold, respectively [see *Clinical Pharmacology (12.3)*]. Monitor for adverse events such as myopathy and rhabdomyolysis when OATP1B1/OATP1B3 substrates (e.g., simvastatin, atorvastatin, pravastatin, rosuvastatin, pitavastatin, fluvastatin) are used concomitantly with LUPKYNIS and reduce the dosage of these substrates as recommended in their prescribing information. For example, when taking LUPKYNIS with simvastatin, limit the simvastatin dosage to 20 mg daily, or 40 mg daily for patients who have previously tolerated simvastatin 80 mg daily for at least one year without evidence of muscle toxicity.

## 8 USE IN SPECIFIC POPULATIONS

### 8.1 Pregnancy

#### Risk Summary

Avoid use of LUPKYNIS in pregnant women due to the alcohol content of the drug formulation. The available data on the use of LUPKYNIS in pregnant patients are insufficient to determine whether there is a drug-associated risk for major birth defects, miscarriage, or adverse maternal or fetal outcomes. There are risks to the mother and fetus associated with systemic lupus erythematosus (SLE) (see *Clinical Considerations*).

LUPKYNIS may be used in combination with a background immunosuppressive therapy regimen that includes MMF. MMF used in pregnant women and men whose female partners are pregnant can cause fetal harm (major birth defects and miscarriage). Refer to the MMF prescribing information for more information on its use during pregnancy.

In animal reproductive studies, oral administration of either voclosporin or a 50:50 mixture of voclosporin and its cis-isomer was embryocidal and fetocidal in rats and rabbits at doses 15- and 1-times, respectively, the maximum recommended human dose (MRHD) of 23.7 mg twice a day, based on drug exposure AUC. There were no treatment-related fetal malformations or variations. Additional findings of reduced placental and fetal body weights occurred in rabbits at 0.1 to 0.3-times the MRHD and in rats at higher drug exposures. Voclosporin was transferred across the placenta in pregnant rats. For rats, but not all doses in rabbits, these effects were associated with maternal toxicity consisting of reductions in body weight gain. Dystocia was evident in a pre- and postnatal study in rats, but there were no effects of voclosporin on postnatal growth and development (see *Data*).

The estimated background risk of major birth defects and miscarriage for the indicated population is unknown. All pregnancies have a background risk of birth defect, loss, or other adverse outcomes. In the U.S. general population, the background risk of major birth defects and miscarriage in clinically recognized pregnancies is 2% to 4% and 15% to 20%, respectively.

#### Clinical Considerations

##### *Disease-Associated Maternal and/or Embryo/Fetal Risk*

Pregnant women with SLE are at increased risk of adverse pregnancy outcomes, including worsening of the underlying disease, premature birth, miscarriage, and intrauterine growth restriction. Maternal LN increases the risk of hypertension and preeclampsia/eclampsia. Passage of maternal autoantibodies across the placenta may result in adverse neonatal outcomes, including neonatal lupus and congenital heart block.

### *Fetal/Neonatal adverse reactions*

The formulation of LUPKYNIS contains alcohol (21.6 mg of dehydrated ethanol per capsule for a total daily dose of 129.4 mg/day). Published studies have demonstrated that alcohol is associated with fetal harm including central nervous system abnormalities, behavioral disorders and impaired intellectual development. There is no safe level of alcohol exposure in pregnancy; therefore, avoid use of LUPKYNIS in pregnant women.

### Data

#### *Animal Data*

Voclosporin (90 to 95% trans-isomer) is the active ingredient in LUPKYNIS. Animal reproductive studies were primarily conducted with an approximate 50:50 mixture of voclosporin and its cis-isomer. Similarity of the toxicity effects of the 50:50 mixture and voclosporin was demonstrated in comparative toxicity studies with adult rats. Interconversion between cis and trans isomers was not detected with in vitro or in vivo studies.

In an embryofetal developmental study, pregnant rats were dosed orally, during the period of organogenesis from gestation days 6-17, with the 50:50 mixture of voclosporin and its cis-isomer, litter size was reduced due to increased fetal resorptions and deaths at drug exposures approximately 15-times the MRHD (on an AUC basis with a maternal oral dose of 25 mg/kg/day). Surviving fetuses had reduced placental weights and slightly reduced fetal weights. There were no treatment-related fetal malformations or variations with doses up to 15-times the MRHD, although reductions in ossification sites were observed in the metatarsal bones. This dose was associated with maternal toxicity based on decreased body weight gain. The no effect dose for both fetal and maternal effects occurred at a drug exposure approximately 7-times the MRHD (on an AUC basis with a maternal oral dose of 10 mg/kg/day).

Two embryofetal developmental studies were conducted in pregnant rabbits that received either the 50:50 mixture of voclosporin and its cis-isomer or voclosporin during the period of organogenesis from gestation days 6-18. Litter size was reduced due to increased fetal resorptions and deaths with 50:50 mixture at drug exposures approximately the MRHD (on an AUC basis with a maternal oral dose of 20 mg/kg/day). Increased resorptions were observed with voclosporin at 0.1-times the MRHD (on an AUC basis with a maternal dose of 20 mg/kg/day); however, litter size was not significantly affected. Decreased placental weights and fetal body weights were observed with the 50:50 mixture at doses 0.3-times the MRHD and higher (on an AUC basis with maternal oral doses of 10 mg/kg/day and higher). Decreased fetal body weights were observed with voclosporin at doses 0.1-times the MRHD and higher (on an AUC basis with maternal oral doses of 5 mg/kg/day and higher). There were no treatment-related malformations or variations. Both studies had reductions of ossification sites in the metacarpal bones with the 50:50 mixture at doses 2-times the MRHD, and the sternabrae and hyoid body and/or arches with voclosporin at doses 0.1-times the MRHD and higher. The high dose of 20 mg/kg/day 50:50 mixture of voclosporin was associated with maternal toxicity based on decreased body weight gains. These rabbit studies indicated that the toxicity of 50:50 mixture of voclosporin and its cis-isomer and voclosporin were qualitatively similar; however, voclosporin was more potent than the 50:50 mixture, consistent with its pharmacological potency. The no effect dose for the fetal effects of voclosporin occurred at a drug exposure approximately 0.01-times the MRHD (on an AUC basis with a maternal oral dose of 1 mg/kg/day).

In a pre-and post-natal developmental study, rats were dosed from gestation day 7 through lactation day 20 with a 50:50 mixture of voclosporin and its cis-isomer. Dystocia (delayed parturition) occurred at a dose 12-times the MRHD (on an AUC basis with a maternal oral dose of 25 mg/kg/day) that

resulted in reductions of the mean number of total pups delivered and surviving pups per litter. This dose was associated with maternal toxicity based on decreased body weight gain. No adverse effects on dams or their pups were observed at doses 3-times the MRHD and lower (on an AUC basis with a maternal oral dose of 10 mg/kg/day). There were no effects on behavioral and physical development, or the reproductive performance of male or female pups. The no effect dose for delivery and pup survival was 10 mg/kg/day.

## 8.2 Lactation

### Risk Summary

The available human data from a clinical lactation study detected small amounts of voclosporin in human milk. Following a single dose to lactating subjects, a fully breastfed infant was estimated to receive a daily infant dose of 0.00675 mg/kg, and relative infant dose of 1.4% the maternal weight-adjusted dose. No change is expected for infant exposure at steady state with maternal twice daily dosing (see *Data*). Available data from the clinical study and published scientific literature are insufficient to determine the effects of LUPKYNIS on the breastfed infant or on milk production. The developmental and health benefits of breastfeeding should be considered along with the mother's clinical need for LUPKYNIS and any potential adverse effects on the breastfed infant from LUPKYNIS or from the medical condition of the mother.

### Data

Following a single 23.7 mg dose of voclosporin in healthy lactating subjects, an average of 0.00472 mg voclosporin was excreted in breast milk. Data showed that the voclosporin milk to maternal blood exposure ratio was in the range of 0.42 to 0.95. Based on the infant milk intake of 200 mL/kg/day, the highest estimated voclosporin dose ingested by fully breastfed infant was 1.4% of maternal weight-adjusted dose, which equals estimated daily infant dose of 0.00675 mg/kg/day. At steady state following maternal twice daily dosing regimen, the percent of voclosporin dose present in breast milk is expected to be similar to that following maternal single dose.

## 8.3 Females and Males of Reproductive Potential

LUPKYNIS may be used in combination with a background immunosuppressive therapy regimen that includes MMF. If LUPKYNIS is administered with MMF, the information for MMF regarding pregnancy testing, contraception, and infertility also applies to this combination regimen. Refer to MMF prescribing information for additional information.

## 8.4 Pediatric Use

The safety and efficacy of LUPKYNIS in pediatric patients has not been established.

## 8.5 Geriatric Use

Clinical studies of LUPKYNIS did not include sufficient numbers of patients aged 65 and over to determine whether they respond differently from younger patients. Other reported clinical experience has not identified differences in responses between the elderly and younger patients. In general, dose selection for an elderly patient should be cautious, usually starting at the low end of the dosing range, reflecting the greater frequency of decreased hepatic, renal, or cardiac function, and of concomitant disease or other drug therapy.

## 8.6 Renal Impairment

Use of LUPKYNIS is not recommended in patients with a baseline eGFR  $\leq 45$  mL/min/1.73 m<sup>2</sup> unless the benefit exceeds the risk. If used in patients with severe renal impairment at baseline, LUPKYNIS should be used at a reduced dose [see *Dosage and Administration* (2.4)]. No dosage adjustment is recommended in patients with mild or moderate renal impairment at baseline [see *Clinical Pharmacology* (12.3)]. Monitor eGFR closely.

After initiating therapy, dosing adjustments should be made based on eGFR [see *Dosage and Administration* (2.3)].

## 8.7 Hepatic Impairment

In patients with mild and moderate hepatic impairment (Child-Pugh A and Child-Pugh B), reduce the LUPKYNIS dosage [see *Dosage and Administration* (2.4)]. Avoid LUPKYNIS in patients with severe hepatic impairment (Child-Pugh C) [see *Clinical Pharmacology* (12.3)].

## 10 OVERDOSAGE

Cases of accidental overdose have been reported with LUPKYNIS; symptoms may include tremor, headache, nausea and vomiting, infections, tachycardia, urticaria, lethargy, and increases in blood urea nitrogen, serum creatinine, and alanine aminotransferase levels.

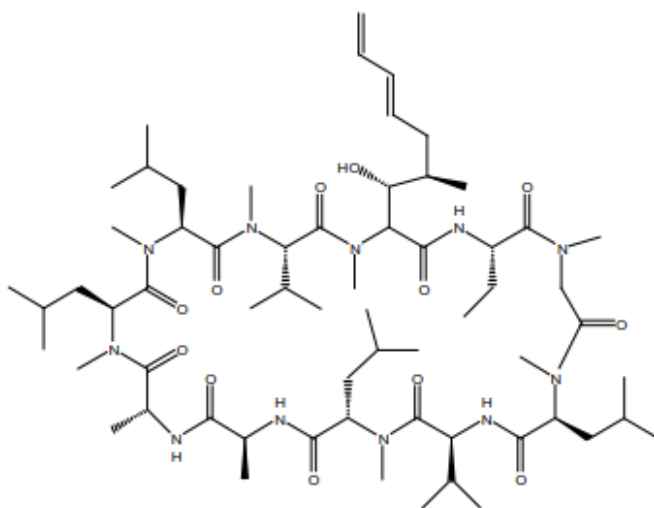
No specific antidote to LUPKYNIS therapy is available. If overdose occurs, general supportive measures and symptomatic treatment should be conducted, including stopping treatment with LUPKYNIS and assessing blood urea nitrogen, serum creatinine, eGFR, and alanine aminotransferase levels.

Consider contacting a poison center (1-800-222-1222) or medical toxicologist for advice and review of overdose management recommendations.

## 11 DESCRIPTION

LUPKYNIS (voclosporin) capsules, a calcineurin-inhibitor immunosuppressant, is available for administration as soft gelatin capsules containing 7.9 mg voclosporin per capsule. Inactive ingredients include alcohol, Vitamin E polyethylene glycol succinate (NF), polysorbate 40 (NF), medium-chain triglycerides (NF), gelatin, sorbitol, glycerin, iron oxide yellow, iron oxide red, titanium dioxide, and water.

Voclosporin (90 to 95% *trans*-isomer) is the active ingredient in LUPKYNIS. Chemically, voclosporin is named: Cyclo{{{(6E)-(2S,3R,4R)-3-hydroxy-4-methyl-2-(methylamino)-6,8-nonadienoyl}}-L-2-aminobutyryl-N-methyl-glycyl-N-methyl-L-leucyl-L-valyl-N-methyl-L-leucyl-L-alanyl-D-alanyl-N-methyl-L-leucyl-N-methyl-L-leucyl-N-methyl-L-valyl}. The chemical structure of voclosporin is:



Voclosporin has an empirical formula of  $C_{63}H_{111}N_{11}O_{12}$  and a molecular weight of 1214.6 g/mole. It appears as white to off-white solid matter. At ambient temperature, voclosporin is freely soluble in acetone, acetonitrile, ethanol, and methanol, and practically insoluble in heptanes (USP). Voclosporin is practically insoluble (less than 0.1 g/L at 20°C) in water and melts above 144°C with decomposition.

## 12 CLINICAL PHARMACOLOGY

### 12.1 Mechanism of Action

LUPKYNIS is a calcineurin-inhibitor immunosuppressant. The mechanism of voclosporin suppression of calcineurin has not been fully established. Activation of lymphocytes involves an increase in intracellular calcium concentrations that bind to the calcineurin regulatory site and activate calmodulin binding catalytic subunit and through dephosphorylation activates the transcription factor, Nuclear Factor of Activated T-Cell Cytoplasmic (NFATc). The immunosuppressant activity results in inhibition of lymphocyte proliferation, T-cell cytokine production, and expression of T-cell activation surface antigens.

Studies in animal models also support a non-immunological role for calcineurin inhibition in kidney function to stabilize actin cytoskeleton and stress fibers in podocytes leading to increased podocyte integrity in glomeruli.

### 12.2 Pharmacodynamics

#### Calcineurin inhibition

Concentration-dependent calcineurin inhibition, measured as the percent of maximum calcineurin inhibition, was observed after oral administration of voclosporin twice daily in healthy volunteers. There is little or no lag time between the time to maximum drug concentration and the time to maximum calcineurin inhibition. Voclosporin inhibits calcineurin in a dose-dependent manner up to a maximum dose of 1.0 mg/kg.

## Cardiac Electrophysiology

In a randomized, placebo- and active-controlled (moxifloxacin 400 mg), single dose study with parallel study design, dose-dependent QT prolonging effect was detected with LUPKYNIS in the dose range of 0.5–4.5 mg/kg (up to 9-fold coverage of the therapeutic exposure). Dose-dependent QT prolongation effect was observed with a time to maximum QTc increase occurring at 4–6-hour postdose across different dose levels. The maximum mean placebo-adjusted changes of QTcF from baseline after LUPKYNIS 0.5 mg/kg, 1.5 mg/kg, 3.0 mg/kg, and 4.5 mg/kg dose were 6.4 msec, 17.5 msec, 25.7 msec, and 34.6 msec, respectively.

In a separate, randomized, placebo-controlled, crossover study in 31 healthy subjects, an absence of large mean increases (i.e., >20 msec) was observed following 7 days of treatment with LUPKYNIS at 0.3, 0.5 and 1.5 mg/kg twice daily (approximately 6-fold coverage of the therapeutic exposure).

The mechanism for the QT prolonging effect as observed in the single-dose and multiple-dose studies is unknown.

## **12.3 Pharmacokinetics**

The whole blood voclosporin pharmacokinetics increase in a greater than dose-proportional manner over the therapeutic range. With a twice daily dosing regimen, voclosporin achieves steady-state after 6 days and the accumulation is approximately 2-fold.

### Absorption

The median  $T_{max}$  of voclosporin is 1.5 hours (1 to 4 hours) when administered on an empty stomach.

### *Effect of Food*

Co-administration of voclosporin with food decreased both the rate and extent of absorption: with either low- or high-fat meals,  $C_{max}$  and AUC of voclosporin were reduced by 29% to 53% and 15% to 25%, respectively.

### Distribution

The apparent volume of distribution ( $V_{ss}/F$ ) of voclosporin is 2,154 L.

Protein binding of voclosporin is 97%. Voclosporin partitions extensively into red blood cells and distribution between whole blood and plasma is concentration- and temperature-dependent.

### Elimination

The mean apparent clearance at steady-state ( $CL_{ss}/F$ ) of voclosporin is 63.6 L/h, and mean terminal half-life ( $t_{1/2}$ ) is approximately 30 hours (24.9 to 36.5 hours).

### *Metabolism*

Voclosporin is predominantly metabolized by CYP3A4. Voclosporin is the major circulating component and the pharmacologic activity is mainly attributed to the parent molecule. A major metabolite in human whole blood represented 16.7% of total exposure and is about 8-fold less potent than the parent molecule.

### *Excretion*

Following single oral administration of radiolabeled voclosporin 70 mg, 92.7% of the radioactivity was recovered in feces (including 5% as unchanged voclosporin), and 2.1% was recovered in urine (including 0.25% as unchanged voclosporin).

## Specific Populations

There were no clinically significant differences in the pharmacokinetics of voclosporin based on age (18 to 66 years), sex, race (Caucasian, Black, Asian, other), or body weight (37 to 133 kg).

### *Patients with Renal Impairment*

Voclosporin  $C_{max}$  and AUC were similar in volunteers with mild ( $CL_{Cr}$  60 to 89 mL/min as estimated by Cockcroft-Gault) and moderate ( $CL_{Cr}$  30 to 59 mL/min) renal impairment compared to volunteers with normal renal function ( $CL_{Cr} \geq 90$  mL/min). The  $C_{max}$  and AUC increased 1.5- and 1.7-fold, respectively, in volunteers with severe renal impairment ( $CL_{Cr} < 30$  mL/min). The effect of end-stage renal disease (ESRD) with or without hemodialysis on the pharmacokinetics of voclosporin is unknown.

### *Patients with Hepatic Impairment*

Voclosporin  $C_{max}$  and AUC increased approximately 1.5- to 2.0-fold in volunteers with mild hepatic impairment (Child-Pugh A) or moderate hepatic impairment (Child-Pugh B). The effect of severe hepatic impairment (Child-Pugh C) on the pharmacokinetics of voclosporin is unknown.

## Drug Interaction Studies

### *Effect of Other Drugs on LUPKYNIS*

The effect of co-administered drugs on the exposure of voclosporin is shown in Table 2.

**Table 2: Change in Pharmacokinetics of Voclosporin in the Presence of Co-administered Drugs**

Co-administered Drug	Regimen of Co-administered Drug	Ratio (90% CI) <sup>1</sup>	
		$C_{max}$	AUC
Ketoconazole (strong CYP3A4 inhibitor)	400 mg QD for 9 days	6.45 (5.02, 8.29)	18.55 (15.89, 21.65)
Verapamil (moderate CYP3A4 and strong P-gp inhibitor)	80 mg TID for 10 days	2.08 (1.89, 2.28)	2.71 (2.56, 2.87)
Rifampin (strong CYP3A4 inducer)	600 mg QD for 10 days	0.32 (0.28, 0.37)	0.13 (0.11, 0.15)

Notes: CI = Confidence interval; CYP = Cytochrome P450; P-gp = P-glycoprotein; QD = once daily; TID = every 8 hours.

<sup>1</sup> Ratios for  $C_{max}$  and AUC compare co-administration of the medication with voclosporin vs. administration of voclosporin alone.

- **Moderate CYP3A inhibitors:** Co-administration of multiple doses of fluconazole or diltiazem is predicted to increase voclosporin  $C_{max}$  and  $AUC_{0-12}$  approximately 2- and 3-fold, respectively.
- **Weak CYP3A inhibitors:** Co-administration of multiple doses of fluvoxamine and cimetidine is predicted to have minimal effects on voclosporin  $C_{max}$  and  $AUC_{0-12}$ .
- **Moderate CYP3A inducers:** Co-administration of multiple doses of efavirenz is predicted to decrease voclosporin  $C_{max}$  and  $AUC_{0-12}$  by 61% and 70%, respectively.

In vitro, voclosporin is not a substrate for breast cancer resistance protein (BCRP) or organic anion transporting polypeptides OATP1B1 and OATP1B3.

### Effect of LUPKYNIS on other Drugs

Voclosporin was studied on a background therapy that included MMF. Voclosporin 23.7 mg twice a day in patients with SLE (with or without LN) had no effect on mycophenolic acid (MPA) exposure. Also, clinical studies indicate that voclosporin is a weak inhibitor of P-gp and has no clinically relevant effects on the pharmacokinetics of the sensitive CYP3A4 substrate midazolam. However, voclosporin increased the systemic exposure of OATP1B1 substrate simvastatin and simvastatin acid. Summary of the results from clinical studies which evaluated the effect of voclosporin on other drugs is provided in Table 3.

**Table 3: Change in Pharmacokinetics of Co-administered Drugs in the Presence of Voclosporin**

Co-administered Drug	Multiple Dose Regimen of Voclosporin	Ratio (90% CI) <sup>1</sup>	
		C <sub>max</sub>	AUC
MMF <sup>2</sup> (immunosuppressant)	23.7 mg BID	0.94 (0.77, 1.16)	1.09 (0.94, 1.26)
Digoxin (P-gp substrate)	0.4 mg/kg BID	1.51 (1.40, 1.63)	1.25 (1.19, 1.31)
Midazolam (sensitive CYP3A4 substrate)	0.4 mg/kg BID	0.89 (0.80, 0.99)	1.02 (0.93, 1.12)
Simvastatin acid (OATP1B1 substrate) <sup>3</sup>	23.7 mg BID	3.10 (2.58, 3.73)	1.84 (1.53, 2.20)

Notes: BID = twice daily; CI = Confidence interval; CYP = Cytochrome P450; MMF = mycophenolate mofetil; P-gp = P-glycoprotein.

<sup>1</sup> Ratios for C<sub>max</sub> and AUC compare co-administration of the medication with voclosporin vs. administration of the medication alone.

<sup>2</sup> Observed effect of voclosporin on MPA.

<sup>3</sup> Co-administration of voclosporin with simvastatin increased the C<sub>max</sub> of parent drug simvastatin by 1.6-fold but did not change AUC of simvastatin

Based on in vitro studies, voclosporin does not inhibit BCRP, CYP1A2, 2B6, 2C8, 2C9, 2C19, 2D6, or induce CYP1A2, 2B6, 3A4. Voclosporin is an inhibitor of OATP1B1 and OATP1B3.

## 13 NONCLINICAL TOXICOLOGY

### 13.1 Carcinogenesis, Mutagenesis, Impairment of Fertility

In a 2-year mouse carcinogenicity study, administration of voclosporin at oral doses of 3, 10, or 30 mg/kg/day resulted in an increased incidence of malignant lymphoma in high dose females (7.5 times the MRHD on an AUC basis) and a dose-responsive trend for increase in malignant lymphoma in males. Malignant lymphoma was considered drug related in mice. In a 2-year rat carcinogenicity study, oral administration of voclosporin at doses up to 1.25 mg/kg/day in males and 2.5 mg/kg/day in females (doses that result in approximately similar drug exposures in rats) resulted in no statistically significant increases of tumor incidences.

In a 39-week oral toxicology study with monkeys, malignant lymphomas occurred at a dose of 150 mg/kg/day (approximately 4- and 7-times MRHD based on AUC for male and female animals,

respectively). [At this dose, monkeys experienced high levels of immunosuppression as indicated by maximum calcineurin inhibition levels ( $E_{max}$ ) of greater than 80%.]

Voclosporin was not mutagenic or clastogenic in a standard battery of genetic toxicity studies that included the in vitro bacterial reverse mutation assay, in vitro Chinese hamster ovary cell chromosomal aberration assay, and in vivo rat micronucleus assay.

Voclosporin had no effect on fertility at doses up to 25 mg/kg/day in male and female rats (16- and 9-times MRHD based on AUC, respectively).

## 14 CLINICAL STUDIES

The safety and efficacy of LUPKYNIS were investigated in Study 1 (NCT03021499), a 52-week, randomized, double-blind, placebo-controlled trial in patients with a diagnosis of systemic lupus erythematosus and with International Society of Nephrology / Renal Pathology Society (ISN/RPS) biopsy-proven active Class III or IV LN (alone or in combination with Class V LN) or Class V LN. Patients with Class III or IV LN (alone or in combination with Class V LN) were required to have a urine protein to creatinine ratio (UPCR) of  $\geq 1.5$  mg/mg; patients with Class V LN were required to have a UPCR of  $\geq 2$  mg/mg.

A total of 357 patients with LN were randomized in a 1:1 ratio to receive either LUPKYNIS 23.7 mg twice daily or placebo.

Patients in both arms received background treatment with MMF and corticosteroids as follows:

- Oral MMF at a target dose of 2 g/day (1 g twice a day). (Patients not already receiving MMF were started on MMF 500 mg twice a day with escalation to MMF 1 g twice a day after the first week.) Dose increases up to 3 g/day were allowed.
- Intravenous (IV) methylprednisolone on Day 1 and Day 2 at a dose of 500 mg/day (body weight  $\geq 45$  kg) or 250 mg/day (body weight  $< 45$  kg) followed by a reducing taper of oral corticosteroids [oral prednisone 25 mg/day (body weight  $\geq 45$  kg) or 20 mg/day (body weight  $< 45$  kg); tapered to achieve a target dose of 2.5 mg/day by Week 16].

Throughout the study, patients were prohibited from using immunosuppressants (other than MMF and hydroxychloroquine/chloroquine) and from changing/commencing angiotensin II receptor blockers (ARBs) or angiotensin converting enzyme (ACE) inhibitors.

Patients with baseline eGFR  $\leq 45$  mL/min/1.73 m<sup>2</sup> were not enrolled in this study.

Dosage was adjusted based on eGFR and BP in a pre-defined dosage adjustment protocol. Dosage adjustments should follow the dosage recommendations [see [Dosage and Administration \(2.3\)](#)].

The median age of patients was 31 years (range 18 to 72). The proportion of women was 88%. Approximately 36.1% were White, 9.5% were Black, 30.5% were Asian, 1.1% were American Indian or Alaska Native, and 22.7% were multiple race or other. Approximately 32.5% were Hispanic or Latino.

The mean (SD) daily dose of voclosporin was 41.3 ( $\pm 9.7$ ) mg/day. The mean (SD) daily dose of MMF was 1.9 ( $\pm 0.4$ ) g/day; 9% received  $> 2$  but  $\leq 3$  g/day of MMF. The mean (SD) daily dose of IV methylprednisolone (on Day 1 was 495 ( $\pm 90$ ) mg/day and Day 2 was 487 ( $\pm 55$ ) mg/day). The mean (SD) starting oral corticosteroid dose (Day 3) was 22.8 ( $\pm 4.8$ ) mg/day; approximately 81% received  $\leq 2.5$  mg/day of oral corticosteroids at Week 16.

The distribution by kidney biopsy class was Class III or IV (60.8%), Class III or IV in combination with Class V (24.9%), and Class V (14.3%). Mean (SD) eGFR on entry was 91 ( $\pm$ 30) mL/min/1.73 m<sup>2</sup>. Mean (SD) UPCr on entry was 4.0 ( $\pm$ 2.5) mg/mg.

The primary efficacy endpoint was the proportion of patients achieving complete renal response at Week 52. Complete renal response was defined as follows (both must be met):

- UPCr of  $\leq$ 0.5 mg/mg, and
- eGFR  $\geq$ 60 mL/min/1.73 m<sup>2</sup> or no confirmed decrease from baseline in eGFR of  $>$ 20% or no treatment- or disease-related eGFR-associated event (defined as blood creatinine increased, creatinine renal clearance decreased, glomerular filtration rate decreased, serum creatinine increased, renal impairment, renal failure, or renal failure acute) at time of assessment.

In order to be considered a responder, the patient must not have received more than 10 mg prednisone for  $\geq$ 3 consecutive days or for  $\geq$ 7 days in total during Weeks 44 through 52. Patients who received rescue medication or withdrew from the study were considered non-responders.

A higher proportion of patients in the LUPKYNIS arm than the placebo arm achieved complete renal response at Week 52 (Table 4).

**Table 4: Complete Renal Response at Week 52 (Study 1)**

	LUPKYNIS (N=179)	Placebo (N=178)	Odds Ratio
Primary Endpoint			
Complete Renal Response at Week 52 [n (%)] <sup>a</sup>	73 (40.8)	40 (22.5)	2.7 (95% CI: 1.6, 4.3); p<0.001
Components of Primary Endpoint			
UPCr $\leq$ 0.5 mg/mg [n (%)]	81 (45.3)	41 (23.0)	3.1 (95% CI: 1.9, 5.0)
eGFR $\geq$ 60 mL/min/1.73 m <sup>2</sup> or no confirmed decrease from baseline in eGFR of $>$ 20% or no treatment- or disease-related eGFR-associated adverse event <sup>b</sup> at time of assessment [n (%)]	147 (82.1)	135 (75.8)	1.5 (95% CI: 0.8, 2.5)

CI = Confidence interval; eGFR = Estimated glomerular filtration rate; UPCr = Urine protein to creatinine ratio.

- a. In order to be considered a responder, the patient must not have received more than 10 mg prednisone for  $\geq$ 3 consecutive days or for  $\geq$ 7 days in total during Weeks 44 through 52. Patients who received rescue medication, withdrew from the study, or otherwise had partial or full missing data for response status were considered non-responders.
- b. Treatment- or disease-related eGFR-associated event is defined as blood creatinine increased, creatinine renal clearance decreased, glomerular filtration rate decreased, serum creatinine increased, renal impairment, renal failure, or renal failure acute.

A higher proportion of patients in the LUPKYNIS arm than the placebo arm achieved complete renal response at Week 24 (32.4% vs. 19.7%; odds ratio: 2.2; 95% CI: 1.3, 3.7). Time to UPCr of  $\leq$ 0.5 mg/mg was shorter in the LUPKYNIS arm than the placebo arm (median time of 169 days vs. 372 days; hazard ratio: 2.0; 95% CI: 1.5, 2.7).

A 2-year extension study (NCT03597464) followed Study 1. After reconsenting, patients remained on blinded randomized treatment. From the LUPKYNIS arm, 116 patients (64.8%) and from the placebo arm, 100 patients (56.2%) agreed to continue treatment for up to a further 2 years. Over 52% of the 357 patients completed the study (LUPKYNIS 56.4%, placebo 47.8%); 51.4% of LUPKYNIS patients and 41.0% of placebo patients were still on study treatment at the end of study.

Among the 179 LUPKYNIS patients and 178 placebo patients who entered Study 1, 36 (20.1%) LUPKYNIS patients and 21 (11.8%) placebo patients were observed to achieve sustained complete renal response, where achieving sustained complete renal response is defined as achieving renal response at Month 12 and maintaining the renal response at each subsequent study visit through Month 36 (the end of the extension study). Thirty-nine (21.8%) LUPKYNIS subjects and 41 (23.0%) placebo subjects had missing data either at the end of the first year or by the end of the 2 year extension and therefore have an unknown status for sustained complete renal response.

## 16 HOW SUPPLIED/STORAGE AND HANDLING

LUPKYNIS (voclosporin) capsules 7.9 mg are oval, pink/orange capsules, imprinted on one side with VCS in white ink, packed in cold-formed aluminum blisters, consisting of laminated backing and lidding materials that are thermo-sealed together. Four individual 3 × 5 blister strips are assembled into a cardboard wallet.

LUPKYNIS is available in:

- NDC 75626-001-01: Wallet containing 60 capsules
- NDC 75626-001-02: Carton containing three wallets (180 capsules)

LUPKYNIS is provided in child-proof packaging to avoid unintentional ingestion of medication by children.

Store at controlled room temperature 20°C to 25°C (68°F to 77°F); excursions permitted to 15°C to 30°C (59°F to 86°F) [See USP Controlled Room Temperature].

Do not put LUPKYNIS in another container. Keep capsules in their original packaging until ready to be taken.

## 17 PATIENT COUNSELING INFORMATION

Advise the patient to read the FDA-approved patient labeling (Medication Guide).

### *Administration*

Advise patients to:

- Swallow LUPKYNIS capsules whole, and not to open, crush, or divide LUPKYNIS capsules.
- Take LUPKYNIS on an empty stomach consistently as close to a 12-hour schedule as possible, and with a minimum of 8 hours between doses.
- If a dose is missed, take it as soon as possible within 4 hours after missing the dose. Beyond the 4-hour time frame, wait until the usual scheduled time to take the next regular dose. Do not double the next dose.
- Avoid eating grapefruit or drinking grapefruit juice while taking LUPKYNIS.

### *Development of Lymphoma and Other Malignancies*

Inform patients that they are at an increased risk of developing lymphomas and other malignancies, particularly of the skin, due to immunosuppression. Advise patients to limit exposure to sunlight and ultraviolet (UV) light by wearing protective clothing and use a sunscreen with a high protection factor [see [Boxed Warning](#) and [Warnings and Precautions \(5.1\)](#)].

### *Increased Risk of Infection*

Inform patients that they are at an increased risk of developing a variety of infections, including opportunistic infections, due to immunosuppression and to contact their physician if they develop any

symptoms of infection such as fever, sweats or chills, cough or flu-like symptoms, muscle aches, or warm, red, painful areas on the skin [see [Boxed Warning and Warnings and Precautions \(5.2\)](#)].

#### *Nephrotoxicity (Acute and/or Chronic)*

Inform patients that LUPKYNIS can have toxic effects on the kidney that should be monitored. Advise patients to attend all visits and complete all blood tests ordered by their medical team [see [Warnings and Precautions \(5.3\)](#)].

#### *Hypertension*

Inform patients that LUPKYNIS can cause high blood pressure which may require treatment with antihypertensive therapy. Advise patients to monitor their blood pressure [see [Warnings and Precautions \(5.4\)](#)].

#### *Neurotoxicity*

Inform patients that they are at risk of developing adverse neurologic effects including seizure, altered mental status, and tremor. Advise patients to contact their physician should they develop vision changes, delirium, or tremors [see [Warnings and Precautions \(5.5\)](#)].

#### *Hyperkalemia*

Inform patients that LUPKYNIS can cause hyperkalemia. Monitoring of potassium levels may be necessary, especially with concomitant use of other drugs known to cause hyperkalemia [see [Warnings and Precautions \(5.6\)](#)].

#### *Drug Interactions*

Advise patients to tell their healthcare provider when they start or stop taking any concomitant medications. Strong CYP3A4 inhibitors (e.g., ketoconazole, itraconazole, clarithromycin) are contraindicated with LUPKYNIS, and other CYP3A4 enzyme modulating drugs can alter LUPKYNIS exposure [see [Contraindications \(4\)](#) and [Drug Interactions \(7.1\)](#)].

#### *Pregnancy*

Inform female patients of the potential risk to a fetus and to avoid use of LUPKYNIS during pregnancy. When LUPKYNIS is administered in combination with MMF, refer patients to the MMF medication guide. Advise females to inform their healthcare provider if they are pregnant or become pregnant [see [Use in Specific Populations \(8.1, 8.3\)](#)].

#### *Lactation*

Advise female patients to inform their healthcare provider if they are breastfeeding or intend to breastfeed while taking LUPKYNIS [see [Use in Specific Populations \(8.2\)](#)].

#### *Immunizations*

Inform patients that LUPKYNIS can interfere with the usual response to immunizations and that they should avoid live vaccines [see [Warnings and Precautions \(5.8\)](#)].

Manufactured for:

Aurinia Pharmaceuticals Inc.  
#140, 14315 – 118 Avenue  
Edmonton, AB T5L 4S6  
Canada

Distributed by:

Aurinia Pharma U.S., Inc.  
77 Upper Rock Circle  
Suite 700  
Rockville, MD 20850  
USA

**Medication Guide**  
**LUPKYNIS® (loop kye' nis)**

(voclosporin) capsules, for oral use

Read this Medication Guide before you start taking LUPKYNIS and each time you get a refill. There may be new information. This information does not take the place of talking with your healthcare provider about your medical condition or your treatment. If you have any questions about LUPKYNIS, ask your healthcare provider or pharmacist.

**What is the most important information I should know about LUPKYNIS?**

**LUPKYNIS can cause serious side effects, including:**

- **Increased risk of cancer.** People who take LUPKYNIS have an increased risk of getting certain kinds of cancer, including skin cancer and cancer of the lymph glands (lymphoma).
- **Increased risk of infection.** LUPKYNIS is a medicine that affects your immune system. LUPKYNIS can lower the ability of your immune system to fight infections. Serious infections can happen in people receiving LUPKYNIS that can lead to hospitalizations and can cause death. **Call your healthcare provider right away if you have symptoms of an infection such as:**
  - fever
  - cough or flu-like symptoms
  - warm, red, or painful areas on your skin
  - sweats or chills
  - muscle aches

See “**What are the possible side effects of LUPKYNIS?**” for more information about side effects.

**What is LUPKYNIS?**

- LUPKYNIS is a prescription medicine used with other medicines to treat adults with active lupus nephritis.
- LUPKYNIS should not be taken with a medicine called cyclophosphamide. Talk with your healthcare provider if you are not sure if you take this medicine.

**Do not take LUPKYNIS:**

- with medicines known as strong CYP3A4 inhibitors such as ketoconazole, itraconazole, and clarithromycin.
- if you are allergic to voclosporin or any of the ingredients in LUPKYNIS. See the end of this Medication Guide for a complete list of ingredients in LUPKYNIS.

**Before you take LUPKYNIS, tell your healthcare provider about all your medical conditions, including if you:**

- plan to receive any vaccines. You should not receive any live vaccines during treatment with LUPKYNIS. Ask your healthcare provider if you are not sure if your vaccine is a live vaccine. Other vaccines may not work as well during treatment with LUPKYNIS.
- have or have had liver, kidney, or heart problems.
- have high blood pressure.
- are pregnant or plan to become pregnant when taking LUPKYNIS. LUPKYNIS may harm your unborn baby.
  - When taking LUPKYNIS in combination with mycophenolate mofetil, you should also read the Medication Guide for mycophenolate mofetil for important pregnancy information.
- are breastfeeding or plan to breastfeed. LUPKYNIS can pass into breastmilk. You and your healthcare provider should decide if you will take LUPKYNIS while you are breastfeeding.

**Tell your healthcare provider about all the medicines you take**, including prescription and over-the-counter medicines, vitamins, and herbal supplements. LUPKYNIS may affect the way other medicines work, and other medicines may affect how LUPKYNIS works.

**How should I take LUPKYNIS?**

- Take LUPKYNIS exactly as your healthcare provider tells you to take it.
- Your healthcare provider may change your dose, if needed. **Do not** stop taking or change your dose of LUPKYNIS without talking to your healthcare provider.
- Swallow LUPKYNIS capsules whole. **Do not** break, crush, chew or dissolve LUPKYNIS capsules before swallowing. If you cannot swallow LUPKYNIS capsules whole, tell your healthcare provider.
- Take LUPKYNIS on an empty stomach, either 1 hour before or 2 hours after a meal and as close to 12 hours between doses as possible. **Do not** take your doses of LUPKYNIS less than 8 hours apart. If a dose is missed, take it as soon as possible within 4 hours after missing the dose. If more than 4 hours has passed, skip the missed dose and take the next dose at the regular time. **Do not** take 2 doses at the same time.
- If you take too much LUPKYNIS, call your healthcare provider or go to the nearest hospital emergency room right away.

**What should I avoid while taking LUPKYNIS?**

- Live vaccines such as flu vaccine through your nose, measles, mumps, rubella, polio by mouth, BCG (TB vaccine), yellow fever, chicken pox (varicella), or typhoid.
- Exposure to sunlight and UV light such as tanning machines. Wear protective clothing and use a sunscreen.
- You should not eat grapefruit or drink grapefruit juice while taking LUPKYNIS.

### What are the possible side effects of LUPKYNIS?

#### LUPKYNIS may cause serious side effects, including:

- See “**What is the most important information I should know about LUPKYNIS?**”
- **kidney problems.** Kidney problems are common side effects of LUPKYNIS and may be serious. Your healthcare provider may do certain tests to check your kidney function while you take LUPKYNIS.
- **high blood pressure.** High blood pressure is a common side effect of LUPKYNIS and may be serious. Your healthcare provider will monitor your blood pressure while you take LUPKYNIS and may ask you to check your blood pressure at home.
- **nervous system problems.** Nervous system problems are a common side effect of LUPKYNIS and may be serious. Call your healthcare provider or go to the nearest hospital emergency room right away if you get any of these symptoms while taking LUPKYNIS. These could be signs of serious nervous system problems:
  - confusion
  - numbness and tingling
  - seizures
  - changes in alertness
  - headache
  - vision changes
  - muscle tremors
- **high levels of potassium in your blood.** Your healthcare provider may do certain tests to check your potassium levels while you take LUPKYNIS.
- **a serious heart rhythm problem (QT prolongation).**
- **severe low red blood cell count (anemia).**

The most common side effects of LUPKYNIS are:

- diarrhea
- urinary tract infection
- heartburn
- headache
- stomach pain
- loss of hair (alopecia)
- cough

These are not all the possible side effects of LUPKYNIS.

Call your doctor for medical advice about side effects. You may report side effects to FDA at 1-800-FDA-1088.

You may also report side effects to [www.fda.gov/medwatch](http://www.fda.gov/medwatch).

### How should I store LUPKYNIS?

- Store LUPKYNIS at room temperature between 68°F to 77°F (20°C to 25°C).
- Do not put LUPKYNIS in another container. **Keep capsules in their original package until you are ready to take them.**
- **Keep LUPKYNIS and all medicines out of the reach of children.**

### General information about the safe and effective use of LUPKYNIS

Medicines are sometimes prescribed for purposes other than those listed in a Medication Guide. Do not use LUPKYNIS for a condition for which it was not prescribed. Do not give LUPKYNIS to other people, even if they have the same symptoms that you have. It may harm them. You can ask your pharmacist or healthcare provider for information about LUPKYNIS that is written for health professionals.

### What are the ingredients in LUPKYNIS?

**Active ingredient:** voclosporin

**Inactive ingredients:** alcohol, Vitamin E polyethylene glycol succinate, polysorbate 40, medium-chain triglycerides, gelatin

Manufactured for: Aurinia Pharmaceuticals Inc., Edmonton, AB T5L 4S6 Canada  
Distributed by: Aurinia Pharma U.S., Inc., Rockville, MD 20850 USA

For more information, go to [www.LUPKYNIS.com](http://www.LUPKYNIS.com) or call 1-833-AURINIA

This Medication Guide has been approved by the U.S. Food and Drug Administration

Issued: 4/2024