

HIGHLIGHTS OF PRESCRIBING INFORMATION

These highlights do not include all the information needed to use VEKLURY safely and effectively. See full prescribing information for VEKLURY.

VEKLURY® (remdesivir) for injection, for intravenous use
VEKLURY® (remdesivir) injection, for intravenous use
Initial U.S. Approval: 2020

RECENT MAJOR CHANGES

Indications and Usage (1) 12/2022

INDICATIONS AND USAGE

VEKLURY is a severe acute respiratory syndrome coronavirus 2 (SARS-CoV-2) nucleotide analog RNA polymerase inhibitor indicated for the treatment of coronavirus disease 2019 (COVID-19) in adults and pediatric patients (28 days of age and older and weighing at least 3 kg) who are:

- Hospitalized, or
- Not hospitalized and have mild-to-moderate COVID-19, and are at high risk for progression to severe COVID-19, including hospitalization or death. (1)

DOSAGE AND ADMINISTRATION

- The only approved dosage form of VEKLURY for pediatric patients weighing 3 kg to less than 40 kg is VEKLURY for injection (supplied as 100 mg lyophilized powder in vial). (2.1)
- Testing: In all patients, before starting VEKLURY and during treatment as clinically appropriate, perform renal and hepatic laboratory testing. Assess prothrombin time before starting VEKLURY and monitor as clinically appropriate. (2.2)
- Recommended dosage:
 - Adults and pediatric patients weighing at least 40 kg: a single loading dose of VEKLURY 200 mg on Day 1 followed by once-daily maintenance doses of VEKLURY 100 mg from Day 2 via intravenous infusion. (2.3)
 - Pediatric patients 28 days of age and older and weighing 3 kg to less than 40 kg: a single loading dose of VEKLURY 5 mg/kg on Day 1 followed by once-daily maintenance doses of VEKLURY 2.5 mg/kg from Day 2 via intravenous infusion. (2.3)
- Hospitalized patients: The treatment course of VEKLURY should be initiated as soon as possible after diagnosis of symptomatic COVID-19 has been made. (2.3)
 - For hospitalized patients requiring invasive mechanical ventilation and/or ECMO, the recommended total treatment duration is 10 days. (2.3)
 - For hospitalized patients not requiring invasive mechanical ventilation and/or ECMO, the recommended treatment duration is 5 days. If a patient does not demonstrate clinical improvement, treatment may be extended for up to 5 additional days for a total treatment duration of up to 10 days. (2.3)
- Non-hospitalized patients: The treatment course of VEKLURY should be initiated as soon as possible after diagnosis of symptomatic COVID-19 has been made and within 7 days of symptom onset. (2.3)
 - For non-hospitalized patients diagnosed with mild-to-moderate COVID-19 who are at high risk for progression to severe COVID-19, including hospitalization or death, the recommended total treatment duration is 3 days (2.3).

- Renal impairment: VEKLURY is not recommended in patients with eGFR less than 30 mL/min. (2.4)
- Administer VEKLURY via intravenous (IV) infusion over 30 to 120 minutes. (2.5, 2.6)
- Dose preparation and administration: Refer to the full prescribing information for further details for both formulations. (2.5, 2.6)
- Storage of prepared dosages: VEKLURY contains no preservative. (2.7)

DOSAGE FORMS AND STRENGTHS

- For injection: 100 mg of remdesivir as a lyophilized powder, in a single-dose vial. (3)
- Injection: 100 mg/20 mL (5 mg/mL) remdesivir, in a single-dose vial. (3)

CONTRAINDICATIONS

VEKLURY is contraindicated in patients with a history of clinically significant hypersensitivity reactions to VEKLURY or any components of the product. (4)

WARNINGS AND PRECAUTIONS

- Hypersensitivity including infusion-related and anaphylactic reactions: Hypersensitivity reactions have been observed during and following administration of VEKLURY. Slower infusion rates, with a maximum infusion time of up to 120 minutes, can be considered to potentially prevent signs and symptoms of hypersensitivity. Monitor patients during infusion and observe patients for at least one hour after infusion is complete for signs and symptoms of hypersensitivity as clinically appropriate. If signs and symptoms of a clinically significant hypersensitivity reaction occur, immediately discontinue administration of VEKLURY and initiate appropriate treatment. (5.1)
- Increased risk of transaminase elevations: Transaminase elevations have been observed in healthy volunteers and have also been reported in patients with COVID-19 who received VEKLURY. Perform hepatic laboratory testing in all patients before starting VEKLURY and while receiving VEKLURY as clinically appropriate. Consider discontinuing VEKLURY if ALT levels increase to greater than 10 times the upper limit of normal. Discontinue VEKLURY if ALT elevation is accompanied by signs or symptoms of liver inflammation. (5.2)
- Risk of reduced antiviral activity when coadministered with chloroquine phosphate or hydroxychloroquine sulfate: Coadministration of VEKLURY and chloroquine phosphate or hydroxychloroquine sulfate is not recommended based on data from cell culture experiments demonstrating a potential antagonistic effect of chloroquine on the intracellular metabolic activation and antiviral activity of VEKLURY. (5.3)

ADVERSE REACTIONS

The most common adverse reactions (incidence greater than or equal to 5%, all grades) observed with treatment with VEKLURY are nausea, ALT increased, and AST increased. (6.1)

To report SUSPECTED ADVERSE REACTIONS, contact Gilead Sciences, Inc. at 1-800-GILEAD-5 or FDA at 1-800-FDA-1088 or www.fda.gov/medwatch.

See 17 for PATIENT COUNSELING INFORMATION and FDA-approved patient labeling.

Revised: 06/2023

FULL PRESCRIBING INFORMATION: CONTENTS*

1 INDICATIONS AND USAGE

2 DOSAGE AND ADMINISTRATION

- 2.1 Dosage and Administration Overview
- 2.2 Testing Before Starting and During Treatment with VEKLURY
- 2.3 Recommended Dosage in Adults and Pediatric Patients 28 Days of Age and Older and Weighing at Least 3 kg
- 2.4 Renal Impairment
- 2.5 Dosage Preparation and Administration in Adults and Pediatric Patients Weighing at Least 40 kg
- 2.6 Dosage Preparation and Administration in Pediatric Patients 28 Days of Age and Older and Weighing 3 kg to Less Than 40 kg
- 2.7 Storage of Prepared Dosages

3 DOSAGE FORMS AND STRENGTHS

4 CONTRAINDICATIONS

5 WARNINGS AND PRECAUTIONS

- 5.1 Hypersensitivity Including Infusion-related and Anaphylactic Reactions
- 5.2 Increased Risk of Transaminase Elevations
- 5.3 Risk of Reduced Antiviral Activity When Coadministered with Chloroquine Phosphate or Hydroxychloroquine Sulfate

6 ADVERSE REACTIONS

- 6.1 Clinical Trials Experience

7 DRUG INTERACTIONS

8 USE IN SPECIFIC POPULATIONS

- 8.1 Pregnancy
- 8.2 Lactation
- 8.4 Pediatric Use

- 8.5 Geriatric Use
- 8.6 Renal Impairment
- 8.7 Hepatic Impairment

10 OVERDOSAGE

11 DESCRIPTION

12 CLINICAL PHARMACOLOGY

- 12.1 Mechanism of Action
- 12.2 Pharmacodynamics
- 12.3 Pharmacokinetics
- 12.4 Microbiology

13 NONCLINICAL TOXICOLOGY

- 13.1 Carcinogenesis, Mutagenesis, Impairment of Fertility
- 13.2 Animal Toxicology and/or Pharmacology

14 CLINICAL STUDIES

- 14.1 Description of Clinical Trials
- 14.2 NIAID ACTT-1 Study in Hospitalized Subjects with Mild/Moderate and Severe COVID-19
- 14.3 Study GS-US-540-5773 in Hospitalized Subjects with Severe COVID-19
- 14.4 Study GS-US-540-5774 in Hospitalized Subjects with Moderate COVID-19
- 14.5 Study GS-US-540-9012 in Non-Hospitalized Subjects with Mild-to-Moderate COVID-19 and at High Risk for Progression to Severe Disease
- 14.6 Study GS-US-540-5823 in Hospitalized Pediatric Subjects with COVID-19

16 HOW SUPPLIED/STORAGE AND HANDLING

17 PATIENT COUNSELING INFORMATION

* Sections or subsections omitted from the full prescribing information are not listed.

FULL PRESCRIBING INFORMATION

1 INDICATIONS AND USAGE

VEKLURY is indicated for the treatment of coronavirus disease 2019 (COVID-19) in adults and pediatric patients (28 days of age and older and weighing at least 3 kg) who are [see *Clinical Studies (14)*]:

- Hospitalized, or
- Not hospitalized and have mild-to-moderate COVID-19, and are at high risk for progression to severe COVID-19, including hospitalization or death.

2 DOSAGE AND ADMINISTRATION

2.1 Dosage and Administration Overview

- VEKLURY may only be administered in settings in which healthcare providers have immediate access to medications to treat a severe infusion or hypersensitivity reaction, such as anaphylaxis, and the ability to activate the emergency medical system (EMS), as necessary [see *Dosage and Administration (2.5, 2.6), Warnings and Precautions (5.1)*].
- Administer VEKLURY for the treatment of COVID-19 in adults and pediatric patients (28 days of age and older and weighing at least 3 kg) by intravenous infusion only. Do not administer by any other route.
- There are TWO different formulations of VEKLURY:
 - VEKLURY for injection (supplied as 100 mg lyophilized powder in vial) must be reconstituted with Sterile Water for Injection prior to diluting with 0.9% sodium chloride injection.
 - **The only approved dosage form of VEKLURY for pediatric patients weighing 3 kg to less than 40 kg is VEKLURY for injection (supplied as 100 mg lyophilized powder in vial).**
 - VEKLURY injection (supplied as 100 mg/20 mL [5 mg/mL] solution in vial) must be further diluted in 250 mL of 0.9% sodium chloride injection infusion bag.
- There are differences in the way the two formulations are prepared. Carefully follow the product-specific preparation instructions below [see *Dosage and Administration (2.5, 2.6)*].

2.2 Testing Before Starting and During Treatment with VEKLURY

Determine eGFR in all patients before starting VEKLURY and monitor while receiving VEKLURY as clinically appropriate [see *Dosage and Administration (2.4) and Use in Specific Populations (8.4, 8.6)*].

Perform hepatic laboratory testing in all patients before starting VEKLURY and while receiving VEKLURY as clinically appropriate [see *Warnings and Precautions (5.2) and Use in Specific Populations (8.7)*].

Determine prothrombin time in all patients before starting VEKLURY and monitor while receiving VEKLURY as clinically appropriate [see *Adverse Reactions (6.1)*].

2.3 Recommended Dosage in Adults and Pediatric Patients 28 Days of Age and Older and Weighing at Least 3 kg

- The recommended dosage for adults and pediatric patients weighing at least 40 kg is a single loading dose of VEKLURY 200 mg on Day 1 via intravenous infusion followed by once-daily maintenance doses of VEKLURY 100 mg from Day 2 via intravenous infusion.
- The recommended dosage for pediatric patients 28 days of age and older and weighing 3 kg to less than 40 kg is a single loading dose of VEKLURY 5 mg/kg on Day 1 via intravenous infusion followed by once-daily maintenance doses of VEKLURY 2.5 mg/kg from Day 2 via intravenous infusion.

Hospitalized patients:

The treatment course of VEKLURY should be initiated as soon as possible after diagnosis of symptomatic COVID-19 has been made.

- The recommended total treatment duration for hospitalized patients requiring invasive mechanical ventilation and/or extracorporeal membrane oxygenation (ECMO) is 10 days.
- The recommended treatment duration for hospitalized patients not requiring invasive mechanical ventilation and/or ECMO is 5 days. If a patient does not demonstrate clinical improvement, treatment may be extended for up to 5 additional days for a total treatment duration of up to 10 days.

Non-hospitalized patients:

The treatment course of VEKLURY should be initiated as soon as possible after diagnosis of symptomatic COVID-19 has been made and within 7 days of symptom onset.

- The recommended total treatment duration for non-hospitalized patients diagnosed with mild-to-moderate COVID-19 who are at high risk for progression to severe COVID-19, including hospitalization or death, is 3 days.

VEKLURY must be diluted prior to intravenous infusion. Refer to Dosage and Administration (2.5, 2.6) for detailed preparation and administration instructions.

2.4 Renal Impairment

VEKLURY is not recommended in patients with eGFR less than 30 mL per minute [see *Dosage and Administration (2.2) and Use in Specific Populations (8.4, 8.6)*].

2.5 Dosage Preparation and Administration in Adults and Pediatric Patients Weighing at Least 40 kg

There are differences in the way the two formulations are prepared. Carefully follow the product-specific preparation instructions below.

VEKLURY for Injection (Supplied as 100 mg Lyophilized Powder in Vial)

Reconstitution Instructions

Remove the required number of single-dose vial(s) from storage. For each vial:

- Aseptically reconstitute VEKLURY lyophilized powder by adding 19 mL of Sterile Water for Injection using a suitably sized syringe and needle per vial.
- Only use Sterile Water for Injection to reconstitute VEKLURY lyophilized powder.
- Discard the vial if a vacuum does not pull the Sterile Water for Injection into the vial.
- Immediately shake the vial for 30 seconds.
- Allow the contents of the vial to settle for 2 to 3 minutes. A clear, colorless to yellow solution, free of visible particles, should result.
- If the contents of the vial are not completely dissolved, shake the vial again for 30 seconds and allow the contents to settle for 2 to 3 minutes. Repeat this procedure as necessary until the contents of the vial are completely dissolved. Discard the vial if the contents are not completely dissolved.
- Following reconstitution, each vial contains 100 mg/20 mL (5 mg/mL) of remdesivir solution.
- Use reconstituted product immediately to prepare the diluted drug product [see *Dosage and Administration* (2.7)].

Dilution Instructions

Care should be taken during admixture to prevent inadvertent microbial contamination. As there is no preservative or bacteriostatic agent present in this product, aseptic technique must be used in preparation of the final parenteral solution. It is always recommended to administer intravenous medication immediately after preparation when possible.

- Reconstituted VEKLURY for injection, containing 100 mg/20 mL remdesivir solution, must be further diluted in either a 100 mL or 250 mL 0.9% sodium chloride injection infusion bag. Refer to Table 1 for instructions.

Table 1 Recommended Dilution Instructions—Reconstituted VEKLURY for Injection Lyophilized Powder in Adults and Pediatric Patients Weighing at Least 40 kg

VEKLURY dose	0.9% sodium chloride injection infusion bag volume to be used	Volume to be withdrawn and discarded from 0.9% sodium chloride injection infusion bag	Required volume of reconstituted VEKLURY for injection
Loading dose 200 mg (2 vials)	250 mL	40 mL	40 mL (2 × 20 mL)
	100 mL	40 mL	40 mL (2 × 20 mL)
Maintenance dose 100 mg (1 vial)	250 mL	20 mL	20 mL
	100 mL	20 mL	20 mL

- Withdraw and discard the required volume of 0.9% sodium chloride injection from the bag following instructions in Table 1, using an appropriately sized syringe and needle.
- Withdraw the required volume of reconstituted VEKLURY for injection from the VEKLURY vial following instructions in Table 1, using an appropriately sized syringe. Discard any unused portion remaining in the reconstituted vial.
- Transfer the required volume of reconstituted VEKLURY for injection to the selected infusion bag.
- Gently invert the bag 20 times to mix the solution in the bag. Do not shake.
- The prepared infusion solution can be stored for 24 hours at room temperature (20°C to 25°C [68°F to 77°F]) or 48 hours at refrigerated temperature (2°C to 8°C [36°F to 46°F]) prior to administration.

Administration Instructions

Do not administer the prepared diluted solution simultaneously with any other medication. The compatibility of VEKLURY injection with intravenous solutions and medications other than 0.9% sodium chloride injection, USP is not known. Administer VEKLURY via intravenous infusion over 30 to 120 minutes.

Administration should be under conditions where management of severe hypersensitivity reactions, such as anaphylaxis, is possible. Monitor patients during infusion and observe patients for at least one hour after infusion is complete for signs and symptoms of hypersensitivity as clinically appropriate [see *Warnings and Precautions (5.1)*].

Administer the diluted solution with the infusion rate described in Table 2.

Table 2 Recommended Rate of Infusion—Diluted VEKLURY for Injection Lyophilized Powder in Adults and Pediatric Patients Weighing at Least 40 kg

Infusion bag volume	Infusion time	Rate of infusion
250 mL	30 min	8.33 mL/min
	60 min	4.17 mL/min
	120 min	2.08 mL/min
100 mL	30 min	3.33 mL/min
	60 min	1.67 mL/min
	120 min	0.83 mL/min

VEKLURY Injection (Supplied as 100 mg/20 mL [5 mg/mL] Solution in Vial)

Dilution Instructions

Care should be taken during admixture to prevent inadvertent microbial contamination. As there is no preservative or bacteriostatic agent present in this product, aseptic technique must be used in preparation of the final parenteral solution. It is always recommended to administer intravenous medication immediately after preparation when possible.

- Remove the required number of single-dose vial(s) from storage. Each vial contains 100 mg/20 mL of remdesivir. For each vial:
- Equilibrate to room temperature (20°C to 25°C [68°F to 77°F]). Sealed vials can be stored up to 12 hours at room temperature prior to dilution.
- Inspect the vial to ensure the container closure is free from defects and the solution is free of particulate matter.
- VEKLURY injection must be diluted in an infusion bag containing 250 mL of 0.9% sodium chloride injection only. Refer to Table 3 for instructions.

Table 3 Recommended Dilution Instructions—VEKLURY Injection (Supplied as Solution in Vial) in Adults and Pediatric Patients Weighing at Least 40 kg

VEKLURY dose	0.9% sodium chloride injection infusion bag volume to be used	Volume to be withdrawn and discarded from 0.9% sodium chloride injection infusion bag	Required volume of VEKLURY injection
Loading dose 200 mg (2 vials)	250 mL	40 mL	40 mL (2 × 20 mL)
Maintenance dose 100 mg (1 vial)		20 mL	20 mL

- Withdraw and discard the required volume of 0.9% sodium chloride injection from the bag following instructions in Table 3, using an appropriately sized syringe and needle.
- Withdraw the required volume of VEKLURY injection from the VEKLURY vial following instructions in Table 3, using an appropriately sized syringe.
- Pull the syringe plunger rod back to fill the syringe with approximately 10 mL of air.
- Inject the air into the VEKLURY injection vial above the level of the solution.
- Invert the vial and withdraw the required volume of VEKLURY injection solution into the syringe. The last 5 mL of solution requires more force to withdraw.
- Transfer the required volume of VEKLURY injection to the infusion bag.
- Gently invert the bag 20 times to mix the solution in the bag. Do not shake.
- The prepared infusion solution is stable for 24 hours at room temperature (20°C to 25°C [68°F to 77°F]) or 48 hours at refrigerated temperature (2°C to 8°C [36°F to 46°F]).

Administration Instructions

Do not administer the prepared diluted solution simultaneously with any other medication. The compatibility of VEKLURY injection with intravenous solutions and medications other than 0.9% sodium chloride injection, USP is not known. Administer VEKLURY via intravenous infusion over 30 to 120 minutes.

Administration should be under conditions where management of severe hypersensitivity reactions, such as anaphylaxis, is possible. Monitor patients during infusion and observe patients for at least one hour after infusion is complete for signs and symptoms of hypersensitivity as clinically appropriate [see *Warnings and Precautions* (5.1)].

Administer the diluted solution with the infusion rate described in Table 4.

Table 4 Recommended Rate of Infusion—Diluted VEKLURY Injection Solution in Adults and Pediatric Patients Weighing at Least 40 kg

Infusion bag volume	Infusion time	Rate of infusion
250 mL	30 min	8.33 mL/min
	60 min	4.17 mL/min
	120 min	2.08 mL/min

2.6 Dosage Preparation and Administration in Pediatric Patients 28 Days of Age and Older and Weighing 3 kg to Less Than 40 kg

The only approved dosage form of VEKLURY for pediatric patients 28 days of age and older and weighing 3 kg to less than 40 kg is VEKLURY for injection (supplied as 100 mg lyophilized powder in vial). Carefully follow the product-specific preparation instructions below.

Use VEKLURY for Injection (Supplied as 100 mg Lyophilized Powder in Vial) only.

Reconstitution Instructions

Remove the required number of single-dose vial(s) from storage. For each vial:

- Aseptically reconstitute VEKLURY lyophilized powder by adding 19 mL of Sterile Water for Injection using a suitably sized syringe and needle per vial.
- Only use Sterile Water for Injection to reconstitute VEKLURY lyophilized powder.
- Discard the vial if a vacuum does not pull the Sterile Water for Injection into the vial.
- Immediately shake the vial for 30 seconds.
- Allow the contents of the vial to settle for 2 to 3 minutes. A clear, colorless to yellow solution, free of visible particles, should result.
- If the contents of the vial are not completely dissolved, shake the vial again for 30 seconds and allow the contents to settle for 2 to 3 minutes. Repeat this procedure as necessary until the contents of the vial are completely dissolved. Discard the vial if the contents are not completely dissolved.
- Following reconstitution, each vial contains 100 mg/20 mL (5 mg/mL) of remdesivir solution.
- Use reconstituted product immediately to prepare the diluted drug product [*see Dosage and Administration (2.7)*].

Dilution Instructions

- For pediatric patients 28 days of age and older and weighing 3 kg to less than 40 kg, the 100 mg/20 mL (5 mg/mL) remdesivir reconstituted solution should be further diluted to a fixed concentration of 1.25 mg/mL using 0.9% sodium chloride injection.
- The final required infusion volume concentration of 1.25 mg/mL remdesivir diluted solution for infusion is based on the pediatric weight-based dosing regimens of 5 mg/kg for the Loading Dose and 2.5 mg/kg for each Maintenance Dose.
- Small 0.9% sodium chloride injection infusion bags (e.g., 25, 50, or 100 mL) or an appropriately sized syringe should be used for pediatric dosing. The recommended dose is administered via

intravenous infusion in a total volume dependent on the dose to yield the target remdesivir concentration of 1.25 mg/mL.

- A syringe and syringe pump may be used for infusion volumes less than 50 mL.

Infusion with IV Bag

- Determine the total infusion volume needed to achieve a final infusion volume concentration of 1.25 mg/mL of remdesivir diluted solution based on the patient's calculated dose.
- Select an appropriately sized infusion bag (either prefilled with 0.9% sodium chloride injection or empty) to prepare VEKLURY diluted solution.
- If using a prefilled 0.9% sodium chloride injection infusion bag, withdraw and discard the amount of diluent equal to the volume of reconstituted VEKLURY solution needed per patient's dose plus a quantity sufficient to achieve a 1.25 mg/mL final volume concentration of remdesivir diluted solution.
- Withdraw the required volume of reconstituted VEKLURY solution into an appropriately sized syringe.
- Transfer the required volume of reconstituted VEKLURY solution to the 0.9% sodium chloride injection infusion bag.
- Gently invert the bag 20 times to mix the solution in the bag. Do not shake.
- If using an empty infusion bag, transfer the required volume of reconstituted VEKLURY solution to the bag, followed by a volume of 0.9% sodium chloride injection sufficient to achieve a 1.25 mg/mL final volume concentration of remdesivir diluted solution.
- The prepared infusion solution is stable for 24 hours at room temperature (20°C to 25°C [68°F to 77°F]) or 48 hours at refrigerated temperature (2°C to 8°C [36°F to 46°F]).

Infusion with Syringe

- Determine the total infusion volume needed to achieve a final infusion volume concentration of 1.25 mg/mL of remdesivir diluted solution based on patient's calculated dose.
- Select an appropriately sized syringe equal to or larger than the calculated total infusion volume of 1.25 mg/mL remdesivir solution needed.
- Withdraw the required volume of reconstituted VEKLURY solution from the vial into the syringe based on patient's calculated dose, followed by the required volume of 0.9% sodium chloride injection needed to achieve a 1.25 mg/mL final volume concentration of remdesivir diluted solution.
- Gently invert the syringe 20 times to mix the solution in the syringe. Do not shake.
- The prepared diluted solution should be used immediately.

Administration Instructions

The prepared diluted solution should not be administered simultaneously with any other medication. The compatibility of VEKLURY with IV solutions and medications other than 0.9% sodium chloride injection, USP is not known. Administer VEKLURY via intravenous infusion over 30 to 120 minutes. The rate of infusion (mL/min) should be calculated based on the total infusion volume and total infusion time.

Administration should be under conditions where management of severe hypersensitivity reactions, such as anaphylaxis, is possible. Monitor patients during infusion and observe patients for at least

one hour after infusion is complete for signs and symptoms of hypersensitivity as clinically appropriate [see *Warnings and Precautions (5.1)*].

2.7 Storage of Prepared Dosages

VEKLURY for Injection (Supplied as Lyophilized Powder in Vial)

After reconstitution, use vials immediately to prepare diluted solution. The diluted VEKLURY solution in the infusion bags can be stored up to 24 hours at room temperature (20°C to 25°C [68°F to 77°F]) prior to administration or 48 hours at refrigerated temperature (2°C to 8°C [36°F to 46°F]).

VEKLURY Injection (Supplied as Solution in Vial)

Store VEKLURY injection after dilution in the infusion bags up to 24 hours at room temperature (20°C to 25°C [68°F to 77°F]) or 48 hours at refrigerated temperature (2°C to 8°C [36°F to 46°F]).

IMPORTANT:

This product contains no preservative. Any unused portion of a single-dose VEKLURY vial should be discarded after a diluted solution is prepared.

3 DOSAGE FORMS AND STRENGTHS

- VEKLURY for injection, 100 mg, available as a sterile, preservative-free white to off-white to yellow lyophilized powder in single-dose vial for reconstitution.
- VEKLURY injection, 100 mg/20 mL (5 mg/mL), available as a clear, colorless to yellow solution, free of visible particles in single-dose vial.

4 CONTRAINDICATIONS

VEKLURY is contraindicated in patients with a history of clinically significant hypersensitivity reactions to VEKLURY or any components of the product [see *Warnings and Precautions (5.1)*].

5 WARNINGS AND PRECAUTIONS

5.1 Hypersensitivity Including Infusion-related and Anaphylactic Reactions

Hypersensitivity reactions, including infusion-related and anaphylactic reactions, have been observed during and following administration of VEKLURY; most occurred within one hour. Signs and symptoms may include hypotension, hypertension, tachycardia, bradycardia, hypoxia, fever, dyspnea, wheezing, angioedema, rash, nausea, diaphoresis, and shivering. Slower infusion rates, with a maximum infusion time of up to 120 minutes, can be considered to potentially prevent these signs and symptoms. Monitor patients during infusion and observe patients for at least one hour after infusion is complete for signs and symptoms of hypersensitivity as clinically appropriate. If signs and symptoms of a clinically significant hypersensitivity reaction occur, immediately discontinue administration of VEKLURY and initiate appropriate treatment. The use of VEKLURY is

contraindicated in patients with known hypersensitivity to VEKLURY or any components of the product [see *Contraindications (4)*].

5.2 Increased Risk of Transaminase Elevations

Transaminase elevations have been observed in healthy volunteers who received 200 mg of VEKLURY followed by 100 mg doses for up to 10 days; the transaminase elevations were mild (Grade 1) to moderate (Grade 2) in severity and resolved upon discontinuation of VEKLURY. Transaminase elevations have also been reported in patients with COVID-19 who received VEKLURY [see *Adverse Reactions (6.1)*]. Because transaminase elevations have been reported as a clinical feature of COVID-19, and the incidence was similar in patients receiving placebo versus VEKLURY in clinical trials of VEKLURY, discerning the contribution of VEKLURY to transaminase elevations in patients with COVID-19 can be challenging.

Perform hepatic laboratory testing in all patients before starting VEKLURY and while receiving VEKLURY as clinically appropriate [see *Dosage and Administration (2.1)* and *Use in Specific Populations (8.7)*].

- Consider discontinuing VEKLURY if ALT levels increase to greater than 10 times the upper limit of normal.
- Discontinue VEKLURY if ALT elevation is accompanied by signs or symptoms of liver inflammation.

5.3 Risk of Reduced Antiviral Activity When Coadministered with Chloroquine Phosphate or Hydroxychloroquine Sulfate

Coadministration of VEKLURY and chloroquine phosphate or hydroxychloroquine sulfate is not recommended based on data from cell culture experiments demonstrating a potential antagonistic effect of chloroquine on the intracellular metabolic activation and antiviral activity of VEKLURY [see *Drug Interactions (7)* and *Microbiology (12.4)*].

6 ADVERSE REACTIONS

The following adverse reactions are discussed in other sections of the labeling:

- Hypersensitivity Including Infusion-related and Anaphylactic Reactions [see *Warnings and Precautions (5.1)*]
- Increased Risk of Transaminase Elevations [see *Warnings and Precautions (5.2)*]

6.1 Clinical Trials Experience

Because clinical trials are conducted under widely varying conditions, adverse reaction rates observed in the clinical trials of a drug cannot be directly compared to rates in the clinical trials of another drug and may not reflect the rates observed in practice.

Clinical Trials in Adult Subjects

The safety of VEKLURY is based on data from three Phase 3 studies in 1,313 hospitalized adult subjects with COVID-19, one Phase 3 study in 279 non-hospitalized adult and pediatric subjects (12 years of age and older weighing at least 40 kg) with mild-to-moderate COVID-19, four Phase 1 studies in 131 healthy adults, and from patients with COVID-19 who received VEKLURY under the Emergency Use Authorization or in a compassionate use program.

Clinical Trials Experience in Adults with COVID-19

NIAID ACTT-1 was a randomized, double-blind, placebo-controlled clinical trial in hospitalized subjects with mild, moderate, and severe COVID-19 treated with VEKLURY (n=532) or placebo (n=516) for up to 10 days. Subjects treated with VEKLURY received 200 mg on Day 1 and 100 mg once daily on subsequent days [see *Clinical Studies (14.1)*]. The collection of adverse event data in this trial was limited to severe (Grade 3) or potentially life-threatening (Grade 4) adverse events, serious adverse events, adverse events leading to study drug discontinuation, and moderate (Grade 2) severity or higher hypersensitivity reactions. Rates of adverse reactions (\geq Grade 3), serious adverse reactions, and adverse reactions leading to treatment discontinuation are presented in Table 5.

Table 5 Summary of Adverse Reaction Rates in Hospitalized Subjects with Mild, Moderate, or Severe COVID-19 in NIAID ACTT-1

Types of Adverse Reactions	VEKLURY N=532 n (%)	Placebo N=516 n (%)
Adverse reactions, Grades \geq 3	41 (8%)	46 (9%)
Serious adverse reactions	2 (0.4%) ^a	3 (0.6%)
Adverse reactions leading to treatment discontinuation	11 (2%) ^b	15 (3%)

a. Seizure (n=1), infusion-related reaction (n=1).

b. Seizure (n=1), infusion-related reaction (n=1), transaminases increased (n=3), ALT increased and AST increased (n=1), GFR decreased (n=2), acute kidney injury (n=3).

Study GS-US-540-5773 was a randomized, open-label clinical trial in hospitalized subjects with severe COVID-19 treated with VEKLURY 200 mg on Day 1 and 100 mg once daily for 5 (n=200) or 10 days (n=197). Adverse reactions were reported in 33 (17%) subjects in the 5-day group and 40 (20%) subjects in the 10-day group [see *Clinical Studies (14.2)*]. The most common adverse reactions occurring in at least 5% of subjects in either the VEKLURY 5-day or 10-day group, respectively, were nausea (5% vs 3%), AST increased (3% vs 6%), and ALT increased (2% vs 7%). Rates of any adverse reactions, serious adverse reactions, and adverse reactions leading to treatment discontinuation are presented in Table 6.

Table 6 Summary of Adverse Reaction Rates in Hospitalized Subjects with Severe COVID-19 in Study 5773

Types of Adverse Reactions	VEKLURY 5 Days N=200 n (%)	VEKLURY 10 Days N=197 n (%)
Any adverse reaction, all Grades	33 (17%)	40 (20%)
Serious adverse reactions	3 (2%) ^a	4 (2%) ^a
Adverse reactions leading to treatment discontinuation	5 (3%) ^b	9 (5%) ^b

- a. Transaminases increased (n=5), hepatic enzyme increased (n=1), hypertransaminasaemia (n=1).
b. Transaminases increased (n=4), hepatic enzyme increased (n=2), LFT increased (n=2), hypertransaminasaemia (n=1), ALT increased (n=1), ALT increased and AST increased (n=2), injection site erythema (n=1), rash (n=1).

Study GS-US-540-5774 was a randomized, open-label clinical trial in hospitalized subjects with moderate COVID-19 treated with VEKLURY 200 mg on Day 1 and 100 mg daily for 5 (n=191) or 10 days (n=193), or standard of care (SOC) only (n=200) [see *Clinical Studies (14.3)*]. Adverse reactions were reported in 36 (19%) subjects in the 5-day group and 25 (13%) subjects in the 10-day group. The most common adverse reaction occurring in at least 5% of subjects in the VEKLURY groups was nausea (7% in the 5-day group, 4% in the 10-day group). Rates of any adverse reactions, serious adverse reactions, and adverse reactions leading to treatment discontinuation are presented in Table 7.

Table 7 Summary of Adverse Reaction^a Rates in Hospitalized Subjects with Moderate COVID-19 in Study 5774

Types of Adverse Reactions	VEKLURY 5 Days N=191 n (%)	VEKLURY 10 Days N=193 n (%)
Any adverse reaction, all Grades	36 (19%)	25 (13%)
Serious adverse reactions	1 (<1%) ^b	0
Adverse reactions leading to treatment discontinuation	4 (2%) ^c	4 (2%) ^c

- a. Attribution of events to study drug was not performed for the SOC group.
b. Heart rate decreased.
c. ALT increased (n=2), ALT increased and AST increased (n=1), hypertransaminasaemia (n=1), blood alkaline phosphatase increased (n=1), rash (n=2), heart rate decreased (n=1).

Study GS-US-540-9012 was a randomized, double-blind, placebo-controlled clinical trial in subjects who were non-hospitalized, were symptomatic for COVID-19 for ≤7 days, had confirmed SARS-CoV-2 infection, and had at least one risk factor for progression to hospitalization treated with VEKLURY (n=279; 276 adults and 3 pediatric subjects 12 years of age and older weighing at least 40 kg) or placebo (n=283; 278 adults and 5 pediatric subjects 12 years of age and older weighing at least

40 kg) for 3 days. Of the 279 subjects treated with VEKLURY, 227 subjects received at least one dose of VEKLURY at an outpatient facility, 44 subjects received at least one dose of VEKLURY in a home healthcare setting, and 8 subjects received at least one dose of VEKLURY at a skilled nursing facility. Subjects treated with VEKLURY received 200 mg on Day 1 and 100 mg once daily on subsequent days [see *Clinical Studies (14.4)*]. Adverse reactions (all grades) were reported in 34 (12%) subjects in the VEKLURY group and 25 (9%) subjects in the placebo group. The most common adverse reaction occurring in at least 5% of subjects in the VEKLURY group was nausea (6%). There were no serious adverse reactions or adverse reactions leading to treatment discontinuation in either treatment group. Safety in subjects who received VEKLURY in a home healthcare setting was comparable to that observed in the overall GS-US-540-9012 study population, but these findings are based on limited data.

Less Common Adverse Reactions in Adults from Clinical Trials

Clinically significant adverse reactions that were reported in <2% of subjects exposed to VEKLURY in clinical trials are listed below:

- Hypersensitivity reactions [see *Warnings and Precautions (5.1)*].
- Generalized seizure
- Rash

Laboratory Abnormalities

Study GS-US-399-5505 was a Phase 1, randomized, blinded, placebo-controlled clinical trial in healthy volunteers administered VEKLURY 200 mg on Day 1 and 100 mg for either 4 days or 9 days. Mild (Grade 1, n=8) to moderate (Grade 2, n=1) elevations in ALT were observed in 9 of 20 subjects receiving 10 days of VEKLURY; the elevations in ALT resolved upon discontinuation of VEKLURY. No subjects (0 of 9) who received 5 days of VEKLURY had graded increases in ALT.

The frequencies of laboratory abnormalities (Grades 3-4) occurring in at least 3% of subjects with COVID-19 receiving VEKLURY in Trials NIAID ACTT-1, 5773, and 5774 are presented in Table 8, Table 9, and Table 10, respectively.

Table 8 Laboratory Abnormalities (Grades 3-4) Reported in ≥3% of Hospitalized Subjects with Mild, Moderate, or Severe COVID-19 in NIAID ACTT-1

Laboratory Parameter Abnormality ^a	VEKLURY 10 Days N=532	Placebo N=516
ALT increased	3%	6%
AST increased	6%	8%
Bilirubin increased	2%	5%
Creatinine clearance decreased ^b	18%	20%
Creatinine increased	15%	16%
eGFR decreased	18%	24%
Glucose increased	12%	13%
Hemoglobin decreased	15%	22%
Lymphocytes decreased	11%	18%
Prothrombin time increased	9%	4%

- a. Frequencies are based on treatment-emergent laboratory abnormalities. Graded per Division of AIDS (DAIDS) Table for Grading the Severity of Adult and Pediatric Adverse Events, Version 2.1 dated July 2017.
- b. Based on the Cockcroft-Gault formula.

Table 9 Laboratory Abnormalities (Grades 3-4) Reported in ≥3% of Hospitalized Subjects with Severe COVID-19 in Trial 5773

Laboratory Parameter Abnormality ^a	VEKLURY 5 Days N=200	VEKLURY 10 Days N=197
ALT increased	6%	8%
AST increased	7%	6%
Creatinine clearance decreased ^b	10%	19%
Creatinine increased	5%	15%
Glucose increased	11%	8%
Hemoglobin decreased	6%	8%

- a. Frequencies are based on treatment-emergent laboratory abnormalities. Graded per Division of AIDS (DAIDS) Table for Grading the Severity of Adult and Pediatric Adverse Events, Version 2.1 dated July 2017.
- b. Based on the Cockcroft-Gault formula.

Table 10 Laboratory Abnormalities (Grades 3-4) Reported in ≥3% of Hospitalized Subjects with Moderate COVID-19 in Trial 5774

Laboratory Parameter Abnormality ^a	VEKLURY 5 Days N=191	VEKLURY 10 Days N=193	SOC N=200
ALT increased	2%	3%	8%
Creatinine clearance decreased ^b	2%	5%	8%
Glucose increased	4%	3%	2%
Hemoglobin decreased	3%	1%	6%

SOC=Standard of care.

- a. Frequencies are based on treatment-emergent laboratory abnormalities. Graded per Division of AIDS (DAIDS) Table for Grading the Severity of Adult and Pediatric Adverse Events, Version 2.1 dated July 2017.
- b. Based on the Cockcroft-Gault formula.

The frequencies of laboratory abnormalities (Grades 3-4) occurring in at least 2% of subjects with COVID-19 receiving VEKLURY in Trial GS-US-540-9012 are presented in Table 11.

Table 11 Laboratory Abnormalities (Grades 3-4) Reported in ≥2% of Non-Hospitalized Subjects in Trial 9012

Laboratory Parameter Abnormality ^a	VEKLURY 3 Days N=279	Placebo N=283
Creatinine clearance decreased ^b	6%	2%
Creatinine increased	3%	1%
Glucose increased	6%	6%
Lymphocytes decreased	2%	1%
Prothrombin time increased	1%	2%

- a. Frequencies are based on treatment-emergent laboratory abnormalities. Graded per Division of AIDS (DAIDS) Table for Grading the Severity of Adult and Pediatric Adverse Events, Version 2.1 dated July 2017.
- b. Based on the Cockcroft-Gault formula.

Clinical Trials in Pediatric Subjects

Study GS-US-540-5823 was a Phase 2/3, single-arm, open-label clinical trial in hospitalized subjects 28 days of age and older and weighing at least 3 kg with mild, moderate, and severe COVID-19 treated with weight-based VEKLURY (n=53) for up to 10 days [see *Clinical Studies (14.6)*]:

- Subjects ≥12 years and weighing ≥40 kg (n=12) and subjects <12 years and weighing ≥40 kg (n=5): Received 200 mg on Day 1 and 100 mg once daily on subsequent days.
- Subjects ≥28 days and weighing ≥20 to <40 kg (n=12); subjects ≥28 days and weighing ≥12 to <20 kg (n=12); and subjects ≥28 days and weighing ≥3 to <12 kg (n=12): Received 5 mg/kg on Day 1 and 2.5 mg/kg once daily on subsequent days.

The adverse reactions observed were consistent with those observed in clinical trials of VEKLURY in adults. Adverse reactions (all grades) were reported in 8 (15%) subjects. The most common adverse reaction occurring in at least 5% of subjects was ALT increased (6%). No subjects experienced serious adverse reactions. Two (4%) subjects permanently discontinued treatment due to adverse

reactions (ALT increased [n=1], ALT increased and AST increased and hyperbilirubinemia [n=1]). Laboratory abnormalities (Grades 3-4) occurring in at least 3% of subjects with COVID-19 receiving VEKLURY in Trial 5823 and who had at least one post-baseline value for the specified test were hemoglobin decreased (18%, 9/51), eGFR decreased (18%, 7/40), creatinine increased (10%, 5/52), direct bilirubin increased (9%, 2/23), prothrombin time increased (7%, 3/46), APTT increased (7%, 3/45), lymphocytes decreased (6% 2/33), proteinuria (6%, 2/36), WBC decreased (4%, 2/51), ALT increased (4%, 2/51), glucose increased (4%, 2/52), glycosuria (4%, 2/46), potassium decreased (4%, 2/52).

Emergency Use Authorization Experience in Subjects with COVID-19

The following adverse reactions have been identified during use of VEKLURY under Emergency Use Authorization:

- General disorders and administration site conditions: Administration site extravasation
- Skin and subcutaneous tissue disorders: Rash
- Immune system disorders: Anaphylaxis, angioedema, infusion-related reactions, hypersensitivity
- Investigations: Transaminase elevations

7 DRUG INTERACTIONS

Due to potential antagonism based on data from cell culture experiments, concomitant use of VEKLURY with chloroquine phosphate or hydroxychloroquine sulfate is not recommended [see *Warnings and Precautions (5.3) and Microbiology (12.4)*].

Remdesivir and its metabolites are in vitro substrates and/or inhibitors of certain drug metabolizing enzymes and transporters. Based on a drug interaction study conducted with VEKLURY, no clinically significant drug interactions are expected with inducers of cytochrome P450 (CYP) 3A4 or inhibitors of Organic Anion Transporting Polypeptides (OATP) 1B1/1B3, and P-glycoprotein (P-gp) [see *Clinical Pharmacology (12.3)*].

8 USE IN SPECIFIC POPULATIONS

8.1 Pregnancy

Pregnancy Exposure Registry

There is a pregnancy exposure registry that monitors pregnancy outcomes in individuals exposed to VEKLURY during pregnancy. Pregnant and recently pregnant individuals can go to <https://covid-pr.pregistry.com> to enroll or call 1-800-616-3791 to obtain information about the registry.

Risk Summary

Available data from a clinical trial (IMPAACT 2032), published reports, the ongoing COVID-PR pregnancy exposure registry, and compassionate use of remdesivir in pregnant individuals have not identified a drug-associated risk of major birth defects, miscarriage, or adverse maternal or fetal

outcomes following exposure in the second and third trimester. However, there are insufficient pregnancy data available to evaluate the risk of remdesivir exposure during the first trimester. A study evaluating the pharmacokinetics of remdesivir during pregnancy demonstrated no clinically relevant differences between pregnant and non-pregnant individuals. No dose adjustments are recommended in patients who receive VEKLURY during pregnancy (*see Data*) and [*see Clinical Pharmacology (12.3)*]. In nonclinical reproductive toxicity studies, remdesivir demonstrated no adverse effect on embryo-fetal development when administered to pregnant animals at systemic exposures (AUC) of the predominant circulating metabolite of remdesivir (GS-441524) that were 4 times (rats and rabbits) the exposure in humans at the recommended human dose (RHD) (*see Data*). There are maternal and fetal risks associated with untreated COVID-19 in pregnancy (*see Clinical Considerations*).

The background risk of major birth defects and miscarriage for the indicated population is unknown. All pregnancies have a background risk of birth defect, loss, or other adverse outcomes. In the U.S. general population, the estimated background risk of major birth defects and miscarriage in clinically recognized pregnancies is 2 to 4% and 15 to 20%, respectively.

Clinical Considerations

Disease-associated maternal and/or embryo-fetal risk

COVID-19 in pregnancy is associated with adverse maternal and fetal outcomes, including preeclampsia, eclampsia, preterm birth, premature rupture of membranes, venous thromboembolic disease, and fetal death.

Data

Human Data

A non-randomized, open-label clinical study (IMPAACT 2032) evaluated pharmacokinetics and safety of up to 10 days of treatment with VEKLURY in 25 hospitalized pregnant and 28 hospitalized non-pregnant individuals of childbearing potential. Subjects received VEKLURY 200 mg once daily for 1 day followed by VEKLURY 100 mg once daily on subsequent days via intravenous infusion. Subjects were enrolled prior to their fourth VEKLURY infusion. Assessments occurred at the following intervals: Screening; Pre-infusion (defined as 48 hours prior to start of first infusion); each infusion day; 48 hours after the last infusion; 7 days after the last infusion; 4 weeks after the last infusion. Assessments also occurred 24 hours post-delivery in subjects who delivered. Treatment with VEKLURY was stopped in subjects who were discharged from the hospital prior to the completion of 10 days of treatment.

Of the 25 pregnant subjects, median age was 33 years (Q1, Q3: 27 years, 37 years); 40% were White, 24% were Black, and 48% were Hispanic or Latino. A total of 9 subjects (36%) were on high-flow oxygen; 12 subjects (48%) were on low-flow oxygen; and 1 subject (4%) was on room air, at baseline. Three subjects (12%) did not have data available on baseline oxygen status. The overall median (Q1, Q3) duration of symptoms prior to hospitalization was 7 (6, 9) days. The overall median (Q1, Q3) duration of symptoms prior to first dose of VEKLURY was 8 (6, 9) days.

Of the 25 pregnant subjects, median gestational age was 28 weeks at baseline (range 22 to 33 weeks) and about half of subjects were in each of the second and third trimester of pregnancy. No clinically relevant differences in the pharmacokinetics of remdesivir or its metabolites (GS-704277 and GS-441524) were observed between pregnant (n=21) and non-pregnant (n=22) individuals [*see*

Clinical Pharmacology (12.3)]. No difference in pharmacokinetics of remdesivir or its metabolites is expected between the first and second/third trimesters. The adverse reactions observed were consistent with those observed in clinical trials of VEKLURY in adults [see *Adverse Reactions (6.1)*]. There were no adverse reactions in infants born during the study (n=16).

Animal Data

Remdesivir was administered via intravenous injection to pregnant rats and rabbits (up to 20 mg/kg/day) on Gestation Days 6 through 17, and 7 through 20, respectively, and also to rats from Gestation Day 6 to Lactation/Post-partum Day 20. No adverse effects on embryo-fetal (rats and rabbits) or pre/postnatal (rats) development were observed in rats and rabbits at nontoxic doses in pregnant animals. During organogenesis, exposures to the predominant circulating metabolite (GS-441524) were 4 times higher (rats and rabbits) than the exposure in humans at the RHD. In a pre/postnatal development study, exposures to the predominant circulating metabolite of remdesivir (GS-441524) were similar to the human exposures at the RHD.

8.2 Lactation

Risk Summary

A published case report describes the presence of remdesivir and active metabolite GS-441524 in human milk. Available data (n=11) from pharmacovigilance reports do not indicate adverse effects on breastfed infants from exposure to remdesivir and its metabolite through breastmilk. There are no available data on the effects of remdesivir on milk production. In animal studies, remdesivir and metabolites have been detected in the nursing pups of mothers given remdesivir, likely due to the presence of remdesivir in milk (see *Data*). The developmental and health benefits of breastfeeding should be considered along with the mother's clinical need for VEKLURY and any potential adverse effects on the breastfed child from VEKLURY or from the underlying maternal condition.

Breastfeeding individuals with COVID-19 should follow practices according to clinical guidelines to avoid exposing the infant to COVID-19.

Data

Remdesivir and its metabolites were detected in the plasma of nursing rat pups, likely due to the presence of remdesivir and/or its metabolites in milk, following daily intravenous administration of remdesivir to pregnant rats from Gestation Day 6 to Lactation Day 20. Exposures in nursing pups were approximately 1% that of maternal exposure on Lactation Day 10. The concentration of remdesivir in animal milk does not necessarily predict the concentration of drug in human milk.

8.4 Pediatric Use

The safety and effectiveness of VEKLURY for the treatment of COVID-19 have been established in pediatric patients 28 days of age and older and weighing at least 3 kg, who are:

- Hospitalized, or
- Not hospitalized and have mild-to-moderate COVID-19, and are at high risk for progression to severe COVID-19, including hospitalization or death.

Use in this age group is supported by the following:

- trials in adults [see *Clinical Studies (14.1, 14.2, 14.3, 14.4, 14.5)*]
- an open-label trial (Study 5823) in 53 hospitalized pediatric subjects [see *Adverse Reactions (6.1), Clinical Pharmacology (12.3), and Clinical Studies (14.6)*].

Use of VEKLURY in pediatric patients 28 days of age and older and weighing at least 3 kg is supported by Study 5823 where 53 hospitalized pediatric subjects were treated with weight-based VEKLURY for up to 10 days in the following cohorts: subjects ≥ 12 years and weighing ≥ 40 kg (n=12); subjects < 12 years and weighing ≥ 40 kg (n=5); subjects ≥ 28 days and weighing ≥ 20 to < 40 kg (n=12); subjects ≥ 28 days and weighing ≥ 12 to < 20 kg (n=12); and subjects ≥ 28 days and weighing ≥ 3 to < 12 kg (n=12). The safety and pharmacokinetic results in pediatric subjects in this group were similar to those in adults [see *Adverse Reactions (6.1), Clinical Pharmacology (12.3), Clinical Studies (14.6)*].

Use of VEKLURY in pediatric patients weighing at least 40 kg is further supported by a clinical trial of VEKLURY in non-hospitalized subjects that included 3 pediatric subjects 12 years and older, and by clinical trials in hospitalized subjects that included 30 adult subjects weighing 40 to 50 kg. The safety in this weight group was comparable to adult subjects weighing greater than 50 kg. Thirty-nine pediatric patients 12 years and older and weighing at least 40 kg received VEKLURY in a compassionate use program in hospitalized subjects; the available clinical data from these patients are limited [see *Adverse Reactions (6.1) and Clinical Studies (14)*].

All pediatric patients 28 days of age and older and weighing at least 3 kg must have eGFR determined before starting VEKLURY and while receiving VEKLURY as clinically appropriate [see *Dosage and Administration (2.2, 2.4), Adverse Reactions (6.1), Use in Specific Populations (8.6)*].

The safety and effectiveness of VEKLURY have not been established in pediatric patients younger than 28 days of age or weighing less than 3 kg.

8.5 Geriatric Use

Of the 1,062 hospitalized subjects with SARS-CoV-2 infection randomized in ACTT-1, 36% were 65 years or older. Of the 397 hospitalized subjects with SARS-CoV-2 infection randomized in Study GS-US-540-5773, 42% were 65 years or older. Of the 584 hospitalized subjects with SARS-CoV-2 infection randomized in Study GS-US-540-5774, 27% were 65 years or older. Of the 562 non-hospitalized subjects with SARS-CoV-2 infection randomized in Study GS-US-540-9012, 17% were 65 years or older. Reported clinical experience has not identified differences in responses between the elderly and younger patients [see *Clinical Studies (14)*]. No dosage adjustment is required in patients over the age of 65 years. In general, appropriate caution should be exercised in the administration of VEKLURY and monitoring of elderly patients, reflecting the greater frequency of decreased hepatic, renal, or cardiac function, and of concomitant disease or other drug therapy.

8.6 Renal Impairment

The pharmacokinetics of VEKLURY have not been evaluated in patients with renal impairment. Patients with eGFR greater than or equal to 30 mL per minute have received VEKLURY for treatment of COVID-19 with no dose adjustment of VEKLURY [see *Clinical Studies (14)*].

All patients must have an eGFR determined before starting VEKLURY and while receiving VEKLURY as clinically appropriate. Because the excipient betadex sulfobutyl ether sodium is renally cleared and accumulates in patients with decreased renal function, administration of drugs formulated with betadex sulfobutyl ether sodium (such as VEKLURY) is not recommended in patients with eGFR less than 30 mL per minute [see *Dosage and Administration (2.2, 2.4)*].

8.7 Hepatic Impairment

The pharmacokinetics of VEKLURY have not been evaluated in patients with hepatic impairment.

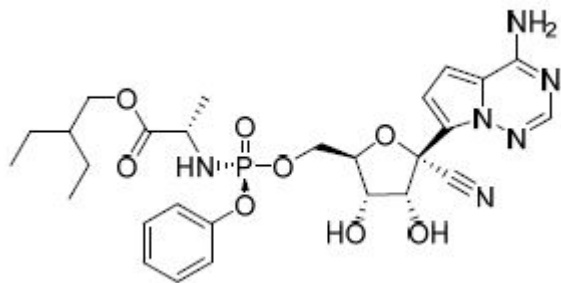
Perform hepatic laboratory testing in all patients before starting VEKLURY and while receiving VEKLURY as clinically appropriate [see *Dosage and Administration (2.2)* and *Warnings and Precautions (5.2)*].

10 OVERDOSAGE

There is no human experience of acute overdose with VEKLURY. Treatment of overdose with VEKLURY should consist of general supportive measures including monitoring of vital signs and observation of the clinical status of the patient. There is no specific antidote for overdose with VEKLURY.

11 DESCRIPTION

VEKLURY contains remdesivir, a SARS-CoV-2 nucleotide analog RNA polymerase inhibitor. The chemical name for remdesivir is 2-ethylbutyl *N*-{(S)-[2-C-(4-aminopyrrolo[2,1-f][1,2,4]triazin-7-yl)-2,5-anhydro-d-altronitril-6-O-yl]phenoxyphosphoryl}-L-alaninate. It has a molecular formula of $C_{27}H_{35}N_6O_8P$ and a molecular weight of 602.6 g/mol. Remdesivir has the following structural formula:



VEKLURY for injection contains 100 mg of remdesivir as a sterile, preservative-free lyophilized white to off-white to yellow powder in a single-dose clear glass vial. It requires reconstitution and then further dilution prior to administration by intravenous infusion [see *Dosage and Administration (2.5, 2.6)*]. The inactive ingredients are 3 g betadex sulfobutyl ether sodium and may include hydrochloric acid and/or sodium hydroxide for pH adjustment.

VEKLURY injection contains 100 mg/20 mL (5 mg/mL) of remdesivir as a sterile, preservative-free, clear, colorless to yellow solution in a single-dose clear glass vial. It requires dilution prior to administration by intravenous infusion [see *Dosage and Administration (2.5, 2.6)*]. The inactive

ingredients are 6 g betadex sulfobutyl ether sodium, Water for Injection, USP, and may include hydrochloric acid and/or sodium hydroxide for pH adjustment.

12 CLINICAL PHARMACOLOGY

12.1 Mechanism of Action

Remdesivir is an antiviral drug with activity against severe acute respiratory syndrome coronavirus 2 (SARS-CoV-2) [see *Microbiology (12.4)*].

12.2 Pharmacodynamics

Remdesivir and metabolites exposure-response relationships and the time course of pharmacodynamics response are unknown.

12.3 Pharmacokinetics

The pharmacokinetic (PK) properties of remdesivir and metabolites are provided in Table 12. The multiple dose PK parameters of remdesivir and metabolites in adults with COVID-19 are provided in Table 13.

Table 12 Pharmacokinetic Properties of Remdesivir and Metabolites (GS-441524 and GS-704277)

	Remdesivir	GS-441524	GS-704277
Absorption			
T _{max} (h) ^a	0.67-0.68	1.51-2.00	0.75-0.75
Distribution			
% bound to human plasma proteins	88-93.6 ^b	2	1
Blood-to-plasma ratio	0.68-1.0	1.19	0.56
Elimination			
t _{1/2} (h) ^c	1	27	1.3
Metabolism			
Metabolic pathway(s)	CES1 (80%) Cathepsin A (10%) CYP3A (10%)	Not significantly metabolized	HINT1
Excretion			
Major route of elimination	Metabolism	Glomerular filtration and active tubular secretion	Metabolism
% of dose excreted in urine ^d	10	49	2.9
% of dose excreted in feces ^d	ND	0.5	ND

ND=not detected

- a. Remdesivir administered as a 30-minute IV infusion (Study GS-US-399-5505); range of median observed on Day 1 and Day 5 or 10.
- b. Range of protein binding for remdesivir from 2 independent experiments show no evidence of concentration-dependent protein binding for remdesivir.
- c. Median (Study GS-US-399-4231).
- d. Mean (Study GS-US-399-4231).

Table 13 Multiple Dose PK Parameters^a of Remdesivir and Metabolites (GS-441524 and GS-704277) Following IV Administration of VEKLURY 100 mg to Adults with COVID-19

Parameter Mean ^b (95% CI)	Remdesivir	GS-441524	GS-704277
C _{max} (nanogram per mL)	2700 (2440, 2990)	143 (135, 152)	198 (180, 218)
AUC _{tau} (nanogram•h per mL)	1710 (1480, 1980)	2410 (2250, 2580)	392 (348, 442)
C _{trough} (nanogram per mL)	ND	61.5 (56.5, 66.8)	ND

CI=Confidence Interval; ND=Not detectable (at 24 hours post-dose)

- a. Population PK estimates for 30-minute IV infusion of remdesivir for 3 days (Study GS-US-540-9012, n=147).
b. Geometric mean estimates.

Specific Populations

Pharmacokinetic differences based on sex, race, age, renal function, and hepatic function on the exposures of remdesivir were evaluated using population pharmacokinetic analysis. Sex and race did not affect the pharmacokinetics of remdesivir and its metabolites (GS-441524 and GS-704277).

Pregnant Individuals

The pharmacokinetics of remdesivir and its circulating metabolites (GS-441524 and GS-704277) were evaluated in pregnant individuals with COVID-19. Exposures (AUC_{tau}, C_{max}, and C_{tau}) of remdesivir and its circulating metabolites during pregnancy were similar to those in non-pregnant individuals (see Table 14).

Table 14 Multiple Dose PK Parameters^a of Remdesivir and Metabolites (GS-441524 and GS-704277) Following Intravenous Administration of VEKLURY to Pregnant and Non-Pregnant Individuals with COVID-19

Parameter Mean ^b (90% CI)	Pregnant Individuals (N=21)	Non-Pregnant Individuals (N=22)
Remdesivir		
C _{max} (nanogram per mL)	1360 (978, 1890)	1240 (891, 1720)
AUC _{tau} (nanogram•h per mL)	1250 (916, 1700) ^c	1300 (1070, 1590) ^d
GS-441524		
C _{max} (nanogram per mL)	113 (102, 126)	121 (108, 136)
AUC _{tau} (nanogram•h per mL)	1840 (1630, 2070) ^e	2050 (1780, 2350) ^f
C _{tau} (nanogram per mL)	51.6 (44.7, 59.6) ^e	57.1 (48.7, 66.9) ^f
GS-704277		
C _{max} (nanogram per mL)	217 (187, 252)	213 (188, 240)
AUC _{tau} (nanogram•h per mL)	454 (406, 508) ^e	437 (384, 497)

CI=Confidence Interval

- a. Study CO-US-590-5961 (IMPAACT).
- b. Geometric mean estimates.
- c. N=18
- d. N=17
- e. N=20
- f. N=21

Pediatric Patients

Population pharmacokinetic models for remdesivir and its circulating metabolites (GS-704277 and GS-441524), developed using pooled data from studies in healthy subjects and in adult and pediatric patients with COVID-19, were used to estimate pharmacokinetic exposures in pediatric patients aged ≥28 days to <18 years and weighing ≥3 kg (Study 5823). Geometric mean estimated exposures (AUC_{tau}, C_{max}, and C_{tau}) for these patients at the doses administered were higher for remdesivir (33% to 129%), GS-441524 (0% to 60%), and GS-704277 (37% to 124%) as compared to those in adult patients with COVID-19; however, the increases were not considered clinically significant [see *Use in Specific Populations* (8.4)].

The multiple dose PK parameters of remdesivir and metabolites in pediatric patients with COVID-19 are provided in Table 15.

Table 15 Multiple Dose PK Parameters^a of Remdesivir and Metabolites (GS-441524 and GS-704277) Following Intravenous Administration of VEKLURY 100 mg (Cohorts 1 and 8) or 2.5 mg/kg (Cohorts 2-4) to Pediatric Patients with COVID-19

Parameter Mean ^b (95% CI)	Cohort 1	Cohort 8	Cohort 2	Cohort 3	Cohort 4
	12 to <18 Years and Weighing ≥40 kg (N=12)	<12 Years and Weighing ≥40 kg (N=5)	28 Days to <18 Years and Weighing 20 to <40 kg (N=12)	28 Days to <18 Years and Weighing 12 to <20 kg (N=11)	28 Days to <18 Years and Weighing 3 to <12 kg (N=10)
Remdesivir					
C _{max} (nanogram per mL)	3910 (3140, 4870)	3920 (2270, 6790)	5680 (4660, 6930)	5530 (4240, 7210)	4900 (3790, 6340)
AUC _{tau} (nanogram•h per mL)	2470 (1940, 3150)	2280 (1200, 4300)	3500 (2570, 4780)	3910 (2140, 7160)	2930 (1900, 4520)
GS-441524					
C _{max} (nanogram per mL)	197 (123, 316)	162 (57.4, 458)	181 (132, 248)	158 (116, 215)	202 (171, 238)
AUC _{tau} (nanogram•h per mL)	3460 (2010, 5960)	2640 (772, 9030)	2870 (2020, 4080)	2400 (1740, 3320)	2770 (2230, 3450)
C _{tau} (nanogram per mL)	98.3 (59.0, 164)	76.2 (24.0, 242)	73.8 (49.9, 109)	69.4 (48.1, 100)	78.4 (58.5, 105)
GS-704277					
C _{max} (nanogram per mL)	307 (212, 443)	278 (145, 532)	423 (309, 578)	444 (336, 585)	390 (305, 500)
AUC _{tau} (nanogram•h per mL)	815 (474, 1400)	537 (203, 1420)	754 (547, 1040)	734 (513, 1050)	691 (494, 966)

CI=Confidence Interval

- a. Population PK estimates for 30-minutes IV infusion of remdesivir for up to 10 days (Study GS-US-540-5823).
b. Geometric mean estimates.

Drug Interaction Studies

In vitro, remdesivir is a substrate for enzymes CYP3A, carboxylesterase 1 (CES1), and cathepsin A (CatA) and OATP1B1 and P-gp transporters; GS-704277 is a substrate for OATP1B1 and OATP1B3.

In vitro, remdesivir is an inhibitor of CYP3A, UGT1A1, OATP1B1, OATP1B3, and MATE1. No inhibitory interactions were identified for GS-704277 or GS-441524 in vitro.

Remdesivir is not a substrate for CYP1A1, 1A2, 2B6, 2C9, 2C19, or OATP1B3. GS-704277 and GS-441524 are not substrates for CYP1A1, 1A2, 2B6, 2C8, 2C9, 2D6, or 3A5. GS-441524 is also not a substrate for CYP2C19 or 3A4. GS-704277 and GS-441524 are not substrates for OAT1, OAT3, OCT1, OCT2, MATE1, or MATE2k. GS-441524 is also not a substrate for OATP1B1 or OATP1B3.

A drug-drug interaction study was conducted with VEKLURY. Table 16 summarizes the pharmacokinetic effects of other drugs on remdesivir and metabolites GS-704277 and GS-441524.

Table 16 Effect of Other Drugs on Remdesivir and Metabolites GS-704277 and GS-441524

Coadministered Drug	Dose of Coadministered Drug (mg)	Remdesivir Dose (mg)	N	Mean Ratio (90% CI) of Remdesivir, GS-704277, and GS-441524 PK With/Without Coadministered Drug No Effect = 1.00 (0.70-1.43)			
					C _{max}	AUC _{inf}	C ₂₄
Cyclosporin A ^a	400 single dose	100 single dose	9	remdesivir	1.49 (1.38-1.60)	1.89 (1.77-2.02)	-
				GS-704277	2.51 (2.26-2.78)	2.97 (2.75-3.20)	-
				GS-441524	1.17 (1.12-1.22)	1.03 (0.99-1.08)	1.02 (0.95-1.10)
Carbamazepine ^a	300 twice daily	100 single dose	8	remdesivir	0.87 (0.78-0.97)	0.92 (0.83-1.02)	-
				GS-704277	0.96 (0.84-1.10)	0.98 (0.92-1.05)	-
				GS-441524	0.97 (0.88-1.07)	0.83 (0.78-0.89)	0.71 (0.64-0.78)

a. Interaction study conducted in healthy volunteers.

12.4 Microbiology

Mechanism of Action

Remdesivir is an inhibitor of the SARS-CoV-2 RNA-dependent RNA polymerase (RdRp), which is essential for viral replication. Remdesivir is an adenosine nucleotide prodrug that distributes into cells where it is metabolized to a nucleoside monophosphate intermediate by carboxyesterase 1 and/or cathepsin A, depending upon the cell type. The nucleoside monophosphate is subsequently

phosphorylated by cellular kinases to form the pharmacologically active nucleoside triphosphate metabolite (GS-443902). Remdesivir triphosphate (RDV-TP) acts as an analog of adenosine triphosphate (ATP) and competes with high selectivity (3.65-fold) over the natural ATP substrate for incorporation into nascent RNA chains by the SARS-CoV-2 RdRp, which results in delayed chain termination (position i+3) during replication of the viral RNA. In a biochemical assay assessing RDV-TP incorporation by the MERS-CoV RdRp complex, RDV-TP inhibited RNA synthesis with an IC₅₀ value of 0.032 μM. RDV-TP can also inhibit viral RNA synthesis following its incorporation into the template viral RNA as a result of read-through by the viral polymerase that may occur at higher nucleotide concentrations. When remdesivir nucleotide is present in the viral RNA template, the efficiency of incorporation of the complementary natural nucleotide is compromised, thereby inhibiting viral RNA synthesis. Remdesivir triphosphate is a weak inhibitor of mammalian DNA and RNA polymerases, including human mitochondrial RNA polymerase.

Antiviral Activity

Cell Culture Antiviral Activity

Remdesivir exhibited cell culture antiviral activity against a clinical isolate of SARS-CoV-2 in primary human airway epithelial (HAE) cells with a 50% effective concentration (EC₅₀) of 9.9 nM after 48 hours of treatment. Remdesivir inhibited the replication of SARS-CoV-2 in the continuous human lung epithelial cell lines Calu-3 and A549-hACE2 with EC₅₀ values of 280 nM after 72 hours of treatment and 115 nM after 48 hours of treatment, respectively.

Remdesivir EC₅₀ values for SARS-CoV-2 in A549-hACE2 cells were not different when combined with chloroquine phosphate or hydroxychloroquine sulfate at concentrations up to 2.5 μM. In a separate study, the antiviral activity of remdesivir was antagonized by chloroquine phosphate in a dose-dependent manner when the two drugs were co-incubated at clinically relevant concentrations in HEp-2 cells infected with respiratory syncytial virus (RSV). Higher remdesivir EC₅₀ values were observed with increasing concentrations of chloroquine phosphate. Increasing concentrations of chloroquine phosphate or hydroxychloroquine sulfate reduced formation of remdesivir triphosphate in A549-hACE2, HEp-2, and normal human bronchial epithelial cells.

Based on cell culture susceptibility testing by virus yield reduction assay and/or N protein ELISA assay, remdesivir retained similar antiviral activity (<2.5-fold change in EC₅₀ value) against clinical isolates of SARS-CoV-2 variants including Alpha (B.1.1.7), Beta (B.1.351), Gamma (P.1), Epsilon (B.1.429), Kappa (B.1.617.1), Lambda (C.37), Iota (B.1.526), Zeta (P.2), and Delta (B.1.617.2) variants compared to an earlier lineage SARS-CoV-2 (lineage A) isolate. Similarly, for the clinical isolates of Omicron variants (including B.1.1.529/BA.1, BA.2, BA.2.12.1, BA.2.75, BA.4, BA.4.6, BA.5, BF.5, BQ.1.1, and XBB), remdesivir maintained antiviral activity (≤1.1-fold change in EC₅₀ value) compared to an earlier lineage SARS-CoV-2 (lineage A) isolate.

Clinical Antiviral Activity

SARS-CoV-2 RNA shedding results from GS-US-540-5776 (ACTT-1) indicate that remdesivir does not significantly reduce the amount of detectable SARS-CoV-2 RNA in oropharyngeal or nasopharyngeal swabs or plasma samples in hospitalized patients compared to placebo, and SARS-CoV-2 RNA shedding results from GS-US-540-9012 indicate that remdesivir does not significantly reduce the amount of detectable SARS-CoV-2 RNA in nasopharyngeal swabs in non-hospitalized patients compared to placebo.

Resistance

Cell Culture Resistance

SARS-CoV-2 isolates with reduced susceptibility to remdesivir have been selected in cell culture. In a selection with GS-441524, the parent nucleoside of remdesivir, virus pools emerged expressing amino acid substitutions at V166A, N198S, S759A, V792I, C799F, and C799R in the viral RdRp (nsp12). When these substitutions were individually introduced into a wild-type recombinant virus by site-directed mutagenesis, 1.7- to 3.5-fold reductions in susceptibility to remdesivir were observed. In a cell culture resistance selection experiment with remdesivir, nsp12 amino acid substitution E802D emerged, resulting in a 2.5-fold reduction in susceptibility to remdesivir. In another selection with remdesivir using a SARS-CoV-2 isolate containing the P323L substitution in the viral polymerase, a single amino acid substitution at V166L emerged. Recombinant SARS-CoV-2 with substitutions at P323L alone or P323L+V166L in combination exhibited 1.3- and 1.5-fold reductions in remdesivir susceptibility, respectively.

Cell culture resistance profiling of remdesivir using the rodent CoV murine hepatitis virus identified two substitutions (F476L and V553L) in the viral RdRp (nsp12) at residues conserved across CoVs. Introduction of the corresponding substitutions (F480L and V557L) into SARS-CoV resulted in 6-fold reduction in susceptibility to remdesivir in cell culture and attenuated SARS-CoV pathogenesis in a mouse model. When individually introduced into a SARS-CoV-2 recombinant virus, the corresponding substitutions at F480L and V557L each conferred 2-fold reduced susceptibility to remdesivir.

Treatment-Emergent Resistance

SARS-CoV-2 nsp12 E802D substitution has emerged in one individual treated with remdesivir. The E802D substitution resulted in a 2.5-fold increase in the remdesivir EC₅₀ value.

Resistance in Clinical Trials

In GS-US-540-5776 (ACTT-1), among 61 subjects with baseline and post-baseline sequencing data available, the rate of emerging substitutions in the viral RdRp (nsp12) was similar in subjects treated with VEKLURY compared to placebo. Two subjects treated with VEKLURY had an emergent substitution previously identified in resistance selection experiments (nsp12 V792I in one and C799F in the other). These substitutions are associated with 2.2- and 2.5-fold decreases in remdesivir susceptibility, respectively, based on assessments of clinical isolates.

In Study GS-US-540-9012, among 244 subjects with baseline and post-baseline sequencing data available, the rate of emerging substitutions in the viral RdRp (nsp12) was similar in subjects treated with VEKLURY compared to placebo. In one subject treated with VEKLURY, one substitution in the RdRp (nsp12 A376V) emerged and was associated with a 12.6-fold decrease in remdesivir susceptibility in a subgenomic replicon assay. This subject was not hospitalized and showed alleviation of all baseline symptoms, except loss of taste and smell, prior to or on Day 14.

In Study GS-US-540-5823, among pediatric subjects with baseline and post-baseline sequencing data available, substitutions in the viral RdRp (nsp12) were observed in 2 of 23 subjects treated with VEKLURY. The substitutions observed were not associated with resistance to remdesivir (G670V; 0.96-fold change in EC₅₀ relative to reference) or their impact on susceptibility to remdesivir could not be determined due to the lack of replication in a subgenomic replicon assay (V495F, A656P,

A656P+G670V). No substitutions observed in other proteins (nsp9-10, nsp12-14) of the replication-transcription complex were associated with resistance to remdesivir.

13 NONCLINICAL TOXICOLOGY

13.1 Carcinogenesis, Mutagenesis, Impairment of Fertility

Carcinogenesis and Mutagenesis

Given the short-term administration of VEKLURY for the treatment of COVID-19, long-term animal studies to evaluate the carcinogenic potential of remdesivir were not conducted.

Remdesivir was not genotoxic in a battery of assays, including bacterial mutagenicity, chromosome aberration using human peripheral blood lymphocytes, and in vivo rat micronucleus assays.

Impairment of Fertility

Nonclinical toxicity studies in rats demonstrated no adverse effect on male fertility at exposures of the predominant circulating metabolite (GS-441524) approximately 2 times the exposure in humans at the RHD.

Reproductive toxicity, including decreases in corpora lutea, numbers of implantation sites, and viable embryos, was seen when remdesivir was administered by daily intravenous administration at a systemically toxic dose (10 mg/kg) in female rats 14 days prior to mating and during conception; exposures of the predominant circulating metabolite (GS-441524) were 1.3 times the exposure in humans at the RHD.

13.2 Animal Toxicology and/or Pharmacology

Intravenous administration (slow bolus) of remdesivir to male rhesus monkeys at dosage levels of 5, 10, and 20 mg/kg/day for 7 days resulted, at all dose levels, in increased mean urea nitrogen and increased mean creatinine, renal tubular atrophy, and basophilia and casts.

Intravenous administration (slow bolus) of remdesivir to rats at dosage levels of ≥ 3 mg/kg/day for up to 4 weeks resulted in findings indicative of kidney injury and/or dysfunction.

Kidney-related effects in rats and monkeys were observed at exposures of the predominant circulating metabolite (GS-441524) that are lower than the exposure in humans at the RHD.

14 CLINICAL STUDIES

14.1 Description of Clinical Trials

The efficacy and safety of VEKLURY were evaluated in the trials summarized in Table 17.

Table 17 Trials Conducted with VEKLURY in Subjects with COVID-19

Trial	Population	Trial Arms (N)	Timepoint
NIAID ACTT-1 ^a (NCT04280705)	Hospitalized with mild/moderate and severe COVID-19	VEKLURY 10 Days (532) Placebo (516)	29 Days after Randomization
GS-US-540-5773 ^b (NCT04292899)	Hospitalized with severe COVID-19	VEKLURY 5 Days (200) VEKLURY 10 Days (197)	Day 14
GS-US-540-5774 ^b (NCT04292730)	Hospitalized with moderate COVID-19	VEKLURY 5 Days (191) VEKLURY 10 Days (193) Standard of care (200)	Day 11
GS-US-540-9012 ^a (NCT04501952)	Non-hospitalized with mild-to-moderate COVID-19 and at high risk for progression to severe disease	VEKLURY 3 Days (279) Placebo (283)	Day 28
GS-US-540-5823 (Cohorts 1-4, 8) ^c (NCT04431453)	Hospitalized pediatric subjects 28 days to <18 years of age and weighing at least 3 kg with COVID-19	VEKLURY up to 10 Days (53)	Day 10

COVID-19: coronavirus disease 2019

- a. Randomized, double-blind, placebo-controlled trial.
- b. Randomized, open-label trial.
- c. Open-label trial, descriptive outcome analyses.

14.2 NIAID ACTT-1 Study in Hospitalized Subjects with Mild/Moderate and Severe COVID-19

A randomized, double-blind, placebo-controlled clinical trial (ACTT-1) of hospitalized adult subjects with confirmed SARS-CoV-2 infection and mild, moderate, or severe COVID-19 compared treatment with VEKLURY for 10 days (n=541) with placebo (n=521). Mild/moderate disease was defined as SpO₂ >94% and respiratory rate <24 breaths/minute without supplemental oxygen; severe disease was defined as an SpO₂ ≤94% on room air, a respiratory rate ≥24 breaths/minute, an oxygen requirement, or a requirement for mechanical ventilation. Subjects had to have at least one of the following to be enrolled in the trial: radiographic infiltrates by imaging, SpO₂ ≤94% on room air, a requirement for supplemental oxygen, or a requirement for mechanical ventilation. Subjects treated with VEKLURY received 200 mg on Day 1 and 100 mg once daily on subsequent days, for 10 days of treatment via intravenous infusion. Treatment with VEKLURY was stopped in subjects who were discharged from the hospital prior to the completion of 10 days of treatment.

At baseline, mean age was 59 years (with 36% of subjects aged 65 or older); 64% of subjects were male, 53% were White, 21% were Black, and 13% were Asian; 24% were Hispanic or Latino;

105 subjects had mild/moderate disease (10% in both treatment groups); 957 subjects had severe disease (90% in both treatment groups). Subjects in this trial were unvaccinated. A total of 285 subjects (27%) (n=131 received VEKLURY) were on invasive mechanical ventilation or ECMO. The most common comorbidities were hypertension (51%), obesity (45%), and type 2 diabetes mellitus (31%); the distribution of comorbidities was similar between the two treatment groups.

The primary clinical endpoint was time to recovery within 29 days after randomization. Recovery was defined as discharged from the hospital without limitations on activities, discharged from the hospital with limitations on activities and/or requiring home oxygen, or hospitalized but not requiring supplemental oxygen and no longer requiring ongoing medical care. The median time to recovery was 10 days in the VEKLURY group compared to 15 days in the placebo group (recovery rate ratio 1.29 [95% CI 1.12 to 1.49], $p < 0.001$). Among subjects with mild/moderate disease at enrollment (n=105), the median time to recovery was 5 days in both the VEKLURY and placebo groups (recovery rate ratio 1.22 [95% CI 0.82 to 1.81]). Among subjects with severe disease at enrollment (n=957), the median time to recovery was 11 days in the VEKLURY group compared to 18 days in the placebo group (recovery rate ratio 1.31 [95% CI 1.12 to 1.52]).

A key secondary endpoint was clinical status on Day 15 assessed on an 8-point ordinal scale consisting of the following categories:

1. not hospitalized, no limitations on activities;
2. not hospitalized, limitation on activities and/or requiring home oxygen;
3. hospitalized, not requiring supplemental oxygen - no longer requires ongoing medical care;
4. hospitalized, not requiring supplemental oxygen - requiring ongoing medical care (COVID-19 related or otherwise);
5. hospitalized, requiring supplemental oxygen;
6. hospitalized, on noninvasive ventilation or high-flow oxygen devices;
7. hospitalized, on invasive mechanical ventilation or ECMO; and
8. death.

Overall, the odds of improvement in the ordinal scale were higher in the VEKLURY group at Day 15 when compared to the placebo group (odds ratio 1.54 [95% CI 1.25 to 1.91]).

Overall, 29-day mortality was 11% for the VEKLURY group vs 15% for the placebo group (hazard ratio 0.73 [95% CI 0.52 to 1.03]).

14.3 Study GS-US-540-5773 in Hospitalized Subjects with Severe COVID-19

A randomized, open-label multi-center clinical trial (Study 5773) in adult subjects with confirmed SARS-CoV-2 infection, an SpO₂ of $\leq 94\%$ on room air, and radiological evidence of pneumonia compared 200 subjects who received VEKLURY for 5 days with 197 subjects who received VEKLURY for 10 days. Treatment with VEKLURY was stopped in subjects who were discharged from the hospital prior to completion of their protocol-defined duration of treatment. Subjects on mechanical ventilation at screening were excluded. All subjects received 200 mg of VEKLURY on Day 1 and 100 mg once daily on subsequent days via intravenous infusion, plus standard of care.

At baseline, the median age of subjects was 61 years (range, 20 to 98 years); 64% were male, 75% were White, 12% were Black, and 12% were Asian; 22% were Hispanic or Latino. More subjects in the 10-day group than the 5-day group required invasive mechanical ventilation or ECMO (5% vs

2%), or high-flow oxygen support (30% vs 25%), at baseline. Subjects in this trial were unvaccinated. Median duration of symptoms and hospitalization prior to first dose of VEKLURY were similar across treatment groups.

The primary endpoint was clinical status on Day 14 assessed on a 7-point ordinal scale consisting of the following categories:

1. death;
2. hospitalized, receiving invasive mechanical ventilation or ECMO;
3. hospitalized, receiving noninvasive ventilation or high-flow oxygen devices;
4. hospitalized, requiring low-flow supplemental oxygen;
5. hospitalized, not requiring supplemental oxygen but receiving ongoing medical care (related or not related to COVID-19);
6. hospitalized, requiring neither supplemental oxygen nor ongoing medical care (other than that specified in the protocol for remdesivir administration); and
7. not hospitalized.

Overall, after adjusting for between-group differences at baseline, subjects receiving a 5-day course of VEKLURY had similar clinical status at Day 14 as those receiving a 10-day course (odds ratio for improvement 0.75 [95% CI 0.51 to 1.12]). There were no statistically significant differences in recovery rates or mortality rates in the 5-day and 10-day groups once adjusted for between-group differences at baseline. All-cause mortality at Day 28 was 12% vs 14% in the 5- and 10-day treatment groups, respectively.

14.4 Study GS-US-540-5774 in Hospitalized Subjects with Moderate COVID-19

A randomized, open-label multi-center clinical trial (Study 5774) of hospitalized adult subjects with confirmed SARS-CoV-2 infection, SpO₂ >94% and radiological evidence of pneumonia compared treatment with VEKLURY for 5 days (n=191) and treatment with VEKLURY for 10 days (n=193) with standard of care (n=200). Treatment with VEKLURY was stopped in subjects who were discharged from the hospital prior to completion of their protocol-defined duration of treatment. Subjects treated with VEKLURY received 200 mg on Day 1 and 100 mg once daily on subsequent days via intravenous infusion.

At baseline, the median age of subjects was 57 years (range, 12 to 95 years); 61% were male, 61% were White, 19% were Black, and 19% were Asian; 18% were Hispanic or Latino. Subjects in this trial were unvaccinated. Baseline clinical status, oxygen support status, and median duration of symptoms and hospitalization prior to first dose of VEKLURY were similar across treatment groups.

The primary endpoint was clinical status on Day 11 assessed on a 7-point ordinal scale consisting of the following categories:

1. death;
2. hospitalized, receiving invasive mechanical ventilation or ECMO;
3. hospitalized, receiving noninvasive ventilation or high-flow oxygen devices;
4. hospitalized, requiring low-flow supplemental oxygen;
5. hospitalized, not requiring supplemental oxygen but receiving ongoing medical care (related or not related to COVID-19);

6. hospitalized, requiring neither supplemental oxygen nor ongoing medical care (other than that specified in the protocol for remdesivir administration); and
7. not hospitalized.

Overall, the odds of improvement in the ordinal scale were higher in the 5-day VEKLURY group at Day 11 when compared to those receiving only standard of care (odds ratio 1.65 [95% CI 1.09 to 2.48], $p=0.017$). The odds of improvement in clinical status with the 10-day treatment group when compared to those receiving only standard of care were not statistically significant (odds ratio 1.31 [95% CI 0.88 to 1.95]). All-cause mortality at Day 28 was $\leq 2\%$ in all treatment groups.

14.5 Study GS-US-540-9012 in Non-Hospitalized Subjects with Mild-to-Moderate COVID-19 and at High Risk for Progression to Severe Disease

A randomized, double-blind, placebo-controlled, clinical trial (Study 9012) evaluated VEKLURY 200 mg once daily for 1 day followed by VEKLURY 100 mg once daily for 2 days (for a total of 3 days of intravenously administered therapy) in 554 adult and 8 pediatric subjects (12 years of age and older and weighing at least 40 kg) who were non-hospitalized, had mild-to-moderate COVID-19, were symptomatic for COVID-19 for ≤ 7 days, had confirmed SARS-CoV-2 infection, and had at least one risk factor for progression to hospitalization. Risk factors for progression to hospitalization included age ≥ 60 years, obesity (BMI ≥ 30), chronic lung disease, hypertension, cardiovascular or cerebrovascular disease, diabetes mellitus, immunocompromised state, chronic mild or moderate kidney disease, chronic liver disease, current cancer, and sickle cell disease. Subjects who received, required, or were expected to require supplemental oxygen were excluded from the trial. Subjects were randomized in a 1:1 manner, stratified by residence in a skilled nursing facility (yes/no), age (<60 vs ≥ 60 years), and region (US vs ex-US) to receive VEKLURY ($n=279$) or placebo ($n=283$), plus standard of care.

At baseline, mean age was 50 years (with 30% of subjects aged 60 or older); 52% were male, 80% were White, 8% were Black, and 2% were Asian; 44% were Hispanic or Latino; median body mass index was 30.7 kg/m². Subjects in this trial were unvaccinated. VEKLURY or placebo was first administered to subjects in outpatient facilities (84%), home healthcare settings (13%), or skilled nursing facilities (3%). The most common comorbidities were diabetes mellitus (62%), obesity (56%), and hypertension (48%). Median (Q1, Q3) duration of symptoms prior to treatment was 5 (3, 6) days; median viral load was 6.3 log₁₀ copies/mL at baseline. The baseline demographics and disease characteristics were well balanced across the VEKLURY and placebo treatment groups.

The primary endpoint was the proportion of subjects with COVID-19 related hospitalization (defined as at least 24 hours of acute care) or all-cause mortality through Day 28. Events occurred in 2 (0.7%) subjects treated with VEKLURY compared to 15 (5.3%) subjects concurrently randomized to placebo (hazard ratio 0.134 [95% CI 0.031 to 0.586]; $p=0.0076$). No deaths were observed through Day 28.

14.6 Study GS-US-540-5823 in Hospitalized Pediatric Subjects with COVID-19

The primary objectives of this Phase 2/3 single-arm, open-label clinical study (Study GS-US-540-5823) were to evaluate pharmacokinetics and safety of up to 10 days of treatment with VEKLURY in pediatric subjects. A total of 53 pediatric subjects at least 28 days of age and weighing at least 3 kg with confirmed SARS-CoV-2 infection and mild, moderate, or severe COVID-19 was evaluated in five cohorts: subjects ≥ 12 years and weighing ≥ 40 kg ($n=12$); subjects <12 years and weighing ≥ 40 kg

(n=5); subjects ≥ 28 days and weighing ≥ 20 to < 40 kg (n=12); subjects ≥ 28 days and weighing ≥ 12 to < 20 kg (n=12); and subjects ≥ 28 days and weighing ≥ 3 to < 12 kg (n=12). Subjects weighing ≥ 40 kg received 200 mg of VEKLURY on Day 1 followed by VEKLURY 100 mg once daily on subsequent days; subjects weighing ≥ 3 kg to < 40 kg received VEKLURY 5 mg/kg on Day 1 followed by VEKLURY 2.5 mg/kg once daily on subsequent days. Assessments occurred at the following intervals: Screening; Day 1 (Baseline); Days 2-10, or until discharge, whichever came earlier; Follow-Up on Day 30 (± 5). Treatment with VEKLURY was stopped in subjects who were discharged from the hospital prior to the completion of 10 days of treatment.

At baseline, median age was 7 years (Q1, Q3: 2 years, 12 years); 57% were female, 70% were White, 30% were Black, and 44% were Hispanic or Latino; median weight was 25 kg (range: 4 to 192 kg). Subjects in this trial were unvaccinated. A total of 12 subjects (23%) were on invasive mechanical ventilation, 18 (34%) were on non-invasive ventilation or high-flow oxygen; 10 (19%) were on low-flow oxygen; and 13 (25%) were on room air, at baseline. The overall median (Q1, Q3) duration of symptoms and hospitalization prior to first dose of VEKLURY was 5 (3, 7) days and 1 (1, 3) day, respectively.

The descriptive outcome analyses showed treatment with VEKLURY for up to 10 days resulted in an overall median (Q1, Q3) change from baseline in clinical status (assessed on a 7-point ordinal scale ranging from death [score of 1] to ventilatory support and decreasing levels of oxygen to hospital discharge [score of 7]) of +2.0 (1.0, 4.0) points on Day 10.

Recovery (defined as an improvement from a baseline clinical status score of 2 through 5 to a score of 6 or 7, or an improvement from a baseline score of 6 to a score of 7) was reported for 62% of subjects on Day 10; median (Q1, Q3) time to recovery was 7 (5, 16) days.

Overall, 60% of subjects were discharged by Day 10, and 83% of subjects were discharged by Day 30. Three subjects (6%) died during the study.

16 HOW SUPPLIED/STORAGE AND HANDLING

How Supplied

VEKLURY for injection: 100 mg (NDC 61958-2901-2), is supplied as a single-dose vial containing a sterile, preservative-free white to off-white to yellow lyophilized powder. It requires reconstitution and further dilution prior to administration by intravenous infusion [see *Dosage and Administration (2.4)*]. Discard unused portion. The container closure is not made with natural rubber latex.

VEKLURY injection: 100 mg/20 mL (5 mg/mL) (NDC 61958-2902-2), is supplied as a single-dose vial containing a sterile, preservative-free, clear, colorless to yellow aqueous-based solution. It requires dilution prior to administration by intravenous infusion [see *Dosage and Administration (2.4)*]. Discard unused portion. The container closure is not made with natural rubber latex.

Storage and Handling

Do not reuse or save reconstituted or diluted VEKLURY for future use. These products contain no preservative; therefore, partially used vials should be discarded [see *Dosage and Administration (2.5)*].

VEKLURY for Injection

Store VEKLURY for injection, 100 mg vials below 30°C (below 86°F) until required for use.

After reconstitution, use vials immediately to prepare diluted solution. Dilute the reconstituted solution in 0.9% sodium chloride injection, USP within the same day as administration. The diluted VEKLURY solution in the infusion bags can be stored up to 24 hours at room temperature (20°C to 25°C [68°F to 77°F]) prior to administration or 48 hours at refrigerated temperature (2°C to 8°C [36°F to 46°F]).

VEKLURY Injection

Store VEKLURY injection vials at refrigerated temperature (2°C to 8°C [36°F to 46°F]) until required for use.

Dilute within the same day as administration. Prior to dilution, equilibrate VEKLURY injection to room temperature (20°C to 25°C [68°F to 77°F]). Sealed vials can be stored up to 12 hours at room temperature prior to dilution. Store VEKLURY injection after dilution in the infusion bags for no more than 24 hours at room temperature (20°C to 25°C [68°F to 77°F]) or 48 hours at refrigerated temperature (2°C to 8°C [36°F to 46°F]).

17 PATIENT COUNSELING INFORMATION

Advise the patient to read the FDA-approved patient labeling (Patient Information).

Hypersensitivity Reactions

Inform patients that hypersensitivity reactions have been seen in patients receiving VEKLURY during and after infusion. Advise patients to inform their healthcare provider if they experience any of the following: changes in heart rate; fever; shortness of breath, wheezing; swelling of the lips, face, or throat; rash; nausea; sweating; or shivering [see *Warnings and Precautions (5.1)*].

Increased Risk of Transaminase Elevations

Inform patients that VEKLURY may increase the risk of hepatic laboratory abnormalities. Advise patients to alert their healthcare provider immediately if they experience any symptoms of liver inflammation [see *Warnings and Precaution (5.2)*].

Drug Interactions

Inform patients that VEKLURY may interact with other drugs. Advise patients to report to their healthcare provider the use of any other prescription or nonprescription medication or herbal

products, including chloroquine phosphate or hydroxychloroquine sulfate [see *Warnings and Precautions (5.3), Drug Interactions (7), and Microbiology (12.4)*].

Pregnancy Registry

Advise patients that there is a pregnancy registry that monitors pregnancy outcomes in individuals exposed to VEKLURY during pregnancy [see *Use in Specific Populations (8.1)*].

Pregnancy

Inform patients to notify their healthcare provider in the event of a pregnancy [see *Use in Specific Populations (8.1)*].

VEKLURY is a trademark of Gilead Sciences, Inc., or its related companies. All other trademarks referenced herein are the property of their respective owners.

© 2023 Gilead Sciences, Inc. All rights reserved

VEKLURY® (VEK-lur-ee) (remdesivir) for injection	PATIENT INFORMATION	VEKLURY® (VEK-lur-ee) (remdesivir) injection
<p>What is VEKLURY?</p> <p>VEKLURY is a prescription medicine used for the treatment of coronavirus disease 2019 (COVID-19) in adults and children 28 days of age and older and weighing at least 7 pounds (3 kg) who are:</p> <ul style="list-style-type: none"> • Hospitalized, or • Not hospitalized and have mild-to-moderate COVID-19, and are at high risk for progression to severe COVID-19, including hospitalization or death. <p>It is not known if VEKLURY is safe and effective in children under 28 days of age or weighing less than 7 pounds (3 kg).</p>		
<p>Do not take VEKLURY if you are allergic to remdesivir or any of the ingredients in VEKLURY. See the end of this leaflet for a complete list of ingredients in VEKLURY.</p>		
<p>Before receiving VEKLURY, tell your healthcare provider about all of your medical conditions, including if you:</p> <ul style="list-style-type: none"> • have kidney problems • have liver problems • are pregnant or plan to become pregnant. It is not known if VEKLURY may harm your unborn baby if taken during the first trimester of pregnancy. Tell your healthcare provider right away if you are or if you become pregnant. <p>Pregnancy Registry: There is a pregnancy registry for individuals who receive VEKLURY during pregnancy. The purpose of this registry is to collect information about the health of you and your baby. Talk with your healthcare provider about how you can take part in this registry.</p> <ul style="list-style-type: none"> • are breastfeeding or plan to breastfeed. VEKLURY can pass into your breast milk. Talk to your healthcare provider about the best way to feed your baby. <p>Tell your healthcare provider about all the medicines you take, including prescription and over-the-counter medicines, vitamins, and herbal supplements. VEKLURY may interact with other medicines.</p> <p>Especially tell your healthcare provider if you are taking the medicines chloroquine phosphate or hydroxychloroquine sulfate.</p>		
<p>How will I receive VEKLURY?</p> <ul style="list-style-type: none"> • Hospitalized: VEKLURY is given to you through a vein by intravenous (IV) infusion one time each day for up to 10 days. Your healthcare provider will decide how many doses you need. • Not hospitalized: VEKLURY is given to you through a vein by intravenous (IV) infusion one time each day for 3 days. • Your healthcare provider will do certain blood tests before starting and during treatment with VEKLURY. 		
<p>What are the possible side effects of VEKLURY?</p> <p>VEKLURY may cause serious side effects, including:</p> <ul style="list-style-type: none"> • Allergic reactions. Allergic reactions can happen during or after infusion with VEKLURY. Your healthcare provider will monitor you for signs and symptoms of allergic reactions during your infusion and for at least 1 hour after your infusion. Tell your healthcare provider right away if you get any of the following signs and symptoms of an allergic reaction: <ul style="list-style-type: none"> <li style="width: 50%;">○ changes in your heart rate <li style="width: 50%;">○ rash <li style="width: 50%;">○ fever <li style="width: 50%;">○ nausea <li style="width: 50%;">○ shortness of breath, wheezing <li style="width: 50%;">○ sweating <li style="width: 50%;">○ swelling of the lips, face, or throat <li style="width: 50%;">○ shivering • Increase in liver enzymes. Increases in liver enzymes are common in people who have received VEKLURY and may be a sign of liver injury. Your healthcare provider will do blood tests to check your liver enzymes before and during treatment with VEKLURY as needed. Your healthcare provider may stop treatment with VEKLURY if you develop liver problems. <p>The most common side effect of VEKLURY is nausea.</p> <p>These are not all of the possible side effects of VEKLURY.</p> <p>Call your doctor for medical advice about side effects. You may report side effects to FDA at 1-800-FDA-1088.</p>		

General information about the safe and effective use of VEKLURY.

Medicines are sometimes prescribed for purposes other than those listed in a Patient Information leaflet. You can ask your pharmacist or healthcare provider for information about VEKLURY that is written for healthcare professionals.

What are the ingredients in VEKLURY?

Active ingredient: remdesivir

Inactive ingredients:

VEKLURY for injection: betadex sulfobutyl ether sodium and may include hydrochloric acid and/or sodium hydroxide for pH adjustment.

VEKLURY injection: betadex sulfobutyl ether sodium, Water for Injection, USP, and may include hydrochloric acid and/or sodium hydroxide for pH adjustment.

Manufactured and distributed by: Gilead Sciences, Inc., Foster City, CA 94404

VEKLURY is a trademark of Gilead Sciences, Inc., or its related companies. All other trademarks referenced herein are the property of their respective owners.

© 2023 Gilead Sciences, Inc. All rights reserved.

214787-GS-013

For more information, call 1-800-445-3235 or go to www.VEKLURY.com.

This Patient Information has been approved by the U.S. Food and Drug Administration.

Revised: 06/2023