

HIGHLIGHTS OF PRESCRIBING INFORMATION

These highlights do not include all the information needed to use QUVIVIQ safely and effectively. See full prescribing information for QUVIVIQ.

QUVIVIQ (daridorexant) tablets, for oral use, CIV
Initial U.S. Approval: 2022

RECENT MAJOR CHANGES

Contraindications (4) 10/2023
Warnings and Precautions (5.5) 9/2024

INDICATIONS AND USAGE

QUVIVIQ is an orexin receptor antagonist indicated for the treatment of adult patients with insomnia, characterized by difficulties with sleep onset and/or sleep maintenance. (1)

DOSAGE AND ADMINISTRATION

- The recommended dosage is 25 mg to 50 mg once per night, taken orally within 30 minutes before going to bed, with at least 7 hours remaining prior to planned awakening. (2.1)
- Time to sleep onset may be delayed if taken with or soon after a meal. (2.1)
- Hepatic Impairment: (2.3)
 - Moderate hepatic impairment: Maximum recommended dosage is 25 mg no more than once per night.
 - Severe hepatic impairment: Not recommended.

DOSAGE FORMS AND STRENGTHS

Tablets: 25 mg, 50 mg. (3)

CONTRAINDICATIONS

- Narcolepsy. (4)
- Known hypersensitivity to daridorexant or other components of QUVIVIQ. (4)

WARNINGS AND PRECAUTIONS

- CNS-Depressant Effects and Daytime Impairment: Impairs alertness and motor coordination including morning impairment. Risk increases when used with other central nervous system (CNS) depressants. For patients taking QUVIVIQ, caution against next-day driving and other activities requiring complete mental alertness. (5.1)
- Worsening of Depression/Suicidal Ideation: Worsening of depression or suicidal thinking may occur. (5.2)
- Sleep Paralysis, Hypnagogic/Hypnopompic Hallucinations, and Cataplexy-like Symptoms: May occur with use of QUVIVIQ. (5.3)
- Complex Sleep Behaviors: Behaviors including sleepwalking, sleep driving, and engaging in other activities while not fully awake may occur. Discontinue immediately if complex sleep behavior occurs. (5.4)
- Compromised Respiratory Function: Effect on respiratory function should be considered. (5.5, 8.7)
- Need to Evaluate for Co-morbid Diagnoses: Reevaluate if insomnia persists after 7 to 10 days. (5.6)

ADVERSE REACTIONS

The most common adverse reactions (reported in $\geq 5\%$ of patients treated with QUVIVIQ and at an incidence \geq than placebo) were headache and somnolence or fatigue. (6.1)

To report SUSPECTED ADVERSE REACTIONS, contact Idorsia Pharmaceuticals Ltd at toll-free phone 1-833-400-9611 or FDA at 1-800-FDA-1088 or www.fda.gov/medwatch.

DRUG INTERACTIONS

- Strong CYP3A4 inhibitors: Avoid concomitant use. (2.2, 7.1)
- Moderate CYP3A4 inhibitors: Maximum recommended dose is 25 mg. (2.2, 7.1)
- Moderate or Strong CYP3A4 inducers: Avoid concomitant use. (7.1)

See 17 for PATIENT COUNSELING INFORMATION and Medication Guide.

Revised: 9/2024

FULL PRESCRIBING INFORMATION: CONTENTS*

1 INDICATIONS AND USAGE

2 DOSAGE AND ADMINISTRATION

- 2.1 Recommended Dosage
- 2.2 Dosage Recommendations for Concomitant Use with CYP3A4 Inhibitors or CYP3A4 Inducers
- 2.3 Dosage Recommendations for Patients with Hepatic Impairment

3 DOSAGE FORMS AND STRENGTHS

4 CONTRAINDICATIONS

5 WARNINGS AND PRECAUTIONS

- 5.1 CNS-Depressant Effects and Daytime Impairment
- 5.2 Worsening of Depression/Suicidal Ideation
- 5.3 Sleep Paralysis, Hypnagogic/Hypnopompic Hallucinations, and Cataplexy-like Symptoms
- 5.4 Complex Sleep Behaviors
- 5.5 Patients with Compromised Respiratory Function
- 5.6 Need to Evaluate for Co-morbid Diagnoses

6 ADVERSE REACTIONS

- 6.1 Clinical Trials Experience
- 6.2 Post-Marketing Experience

7 DRUG INTERACTIONS

- 7.1 Effects of Other Drugs on QUVIVIQ
- 7.2 Effects of QUVIVIQ on Other Drugs

8 USE IN SPECIFIC POPULATIONS

- 8.1 Pregnancy
- 8.2 Lactation
- 8.4 Pediatric Use

8.5 Geriatric Use

8.6 Hepatic Impairment

8.7 Patients with Compromised Respiratory Function

9 DRUG ABUSE AND DEPENDENCE

9.1 Controlled Substance

9.2 Abuse

9.3 Dependence

10 OVERDOSAGE

11 DESCRIPTION

12 CLINICAL PHARMACOLOGY

12.1 Mechanism of Action

12.2 Pharmacodynamics

12.3 Pharmacokinetics

13 NONCLINICAL TOXICOLOGY

13.1 Carcinogenesis, Mutagenesis, Impairment of Fertility

13.2 Animal Toxicology and/or Pharmacology

14 CLINICAL STUDIES

14.1 Controlled Clinical Studies

14.2 Special Safety Studies

16 HOW SUPPLIED/STORAGE AND HANDLING

16.1 How Supplied

16.2 Storage and Handling

17 PATIENT COUNSELING INFORMATION

* Sections or subsections omitted from the full prescribing information are not listed.

FULL PRESCRIBING INFORMATION

1 INDICATIONS AND USAGE

QUVIVIQ is indicated for the treatment of adult patients with insomnia, characterized by difficulties with sleep onset and/or sleep maintenance [see *Clinical Studies (14.1)*].

2 DOSAGE AND ADMINISTRATION

2.1 Recommended Dosage

The recommended dosage range is 25 mg to 50 mg of QUVIVIQ taken orally no more than once per night within 30 minutes of going to bed (with at least 7 hours remaining prior to planned awakening).

Time to sleep onset may be delayed if taken with or soon after a meal [see *Clinical Pharmacology (12.3)*].

2.2 Dosage Recommendations for Concomitant Use with CYP3A4 Inhibitors or CYP3A4 Inducers

Co-administration with Strong CYP3A4 Inhibitors

Avoid concomitant use of QUVIVIQ with strong inhibitors of CYP3A4 [see *Drug Interactions (7.1)*, *Clinical Pharmacology (12.3)*].

Co-administration with Moderate CYP3A4 Inhibitors

The recommended dosage of QUVIVIQ is 25 mg no more than once per night when used with moderate inhibitors of CYP3A4 [see *Drug Interactions (7.1)*, *Clinical Pharmacology (12.3)*].

Co-administration with Strong or Moderate CYP3A4 Inducers

Avoid concomitant use of QUVIVIQ with strong or moderate CYP3A4 inducers [see *Drug Interactions (7.1)*].

2.3 Dosage Recommendations for Patients with Hepatic Impairment

The maximum recommended dosage in patients with moderate hepatic impairment (Child-Pugh score 7–9) is 25 mg of QUVIVIQ no more than once per night [see *Use in Specific Populations (8.6)*, *Clinical Pharmacology (12.3)*].

QUVIVIQ is not recommended in patients with severe hepatic impairment (Child-Pugh score ≥ 10) [see *Use in Specific Populations (8.6)*].

3 DOSAGE FORMS AND STRENGTHS

QUVIVIQ (daridorexant) tablets are available as:

25 mg: light purple, arc-triangle shaped, film-coated tablet debossed with “25” on one side and “i” (Idorsia logo) on the other side, containing 25 mg daridorexant.

50 mg: light orange, arc-triangle shaped, film-coated tablet debossed with “50” on one side and “i” (Idorsia logo) on the other side, containing 50 mg daridorexant.

4 CONTRAINDICATIONS

QUVIVIQ is contraindicated:

- in patients with narcolepsy.
- in patients with a history of hypersensitivity to daridorexant or any components of QUVIVIQ. Angioedema with pharyngeal involvement has been reported [see *Adverse Reactions (6.2)*].

5 WARNINGS AND PRECAUTIONS

5.1 CNS-Depressant Effects and Daytime Impairment

QUVIVIQ is a central nervous system (CNS) depressant that can impair daytime wakefulness even when used as prescribed. CNS-depressant effects may persist in some patients for up to several days after discontinuing QUVIVIQ. Prescribers should advise patients about the potential for next-day somnolence.

Driving ability was impaired in some subjects taking QUVIVIQ 50 mg [see *Clinical Studies (14.2)*]. The risk of daytime impairment is increased if QUVIVIQ is taken with less than a full night of sleep remaining or if a higher than recommended dose is taken [see *Dosage and Administration (2.1)*]. If QUVIVIQ is taken in these circumstances, caution patients against driving and other activities requiring complete mental alertness.

Co-administration with other CNS depressants (e.g., benzodiazepines, opioids, tricyclic antidepressants, alcohol) increases the risk of CNS depression, which can cause daytime impairment. Dosage adjustments of QUVIVIQ and of concomitant CNS depressants may be necessary when administered together because of potentially additive effects. The use of QUVIVIQ with other drugs to treat insomnia is not recommended. Advise patients not to consume alcohol in combination with QUVIVIQ because co-administration of QUVIVIQ with alcohol resulted in additive effects on psychomotor performance [see *Drug Interactions (7.1)*].

Because QUVIVIQ can cause drowsiness, patients, particularly the elderly, are at a higher risk of falls.

5.2 Worsening of Depression/Suicidal Ideation

Patients with psychiatric disorders, including insomnia, are at increased risk of suicide. In primarily depressed patients treated with hypnotics, worsening of depression and suicidal thoughts and actions (including completed suicides) have been reported. As with other hypnotics, QUVIVIQ should be

administered with caution in patients exhibiting symptoms of depression. Monitoring of suicide risk and protective measures may be required.

5.3 Sleep Paralysis, Hypnagogic/Hypnopompic Hallucinations, and Cataplexy-like Symptoms

Sleep paralysis, an inability to move or speak for up to several minutes during sleep-wake transitions, and hypnagogic/hypnopompic hallucinations, including vivid and disturbing perceptions, can occur with the use of QUVIVIQ [see *Adverse Reactions (6.1)*]. Prescribers should explain the nature of these events to patients when prescribing QUVIVIQ.

Symptoms similar to mild cataplexy have been reported with orexin receptor antagonists. Such symptoms can include periods of leg weakness lasting from seconds to a few minutes, can occur either at night or during the day, and may not be associated with an identified triggering event (e.g., laughter or surprise).

5.4 Complex Sleep Behaviors

Complex sleep behaviors, including sleepwalking, sleep driving, and engaging in other activities while not fully awake (e.g., preparing and eating food, making phone calls, having sex), have been reported to occur with the use of hypnotics, including orexin receptor antagonists such as QUVIVIQ. These events can occur in hypnotic-naïve as well as in hypnotic-experienced persons. Patients usually do not remember these events. Complex sleep behaviors may occur following the first or any subsequent use of hypnotics, such as QUVIVIQ, with or without the concomitant use of alcohol and other CNS depressants [see *Drug Interactions (7.1)*]. Discontinue QUVIVIQ immediately if a patient experiences a complex sleep behavior.

5.5 Patients with Compromised Respiratory Function

QUVIVIQ has been studied in mild to severe OSA not using CPAP, and in patients with moderate COPD. The effects of QUVIVIQ on respiratory function should be considered if prescribed to patients with compromised respiratory function. QUVIVIQ has not been studied in patients with mild or severe COPD [see *Use in Specific Populations (8.7)*].

5.6 Need to Evaluate for Co-morbid Diagnoses

Because sleep disturbances may be the presenting manifestation of a medical and/or psychiatric disorder, treatment of insomnia should be initiated only after careful evaluation of the patient. The failure of insomnia to remit after 7 to 10 days of treatment may indicate the presence of a primary psychiatric and/or medical illness that should be evaluated. Worsening of insomnia or the emergence of new cognitive or behavioral abnormalities may be the result of an unrecognized underlying psychiatric or medical disorder and can emerge during the course of treatment with sleep-promoting drugs such as QUVIVIQ.

6 ADVERSE REACTIONS

The following are discussed in detail in other sections of the labeling:

- CNS-Depressant Effects and Daytime Impairment [see *Warnings and Precautions (5.1)*]
- Worsening of Depression/Suicidal Ideation [see *Warnings and Precautions (5.2)*]

- Sleep Paralysis, Hypnagogic/Hypnopompic Hallucinations, and Cataplexy-like Symptoms [see *Warnings and Precautions (5.3)*]
- Complex Sleep Behaviors [see *Warnings and Precautions (5.4)*]
- Patients with Compromised Respiratory Function [see *Warnings and Precautions (5.5)*]

6.1 Clinical Trials Experience

Because clinical trials are conducted under widely varying conditions, adverse reaction rates observed in clinical trials of a drug cannot be directly compared to rates in clinical trials of another drug and may not reflect the rates observed in practice.

The safety of QUVIVIQ was evaluated in three placebo-controlled clinical studies (two 3-month studies of identical design [Study 1 and Study 2], and a 9-month extension study [Study 3]). Study 1 evaluated 50 mg and 25 mg doses of QUVIVIQ, while Study 2 evaluated a 25 mg dose and a 10 mg dose of QUVIVIQ. The 10 mg dose is not an approved dose. A total of 1232 patients (including approximately 40% elderly patients [≥ 65 years old]), received QUVIVIQ 50 mg (N = 308); 25 mg (N = 618); or 10 mg (an unapproved dose) (N = 306). A total of 576 patients were treated with QUVIVIQ for at least 6 months and 331 for at least 12 months.

Most Common Adverse Reactions

The most common reported adverse reaction (in at least 5% of patients and greater than placebo) during double-blind treatment in Study 1 was headache.

Table 1 shows adverse reactions that occurred in at least 2% of patients treated with QUVIVIQ and more frequently than in patients who received placebo in Study 1.

Table 1 Adverse Reactions Reported in $\geq 2\%$ of QUVIVIQ-treated Patients and Greater than in Placebo-treated Patients in a 3-Month Placebo-Controlled Study (Study 1)

	QUVIVIQ 25 mg (N=310) %	QUVIVIQ 50 mg (N=308) %	Placebo (N=309) %
Nervous System Disorders			
Headache*	6	7	5
Somnolence or fatigue*	6	5	4
Dizziness*	2	3	2
Gastro-intestinal disorders			
Nausea*	0	3	2

*The following terms were combined:

Headache includes: headache, tension headache, migraine, migraine with aura, head discomfort

Somnolence or fatigue includes: somnolence, sedation, fatigue, hypersomnia, lethargy

Dizziness includes: dizziness, vertigo, labyrinthitis

Nausea includes: nausea, vomiting, procedural nausea

Other Adverse Reactions Observed During Clinical Trials (Study 1 and Study 2)

Other adverse reactions of $< 2\%$ frequency but greater than placebo are shown below. The following do not include adverse reactions 1) for which a drug cause was remote, 2) that were so general as to

be uninformative, or 3) that were not considered to have clinically significant implications.

- Sleep paralysis was reported in 0.5% and 0.3% of patients receiving QUVIVIQ 25 mg and 50 mg, respectively, compared to no reports for placebo.
- Hypnagogic and hypnopompic hallucinations were reported in 0.6% of patients receiving QUVIVIQ 25 mg compared to no cases with QUVIVIQ 50 mg or placebo.

6.2 Post-Marketing Experience

The following adverse reactions have been identified during post-approval use of QUVIVIQ. Because these reactions are reported voluntarily from a population of uncertain size, it is not always possible to reliably estimate their frequency or establish a causal relationship to drug exposure.

Psychiatric disorders: Nightmares or abnormal dreams

Immune system disorders: Hypersensitivity (including angioedema, rash, urticaria)

7 DRUG INTERACTIONS

7.1 Effects of Other Drugs on QUVIVIQ

Table 2 describes clinically significant drug interactions where the concomitant use of other drugs affects QUVIVIQ.

Table 2 Effects of Other Drugs on QUVIVIQ

Strong or Moderate CYP3A4 Inhibitors	
<i>Clinical Implications:</i>	Concomitant use with a strong or moderate CYP3A4 inhibitor increases exposure to daridorexant [see <i>Clinical Pharmacology (12.3)</i>], which may increase the risk of QUVIVIQ adverse reactions.
<i>Prevention or Management:</i>	The recommended dose of QUVIVIQ is 25 mg when used with a moderate CYP3A4 inhibitor [see <i>Dosage and Administration (2.2)</i>]. Concomitant use of QUVIVIQ with a strong inhibitor of CYP3A4 is not recommended [see <i>Dosage and Administration (2.2)</i>].
Strong and Moderate CYP3A4 Inducers	
<i>Clinical Implications:</i>	Concomitant use with a strong or moderate CYP3A4 inducer decreases exposure to daridorexant [see <i>Clinical Pharmacology (12.3)</i>], which may reduce the efficacy of QUVIVIQ.
<i>Prevention or Management:</i>	Concomitant use of QUVIVIQ with a strong or moderate inducer of CYP3A4 is not recommended [see <i>Dosage and Administration (2.2)</i>].

Alcohol and Other CNS Depressants	
<i>Clinical Implications:</i>	Concomitant use of alcohol or other CNS depressants with QUVIVIQ may lead to additive impairment of psychomotor performance and risk of CNS depression [see <i>Clinical Pharmacology (12.2)</i>].
<i>Prevention or Management:</i>	Avoid alcohol consumption with QUVIVIQ [see <i>Warnings and Precautions (5.1)</i>]. Use with caution in patients receiving CNS depressants. Consider dose adjustment of QUVIVIQ and/or the CNS depressant(s) if used concomitantly [see <i>Warnings and Precautions (5.1)</i>].

7.2 Effects of QUVIVIQ on Other Drugs

Table 3 describes clinically significant drug interactions where the concomitant use of QUVIVIQ affects other drugs.

Table 3 Effects of QUVIVIQ on Other Drugs

CYP3A4 Substrates	
<i>Clinical Implications:</i>	Concomitant use of QUVIVIQ with CYP3A4 substrates increases the exposure to CYP3A4 substrate [see <i>Clinical Pharmacology (12.3)</i>].
<i>Prevention or Management:</i>	Use with caution in patients receiving CYP3A4 substrates with narrow therapeutic index.
P-gp Substrates	
<i>Clinical Implications:</i>	Concomitant use of QUVIVIQ with P-gp substrates increases the exposure to P-gp substrate [see <i>Clinical Pharmacology (12.3)</i>].
<i>Prevention or Management:</i>	Use with caution in patients receiving P-gp substrates with a narrow therapeutic index.

8 USE IN SPECIFIC POPULATIONS

8.1 Pregnancy

Pregnancy Exposure Registry

There will be a pregnancy exposure registry that monitors pregnancy outcomes in women exposed to QUVIVIQ during pregnancy. Pregnant women exposed to QUVIVIQ and healthcare providers are encouraged to call Idorsia Pharmaceuticals Ltd at 1-833-400-9611.

Risk Summary

There are no available data on QUVIVIQ use in pregnant women to evaluate for drug-associated risks of major birth defects, miscarriage, or other adverse maternal or fetal outcomes. In animal reproduction studies, oral administration of daridorexant to pregnant rats and rabbits during the period of organogenesis did not cause fetal toxicity or malformation at doses up to 8 and 10 times the maximum recommended human dose (MRHD) of 50 mg, respectively, based on AUC. Oral

administration of daridorexant to pregnant and lactating rats did not cause any maternal or developmental toxicity at doses up to 9 times the MRHD, based on AUC (*see Data*).

The estimated background risk of major birth defects and miscarriage for the indicated population is unknown. All pregnancies have a background risk of birth defect, loss, or other adverse outcomes. In the U.S. general population, the estimated background risk of major birth defects and miscarriage in clinically recognized pregnancies is 2% to 4% and 15% to 20%, respectively.

Data

Animal Data

Daridorexant was administered orally to pregnant rats during the period of organogenesis at doses of 30, 100, and 300 mg/kg/day, which are approximately 1, 3, and 8 times the MRHD of 50 mg, respectively, based on AUC. Daridorexant did not cause any maternal or embryofetal toxicities or fetal malformation at doses up to 300 mg/kg/day. The NOAEL for maternal and fetal toxicity is 300 mg/kg/day, which is approximately 8 times the MRHD of 50 mg, based on AUC.

Daridorexant was administered orally to pregnant rabbits during the period of organogenesis at doses of 30, 60, and 120 mg/kg/day, which are approximately 3, 4, and 10 times the MRHD of 50 mg, respectively, based on AUC. Daridorexant did not cause any fetal toxicity or malformation at doses up to 120 mg/kg/day. Daridorexant caused maternal toxicities of decreased weight gain and food consumption at the dose of 120 mg/kg/day. The NOAELs for maternal and fetal toxicity are 60 and 120 mg/kg/day, respectively, which are approximately 4 and 10 times the MRHD of 50 mg, respectively, based on AUC.

Daridorexant was administered orally to pregnant rats during gestation and lactation at doses of 50, 100, and 300 mg/kg/day, which are approximately 1, 3, and 9 times the MRHD of 50 mg, respectively, based on AUC. Daridorexant did not cause any maternal or developmental toxicities at doses up to 300 mg/kg/day. The NOAEL for maternal and developmental toxicity is 300 mg/kg/day, which is approximately 9 times the MRHD of 50 mg, based on AUC.

8.2 Lactation

Risk Summary

Daridorexant is present in human breast milk in low amounts. In a clinical lactation study, daridorexant was detected in human milk at a mean daily infant dose of 0.0016 mg/kg, with a relative infant dose of <1% the maternal weight-adjusted dose (*see Data*). There are no data on the effects of daridorexant on the breastfed infant or its effects on milk production.

Infants exposed to QUVIVIQ through breastmilk should be monitored for excessive sedation. The developmental and health benefits of breastfeeding should be considered along with the mother's clinical need for QUVIVIQ and any potential adverse effects on the breastfed infant from QUVIVIQ or from the underlying maternal condition.

Data

A lactation study in 10 healthy adult lactating women evaluated the concentrations of daridorexant in plasma and breast milk following a single dose of 50 mg daridorexant. The calculated mean daily infant dose is 0.0016 mg/kg based on an assumed infant body weight of 6 kg, and the relative infant dose is 0.22% of the maternal weight-adjusted dose. Approximately 87% of the total amount of daridorexant present in milk was detected by 24 hours after administration. The amount of daridorexant present in breast milk at steady state is expected to be similar to that after a single dose.

8.4 Pediatric Use

The safety and effectiveness of QUVIVIQ have not been established in pediatric patients.

8.5 Geriatric Use

No dose adjustment is required in patients over the age of 65 years.

Of the total number of subjects in the clinical studies of QUVIVIQ with insomnia (N = 1854), approximately 39% (N = 727) were ≥ 65 years and 5.9% (N = 110) were ≥ 75 years. The likelihood of somnolence and fatigue increased with patient age.

Because QUVIVIQ can increase somnolence and drowsiness, patients, particularly the elderly, are at higher risk of falls [see *Warnings and Precautions (5.1)*].

8.6 Hepatic Impairment

QUVIVIQ has not been studied in patients with severe hepatic impairment (Child-Pugh score ≥ 10). Use in this population is not recommended [see *Clinical Pharmacology (12.3)*].

Reduce the dose of QUVIVIQ in patients with moderate hepatic impairment (Child-Pugh score 7–9) [see *Dosage and Administration (2.3)*]. Moderate hepatic impairment may increase daridorexant systemic exposure to a clinically relevant extent [see *Clinical Pharmacology (12.3)*], which may increase the frequency or severity of adverse reactions.

8.7 Patients with Compromised Respiratory Function

Obstructive Sleep Apnea

The respiratory depressant effect of QUVIVIQ was evaluated after one night and after five consecutive nights of treatment with QUVIVIQ 50 mg in a randomized, placebo-controlled, two-period crossover study in 25 patients with mild to moderate OSA (apnea-hypopnea index [AHI] 5 to 30 events per hour of sleep) not using CPAP. Following once-daily dosing of 50 mg in the evening, the mean treatment difference (daridorexant – placebo) on Day 5 for AHI was 0.74 (90% CI, -1.43 to 2.92).

QUVIVIQ was also evaluated after 5 consecutive nights of treatment with QUVIVIQ 50 mg in a randomized, placebo-controlled, double-blind, two-period crossover study in 16 patients with severe OSA (apnea-hypopnea index ≥ 30 events per hour of sleep; studied range 30.8–82.2 events per

hour) not using CPAP. Following once daily dosing of 50 mg in the evening, the mean treatment difference (daridorexant – placebo) on Day 5 for AHI was -3.74 (90% CI, -11.71 to 4.23).

Due to study limitations, including the short duration of the studies, clinically meaningful respiratory effects of QUVIVIQ in OSA cannot be excluded, including for long-term treatment [see *Warnings and Precautions (5.5)*].

Chronic Obstructive Pulmonary Disease

The respiratory depressant effect of QUVIVIQ was evaluated after one night and after five consecutive nights of treatment with QUVIVIQ 50 mg in a randomized, placebo-controlled, two-period crossover study in 25 patients with moderate COPD (FEV_1/FVC ratio $\leq 70\%$ and $40\% \leq FEV_1 < 80\%$ of predicted). Following once-daily dosing of 50 mg in the evening, the mean SpO₂ treatment difference (daridorexant – placebo) on Day 5 was 0.18% (90% CI, -0.21 to 0.57).

QUVIVIQ has not been studied in patients with mild ($FEV_1 \geq 80\%$ predicted) or severe COPD ($FEV_1 < 40\%$ of predicted).

Clinically meaningful respiratory effects of QUVIVIQ in patients with compromised respiratory function cannot be excluded [see *Warnings and Precautions (5.5)*].

9 DRUG ABUSE AND DEPENDENCE

9.1 Controlled Substance

QUVIVIQ contains daridorexant, a Schedule IV controlled substance.

9.2 Abuse

Drug abuse is the intentional, non-therapeutic use of a drug, even once, for its desirable psychological or physiological effects. The abuse potential of daridorexant was evaluated in preclinical models, recreational sedative drug users, and insomnia subjects.

In a human abuse potential study conducted in 63 recreational sedative drug users, the effect of single-dose administration of QUVIVIQ [50 mg, 100 mg (two times the maximum recommended dose), and 150 mg (three times the maximum recommended dose)], zolpidem (30 mg), suvorexant (150 mg), and placebo on subjective rating of “drug liking” was evaluated. At the dose of 50 mg, QUVIVIQ showed significantly lower “drug liking” ratings than zolpidem (30 mg) and suvorexant (150 mg), but significantly higher than placebo. At doses of 100 mg (two times the maximum recommended dose) and 150 mg (three times the maximum recommended dose), QUVIVIQ showed similar “drug liking” ratings to zolpidem (30 mg) and suvorexant (150 mg).

In placebo-controlled Phase 3 clinical studies in which 1232 subjects with insomnia were treated with QUVIVIQ for up to 12 months, there were no reports indicative of abuse liability. Because individuals with a history of abuse of or addiction to alcohol or other drugs may be at increased risk for abuse of or addiction to QUVIVIQ, follow such patients carefully.

9.3 Dependence

Physical dependence is a state that develops as a result of physiological adaptation in response to repeated drug use, manifested by withdrawal signs and symptoms upon abrupt treatment discontinuation or a significant dose reduction of a drug.

In animal studies and clinical trials evaluating physical dependence, chronic administration of daridorexant did not produce withdrawal signs or symptoms upon drug discontinuation. This suggests that daridorexant does not produce physical dependence.

10 OVERDOSAGE

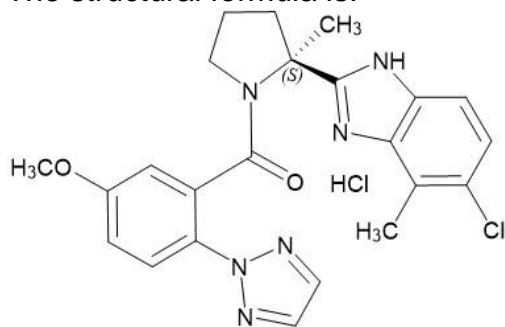
There is limited clinical experience with QUVIVIQ overdose. In clinical pharmacology studies, healthy subjects were administered single doses of up to 200 mg (4 times the maximum recommended dose) of QUVIVIQ. The following adverse reactions were observed: somnolence, muscle weakness, cataplexy-like symptoms, sleep paralysis, disturbance in attention, fatigue, headache, and constipation.

There is no specific antidote to an overdose of QUVIVIQ. In the event of an overdose, general symptomatic and supportive medical care, along with immediate gastric lavage where appropriate, should be provided and patients should be carefully monitored. Dialysis is unlikely to be effective as daridorexant is highly protein bound. Consider contacting the Poison Help Line (1-800-222-1222) or a medical toxicologist for additional overdose management recommendations.

11 DESCRIPTION

QUVIVIQ contains daridorexant, an orexin receptor antagonist, present as daridorexant hydrochloride salt. The chemical name of daridorexant hydrochloride is (S)-(2-(5-chloro-4-methyl-1*H*-benzo[*d*]imidazol-2-yl)-2-methylpyrrolidin-1-yl)(5-methoxy-2-(2*H*-1,2,3-triazol-2-yl)phenyl)methanone hydrochloride. The molecular formula is $C_{23}H_{23}N_6O_2Cl \cdot HCl$. The molecular weight is 487.38 g/mol.

The structural formula is:



Daridorexant hydrochloride is a white to light yellowish powder that is very slightly soluble in water.

QUVIVIQ tablets are intended for oral administration. Each film-coated tablet contains daridorexant 25 mg or 50 mg, equivalent to 27 mg or 54 mg of daridorexant hydrochloride, respectively. The inactive ingredients are croscarmellose sodium, magnesium stearate, mannitol, microcrystalline cellulose, povidone, and silicon dioxide.

In addition, the film coating contains the following inactive ingredients: glycerin, hypromellose, iron oxide black, iron oxide red, microcrystalline cellulose, talc, titanium dioxide, and, in the 50 mg tablet only, iron oxide yellow.

12 CLINICAL PHARMACOLOGY

12.1 Mechanism of Action

The mechanism of action of daridorexant in the treatment of insomnia is presumed to be through antagonism of orexin receptors. The orexin neuropeptide signaling system plays a role in wakefulness. Blocking the binding of wake-promoting neuropeptides orexin A and orexin B to receptors OX1R and OX2R is thought to suppress wake drive.

12.2 Pharmacodynamics

Daridorexant binds to and inhibits the orexin receptors OX1R and OX2R ($K_i = 0.47$ and 0.93 nM, respectively).

Cardiac Electrophysiology

At a dose 4 times the maximum recommended dose, QUVIVIQ does not prolong the QTc interval to any clinically relevant extent.

Alcohol

Co-administration of a single 50 mg dose of QUVIVIQ with alcohol at a blood level of 0.6 g/L led to additive effects on impairment of psychomotor performance (postural stability and alertness). Daridorexant did not affect alcohol concentrations and alcohol did not affect daridorexant concentrations [see *Warnings and Precautions (5.1, 5.4), Drug Interactions (7.1)*].

Citalopram

No clinically significant effect on psychomotor performance was observed when 50 mg QUVIVIQ was co-administered with 20 mg citalopram in healthy subjects at steady state.

12.3 Pharmacokinetics

Daridorexant plasma exposure is dose proportional from 25 mg to 50 mg. The daridorexant pharmacokinetic profile is similar following multiple-dose and single-dose administration with no accumulation.

Absorption

Daridorexant reaches peak plasma concentrations within 1–2 hours (T_{max}). Daridorexant has an absolute bioavailability of 62%.

Effect of food

In healthy subjects, a high-fat and high-calorie meal delayed the T_{\max} by 1.3 hours and decreased the C_{\max} by 16%, but did not affect the total exposure (AUC).

Distribution

Daridorexant has a volume of distribution of 31 L. Daridorexant is 99.7% bound to plasma proteins. The blood to plasma ratio is 0.64.

Elimination

The terminal half-life of daridorexant is approximately 8 hours.

Metabolism

Daridorexant undergoes extensive metabolism and is primarily metabolized by CYP3A4 (89%). Other CYP enzymes individually contribute to less than 3% of metabolic clearance of daridorexant.

Excretion

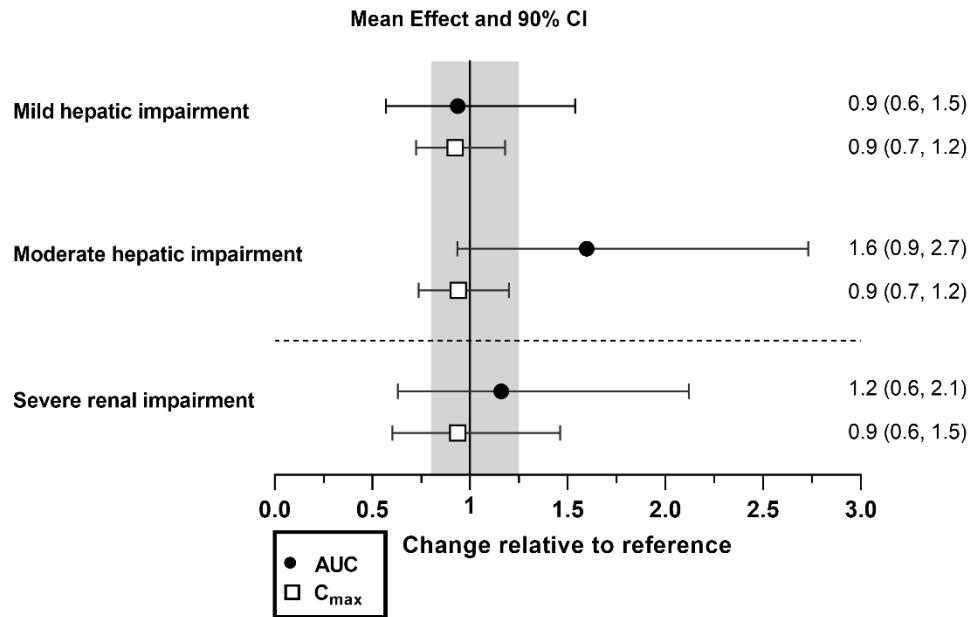
The primary route of daridorexant excretion is via feces (approximately 57%), followed by urine (approximately 28%), primarily as metabolites. Trace amounts of parent drug were found in feces and urine.

Specific Populations

Age, sex, race (White, Black, Asian), body size, and mild to severe renal impairment (Cockcroft-Gault < 30 mL/min, not on dialysis) did not have a clinically significant effect on the pharmacokinetics of daridorexant. The effect of severe hepatic impairment (Child-Pugh score ≥ 10) on the pharmacokinetics of daridorexant has not been studied.

Effects of hepatic impairment and renal impairment on the exposure to daridorexant are summarized in Figure 1.

Figure 1 **Effects of hepatic impairment and renal impairment on daridorexant PK**

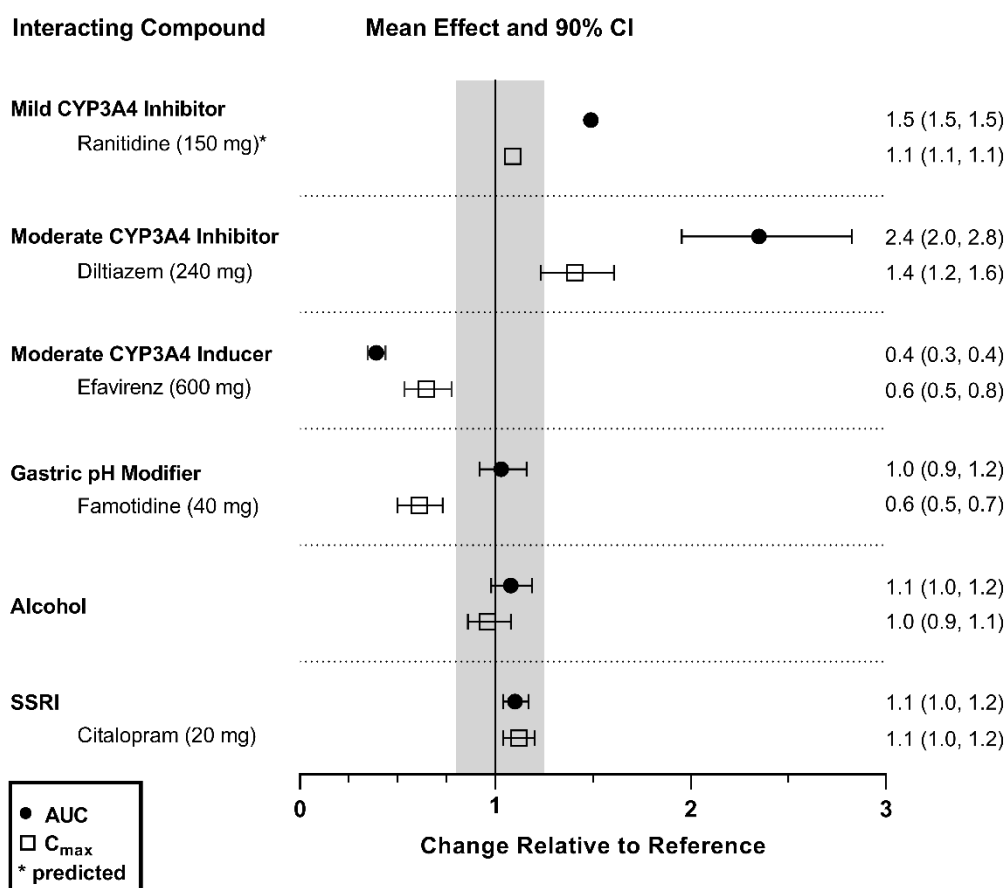


Daridorexant dose: 25 mg. Data are GMRs and 90% CIs. Hepatic impairment PK variables are based on the unbound fraction of daridorexant. Reference = matched healthy subjects. AUC = area under the plasma concentration-time curve from zero to infinity; CI = confidence interval; C_{max} = maximum plasma concentration; GMR = geometric mean ratio; PK = pharmacokinetics.

Drug Interaction Studies

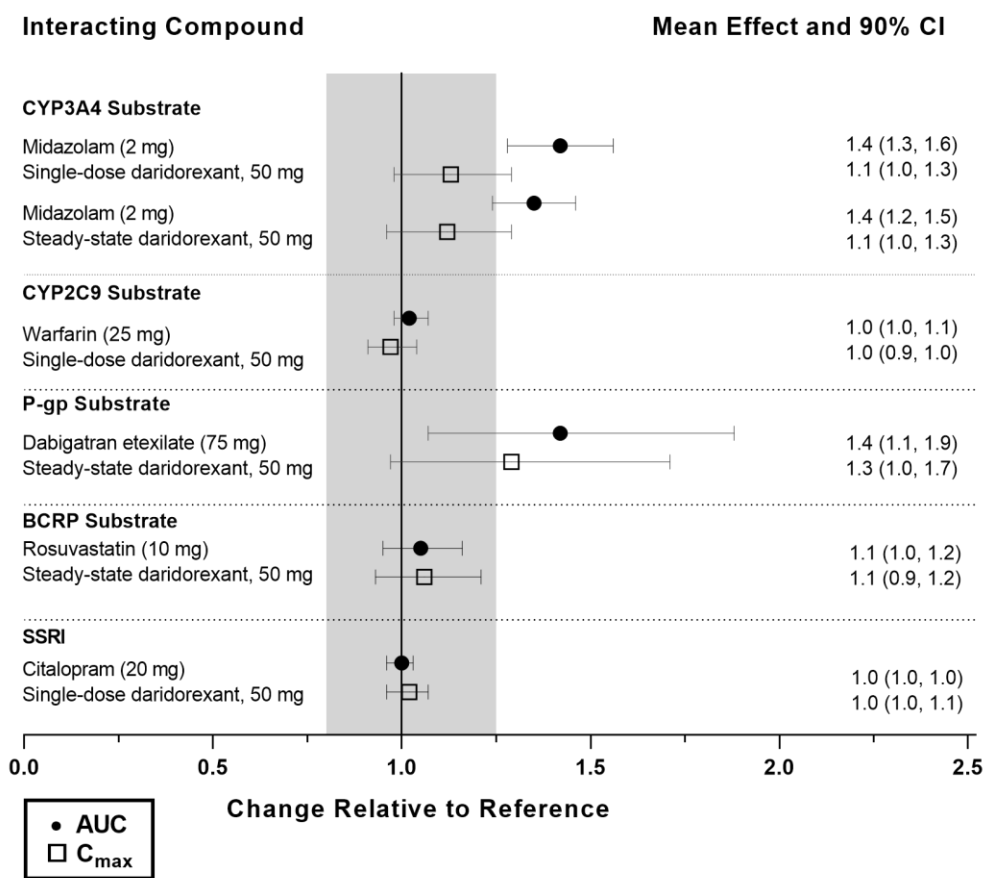
The effects of other compounds on the exposure to daridorexant are summarized in Figure 2. The effects of daridorexant on the exposure to other compounds are summarized in Figure 3.

Figure 2 Effect of co-administered compounds on the PK of daridorexant



Daridorexant 50 mg was administered with interacting drugs, except with diltiazem (25 mg daridorexant). Interacting drugs were administered in multiple-dose fashion, except famotidine (single dose) and alcohol (5 h infusion at 0.6 g/L). Based on PBPK analysis: Concomitant use of itraconazole (a strong CYP3A4 inhibitor) increased daridorexant AUC by more than 400%. Concomitant use of rifampin (a strong CYP3A4 inducer) decreased daridorexant AUC by more than 50%. Data are GMRs and 90% CIs. Some 90% CIs are too narrow to be shown. AUC = area under the plasma concentration-time curve; CI = confidence interval; C_{max} = maximum plasma concentration; GMR = geometric mean ratio; SSRI = selective serotonin reuptake inhibitor.

Figure 3 Effect of daridorexant on the PK of other compounds



AUC = area under the plasma concentration-time curve; BCRP = breast cancer resistance protein; CI = confidence interval; C_{max} = maximum plasma concentration; CP = cytochrome P450 enzyme; P-gp = P-glycoprotein; SSRI = selective serotonin reuptake inhibitor.

13 NONCLINICAL TOXICOLOGY

13.1 Carcinogenesis, Mutagenesis, Impairment of Fertility

Carcinogenesis

Daridorexant did not increase the incidence of tumors in rats treated for 2 years at oral doses of 15, 50, and 150 mg/kg/day. The high dose of 150 mg/kg/day is approximately 4 times the MRHD of 50 mg, based on AUC. Daridorexant did not increase the incidence of tumors in Tg.rasH2 mice treated for 26 weeks at oral doses of 100, 300, and 1000 mg/kg/day in males or 100, 200, and 1000 mg/kg/day in females.

Mutagenesis

Daridorexant was not mutagenic in the *in vitro* bacterial reverse mutation (Ames) assay or in the *in vitro* mammalian chromosome aberration assay in human lymphocytes and was not clastogenic in the *in vivo* rat micronucleus assay.

Impairment of Fertility

Daridorexant was orally administered to female rats at doses of 30, 100, and 300 mg/kg/day prior to and throughout mating and continuing to gestation Day 6. These doses are approximately 0.5, 3, and 9 times the MRHD of 50 mg, based on AUC. Daridorexant increased pre-implantation loss and decreased implantation sites without affecting mating or fertility at 300 mg/kg/day. The NOAEL for female fertility is 100 mg/kg/day, which is approximately 3 times the MRHD of 50 mg, based on AUC.

Daridorexant did not affect fertility when orally administered to male rats at doses of 50, 150, and 450 mg/kg/day prior to and throughout mating. These doses are approximately 1, 3, and 7 times the MRHD of 50 mg, based on AUC.

13.2 Animal Toxicology and/or Pharmacology

In dogs, daily oral administration of daridorexant at ≥ 30 mg/kg/day resulted in behavior characteristic of cataplexy when presented with positive stimulation. The no-observed-effect level (NOEL) for cataplexy is 20 mg/kg/day, which is approximately 3 times the MRHD of 50 mg, based on C_{max} and AUC.

14 CLINICAL STUDIES

14.1 Controlled Clinical Studies

The efficacy of QUVIVIQ was evaluated in two multicenter, randomized, double-blind, placebo-controlled, parallel-group studies, Study 1 (NCT03545191) and Study 2 (NCT03575104).

A total of 1854 patients with Diagnostic and Statistical Manual of Mental Disorders, 5th edition (DSM-5[®]) insomnia were randomized to receive QUVIVIQ or placebo once daily, in the evening, for 3 months. Study 1 randomized 930 subjects to QUVIVIQ 50 mg (N = 310), 25 mg (N = 310) or placebo (N = 310). Study 2 randomized 924 subjects to QUVIVIQ 25 mg (N = 309), 10 mg (N = 307), or placebo (N = 308). The 10 mg dose is not an approved dose.

At the end of the 3-month treatment period, both studies included a 7-day placebo run-out period, after which patients could enter a 9-month, double-blind, placebo-controlled extension study (Study 3, NCT03679884).

In Study 1, patients had a mean age of 55.4 years (range 18 to 88 years), with 39.1% of subjects ≥ 65 years of age, including 5.8% ≥ 75 years of age. Patients were identified as female or male and by US census-based racial and ethnic categories. The percentages of patients in the respective categories were: female sex (67.1%), White (90%), Black or African American (8%), Asian (1.0%), or Other race (< 1%).

In Study 2, patients had a mean age of 56.7 years (range 19 to 85 years), with 39.3% of subjects ≥ 65 years of age, including 6.1% ≥ 75 years of age. Patients were identified as female or male and by US census-based racial and ethnic categories. The percentages of patients in the respective categories were: female sex (69.0%), White (88%), Black or African American (8%), Asian (4%), or Other race (< 1%).

Primary efficacy endpoints for both studies were the change from baseline to Month 1 and Month 3 in Latency to Persistent Sleep (LPS) and Wake After Sleep Onset (WASO), measured objectively by polysomnography in a sleep laboratory. LPS is a measure of sleep induction and WASO is a measure of sleep maintenance.

Secondary endpoint included in the statistical testing hierarchy with Type 1 error control was patient-reported Total Sleep Time (sTST), evaluated every morning at home using a validated Sleep Diary Questionnaire (SDQ).

In Study 1, doses of 25 and 50 mg QUVIVIQ showed a statistically significant improvement vs placebo on polysomnography (LPS, WASO) and self-reported total sleep (sTST), at Month 1 and Month 3 (Table 4).

In Study 2, QUVIVIQ 25 mg showed a statistically significant improvement vs placebo on WASO and sTST at Month 1 and Month 3 (Table 5). QUVIVIQ 10 mg did not show a statistically significant improvement on LPS, WASO, or sTST at Month 1 or Month 3.

The efficacy of QUVIVIQ was similar across subgroups based on age, sex, race, and region.

Table 4 Primary and Secondary Efficacy Results for Change from Baseline in Sleep Onset, Sleep Maintenance, and Subjective Total Sleep Time at Month 1 and Month 3 in Patients with Insomnia (Study 1)

Treatment group/ dose (N)	Baseline	Month 1			Month 3		
	mean (SD)	mean (SD)	Change from baseline LSM (95%CL)	Difference to placebo LSM (95%CL)	mean (SD)	Change from baseline LSM (95%CL)	Difference to placebo LSM (95%CL)
WASO (wake after sleep onset, min): sleep maintenance, assessed by PSG							
50 mg (310)	95 (38)	65 (35)	-29 [-33, -25]	-23* [-28, -18]	65 (39)	-29 [-33, -25]	-18* [-24, -13]
25 mg (310)	98 (39)	77 (42)	-18 [-22, -15]	-12* [-17, -7]	73 (40)	-23 [-27, -19]	-12* [-17, -6]
placebo (310)	103 (41)	92 (42)	-6 [-10, -2]		87 (43)	-11 [-15, -7]	
LPS (latency to persistent sleep, min): sleep onset, assessed by PSG							
50 mg (310)	64 (37)	34 (27)	-31 [-35, -28]	-11* [-16, -7]	30 (23)	-35 [-38, -31]	-12* [-16, -7]
25 mg (310)	67 (39)	38 (32)	-28 [-32, -25]	-8* [-13, -4]	36 (34)	-31 [-34, -27]	-8* [-12, -3]
placebo (310)	67 (40)	46 (36)	-20 [-23, -17]		43 (34)	-23 [-26, -20]	
sTST (subjective total sleep time, min): patient-reported							
50 mg (310)	313 (58)	358 (74)	44 [38, 49]	22* [14, 30]	372 (79)	58 [51, 64]	20* [11, 29]
25 mg (310)	310 (60)	345 (66)	34 [29, 40]	13* [5, 20]	358 (72)	48 [41, 54]	10* [1, 19]
placebo (310)	316 (53)	338 (65)	22 [16, 27]		354 (73)	38 [31, 44]	

* doses that were statistically significantly superior ($p < 0.05$) to placebo after controlling for multiple comparisons.

CL = confidence limit; LPS = latency to persistent sleep; LSM = least squares mean; PSG = polysomnography; SD = standard deviation; sTST = subjective total sleep time; WASO = wake after sleep onset.

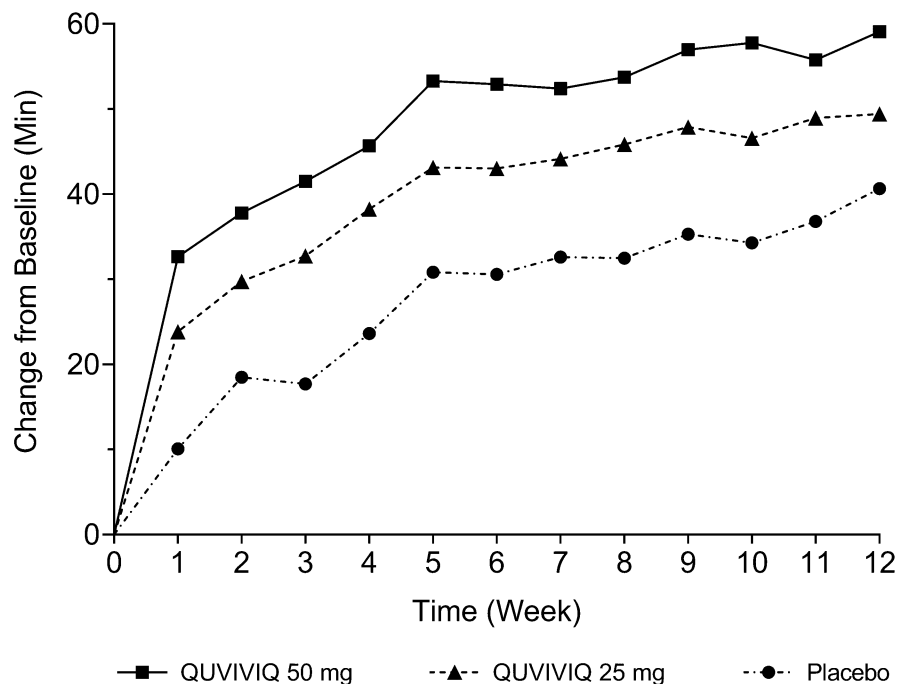
Table 5 Primary and Secondary Efficacy Results for Change from Baseline in Sleep Onset, Sleep Maintenance, and Subjective Total Sleep Time at Month 1 and Month 3 in Patients with Insomnia (Study 2)

Treatment group/ dose (N)	Baseline	Month 1			Month 3		
	mean (SD)	mean (SD)	Change from baseline LSM (95%CL)	Difference to placebo LSM (95%CL)	mean (SD)	Change from baseline LSM (95%CL)	Difference to placebo LSM (95%CL)
WASO (wake after sleep onset, min): sleep maintenance, assessed by PSG							
25 mg (309)	106 (49)	80 (44)	-24 [-28, -20]	-12* [-18, -6]	80 (49)	-24 [-29, -19]	-10* [-17, -4]
placebo (308)	108 (49)	93 (50)	-13 [-17, -8]		91 (47)	-14 [-19, -9]	
LPS (latency to persistent sleep, min): sleep onset, assessed by PSG							
25 mg (309)	69 (41)	42 (39)	-26 [-31, -22]	-6 [-12, -1]	39 (37)	-29 [-33, -24]	-9 [-15, -3]
placebo (308)	72 (46)	50 (40)	-20 [-24, -16]		49 (46)	-20 [-24, -15]	
sTST (subjective total sleep time, min): patient-reported							
25 mg (309)	308 (53)	353 (67)	44 [38, 49]	16* [8, 24]	365 (70)	56 [50, 63]	19* [10, 28]
placebo (308)	308 (52)	336 (63)	28 [22, 33]		347 (65)	37 [31, 43]	

* doses that were statistically significantly superior ($p < 0.05$) to placebo after controlling for multiple comparisons.
CL = confidence limit; LPS = latency to persistent sleep; LSM = least squares mean; PSG = polysomnography; SD = standard deviation; sTST = subjective total sleep time; WASO = wake after sleep onset.

The effects of QUVIVIQ on LPS, WASO, and sTST were observed at Month 1 and were maintained through Month 3. The change from baseline of sTST by week in Study 1 is presented in Figure 4.

Figure 4 Change from Baseline of sTST by Week (Study 1)



14.2 Special Safety Studies

Effects on Driving

A randomized, double-blind, placebo- and active-controlled, four-period crossover study evaluated the effects of nighttime administration of QUVIVIQ on next-morning driving performance, using a driving simulator, 9 hours after dosing in 30 healthy elderly subjects (65–79 years, median age 70 years; 15 men, 15 women) and 30 healthy adult subjects (50–64 years, median age 58 years; 15 men, 15 women). The primary driving performance outcome measure was change in Standard Deviation of Lateral Position (SDLP). Testing was conducted after one night (initial dosing) and after four consecutive nights of treatment with QUVIVIQ 50 mg and 100 mg (two times the maximum recommended daily dose). Zopiclone 7.5 mg was used as an active comparator. For both doses, QUVIVIQ caused a statistically significant impairment in next-morning driving performance in adult or elderly subjects (compared with placebo) after the first dose. Although the mean effect on driving performance was not statistically significant (compared to placebo) after 4 consecutive nights of treatment with either dose of QUVIVIQ, driving ability was impaired in some subjects taking QUVIVIQ.

Patients should be cautioned about the potential for next-morning driving impairment because there is individual variation in sensitivity to QUVIVIQ.

Withdrawal of Therapy

Withdrawal Symptoms

In controlled efficacy and safety studies, withdrawal effects were assessed by the Tyrer Benzodiazepine Withdrawal Symptom Questionnaire following discontinuation of QUVIVIQ, and by adverse event reporting during a single-blind placebo run-out period. No evidence of withdrawal symptoms was observed upon treatment discontinuation.

Loss of Treatment Effect After Discontinuation

The loss of effect from stopping treatment with QUVIVIQ was assessed during the placebo run-out period after 3 months of treatment with QUVIVIQ in Study 1 and Study 2.

After treatment discontinuation, in Study 1, patients previously treated with QUVIVIQ 50 mg experienced mean increases of 25 minutes in WASO, 16 minutes in LPS during the next night of sleep, and a mean decrease in sTST of 14 minutes per night over the next week, as compared to the last assessment on treatment. Following QUVIVIQ 25 mg discontinuation, a similar pattern was observed with mean increases in WASO of 19 minutes, 15 minutes in LPS, and a mean decrease in sTST of 7 minutes. Similar changes were observed with the 25 mg dose in Study 2. In both studies, patients who were on placebo and continued on placebo in the run-out period experienced minimal changes in WASO, LPS, or sTST.

Middle of the Night Safety

The effect of QUVIVIQ on middle of the night safety was evaluated in a randomized, placebo-controlled three-period crossover study in 18 healthy adult (< 65 years) and 18 healthy elderly (≥ 65 years) subjects. The ability to awaken in response to a sound stimulus, postural stability, and memory

were assessed following a scheduled awakening 4 hours after administration of 25 or 50 mg QUVIVIQ, or placebo.

The ability to awaken to sound in the middle of the night was assessed using an audiometer that delivered 1000 Hz tones starting at 35 dB and increasing to 100 dB to determine the Auditory Awakening Threshold (AAT). There was no significant difference between QUVIVIQ (25 mg or 50 mg) and placebo in AAT.

Postural stability was measured by assessing body sway using a body sway meter approximately 5 minutes after awakening. Evening dosing of QUVIVIQ 25 mg and 50 mg resulted in respective increases in mean (95% confidence limit) cumulative body sway over 2 minutes of 37 mm [2 mm, 71 mm] and 66 mm [31 mm, 100 mm] at 4 hours post-dose compared to placebo.

A visual verbal learning test (VVLT) of immediate and delayed recall was administered to assess memory after middle of the night awakening (4 hours post-dose) in subjects receiving QUVIVIQ 25 mg or 50 mg. QUVIVIQ was associated with worse performance on the VVLT compared to placebo.

16 HOW SUPPLIED/STORAGE AND HANDLING

16.1 How Supplied

QUVIVIQ tablets are available as:

- 25 mg, light purple, arc-triangle shaped film-coated tablets debossed with “25” on one side, and “i” on the other side.
NDC 80491-7825-3, bottle of 30 with child-resistant closure
- 50 mg: light orange, arc-triangle shaped film-coated tablets debossed with “50” on one side, and “i” on the other side.
NDC 80491-7850-3, bottle of 30 with child-resistant closure

16.2 Storage and Handling

Store at 20°C to 25°C (68°F to 77°F), excursions permitted between 15°C and 30°C (59°F and 86°F) [see USP Controlled Room Temperature].

17 PATIENT COUNSELING INFORMATION

Advise the patient to read the FDA-approved patient labeling (Medication Guide).

Administration Instructions

Advise patients to take QUVIVIQ only in the evening within 30 minutes before going to bed and only if they can stay in bed for a full night (at least 7 hours) before being active again [see *Dosage and Administration (2.1)*].

Advise patients that the effect of QUVIVIQ may be delayed if taken with or soon after a meal [see *Dosage and Administration (2.1)*, *Clinical Pharmacology (12.3)*].

CNS-Depressant Effects and Daytime Impairment

Advise patients that QUVIVIQ can impair daytime wakefulness even when used as prescribed. The risk of daytime impairment is increased if QUVIVIQ is taken with less than a full night of sleep remaining or if a higher than recommended dose is taken. If QUVIVIQ is taken in these circumstances, caution patients against driving and other activities requiring complete mental alertness. Advise patients that increased drowsiness may increase the risk of falls in some patients [see *Warnings and Precautions (5.1), Clinical Studies (14.2)*].

Worsening of Depression/Suicidal Ideation

Tell patients to report any worsening of depression or suicidal thoughts immediately [see *Warnings and Precautions (5.2)*].

Sleep Paralysis, Hypnagogic/Hypnopompic Hallucinations, and Cataplexy-Like Symptoms

Advise patients and their families that QUVIVIQ may cause sleep paralysis, which is an inability to move or speak for several minutes during sleep-wake transitions and hypnagogic/hypnopompic hallucinations, including vivid and disturbing perceptions. Symptoms similar to mild cataplexy have occurred with orexin receptor antagonists [see *Warnings and Precautions (5.3)*].

Complex Sleep Behaviors

Instruct patients and their families that hypnotics may cause complex sleep behaviors, including sleepwalking, sleep driving, preparing and eating food, making phone calls, or having sex while not being fully awake. Tell patients to discontinue QUVIVIQ and notify their healthcare provider immediately if they develop any of these symptoms [see *Warnings and Precautions (5.4)*].

Concomitant Medications

Ask patients about alcohol consumption, medicines they are taking, and drugs they may be taking without a prescription. Advise patients to avoid consuming alcohol with QUVIVIQ [see *Warnings and Precautions (5.1), Drug Interactions (7.1), Clinical Pharmacology (12.2)*].

Pregnancy

Advise patients that there is a pregnancy exposure registry that monitors pregnancy outcomes in women exposed to QUVIVIQ during pregnancy [see *Use in Specific Populations (8.1)*].

Tolerance, Abuse, and Dependence

Tell patients not to increase the dose of QUVIVIQ on their own, and to inform you if they believe the drug “does not work” [see *Drug Abuse and Dependence (9)*].

Distributed by:

Idorsia Pharmaceuticals US Inc.
One Radnor Corporate Center, Suite 101

100 Matsonford Rd
Radnor, PA 19087

IDRSQUPI09302024

Patent: www.idorsia.com/patents

MEDICATION GUIDE
QUVIVIQ® (cue-VIH-vick)
(daridorexant)
tablets, for oral use, CIV

What is the most important information I should know about QUVIVIQ?

QUVIVIQ may cause serious side effects, including:

- **Decreased awareness and alertness.** The morning after you take QUVIVIQ, your ability to drive safely and think clearly may be decreased. You may also have sleepiness during the day. Sleepiness may increase your risk for falls.
 - Do not take more QUVIVIQ than prescribed.
 - Do not take QUVIVIQ unless you are able to stay in bed for a full night (at least 7 hours) before you must be active again.
 - Take QUVIVIQ in the evening within 30 minutes before going to bed.

See “**What are the possible side effects of QUVIVIQ?**” for more information about side effects.

What is QUVIVIQ?

- QUVIVIQ is a prescription medicine for adults who have trouble falling asleep or staying asleep (insomnia).
- It is not known if QUVIVIQ is safe and effective for use in children.

QUVIVIQ is a federally controlled substance (CIV) because it can be abused or lead to dependence. Keep QUVIVIQ in a safe place to prevent misuse and abuse. Selling or giving away QUVIVIQ may harm others and is against the law.

Who should not take QUVIVIQ?

Do not take QUVIVIQ:

- **If you fall asleep often at unexpected times (narcolepsy).**
- **If you are allergic to daridorexant, or any ingredients in QUVIVIQ.** See the end of this Medication Guide for a complete list of ingredients in QUVIVIQ.

Before taking QUVIVIQ, tell your healthcare provider about all of your medical conditions, including if you:

- have a history of depression, mental illness, or suicidal thoughts or actions
- have a history of drug or alcohol abuse or addiction
- have a history of a sudden onset of muscle weakness (cataplexy)
- have a history of daytime sleepiness
- have lung or breathing problems, including sleep apnea
- have liver problems
- are pregnant or plan to become pregnant. It is not known if QUVIVIQ can harm your unborn baby.
 - **Pregnancy Registry:** There is a pregnancy registry for women who are exposed to QUVIVIQ during pregnancy. The purpose of this registry is to collect information about the health of you and your baby. For more information or to participate in the registry, call 1-833-400-9611. Talk with your healthcare provider about the risk to your unborn baby if you take QUVIVIQ during pregnancy.
- are breastfeeding or plan to breastfeed. QUVIVIQ passes into your breast milk. Talk to your healthcare provider about the best way to feed your baby during treatment with QUVIVIQ.

Tell your healthcare provider about all of the medicines you take, including prescription and over-the-counter medicines, vitamins, and herbal supplements.

Taking QUVIVIQ with certain medicines can cause serious side effects. QUVIVIQ may affect the way other medicines work and other medicines may affect the way QUVIVIQ works.

Do not take QUVIVIQ with other medicines that can make you sleepy unless your healthcare provider tells you to.

Know the medicines you take. Keep a list of them to show your healthcare provider and pharmacist when you get a new medicine.

How should I take QUVIVIQ?

- Take QUVIVIQ exactly as your healthcare provider tells you to take it.
- Do not change your dose of QUVIVIQ without first talking to your healthcare provider.

- **Take QUVIVIQ one time each night**, within 30 minutes before going to bed.
- Only take QUVIVIQ when you can stay in bed for a full night (at least 7 hours).
- QUVIVIQ may take longer to work if you take it with or right after a meal.
- Call your healthcare provider if your insomnia (sleep problem) worsens or is not improved within 7 to 10 days. This may mean that there is another condition causing your sleep problem.
- If you take too much QUVIVIQ, call your healthcare provider, or contact your Poison Help Line at 1-800-222-1222, or go to the nearest hospital emergency room right away.

What should I avoid while taking QUVIVIQ?

- **Do not** drink alcohol while taking QUVIVIQ. It can increase the effects of alcohol, which can be dangerous.
- You may still feel drowsy the next day after taking QUVIVIQ.
 - **Do not** drive, operate heavy machinery, do anything dangerous, or do other activities that require clear thinking if you have taken QUVIVIQ as prescribed but do not feel fully awake, you have taken QUVIVIQ and have had less than a full night of sleep (at least 7 hours), or if you have taken more QUVIVIQ than prescribed by your healthcare provider.

What are the possible side effects of QUVIVIQ?

QUVIVIQ may cause serious side effects, including:

- **See** “What is the most important information I should know about QUVIVIQ?”
- **Worsening depression and suicidal thoughts.** Call your healthcare provider right away if you have any worsening depression or thoughts of suicide or dying.
- **Temporary inability to move or talk (sleep paralysis)** for up to several minutes, or hallucinations while you are going to sleep or waking up.
- **Temporary weakness in your legs that can happen during the day or at night.**
- **Complex sleep behaviors** such as sleepwalking, sleep driving, preparing and eating food, making phone calls, having sex, or doing other activities while not fully awake that you may not remember the next morning. Stop taking QUVIVIQ and call your healthcare provider right away if you experience a complex sleep behavior.

The most common side effects of QUVIVIQ include headache and sleepiness or tiredness.

These are not all of the possible side effects of QUVIVIQ.

Call your doctor for medical advice about side effects. You may report side effects to FDA at 1-800-FDA-1088.

How should I store QUVIVIQ?

- Store QUVIVIQ at room temperature between 68°F to 77°F (20°C to 25°C).
- **Keep QUVIVIQ and all medicines out of the reach of children.**

General information about the safe and effective use of QUVIVIQ.

Medicines are sometimes prescribed for purposes other than those listed in a Medication Guide. Do not use QUVIVIQ for a condition for which it was not prescribed. Do not give QUVIVIQ to other people, even if they have the same symptoms that you have. It may harm them. You can ask your pharmacist or healthcare provider for information about QUVIVIQ that is written for health professionals.

What are the ingredients in QUVIVIQ?

Active ingredient: daridorexant hydrochloride

Inactive ingredients: croscarmellose sodium, magnesium stearate, mannitol, microcrystalline cellulose, povidone, and silicon dioxide. The tablet film coating contains: glycerin, hypromellose, iron oxide black, iron oxide red, microcrystalline cellulose, talc, titanium dioxide, and, in the 50 mg tablet only, iron oxide yellow.

Distributed by:

Idorsia Pharmaceuticals US Inc.
One Radnor Corporate Center, Suite 101
100 Matsonford Rd
Radnor, PA 19087

For more information go to QUVIVIQ.com or call 1-833-400-9611.