

HIGHLIGHTS OF PRESCRIBING INFORMATION

These highlights do not include all the information needed to use PAXLOVID safely and effectively. See full prescribing information for PAXLOVID.

PAXLOVID™ (nirmatrelvir tablets; ritonavir tablets), co-packaged for oral use
Initial U.S. Approval: 2023

WARNING: SIGNIFICANT DRUG INTERACTIONS WITH PAXLOVID

See full prescribing information for complete boxed warning.

- PAXLOVID includes ritonavir, a strong CYP3A inhibitor, which may lead to greater exposure of certain concomitant medications, resulting in potentially severe, life-threatening, or fatal events. (4, 5.1, 7)
- Prior to prescribing PAXLOVID: 1) Review all medications taken by the patient to assess potential drug-drug interactions with a strong CYP3A inhibitor like PAXLOVID and 2) Determine if concomitant medications require a dose adjustment, interruption, and/or additional monitoring. (7)
- Consider the benefit of PAXLOVID treatment in reducing hospitalization and death, and whether the risk of potential drug-drug interactions for an individual patient can be appropriately managed. (5.1, 7, 14)

RECENT MAJOR CHANGES

Contraindications (4) 02/2026

INDICATIONS AND USAGE

PAXLOVID which includes nirmatrelvir, a severe acute respiratory syndrome coronavirus 2 (SARS-CoV-2) main protease (M^{pro}; also referred to as 3CL^{pro} or nsp5 protease) inhibitor, and ritonavir, an HIV-1 protease inhibitor and CYP3A inhibitor, is indicated for the treatment of mild-to-moderate coronavirus disease 2019 (COVID-19) in adults who are at high risk for progression to severe COVID-19, including hospitalization or death. (1)

Limitations of Use

PAXLOVID is not approved for use as pre-exposure or post-exposure prophylaxis for prevention of COVID-19. (1)

DOSAGE AND ADMINISTRATION

PAXLOVID is nirmatrelvir tablets co-packaged with ritonavir tablets. (2.1)
Nirmatrelvir must be co-administered with ritonavir. (2.1)

- Initiate PAXLOVID treatment as soon as possible after diagnosis of COVID-19 and within 5 days of symptom onset. (2.1)
- Administer orally with or without food. (2.1)
- Administer at approximately the same time each day. (2.2, 2.3)
- Dosage: 300 mg nirmatrelvir (two 150 mg tablets) with 100 mg ritonavir (one 100 mg tablet), with all 3 tablets taken together twice daily for 5 days. (2.2)
- Dose Reduction for Renal Impairment (2.3, 8.6, 12.3)

Renal Function	Days of Treatment	Dose and Dose Frequency ^a
Moderate renal impairment (eGFR \geq 30 to $<$ 60 mL/min)	Days 1-5	150 mg nirmatrelvir (one 150 mg tablet) with 100 mg ritonavir (one 100 mg tablet) twice daily
Severe renal impairment (eGFR $<$ 30 mL/min) including those requiring hemodialysis ^b	Day 1	300 mg nirmatrelvir (two 150 mg tablets) with 100 mg ritonavir (one 100 mg tablet) once
	Days 2-5	150 mg nirmatrelvir (one 150 mg tablet) with 100 mg ritonavir (one 100 mg tablet) once daily

Abbreviation: eGFR=estimated glomerular filtration rate.

a. PAXLOVID should be administered at approximately the same time each day for 5 days.

b. On days of hemodialysis, the PAXLOVID dose should be administered after hemodialysis.

- PAXLOVID is not recommend in patients with severe hepatic impairment (Child-Pugh Class C). (2.4, 8.7)

DOSAGE FORMS AND STRENGTHS

- Tablets: nirmatrelvir 150 mg (3)
- Tablets: ritonavir 100 mg (3)

CONTRAINDICATIONS

- History of clinically significant hypersensitivity reactions to the active ingredients (nirmatrelvir or ritonavir) or any other components. (4)
- Co-administration with drugs highly dependent on CYP3A for clearance and for which elevated concentrations are associated with serious and/or life-threatening reactions. (4, 7.3)
- Co-administration with potent CYP3A inducers where significantly reduced nirmatrelvir or ritonavir plasma concentrations may be associated with the potential for loss of virologic response and possible resistance. (4, 7.3)

WARNINGS AND PRECAUTIONS

- The concomitant use of PAXLOVID and certain other drugs may result in potentially significant drug interactions. Consult the Full Prescribing Information prior to and during treatment for potential drug interactions. (5.1, 7)
- Hypersensitivity Reactions: Anaphylaxis, serious skin reactions (including toxic epidermal necrolysis and Stevens-Johnson syndrome), and other hypersensitivity reactions have been reported with PAXLOVID. If signs and symptoms of a clinically significant hypersensitivity reaction or anaphylaxis occur, immediately discontinue PAXLOVID and initiate appropriate medications and/or supportive care. (5.2)
- Hepatotoxicity: Hepatic transaminase elevations, clinical hepatitis, and jaundice have occurred in patients receiving ritonavir. (5.3)
- HIV-1 Drug Resistance: PAXLOVID use may lead to a risk of HIV-1 developing resistance to HIV protease inhibitors in individuals with uncontrolled or undiagnosed HIV-1 infection. (5.4)

ADVERSE REACTIONS

Most common adverse reactions (incidence \geq 1% and greater incidence than in the placebo group) are dysgeusia and diarrhea. (6.1)

To report SUSPECTED ADVERSE REACTIONS, contact Pfizer Inc. at 1-800-438-1985 or FDA at 1-800-FDA-1088 or www.fda.gov/medwatch.

DRUG INTERACTIONS

Co-administration of PAXLOVID can alter the plasma concentrations of other drugs and other drugs may alter the plasma concentrations of PAXLOVID. Consider the potential for drug interactions prior to and during PAXLOVID therapy and review concomitant medications during PAXLOVID therapy. (4, 5.1, 7, 12.3)

See 17 for PATIENT COUNSELING INFORMATION and FDA-approved patient labeling.

Revised: 02/2026

FULL PRESCRIBING INFORMATION: CONTENTS***WARNING: SIGNIFICANT DRUG INTERACTIONS WITH PAXLOVID****1 INDICATIONS AND USAGE****2 DOSAGE AND ADMINISTRATION**

- 2.1 Important Dosage and Administration Information
- 2.2 Recommended Dosage
- 2.3 Dosage in Patients with Renal Impairment
- 2.4 Use in Patients with Hepatic Impairment

3 DOSAGE FORMS AND STRENGTHS**4 CONTRAINDICATIONS****5 WARNINGS AND PRECAUTIONS**

- 5.1 Risk of Serious Adverse Reactions Due to Drug Interactions
- 5.2 Hypersensitivity Reactions
- 5.3 Hepatotoxicity
- 5.4 Risk of HIV-1 Resistance Development

6 ADVERSE REACTIONS

- 6.1 Clinical Trials Experience

7 DRUG INTERACTIONS

- 7.1 Potential for PAXLOVID to Affect Other Drugs
- 7.2 Potential for Other Drugs to Affect PAXLOVID
- 7.3 Established and Other Potentially Significant Drug Interactions

8 USE IN SPECIFIC POPULATIONS

- 8.1 Pregnancy
- 8.2 Lactation
- 8.3 Females and Males of Reproductive Potential

- 8.4 Pediatric Use
- 8.5 Geriatric Use
- 8.6 Renal Impairment
- 8.7 Hepatic Impairment

10 OVERDOSAGE**11 DESCRIPTION****12 CLINICAL PHARMACOLOGY**

- 12.1 Mechanism of Action
- 12.2 Pharmacodynamics
- 12.3 Pharmacokinetics
- 12.4 Microbiology

13 NONCLINICAL TOXICOLOGY

- 13.1 Carcinogenesis, Mutagenesis, Impairment of Fertility

14 CLINICAL STUDIES

- 14.1 Efficacy in Subjects at High Risk of Progression to Severe COVID-19 (EPIC-HR)
- 14.2 Trial in Unvaccinated Subjects Without a Risk Factor for Progression to Severe COVID-19 or Subjects Fully Vaccinated Against COVID-19 With at Least One Factor for Progression to Severe COVID-19 (EPIC-SR)
- 14.3 Post-Exposure Prophylaxis Trial

16 HOW SUPPLIED/STORAGE AND HANDLING**17 PATIENT COUNSELING INFORMATION**

* Sections or subsections omitted from the full prescribing information are not listed.

FULL PRESCRIBING INFORMATION

WARNING: SIGNIFICANT DRUG INTERACTIONS WITH PAXLOVID

- PAXLOVID includes ritonavir, a strong CYP3A inhibitor, which may lead to greater exposure of certain concomitant medications, resulting in potentially severe, life-threatening, or fatal events [see *Contraindications (4), Warnings and Precautions (5.1), and Drug Interactions (7)*].
- Prior to prescribing PAXLOVID: 1) Review all medications taken by the patient to assess potential drug-drug interactions with a strong CYP3A inhibitor like PAXLOVID and 2) Determine if concomitant medications require a dose adjustment, interruption, and/or additional monitoring [see *Drug Interactions (7)*].
- Consider the benefit of PAXLOVID treatment in reducing hospitalization and death, and whether the risk of potential drug-drug interactions for an individual patient can be appropriately managed [see *Warnings and Precautions (5.1), Drug Interactions (7), and Clinical Studies (14)*].

1 INDICATIONS AND USAGE

PAXLOVID is indicated for the treatment of mild-to-moderate coronavirus disease 2019 (COVID-19) in adults who are at high risk for progression to severe COVID-19, including hospitalization or death.

Limitations of Use

PAXLOVID is not approved for use as pre-exposure or post-exposure prophylaxis for prevention of COVID-19 [see *Clinical Studies (14.3)*].

2 DOSAGE AND ADMINISTRATION

2.1 Important Dosage and Administration Information

PAXLOVID is nirmatrelvir tablets co-packaged with ritonavir tablets. There are three different dose packs available:

- PAXLOVID (nirmatrelvir; ritonavir) co-packaged for oral use 300 mg;100 mg [see *Dosage and Administration (2.2)*].
- PAXLOVID (nirmatrelvir; ritonavir) co-packaged for oral use 150 mg;100 mg for patients with moderate renal impairment [see *Dosage and Administration (2.3)*].
- PAXLOVID (nirmatrelvir; ritonavir) co-packaged for oral use 300 mg;100 mg (Day 1) and 150 mg;100 mg (Days 2-5) for patients with severe renal impairment [see *Dosage and Administration (2.3)*].

Nirmatrelvir must be co-administered with ritonavir. Failure to correctly co-administer nirmatrelvir with ritonavir may result in plasma levels of nirmatrelvir that are insufficient to achieve the desired therapeutic effect.

Prescriptions should specify the numeric dose of each active ingredient within PAXLOVID [see Dosage and Administration (2.2, 2.3)]. Completion of the full 5-day treatment course and continued isolation in accordance

with public health recommendations are important to maximize viral clearance and minimize transmission of SARS-CoV-2.

The 5-day treatment course of PAXLOVID should be initiated as soon as possible after a diagnosis of COVID-19 has been made, and within 5 days of symptom onset even if baseline COVID-19 symptoms are mild. Should a patient require hospitalization due to severe or critical COVID-19 after starting treatment with PAXLOVID, the patient should complete the full 5-day treatment course per the healthcare provider's discretion.

If the patient misses a dose of PAXLOVID within 8 hours of the time it is usually taken, the patient should take it as soon as possible and resume the normal dosing schedule. If the patient misses a dose by more than 8 hours, the patient should not take the missed dose and instead take the next dose at the regularly scheduled time. The patient should not double the dose to make up for a missed dose.

PAXLOVID (both nirmatrelvir and ritonavir tablets) can be taken with or without food [*see Clinical Pharmacology (12.3)*]. The tablets should be swallowed whole and not chewed, broken, or crushed.

2.2 Recommended Dosage

The recommended dosage for PAXLOVID is 300 mg nirmatrelvir (two 150 mg tablets) with 100 mg ritonavir (one 100 mg tablet) with all 3 tablets taken together orally twice daily in the morning and at bedtime for 5 days.

2.3 Dosage in Patients with Renal Impairment

Prescriptions should specify the numeric dose of each active ingredient within PAXLOVID. Providers should counsel patients about renal dosing instructions [*see Patient Counseling Information (17)*].

No dosage adjustment is recommended in patients with mild renal impairment [estimated glomerular filtration rate (eGFR) ≥ 60 to < 90 mL/min].

In patients with moderate renal impairment (eGFR ≥ 30 to < 60 mL/min) or with severe renal impairment (eGFR < 30 mL/min) including those requiring hemodialysis, the dosage of PAXLOVID should be reduced as shown in Table 1. PAXLOVID should be administered at approximately the same time each day for 5 days. On days patients with severe renal impairment undergo hemodialysis, the PAXLOVID dose should be administered after hemodialysis [*see Use in Specific Populations (8.6), Clinical Pharmacology (12.3), and How Supplied/Storage and Handling (16)*].

Table 1: Recommended Dose and Regimen for Patients with Renal Impairment

Renal Function	Days of Treatment	Dose and Dose Frequency^a
Moderate renal impairment (eGFR \geq 30 to $<$ 60 mL/min)	Days 1-5	150 mg nirmatrelvir (one 150 mg tablet) with 100 mg ritonavir (one 100 mg tablet) twice daily
Severe renal impairment (eGFR $<$ 30 mL/min) including those requiring hemodialysis ^b	Day 1	300 mg nirmatrelvir (two 150 mg tablets) with 100 mg ritonavir (one 100 mg tablet) once
	Days 2-5	150 mg nirmatrelvir (one 150 mg tablet) with 100 mg ritonavir (one 100 mg tablet) once daily

Abbreviation: eGFR=estimated glomerular filtration rate.

a. PAXLOVID should be administered at approximately the same time each day for 5 days.

b. On days of hemodialysis, the PAXLOVID dose should be administered after hemodialysis.

2.4 Use in Patients with Hepatic Impairment

No dosage adjustment is needed in patients with mild (Child-Pugh Class A) or moderate (Child-Pugh Class B) hepatic impairment.

No pharmacokinetic or safety data are available regarding the use of nirmatrelvir or ritonavir in subjects with severe (Child-Pugh Class C) hepatic impairment; therefore, PAXLOVID is not recommended for use in patients with severe hepatic impairment [*see Use in Specific Populations (8.7)*].

3 DOSAGE FORMS AND STRENGTHS

PAXLOVID is nirmatrelvir tablets co-packaged with ritonavir tablets [*see How Supplied/Storage and Handling (16)*].

- Nirmatrelvir is supplied as oval, pink immediate-release, film-coated tablets debossed with “PFE” on one side and “3CL” on the other side. Each tablet contains 150 mg of nirmatrelvir.
- Ritonavir is supplied as white or white to off-white film-coated tablets uniquely identified by the color, shape, and debossing. Each tablet contains 100 mg of ritonavir.

4 CONTRAINDICATIONS

PAXLOVID is contraindicated in patients with a history of clinically significant hypersensitivity reactions [e.g., toxic epidermal necrolysis (TEN) or Stevens-Johnson syndrome] to its active ingredients (nirmatrelvir or ritonavir) or any other components of the product.

PAXLOVID is contraindicated with drugs that are primarily metabolized by CYP3A and for which elevated concentrations are associated with serious and/or life-threatening reactions and drugs that are strong CYP3A inducers where significantly reduced nirmatrelvir or ritonavir plasma concentrations may be associated with the potential for loss of virologic response and possible resistance. There are certain other drugs for which concomitant use with PAXLOVID should be avoided and/or dose adjustment, interruption, or therapeutic monitoring is recommended. Drugs listed in this section are a guide and not considered a comprehensive list of

all drugs that may be contraindicated with PAXLOVID. The healthcare provider should consult other appropriate resources such as the prescribing information for the interacting drug for comprehensive information on dosing or monitoring with concomitant use of a strong CYP3A inhibitor like PAXLOVID [see *Drug Interactions (7.3)*]:

- Drugs that are primarily metabolized by CYP3A for which elevated concentrations are associated with serious and/or life-threatening reactions [see *Drug Interactions (7.3)*]:
 - Alpha 1-adrenoreceptor antagonist: alfuzosin
 - Antianginal: ranolazine
 - Antiarrhythmic: amiodarone, dronedarone, flecainide, propafenone, quinidine
 - Anti-gout: colchicine (in patients with renal and/or hepatic impairment [see *Table 2, Drug Interactions (7.3)*])
 - Antipsychotics: lurasidone, pimozide
 - Benign prostatic hyperplasia agents: silodosin
 - Cardiovascular agents: eplerenone, ivabradine
 - Ergot derivatives: dihydroergotamine, ergotamine, methylergonovine
 - HMG-CoA reductase inhibitors: lovastatin, simvastatin (these drugs can be temporarily discontinued to allow PAXLOVID use [see *Table 2, Drug Interactions (7.3)*])
 - Immunosuppressants: voclosporin
 - Microsomal triglyceride transfer protein inhibitor: lomitapide
 - Migraine medications: eletriptan, ubrogepant
 - Mineralocorticoid receptor antagonists: finerenone
 - Non-opioid analgesic (selective blocker of Nav1.8 sodium channels): suzetrigine
 - Opioid antagonists: naloxegol
 - PDE5 inhibitor: sildenafil (Revatio®) when used for pulmonary arterial hypertension (PAH)
 - Sedative/hypnotics: triazolam, oral midazolam
 - Serotonin receptor 1A agonist/serotonin receptor 2A antagonist: flibanserin
 - Vasopressin receptor antagonists: tolvaptan

- Drugs that are strong CYP3A inducers where significantly reduced nirmatrelvir or ritonavir plasma concentrations may be associated with the potential for loss of virologic response and possible resistance. PAXLOVID cannot be started immediately after discontinuation of any of the following medications due to the delayed offset of the recently discontinued CYP3A inducer [see *Drug Interactions (7.3)*]:
 - Anticancer drugs: apalutamide, enzalutamide
 - Anticonvulsant: carbamazepine, phenobarbital, primidone, phenytoin
 - Antimycobacterials: rifampin, rifapentine
 - Cystic fibrosis transmembrane conductance regulator potentiators: lumacaftor/ivacaftor
 - Herbal products: St. John's Wort (*hypericum perforatum*)

5 WARNINGS AND PRECAUTIONS

5.1 Risk of Serious Adverse Reactions Due to Drug Interactions

Initiation of PAXLOVID, which contains ritonavir, a strong CYP3A inhibitor, in patients receiving medications metabolized by CYP3A or initiation of medications metabolized by CYP3A in patients already receiving

PAXLOVID, may increase plasma concentrations of medications metabolized by CYP3A. Medications that induce CYP3A may decrease concentrations of PAXLOVID. These interactions may lead to:

- Clinically significant adverse reactions, potentially leading to severe, life-threatening, or fatal events from greater exposures of concomitant medications.
- Loss of therapeutic effect of PAXLOVID and possible development of viral resistance.

Severe, life-threatening, and/or fatal adverse reactions due to drug interactions have been reported in patients treated with PAXLOVID. The most commonly reported concomitant medications resulting in serious adverse reactions were calcineurin inhibitors (e.g., tacrolimus, cyclosporine), followed by calcium channel blockers.

Prior to prescribing PAXLOVID, review all medications taken by the patient to assess potential drug-drug interactions and determine if concomitant medications require a dose adjustment, interruption, and/or additional monitoring (e.g., calcineurin inhibitors) [see *Contraindications (4) and Drug Interactions (7)*]. See Table 2 for clinically significant drug interactions, including contraindicated drugs. Drugs listed in Table 2 are a guide and not considered a comprehensive list of all possible drugs that may interact with PAXLOVID.

Consider the benefit of PAXLOVID treatment in reducing hospitalization and death, and whether the risk of potential drug-drug interactions for an individual patient can be appropriately managed [see *Drug Interactions (7) and Clinical Studies (14)*].

5.2 Hypersensitivity Reactions

Anaphylaxis, serious skin reactions (including toxic epidermal necrolysis and Stevens-Johnson syndrome), and other hypersensitivity reactions have been reported with PAXLOVID [see *Adverse Reactions (6.1)*]. If signs and symptoms of a clinically significant hypersensitivity reaction or anaphylaxis occur, immediately discontinue PAXLOVID and initiate appropriate medications and/or supportive care.

5.3 Hepatotoxicity

Hepatic transaminase elevations, clinical hepatitis, and jaundice have occurred in patients receiving ritonavir. Therefore, caution should be exercised when administering PAXLOVID to patients with pre-existing liver diseases, liver enzyme abnormalities, or hepatitis.

5.4 Risk of HIV-1 Resistance Development

Because nirmatrelvir is co-administered with ritonavir, there may be a risk of HIV-1 developing resistance to HIV protease inhibitors in individuals with uncontrolled or undiagnosed HIV-1 infection [see *Contraindications (4) and Drug Interactions (7)*].

6 ADVERSE REACTIONS

The following clinically significant adverse reactions are described elsewhere in the labeling:

- Hypersensitivity reactions [see *Warnings and Precautions (5.2)*]

6.1 Clinical Trials Experience

Because clinical trials are conducted under widely varying conditions, adverse reaction rates observed in the clinical trials of a drug cannot be directly compared to rates in the clinical trials of another drug and may not reflect the rates observed in practice.

The safety of PAXLOVID is based on two Phase 2/3 randomized, placebo-controlled trials in symptomatic adult subjects 18 years of age and older with a laboratory confirmed diagnosis of SARS-CoV-2 infection. Subjects in both studies received PAXLOVID (nirmatrelvir/ritonavir 300 mg/100 mg) or placebo every 12 hours for 5 days for the treatment of mild-to-moderate COVID-19 within 5 days of symptom onset [*see Clinical Studies (14)*]:

- Trial C4671005 (EPIC-HR) enrolled subjects who were at high risk for progression to severe disease.
- Trial C4671002 (EPIC-SR) enrolled subjects who were at standard risk for progression to severe disease (previously unvaccinated subjects at standard risk or fully vaccinated subjects with at least 1 risk factor for progression to severe disease).

Adverse reactions were those reported while subjects were on study medication and through 28 days after the last dose of study treatment.

In Trial C4671005 (EPIC-HR), 1,038 subjects received PAXLOVID and 1,053 subjects received placebo. The most common adverse reactions ($\geq 1\%$ incidence in the PAXLOVID group and occurring at a greater frequency than in the placebo group) were dysgeusia (5% and $<1\%$, respectively) and diarrhea (3% and 2%, respectively).

Among vaccinated or unvaccinated subjects at standard risk or fully vaccinated subjects with at least 1 risk factor for progression to severe disease in Trial C4671002 (EPIC-SR), 540 subjects received PAXLOVID and 528 subjects received placebo. The adverse reactions observed were consistent with those observed in EPIC-HR.

Trial C4671028 (EPIC-SRI) was a Phase 1, open-label trial that evaluated the effects of severe renal impairment on the pharmacokinetics, safety, and tolerability of PAXLOVID in non-hospitalized adult participants with COVID-19 and severe renal impairment. A total of 15 subjects with severe renal impairment were enrolled in this trial, with 12 subjects receiving intermittent hemodialysis and 3 subjects not on hemodialysis. Subjects received nirmatrelvir/ritonavir 300 mg/100 mg once on Day 1 followed by nirmatrelvir/ritonavir 150 mg/100 mg once daily from Days 2-5. The safety profile of PAXLOVID in subjects with severe renal impairment, including those requiring hemodialysis, was consistent with the safety profile observed in the Phase 2/3 randomized, placebo-controlled trials.

Emergency Use Authorization Experience in Subjects with COVID-19

The following adverse reactions have been identified during use of PAXLOVID under Emergency Use Authorization.

Immune System Disorders: Anaphylaxis, hypersensitivity reactions [*see Warnings and Precautions (5.2)*]

Skin and Subcutaneous Tissue Disorders: Toxic epidermal necrolysis, Stevens-Johnson syndrome [*see Warnings and Precautions (5.2)*]

Nervous System Disorders: Headache

Vascular Disorders: Hypertension

Gastrointestinal Disorders: Abdominal pain, nausea, vomiting

General Disorders and Administration Site Conditions: Malaise

7 DRUG INTERACTIONS

7.1 Potential for PAXLOVID to Affect Other Drugs

PAXLOVID (nirmatrelvir co-packaged with ritonavir) is a strong inhibitor of CYP3A, and an inhibitor of CYP2D6, P-gp and OATP1B1. Co-administration of PAXLOVID with drugs that are primarily metabolized by CYP3A and CYP2D6 or are transported by P-gp or OATP1B1 may result in increased plasma concentrations of such drugs and increase the risk of adverse events. Co-administration of PAXLOVID with drugs highly dependent on CYP3A for clearance and for which elevated plasma concentrations are associated with serious and/or life-threatening events is contraindicated [see *Contraindications (4) and Drug Interactions (7.3) Table 2*]. Co-administration with other CYP3A substrates may require a dose adjustment or additional monitoring as shown in Table 2.

7.2 Potential for Other Drugs to Affect PAXLOVID

Nirmatrelvir and ritonavir are CYP3A substrates; therefore, drugs that induce CYP3A may decrease nirmatrelvir and ritonavir plasma concentrations and reduce PAXLOVID therapeutic effect [see *Contraindications (4) and Drug Interactions (7.3) Table 2*].

7.3 Established and Other Potentially Significant Drug Interactions

Table 2 provides a listing of clinically significant drug interactions, including contraindicated drugs [see *Contraindications (4) and Warnings and Precautions (5.1)*]. Drugs listed in Table 2 are a guide and not considered a comprehensive list of all possible drugs that may interact with PAXLOVID. The healthcare provider should consult other appropriate resources such as the prescribing information for the interacting drug for comprehensive information on dosing or monitoring with concomitant use of a strong CYP3A inhibitor such as ritonavir.

Table 2: Established and Other Potentially Significant Drug Interactions

Drug Class	Drugs within Class	Effect on Concentration	Clinical Comments
Alpha 1-adrenoreceptor antagonist	alfuzosin	↑ alfuzosin	Co-administration contraindicated due to potential hypotension [see <i>Contraindications (4)</i>].
Alpha 1-adrenoreceptor antagonist	tamsulosin	↑ tamsulosin	Avoid concomitant use with PAXLOVID.
Antianginal	ranolazine	↑ ranolazine	Co-administration contraindicated due to potential for serious and/or life-threatening reactions [see <i>Contraindications (4)</i>].
Antiarrhythmics	amiodarone, dronedarone, flecainide, propafenone, quinidine	↑ antiarrhythmic	Co-administration contraindicated due to potential for cardiac arrhythmias [see <i>Contraindications (4)</i>].
Antiarrhythmics	lidocaine (systemic), disopyramide	↑ antiarrhythmic	Caution is warranted and therapeutic concentration monitoring is recommended for antiarrhythmics if available.

Table 2: Established and Other Potentially Significant Drug Interactions

Drug Class	Drugs within Class	Effect on Concentration	Clinical Comments
Anticancer drugs	apalutamide, enzalutamide	↓ nirmatrelvir/ritonavir	Co-administration contraindicated due to potential loss of virologic response and possible resistance [see <i>Contraindications (4)</i>].
Anticancer drugs	abemaciclib, ceritinib, dasatinib, encorafenib, ibrutinib, ivosidenib, neratinib, nilotinib, venetoclax, vinblastine, vincristine	↑ anticancer drugs	Avoid co-administration of encorafenib or ivosidenib due to potential risk of serious adverse events such as QT interval prolongation. Avoid use of neratinib, venetoclax or ibrutinib. Co-administration of vincristine and vinblastine may lead to significant hematologic or gastrointestinal side effects. For further information, refer to the individual product prescribing information for anticancer drug.
Anticoagulants	warfarin	↑↓ warfarin	Closely monitor international normalized ratio (INR) if co-administration with warfarin is necessary.
	rivaroxaban	↑ rivaroxaban	Increased bleeding risk with rivaroxaban. Avoid concomitant use.
	dabigatran ^a	↑ dabigatran	Increased bleeding risk with dabigatran. Depending on dabigatran indication and renal function, reduce dose of dabigatran or avoid concomitant use. Refer to the dabigatran prescribing information for further information.
	apixaban	↑ apixaban	Combined P-gp and strong CYP3A inhibitors increase blood levels of apixaban and increase the risk of bleeding. Dosing recommendations for co-administration of apixaban with PAXLOVID depend on the apixaban dose. Refer to the apixaban prescribing information for more information.
Anticonvulsants	carbamazepine ^a , phenobarbital, primidone, phenytoin	↓ nirmatrelvir/ritonavir	Co-administration contraindicated due to potential loss of virologic response and possible resistance [see <i>Contraindications (4)</i>].
Anticonvulsants	clonazepam	↑ anticonvulsant	A dose decrease may be needed for clonazepam when co-administered with PAXLOVID and clinical monitoring is recommended.

Table 2: Established and Other Potentially Significant Drug Interactions

Drug Class	Drugs within Class	Effect on Concentration	Clinical Comments
Antidepressants	bupropion trazodone	↓ bupropion and active metabolite hydroxy-bupropion ↑ trazodone	Monitor for an adequate clinical response to bupropion. Adverse reactions of nausea, dizziness, hypotension, and syncope have been observed following co-administration of trazodone and ritonavir. A lower dose of trazodone should be considered. Refer to the trazodone prescribing information for further information.
Antifungals	voriconazole ketoconazole, isavuconazonium sulfate, itraconazole ^a	↓ voriconazole ↑ ketoconazole ↑ isavuconazonium sulfate ↑ itraconazole ↑ nirmatrelvir/ritonavir	Avoid concomitant use of voriconazole. Refer to the ketoconazole, isavuconazonium sulfate, and itraconazole prescribing information for further information. A nirmatrelvir/ritonavir dose reduction is not needed.
Anti-gout	colchicine	↑ colchicine	Co-administration contraindicated due to potential for serious and/or life-threatening reactions in patients with renal and/or hepatic impairment [<i>see Contraindications (4)</i>].
Anti-HIV protease inhibitors	atazanavir, darunavir, tipranavir	↑ protease inhibitor	For further information, refer to the respective protease inhibitors' prescribing information. Patients on ritonavir- or cobicistat-containing HIV regimens should continue their treatment as indicated. Monitor for increased PAXLOVID or protease inhibitor adverse events.
Anti-HIV	efavirenz, maraviroc, nevirapine, zidovudine, bictegravir/emtricitabine/tenofovir	↑ efavirenz ↑ maraviroc ↑ nevirapine ↓ zidovudine ↑ bictegravir ↔ emtricitabine ↑ tenofovir	For further information, refer to the respective anti-HIV drugs prescribing information.
Anti-infective	clarithromycin, erythromycin	↑ clarithromycin ↑ erythromycin	Refer to the respective prescribing information for anti-infective dose adjustment.

Table 2: Established and Other Potentially Significant Drug Interactions

Drug Class	Drugs within Class	Effect on Concentration	Clinical Comments
Antimycobacterial	rifampin, rifapentine	↓ nirmatrelvir/ritonavir	Co-administration contraindicated due to potential loss of virologic response and possible resistance. Alternate antimycobacterial drugs such as rifabutin should be considered [see <i>Contraindications (4)</i>].
Antimycobacterial	bedaquiline	↑ bedaquiline	Refer to the bedaquiline prescribing information for further information.
	rifabutin	↑ rifabutin	Refer to the rifabutin prescribing information for further information on rifabutin dose reduction.
Antipsychotics	lurasidone, pimozide	↑ lurasidone ↑ pimozide	Co-administration contraindicated due to serious and/or life-threatening reactions such as cardiac arrhythmias [see <i>Contraindications (4)</i>].
Antipsychotics	quetiapine	↑ quetiapine	If co-administration is necessary, reduce quetiapine dose and monitor for quetiapine-associated adverse reactions. Refer to the quetiapine prescribing information for recommendations.
	clozapine	↑ clozapine	If co-administration is necessary, consider reducing the clozapine dose and monitor for adverse reactions.
Benign prostatic hyperplasia agents	silodosin	↑ silodosin	Co-administration contraindicated due to potential for postural hypotension [see <i>Contraindications (4)</i>].
Calcium channel blockers	amlodipine, diltiazem, felodipine, nicardipine, nifedipine, verapamil	↑ calcium channel blocker	Caution is warranted and clinical monitoring of patients is recommended. A dose decrease may be needed for these drugs when co-administered with PAXLOVID. If co-administered, refer to the individual product prescribing information for calcium channel blocker for further information.
Cardiac glycosides	digoxin	↑ digoxin	Caution should be exercised when co-administering PAXLOVID with digoxin, with appropriate monitoring of serum digoxin levels. Refer to the digoxin prescribing information for further information.

Table 2: Established and Other Potentially Significant Drug Interactions

Drug Class	Drugs within Class	Effect on Concentration	Clinical Comments
Cardiovascular agents	eplerenone	↑ eplerenone	Co-administration with eplerenone is contraindicated due to potential for hyperkalemia [see <i>Contraindications (4)</i>].
	ivabradine	↑ ivabradine	Co-administration with ivabradine is contraindicated due to potential for bradycardia or conduction disturbances [see <i>Contraindications (4)</i>].
Cardiovascular agents	aliskiren, ticagrelor, vorapaxar	↑ aliskiren ↑ ticagrelor ↑ vorapaxar	Avoid concomitant use with PAXLOVID.
	clopidogrel	↓ clopidogrel active metabolite	
	cilostazol	↑ cilostazol	Dosage adjustment of cilostazol is recommended. Refer to the cilostazol prescribing information for more information.
	mavacamten	↑ mavacamten	Co-administration with mavacamten may increase mavacamten plasma concentration and increase the risk of heart failure. Discontinue mavacamten for the duration of PAXLOVID treatment. Resumption of mavacamten within 5 days of completing PAXLOVID may result in higher exposure of mavacamten. Refer to the mavacamten prescribing information for more information.
Corticosteroids primarily metabolized by CYP3A	betamethasone, budesonide, ciclesonide, dexamethasone, fluticasone, methylprednisolone, mometasone, triamcinolone	↑ corticosteroid	Co-administration with corticosteroids (all routes of administration) of which exposures are significantly increased by strong CYP3A inhibitors can increase the risk for Cushing's syndrome and adrenal suppression. However, the risk of Cushing's syndrome and adrenal suppression associated with short-term use of a strong CYP3A inhibitor is low. Alternative corticosteroids including beclomethasone, prednisone, and prednisolone should be considered.
Cystic fibrosis transmembrane conductance regulator potentiators	lumacaftor/ivacaftor	↓ nirmatrelvir/ritonavir	Co-administration contraindicated due to potential loss of virologic response and possible resistance [see <i>Contraindications (4)</i>].

Table 2: Established and Other Potentially Significant Drug Interactions

Drug Class	Drugs within Class	Effect on Concentration	Clinical Comments
Cystic fibrosis transmembrane conductance regulator potentiators	ivacaftor	↑ ivacaftor	Reduce dosage when co-administered with PAXLOVID. Refer to the individual product prescribing information for more information.
	elexacaftor/tezacaftor/ivacaftor	↑ elexacaftor/tezacaftor/ivacaftor	
	tezacaftor/ivacaftor	↑ tezacaftor/ivacaftor	
Dipeptidyl peptidase 4 (DPP4) inhibitors	saxagliptin	↑ saxagliptin	Dosage adjustment of saxagliptin is recommended. Refer to the saxagliptin prescribing information for more information.
Endothelin receptor antagonists	bosentan	↑ bosentan ↓ nirmatrelvir/ritonavir	Discontinue use of bosentan at least 36 hours prior to initiation of PAXLOVID. Refer to the bosentan prescribing information for further information.
Ergot derivatives	dihydroergotamine, ergotamine, methylergonovine	↑ dihydroergotamine ↑ ergotamine ↑ methylergonovine	Co-administration contraindicated due to potential for acute ergot toxicity characterized by vasospasm and ischemia of the extremities and other tissues including the central nervous system [see <i>Contraindications (4)</i>].
Hepatitis C direct acting antivirals	elbasvir/grazoprevir	↑ antiviral	Increased grazoprevir concentrations can result in alanine transaminase (ALT) elevations.
	glecaprevir/pibrentasvir		Avoid concomitant use of glecaprevir/pibrentasvir with PAXLOVID.
	ombitasvir/paritaprevir/ritonavir and dasabuvir		Refer to the ombitasvir/paritaprevir/ritonavir and dasabuvir label for further information.
	sofosbuvir/velpatasvir/voxilaprevir		Refer to the sofosbuvir/velpatasvir/voxilaprevir prescribing information for further information. Patients on ritonavir-containing HCV regimens should continue their treatment as indicated. Monitor for increased PAXLOVID or HCV drug adverse events with concomitant use.
Herbal products	St. John's Wort (<i>hypericum perforatum</i>)	↓ nirmatrelvir/ritonavir	Co-administration contraindicated due to potential loss of virologic response and possible resistance [see <i>Contraindications (4)</i>].

Table 2: Established and Other Potentially Significant Drug Interactions

Drug Class	Drugs within Class	Effect on Concentration	Clinical Comments
HMG-CoA reductase inhibitors	lovastatin, simvastatin	↑ lovastatin ↑ simvastatin	Co-administration contraindicated due to potential for myopathy including rhabdomyolysis [<i>see Contraindications (4)</i>]. If treatment with PAXLOVID is considered medically necessary, discontinue use of lovastatin and simvastatin at least 12 hours prior to initiation of PAXLOVID, during the 5 days of PAXLOVID treatment, and for 5 days after completing PAXLOVID.
HMG-CoA reductase inhibitors	atorvastatin	↑ atorvastatin	Consider temporary discontinuation of atorvastatin during treatment with PAXLOVID. Atorvastatin does not need to be withheld prior to or after completing PAXLOVID.
Hormonal contraceptive	ethinyl estradiol	↓ ethinyl estradiol	An additional, non-hormonal method of contraception should be considered during the 5 days of PAXLOVID treatment and until one menstrual cycle after stopping PAXLOVID.
Immunosuppressants	voclosporin	↑ voclosporin	Co-administration contraindicated due to potential for acute and/or chronic nephrotoxicity [<i>see Contraindications (4)</i>].
Immunosuppressants	calcineurin inhibitors: cyclosporine, tacrolimus	↑ cyclosporine ↑ tacrolimus	Avoid concomitant use of calcineurin inhibitors with PAXLOVID when close monitoring of immunosuppressant concentrations is not feasible. If co-administered, dose adjustment of the immunosuppressant and close and regular monitoring for immunosuppressant concentrations and adverse reactions are recommended during and after treatment with PAXLOVID. Obtain expert consultation to appropriately manage the complexity of this co-administration [<i>see Warnings and Precautions (5.1)</i>].
	mTOR inhibitors: everolimus, sirolimus	↑ everolimus ↑ sirolimus	Avoid concomitant use of everolimus and sirolimus and PAXLOVID. Refer to the individual immunosuppressant prescribing information and latest guidelines for further information.

Table 2: Established and Other Potentially Significant Drug Interactions

Drug Class	Drugs within Class	Effect on Concentration	Clinical Comments
Janus kinase (JAK) inhibitors	tofacitinib	↑ tofacitinib	Dosage adjustment of tofacitinib is recommended. Refer to the tofacitinib prescribing information for more information.
	upadacitinib	↑ upadacitinib	Dosing recommendations for co-administration of upadacitinib with PAXLOVID depends on the upadacitinib indication. Refer to the upadacitinib prescribing information for more information.
Long-acting beta-adrenoceptor agonist	salmeterol	↑ salmeterol	Avoid concomitant use with PAXLOVID. The combination may result in increased risk of cardiovascular adverse events associated with salmeterol, including QT prolongation, palpitations, and sinus tachycardia.
Microsomal triglyceride transfer protein (MTTP) inhibitor	lomitapide	↑ lomitapide	Co-administration contraindicated due to potential for hepatotoxicity and gastrointestinal adverse reactions [<i>see Contraindications (4)</i>].
Migraine medications	eletriptan	↑ eletriptan	Co-administration of eletriptan within at least 72 hours of PAXLOVID is contraindicated due to potential for serious adverse reactions including cardiovascular and cerebrovascular events [<i>see Contraindications (4)</i>].
	ubrogepant	↑ ubrogepant	Co-administration of ubrogepant with PAXLOVID is contraindicated due to potential for serious adverse reactions [<i>see Contraindications (4)</i>].
Migraine medications	rimegepant	↑ rimegepant	Avoid concomitant use with PAXLOVID.
Mineralocorticoid receptor antagonists	finerenone	↑ finerenone	Co-administration contraindicated due to potential for serious adverse reactions including hyperkalemia, hypotension, and hyponatremia [<i>see Contraindications (4)</i>].
Muscarinic receptor antagonists	darifenacin	↑ darifenacin	The darifenacin daily-dose should not exceed 7.5 mg when co-administered with PAXLOVID. Refer to the darifenacin prescribing information for more information.

Table 2: Established and Other Potentially Significant Drug Interactions

Drug Class	Drugs within Class	Effect on Concentration	Clinical Comments
Narcotic analgesics	fentanyl, hydrocodone, oxycodone, meperidine	↑ fentanyl ↑ hydrocodone ↑ oxycodone ↑ meperidine	Careful monitoring of therapeutic and adverse effects (including potentially fatal respiratory depression) is recommended when fentanyl, hydrocodone, oxycodone, or meperidine is concomitantly administered with PAXLOVID. If concomitant use with PAXLOVID is necessary, consider a dosage reduction of the narcotic analgesic and monitor patients closely at frequent intervals. Refer to the individual product prescribing information for more information.
	methadone	↓ methadone	Monitor methadone-maintained patients closely for evidence of withdrawal effects and adjust the methadone dose accordingly.
Neuropsychiatric agents	suvorexant	↑ suvorexant	Avoid concomitant use of suvorexant with PAXLOVID.
	aripiprazole, brexpiprazole, cariprazine, iloperidone, lumateperone, pimavanserin	↑ aripiprazole ↑ brexpiprazole ↑ cariprazine ↑ iloperidone ↑ lumateperone ↑ pimavanserin	Dosage adjustment of aripiprazole, brexpiprazole, cariprazine, iloperidone, lumateperone, and pimavanserin is recommended. Refer to the individual product prescribing information for more information.
Non-opioid analgesic (selective blocker of Na _v 1.8 sodium channels)	suzetrigine	↑ suzetrigine and active metabolite M6-SUZ	Co-administration contraindicated due to potential for serious and/or life-threatening suzetrigine adverse reactions [see <i>Contraindications (4)</i>].
Opioid antagonists	naloxegol	↑ naloxegol	Co-administration contraindicated due to the potential for opioid withdrawal symptoms [see <i>Contraindications (4)</i>].
Pulmonary hypertension agents (PDE5 inhibitors)	sildenafil (Revatio [®])	↑ sildenafil	Co-administration of sildenafil with PAXLOVID is contraindicated for use in pulmonary hypertension due to the potential for sildenafil associated adverse events, including visual abnormalities hypotension, prolonged erection, and syncope [see <i>Contraindications (4)</i>].
Pulmonary hypertension agents (PDE5 inhibitors)	tadalafil (Adcirca [®])	↑ tadalafil	Avoid concomitant use of tadalafil with PAXLOVID for pulmonary hypertension.
Pulmonary hypertension agents (sGC stimulators)	riociguat	↑ riociguat	Dosage adjustment is recommended for riociguat when used for pulmonary hypertension. Refer to the riociguat prescribing information for more information.

Table 2: Established and Other Potentially Significant Drug Interactions

Drug Class	Drugs within Class	Effect on Concentration	Clinical Comments
Erectile dysfunction agents (PDE5 inhibitors)	avanafil	↑ avanafil	Do not use PAXLOVID with avanafil because a safe and effective avanafil dosage regimen has not been established.
	sildenafil, tadalafil, vardenafil	↑ sildenafil ↑ tadalafil ↑ vardenafil	Dosage adjustment is recommended for use of sildenafil, tadalafil or vardenafil with PAXLOVID when used for erectile dysfunction. Refer to the individual product prescribing information for more information.
Sedative/hypnotics	triazolam, oral midazolam ^a	↑ triazolam ↑ midazolam	Co-administration contraindicated due to potential for extreme sedation and respiratory depression [<i>see Contraindications (4)</i>].
Sedative/hypnotics	buspirone, clorazepate, diazepam, estazolam, flurazepam, zolpidem	↑ sedative/hypnotic	A dose decrease may be needed for these drugs when co-administered with PAXLOVID and monitoring for adverse events.
	midazolam (administered parenterally)	↑ midazolam	Co-administration of midazolam (parenteral) should be done in a setting which ensures close clinical monitoring and appropriate medical management in case of respiratory depression and/or prolonged sedation. Dosage reduction for midazolam should be considered, especially if more than a single dose of midazolam is administered. Refer to the midazolam prescribing information for further information.
Serotonin receptor 1A agonist/ serotonin receptor 2A antagonist	flibanserin	↑ flibanserin	Co-administration contraindicated due to potential for hypotension, syncope, and CNS depression [<i>see Contraindications (4)</i>].
Vasopressin receptor antagonists	tolvaptan	↑ tolvaptan	Co-administration contraindicated due to potential for dehydration, hypovolemia and hyperkalemia [<i>see Contraindications (4)</i>].

a. See Pharmacokinetics, Clinical Drug Interaction Studies (12.3).

8 USE IN SPECIFIC POPULATIONS

8.1 Pregnancy

Risk Summary

Available data on the use of nirmatrelvir during pregnancy are insufficient to evaluate for a drug-associated risk of major birth defects, miscarriage, or adverse maternal or fetal outcomes. Published observational studies on ritonavir use in pregnant women have not identified an increase in the risk of major birth defects. Published studies with ritonavir are insufficient to identify a drug associated risk of miscarriage (*see Data*). There are maternal and fetal risks associated with untreated COVID-19 in pregnancy (*see Clinical Considerations*).

In an embryo-fetal development study with nirmatrelvir, reduced fetal body weights following oral administration of nirmatrelvir to pregnant rabbits were observed at systemic exposures (AUC) approximately 11 times higher than clinical exposure at the approved human dose of PAXLOVID. No other adverse developmental outcomes were observed in animal reproduction studies with nirmatrelvir at systemic exposures (AUC) greater than or equal to 3 times higher than clinical exposure at the approved human dose of PAXLOVID (*see Data*).

In embryo-fetal developmental studies with ritonavir, no evidence of adverse developmental outcomes was observed following oral administration of ritonavir to pregnant rats and rabbits at systemic exposures (AUC) 5 (rat) or 8 (rabbits) times higher than clinical exposure at the approved human dose of PAXLOVID (*see Data*).

The estimated background risk of major birth defects and miscarriage for the indicated population is unknown. All pregnancies have a risk of birth defect, loss, or other adverse outcomes. In the U.S. general population, the estimated background risk of major birth defects and miscarriage in clinically recognized pregnancies is 2% to 4% and 15% to 20%, respectively.

Clinical Considerations

Disease-associated Maternal and/or Embryo-fetal Risk

COVID-19 in pregnancy is associated with adverse maternal and fetal outcomes, including preeclampsia, eclampsia, preterm birth, premature rupture of membranes, venous thromboembolic disease, and fetal death.

Data

Human Data

Ritonavir

Based on prospective reports to the antiretroviral pregnancy registry of live births following exposure to ritonavir-containing regimens (including over 3,500 live births exposed in the first-trimester and over 3,500 live births exposed in the second and third trimesters), there was no difference in the rate of overall birth defects for ritonavir compared with the background birth defect rate of 2.7% in the U.S. reference population of the Metropolitan Atlanta Congenital Defects Program (MACDP). The prevalence of birth defects in live births was 2.4% [95% confidence interval (CI): 1.9%, 2.9%] following first-trimester exposure to ritonavir-containing regimens and 2.9% (95% CI: 2.4%, 3.5%) following second and third trimester exposure to ritonavir-containing regimens. While placental transfer of ritonavir and fetal ritonavir concentrations are generally low, detectable levels have been observed in cord blood samples and neonate hair.

Animal Data

Nirmatrelvir

Embryo-fetal developmental (EFD) toxicity studies were conducted in pregnant rats and rabbits administered oral nirmatrelvir doses of up to 1,000 mg/kg/day during organogenesis [on Gestation Days (GD) 6 through 17 in rats and GD 7 through 19 in rabbits]. No biologically significant developmental effects were observed in the rat EFD study. At the highest dose of 1,000 mg/kg/day, the systemic nirmatrelvir exposure (AUC₂₄) in rats was approximately 9 times higher than clinical exposures at the approved human dose of PAXLOVID. In the rabbit EFD study, lower fetal body weights (9% decrease) were observed at 1,000 mg/kg/day in the absence of significant maternal toxicity findings. At 1,000 mg/kg/day, the systemic exposure (AUC₂₄) in rabbits was approximately 11 times higher than clinical exposures at the approved human dose of PAXLOVID. No other significant developmental toxicities (malformations and embryo-fetal lethality) were observed up to the highest dose tested, 1,000 mg/kg/day. No developmental effects were observed in rabbits at 300 mg/kg/day resulting in systemic exposure (AUC₂₄) approximately 3 times higher than clinical exposures at the approved human dose of PAXLOVID. A pre- and postnatal developmental (PPND) study in pregnant rats administered oral nirmatrelvir doses of up to 1,000 mg/kg/day from GD 6 through Lactation Day (LD) 20 showed no adverse findings. Although no difference in body weight was noted at birth when comparing offspring born to nirmatrelvir-treated versus control animals, a decrease in the body weight of offspring was observed on Postnatal Day (PND) 17 (8% decrease) and PND 21 (up to 7% decrease) in the absence of maternal toxicity. No significant differences in offspring body weight were observed from PND 28 to PND 56. The maternal systemic exposure (AUC₂₄) at 1,000 mg/kg/day was approximately 9 times higher than clinical exposures at the approved human dose of PAXLOVID. No body weight changes in the offspring were noted at 300 mg/kg/day, where maternal systemic exposure (AUC₂₄) was approximately 6 times higher than clinical exposures at the approved human dose of PAXLOVID.

Ritonavir

Ritonavir was administered orally to pregnant rats (at 0, 15, 35, and 75 mg/kg/day) and rabbits (at 0, 25, 50, and 110 mg/kg/day) during organogenesis (on GD 6 through 17 in rats and GD 6 through 19 in rabbits). No evidence of teratogenicity due to ritonavir was observed in rats and rabbits at systemic exposures (AUC) 5 (rats) or 8 (rabbits) times higher than exposure at the approved human dose of PAXLOVID. Increased incidences of early resorptions, ossification delays, and developmental variations, as well as decreased fetal body weights were observed in rats in the presence of maternal toxicity, at systemic exposures (AUC) approximately 10 times higher than exposure at the approved human dose of PAXLOVID. In rabbits, resorptions, decreased litter size, and decreased fetal weights were observed at maternally toxic doses, at systemic exposures greater than 8 times higher than exposure at the approved human dose of PAXLOVID. In a PPND study in rats, administration of 0, 15, 35, and 60 mg/kg/day ritonavir from GD 6 through PND 20 resulted in no developmental toxicity, at ritonavir systemic exposures greater than 10 times the exposure at the approved human dose of PAXLOVID.

8.2 Lactation

Risk Summary

Nirmatrelvir and ritonavir are present in human breast milk in small amounts (less than 2%). In a clinical lactation study in 8 lactating women, nirmatrelvir and ritonavir were estimated to be present in human milk at a mean weight-normalized infant daily dose of 0.16 mg/kg/day (1.8% of maternal weight-adjusted daily dose) and 0.006 mg/kg/day (0.2% of maternal weight-adjusted daily dose), respectively (*see Data*).

There are no available data on the effects of nirmatrelvir or ritonavir on the breastfed infant or on milk production. The developmental and health benefits of breastfeeding should be considered along with the

mother's clinical need for PAXLOVID and any potential adverse effects on the breastfed infant from PAXLOVID or from the underlying maternal condition. Breastfeeding individuals with COVID-19 should follow practices according to clinical guidelines to avoid exposing the infant to COVID-19.

Data

In a clinical pharmacokinetics study, 8 healthy lactating women who were at least 12 weeks postpartum were administered 3 oral doses every 12 hours (steady state dosing) of 300 mg/100 mg nirmatrelvir/ritonavir. The mean daily amount of nirmatrelvir and ritonavir recovered in breast milk was 0.752 mg and 0.027 mg, respectively, representing 0.13% and 0.014% of the corresponding administered daily maternal doses (unadjusted for weight). The estimated daily infant dose (assuming average milk consumption of 150 mL/kg/day), was 0.16 mg/kg/day and 0.006 mg/kg/day, 1.8% and 0.2% of the maternal dose, respectively, for nirmatrelvir and ritonavir.

8.3 Females and Males of Reproductive Potential

Contraception

Use of ritonavir may reduce the efficacy of combined hormonal contraceptives. Advise patients using combined hormonal contraceptives to use an effective alternative contraceptive method or an additional barrier method of contraception [see *Drug Interactions (7.3)*].

8.4 Pediatric Use

The optimal dose of PAXLOVID has not been established in pediatric patients.

8.5 Geriatric Use

Clinical studies of PAXLOVID include subjects 65 years of age and older and their data contributes to the overall assessment of safety and efficacy [see *Adverse Reactions (6.1)* and *Clinical Studies (14.1)*]. Of the total number of subjects in the integrated dataset consisting of EPIC-HR and EPIC-SR who were randomized to and received PAXLOVID (N=1,578), 165 (10%) were 65 years of age and older and 39 (2%) were 75 years of age and older. No overall differences in safety were observed between these subjects and younger subjects, and other reported clinical experience has not identified differences in safety between the elderly and younger patients, but greater sensitivity of some older individuals cannot be ruled out.

8.6 Renal Impairment

Renal impairment increases nirmatrelvir exposure, which may increase the risk of PAXLOVID adverse reactions. No dosage adjustment is recommended in patients with mild renal impairment (eGFR \geq 60 to $<$ 90 mL/min). Reduce the PAXLOVID dosage in patients with moderate renal impairment (eGFR \geq 30 to $<$ 60 mL/min). Reduce the PAXLOVID dose and dose frequency in patients with severe renal impairment (eGFR $<$ 30 mL/min), including those requiring hemodialysis. On days when patients undergo hemodialysis, the PAXLOVID dose should be administered after hemodialysis [see *Dosage and Administration (2.3)*, *Adverse Reactions (6.1)*, and *Clinical Pharmacology (12.3)*]. Prescriptions should specify the numeric dose of each active ingredient within PAXLOVID. Providers should counsel patients about renal dosing instructions [see *Patient Counseling Information (17)*].

8.7 Hepatic Impairment

No dosage adjustment of PAXLOVID is recommended for patients with mild (Child-Pugh Class A) or moderate (Child-Pugh Class B) hepatic impairment. No pharmacokinetic or safety data are available regarding the use of nirmatrelvir or ritonavir in subjects with severe (Child-Pugh Class C) hepatic impairment, therefore, PAXLOVID is not recommended for use in patients with severe (Child-Pugh Class C) hepatic impairment [see *Warnings and Precautions (5.3) and Clinical Pharmacology (12.3)*].

10 OVERDOSAGE

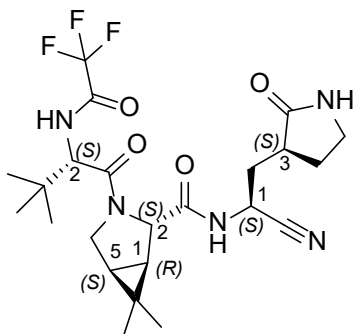
Treatment of overdose with PAXLOVID should consist of general supportive measures including monitoring of vital signs and observation of the clinical status of the patient. There is no specific antidote for overdose with PAXLOVID.

11 DESCRIPTION

PAXLOVID is nirmatrelvir tablets co-packaged with ritonavir tablets. Nirmatrelvir is a SARS-CoV-2 main protease (M^{Pro}) inhibitor, and ritonavir is an HIV-1 protease inhibitor and CYP3A inhibitor.

Nirmatrelvir

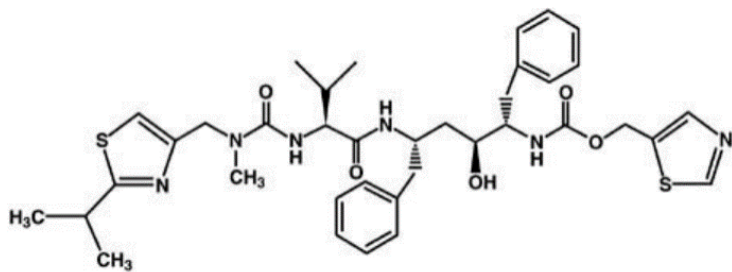
The chemical name of active ingredient of nirmatrelvir is (1*R*,2*S*,5*S*)-*N*-((1*S*)-1-Cyano-2-((3*S*)-2-oxopyrrolidin-3-yl)ethyl)-3-((2*S*)-3,3-dimethyl-2-(2,2,2-trifluoroacetamido)butanoyl)-6,6-dimethyl-3-azabicyclo[3.1.0]hexane-2-carboxamide. It has a molecular formula of C₂₃H₃₂F₃N₅O₄ and a molecular weight of 499.54. Nirmatrelvir has the following structural formula:



Nirmatrelvir is available as immediate-release, film-coated tablets. Each tablet contains 150 mg nirmatrelvir with the following inactive ingredients: colloidal silicon dioxide, croscarmellose sodium, lactose monohydrate, microcrystalline cellulose, and sodium stearyl fumarate. The following are the ingredients in the film coating: hydroxy propyl methylcellulose, iron oxide red, polyethylene glycol, and titanium dioxide.

Ritonavir

Ritonavir is chemically designated as 10-Hydroxy-2-methyl-5-(1-methylethyl)-1- [2-(1 methylethyl)-4-thiazolyl]-3,6-dioxo-8,11-bis(phenylmethyl)-2,4,7,12- tetraazatridecan-13-oic acid, 5-thiazolylmethyl ester, [5*S*-(5*R**,8*R**,10*R**,11*R**)]. Its molecular formula is C₃₇H₄₈N₆O₅S₂, and its molecular weight is 720.95. Ritonavir has the following structural formula:



Ritonavir is available as film-coated tablets. Each tablet contains 100 mg ritonavir with the following inactive ingredients: anhydrous dibasic calcium phosphate, colloidal silicon dioxide, copovidone, sodium stearyl fumarate, and sorbitan monolaurate. The film coating may include the following ingredients: colloidal anhydrous silica, colloidal silicon dioxide, hydroxypropyl cellulose, hypromellose, polyethylene glycol, polysorbate 80, talc, and titanium dioxide.

12 CLINICAL PHARMACOLOGY

12.1 Mechanism of Action

Nirmatrelvir is a severe acute respiratory syndrome coronavirus 2 (SARS-CoV-2) antiviral drug [see *Microbiology (12.4)*].

Ritonavir is an HIV-1 protease inhibitor but is not active against SARS-CoV-2 M^{pro}. Ritonavir inhibits the CYP3A-mediated metabolism of nirmatrelvir, resulting in increased plasma concentrations of nirmatrelvir.

12.2 Pharmacodynamics

Cardiac Electrophysiology

At 3 times the steady state peak plasma concentration (C_{max}) at the recommended dose, nirmatrelvir does not prolong the QTc interval to any clinically relevant extent.

12.3 Pharmacokinetics

The pharmacokinetics of nirmatrelvir/ritonavir were similar in healthy subjects and in subjects with mild-to-moderate COVID-19.

Nirmatrelvir AUC increased in a less than dose proportional manner over a single dose range from 250 mg to 750 mg (0.83 to 2.5 times the approved recommended dose) and multiple dose range from 75 mg to 500 mg (0.25 to 1.67 times the approved recommended dose), when administered in combination with 100 mg ritonavir. Nirmatrelvir steady state was achieved on Day 2 following administration of the approved recommended dosage and the mean accumulation ratio was approximately 2-fold.

The pharmacokinetic properties of nirmatrelvir/ritonavir are displayed in Table 3.

Table 3: Pharmacokinetic Properties of Nirmatrelvir and Ritonavir in Healthy Subjects

	Nirmatrelvir (When Given With Ritonavir)	Ritonavir
Absorption		
T _{max} (hr), median	3.00 ^a	3.98 ^a
Food effect	Test/reference (fed/fasted) ratios of adjusted geometric means (90% CI) AUC _{inf} and C _{max} for nirmatrelvir were 119.67 (108.75, 131.68) and 161.01 (139.05, 186.44), respectively. ^b	
Distribution		
% bound to human plasma proteins	69%	98-99%
Blood-to-plasma ratio	0.60	0.14 ^d
V _z /F (L), mean	104.7 ^c	112.4 ^c
Elimination		
Major route of elimination	Renal elimination	Hepatic metabolism
Half-life (T _{1/2}) (hr), mean	6.05 ^a	6.15 ^a
Oral clearance (CL/F) (L/hr), mean	8.99 ^c	13.92 ^c
Metabolism		
Metabolic pathways	Nirmatrelvir is a CYP3A substrate but when dosed with ritonavir, metabolic clearance is minimal.	Major CYP3A, Minor CYP2D6
Excretion		
% drug-related material in feces	35.3% ^e	86.4% ^f
% of dose excreted as total (unchanged drug) in feces	27.5% ^e	33.8% ^f
% drug-related material in urine	49.6% ^e	11.3% ^f
% of dose excreted as total (unchanged drug) in urine	55.0% ^e	3.5% ^f

Abbreviations: CL/F=apparent clearance; hr=hour; L/hr=liters per hour; T_{1/2}=terminal elimination half-life; T_{max}=the time to reach C_{max}; V_z/F=apparent volume of distribution.

- Represents data after a single dose of 300 mg nirmatrelvir (2 x 150 mg tablet formulation) administered together with 100 mg ritonavir tablet in healthy subjects.
- Following a single oral dose of nirmatrelvir 300 mg boosted ritonavir 100 mg at -12 hours, 0 hours and 12 hours, administered under fed (high fat and high calorie meal) or fasted conditions.
- 300 mg nirmatrelvir (oral suspension formulation) co-administered with 100 mg ritonavir (tablet formulation) twice daily for 3 days.
- Red blood cell to plasma ratio.
- Determined by ¹⁹F-NMR analysis following 300 mg nirmatrelvir oral suspension administered at 0 hr enhanced with 100 mg ritonavir at -12 hours, 0 hours, 12 hours, and 24 hours.
- Determined by ¹⁴C analysis following 600 mg ¹⁴C-ritonavir oral solution (6 times the approved ritonavir dose).

The predicted Day 5 nirmatrelvir exposure parameters in adult subjects with mild-to-moderate COVID-19 who were treated with PAXLOVID in EPIC-HR are presented in Table 4.

Table 4: Predicted Day 5 Nirmatrelvir Exposure Parameters Following Administration of Nirmatrelvir/Ritonavir 300 mg/100 mg Twice Daily in Subjects with Mild-to-Moderate COVID-19

Pharmacokinetic Parameter (units) ^a	Nirmatrelvir ^b
C _{max} (µg/mL)	3.29 (1.93, 5.40)
AUC _{tau} (µg*hr/mL) ^c	28.3 (12.5, 52.5)
C _{min} (µg/mL)	1.40 (0.48, 3.45)

Abbreviations: C_{max}=predicted maximal concentration; C_{min}=predicted minimal concentration (C_{trough}).

- Data presented as geometric mean (10th and 90th percentile).
- Based on 1,017 subjects with their post hoc PK parameters.
- AUC_{tau}=predicted area under the plasma concentration-time profile from time 0 to 12 hours for twice-daily dosing.

Effect of Food

No clinically significant differences in the pharmacokinetics of nirmatrelvir were observed following administration of a high fat meal (800-1,000 calories; 50% fat) to healthy subjects.

Specific Populations

There were no clinically significant differences in the pharmacokinetics of nirmatrelvir based on age (18 to 86 years), sex, or race/ethnicity.

Pediatric Patients

The pharmacokinetics of nirmatrelvir/ritonavir in patients less than 18 years of age have not been established.

Patients with Renal Impairment

The pharmacokinetics of nirmatrelvir in subjects with renal impairment following administration of a single oral dose of nirmatrelvir 100 mg (0.33 times the approved recommended dose) co-administered with ritonavir 100 mg were determined. Compared to healthy controls with no renal impairment, the C_{max} and AUC of nirmatrelvir in subjects with mild renal impairment was 30% and 24% higher, in subjects with moderate renal impairment was 38% and 87% higher, and in subjects with severe renal impairment was 48% and 204% higher, respectively.

The pharmacokinetics of nirmatrelvir in subjects with mild-to-moderate COVID-19 and severe renal impairment (eGFR<30 mL/min) either requiring intermittent hemodialysis (n=12) or not requiring hemodialysis (n=2) were evaluated after administration of 300 mg/100 mg nirmatrelvir/ritonavir once on Day 1 followed by 150 mg/100 mg nirmatrelvir/ritonavir once daily on Days 2-5 for a total of 5 doses.

The administration of 300 mg/100 mg nirmatrelvir/ritonavir once on Day 1 followed by 150 mg/100 mg nirmatrelvir/ritonavir once daily on Days 2-5 in subjects with severe renal impairment, either requiring intermittent hemodialysis or not requiring hemodialysis resulted in comparable exposures on Day 1 and at steady-state (AUC₀₋₂₄ and C_{max}) compared to those observed in subjects with normal renal function receiving 300 mg/100 mg nirmatrelvir/ritonavir twice daily for 5 days. During a 4-hour hemodialysis session, approximately 6.9% of nirmatrelvir dose was cleared through dialysis. Hemodialysis clearance was 1.83 L/h.

Patients with Hepatic Impairment

The pharmacokinetics of nirmatrelvir were similar in patients with moderate (Child-Pugh Class B) hepatic impairment compared to healthy subjects following administration of a single oral dose of nirmatrelvir 100 mg (0.33 times the approved recommended dose) co-administered with ritonavir 100 mg. The impact of severe hepatic impairment (Child-Pugh Class C) on the pharmacokinetics of nirmatrelvir or ritonavir has not been studied.

Clinical Drug Interaction Studies

Table 5 describes the effect of other drugs on the C_{max} and AUC of nirmatrelvir.

Table 5: The Effect of Other Drugs on the Pharmacokinetic Parameters of Nirmatrelvir

Co-administered Drug	Dose (Schedule)		N	Percent Ratio (in combination with co-administered drug/alone) of Nirmatrelvir Pharmacokinetic Parameters (90% CI); No Effect=100	
	Co-administered Drug	Nirmatrelvir/Ritonavir		C_{max}	AUC ^a
Carbamazepine ^b	300 mg twice daily (16 doses)	300 mg/100 mg once daily (2 doses)	10	56.82 (47.04, 68.62)	44.50 (33.77, 58.65)
Itraconazole	200 mg once daily (8 doses)	300 mg/100 mg twice daily (5 doses)	11	118.57 (112.50, 124.97)	138.82 (129.25, 149.11)

Abbreviations: AUC=area under the plasma concentration-time curve; AUC_{inf}=area under the plasma concentration-time profile from time zero extrapolated to infinite time; AUC_{tau}=area under the plasma concentration-time profile from time zero to time tau (τ), the dosing interval.

CI=confidence interval; C_{max} =observed maximum plasma concentrations.

a. For carbamazepine, AUC=AUC_{inf}; for itraconazole, AUC=AUC_{tau}.

b. Carbamazepine titrated up to 300 mg twice daily on Day 8 through Day 15 (e.g., 100 mg twice daily on Day 1 through Day 3 and 200 mg twice daily on Day 4 through Day 7).

Table 6 describes the effect of nirmatrelvir/ritonavir on the C_{max} and AUC_{inf} of other drugs.

Table 6: Effect of Nirmatrelvir/Ritonavir on Pharmacokinetics of Other Drugs

Co-administered Drug	Dose (Schedule)		N	Percent Ratio of Test/Reference of Geometric Means (90% CI); No Effect=100	
	Co-administered Drug	Nirmatrelvir/Ritonavir		C_{max}	AUC _{inf}
Midazolam ^a	2 mg (1 dose)	300 mg/100 mg twice daily (9 doses)	10	368.33 (318.91, 425.41)	1430.02 (1204.54, 1697.71)
Dabigatran ^a	75 mg (1 dose)	300 mg/100 mg twice daily (4 doses)	24	233.06 (172.14, 315.54)	194.47 (155.29, 243.55)
Rosuvastatin ^a	10 mg (1 dose)	300 mg/100 mg twice daily (3 doses)	12	212.44 (174.31, 258.90)	131.18 (115.89, 148.48)

Abbreviations: AUC_{inf}=area under the plasma concentration-time curve from time zero extrapolated to infinite time; CI=confidence interval; C_{max} =observed maximum plasma concentrations; CYP3A4=cytochrome P450 3A4; OATP1B1=organic anion transporter polypeptide 1B1; P-gp=p-glycoprotein.

a. For midazolam, Test=nirmatrelvir/ritonavir plus midazolam, Reference=Midazolam. Midazolam is an index substrate for CYP3A4. For dabigatran, Test=nirmatrelvir/ritonavir plus dabigatran, Reference=Dabigatran. Dabigatran is an index substrate for P-gp. For rosuvastatin, Test=nirmatrelvir/ritonavir plus rosuvastatin, Reference=Rosuvastatin. Rosuvastatin is an index substrate for OATP1B1.

In Vitro Studies

Cytochrome P450 (CYP) Enzymes:

- Nirmatrelvir is a reversible and time-dependent inhibitor of CYP3A, but not an inhibitor CYP1A2, CYP2B6, CYP2C8, CYP2C9, CYP2C19, or CYP2D6. Nirmatrelvir is an inducer of CYP2B6, 2C8,

2C9, and 3A4, but there is minimal risk for pharmacokinetic interactions arising from induction of these CYP enzymes at the proposed therapeutic dose.

- Ritonavir is a substrate of CYP2D6 and CYP3A. Ritonavir is an inducer of CYP1A2, CYP2C9, CYP2C19, CYP2B6, and CYP3A.

Transporter Systems: Nirmatrelvir is an inhibitor of P-gp and OATP1B1. Nirmatrelvir is a substrate for P-gp, but not BCRP, MATE1, MATE2K, NTCP, OAT1, OAT2, OAT3, OCT1, OCT2, PEPT1, OATP1B1, OATP1B3, OATP2B1, or OATP4C1.

12.4 Microbiology

Mechanism of Action

Nirmatrelvir is a peptidomimetic inhibitor of the SARS-CoV-2 main protease (M^{pro}), also referred to as 3C-like protease (3CL pro) or nonstructural protein 5 (nsp5) protease. Inhibition of SARS-CoV-2 M^{pro} renders it incapable of processing the viral polyproteins pp1a and pp1ab, preventing viral replication. Nirmatrelvir inhibited the activity of recombinant SARS-CoV-2 M^{pro} in a biochemical assay with a K_i value of 3.1 nM and an IC_{50} value of 19.2 nM. Nirmatrelvir was found to bind directly to the SARS-CoV-2 M^{pro} active site by X-ray crystallography.

Antiviral Activity

Cell Culture Antiviral Activity

Nirmatrelvir exhibited antiviral activity against SARS-CoV-2 (USA-WA1/2020 isolate) infection of differentiated normal human bronchial epithelial (dNHBE) cells with EC_{50} and EC_{90} values of 62 nM (31 ng/mL) and 181 nM (90 ng/mL), respectively, after 3 days of drug exposure.

The antiviral activity of nirmatrelvir against the Omicron sub-variants BA.2, BA.2.12.1, BA.4, BA.4.6, BA.5, BF.7, BQ.1, BQ.1.11, XBB.1.5, EG.5, and JN.1 was assessed in Vero E6-TMPRSS2 cells in the presence of a P-gp inhibitor. Nirmatrelvir had a median EC_{50} value of 88 nM (range: 39-146 nM) against the Omicron sub-variants, reflecting EC_{50} value fold changes ≤ 1.8 relative to the USA-WA1/2020 isolate.

In addition, the antiviral activity of nirmatrelvir against the SARS-CoV-2 Alpha, Beta, Gamma, Delta, Lambda, Mu, and Omicron BA.1 variants was assessed in Vero E6 P-gp knockout cells. Nirmatrelvir had a median EC_{50} value of 25 nM (range: 16-141 nM). The Beta variant was the least susceptible variant tested, with an EC_{50} value fold change of 3.7 relative to USA-WA1/2020. The other variants had EC_{50} value fold changes ≤ 1.1 relative to USA-WA1/2020.

Clinical Antiviral Activity

In clinical trial EPIC-HR, which enrolled subjects who were primarily infected with the SARS-CoV-2 Delta variant, PAXLOVID treatment was associated with a 0.83 \log_{10} copies/mL greater median decline in viral RNA shedding levels in nasopharyngeal samples through Day 5 (mITT1 analysis set, all treated subjects with onset of symptoms ≤ 5 days who at baseline did not receive nor were expected to receive COVID-19 therapeutic mAb treatment); similar results were observed in the mITT2 analysis set (all treated subjects with onset of symptoms ≤ 5 days). In the EPIC-SR trial, which included subjects who were infected with SARS-CoV-2 Delta (79%) or Omicron (19%) variants, PAXLOVID treatment was associated with a 1.05 \log_{10} copies/mL greater median decline in viral RNA shedding levels in nasopharyngeal samples through Day 5, with similar declines observed in subjects infected with Delta or Omicron variants. The degree of reduction in viral RNA levels relative to placebo following 5 days of PAXLOVID treatment was similar between unvaccinated high-risk subjects in EPIC-HR and vaccinated high-risk subjects in EPIC-SR.

Antiviral Resistance

In Cell Culture and Biochemical Assays

SARS-CoV-2 M^{pro} residues potentially associated with nirmatrelvir resistance have been identified using a variety of methods, including SARS-CoV-2 resistance selection, testing of recombinant SARS-CoV-2 viruses with M^{pro} substitutions, and biochemical assays with recombinant SARS-CoV-2 M^{pro} containing amino acid substitutions. Table 7 indicates M^{pro} substitutions and combinations of M^{pro} substitutions that have been observed in SARS-CoV-2 under nirmatrelvir selective pressure in cell culture. Individual M^{pro} substitutions are listed regardless of whether they occurred alone or in combination with other M^{pro} substitutions. Note that the M^{pro} S301P and T304I substitutions overlap the P6 and P3 positions of the nsp5/nsp6 cleavage site located at the C-terminus of M^{pro}. Substitutions at other M^{pro} cleavage sites have not been associated with nirmatrelvir resistance in cell culture. The clinical significance of these substitutions is unknown.

Table 7: SARS-CoV-2 M^{pro} Amino Acid Substitutions Selected by Nirmatrelvir in Cell Culture^a

Single Substitutions (EC ₅₀ value fold change in cell culture)	T21I (1.1-4.8), S46F (ND), L50F (1.2-4.2), P108S (ND), T135I (ND), F140L (4.1), S144A (2.2-5.3), C160F (2.1), E166A (3.3), E166V (25-288), L167F (1.9-2.5), T169I (ND), H172Y (15), A173V (0.9-2.3), V186A (ND), R188G (ND), A191V (0.7-1.5), A193P (ND), P252L (5.9), S301P (ND), and T304I (1.4-5.5).
≥2 Substitutions (EC ₅₀ value fold change in cell culture)	T21I+S144A (9.4), T21I+E166V (83-250), T21I+A173V (3.1-8.9), T21I+T304I (3.0-7.9), L50F+E166V (34-175), L50F+T304I (5.9), T135I+T304I (3.8), F140L+A173V (10-17), H172Y+P252L (ND), A173V+T304I (5.8-20), T21I+L50F+A193P+S301P (29), T21I+S144A+T304I (11-28), T21I+C160F+A173V+V186A+T304I (28-29), T21I+A173V+T304I (15-16), and L50F+F140L+L167F+T304I (43-55).

Abbreviation: ND=no data.

a. EC₅₀ value fold change ranges are shown in instances where multiple data points have been reported.

Table 8 indicates M^{pro} substitutions and combinations of M^{pro} substitutions that have been found to reduce nirmatrelvir activity ≥3-fold (based on IC₅₀ or K_i values) in biochemical assays using recombinant SARS-CoV-2 M^{pro}. Note that these M^{pro} substitutions were laboratory engineered and most were not observed in PAXLOVID-treated subjects in clinical trials. In addition, according to public sequence databases, most of these substitutions have not been observed in clinical isolates or have been observed but with global cumulative frequencies ≤0.002%. Thus, the clinical relevance of these substitutions is unclear. The following M^{pro} substitutions and combinations of M^{pro} substitutions emerged in cell culture in the presence of nirmatrelvir but conferred <3-fold reduced nirmatrelvir activity in biochemical assays: T21I, S46F, L50F, P108S, T135I, C160F, T169I, V186A, A191V, A193P, P252L, S301P, T304I, T21I+T304I, and L50F+T304I.

Table 8: SARS-CoV-2 M^{pro} Amino Acid Substitutions That Reduce Nirmatrelvir Activity \geq 3-Fold in Biochemical Assays

Single Substitutions (IC ₅₀ /K _i value fold change in biochemical assay)	Y54A/C (3.0-25), F140A/L/S (1.2-230), G143S (3.6-148), S144A/F/G/M/W/Y (1.2-76), S144D/E/H/Q/T/V (81-480), S144K/L/P/R (1,165->5,319), H164N (1.9-6.7), M165D/F/G/T (5.7-51), M165H/K/P/R/W (>384), M165Y (3,838), E166A/G/K/L/Q (4.5-77), E166D/H/I/N/V/Y (143-708), E166R/V (>1,538-7,700), L167F (1.4-4.5), P168del (4.5-9.3), H172D/F/G/K/Q/Y (10-91), H172A/C/E/M/N/R/V/Y (114-858), H172I/L/S/T (1,172-6,740), A173S/V (4.1-52), R188G (38), Q189E/K (1.6-16), Q192A/C/D/E/F/G/H/I/K/L/P/R/S/T/V/W (5.0-61), Q192Y (>384), A260V (0.6-3.3), and V297A (3.0).
\geq 2 Substitutions (IC ₅₀ /K _i value fold change in biochemical assay)	T21I+S144A (20), T21I+E166V (120-11,000), T21I+A173V (15), L50F+E166V (100-4,500), T135I+T304I (5.1), F140L+A173V (95), S144A+T304I (28), E166V+L232R (5,700), P168del+A173V (170-536), H172Y+P252L (180), A173V+T304I (28), T21I+S144A+T304I (51), T21I+A173V+T304I (55), L50F+E166A+L167F (52-180), T21I+L50F+A193P+S301P (7.3), L50F+F140L+L167F+T304I (190), and T21I+C160F+A173V+V186A+T304I (28).

In Clinical Trials

Treatment-emergent substitutions were evaluated among subjects in clinical trials EPIC-HR/SR with sequence data available at both baseline and post-baseline visits (n=907 PAXLOVID-treated subjects, n=946 placebo-treated subjects). SARS-CoV-2 M^{pro} amino acid changes were classified as PAXLOVID treatment-emergent substitutions if they occurred at the same amino acid position in 3 or more PAXLOVID-treated subjects and were \geq 2.5-fold more common in PAXLOVID-treated subjects than placebo-treated subjects. The following PAXLOVID treatment-emergent M^{pro} substitutions were observed: T98I/R/del(n=4), E166V (n=3), and W207L/R/del (n=4). In biochemical assays, the T98I and W207L/R substitutions did not affect nirmatrelvir activity (K_i value fold changes were 0.3 and 0.7/0.3, respectively), whereas the E166V substitution (which occurs at a M^{pro}-nirmatrelvir contact residue) reduced nirmatrelvir activity 187-7,700-fold. Within the M^{pro} cleavage sites, the following PAXLOVID treatment-emergent substitutions were observed: A5328S/V(n=7) and S6799A/P/Y (n=4). These cleavage site substitutions were not associated with the co-occurrence of any specific M^{pro} substitutions. In a cell culture replicon assay, the A5328S/V and S6799A substitutions did not affect nirmatrelvir activity (EC₅₀ value fold changes were 0.3/0.2 and 0.7, respectively).

None of the treatment-emergent substitutions listed above in M^{pro} or M^{pro} cleavage sites occurred in PAXLOVID-treated subjects who experienced hospitalization. Thus, the clinical significance of these substitutions is unknown.

Viral RNA Rebound and Treatment-Emergent Substitutions

EPIC-HR and EPIC-SR were not designed to evaluate COVID-19 rebound; exploratory analyses were conducted to assess the relationship between PAXLOVID use and rebound in viral RNA shedding levels.

Post-treatment increases in SARS-CoV-2 RNA shedding levels in nasopharyngeal samples were observed on Day 10 and/or Day 14 in a subset of PAXLOVID and placebo recipients in EPIC-HR and EPIC-SR, irrespective of COVID-19 symptoms. The frequency of detection of post-treatment viral RNA rebound varied according to analysis parameters, but was generally similar among PAXLOVID and placebo recipients. A similar or smaller percentage of placebo recipients compared to PAXLOVID recipients had nasopharyngeal viral RNA results < lower limit of quantitation (LLOQ) at all study timepoints in both the treatment and post-treatment periods.

In EPIC-HR, of 59 PAXLOVID-treated subjects identified with post-treatment viral RNA rebound and with available viral sequence data, treatment-emergent substitutions in M^{pro} potentially reducing nirmatrelvir activity were detected in 2 (3%) subjects, including E166V in 1 subject and T304I in 1 subject. Both subjects had viral RNA shedding levels <LLOQ by Day 14.

Post-treatment viral RNA rebound was not associated with the primary clinical outcome of COVID-19 related hospitalization or death from any cause through Day 28 following the single 5-day course of PAXLOVID treatment. The clinical relevance of post-treatment increases in viral RNA following PAXLOVID or placebo treatment is unknown.

Cross-Resistance

Cross-resistance is not expected between nirmatrelvir and remdesivir or any other anti-SARS-CoV-2 agents with different mechanisms of action (i.e., agents that are not M^{pro} inhibitors).

13 NONCLINICAL TOXICOLOGY

13.1 Carcinogenesis, Mutagenesis, Impairment of Fertility

Nirmatrelvir

Carcinogenicity studies have not been conducted with nirmatrelvir.

Nirmatrelvir was negative for mutagenic or clastogenic activity in a battery of *in vitro* and *in vivo* assays including the Ames bacterial reverse mutation assay using *S. typhimurium* and *E. coli*, the *in vitro* micronucleus assay using human lymphoblastoid TK6 cells, and the *in vivo* rat micronucleus assays.

In a fertility and early embryonic development study, nirmatrelvir was administered orally to male and female rats at doses of 60, 200, or 1,000 mg/kg/day once daily beginning 14 days prior to mating, throughout the mating phase, and continued through GD 6 for females and for a total of 32 doses for males. There were no effects on fertility, reproductive performance, or early embryonic development at doses up to 1,000 mg/kg/day, resulting in systemic exposure (AUC₂₄) approximately 5 times higher than exposure at the approved human dose of PAXLOVID.

Ritonavir

Carcinogenicity studies in mice and rats have been conducted on ritonavir. In male mice, at levels of 50, 100, or 200 mg/kg/day, there was a dose dependent increase in the incidence of both adenomas and combined adenomas and carcinomas in the liver. Based on AUC measurements, the exposure at the high dose was approximately 25 times higher than the exposure in humans at the approved human dose of PAXLOVID. No carcinogenic effects were observed in females at up to the highest dose tested, resulting in systemic exposure (AUC₂₄) approximately 25 times higher than the exposure in humans at the approved human dose of PAXLOVID. In rats dosed at levels of 7, 15, or 30 mg/kg/day, there were no carcinogenic effects. In this study, the exposure at the high dose was approximately 5 times higher than the exposure in humans at the approved human dose of PAXLOVID.

Ritonavir was found to be negative for mutagenic or clastogenic activity in a battery of *in vitro* and *in vivo* assays including the Ames bacterial reverse mutation assay using *S. typhimurium* and *E. coli*, the mouse lymphoma assay, the mouse micronucleus test and chromosomal aberration assays in human lymphocytes.

Ritonavir produced no effects on fertility in rats at drug exposures approximately 18 (male) and 27 (female) times higher than the exposure in humans at the approved human dose of PAXLOVID.

14 CLINICAL STUDIES

14.1 Efficacy in Subjects at High Risk of Progression to Severe COVID-19 (EPIC-HR)

EPIC-HR (NCT04960202) was a Phase 2/3, randomized, double-blind, placebo-controlled trial in non-hospitalized symptomatic adult subjects with a laboratory confirmed diagnosis of SARS-CoV-2 infection. Eligible subjects were 18 years of age and older with at least 1 of the following risk factors for progression to severe disease: diabetes, overweight (BMI >25), chronic lung disease (including asthma), chronic kidney disease, current smoker, immunosuppressive disease or immunosuppressive treatment, cardiovascular disease, hypertension, sickle cell disease, neurodevelopmental disorders, active cancer, medically-related technological dependence, or were 60 years of age and older regardless of comorbidities. Subjects with COVID-19 symptom onset of ≤ 5 days were included in the study. Subjects were randomized (1:1) to receive PAXLOVID (nirmatrelvir/ritonavir 300 mg/100 mg) or placebo orally every 12 hours for 5 days. The trial excluded individuals with a history of prior COVID-19 infection or vaccination and excluded individuals taking any medications with clinically significant drug interactions with PAXLOVID. The primary efficacy endpoint was the proportion of subjects with COVID-19 related hospitalization or death from any cause through Day 28. The analysis was conducted in the modified intent-to-treat (mITT) analysis set [all treated subjects with onset of symptoms ≤ 3 days who at baseline did not receive nor were expected to receive COVID-19 therapeutic monoclonal antibody (mAb) treatment], the mITT1 analysis set (all treated subjects with onset of symptoms ≤ 5 days who at baseline did not receive nor were expected to receive COVID-19 therapeutic mAb treatment), and the mITT2 analysis set (all treated subjects with onset of symptoms ≤ 5 days).

A total of 2,113 subjects were randomized to receive either PAXLOVID or placebo. At baseline, mean age was 45 years; 51% were male; 71% were White, 15% were Asian, 9% were American Indian or Alaska Native, 4% were Black or African American, and 1% was missing or unknown; 41% were Hispanic or Latino; 67% of subjects had onset of symptoms ≤ 3 days before initiation of study treatment; 49% of subjects were serological negative at baseline; the mean (SD) baseline viral RNA in nasopharyngeal samples was 4.71 \log_{10} copies/mL (2.89); 27% of subjects had a baseline viral RNA of $\geq 10^7$ (\log_{10} copies/mL); 6% of subjects either received or were expected to receive COVID-19 therapeutic monoclonal antibody treatment at the time of randomization and were excluded from the mITT and mITT1 analyses.

The baseline demographic and disease characteristics were balanced between the PAXLOVID and placebo groups.

The proportions of subjects who discontinued treatment due to an adverse event were 2.0% in the PAXLOVID group and 4.2% in the placebo group.

Table 9 provides results of the primary endpoint in mITT1 analysis population. For the primary endpoint, the relative risk reduction in the mITT1 analysis population for PAXLOVID compared to placebo was 86% (95% CI: 72%, 93%).

Table 9: COVID-19 Related Hospitalization or Death from Any Cause Through Day 28 in Non-Hospitalized Adults with COVID-19 (mITT1 Analysis Set): EPIC-HR

	PAXLOVID (N=977)	Placebo (N=989)
COVID-19 Related Hospitalization or Death from Any Cause Through Day 28		
n (%)	9 (0.9%)	64 (6.5%)
Reduction Relative to Placebo ^a (95% CI), %	-5.6 (-7.3, -4.0)	
COVID-19 Related Hospitalization Through Day 28, %	9 (0.9%)	63 (6.4%)
All-cause Mortality Through Day 28 ^b , %	0	12 (1.2%)

Abbreviations: CI=confidence interval; COVID-19=coronavirus disease 2019; mAb=monoclonal antibody; mITT1=modified intent-to-treat 1 (all treated subjects with onset of symptoms ≤5 days who at baseline did not receive nor were expected to receive COVID-19 therapeutic mAb treatment).

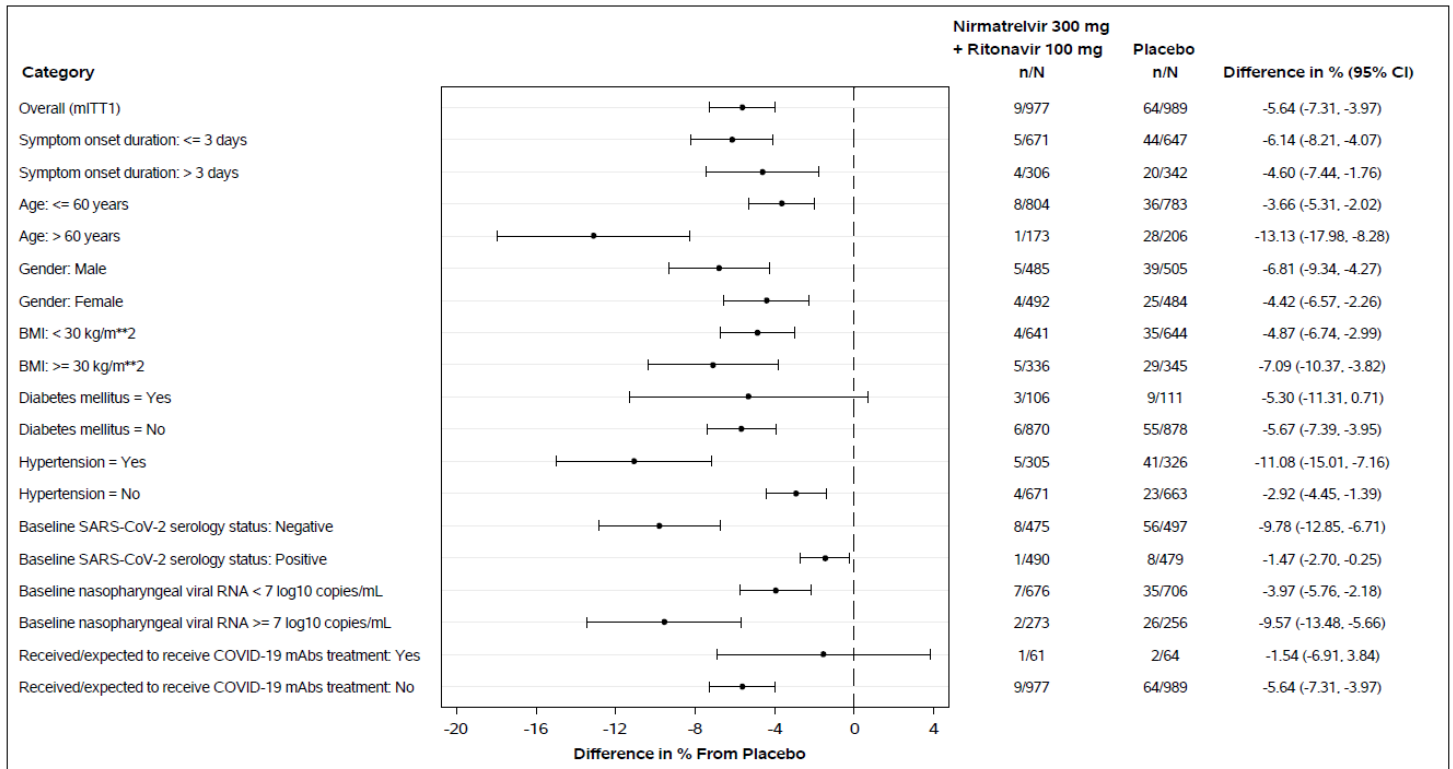
The determination of primary efficacy was based on a planned interim analysis of 754 subjects in mITT population. The estimated risk reduction was -6.5% with a 95% CI of (-9.3%, -3.7%) and 2-sided p-value <0.0001.

- a. The estimated cumulative proportion of subjects hospitalized or death by Day 28 was calculated for each treatment group using the Kaplan-Meier method, where subjects without hospitalization and death status through Day 28 were censored at the time of study discontinuation.
- b. For the secondary endpoint of all-cause mortality through Week 24, there were 0 and 15 (1%) events in the PAXLOVID arm and placebo arm, respectively.

Consistent results were observed in the mITT and mITT2 analysis populations.

Similar trends have been observed across subgroups of subjects (*see Figure 1*).

Figure 1: Subgroup Analysis of Adults with COVID-19 Dosed within 5 Days of Symptom Onset with COVID-19 Related Hospitalization or Death from Any Cause Through Day 28: EPIC-HR



Abbreviations: BMI=body mass index; COVID-19=coronavirus disease 2019; mAb=monoclonal antibody; mITT=modified intent-to-treat; SARS-CoV-2=severe acute respiratory syndrome coronavirus 2.

N=number of subjects in the category of the analysis set.

All categories are based on mITT1 population except for COVID-19 mAb treatment which is based on mITT2 population.

Seropositivity was defined if results were positive in either Elecsys anti-SARS-CoV-2 S or Elecsys anti-SARS-CoV-2 (N) assay.

The difference of the proportions in the 2 treatment groups and its 95% confidence interval based on normal approximation of the data are presented.

Among subjects who were SARS-CoV-2 seropositive at baseline, 1/490 (0.2%) PAXLOVID recipients versus 8/479 (1.7%) placebo recipients met the primary endpoint of COVID-19 related hospitalization or death from any cause through Day 28 [reduction relative to placebo -1.47% (-2.70%, -0.25%)].

14.2 Trial in Unvaccinated Subjects Without a Risk Factor for Progression to Severe COVID-19 or Subjects Fully Vaccinated Against COVID-19 With at Least One Factor for Progression to Severe COVID-19 (EPIC-SR)

PAXLOVID is not indicated for the treatment of COVID-19 in patients without a risk factor for progression to severe COVID-19.

EPIC-SR (NCT05011513) was a Phase 2/3, randomized, double-blind, placebo-controlled trial in non-hospitalized symptomatic adult subjects with a laboratory confirmed diagnosis of SARS-CoV-2 infection. Eligible subjects were 18 years of age or older with COVID-19 symptom onset of ≤ 5 days who were at standard risk for progression to severe disease. The trial included previously unvaccinated subjects with no risk factors for progression to severe disease or subjects fully vaccinated against COVID-19 (i.e., completed a primary vaccination series) with at least 1 of the risk factors for progression to severe disease as defined in EPIC-HR. Through the December 19, 2021, data cutoff, a total of 1,075 subjects were randomized (1:1) to receive PAXLOVID or placebo orally every 12 hours for 5 days; of these, 59% were fully vaccinated high-risk subjects.

The primary endpoint in this trial, the difference in time to sustained alleviation of all targeted COVID-19 signs and symptoms through Day 28 among PAXLOVID versus placebo recipients, was not met.

In an exploratory analysis of the subgroup of fully vaccinated subjects with at least 1 risk factor for progression to severe disease, a non-statistically significant numerical reduction relative to placebo for the secondary endpoint of COVID-19 related hospitalization or death from any cause through Day 28 was observed.

14.3 Post-Exposure Prophylaxis Trial

PAXLOVID is not indicated for the post-exposure prophylaxis of COVID-19.

In a double-blind, double-dummy, placebo-controlled trial, the efficacy of PAXLOVID when administered for 5 or 10 days as post-exposure prophylaxis of COVID-19 was evaluated. Eligible subjects were asymptomatic adults 18 years of age and older who were SARS-CoV-2 negative at baseline and who lived in the same household with symptomatic individuals with a recent diagnosis of SARS-CoV-2. A total of 2,736 subjects were randomized (1:1:1) to receive PAXLOVID orally every 12 hours for 5 days, PAXLOVID orally every 12 hours for 10 days, or placebo.

The primary endpoint for this trial was not met. The primary endpoint was the risk reduction between the 5-day and 10-day PAXLOVID regimens versus placebo in the proportion of subjects who developed RT-PCR or RAT-confirmed symptomatic SARS-CoV-2 infection through Day 14 who had a negative SARS-CoV-2 RT-PCR result at baseline. The proportion of subjects who had events through Day 14 was 2.6% for the 5-day PAXLOVID regimen, 2.4% for the 10-day PAXLOVID regimen, and 3.9% for placebo. There was not a statistically significant risk reduction versus placebo for either the 5-day or 10-day PAXLOVID regimen.

16 HOW SUPPLIED/STORAGE AND HANDLING

How Supplied

PAXLOVID is nirmatrelvir tablets co-packaged with ritonavir tablets. It is supplied in three different Dose Packs.

Nirmatrelvir tablets and ritonavir tablets are supplied in separate blister cavities within the same child-resistant blister card.

Dose Pack	Content	NDC	Description
300 mg nirmatrelvir; 100 mg ritonavir	Each Carton Contains: 30 tablets divided in 10 blister cards	0069-5045-30	Nirmatrelvir tablets: Oval, pink immediate-release, film-coated tablets debossed with "PFE" on one side and "3CL" on the other side. Ritonavir tablets: White to off-white, capsule-shaped, film-coated tablets debossed with "H" on one side and "R9" on the other side.
		Or	
		0069-5321-30	Nirmatrelvir tablets: Oval, pink immediate-release, film-coated tablets debossed with "PFE" on one side and "3CL" on the other side. Ritonavir tablets: White film-coated ovaloid tablets debossed with "NK" on one side.
	Each Blister Card Contains: 2 nirmatrelvir tablets (150 mg each) and 1 ritonavir tablet (100 mg)	0069-5045-06	Nirmatrelvir tablets: Oval, pink immediate-release, film-coated tablets debossed with "PFE" on one side and "3CL" on the other side. Ritonavir tablets: White to off-white, capsule-shaped, film-coated tablets debossed with "H" on one side and "R9" on the other side.
		Or	
		0069-5321-03	Nirmatrelvir tablets: Oval, pink immediate-release, film-coated tablets debossed with "PFE" on one side and "3CL" on the other side. Ritonavir tablets: White film-coated ovaloid tablets debossed with "NK" on one side.

Dose Pack	Content	NDC	Description
150 mg nirmatrelvir; 100 mg ritonavir	Each Carton Contains: 20 tablets divided in 10 blister cards	0069-5317-20	Nirmatrelvir tablets: Oval, pink immediate-release, film-coated tablets debossed with "PFE" on one side and "3CL" on the other side. Ritonavir tablets: White film-coated ovaloid tablets debossed with "NK" on one side.
		Or	
		0069-5434-20	Nirmatrelvir tablets: Oval, pink immediate-release, film-coated tablets debossed with "PFE" on one side and "3CL" on the other side. Ritonavir tablets: White to off-white, capsule-shaped, film-coated tablets debossed with "H" on one side and "R9" on the other side.
	Each Blister Card Contains: 1 nirmatrelvir tablet (150 mg) and 1 ritonavir tablet (100 mg)	0069-5317-02	Nirmatrelvir tablets: Oval, pink immediate-release, film-coated tablets debossed with "PFE" on one side and "3CL" on the other side. Ritonavir tablets: White film-coated ovaloid tablets debossed with "NK" on one side.
Or			
	0069-5434-02	Nirmatrelvir tablets: Oval, pink immediate-release, film-coated tablets debossed with "PFE" on one side and "3CL" on the other side. Ritonavir tablets: White to off-white, capsule-shaped, film-coated tablets debossed with "H" on one side and "R9" on the other side.	

Dose Pack	Content	NDC	Description
300 mg nirmatrelvir; 100 mg ritonavir (Day 1) 150 mg nirmatrelvir; 100 mg ritonavir (Days 2-5)	Each Carton Contains: 11 tablets in 1 blister card	0069-0521-11	Nirmatrelvir tablets: Oval, pink immediate-release, film-coated tablets debossed with "PFE" on one side and "3CL" on the other side. Ritonavir tablets: White film-coated ovaloid tablets debossed with "NK" on one side.
		Or	
		0069-5450-11	Nirmatrelvir tablets: Oval, pink immediate-release, film-coated tablets debossed with "PFE" on one side and "3CL" on the other side. Ritonavir tablets: White to off-white, capsule-shaped, film-coated tablets debossed with "H" on one side and "R9" on the other side.
		Each Blister Card Contains: 6 nirmatrelvir tablets (150 mg) and 5 ritonavir tablets (100 mg)	0069-0521-11
Or			
0069-5450-11	Nirmatrelvir tablets: Oval, pink immediate-release, film-coated tablets debossed with "PFE" on one side and "3CL" on the other side. Ritonavir tablets: White to off-white, capsule-shaped, film-coated tablets debossed with "H" on one side and "R9" on the other side.		

Storage and Handling

Store at USP controlled room temperature 20°C to 25°C (68°F to 77°F); excursions permitted between 15°C to

30°C (59°F to 86°F).

17 PATIENT COUNSELING INFORMATION

Advise the patient to read the FDA-approved patient labeling (Patient Information).

Drug Interactions

Inform patients that PAXLOVID may interact with certain drugs and is contraindicated for use with certain drugs; therefore, advise patients to report to their healthcare provider the use of any prescription, non-prescription medication, or herbal products [see *Boxed Warning, Contraindications (4), Warnings and Precautions (5.1), and Drug Interactions (7)*].

Hypersensitivity Reactions

Inform patients that anaphylaxis, serious skin reactions, and other hypersensitivity reactions have been reported, even following a single dose of PAXLOVID. Advise them to immediately discontinue the drug and to inform their healthcare provider at the first sign of a skin rash, hives or other skin reactions, difficulty in swallowing or breathing, any swelling suggesting angioedema (for example, swelling of the lips, tongue, face, tightness of the throat, hoarseness), or other symptoms of an allergic reaction [see *Warnings and Precautions (5.2)*].

Dosage Modification in Patients with Renal Impairment

Moderate Renal Impairment

To ensure appropriate dosing in patients with moderate renal impairment, instruct such patients that they will be taking one 150 mg nirmatrelvir tablet with one 100 mg ritonavir tablet together **twice daily** for 5 days [see *Dosage and Administration (2.3)*].

Severe Renal Impairment (Including Those Requiring Hemodialysis)

To ensure appropriate dosing in patients with severe renal impairment, including those requiring hemodialysis, instruct patients that they will be taking two 150 mg nirmatrelvir tablets with one 100 mg ritonavir tablet together **once on Day 1**, followed by one 150 mg nirmatrelvir tablet with one 100 mg ritonavir together **once daily on Days 2-5**. Instruct patients to take their dose at approximately the same time each day. On days when patients undergo hemodialysis, instruct them to take the PAXLOVID dose after hemodialysis [see *Dosage and Administration (2.3)*].

Administration Instructions

Inform patients to take PAXLOVID with or without food at approximately the same time each day as instructed. Advise patients to swallow all tablets for PAXLOVID whole and not to chew, break, or crush the tablets. Alert the patient of the importance of completing the full 5-day treatment course and to continuing isolation in accordance with public health recommendations to maximize viral clearance and minimize transmission of SARS-CoV-2. If the patient misses a dose of PAXLOVID within 8 hours of the time it is usually taken, the patient should take it as soon as possible and resume the normal dosing schedule. If the patient misses a dose by more than 8 hours, the patient should not take the missed dose and instead take the next dose at the regularly scheduled time. The patient should not double the dose to make up for a missed dose [see *Dosage and Administration (2)*].

This product's labeling may have been updated. For the most recent prescribing information, please visit www.pfizer.com.



Distributed by

Pfizer Labs

Division of Pfizer Inc.
New York, NY 10001

LAB-1523-6.3a

PATIENT INFORMATION
PAXLOVID (pax-LO-vid)
(nirmatrelvir tablets; ritonavir tablets)
co-packaged for oral use

What is the most important information I should know about PAXLOVID?

PAXLOVID can interact with other medicines causing severe or life-threatening side effects or death. It is important to know the medicines that should not be taken with PAXLOVID.

Do not take PAXLOVID if:

- you are taking any of the following medicines:

○ alfuzosin	○ ivabradine	○ quinidine
○ amiodarone	○ lomitapide	○ ranolazine
○ apalutamide	○ lovastatin	○ rifampin
○ carbamazepine	○ lumacaftor/ivacaftor	○ rifapentine
○ colchicine	○ lurasidone	○ St. John's Wort (<i>hypericum perforatum</i>)
○ dihydroergotamine	○ methylergonovine	○ sildenafil (Revatio®) for pulmonary arterial hypertension
○ dronedarone	○ midazolam (oral)	○ silodosin
○ eletriptan	○ naloxegol	○ simvastatin
○ enzalutamide	○ phenobarbital	○ suzetrigine
○ eplerenone	○ phenytoin	○ tolvaptan
○ ergotamine	○ pimozide	○ triazolam
○ finerenone	○ primidone	○ ubrogepant
○ flecainide	○ propafenone	○ voclosporin
○ flibanserin		

These are not the only medicines that may cause serious or life-threatening side effects if taken with PAXLOVID. PAXLOVID may increase or decrease the levels of multiple other medicines. It is very important to tell your healthcare provider about all of the medicines you are taking because additional laboratory tests or changes in the dose of your other medicines may be necessary during treatment with PAXLOVID. Your healthcare provider may also tell you about specific symptoms to watch out for that may indicate that you need to stop or decrease the dose of some of your other medicines.

- you are allergic to nirmatrelvir, ritonavir, or any of the ingredients in PAXLOVID. See the end of this leaflet for a complete list of ingredients in PAXLOVID. See “**What are the possible side effects of PAXLOVID?**” for signs and symptoms of allergic reactions.

What is PAXLOVID?

PAXLOVID is a prescription medicine used to treat mild-to-moderate coronavirus disease 2019 (COVID-19) in adults who are at high risk for progression to severe COVID-19, including hospitalization or death.

PAXLOVID is not approved for use as pre-exposure or post-exposure treatment for prevention of COVID-19.

Before taking PAXLOVID, tell your healthcare provider about all of your medical conditions, including if you:

- have kidney problems. You may need a different dose or dosing schedule of PAXLOVID.
- have liver problems, including hepatitis.
- have Human Immunodeficiency Virus 1 (HIV-1) infection. PAXLOVID may lead to some HIV-1 medicines not working as well in the future.
- are pregnant or plan to become pregnant. It is not known if PAXLOVID can harm your unborn baby. Tell your healthcare provider right away if you are or if you become pregnant.
- are breastfeeding or plan to breastfeed. PAXLOVID can pass into your breast milk. Talk to your healthcare provider about the best way to feed your baby during treatment with PAXLOVID.

Tell your healthcare provider about all the medicines you take, including prescription and over-the-counter medicines, vitamins, and herbal supplements.

- Your healthcare provider can tell you if it is safe to take PAXLOVID with other medicines.
- You can ask your healthcare provider or pharmacist for a list of medicines that interact with PAXLOVID.
- Do not start taking a new medicine without telling your healthcare provider.

Tell your healthcare provider if you are taking combined birth control (hormonal contraceptive). PAXLOVID may affect how your hormonal contraceptives work. Females who are able to become pregnant should use another effective alternative form of contraception or an additional barrier method of contraception during treatment with

PAXLOVID. Talk to your healthcare provider if you have any questions about contraceptive methods that might be right for you.

How should I take PAXLOVID?

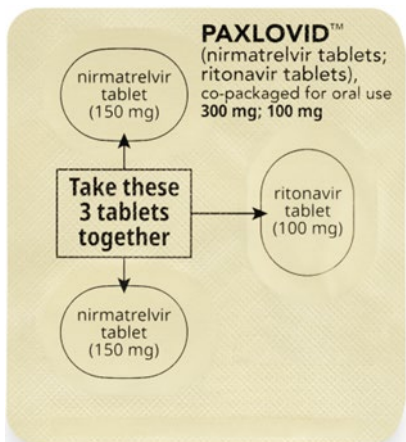
- Take PAXLOVID exactly as your healthcare provider tells you to take it.
- **PAXLOVID consists of 2 medicines: nirmatrelvir tablets and ritonavir tablets. The 2 medicines are taken together for 5 days.**
 - Nirmatrelvir is an oval, pink tablet.
 - Ritonavir is a white or off-white tablet.
- PAXLOVID is available in 3 Dose Packs (see **Figures A, B, and C** below). Your healthcare provider will prescribe the PAXLOVID Dose Pack that is right for you. Follow the instruction for the Dose Pack you receive.
- **If you have kidney disease, your healthcare provider may prescribe a lower dose (see Figures B and C). Talk to your healthcare provider to make sure you receive the correct Dose Pack.**

Figure A

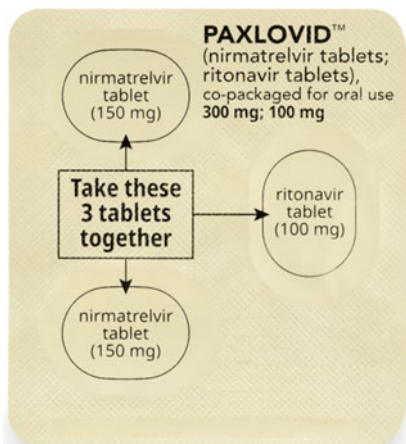
If you are prescribed PAXLOVID 300 mg; 100 mg Dose Pack
Each dose contains 3 tablets taken together twice daily



How to take PAXLOVID 300 mg; 100 mg Dose Pack



Morning Dose:
Take the 2 pink nirmatrelvir tablets and 1 white to off-white ritonavir tablet together.



Bedtime Dose:
Take the 2 pink nirmatrelvir tablets and 1 white to off-white ritonavir tablet together.



Figure B

If you are prescribed PAXLOVID 150 mg; 100 mg Dose Pack
Each dose contains 2 tablets taken together twice daily



How to take PAXLOVID 150 mg; 100 mg Dose Pack



Morning Dose:
Take the 1 pink nirmatrelvir tablet and
1 white ritonavir tablet together.



Bedtime Dose:
Take the 1 pink nirmatrelvir tablet and
1 white ritonavir tablet together.



Figure C

If you are prescribed PAXLOVID 300 mg; 100 mg (Day 1) and 150 mg; 100 mg (Days 2-5)
Each dose is taken together once daily; on days of dialysis take PAXLOVID after receiving dialysis



How to take PAXLOVID 300 mg; 100 mg (Day 1) and 150 mg; 100 mg (Days 2-5)

The diagram illustrates the layout of the Paxlovid blister card. At the top, it says 'Day 1 (300 mg; 100 mg) Your first day's dose. Take these 3 tablets together'. It shows three tablets: two pink nirmatrelvir tablets (150 mg) and one white ritonavir tablet (100 mg). Below this is the product name 'PAXLOVID' and 'NDC 0069-0521-11'. The main body of the card is divided into sections for 'Day 2 (150 mg; 100 mg)', 'Day 3 (150 mg; 100 mg)', 'Day 4 (150 mg; 100 mg)', and 'Day 5 (150 mg; 100 mg)'. Each section shows 'Take these 2 tablets together' and depicts one pink nirmatrelvir tablet (150 mg) and one white ritonavir tablet (100 mg). At the bottom left is a barcode with the number '(01)10300690521111' and 'PPO - GST Databar Limited'. At the bottom right, it says 'Dist. by Pfizer Labs, Div. of Pfizer Inc., NY, NY 10001 PAXSR-BL'.

Day 1 (First Day):
Take the 2 pink nirmatrelvir tablets and 1 white ritonavir tablet together (Blue part of the blister card).



Days 2-5:
Take the 1 pink nirmatrelvir tablet and 1 white ritonavir tablet together (Pink part of the blister card).



- Do not remove your PAXLOVID tablets from the blister card before you are ready to take your dose.
- If you are taking PAXLOVID tablets **twice daily** (Figure A or Figure B), take your first dose of PAXLOVID in the morning or at bedtime, depending on when you pick up your prescription, or as your healthcare provider tells you to. **Take your doses at around the same time each day.**
- If you have severe kidney disease and are taking PAXLOVID tablets **once daily** (Figure C), follow the daily dose instruction on the blister card. **Take your dose at around the same time each day.**
- Swallow the tablets whole. Do not chew, break, or crush the tablets.
- Take PAXLOVID with or without food.
- Do not stop taking PAXLOVID without talking to your healthcare provider, even if you feel better.
- If you miss a dose of PAXLOVID within 8 hours of the time it is usually taken, take it as soon as you remember. If you miss a dose by more than 8 hours, skip the missed dose and take the next dose at your regular time. Do not take 2 doses of PAXLOVID at the same time.
- If you take too much PAXLOVID, call your healthcare provider or go to the nearest hospital emergency room right away.
- If you are taking a ritonavir- or cobicistat-containing medicine to treat hepatitis C or HIV-1 infection, you should continue to take your medicine as prescribed by your healthcare provider.

Talk to your healthcare provider if you do not feel better or if you feel worse after 5 days.

What are the possible side effects of PAXLOVID?

PAXLOVID may cause serious side effects, including:

- **Allergic reactions, including severe allergic reactions (anaphylaxis) have** happened during treatment with PAXLOVID. Stop taking PAXLOVID and get medical help right away if you get any of the following symptoms of an allergic reaction:
 - skin rash, hives, blisters or peeling skin
 - painful sores or ulcers in the mouth, nose, throat or genital area
 - swelling of the mouth, lips, tongue or face
 - trouble swallowing or breathing
 - throat tightness
 - hoarseness
- **Liver problems.** Tell your healthcare provider right away if you get any of the following signs and symptoms of liver problems during treatment with PAXLOVID:
 - loss of appetite
 - yellowing of your skin and the white of eyes
 - dark-colored urine
 - pale colored stools
 - itchy skin
 - stomach-area (abdominal) pain

The most common side effects of PAXLOVID include: altered sense of taste (such as metallic, bitter taste) and diarrhea.

Other possible side effects include:

- headache
- vomiting
- abdominal pain
- nausea
- high blood pressure
- feeling generally unwell

These are not all of the possible side effects of PAXLOVID. For more information, ask your healthcare provider or pharmacist.

Call your doctor for medical advice about side effects. You may report side effects to FDA at 1-800-FDA-1088.

How should I store PAXLOVID?

- Store PAXLOVID at room temperature between 68°F to 77°F (20°C to 25°C).

Keep PAXLOVID and all medicines out of the reach of children.

General information about the safe and effective use of PAXLOVID.

Medicines are sometimes prescribed for purposes other than those listed in a Patient Information leaflet. Do not use PAXLOVID for a condition for which it was not prescribed. Do not give PAXLOVID to other people, even if they have the same symptoms that you have. It may harm them. You can ask your healthcare provider or pharmacist for more information about PAXLOVID that is written for health professionals.

What are the ingredients in PAXLOVID?

Active ingredient: nirmatrelvir and ritonavir

Nirmatrelvir inactive ingredients: colloidal silicon dioxide, croscarmellose sodium, lactose monohydrate, microcrystalline cellulose, and sodium stearyl fumarate. Film-coating contains: hydroxy propyl methylcellulose, iron oxide red, polyethylene glycol, and titanium dioxide.

Ritonavir inactive ingredients: anhydrous dibasic calcium phosphate, colloidal silicon dioxide, copovidone, sodium stearyl fumarate, and sorbitan monolaurate. The film coating may contain: colloidal anhydrous silica, colloidal silicon dioxide, hydroxypropyl cellulose, hypromellose, polyethylene glycol, polysorbate 80, talc, and titanium dioxide.



Distributed by

Pfizer Labs

Division of Pfizer Inc.

New York, NY 10001

LAB-1524-4.3

For more information, go to www.pfizer.com or call 1-800-438-1985.

This Patient Information has been approved by the U.S. Food and Drug Administration.

Revised: 02/2026